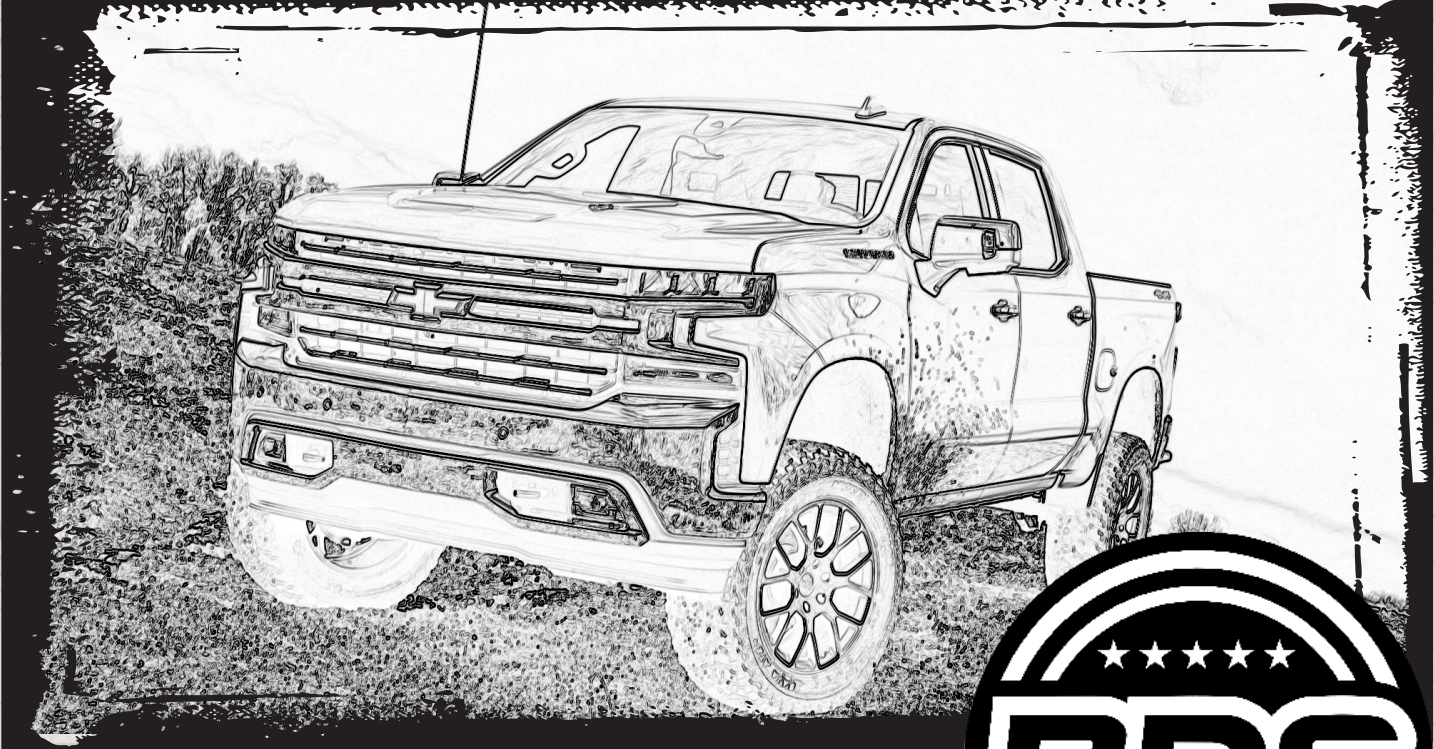


INSTALLATION GUIDE



Part#: 121012



HARDCORE LIMITED LIFETIME WARRANTY

Dual Shear UCA Mount

GM 1500 - 4WD | 2019-2024

Rev.050925

491 W. Garfield Ave., Coldwater, MI 49036 • Phone: 517-279-2135

Web: www.bds-suspension.com • E-mail: tech-bds@ridefox.com

Read And Understand All Instructions And Warnings Prior To Installation Of System And Operation Of Vehicle.



THANK YOU

Your truck is about to be fitted with the best suspension system on the market today. That means you will be driving the baddest looking truck in the neighborhood, and you'll have the warranty to ensure that it stays that way for years to come.

Thank you for choosing BDS Suspension!

BEFORE YOU START

BDS Suspension Co. recommends this system be installed by a professional technician. In addition to these instructions, professional knowledge of disassembly/ reassembly procedures and post installation checks must be known.

FOR YOUR SAFETY

Certain BDS Suspension products are intended to improve off-road performance. Modifying your vehicle for off-road use may result in the vehicle handling differently than a factory equipped vehicle. Extreme care must be used to prevent loss of control or vehicle rollover. Failure to drive your modified vehicle safely may result in serious injury or death. BDS Suspension Co. does not recommend the combined use of suspension lifts, body lifts, or other lifting devices. You should never operate your modified vehicle under the influence of alcohol or drugs. Always drive your modified vehicle at reduced speeds to ensure your ability to control your vehicle under all driving conditions. Always wear your seat belt.

BEFORE INSTALLATION

- Special literature required: OE Service Manual for model/year of vehicle. Refer to manual for proper disassembly/reassembly procedures of OE and related components.
- Adhere to recommendations when replacement fasteners, retainers and keepers are called out in the OE manual.
- Larger rim and tire combinations may increase leverage on suspension, steering, and related components. When selecting combinations larger than OE, consider the additional stress you could be inducing on the OE and related components.
- Post suspension system vehicles may experience drive line vibrations. Angles may require tuning, slider on shaft may require replacement, shafts may need to be lengthened or trued, and U-joints may need to be replaced.
- Secure and properly block vehicle prior to installation of BDS Suspension components. Always wear safety glasses when using power tools.
- If installation is to be performed without a hoist, BDS Suspension Co. recommends rear alterations first.
- Due to payload options and initial ride height variances, the amount of lift is a base figure. Final ride height dimensions may vary in accordance to original vehicle attitude. Always measure the attitude prior to beginning installation.



Visit 560plus.com for more information.

TIRES AND WHEELS

N/A



BEFORE YOU DRIVE

Check all fasteners for proper torque. Check to ensure for adequate clearance between all rotating, mobile, fixed, and heated members. Verify clearance between exhaust and brake lines, fuel lines, fuel tank, floor boards and wiring harness. Check steering gear for clearance. Test and inspect brake system.

Perform steering sweep to ensure front brake hoses have adequate slack and do not contact any rotating, mobile or heated members. Inspect rear brake hoses at full extension for adequate slack. Failure to perform hose check/ replacement may result in component failure. Longer replacement hoses, if needed can be purchased from a local parts supplier.

Perform head light check and adjustment.

Re-torque all fasteners after 500 miles. Always inspect fasteners and components during routine servicing.

CONTENTS OF YOUR KIT

BDS121012 Box Kit		
Part #	Qty	Description
BP1089	1	Bag Kit
	4	14mm-2.00 x 90mm Bolt
	4	14mm-2.00 Prevailing Torque Nut
	8	14mm Washer, Clear Zinc
05634	1	Shock Tower Brace Mount BRKT - DRV
05635	1	Shock Tower Brace Mount BRKT - PASS

TROUBLESHOOTING INFORMATION FOR YOUR VEHICLE

1. Before installation make sure there is a minimum of 1/4" exposed thread beyond the nut on the strut.
2. Upper Control Arm bushings widths must be same as OE UCA bushing width.
2. Follow the ride height setting instructions provided with the UCAs.



**TECH
TIPS**

SPECIAL TOOLS

Die Grinder with Burr bit

INSTALLATION INSTRUCTIONS

1. These steps are intended to be performed during strut/coilover installation.
2. Remove the axle nut. Fig. 1

FIGURE 1



3. Disconnect sway bar link. Fig. 2

FIGURE 2



4. Disconnect the tie rod. Fig. 3

FIGURE 3



5. Loosen the UCA to Knuckle nut. Do not remove. Thread nut to near end of ball joint threads. Fig. 4

FIGURE 4



6. Strike knuckle near taper to dislodge the ball joint from the knuckle. Disconnect knuckle from UCA.
7. Loosen the and remove the UCA nuts. One at a time pull the bolts and replace with the **bolts and nuts provided in BP1089** Do not fully insert the bolt past the outer bushing face. Fig. 5A, 5B, 5C, 5D

FIGURE 5A



FIGURE 5B



FIGURE 5C

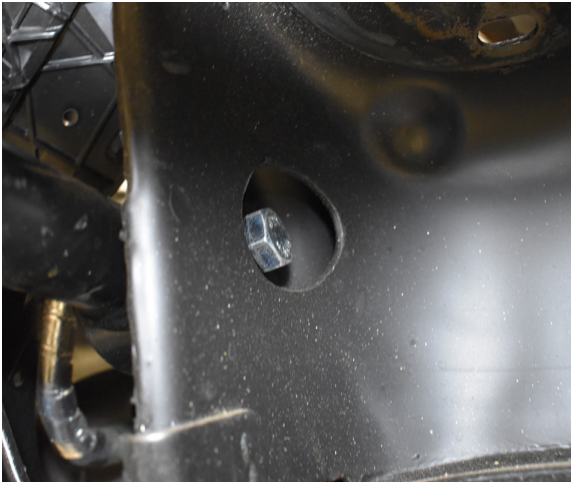


FIGURE 5D



8. Fit the double shear bracket over the strut tower (note they are side specific). Fully install the upper control arm bushing bolt through the dual shear upper mount at this time. Attach using the provided washers and 14mm nuts in BP1089. Do this for the front and rear control arm mounts. Snug up hardware. Fig. 6A, 6B, 6C

FIGURE 6A



FIGURE 6B

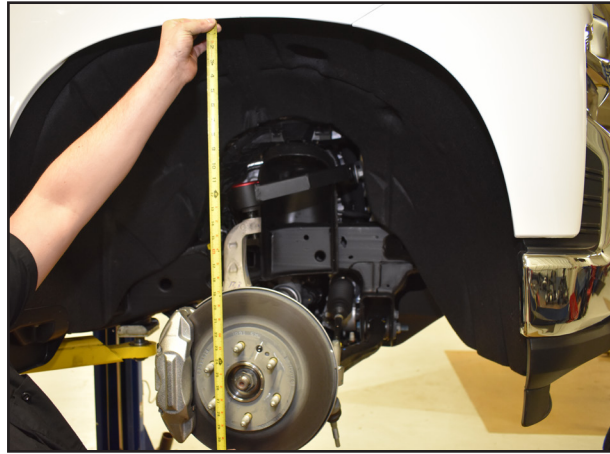


FIGURE 6C



9. Attach the ball joint on the new upper control arm to the knuckle. Snug up ball joint to the knuckle, but do not torque down. The upper ball joint will be removed from the knuckle later so that the strut can be installed.
10. Set the ride height from the fender lip to the center of the hub at 24-1/2" (2" Kits), 25-3/4" (3.5" Kits), or 28-1/4" (6" or 4" Trail BOSS/ AT4 Kits). Using a torque wrench, tighten the control arm bushing hardware with the dual shear upper mount to **126ft-lbs**. This will ensure the rubber bushings are tightened to the right position and not put preload in the rubber bushings.

FIGURE 7



11. Remove the upper ball joint from the knuckle, save ball joint hardware. Make sure the knuckle is supported so it does not pull out the CV.
12. Reinstall the strut into the vehicle by aligning the three holes in the strut tower and connect using the strut nuts removed earlier. Leave the hardware loose. If installing with Fox Coilovers, install the coilovers at this time. Follow instructions included with the coilovers or reference the coilover install instructions on Fox's website. Fig. 8


 **Tip** Do not tighten the upper strut nuts at this time, it will make it easier to install the lower strut spacer. Align strut studs to

FIGURE 8



13. NOTE: If after tightening the UCA bolts the holes are not aligned on the bracket, grind the hole as needed in the strut tower to help align the holes in the bracket. Fig. 9

FIGURE 9



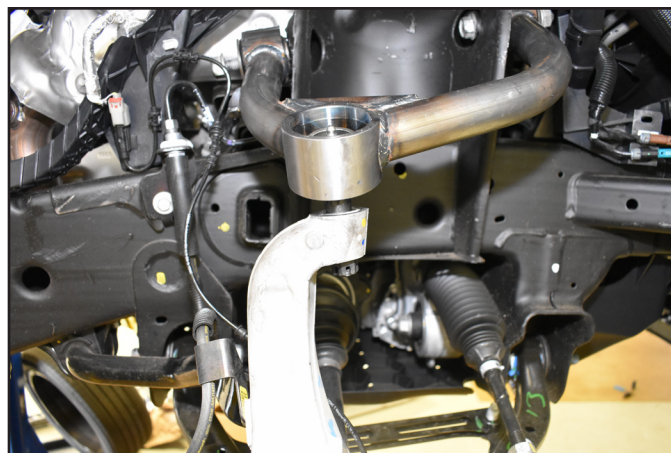
14. Reinstall the lower strut mount. Fig. 10 Torque the lower mount hardware to 37 ft-lbs.

FIGURE 10



15. With the lower hardware tight, torque the upper strut mount nuts to 40 ft-lbs.
16. Reattach the upper ball joint to the knuckle with the hardware removed earlier. Fig. 11 Use the jack to support the lower control arm and torque the upper ball joint nut to 26 ft-lbs with the first pass and 60-75 degrees on the final pass.

FIGURE 11



17. Reattach the tie rod to the knuckle and torque to 44 ft-lbs.
18. Repeat installation on the opposite side of the vehicle. When both sides are complete, reattach the sway bar links and tighten hardware to 60 ft-lbs.
19. Reattach the brake wire / ABS wires to the factory position on the knuckle. Use the provided wire clamps and 1/4" bolt to attach the brake wire / ABS wire to the upper control arm. Check for enough slack in the wires and adjust as necessary.
20. Reinstall the front wheels and lower the vehicle to the ground.
21. Torque lug nuts to 140 ft-lbs in a crossing pattern.



WE WANT TO SEE YOUR RIDE!

Grab photos of your BDS-equipped truck in action and send them in for a chance to be featured. Send it in to our Bad Ass Rides customer gallery at bds-suspension.com/bar and post them on the BDS Fan Page on Facebook at facebook.com/BDSSuspensions. Don't forget about your BDS swag! BDS offers t-shirts, hoodies, decals and more available on the BDS website or through your local BDS distributor.

TIME TO HAVE SOME FUN

Thank you for choosing BDS Suspension.

For questions, technical support and warranty issues relating to this BDS Suspension product, please contact your distributor/installer before contacting BDS Suspension directly.