

INSTALLATION GUIDE



Part#: 021672



HARDCORE LIMITED LIFETIME WARRANTY

5.5" Suspension System

Chevy Colorado / GMC Canyon 4WD | 2015-21

Rev. 090325

491 W. Garfield Ave., Coldwater, MI 49036 • Phone: 517-279-2135

E-mail: tech-bds@ridefox.com

Read And Understand All Instructions And Warnings Prior To Installation Of System And Operation Of Vehicle.



THANK YOU

Your truck is about to be fitted with the best suspension system on the market today. That means you will be driving the baddest looking truck in the neighborhood, and you'll have the warranty to ensure that it stays that way for years to come.

Thank you for choosing BDS Suspension!

BEFORE YOU START

BDS Suspension Co. recommends this system be installed by a professional technician. In addition to these instructions, professional knowledge of disassembly/ reassembly procedures and post installation checks must be known.

FOR YOUR SAFETY

Certain BDS Suspension products are intended to improve off-road performance. Modifying your vehicle for off-road use may result in the vehicle handling differently than a factory equipped vehicle. Extreme care must be used to prevent loss of control or vehicle rollover. Failure to drive your modified vehicle safely may result in serious injury or death. BDS Suspension Co. does not recommend the combined use of suspension lifts, body lifts, or other lifting devices. You should never operate your modified vehicle under the influence of alcohol or drugs. Always drive your modified vehicle at reduced speeds to ensure your ability to control your vehicle under all driving conditions. Always wear your seat belt.

BEFORE INSTALLATION

- Special literature required: OE Service Manual for model/year of vehicle. Refer to manual for proper disassembly/reassembly procedures of OE and related components.
- Adhere to recommendations when replacement fasteners, retainers and keepers are called out in the OE manual.
- Larger rim and tire combinations may increase leverage on suspension, steering, and related components. When selecting combinations larger than OE, consider the additional stress you could be inducing on the OE and related components.
- Post suspension system vehicles may experience drive line vibrations. Angles may require tuning, slider on shaft may require replacement, shafts may need to be lengthened or trued, and U-joints may need to be replaced.
- Secure and properly block vehicle prior to installation of BDS Suspension components. Always wear safety glasses when using power tools.
- If installation is to be performed without a hoist, BDS Suspension Co. recommends rear alterations first.
- Due to payload options and initial ride height variances, the amount of lift is a base figure. Final ride height dimensions may vary in accordance to original vehicle attitude. Always measure the attitude prior to beginning installation.



Visit 560plus.com for more information.

TIRES AND WHEELS

305/55 on 20x9 w/ 5-1/4" BS
Max 5-1/4" Backspace Wheel on 20" Rim
Max 4-1/2" Backspace Wheel on 17 or 18" Rim



BEFORE YOU DRIVE

Check all fasteners for proper torque. Check to ensure for adequate clearance between all rotating, mobile, fixed, and heated members. Verify clearance between exhaust and brake lines, fuel lines, fuel tank, floor boards and wiring harness. Check steering gear for clearance. Test and inspect brake system.

Perform steering sweep to ensure front brake hoses have adequate slack and do not contact any rotating, mobile or heated members. Inspect rear brake hoses at full extension for adequate slack. Failure to perform hose check/ replacement may result in component failure. Longer replacement hoses, if needed can be purchased from a local parts supplier.

Perform head light check and adjustment.

Re-torque all fasteners after 500 miles. Always inspect fasteners and components during routine servicing.

CONTENTS OF YOUR KIT

021670 / 021671DRV Knuckle Box Kit

Part #	Qty	Description
02800	1	Steering Knuckle - DRV (021670) or
02801	1	Steering Knuckle - Pass (021671)
401-1830	1	Tie Rod End (021670-021671)
W96S	1	9/16" SAE washer (021670-021671)

Box Kit 021672

Part #	Qty	Description
02807	1	Colorado - Front x-member - BDS
02808	1	Colorado - Rear x-member - BDS
02816	1	BDS Backing Plate - Aluminum
02809	1	Colorado - DRV Diff Drop - BDS
02810		Colorado - Pass Diff Drop - BDS
B1128		Bag Kit - Bolt Packs
680	1	Bolt Pack (Colorado Cross Member)
	4	5/8"-11 x 4-1/2 bolt - grade 8
	8	5/8" SAE Thru-Hardened Washer
	4	5/8"-11 Prevailing Torque Nut
681	1	Bolt Pack (Diff Drop Hardware)
	3	9/16"-12 x 3-1/2" Bolt - Grade 8
	6	9/16" SAE Thru-Hardened Washer
	3	9/16"-12 Prevailing Torque Nut
	2	14mm-2.00 x 35mm Bolt
	2	9/16" SAE Washer - clear zinc

021674 Strut Spacer Box Kit

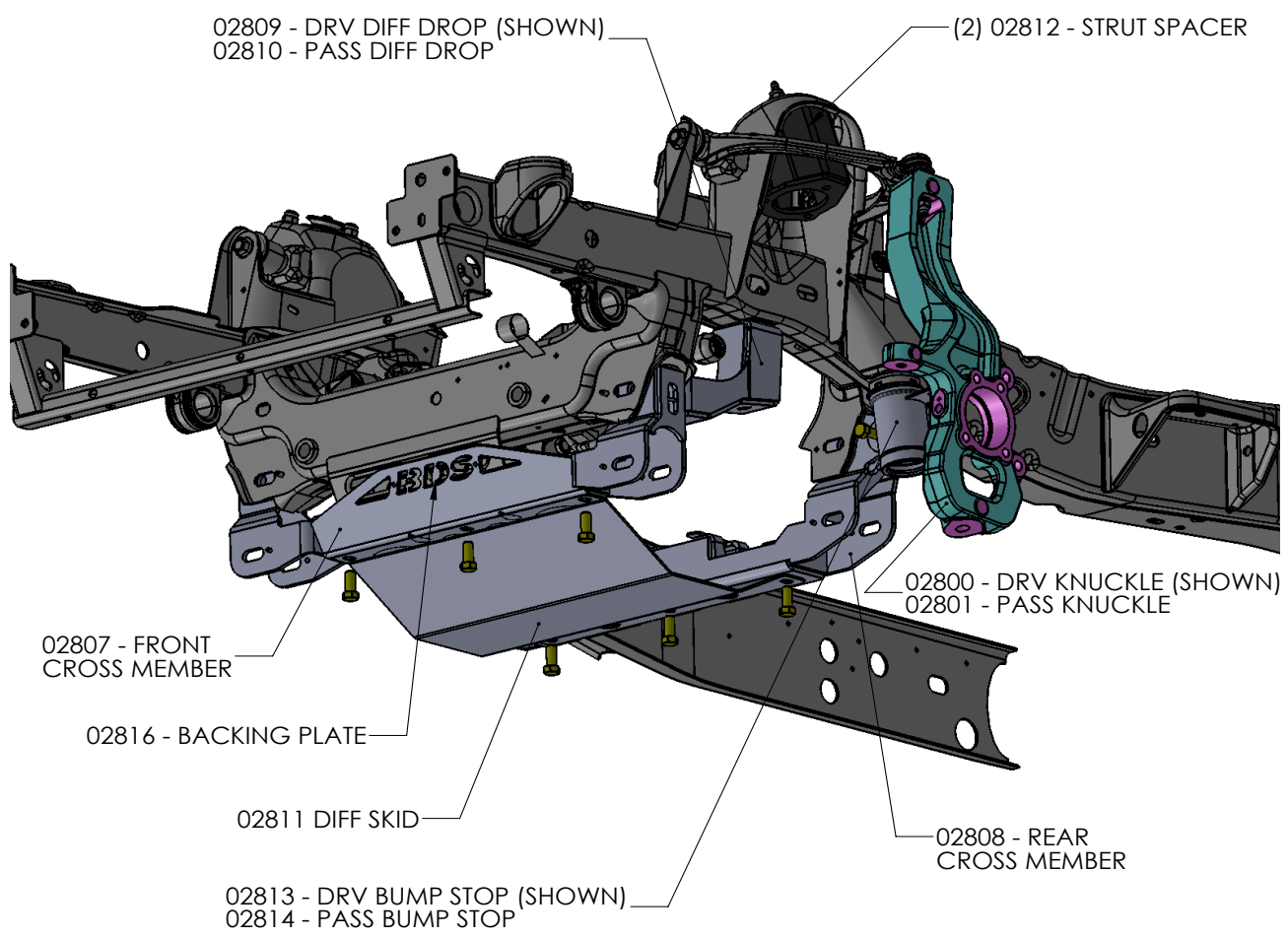
Part #	Qty	Description
02812	2	Colorado - 5.5" Strut Spacer - BDS
943	1	Bolt Pack - Strut Spacers
	6	3/8"-16 Nylock Nut
	6	3/8" SAE Washer

011406 4" Rear Box Kit

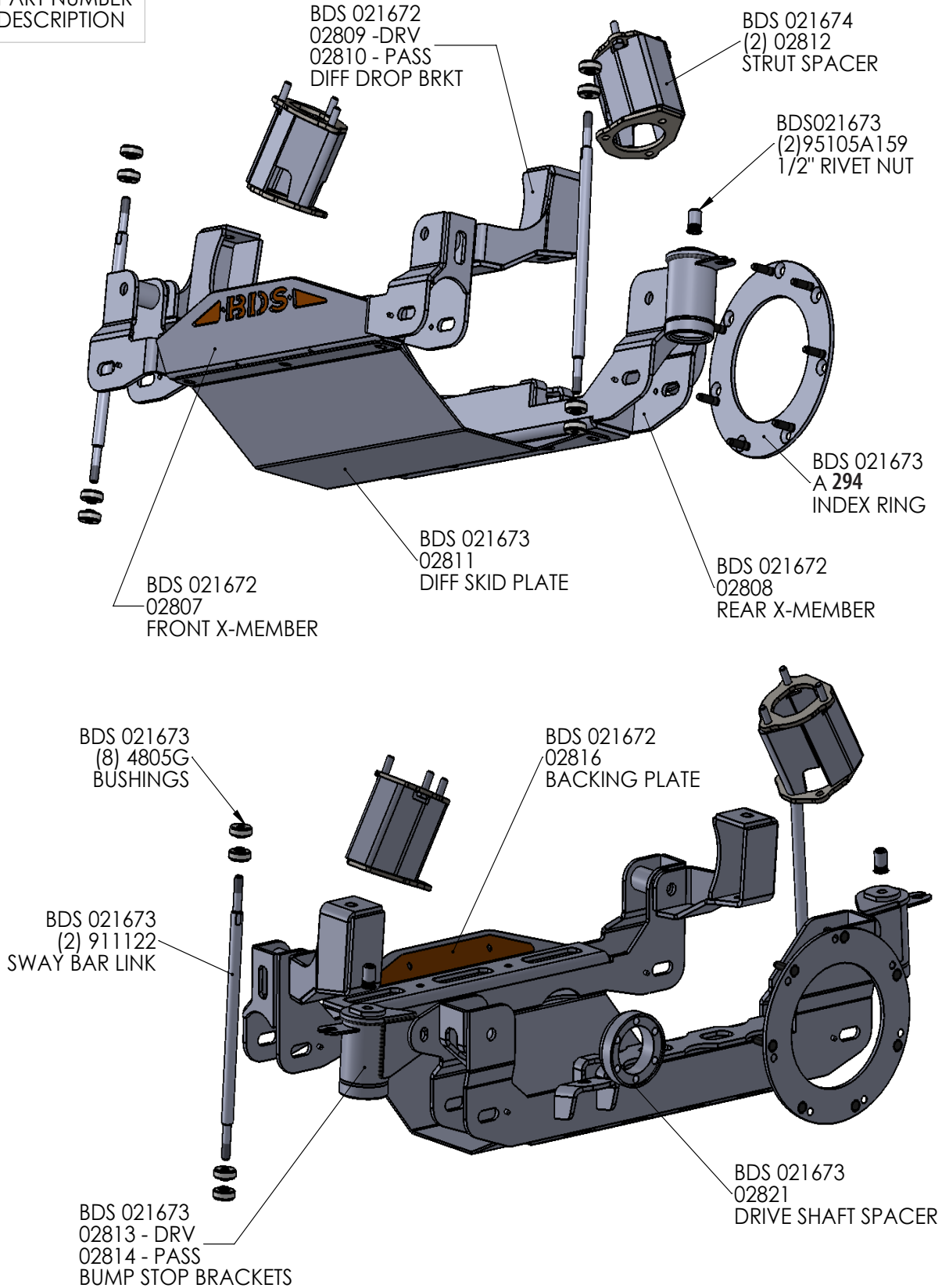
Part #	Qty	Description
02815	2	4" Rear Block
962961138QB	4	9/16" x 2-9/16" x 11-3/8" U-Bolt - Black
B1131	1	Bag Kit
099000	5	Zip Ties
W96S-B	8	9/16" SAE Washer - black
N96FH-B	8	9/16" High Nut - black

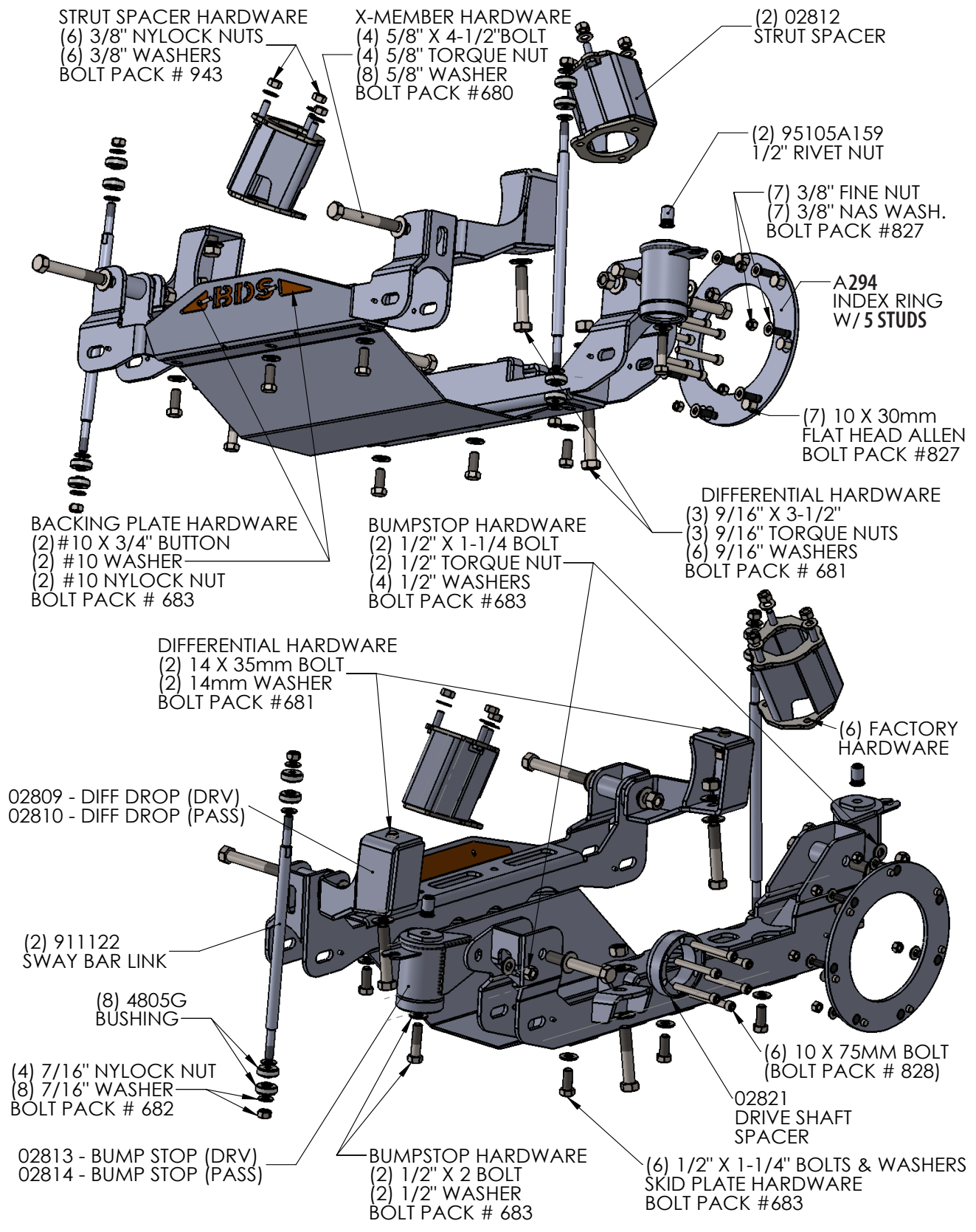
Box Kit 021673

Part #	Qty	Description
02811	1	Colorado - Diff Skid Plate - BDS
911122	2	Sway Bar Link - Colorado
02813	1	Colorado Bump Stop - BDS - drv
02814	1	Colorado Bump Stop - BDS - pass
B1129	1	Bag Kit Sway Bar / Bump Stops
4805G8	8	Sway Bar Link Bushing
682	1	Bolt Pack (Sway Bar Links)
	8	7/16" USS Flat Washer - Grade 9 - yellow zinc
	4	7/16"-14 Nylock Nut - yellow zinc
683	1	Bolt Pack (Skid Plate / Bump Stop / Misc.)
	8	1/2"-13 x 1-1/4" Bolt - Grade 8
	2	1/2"-13 x 2" Bolt - Grade 8
	12	1/2" SAE Thru-Hardened Washer
	2	1/2"-13 Prevailing Torque Nut
	2	7/16" 0.281 Hole Vinyl Cushion Wire Clip
	4	3/16" Cable Clamp
	4	1/4"-20 x 3/4" Self Threading Bolt
	2	10-24 x 3/4" Button Head Bolt - Stainless
	2	#10 SAE Washer
	2	10-24 Nylock Nut
95105A159	3	1/2" Rivet Nut
799	1	Bolt Pack (Rivet Nut Installation)
	1	1/2"-13 x 2" Bolt - Grade 8
	1	1/2" SAE Washer
	1	1/2" Star Washer
	1	9/16"-18 High Hex Nut
099000	4	Zip Tie
A294	1	Index Ring Assembly w/ (5) Studs
827	1	Bolt Pack - Index Ring Kit
	7	10mm-1.50 x 30mm FHSCS - Class 10.9
	7	3/8"-24 Hex Nut - Gr 8
	7	3/8" - NAS Washer
ARP15AJ1	2	3/8"-24 Press-in Stud
02821	1	Colorado Front Drive Shaft Spacer
W96USS	3	9/16" USS Washers
828	1	Bolt Pack - Drive Shaft Spacer
	6	10mm-1.50 x 75mm Allen Bolt - Class 12.9
342701	1	Thread Locker



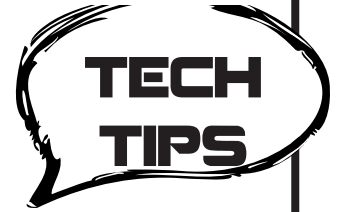
BOX KIT
PART NUMBER
DESCRIPTION





TROUBLESHOOTING INFORMATION FOR YOUR VEHICLE

1. If using a plasma cutter for frame bracket modification, disconnecting the battery is highly recommended.
2. Stock 17" & 18" wheels can not be reinstalled with the lift kit. Aftermarket 20" wheels with maximum of 5.25" Backspacing are recommended - certain wheel and tire combinations will require weld on steering stops, these are included in the kit. See end of inst. sheet for details on installation.
3. 6 cylinder models require slight exhaust modification. 4 cylinder / Diesel models could possibly require exhaust modification
4. Rack and Pinion steering is sensitive to tire choice. Tires with large lugs, little backspacing, or extreme amounts of weight may induce a steering wheel bobble.
5. Index ring is dual drilled to work for 2015-2016 / 2017+ model years. There are (5) studs that are similar between all year model trucks. Match up the remaining two studs to transfer case and install studs by pressing into the bracket
6. **DO NOT USE FILL PORT FOR FLUID LEVEL ON AN INDEXED TRANSFER CASE. THE FILL PORT WILL BE LOWER THAN OE FILL LEVEL HEIGHT:** If any maintenance requiring fluid change or refill has or is being done, before reinstalling transfer case check fluid levels on bench and fill transfer case with manufacturer recommended volume of fluid.



INSTALLATION INSTRUCTIONS

INSTALLATION INSTRUCTIONS

1. Park vehicle on clean, flat, and level surface. Block the rear wheels for safety, chock both the front and backside of the tires. Put the transmission in Neutral (required for index ring installation)
2. Disconnect the battery.
3. Raise the front of the vehicle and support the frame rails with jackstands.
4. If a plasma cutter is to be used for frame bracket modification (later in installation), it is recommended to disconnect the battery at this time.
5. Remove the front wheels

SPECIAL TOOLS

36mm Socket, Air Hammer / Chisel highly recommended
Plasma Cutter or other cutting device (sawzall or cutoff wheel)

DISASSEMBLY INSTRUCTIONS

6. Remove any differential skid plates (if equipped) and the front splash shield from the vehicle. None of the factory skid plates will be reinstalled.
7. Remove the brake bracket from the side of the upper strut mount, discard flanged bolt. (Fig. 1). Remove the bracket from the vehicle by cutting a slot in the bracket for clearance to the brake line. Discard bracket, it will not be reused.
8. Remove the clip from the brake line to allow the brake line to detach from the bolt on brake line bracket.

FIG 1



9. Disconnect the brake caliper from the steering knuckle, retain mounting bolts. Hang the caliper out of the way; do NOT allow the caliper to hang from the brake line. (Fig. 2)

FIG 2



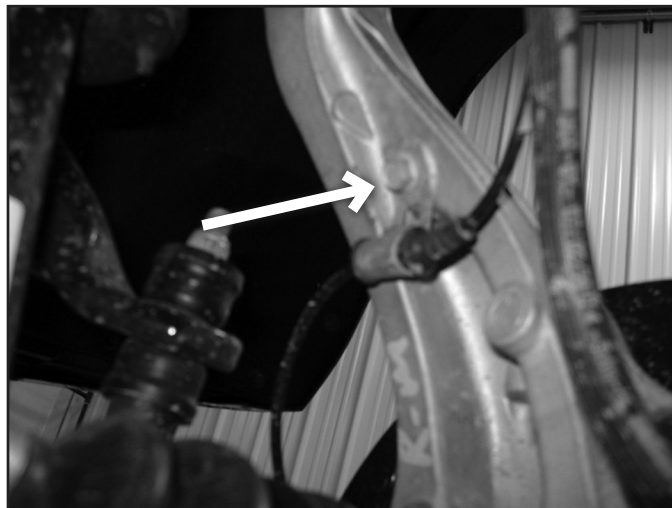
10. Remove the torx head bolt (T30) that attaches the rotor to the hub. Keep bolt for reinstallation. (Fig. 3)

FIG 3



11. Disconnect the ABS wire from the backside of the steering knuckle, remove the clip and retain the bolt. (Fig. 4)

FIG 4



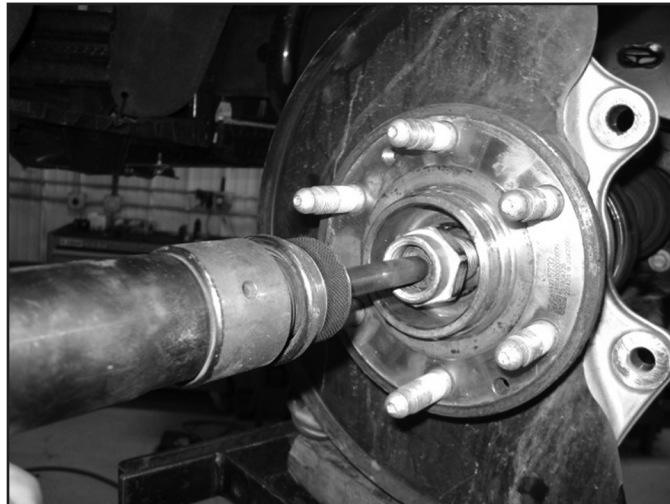
12. Remove the ABS sensor from the side of the knuckle (T30), retain mounting bolt. (Fig. 5)

FIG 5



13. Remove the CV nut. CV's have a tight fit to the hubs, it may be necessary to use an air hammer to separate them. Reinstall the nut a few turns to keep from damaging the CV shaft if this method is used. (Fig. 6)

FIG 6



14. Remove the factory sway bar links, they will not be reused.
15. Break the jam nuts loose on the tie rod ends at this time. The factory tie rod ends will be replaced later in the installation.
16. Remove the ball joint nuts and tie rod end nuts. Use an appropriate tool to unseat the tapers from the factory knuckle. It is NOT recommended to use a hammer to separate the joints if the knuckles are ever planned to be reused. (Fig. 7, 8)

FIG 7

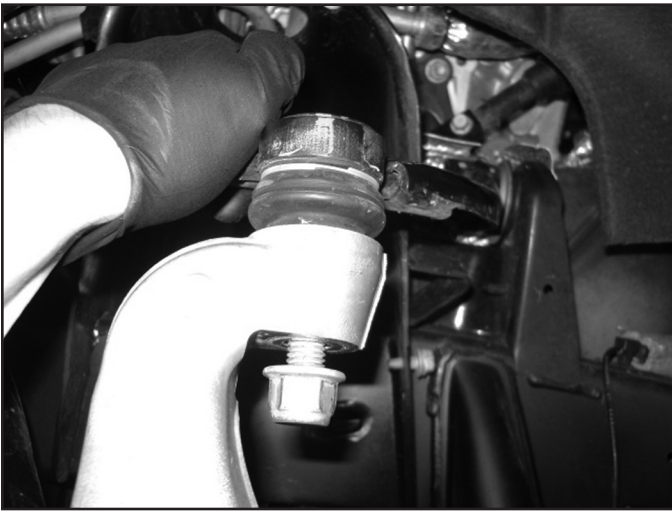


FIG 8



17. Remove the knuckle and hub assembly from the vehicle.

18. Remove lower strut bolt. Remove the lower control arms. Retain the cam bolts / washers. (Fig. 9, 10)

FIG 9



FIG 10



19. Remove the factory struts and the 3 nuts that attach the strut to the upper strut mount. Do NOT remove the center nut that holds the strut assembly together.

DIFFERENTIAL REMOVAL

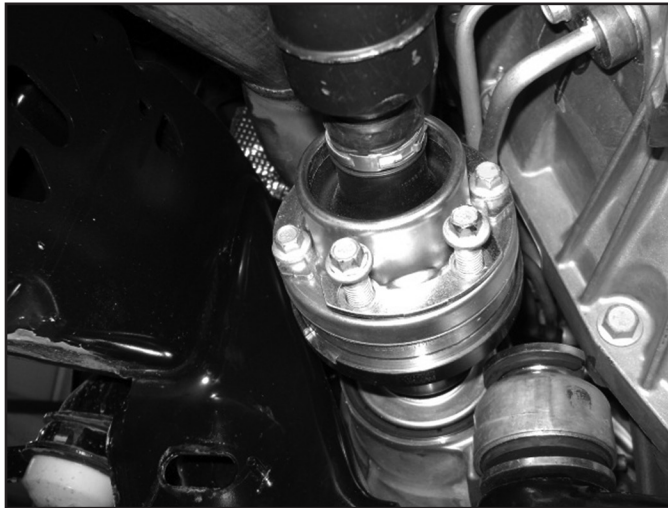
20. Disconnect the central axle disconnect wiring harness (Fig. 11)

Fig 11



21. Disconnect front drive shaft from the axle. Discard front mounting hardware, it will not be reused (Fig. 12).
22. For models with a driveshaft flange at the transfer case, disconnect rear flange bolts, **SAVE** hardware, it will be reused. Remove front driveshaft from the vehicle. For models with upper driveshaft end yoke, carefully remove OE dust boot clamp from transfer case, slide end yoke forwards and away from the transfer case. Remove front driveshaft from the vehicle.

FIG 12

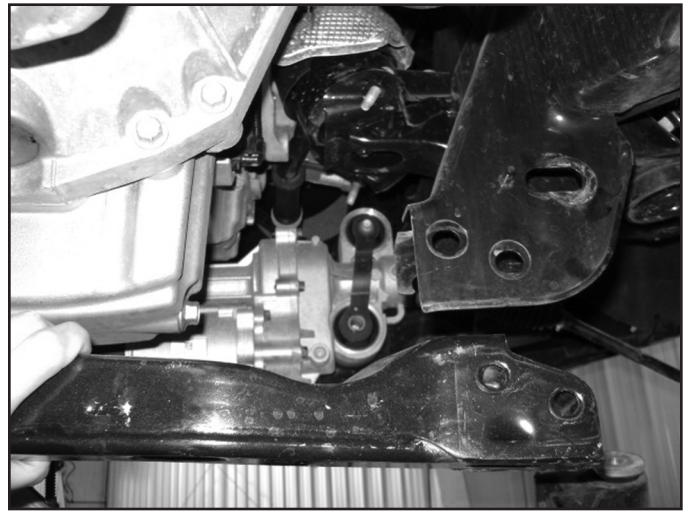


23. Remove the rear differential mounting bolt (Fig 13). Remove the rear factory cross member (Fig. 14), Discard hardware, it will not be reused.

FIG 13



FIG 14



24. Support the differential with a hydraulic jack (transmission jack preferred). Remove the remaining two front mounting bolts (Fig. 15) and lower the differential from the vehicle. As the differential is lowered, disconnect the differential breather hose from the differential (Fig. 16).

FIG 15

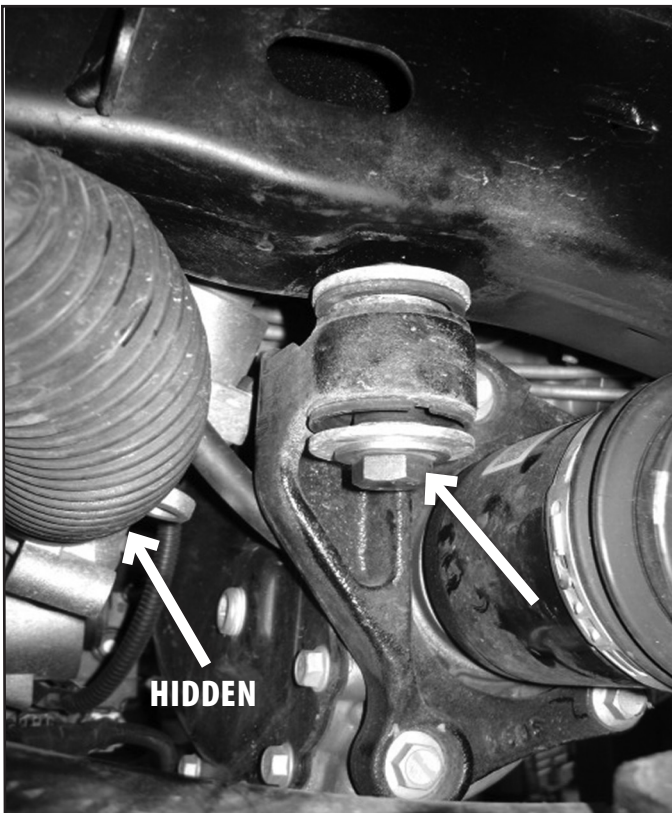
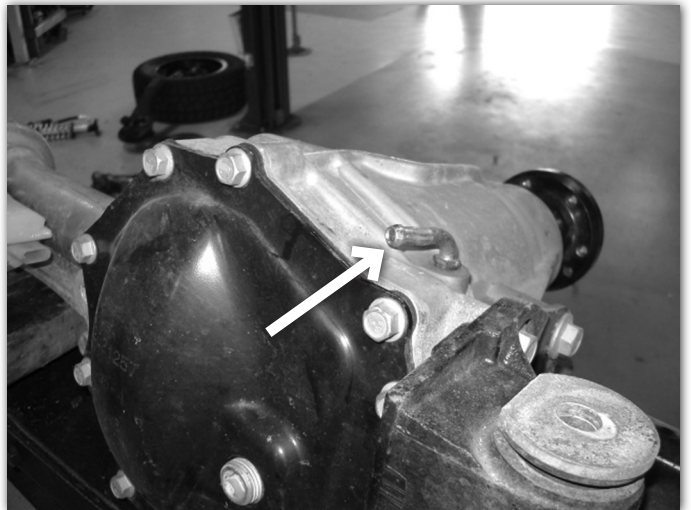


FIG 16



FRAME MODIFICATION

25. The front factory lower control arm pocket will need to be modified to allow the new crossmember to be installed.

FRONT POCKET MODIFICATION

26. Measure down 1-1/8" from the BOTTOM of the factory slot on both the front and back sides and make a horizontal mark (Fig 17a). Connect these two lines by measuring 'in' towards the center of the vehicle 1-1/8" and making a line that goes from front to back (Fig 17b). Remove this section of material from the vehicle. Use a grinder to make the faces flush and remove any sharp edges so that the cross member can be installed easily (Fig. 17c& Fig. 17d). Coat with paint.



Tip Due to the factory forming of the front pocket, it can be difficult to install the front crossmember. Use a hammer or adjustable wrench to unflair the factory pocket if necessary.

FIG 17A

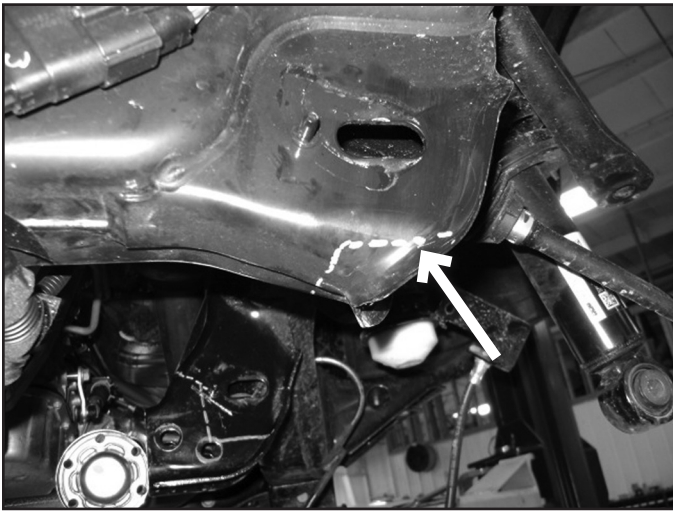


FIG17B

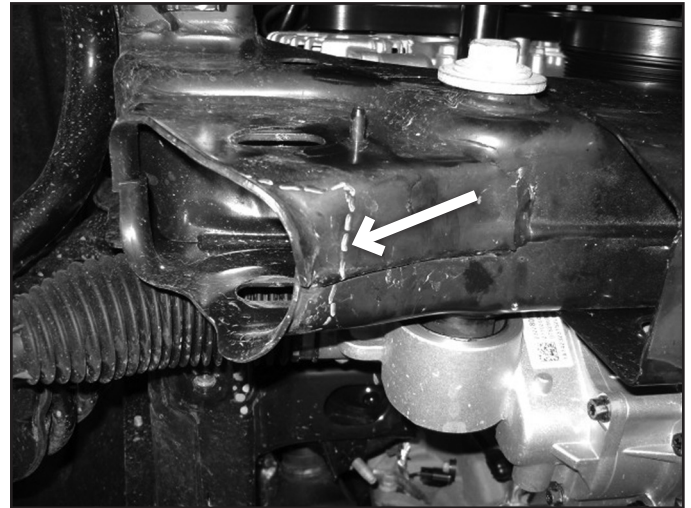
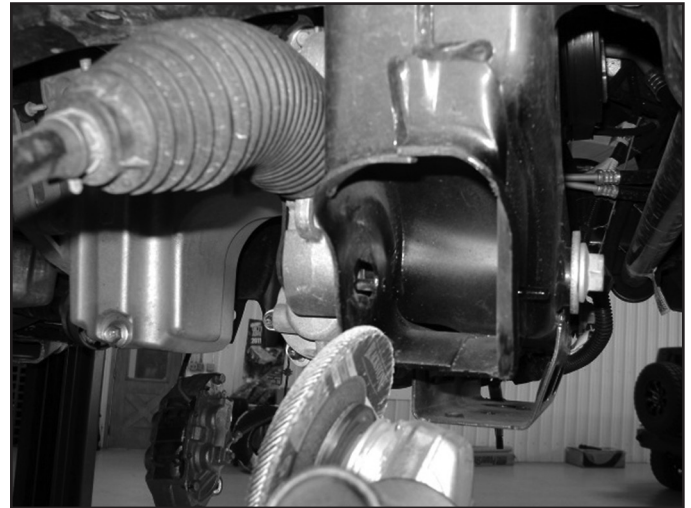


FIG 17C



FIG 17D



PASSENGER'S REAR POCKET MODIFICATION

27. Draw a line that connects the top of the outside slot and bottom of the inside slot and remove the material from vehicle. Use a grinder to remove sharp edges, coat with paint when completed. (Fig. 18a, 18b)

FIG 18A



FIG 18B



DRIVER'S REAR POCKET MODIFICATION

28. Draw a horizontal line from the top of the outside slot.
29. Draw a vertical line from the center of the outside slot
30. Draw a line that would go through the center of the stock alignment pin that is perpendicular (about 45 degrees from horizontal) to the inside face.
31. Remove this section of material from the vehicle, remove any sharp edge with a grinder, and coat with paint. (Fig. 19a, 19b, 19c, & 19d)

FIG 19A



FIG 19B



FIG 19C

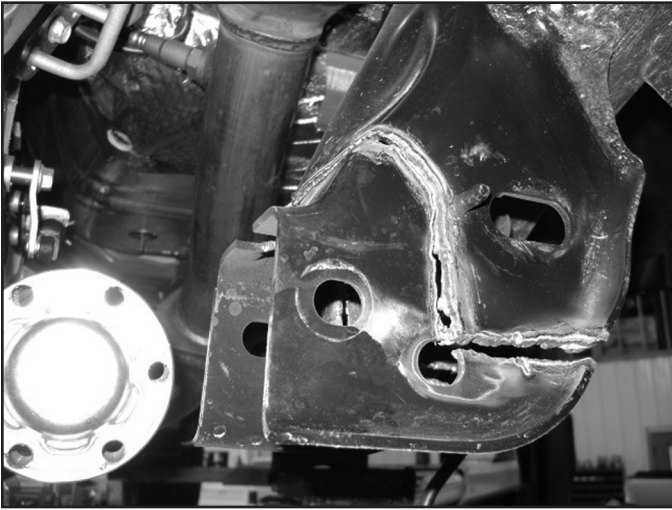
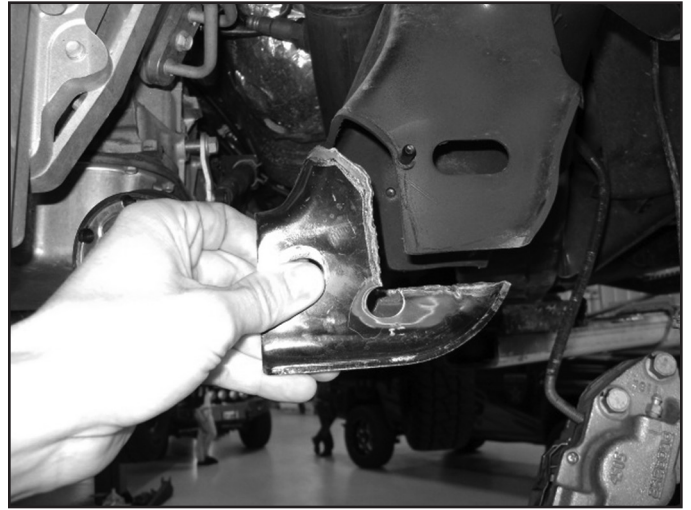


FIG 19D



CROSSMEMBER / DIFFERENTIAL INSTALLATION

32. Install the new front crossmember with new 5/8" x 4-1/2" hardware (BP #680). Run the bolts from front to rear, Do NOT put the nuts on the bolts at this time. Crossmember are a tight fit if not enough material was removed during the frame pocket modification. (Fig. 20a)

Note: The factory skid plate mount on the front cross member may need to be cut off as well. If the factory skid plate mount interferes with new provided cross member cut the mount at the slots and remove from the vehicle. (Fig. 20b & Fig. 20c)

FIG 20A

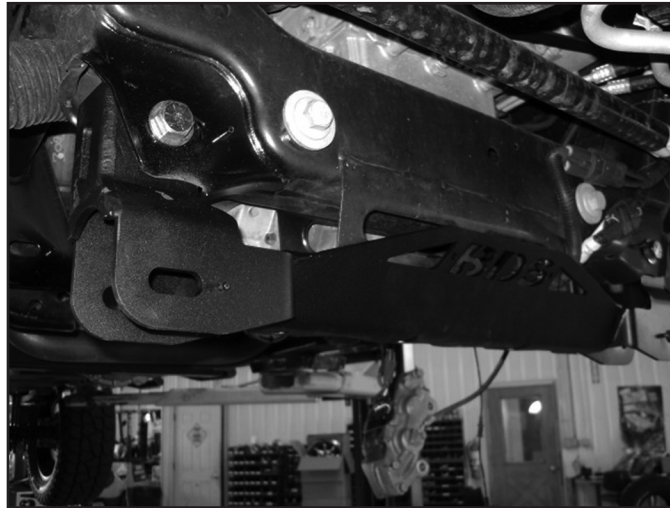


FIG 20B

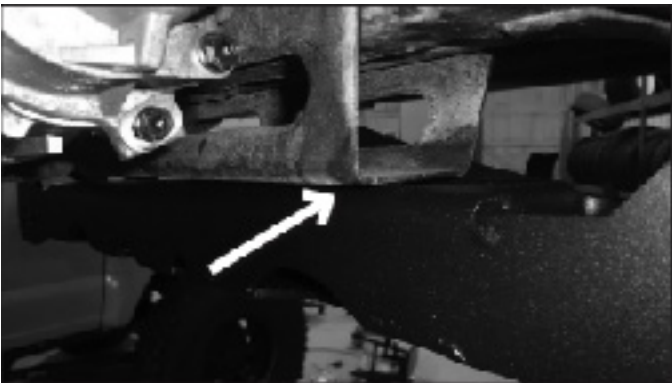
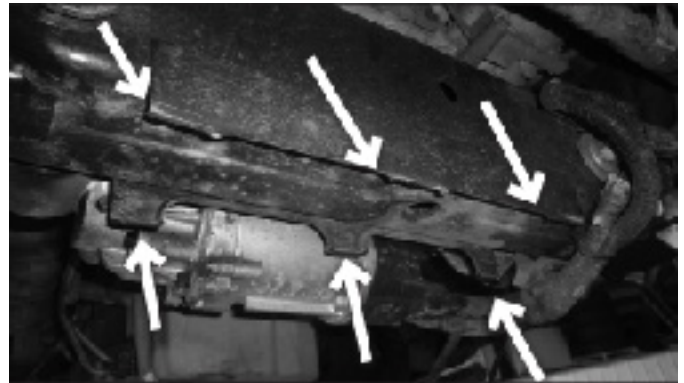
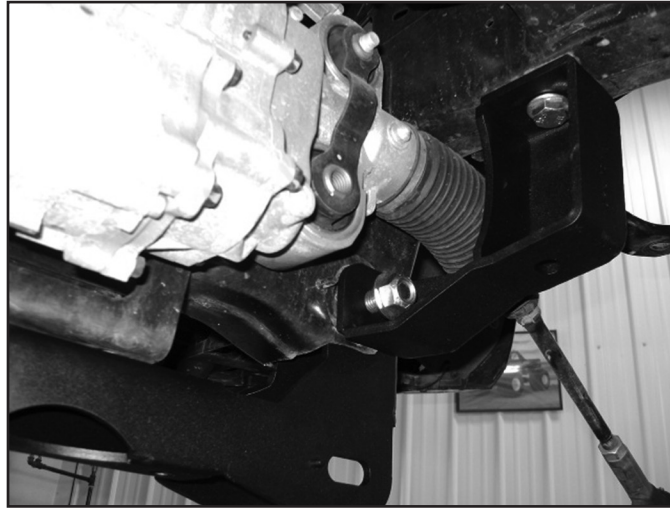


FIG 20C



33. Install the new differential drop brackets (02809 – DRV, 02810 – PASS) with new 14mm x 30mm bolts and washers (BP #681) to the frame. Brackets will attach to the front cross member hardware, attach with 5/8" nuts and washers. Push the differential brackets all the way towards the front of the vehicle and tighten 14mm hardware to 95 ft-lbs. Leave 5/8" hardware loose. (Fig. 21)

FIG 21



34. Install differential to the new drop brackets with 9/16" x 3-1/2" hardware (BP #681). (Fig. 22a, 22b)

FIG 22A

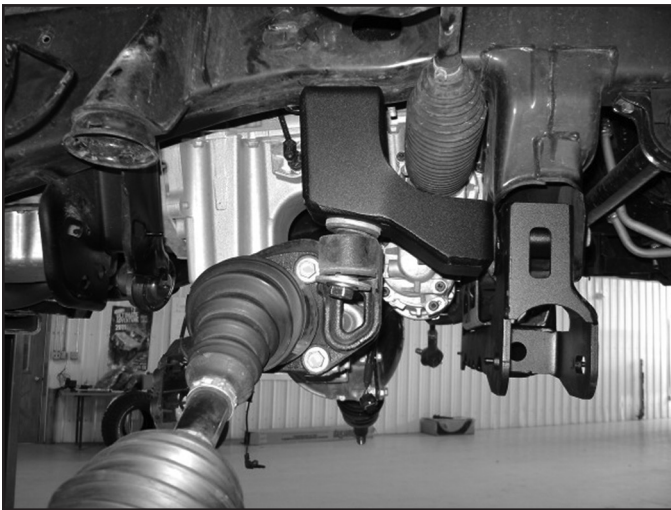
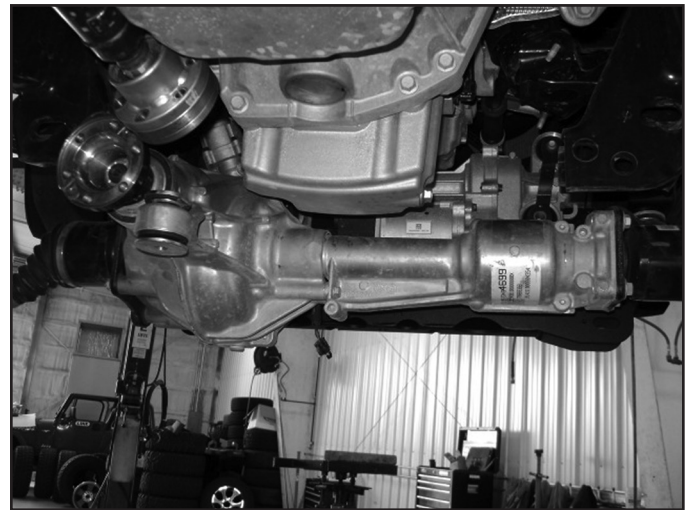


FIG 22B



35. Raise the rear differential mount. Install rear cross member with new 5/8" x 4-1/2" hardware (BP #680). Attach differential to rear crossmember with new 9/16" x 3-1/2" hardware (BP#681). (Fig. 23)

Note: After test driving, if a vibration is present in the front driveshaft, use the provided 9/16" USS washers (B1130) to space up the rear mount between the differential mount and the rear cross member. This is typically not required on gas models, but has been necessary in some cases. On diesel models, it is recommended to use two 9/16" spacer washers. Driving the vehicle and adding or removing spacer washers is the best way to reduce driveline vibration. If spacing is required, verify differential clearance to the trimmed area of the rear OE control arm pocket.

FIG 23



36. Reconnect the differential breather line and the central axle disconnect wiring harness.

BUMP STOP INSTALLATION

37. Remove the factory bump stops, use a hammer and a punch to get the bump stops to pop out of the factory cup. (Fig. 24)

FIG 24

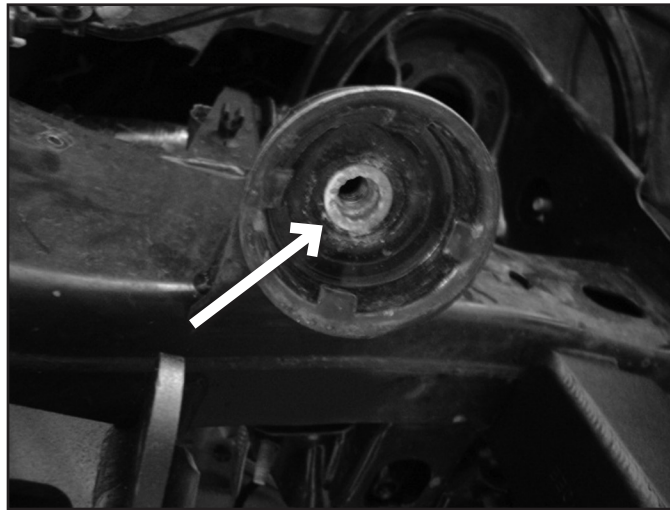


38. Clearance the hole inside the bump stop cup to 11/16", a step drill is highly recommended, if one is not available, a rotary die grinder can be used. Insert and seat 1/2" rivet nut. Follow rivet nut installation at the end of the instruction sheet. (Fig. 25)



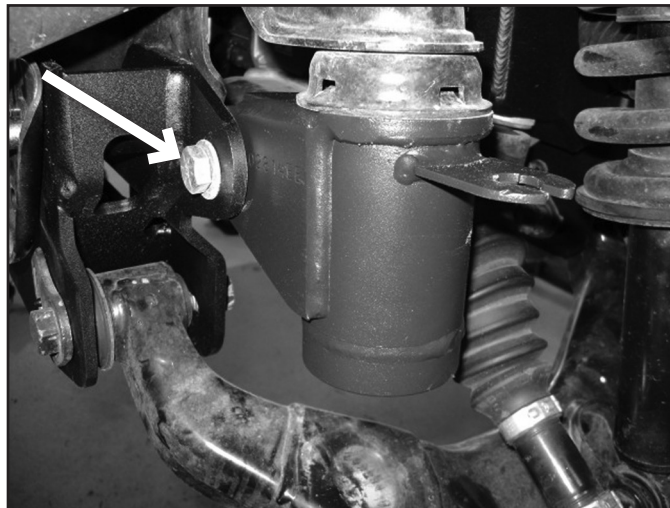
Tip See the end of the instruction sheet for how to install 1/2" rivet nuts. There is one extra rivet nut provided in the kit incase one is installed incorrectly. If both are installed correctly, there will be an extra rivet nut at the end of the installation.

FIG 25



39. Attach the new bump stop extension (02813 – DRV, 02814 – PASS) to the rivet nut with 1/2" x 2" hardware (use socket and extension to attach) and to the cross member with 1/2" x 1-1/4" bolt, washers, and nut. (BP #683) (Fig. 26)

FIG 26



40. Install lower control arms with factory cam bolts and nuts. It is recommended to run the front bolts from Rear to Front, and the rear bolts from Front to Rear so that the nuts are easily accessible. They must be torqued to 192 ft-lbs later in the installation. Snug, but do not tighten at this time.
41. Go back and tighten 5/8" Differential / Crossmember hardware to 180 ft-lbs., 9/16" differential hardware to 118 ft-lbs., Tighten 1/2" bump stop hardware to 65 ft-lbs.
42. Install the factory bump stops into the replacement bump stop brackets. Lube the bump stop with a small amount of grease, use a jack on the lower control arm to press the bump stops into the cup. (Fig. 27)

FIG 27



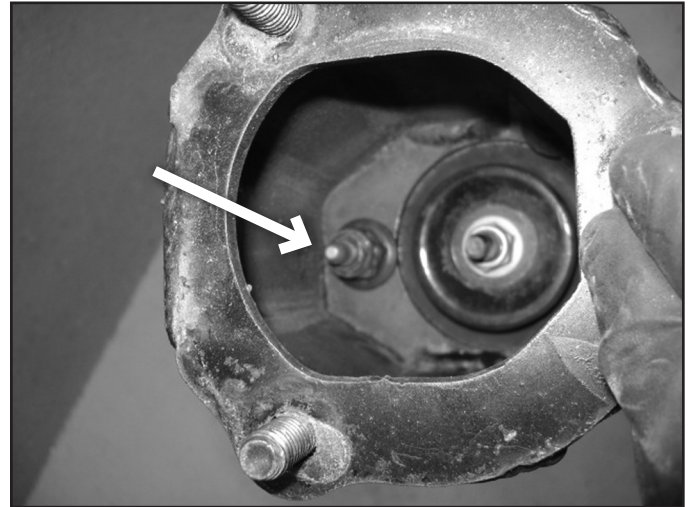
STRUT MODIFICATION

43. Locate the upper strut spacers (02812). Attach the strut spacers to the stock struts with factory hardware. Tighten to 43 ft-lbs. (Fig. 28a, 28b) Note: Use a 3/8" chrome 18mm socket with a 3/8" swivel to tighten the nut inside the strut spacer.

FIG 28A



FIG 28B



44. Install the strut and spacer into the vehicle. Attach the strut to the upper mount with new 3/8" nylock nuts and washers (BP #943). Attach lower mount to the lower control arm with factory bolts. Tighten the 3/8" hardware to 37 ft-lbs, do NOT tighten the lower mount at this time. It will be done at the end of the installation with the vehicle weight on the ground. (Fig. 29a, 29b)

FIG 29A

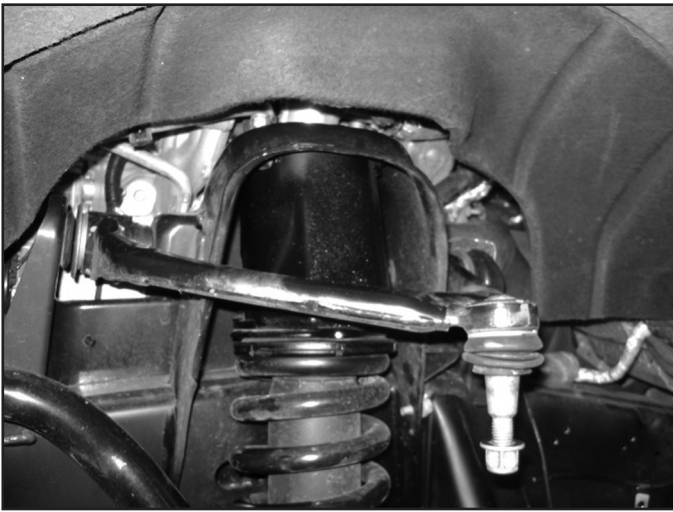
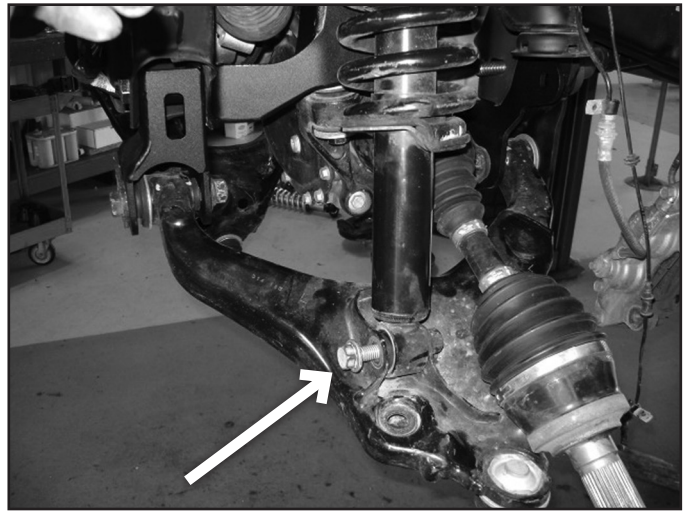


FIG 29B



OPTIONAL COILOVER INSTALLATION

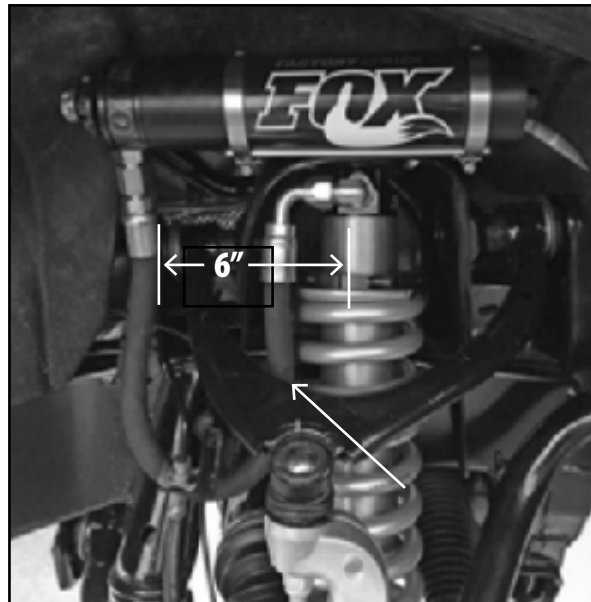
45. Install coilover assembly so that the hose is to the rear of the vehicle and loops below the upper control arm (Fig. 29). Attach reservoir bracket and upper mount with included hardware. Use factory lower hardware to attach the bottom.
46. Tighten upper hardware to 40 ft-lbs, lower hardware to the following: First Pass = 74 ft-lbs., Final Pass = 25-35 degrees
47. Attach reservoir to the bracket with included hose clamps (Fig. 29). Cycle the upper control arm to ensure clearance between the hose at full droop and clearance to the reservoir under compression.



Tip

Adjust reservoir so center of the coilover to inside edge of reservoir hose is approximately 6" apart. Check clearance through suspension travel.

FIG 29



KNUCKLE ASSEMBLY

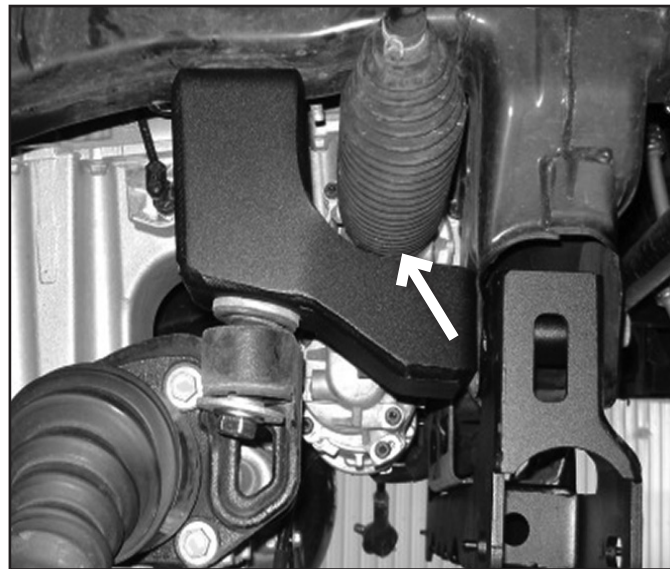
48. Remove the factory hub and dust shield from the stock knuckles. Transfer them over to the new steering knuckle. Note: You MUST install the dust shield, failure to do so will cause ABS problems. (Fig. 30)

FIG 30



49. Apply thread locker to the factory hub bolts, and tighten hub hardware to 95 ft-lbs.
50. Install grease zerk into new tie rod ends. Install the new tie rod ends onto the factory inner tie rods.
51. Install new steering knuckle assembly to the lower control arm and run the CV shaft through the hub. Attach upper ball joint and new tie rod end to knuckle assembly, use the included washer under the nut for the tie rod end.
52. Cycle steering lock-to-lock to check clearance of tie rod boot and differential drop brackets at full droop (Fig. 31).

FIG 31

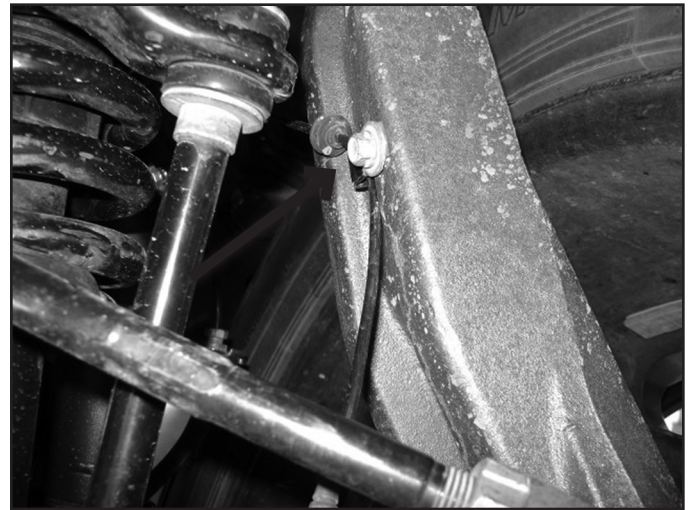


53. Using OE hardware, tighten to the following specifications:
 - Lower Ball Joint: First Pass = 48 ft-lbs, Final Pass = 60-75 degrees
 - Upper Ball Joint: First Pass = 37 ft-lbs, Final Pass = 90-110 degrees
 - Tie Rod End: First Pass = 26 ft-lbs, Final Pass = 85-95 degrees
 - CV Axle Nut: 185 ft-lbs
54. Reinstall the brake rotors with the torx bit holding the rotor to the hub assembly.
55. Reinstall the brake calipers with factory hardware. Tighten to 133 ft-lbs.
56. Clean any debris from the ABS sensors. Install the ABS sensors into the steering knuckle with factory hardware. Tighten to 11 ft-lbs. (Fig. 31b)
57. Attach the ABS sensor wire to the back of the steering knuckle with a new cable clamp (BP #683) and factory hardware. The grommet on the ABS wire can be slid by spraying it with silicone spray. Ensure there is adequate slack through wheel travel and full steering range of motion, ensure the ABS wire can not rub on the CV shaft. (Fig. 31c)

FIG 31B



FIG 31C



58. Install new sway bar links (911122) with (8) washers and (8) bushings (4805G). Orient link with machined flat closest to lower control arm. Attach with (4) 7/16" nylock nuts and 7/16" washers (BP #682). (Fig. 32)
59. Tighten the 7/16" nylock nuts to 12 ft-lbs. Do NOT over tighten the hardware.

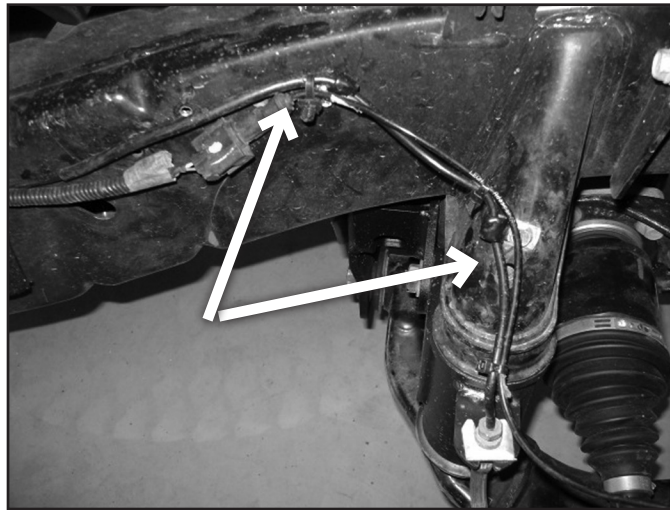
FIG 32



BRAKE LINE / ABS WIRE MODIFICATION

60. Carefully form the brake line to allow the mounting end to attach to the side of the bump stop cup. Reinstall the factory retaining clip to hold the brake line in place.
61. Reform the hard line slightly to create clearance from any sharp edges. Attach brake line to the side of the frame rail and the factory bump stop bracket by drilling 7/32" holes and using 3/16" cable clamps with 1/4" self threading bolts (BP #683). (Fig. 33)

FIG 33



62. Zip tie the ABS wires to the brakeline to allow adequate slack through wheel travel and turning motions.

INDEX RING INSTALLATION:

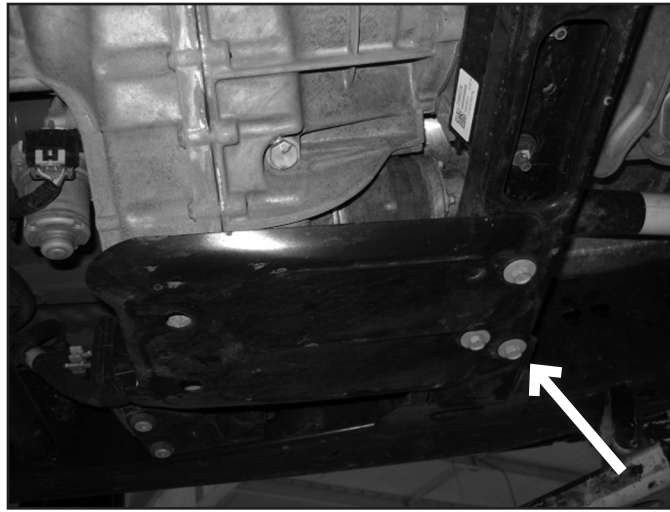
63. Note: The front driveshaft should be completely removed at this point, if it is not, remove and retain hardware, remove driveshaft from the vehicle.
64. Disconnect the U-joint hardware, remove straps, and disconnect rear drive shaft from the rear axle, remove rear driveshaft. (Fig. 34).

FIG 34



65. Remove the differential skid plate if equipped (3 bolts), it will not be reinstalled. (Fig. 35)

FIG 35



66. Disconnect the transfer case shift mechanism wiring harness, disconnect wiring harness clips from transfer case. (Fig 36a, Fig 36b)

FIG 36A



FIG 36B



67. Disconnect the breather from on top of the transfer case, above the front driveshaft output (Fig 37).

FIG 37



68. Support the transmission with a transmission jack, use extra care not to damage any surfaces on the transmission. Remove the factory transmission crossmember, remove the transmission mount, retain all hardware. (Fig. 38a, 38b)

FIG 38A



FIG 38B



69. Support the transfer case. Remove the 7 nuts that hold the transfer case to the transmission and remove the transfer case from the vehicle.
70. Remove the 7 studs from the transfer case. Double nut the factory nuts in order to remove them. (Fig. 39)

FIG 39

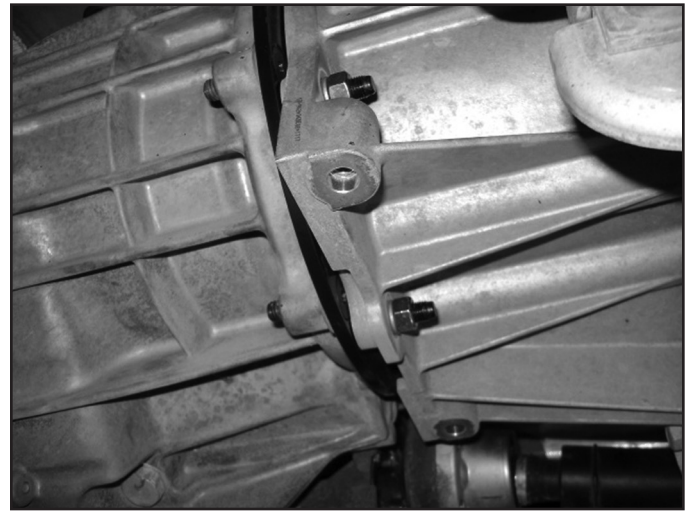


71. Match up the missing (2) studs to the indexing ring based on the model year split for trucks (2015-2016 / 2017-2021). Press the studs into the indexing ring so the head is at the same height as the remaining studs.



Tip *The indexing ring has a specific orientation, it will only go on one way, rotate until all of the holes align. Match the missing two studs up to the mating holes and install studs into the bracket.*

72. Install new index ring assembly with thread locker on the new 10mm Flat Head Allen Bolts (BP #827), leave the factory gasket on the transfer case. Tighten to 37 ft-lbs (Fig. 40a).
73. Reinstall transfer case with new indexing ring with new 3/8" washers and nuts, with thread locker on the threads (BP #827). Tighten to 37 ft-lbs. (Fig. 40b)

FIG 40A**FIG 40B**

74. Reinstall transmission mount and crossmember with factory hardware, reattach wiring harness, and transfer case breather. Reinstall the rear driveshaft with factory straps and hardware. Tighten all hardware to factory specifications.
75. The front crossover exhaust pipe will be close to the front driveshaft when installed. Loosely fit the front driveshaft and mark the area just below the driveshaft on the crossover pipe. Squish in the top part of the exhaust tube approximately 1/4" to create clearance when the driveshaft is installed. Use a clamp with support (On gas trucks only) on the bottom side, or use a torch to heat the area and dent in with a hammer (Fig. 41a).

! Caution *When front driveshaft is installed there will be approximately a 1/4" gap, this is not enough clearance when in 4wd and the crossover pipe must be modified.*

💡 Tip *Some models may have a larger clearance (greater than 1"). If applicable, this modification is not needed. Proceed to Step 76.*

76. For all model years, check driveshaft to exhaust flange clearance. If necessary, lightly trim downpipe/crossover pipe mating flanges as shown in Fig 41b. Take care not to damage flange nut and bolt.
77. Reinstall the front driveshaft. For driveshafts with a mounting flange use OE hardware with thread locker at the transfer case output and torque to OE specs. For driveshafts with CV style upper joint, reinstall driveshaft end yoke onto transfer case output shaft. Reattach dust boot to transfer case with OE dust boot clamp. For both, attach driveshaft to the front differential with new 10mm bolts (BP #828) with thread locker and driveshaft spacer (#02821). Torque to 48 ft-lbs. (Fig. 41c)

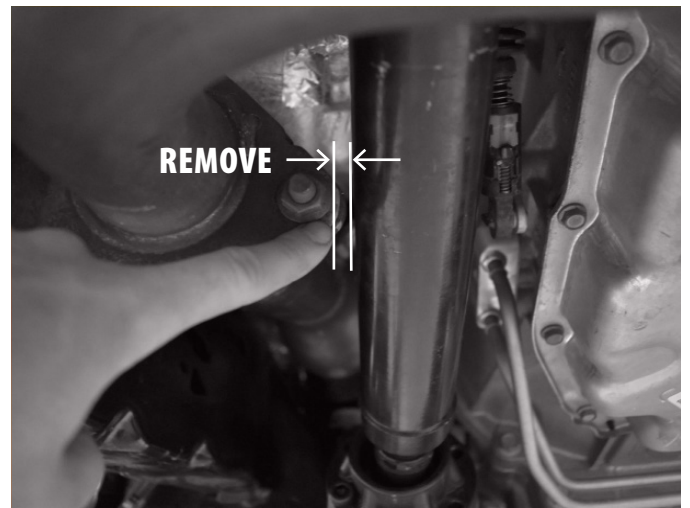
FIG 41A**FIG 41B**

FIG 41C



FINAL FRONT STEPS:

- 78. Recheck differential hardware for proper torque. Install skid plate (02811) with 1/2" x 1-1/4" bolts with washers (BP #683) Tighten to 65 ft-lbs.
- 79. Attach the backing plate to the backside of the front cross member with #10 stainless hardware (BP #683).
- 80. Recheck all front hardware for proper torque, cycle steering to check for adequate clearances.
- 81. Reinstall front wheels. Tighten to factory specifications.
- 82. Lower vehicle to the ground. Adjust Cams as shown (Fig. 42a - front, Fig. 42b - rear), Tighten Cam hardware to 192 ft-lbs. Tighten lower strut hardware to the following: First Pass = 74 ft-lbs., Final Pass = 25-35 degrees.



Tip *This is not the final alignment, but a good start for driving to an alignment shop. Adjust the toe-in to approximately 1/8" in, and straighten the steering wheel. Do NOT drive the vehicle with the steering wheel off-center.*

FIG 42A (FRONT)



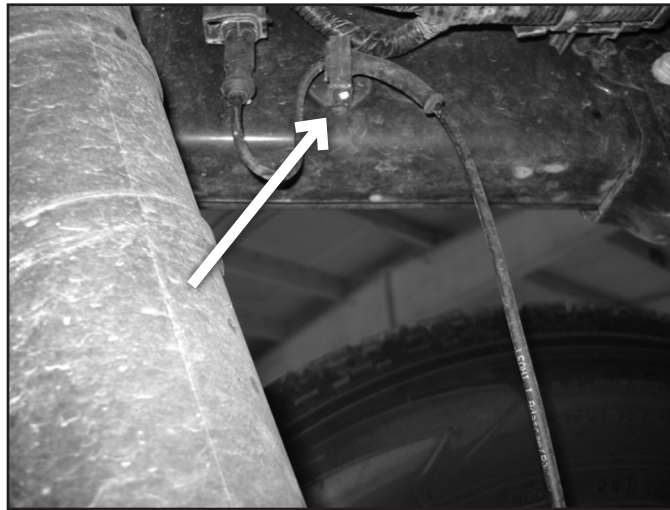
FIG 42B (REAR)



REAR INSTALLATION

- 83. Block the front wheels for safety. Raise the rear of the vehicle and support frame rails with jackstands.
- 84. Remove the stock wheels and tires.
- 85. Disconnect the ABS wire from the clip on the side of the frame rail, this will allow extra slack in the ABS line. (Fig. 43)

FIG 43



86. Remove the e-brake cable guide bracket from the side of the frame rail on the driver's side. It will not be reinstalled.
87. Form the stock brake line upper bracket 'down' to gain adequate slack. Use an adjustable wrench to form the stock brake line bracket down. (Fig. 44a, 44b)

FIG 44A



FIG 44B



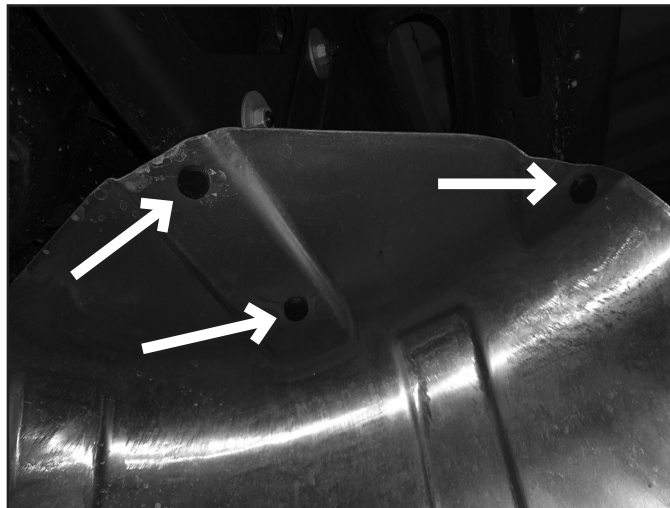
88. Working on one side of the vehicle at a time. Support the axle with a hydraulic jack, remove the factory u-bolts. Remove the stock shocks, retain hardware (Fig. 45).
89. Diesel Models Only: To remove the driver side upper shock bolt the DEF tank may be needed to be slid over to provide clearance. If the bolt cannot be removed, follow these instructions to provide clearance to the DEF tank.

FIG 45



90. Lower the spare tire and remove the spare tire from the vehicle. Follow the factory manual for removal of the spare tire. Remove the heat shield protecting the spare tire from the exhaust. There are 3 plastic push pins supporting the heat shield (Fig. 46).

FIG 46



91. Support the DEF tank with a jack. Remove the two bolts supporting the front of the DEF tank (Fig. 47). Remove the bolt on the passenger side of the DEF tank (Fig. 48).

FIG 47

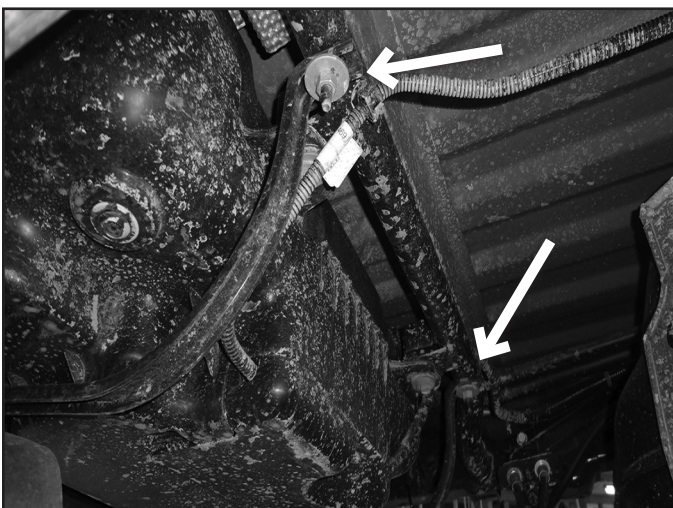


FIG 48

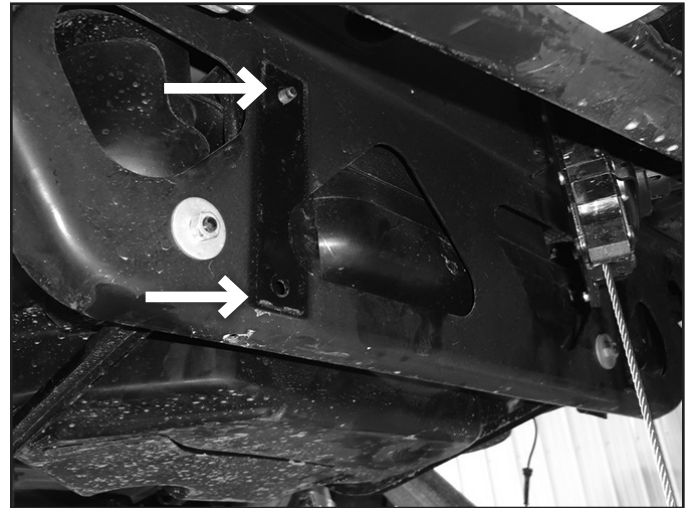


92. Remove the two nuts on the back side of the DEF tank (Fig. 49). The support brackets on the back side of the DEF may also need to be loosened in order to slide the DEF tank over (Fig. 50).

FIG 49



FIG 50



93. Slide the DEF tank towards the passenger side of the vehicle until there is enough clearance to remove the driver side upper shock bolt. Install the new shock with the OEM shock bolt. After the new shock is installed, reinstall the DEF tank in the reverse sequence.
94. Lower the axle and install new lift block. Install new u-bolts with nuts and washers. Snug but do not tighten at this time. (Fig. 51a, 51b)
- Note: The lift block will have two holes in it. Use the centered hole when lining up with the pin in the leaf spring.*

FIG 51A



FIG 51B



95. Repeat block installation on opposite side of vehicle.
96. Grease and install new bushings and sleeves into shocks. Install the shocks with factory hardware. Tighten to 55 ft-lbs.
97. Lower the axle and check for adequate slack in the brake lines and abs wire, adjust as necessary.
98. Slide the grommet on the ABS wire on the passenger's side by the exhaust upwards (use silicone spray to allow the grommet to slide easily). Slide the ABS wire heat shield tubing upwards and secure with a zip tie. (Fig. 52a)
99. Attach the ABS wire to the u-bolt with included zip tie (Fig. 52b), repeat on opposite side.

FIG 52A



FIG 52B



100. Use two zip ties, secure the e-brake cables together in front of where the old e-brake cable guide bracket contacted the cables. (Fig. 53)

FIG 53



101. Install wheels, tighten lug nuts to factory specifications.
102. Lower the vehicle to the ground and torque u-bolts to the following: First Pass = 59 ft-lbs., Final Pass = 125-135 degrees.
103. Reconnect the battery.
104. Recheck all hardware for proper torque. Check again after 500 miles.
105. A front end alignment is now required. Ensure the lower cam bolts are torqued to 192 ft-lbs after alignment.

OPTIONAL WELD ON STEERING STOPS:

106. Included are optional weld on steering stops. These can be welded to the lower control arm to reduce rubbing or eliminate any interference issues that may be present at full steering lock. Disconnect the battery, prep lower control arm for welding, weld steering stop onto the lower control arm as shown. Coat with paint when completed. (Fig 54a, 54b)

FIG 54A



FIG 54B



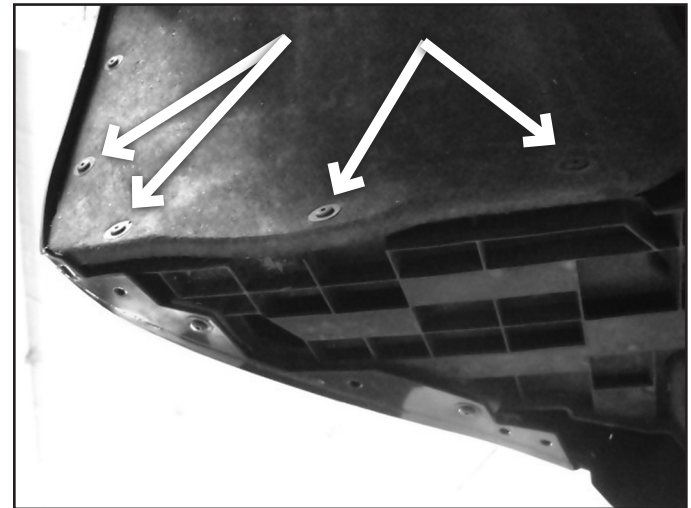
FRONT FENDER WELL MODIFICATION FOR TIRE CLEARANCE:

107. Remove the 4 lower T-15 Torx head bolts that hold the fender well to the plastic support piece. (Fig. 55a, 55b)

FIG 55A



FIG 55B

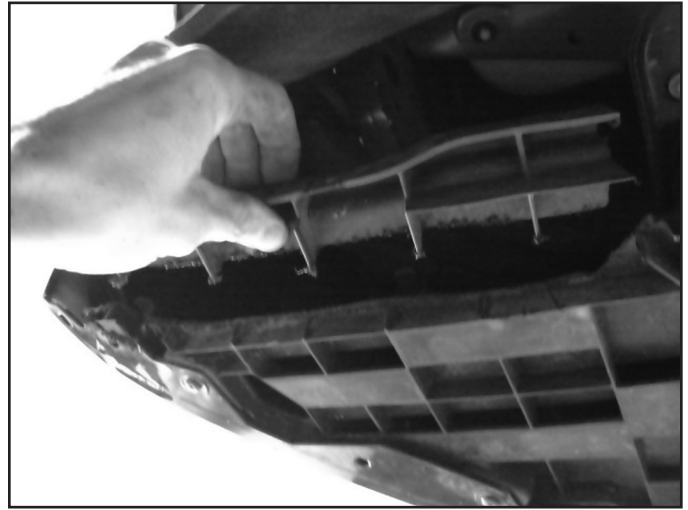


108. Trim back to the first full support rib. Remove this section from the support piece. (Fig. 56a, 56b)

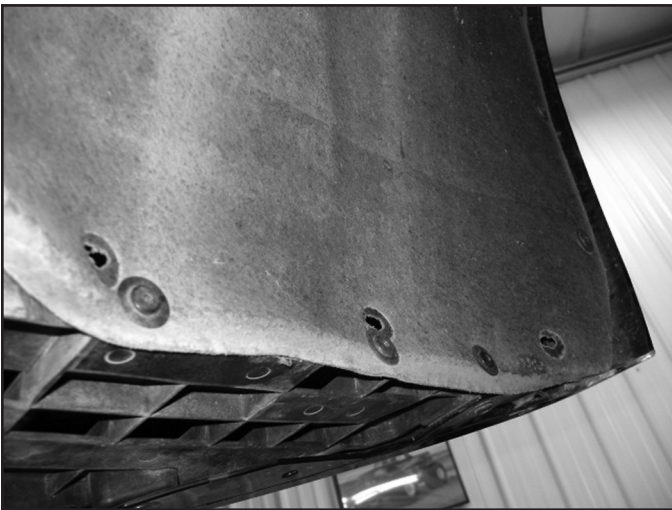


Tip

A sawzall works well for trimming the factory plastic. A box cutter style knife with the blade heated by a MAP gas / propane torch cuts the factory plastic bumper cover nicely and leaves a good smooth finish.

FIG 56A**FIG 56B**

109. Remove the nut clips from the trimmed piece. Hold the inner fender well up to the front support piece and drill new holes for the mounting hardware at a convenient location. Attach the inner fender to the plastic support piece with factory torx bit hardware. Trim a slight amount on the plastic bumper cover for additional clearance if required. (Fig 57a, 57b)

FIG 57A**FIG 57B**

RIVET NUT INSTALLATION INSTRUCTIONS

RIVET NUT SIZING

1. Verify the correct size rivet nut for the application based on the thickness of material where the rivet nut is to be installed using the following chart.

Part Number	Thread Size	Body Length (in)	Material Thickness (in)		Drill Size (in)
			Min.	Max.	
95105A159	3/8-16	.690	.027	.150	17/32
95105A168	3/8-16	.805	.150	.312	17/32
95105A169	1/2-13	1.150	.063	.200	11/16
95105A170	1/2-13	1.300	.200	.350	11/16

HOLE PREPARATION

2. Drill hole to appropriate size for rivet nut installation. 1/2" Rivnuts require an 11/16" hole and 3/8" Rivnuts require a 17/32" drill. It is critical that this hole is drilled to the correct size. Remove any burrs that could keep the rivet nut from seating flat against either side of the hole surface.

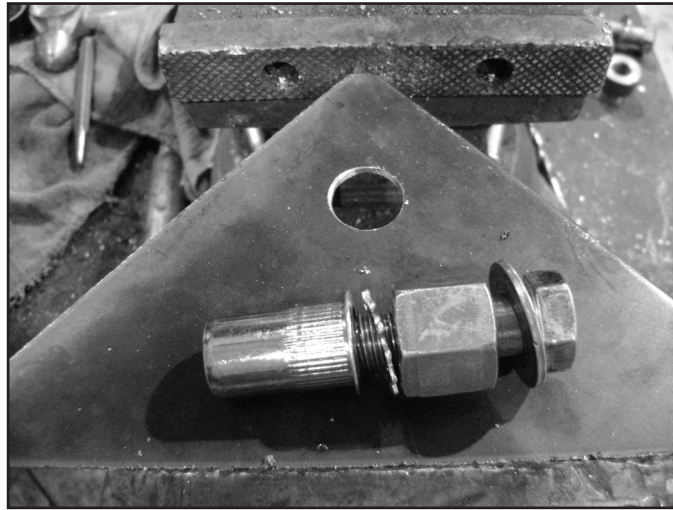


Tip *If the correct drill size is not available, it is possible to drill the hole to an available smaller size and slowly grind it out to until the rivet nut fits tight.*

RIVET NUT INSTALLATION TOOL ASSEMBLY

3. For a 3/8" rivet nut, place the provided 3/8" SAE flat washer on the 3/8" x 1-1/2" bolt, followed by 7/16" hex nut and then a 3/8" serrated washer. (Fig. 1) Thread this tool assembly into the rivet nut.
4. For a 1/2" rivet nut, place the provided 1/2" SAE washer on a 1/2" x 2" bolt followed by a 9/16" high nut and 1/2" serrated edge lock washer. Thread this tool assembly into the rivet nut as shown. (Fig. 1)

FIGURE 1- 1/2" RIVET NUT SHOWN



RIVET NUT INSTALLATION

5. Place the installation tool with the rivet nut threaded on the end into the appropriately sized hole.
6. For a 3/8" rivet nut, hold the nut closest to the rivet nut still with an 5/8" wrench and tighten the 3/8" bolt with a 9/16" wrench to set the rivet nut. Be sure to hold the rivet nut flush to the surface and square to the hole as it is tightened. (Fig. 2)



Tip *If available, an impact gun is recommended for tightening the bolt to ensure the rivet nut remains square to the hole and to ease holding the nut from spinning.*

7. For a 1/2" rivet nut, hold the nut closest to the rivet nut still with an 7/8" wrench and tighten the 1/2" bolt with a 3/4" wrench to set the rivet nut. Be sure to hold the rivet nut flush to the surface and square to the hole as it is tightened. (Fig. 2)

FIGURE 2 - 1/2" RIVET NUT SHOWN



TORQUE SPECIFICATIONS

8. 3/8" rivet nuts will approach 40 ft. lbs for maximum grip strength. Do not exceed 45 ft-lbs when setting the rivet nut.
9. 1/2" rivet nuts will approach 90 ft lbs for maximum grip strength. Do not exceed 100 ft-lbs when setting the rivet nut.



Tip *Note: If using the recommended impact gun, use caution to not exceed the recommended torque specifications.*

RIVET NUT TOOL REMOVAL

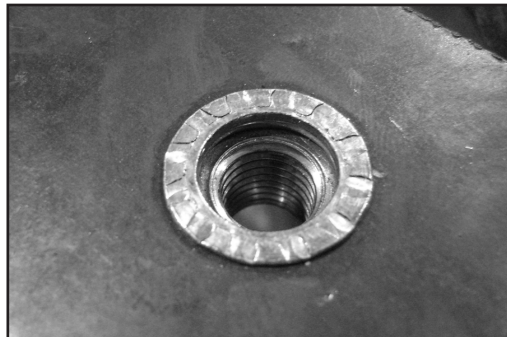
10. Once the center bolt is tightened, remain holding the nut from spinning with the wrench and loosen the center bolt to remove the installation tool.



Caution *It is very important to hold the nut as the bolt is loosened because the grip of the star washer will try to spin the rivet nut and ruin the installation.*

11. Verify proper installation by checking for consistent rivet nut deformation to see the threads are square and centered to the rivet nut. (Fig. 3)

FIGURE 3





WE WANT TO SEE YOUR RIDE!

Grab photos of your BDS-equipped truck in action and send them in for a chance to be featured. Send it in to our Bad Ass Rides customer gallery at bds-suspension.com/bar and post them on the BDS Fan Page on Facebook at facebook.com/BDSSuspensions. Don't forget about your BDS swag! BDS offers t-shirts, hoodies, decals and more available on the BDS website or through your local BDS distributor.

TIME TO HAVE SOME FUN

Thank you for choosing BDS Suspension.

For questions, technical support and warranty issues relating to this BDS Suspension product, please contact your distributor/installer before contacting BDS Suspension directly.