



491 W. Garfield Ave., Coldwater, MI 49036

Phone: 517-279-2135

Web/live chat: [www.bds-suspension.com](http://www.bds-suspension.com)

E-mail: [tech-bds@ridefox.com](mailto:tech-bds@ridefox.com)

Part#: 013403

**Front Box Kit**

Ford F350 Pickup

---

## READ AND UNDERSTAND ALL INSTRUCTIONS AND WARNINGS PRIOR TO INSTALLATION OF SYSTEM AND OPERATION OF VEHICLE.

---

**SAFETY WARNING** BDS Suspension Co. recommends this system be installed by a professional technician. In addition to these instructions, professional knowledge of disassembly/ reassembly procedures and post installation checks must be known.

**PRODUCT SAFETY WARNING** Certain BDS Suspension products are intended to improve off-road performance. Modifying your vehicle for off-road use may result in the vehicle handling differently than a factory equipped vehicle. Extreme care must be used to prevent loss of control or vehicle rollover. Failure to drive your modified vehicle safely may result in serious injury or death. BDS Suspension Co. does not recommend the combined use of suspension lifts, body lifts, or other lifting devices.

You should never operate your modified vehicle under the influence of alcohol or drugs. Always drive your modified vehicle at reduced speeds to ensure your ability to control your vehicle under all driving conditions. Always wear your seat belt.

### PRE-INSTALLATION NOTES

1. Special literature required: OE Service Manual for model/year of vehicle. Refer to manual for proper disassembly/reassembly procedures of OE and related components.
2. Adhere to recommendations when replacement fasteners, retainers and keepers are called out in the OE manual.
3. Larger rim and tire combinations may increase leverage on suspension, steering, and related components. When selecting combinations larger than OE, consider the additional stress you could be inducing on the OE and related components.
4. Post suspension system vehicles may experience drive line vibrations. Angles may require tuning, slider on shaft may require replacement, shafts may need to be lengthened or trued, and U-joints may need to be replaced.
5. Secure and properly block vehicle prior to installation of BDS Suspension components. Always wear safety glasses when using power tools.
6. If installation is to be performed without a hoist, BDS Suspension Co. recommends rear alterations first.
7. Due to payload options and initial ride height variances, the amount of lift is a base figure. Final ride height dimensions may vary in accordance to original vehicle attitude. Always measure the attitude prior to beginning installation.

### POST-INSTALLATION WARNINGS

1. Check all fasteners for proper torque. Check to ensure for adequate clearance between all rotating, mobile, fixed, and heated members. Verify clearance between exhaust and brake lines, fuel lines, fuel tank, floor boards and wiring harness. Check steering gear for clearance. Test and inspect brake system.
2. Perform steering sweep to ensure front brake hoses have adequate slack and do not contact any rotating, mobile or heated members. Inspect rear brake hoses at full extension for adequate slack. Failure to perform hose check/ replacement may result in component failure. Longer replacement hoses, if needed can be purchased from a local parts supplier.
3. Perform head light check and adjustment.
4. Re-torque all fasteners after 500 miles. Always inspect fasteners and components during routine servicing.

## PARTS LIST

Part #	Qty	Description
	4	9/16 x 3-1/8 x 9" Square U-bolt
	8	9/16" Fine High Nut
	8	9/16" Flatwasher
01035	1	Track Bar Relocation Brkt
	3	1/2" x 2" bolt w/ nuts
	2	5/8 x 3.6" sleeve
	2	3/8" x 4-1/2" Bolt w/ nut & washers

## INSTALLATION INSTRUCTIONS

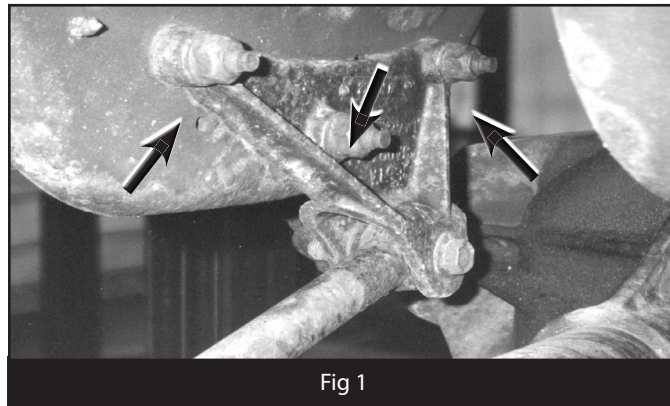
### PRE-INSTALLATION INSTRUCTIONS

Measure from the center of the wheel up to the bottom edge of the wheel opening

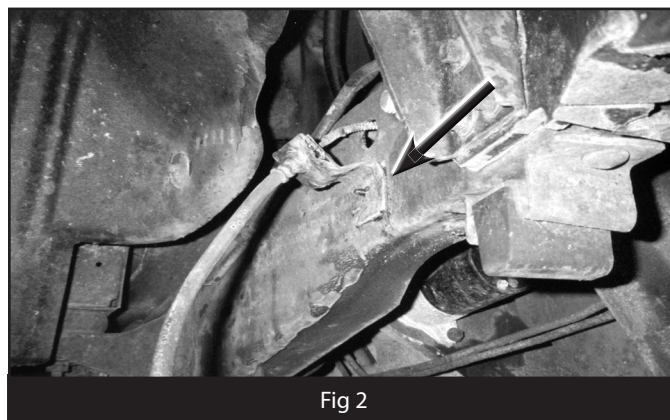
LF \_\_\_\_\_ RF \_\_\_\_\_ LR \_\_\_\_\_ RR \_\_\_\_\_

### INSTALLATION INSTRUCTIONS

1. Park and secure the vehicle on a hard, level surface. Block the rear tires for safety.
2. Disconnect the track bar bracket from the frame by removing the three mounting bolts (Fig. 1). Retain hardware.



3. Raise the front of the vehicle so the axle is hanging freely and the tires are off of the ground. Support the vehicle with jack stands under the frame rail behind the spring hangers.
4. Remove the tires and wheels.
5. Remove the OE shocks and retain hardware.
6. If equipped, disconnect the front sway bar from the frame. Retain hardware.
7. Complete the following steps one side at a time:
8. Carefully bend brake line brackets mounted to the frame down about 45 degrees (Fig. 2). This will allow for extra slack in the line to accommodate the lift.



9. Place a floor jack under the axle to support it. Remove the spring U-bolts.
10. Remove the leaf spring eye bolts and retain for later use. Lower the axle and remove the OE spring. Caution: Do not over extend the brake lines.
11. Install the new leaf spring in the vehicle using the stock hardware. Do not tighten hardware at this time. The spring eye bolts must be tightened with the vehicle on the ground. Note: The leaf spring center pin is offset. The long end of the spring goes toward the rear.
12. Install the new spring U-bolts with supplied high nuts and washers. Torque to 120 ft-lbs.
13. Repeat the above steps on the other side of the vehicle.
14. Install the track bar relocation bracket to the frame using the original track bar bracket mounting holes with three 1/2" x 2" bolts and nuts. Attach the OE track bar bracket to the relocation bracket with the OE hardware (Fig. 3). Torque to 75 ft-lbs.

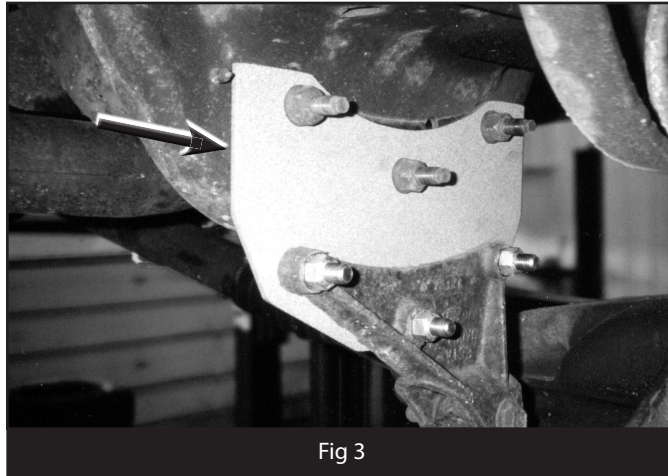


Fig 3

15. Install the new BDS shocks using the OE hardware.
  16. Install pitman arm. A pitman arm or steering block is recommended to be used with this kit. Pitman arm required will vary with axle type. Pitman arms are available through BDS.
  17. If equipped with a sway bar, install sway bar extensions or drop brackets as necessary. A sway bar drop kit is available through BDS.
  18. Install the wheels and tires. Lower the vehicle to the ground.
  19. With the full weight of the vehicle resting on the springs, tighten the leaf spring eye bolts to OE specifications.
- ⓘ Note: The 3/8" x 4-1/2" bolts and sleeves are used in lifting the rear of the vehicle. See rear installation instructions at this time.

## POST-INSTALLATION CHECKS

20. Measure from the center of the wheel up to the bottom edge of the wheel opening  
 LF\_\_\_\_\_ RF\_\_\_\_\_ LR\_\_\_\_\_ RR\_\_\_\_\_
21. The difference in these measurements and the pre-installation measures indicates the amount of lift achieved.
22. Install warning card on rear view mirror for vehicle operator.
23. Check all fasteners for proper torque. Check all fasteners after 500 miles.
24. Adjust headlights.
25. A complete front end alignment should be done after installation of this kit.

---

## NOTICE TO DEALER/INSTALLER

These instructions, the warning card, and included decals must be given to the owner of this BDS Suspension product.

---

For questions, technical support and warranty issues relating to this BDS Suspension product, please contact your distributor/installer before contacting BDS Suspension directly.

Sold/Installed by: