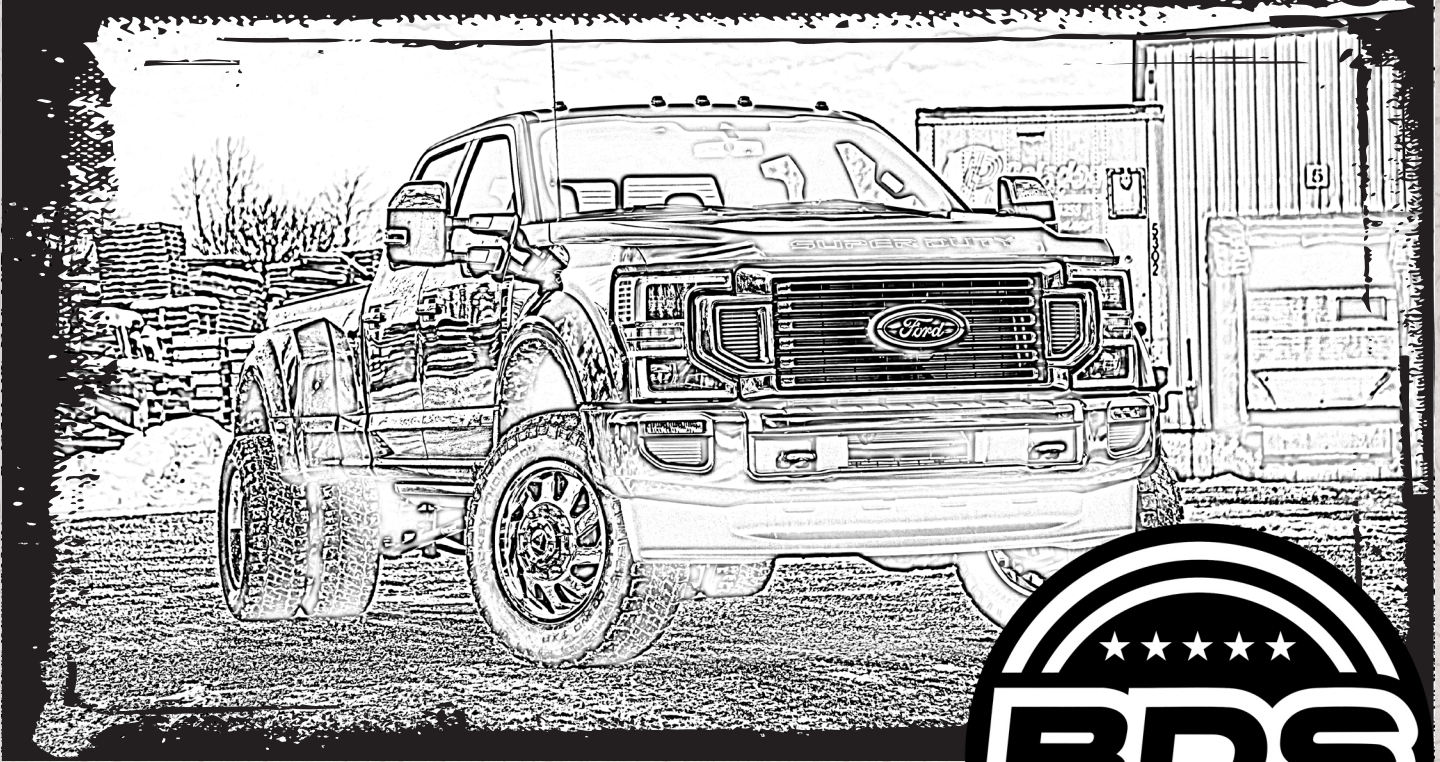


INSTALLATION GUIDE



Part#: 55384



HARDCORE LIMITED LIFETIME WARRANTY

Double Shear Dual Steering Stabilizer Kit

Ford F-450/ Ford F-550/ Ford F-600 4WD | 2017-2025

Rev.120325

491 W. Garfield Ave., Coldwater, MI 49036 • Phone: 517-279-2135

E-mail: tech-bds@ridefox.com

Read And Understand All Instructions And Warnings Prior To Installation Of System And Operation Of Vehicle.



THANK YOU

Your truck is about to be fitted with the best suspension system on the market today. That means you will be driving the baddest looking truck in the neighborhood, and you'll have the warranty to ensure that it stays that way for years to come.

Thank you for choosing BDS Suspension!

BEFORE YOU START

BDS Suspension Co. recommends this system be installed by a professional technician. In addition to these instructions, professional knowledge of disassembly/ reassembly procedures and post installation checks must be known.

FOR YOUR SAFETY

Certain BDS Suspension products are intended to improve off-road performance. Modifying your vehicle for off-road use may result in the vehicle handling differently than a factory equipped vehicle. Extreme care must be used to prevent loss of control or vehicle rollover. Failure to drive your modified vehicle safely may result in serious injury or death. BDS Suspension Co. does not recommend the combined use of suspension lifts, body lifts, or other lifting devices. You should never operate your modified vehicle under the influence of alcohol or drugs. Always drive your modified vehicle at reduced speeds to ensure your ability to control your vehicle under all driving conditions. Always wear your seat belt.

BEFORE INSTALLATION

- Special literature required: OE Service Manual for model/year of vehicle. Refer to manual for proper disassembly/reassembly procedures of OE and related components.
- Adhere to recommendations when replacement fasteners, retainers and keepers are called out in the OE manual.
- Larger rim and tire combinations may increase leverage on suspension, steering, and related components. When selecting combinations larger than OE, consider the additional stress you could be inducing on the OE and related components.
- Post suspension system vehicles may experience drive line vibrations. Angles may require tuning, slider on shaft may require replacement, shafts may need to be lengthened or trued, and U-joints may need to be replaced.
- Secure and properly block vehicle prior to installation of BDS Suspension components. Always wear safety glasses when using power tools.
- If installation is to be performed without a hoist, BDS Suspension Co. recommends rear alterations first.
- Due to payload options and initial ride height variances, the amount of lift is a base figure. Final ride height dimensions may vary in accordance to original vehicle attitude. Always measure the attitude prior to beginning installation.



Visit 560plus.com for more information.

BEFORE YOU DRIVE

Check all fasteners for proper torque. Check to ensure for adequate clearance between all rotating, mobile, fixed, and heated members. Verify clearance between exhaust and brake lines, fuel lines, fuel tank, floor boards and wiring harness. Check steering gear for clearance. Test and inspect brake system.

Perform steering sweep to ensure front brake hoses have adequate slack and do not contact any rotating, mobile or heated members. Inspect rear brake hoses at full extension for adequate slack. Failure to perform hose check/ replacement may result in component failure. Longer replacement hoses, if needed can be purchased from a local parts supplier.

Perform head light check and adjustment.

Re-torque all fasteners after 500 miles. Always inspect fasteners and components during routine servicing.

CONTENTS OF YOUR KIT

55384 Box Kit		
Part #	Qty	Description
05213	1	Center Stabilizer Bracket
05116	1	Driver's Side Top Bracket
05117	1	Passenger's Side Top Bracket
05118	1	Driver's Side Bottom Bracket
05119	1	Passenger's Side Bottom Bracket
BP1027	1	Bolt Pack
	4	1/2"-13 x 3" Bolt
	4	1/2"-13 Prevailing Torque Nut
	8	1/2 SAE Washer
	4	7/16" USS Washer
	4	7/16"-20 Prevailing Torque Nut
	8	5/16"-18 x 2-1/2" Bolt
	8	5/16"-18 Prevailing Torque Nut
	16	5/16" SAE Washer
764140434RB	2	7/16" x 4-1/4" x 4-3/4" U-Bolt
01572	1	BDS Badge
887	1	Rivet Bolt Pack
01578	1	Name Mounting Plate

TROUBLESHOOTING INFORMATION FOR YOUR VEHICLE

1. Dual stabilizer setup will increase dampening forces, on Superduty's it may be necessary to manually return the steering wheel to center (approximately 5-10 degrees) after turns due to increased resistance. This kit is specifically recommended for oversized tires or wheels with a large negative offset.
2. Rivet gun required for BDS Badge installation.



**TECH
TIPS**

INSTALLATION INSTRUCTIONS

INSTALLATION INSTRUCTIONS

1. Park vehicle on clean, flat, and level surface. Block rear wheels for safety. Center the steering wheel so wheels are straight ahead.
2. It is recommended to remove the stock steering stabilizer at this time.
3. Place the center bracket on the axle so the mount goes over top of the tie rod. Attach with 7/16" u-bolts, washers, and nuts. Adjust the bracket so that it is level (1/4" gap above the tie rod), and tighten to 40 ft-lbs. (Fig 1)

SPECIAL TOOLS

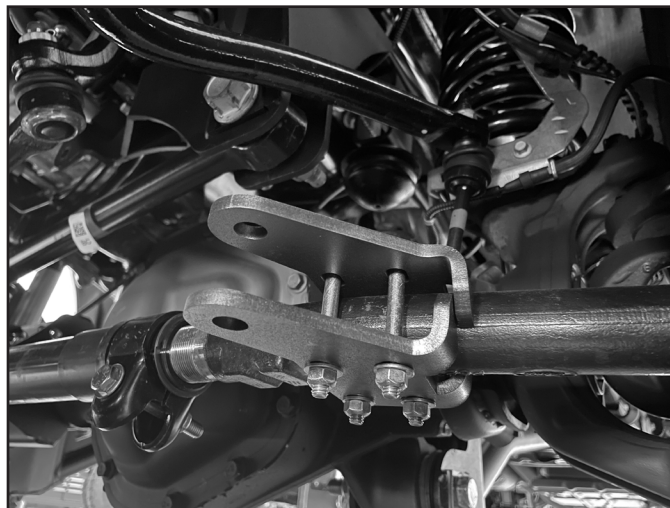
Rivet Gun

FIGURE 1



4. Install outer brackets as shown. Note: The flashing on the tie rod end forgings may cause interference with the brackets. Give them a slight tap, or rotate them on to fit over the tie rod end. Adjust outer bracket so that the center bracket hole to outer bracket hole measures 22-3/4". Install 5/16" bolts, washers and nuts. Install cylinder into both brackets leave hardware loose. (Fig 2)

FIGURE 2

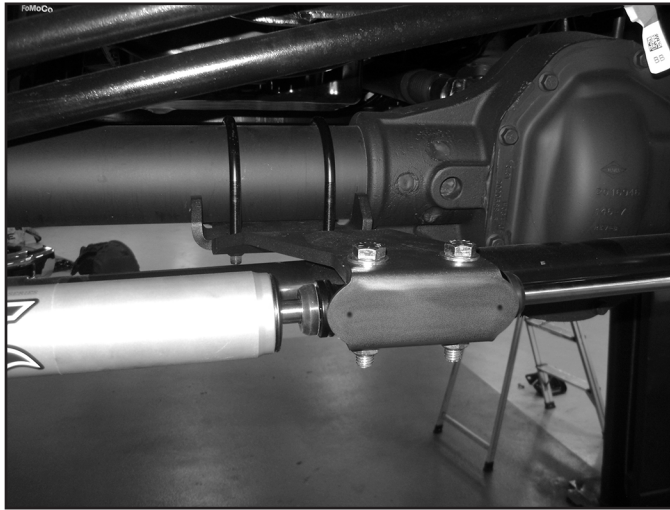


5. Install the longer bushings and sleeves into the body end of the stabilizers and the shorter bushings and sleeves into the shaft eyelet side.
6. Install stabilizer into the brackets. Use 1/2" x 3" hardware to secure the stabilizers to the mounts. The body of the stabilizer will go to the outside brackets. Snug 1/2" hardware, do not tighten (Fig 3), snug 5/16" hardware, do not tighten. (Fig. 4)

FIGURE 3

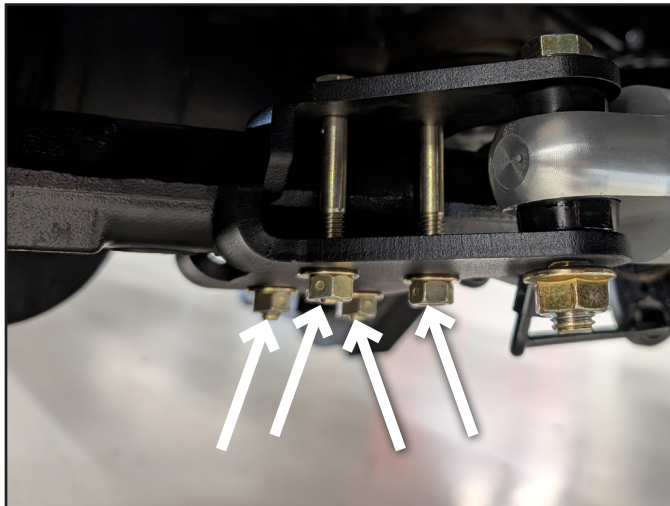


FIGURE 4



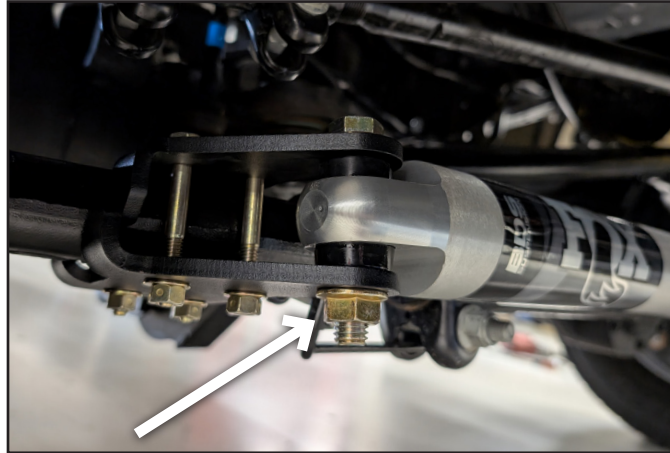
7. **IMPORTANT TORQUE PROCEDURE:** Torque the 4 outside brackets bolts to 10 lbft first, then torque **ONLY** the 2 front bolts to 15 lb-ft. (Fig.5)

FIGURE 5



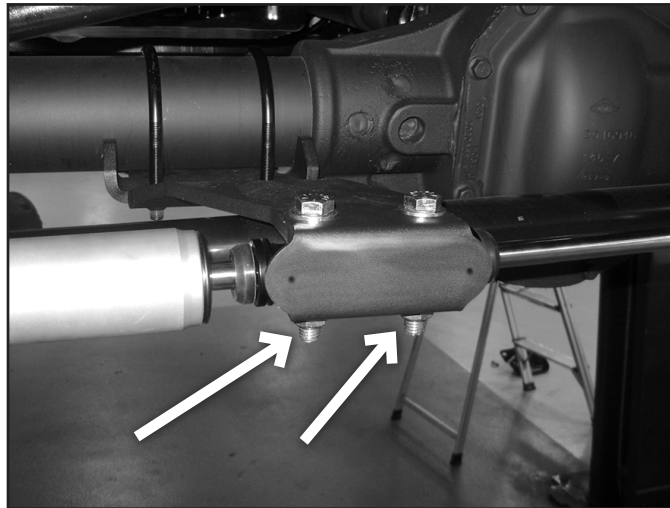
- Torque the 1/2" hardware to 40 lb-ft. (Fig 6).

FIGURE 6



- Torque the 5/16" hardware to 18 lb-ft. (Fig. 7)

FIGURE 7



- The badge can now be riveted on to the front plate using the provided 1/8" rivets. Any residue on the badge can be cleaned up using alcohol or brake cleaner before install.
- CYCLE THE STEERING AND CHECK FOR ADEQUATE CLEARANCE AND STROKE OF THE STABILIZERS.
- Recheck hardware for proper torque after 500 miles.



WE WANT TO SEE YOUR RIDE!

Grab photos of your BDS-equipped truck in action and send them in for a chance to be featured. Send it in to our Bad Ass Rides customer gallery at bds-suspension.com/bar and post them on the BDS Fan Page on Facebook at facebook.com/BDSSuspensions. Don't forget about your BDS swag! BDS offers t-shirts, hoodies, decals and more available on the BDS website or through your local BDS distributor.

TIME TO HAVE SOME FUN

Thank you for choosing BDS Suspension.

For questions, technical support and warranty issues relating to this BDS Suspension product, please contact your distributor/installer before contacting BDS Suspension directly.