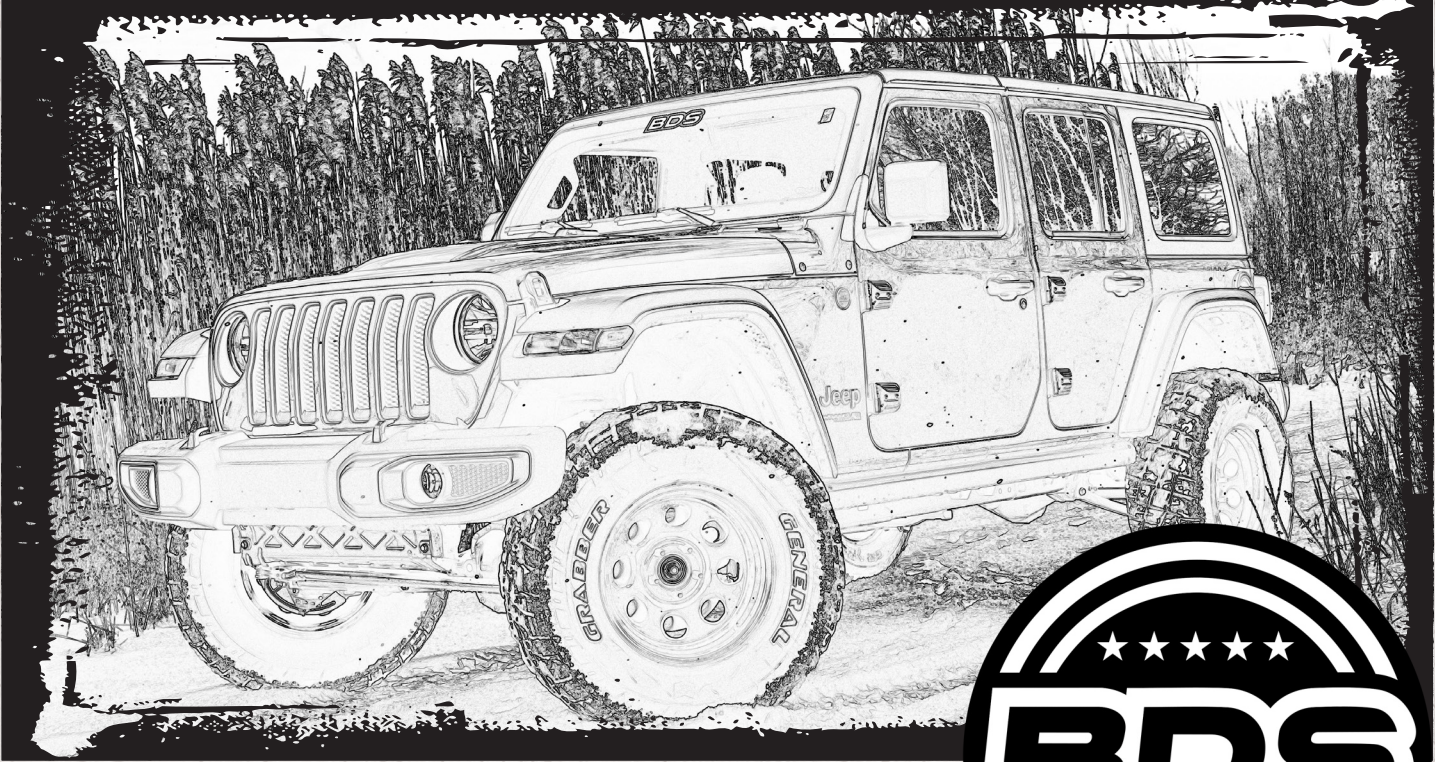


# INSTALLATION GUIDE



Part#: 55381



**HARDCORE LIMITED LIFETIME WARRANTY**

## Dual Steering Stabilizer

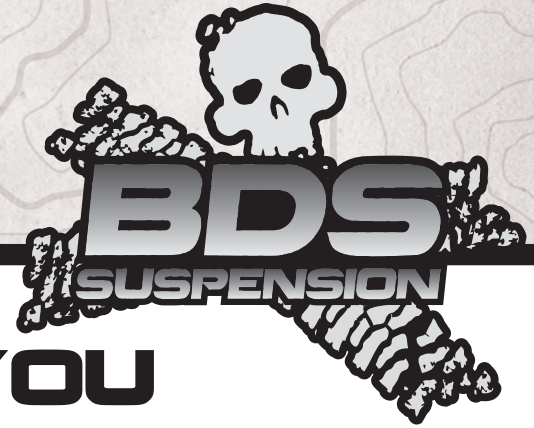
Jeep Wrangler JL | 2018-2025

491 W. Garfield Ave., Coldwater, MI 49036 • Phone: 517-279-2135

Web: [www.bds-suspension.com](http://www.bds-suspension.com) • E-mail: [tech-bds@ridefox.com](mailto:tech-bds@ridefox.com)

Rev. 121225

# Read And Understand All Instructions And Warnings Prior To Installation Of System And Operation Of Vehicle.



## THANK YOU

Your jeep is about to be fitted with the best suspension system on the market today. That means you will be driving the baddest looking truck in the neighborhood, and you'll have the warranty to ensure that it stays that way for years to come. Thank you for choosing BDS Suspension!

### BEFORE YOU START

BDS Suspension Co. recommends this system be installed by a professional technician. In addition to these instructions, professional knowledge of disassembly/ reassembly procedures and post installation checks must be known.

### FOR YOUR SAFETY

Certain BDS Suspension products are intended to improve off-road performance. Modifying your vehicle for off-road use may result in the vehicle handling differently than a factory equipped vehicle. Extreme care must be used to prevent loss of control or vehicle rollover. Failure to drive your modified vehicle safely may result in serious injury or death. BDS Suspension Co. does not recommend the combined use of suspension lifts, body lifts, or other lifting devices. You should never operate your modified vehicle under the influence of alcohol or drugs. Always drive your modified vehicle at reduced speeds to ensure your ability to control your vehicle under all driving conditions. Always wear your seat belt.

### BEFORE INSTALLATION

- Special literature required: OE Service Manual for model/year of vehicle. Refer to manual for proper disassembly/reassembly procedures of OE and related components.
- Adhere to recommendations when replacement fasteners, retainers and keepers are called out in the OE manual.
- Larger rim and tire combinations may increase leverage on suspension, steering, and related components. When selecting combinations larger than OE, consider the additional stress you could be inducing on the OE and related components.
- Post suspension system vehicles may experience drive line vibrations. Angles may require tuning, slider on shaft may require replacement, shafts may need to be lengthened or trued, and U-joints may need to be replaced.
- Secure and properly block vehicle prior to installation of BDS Suspension components. Always wear safety glasses when using power tools.
- If installation is to be performed without a hoist, BDS Suspension Co. recommends rear alterations first.
- Due to payload options and initial ride height variances, the amount of lift is a base figure. Final ride height dimensions may vary in accordance to original vehicle attitude. Always measure the attitude prior to beginning installation.



Visit [560plus.com](http://560plus.com) for more information.  
**TRACTION CONTROL**

In an effort to reduce the risk of rollover crashes the National Highway Traffic Safety Administration (NHTSA) established the Federal Motor Vehicle Safety Standard (FMVSS) No. 126 requiring all new passenger vehicles under 10,000 lbs GVWR include an electronic stability control (ESC) system as standard equipment. Effective August 2012 this law requires aftermarket products to be compliant with these same standards.



### BEFORE YOU DRIVE

Check all fasteners for proper torque. Check to ensure for adequate clearance between all rotating, mobile, fixed, and heated members. Verify clearance between exhaust and brake lines, fuel lines, fuel tank, floor boards and wiring harness. Check steering gear for clearance. Test and inspect brake system.

Perform steering sweep to ensure front brake hoses have adequate slack and do not contact any rotating, mobile or heated members. Inspect rear brake hoses at full extension for adequate slack. Failure to perform hose check/ replacement may result in component failure. Longer replacement hoses, if needed can be purchased from a local parts supplier.

Re-torque all fasteners after 500 miles. Always inspect fasteners and components during routine servicing.

Box Kit		
Part #	Qty	Description
03609	1	Center Axle Bracket
03610	1	Drv Tie Rod Bracket
03611	1	Pass Tie Rod Bracket
01571	1	Badge Mounting Plate
01572	1	BDS Badge
887	1	Rivet Bolt Pack
382340334RB	2	3/8" x 2-3/4" x 3-3/4" U-bolt
561580214RB	4	5/16" x 1-5/8" x 2-1/4" U-bolt

Bolt Packs		
Part #	Qty	Description
304	1	Bolt Pack
	8	1/4" USS Washer
	4	3/8" SAE Washer
	4	3/8" Prevailing torque nut
	8	5/16" Prevailing torque nut
322	1	Bolt Pack
	2	1/2" x 2-1/2" bolt
	2	1/2" Prevailing torque nut
	4	1/2" SAE Washer
337	1	Bolt Pack
	2	1/2" x 2-3/4" bolt
	2	1/2" Prevailing torque nut
	4	1/2" SAE Washer
351	1	Bolt Pack
	1	10mm-1.50 x 35mm bolt
	1	7/16" SAE Washer



## PRE-INSTALLATION NOTES

1. Special literature required: OE Service Manual for model/year of vehicle. Refer to manual for proper disassembly/reassembly procedures of OE and related components.
2. Secure and properly block vehicle prior to installation of BDS Suspension components. Always wear safety glasses when using power tools
3. 2" Front Bump stop extensions and OE pitman arm are required for this kit to be installed.
4. Rivet gun required for badge installation.
5. Thread locker is required on all bolts.

## INSTALLATION INSTRUCTIONS

6. Park the vehicle on a clean, level surface, block the rear wheels for safety and center the steering wheel.
7. Remove Stabilizer cylinder from the brackets. **(Fig. 1, 2)**

**FIGURE 1**

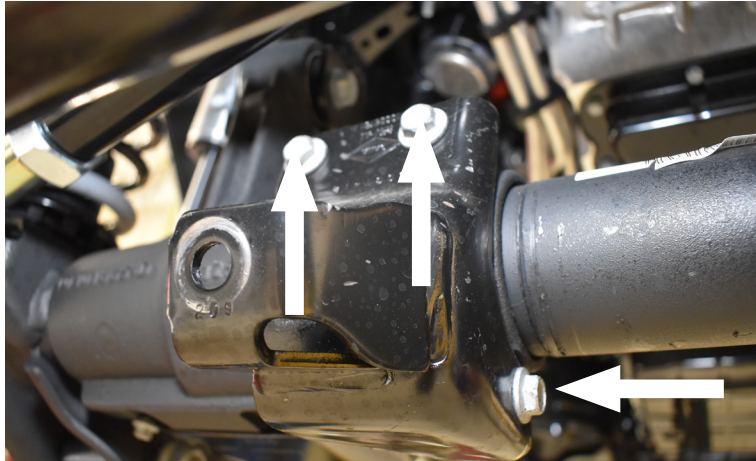


**FIGURE 2**



8. Remove axle bracket. (Fig. 3)

**FIGURE 3**



9. Install provided bracket to axle loosely with the side bolt and spacer. and the 10mm Bolt, 7/16" washer and .375" Sleeve. (Fig.4)  
Bolt Pack 304 & 351

**FIGURE 4**

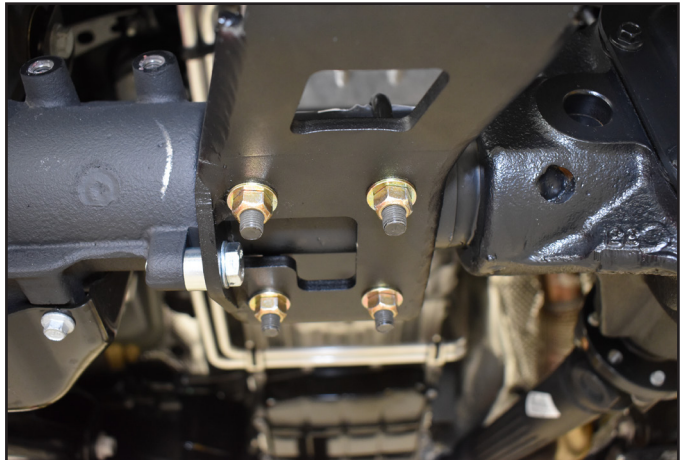


10. Loosely install the center bracket (03609) on the bottom of axle with the 3/8" U-Bolts, nuts, washers making to sure to snug each a little each time so as to end up with the same amount of thread on each. Snug enough to hold bracket in place, but not enough so that the bracket can't be moved slightly for leveling. (Fig. 5A, 5B)

**FIGURE 5A**



**FIGURE 5B**



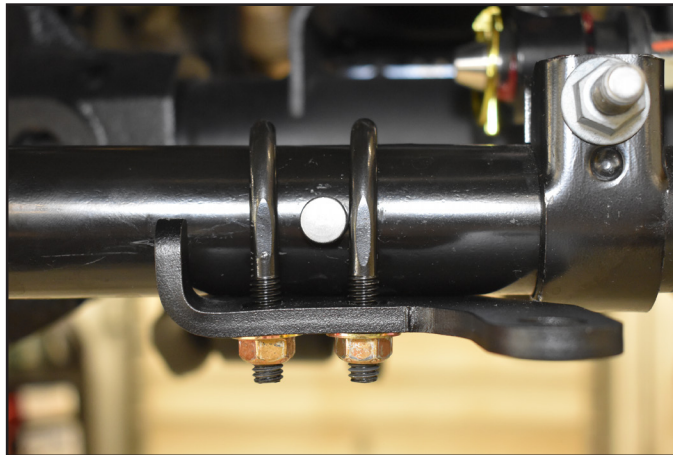
11. Align and level the bracket to the lower front drag link/Tie rod. Tighten to prevent movement but do not torque at this time. **(Fig. 6)**

**FIGURE 6**

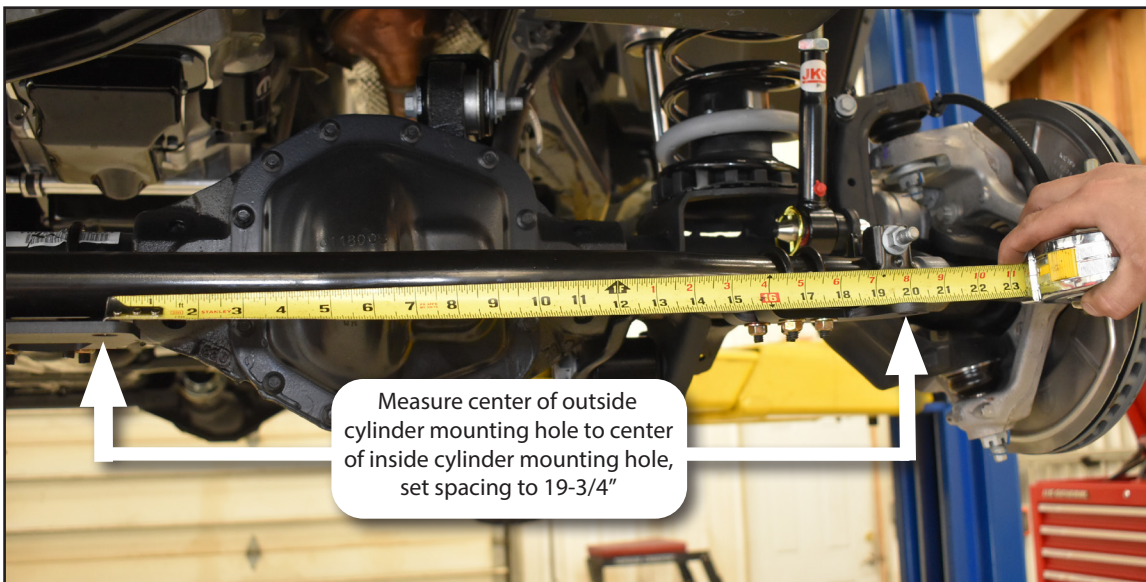


12. Install the driver side out side bracket loosely to the tie rod as shown with the provided 5/16" U-bolts, washers, and nuts so the stabilizer mounting hole offsets to the outside. Leave hardware loose. **(Fig. 7)** Measure from the right most hole on center to the center of the hole on the drivers side bracket. Measure and set spacing to 19-3/4" **(Fig. 8)** . Bolt Pack 304

**FIGURE 7**



**FIGURE 8**



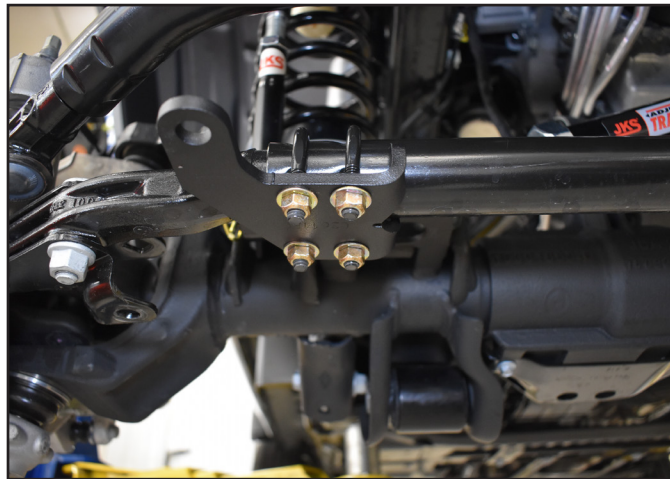
13. Tighten u-bolts making sure each has equal amounts of thread exposed. (Fig. 9)

**FIGURE 9**



14. Loosely attach the passenger side stabilizer bracket to bottom side of tie rod link similar to the driver side with the provided 5/16" U-bolts, washers, and nuts. (Fig. 10) Again measuring and setting the distance from center of the mounting holes to 19-3/4" Leave hardware loose. (Reference Figure 8). Bolt Pack 304

**FIGURE 10**



15. Lube and Press your bushings and the 1/2" ID sleeves into your cylinders. (Fig. 11A, 11B)

**FIGURE 11A**

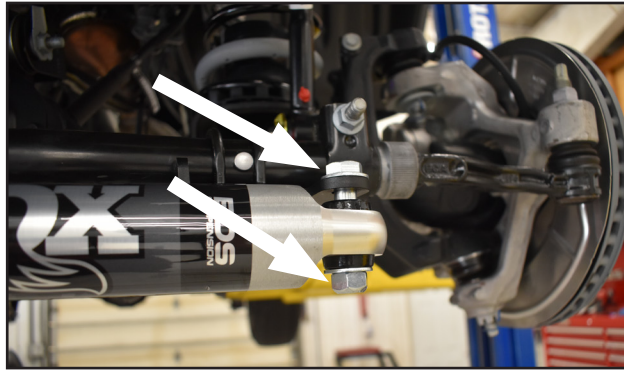


**FIGURE 11B**



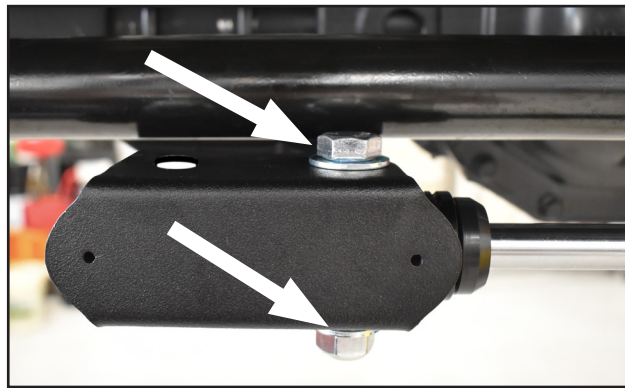
16. Loosely attach the rod end of the stabilizer cylinders to the bottom side of the center bracket with the badge mount plate using the 2-3/4" long 1/2" hardware from bolt pack 337. (Fig. 12)

**FIGURE 12**



17. Mount the rod end of the cylinder to center bracket mount using the 2-1/2" long 1/2" hardware from bolt pack 322. (Fig. 13)

**FIGURE 13**



*Failure to follow the proper installation location will result in damage to the steering stabilizers under full compression travel.*

18. Repeat cylinder installation on the passenger side.  
19. Adjust for level as needed. The stabilizer cylinders should be straight and level. (Fig. 14)

**FIGURE 14**



20. Adjust location until stabilizers are extended out equally and are in the desired position.

21. Torque hardware to following specifications:
  - 5/16" (**small**) U-bolts: 17 ft-lbs
  - 3/8" (**large**) U-bolts: 30 ft-lbs
  - 1/2" Bolts: 55 ft-lbs
  - 10mm Bolt: 30 ft-lbs
22. The badge can now be riveted on to the front plate using the provided 1/8" rivets. Any residue on the badge can be cleaned up using alcohol or brake cleaner before install. With the badge not installed it can be painted to what ever color you desire, or left raw as a stainless steel badge. (**Fig. 15**)

**FIGURE 15**



23. Perform a steering sweep to check for stabilizer clearance and to ensure full steering motion. Adjust tie rod brackets and center bracket as needed.
24. Recheck fasteners after 500 miles of driving and at regularly scheduled maintenance intervals.



## **WE WANT TO SEE YOUR RIDE!**

Grab photos of your BDS-equipped truck in action and send them in for a chance to be featured. Send it in to our Bad Ass Rides customer gallery at [bds-suspension.com/bar](http://bds-suspension.com/bar) and post them on the BDS Fan Page on Facebook at [facebook.com/BDSSuspensions](https://facebook.com/BDSSuspensions). Don't forget about your BDS swag! BDS offers t-shirts, hoodies, decals and more available on the BDS website or through your local BDS distributor.

---

## **TIME TO HAVE SOME FUN**

**Thank you for choosing BDS Suspension.**

For questions, technical support and warranty issues relating to this BDS Suspension product, please contact your distributor/installer before contacting BDS Suspension directly.