

Single Steering Stabilizer

Chevy / GMC 2500HD/3500HD | 2016-2026

Part #: 55383

Rev. 011226



491 W. Garfield Ave., Coldwater, MI 49036 • Phone: 517-279-2135

E-mail: tech-bds@ridefox.com

SAFETY WARNING

BDS Suspension Co. recommends this system be installed by a professional technician. In addition to these instructions, professional knowledge of disassembly/ reassembly procedures and post installation checks must be known.

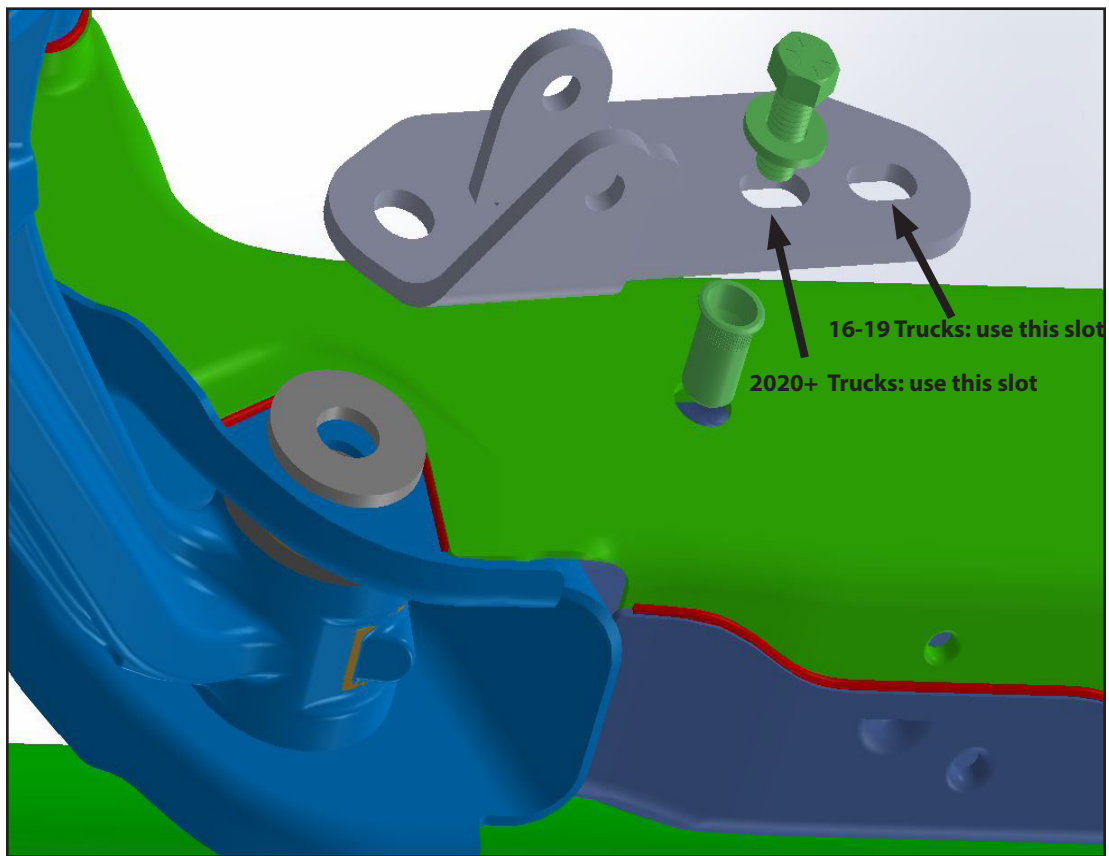
IMPORTANT: Before beginning installation, please make sure that the hole on the OE drag link is tapered on the passenger side.

INSTALLATION INSTRUCTIONS

1. Park vehicle on clean flat and level surface. Block the rear wheels for safety.
2. Remove factory front skid plate, if equipped.
3. The front control arm bolt on the Driver's side must be removed. Trucks with aftermarket lift kits that include drop brackets will still need to follow the remaining steps, but the bolt will support the front cross member. To safely remove the bolt, follow all steps listed below:
4. Raise front of vehicle and support frame rails with jack stands.
5. Unload the Driver's side torsion bar using appropriate tool. Remove the torsion bar key bridge to remove all load from the torsion bar. This is an important safety step.
6. Install the rivet nut into the factory hole in the frame (Figure 1). There is one extra rivet nut incase the installation is messed up. Follow directions at the end of the instruction sheet for how to install the rivet nut properly. If installation fails on first attempt, it is possible to tack weld the rivet nut in place to keep it from spinning (disconnect battery(s) if welding is performed).

BDS55383 Box Kit		
Part #	Qty	Description
03957	1	Stabilizer Bracket
W34SAE	1	Spacer Washer
95105A169	2	1/2" Rivet Nut
799	1	Rivet Nut Installation Bolt Pack
B12X114	1	1/2" x 1-1/4" Bolt
W12S	1	1/2" SAE Washer
340	1	Bolt Pack
	1	1/2"-20 Center Lock Nut
	2	1/2" SAE Washer
	1	12mm-1.75 x 70mm Bolt
	1	12mm-1.75 Prevailing Torque Nut

FIGURE 1



7. Remove the front lower control arm bolt.
8. Place the bracket with washer between the bracket and frame mounting point. Reattach with factory hardware. Wait until the vehicle is on the ground for final torque.
9. Attach bracket to the rivet nut in the frame with the provided 1/2" hardware. Tighten to 55 ft-lbs.
10. Install the narrow bushing into the body end of the stabilizer with sleeve. Install the wider bushing into the rod end of the stabilizer, no sleeve is required.
11. Attach body end of stabilizer to factory mount with 12mm x 70mm bolt, 1/2" washers, and 12mm prevailing torque nut from Bolt Pack 340. Leave hardware loose.
12. Attach stud pack to center link with the center lock nut from Bolt Pack #340 (included in the stabilizer box kit). Leave hardware loose.

Note: Do not use the castellated nut that comes in the stud pack.

FIGURE 2 - PASS SIDE STABILIZER MOUNT



13. Install the washer from the stud pack onto the stud, followed by the bushing, another washer, and locking nut provided in the stud pack. Leave hardware loose.
14. Tighten 12mm hardware and 1/2" stud center lock nut to 57 ft-lbs, 7/16" stud nut to 37 ft-lbs.
15. Reload torsion bars, and set to previous height.
16. Lower the front of the vehicle to the ground. Tighten lower control arm bolt to 180 ft-lbs.
17. Reinstall skid plate(s) if equipped.
18. Recheck after 500 miles.

TIME TO HAVE SOME FUN

Thank you for choosing BDS Suspension.

For questions, technical support and warranty issues relating to this BDS Suspension product, please contact your distributor/installer before contacting BDS Suspension directly.



WE WANT TO SEE YOUR RIDE!

Grab photos of your BDS-equipped truck in action and send them in for a chance to be featured. Send it in to our Bad Ass Rides customer gallery at bds-suspension.com/bar and post them on the BDS Fan Page on Facebook at facebook.com/BDSSuspensions. Don't forget about your BDS swag! BDS offers t-shirts, hoodies, decals and more available on the BDS website or through your local BDS distributor.

RIVET NUT INSTALLATION INSTRUCTIONS

RIVET NUT SIZING

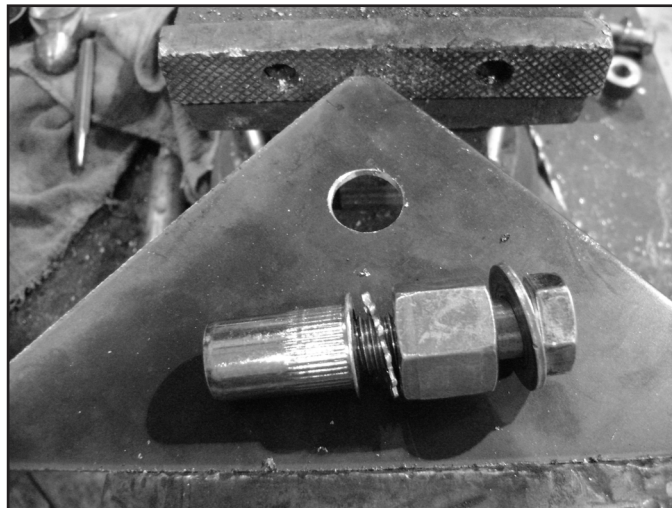
1. Verify the correct size rivet nut for the application based on the thickness of material where the rivet nut is to be installed using the following chart.

Part Number	Thread Size	Body Length (in)	Material Thickness (in)		Drill Size (in)
			Min.	Max.	
95105A169	1/2-13	1.150	.063	.200	11/16

RIVET NUT INSTALLATION TOOL ASSEMBLY

2. For a 1/2" rivet nut, place the provided 1/2" SAE washer on a 1/2" x 2" bolt followed by a 9/16" high nut and 1/2" serrated edge lock washer. Thread this tool assembly into the rivet nut as shown. **Figure 3**

FIGURE 3



RIVET NUT INSTALLATION

3. Place the installation tool with the rivet nut threaded on the end into the appropriately sized hole.



Tip

If available, an impact gun is recommended for tightening the bolt to ensure the rivet nut remains square to the hole and to ease holding the nut from spinning.

4. 1/2" rivet nut, hold the nut closest to the rivet nut still with an 7/8" wrench and tighten the 1/2" bolt with a 3/4" wrench to set the rivet nut. Be sure to hold the rivet nut flush to the surface and square to the hole as it is tightened. **Figure 4**

FIGURE 4 - 1/2" RIVET NUT INSTRUCTIONS



TORQUE SPECIFICATIONS

5. 1/2" rivet nuts will approach 90 ft lbs for maximum grip strength. Do not exceed 100 ft-lbs when setting the rivet nut.



Tip

If using the recommended impact gun, use caution to not exceed the recommended torque specifications.

RIVET NUT TOOL REMOVAL

6. Once the center bolt is tightened, remain holding the nut from spinning with the wrench and loosen the center bolt to remove the installation tool.



Caution **IMPORTANT** *It is very important to hold the nut as the bolt is loosened because the grip of the star washer will try to spin the rivet nut and ruin the installation.*

7. Verify proper installation by checking for consistent rivet nut deformation to see the threads are square and centered to the rivet nut. Figure 5.

FIGURE 5

