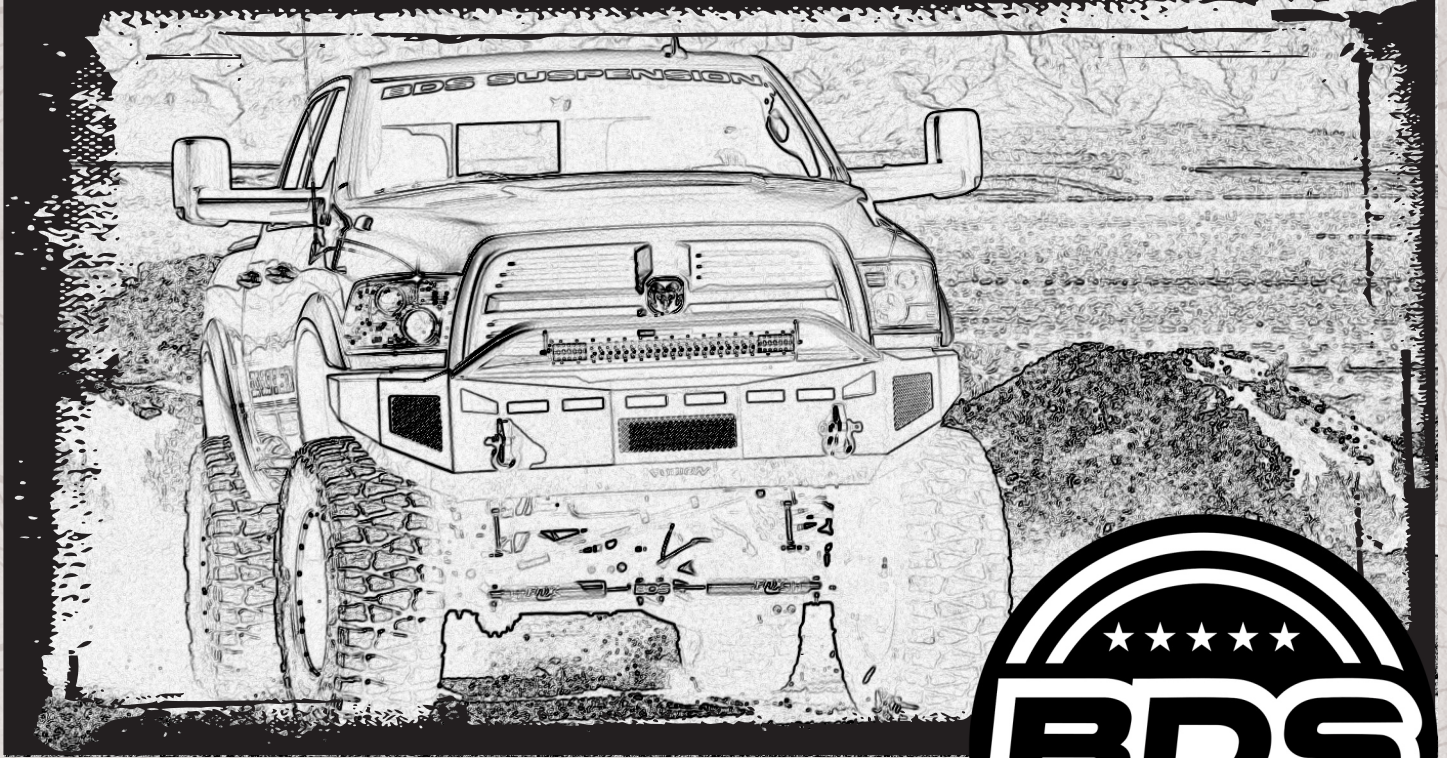


INSTALLATION GUIDE



Part#: 122414-122814



HARDCORE LIMITED LIFETIME WARRANTY

Sway Bar Link Kit / Disconnects

Dodge Ram 2500 Pickup 4WD | 2014-2026

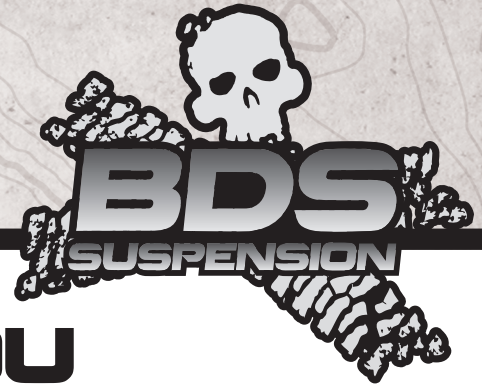
Dodge Ram 3500 Pickup 4WD | 2013-2024

Rev. 120525

491 W. Garfield Ave., Coldwater, MI 49036 • Phone: 517-279-2135

Web/live chat: www.bds-suspension.com • E-mail: tech-bds@ridefox.com

Read And Understand All Instructions And Warnings Prior To Installation Of System And Operation Of Vehicle.



THANK YOU

Your truck is about to be fitted with the best suspension system on the market today. That means you will be driving the baddest looking truck in the neighborhood, and you'll have the warranty to ensure that it stays that way for years to come. Thank you for choosing BDS Suspension!

BEFORE YOU START

BDS Suspension Co. recommends this system be installed by a professional technician. In addition to these instructions, professional knowledge of disassembly/ reassembly procedures and post installation checks must be known.

FOR YOUR SAFETY

Certain BDS Suspension products are intended to improve off-road performance. Modifying your vehicle for off-road use may result in the vehicle handling differently than a factory equipped vehicle. Extreme care must be used to prevent loss of control or vehicle rollover. Failure to drive your modified vehicle safely may result in serious injury or death. BDS Suspension Co. does not recommend the combined use of suspension lifts, body lifts, or other lifting devices. You should never operate your modified vehicle under the influence of alcohol or drugs. Always drive your modified vehicle at reduced speeds to ensure your ability to control your vehicle under all driving conditions. Always wear your seat belt.

BEFORE INSTALLATION

Special literature required: OE Service Manual for model/year of vehicle. Refer to manual for proper disassembly/reassembly procedures of OE and related components.

Adhere to recommendations when replacement fasteners, retainers and keepers are called out in the OE manual.

Larger rim and tire combinations may increase leverage on suspension, steering, and related components. When selecting combinations larger than OE, consider the additional stress you could be inducing on the OE and related components.

Post suspension system vehicles may experience drive line vibrations. Angles may require tuning, slider on shaft may require replacement, shafts may need to be lengthened or trued, and U-joints may need to be replaced.

Secure and properly block vehicle prior to installation of BDS Suspension components. Always wear safety glasses when using power tools.

If installation is to be performed without a hoist, BDS Suspension Co. recommends rear alterations first.

Due to payload options and initial ride height variances, the amount of lift is a base figure. Final ride height dimensions may vary in accordance to original vehicle attitude. Always measure the attitude prior to beginning installation.



Visit 560plus.com for more information.

SPECIAL TOOLS

Drill with 7/32" drill bit

BEFORE YOU DRIVE

Check all fasteners for proper torque. Check to ensure for adequate clearance between all rotating, mobile, fixed, and heated members. Verify clearance between exhaust and brake lines, fuel lines, fuel tank, floor boards and wiring harness. Check steering gear for clearance. Test and inspect brake system.

Perform steering sweep to ensure front brake hoses have adequate slack and do not contact any rotating, mobile or heated members. Inspect rear brake hoses at full extension for adequate slack. Failure to perform hose check/ replacement may result in component failure. Longer replacement hoses, if needed can be purchased from a local parts supplier.

Perform head light check and adjustment.

Re-torque all fasteners after 500 miles. Always inspect fasteners and components during routine servicing.

CONTENTS OF YOUR KIT

122414		
Part #	Qty	Description
911120	2	Sway Bar Links
M00475-BK-01	4	Spherical Ball
7608	4	Grease Zerk Push-in w/detent ball
03012	2	Clevis Bracket
03029	2	Sleeve - Upper
149	2	Sleeve - Lower
M03212-BK-01	2	Offset Spacer
677	1	Bolt Pack - Front Sway Bar Links
02785	2	Disconnect Stud
03005	2	Quick Pin
B96112G8	2	9/16"-18 x 1-1/2" bolt grade 8 yellow zinc
01316	2	Lanyard
B14X34G5	2	1/4"-20 x 3/4" self-tapping flange head bolt type 23 clear zinc
342701	1	Thread locker

122814		
Part #	Qty	Description
02785	2	Disconnect Stud
03005	2	Quick Pin
B96112G8	2	9/16"-18 x 1-1/2" bolt grade 8 yellow zinc
01316	2	Lanyard
B14X34G5	2	1/4"-20 x 3/4" self-tapping flange head bolt type 23 clear zinc
342701	1	Thread locker

INSTALLATION INSTRUCTIONS

PREINSTALLATION NOTES:

122414 comes with hardware, spacer, and sleeve to use at the lower sway bar link mount, the same as how BDS 8" kits are sold. The disconnect portion is also included, it is the users decision which kit to be installed. This kit can be used with BDS kits from 3"-8" of lift. If sway bar drop brackets are present, they must be removed and the sway bar put in the factory frame mounting position.

122814 is the disconnect portion only (straps, stud, pin, and hardware) for upgrading a BDS 8" kit to a disconnect system. This is to be used only with the sway bar links that come in the BDS 8" kit. Skip ahead to installation step #4.

SWAY BAR DISCONNECT INSTALLATION INSTRUCTIONS

1. Park vehicle on clean, flat, and level surface. Block the rear wheels for safety.
2. Disconnect the sway bar links from the sway bar and axle. They will not be reinstalled. (Fig. 1)

FIGURE 1



- Install new sway bar links. The clevis bracket will be a tight squeeze to get over the factory sway bar (keeps it from rotating). It may be necessary to slightly clear the widest part of the sway bar to get the bracket to fit over it. Attach with hardware as shown. (Fig 2a, 2b, 2c, & 2d)

FIGURE 2A

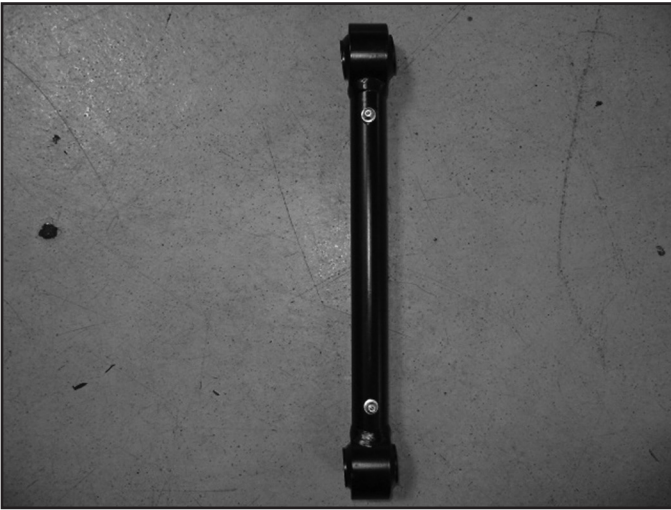


FIGURE 2B



FIGURE 2C

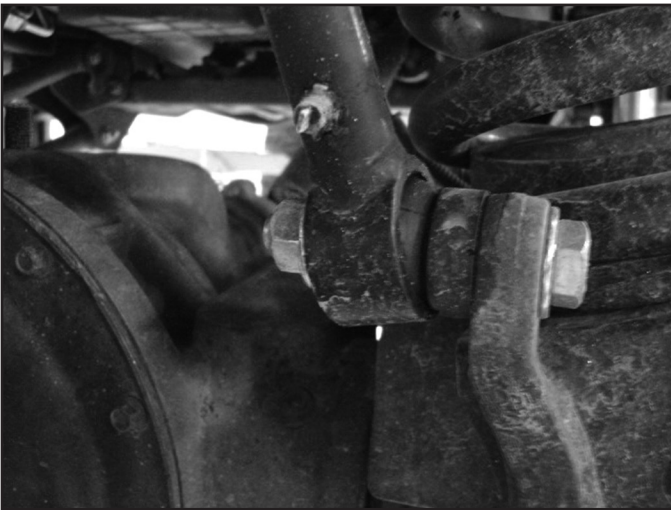
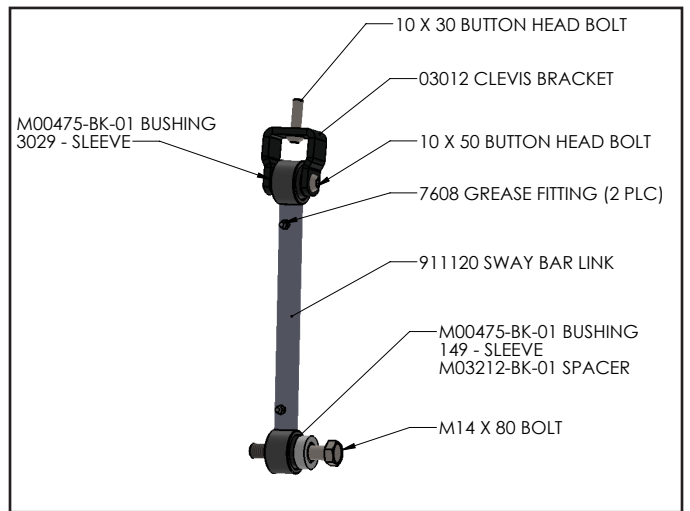


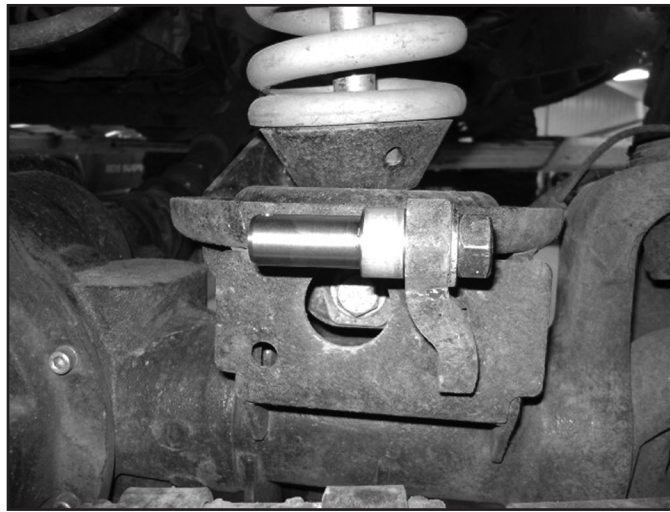
FIGURE 2D



OPTIONAL DISCONNECT STUDS (STEP #4 & #5) - 122414 & 122814 KIT:

- If installing optional sway bar disconnects, the lower 14mm bolt will need to be replaced with the disconnect stud. Install the lower stud with 9/16" x 1-1/2" fine thread bolt with washer to the axle mount with thread locker on the threads. The stud will face in towards the center of the vehicle. Use a small screw driver to keep the stud from rotating when tightening. Tighten to 95 ft-lbs. (Fig 3)

FIGURE 3



5. Swing the sway bar assembly up out of the way. Locate the retaining straps and find a place to attach on the frame rail to keep the sway bar and link assembly up when disconnected. Drill a hole to 7/32". Attach the retaining strap with 1/4" x 3/4" self threading bolt, tighten securely, do not over tighten. (Fig 4) Once the straps are set, reattach the sway bar links to the axle and retain with lynch pin. (Fig 5)

FIGURE 4

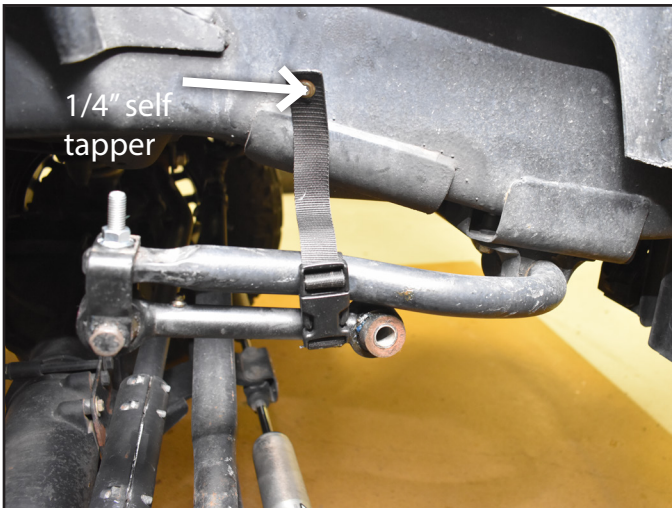


FIGURE 5



6. Tighten all hardware as follows: 10mm hardware to 40 ft-lbs, 9/16" or 14mm hardware to 95 ft-lbs. Lightly grease the sway bar links. Recheck after 500 miles. Grease fittings at regular service intervals.



WE WANT TO SEE YOUR RIDE!

Grab photos of your BDS-equipped truck in action and send them in for a chance to be featured. Send it in to our Bad Ass Rides customer gallery at bds-suspension.com/bar and post them on the BDS Fan Page on Facebook at facebook.com/BDSSuspensions. Don't forget about your BDS swag! BDS offers t-shirts, hoodies, decals and more available on the BDS website or through your local BDS distributor.

TIME TO HAVE SOME FUN

Thank you for choosing BDS Suspension.

For questions, technical support and warranty issues relating to this BDS Suspension product, please contact your distributor/installer before contacting BDS Suspension directly.