



FITTING INSTRUCTIONS

HARNESS PART NUMBER: **#SJBCABY**

HARNESS DESCRIPTION: **ARB SJB SOLIS Y CABLE
SUITS GEN2 TOUCHPAD ONLY SPLIT**

APPLICATION: **ARB WIRING LOOM SOLIS. #SJBHARN.**

FITTING TIME: **10 MINUTES + 60 MINUTES FOR #SJBHARN.**

This loom is designed to operate two Solis driving light pairs (4x lights) with one touchpad.

These instructions require two of the following looms, purchased separately:

- #SJBHARN ARB WIRING LOOM SOLIS.

NOTES:

- ◆ This loom must only be installed in conjunction with the ARB WIRING LOOM SOLIS part# SJBHARN.
- ◆ This product should be installed exactly as per these instructions.
- ◆ The installation of this product may require the use of specialised tools and/or techniques.
- ◆ It is recommended that this product is only installed by trained personnel.
- ◆ These instructions are correct at the date of publication. ARB Corporation Ltd. cannot be held responsible for the impact of any changes subsequently made by the vehicle manufacturer.
- ◆ During installation, it is the duty of the installer to check correct operation/clearances of all components.
- ◆ Ensure all electrical connections are correct and tight with good earth connection to the engine and/or chassis. Failure to do this may result in component failure or fire.
- ◆ Make sure all wires are securely fastened away from any hot, sharp or moving surfaces. Do not fasten any wires to the brake lines or fuel lines.
- ◆ Make sure that all electrical connections are strong and well insulated.
- ◆ Work safely at all times.

ARB 4x4 ACCESSORIES

Corporate Head Office

42-44 Garden St
Kilsyth, Victoria
AUSTRALIA, 3137

Tel: +61 (3) 9761 6622
Fax: +61 (3) 9761 6807

Australian enquiries
North & South American enquiries
Other international enquiries

sales@arb.com.au
sales@arbusa.com
exports@arb.com.au

www.arb.com.au



Do not pull on the
wiring harness
forcefully



Do not connect
wiring harness to
engine



Ensure all connections
are tight and pushed
home

FITTING PROCEDURE:

1. Remove the negative (-ve) cable from the vehicle battery.
2. Install two ARB WIRING LOOM SOLIS part #SJBHARN as per the instructions supplied with the looms. Please note the following modifications:
 - a) Do not connect the touchpad connector at this stage.
 - b) Only one connection with vehicle high beam light is required (Figure 1 ④). The second harness high beam light connector can be tied back and taped (Figure 1 ⑤).
 - c) Only one connection with vehicle clearance light is required (Figure 1 ⑥). The second harness clearance light wire can be tied back and taped (Figure 1 ③).
3. With the ARB SJB SOLIS Y CABLE part #SJBCABY, complete the following connections.
 - a) Connect Solis harness A with the #SJBCABY harness (Figure 1 ①).
 - b) Connect Solis harness B with the #SJBCABY harness (Figure 1 ②).
 - c) Connect #SJBCABY harness with touchpad harness (Figure 1 ③).

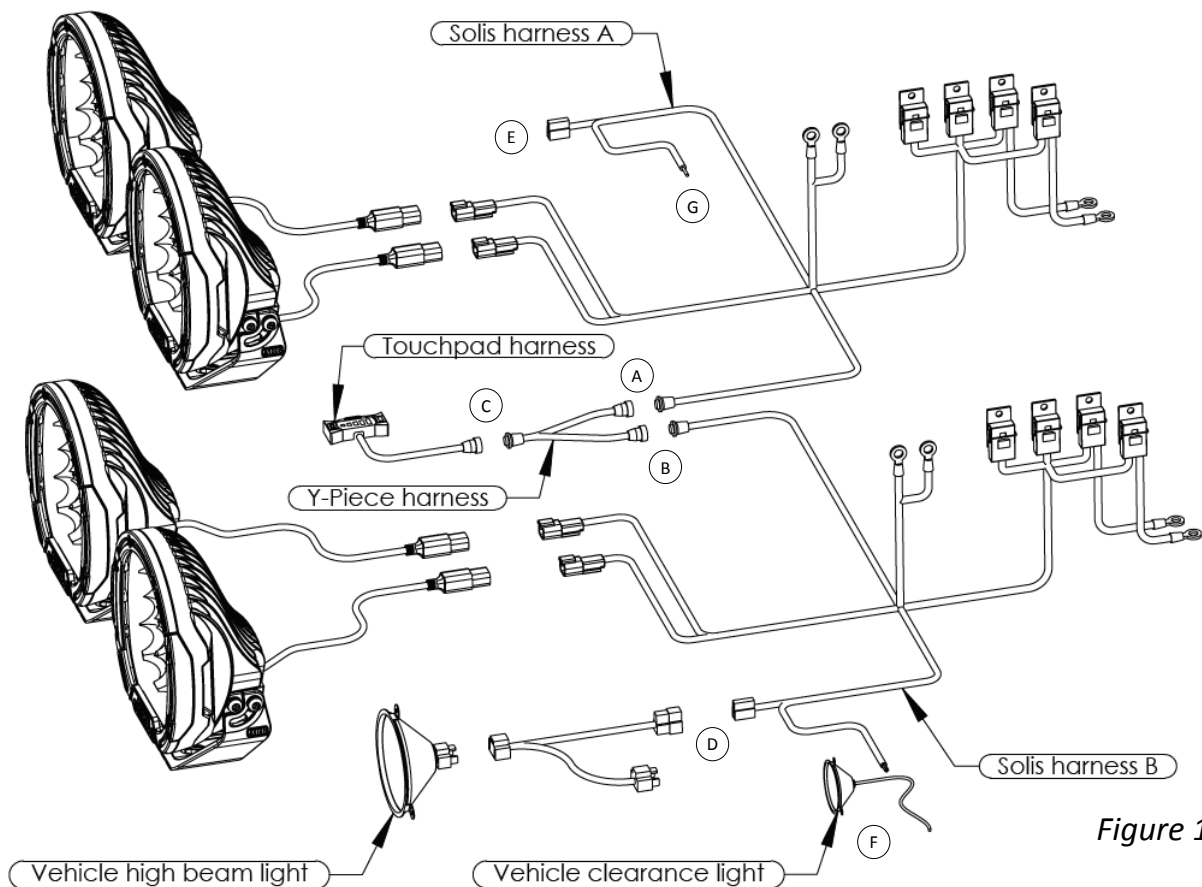


Figure 1

4. Ensure secure mounting of the touchpad. Secure all cables with cable ties and tape.
5. Reconnect the negative (-ve) cable to the battery.
6. Check operation of all four Solis driving lights with the touchpad. Check dim control and operation of touchpad with vehicle high beam and clearance light operation.