



# FITTING INSTRUCTIONS

Part Number: **5448110**

Product Description: UNDER VEHICLE PROTECTION

Suited to vehicle/s: ISUZU DMAX 2012 ON (AUTO TRANSMISSION ONLY)

ISUZU MU-X 2013 ON (AUTO TRANSMISSION ONLY)

**Please place these instructions in vehicle glove box when complete.**

## **WARNING**

### REGARDING VEHICLES EQUIPPED WITH SRS AIRBAG:

When installed in accordance with these instructions, the vehicle protection panels do not affect operation of the SRS airbag.

### ALSO, NOTE THE FOLLOWING:

- ◆ This product must be installed exactly as per these instructions using only the hardware supplied.
- ◆ Do not use this product for any vehicle make or model, other than those specified by ARB.
- ◆ Do not remove labels (if any) from this product.
- ◆ This product or its fixing must not be modified in any way.
- ◆ The installation of this product may require the use of specialized tools and/or techniques
- ◆ These instructions are correct as at the publication date. ARB Corporation Ltd. cannot be held responsible for the impact of any changes subsequently made by the vehicle manufacturer
- ◆ During installation, it is the duty of the installer to check correct operation/clearances of all components
- ◆ Work safely at all times
- ◆ Unless otherwise instructed, tighten fasteners to specified torque

## **ARB 4x4 ACCESSORIES**

Corporate Head Office

42-44 Garden St  
Kilsyth, Victoria  
AUSTRALIA 3137

Tel: +61 (3) 9761 6622  
Fax: +61 (3) 9761 6807

Australian enquiries  
North & South American enquiries  
Other international enquiries

sales@arb.com.au  
sales@arbusa.com  
exports@arb.com.au

**www.arb.com.au**

# IMPORTANT INFORMATION. GENERAL CARE AND MAINTENANCE

By choosing ARB vehicle protection, you have bought a product that is one of the most sought after 4WD products in the world. You're under vehicle protection panels are a properly engineered, reliable, quality accessory that represents excellent value.



- While these panels have been engineered for strength and functionality care and good judgment should be taken when traversing difficult off-road conditions to minimise damage to panels and vehicle.
- During servicing when panels are removed ensure fasteners are re-fitted to the correct torque values.
- Inspect panels visually on a regular basis. Dirt and foreign matter should be washed out to minimise build-up around hot components. **BE VERY CAREFUL** when removing foreign matter with hands while vehicle is hot or running. Replace any components as necessary. This service can be performed by your local authorized ARB Stockist.

## FITTING REQUIREMENTS

### REQUIRED TOOLS FOR FITMENT OF PRODUCT:

BASIC TOOL KIT	VEHICLE JACK OR STANDS
TORQUE WRENCH	

### HAVE AVAILABLE THESE SAFETY ITEMS WHEN FITTING PRODUCT:

Protective eyewear	
Hearing protection	

**NOTE:** 'WARNING' notes in the fitting procedure relate to OHS situations, where to avoid a potentially hazardous situation it is suggested that protective safety gear be worn or a safe work procedure be employed. If these notes and warnings are not heeded, injury may result.

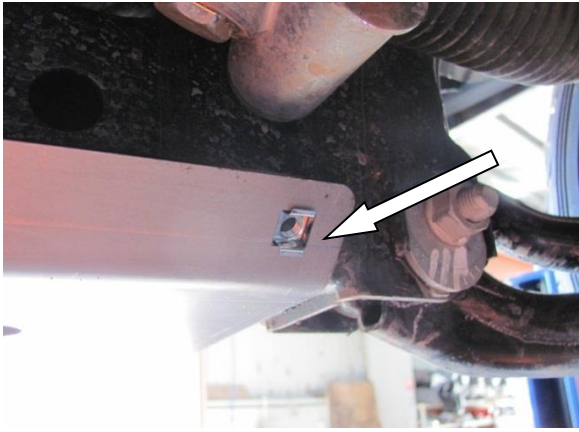
### FASTENER TORQUE SETTINGS:

SIZE	Torque Nm	Torque lbft
M6	9	7
M8	22	16
M10	44	32
M12	77	57

## PARTS LISTING

APPLICATION.	PART NO.	QTY.	DESCRIPTION.
FIT FRONT PANEL	6522187	1	FRONT UVP ASSEMBLY
	6151088	7	BOLT M10 X 35 X 1.25
	4581048	7	WASHER SPRING M10
	4581040	7	WASHER FLAT M10
	6151303	3	NUT CAGE M8
FIT SUMP PANEL MOUNTS TO CHASSIS	3758397	2	SUMP CHASSIS MOUNTS
FIT SUMP PANEL	6522189	1	SUMP UVP ASSEMBLY
	6151360	2	BOLT M12 X 1.75
	4581050	2	WASHER SPRING 1/2
	4581049	2	WASHER FLAT 1/2
	6151022	3	BOLT M8 X 25
	4581046	3	WASHER SPRING M8
	4581044	3	WASHER FLAT M8
	6151303	3	NUT CAGE M8
FIT TRANSMISSION MOUNT	3758400	1	TRANSMISSION MOUNT
FIT TRANSMISSION PANEL	6522191	1	TRANSMISSION UVP ASSEMBLY
	6151088	2	BOLT M10 X 35 X 1.25
	4581048	2	WASHER SPRING M10
	4581040	2	WASHER FLAT M10
	6151478	2	NUT FLANGE M10
	6151022	3	BOLT M8 X 25
	4581046	3	WASHER SPRING M8
	4581044	3	WASHER FLAT M8
FIT TRANSFER PANEL	6522193	1	TRANSFER CASE UVP
	6151021	4	BOLT M8 X 20
	4581046	4	WASHER SPRING M8
	4581044	4	WASHER FLAT M8

## FITTING PROCEDURE

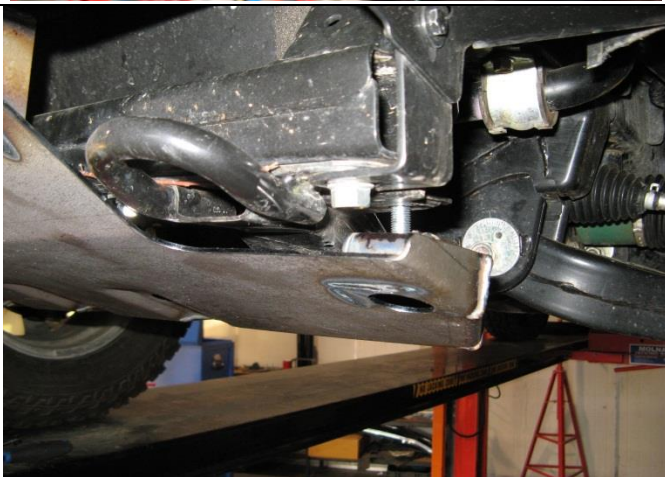


1. Remove original stone shields from vehicle. Insert 3 x M8 cage nuts to rear of supplied front panel as shown.

**NOTE: If vehicle is fitted with an ARB bullbar retain the three front bolts joining the O.E panel to bullbar stone shield.**



2. As shown in image remove original tow hook bolt and replace with M10 x 35 bolt, spring washer and flat washer. Leave positioned as shown. Repeat for opposite side.



3. Fit front panel as shown by hanging on bolts fitted in step 2. Tighten bolts up slightly to minimise gap but leave loose. Secure rear of front panel to chassis using 2 x M10 x 35 bolts, spring washers and flat washers. Secure front using 3 x M10 x 35 bolts, spring washers and flat washers. Leave fasteners finger tight.

**NOTE: If fitted with bullbar re-use fasteners for front of UVP that were removed in step 1.**



4. Support front suspension cross member using jack or similar. Remove outer two bolts and fit sump UVP brackets to rear face as shown. Do one side at a time. Leave bolts finger tight.

## FITTING PROCEDURE



5. Place 3 x M8 cage nuts in rear of sump UVP. Secure sump UVP to chassis brackets using 2 x M12 x 35 bolts, spring washers and flat washers leaving finger tight. Secure front of sump UVP to front UVP using 3 x M8 x 25 bolts, spring washers and flat washers leaving finger tight.



6. Remove nuts only from transmission cross member bolts and fit transmission UVP bracket to front surface. Re-fit nuts and torque.



**M10 44 Nm.**



7. Fit transmission UVP and secure to mount bracket using 2 x M10 x 35 bolts, spring washers, flat washers and M10 flange nuts placed on top of bracket. Leave finger tight. Secure to sump UVP using 3 x M8 x 25 bolts, spring washers and flat washers. At this stage tighten all chassis and UVP fasteners as shown by specs below.



**M8 22 Nm.**



**M10 44 Nm.**



**M12 77 Nm.**



8. Remove O.E panel from transfer case. Fit new guard making sure the return lip is facing the centre of the vehicle. Secure using 4 x M8 x 20 bolts, spring washers and flat washers. Tighten all bolts.



**M8 22 Nm.**

## FITTED PRODUCT

