



FITTING INSTRUCTIONS

Part Number: **4450260**

Product

Description: **ROCK SLIDERS**

Suited to

vehicle/s: **JEEP GLADIATOR**

WARNING

NOTE THE FOLLOWING:

- ◆ This product must be installed exactly as per these instructions using only the hardware supplied.
- ◆ In the event of damage to any Rock Slider component, contact your nearest authorised ARB stockist. Repairs or modifications to the impact absorption system must not be attempted.
- ◆ Do not use this product for any vehicle make or model, other than those specified by ARB.
- ◆ This product or its fixing must not be modified in any way.
- ◆ The installation of this product may require the use of specialized tools and/or techniques
- ◆ It is recommended that this product is only installed by trained personnel
- ◆ These instructions are correct as at the publication date. ARB Corporation Ltd. cannot be held responsible for the impact of any changes subsequently made by the vehicle manufacturer
- ◆ During installation, it is the duty of the installer to check correct operation/clearances of all components
- ◆ Work safely at all times
- ◆ Unless otherwise instructed, tighten fasteners to specified torque

ARB 4x4 ACCESSORIES

Corporate Head Office

42-44 Garden St
Kilsyth, Victoria
AUSTRALIA 3137

Tel: +61 (3) 9761 6622
Fax: +61 (3) 9761 6807

Australian enquiries
North & South American enquiries
Other international enquiries

sales@arb.com.au
sales@arb.com.au
exports@arb.com.au

www.arb.com.au

GENERAL CARE AND MAINTENANCE



By choosing an ARB Rock Slider, you have bought a product that is one of the most sought after 4WD products in the world. Your Rock Slider is a properly engineered, reliable, quality accessory that represents excellent value. To keep your Rock Slider in original condition it is important to care and maintain it following these recommendations:

- It is recommended that following exposure to salt, mud, sand or other contaminants exposed surfaces should be thoroughly cleaned with wash and wax type suds solution.
- As part of any Pre Trip Preparation, or on an annual basis, it is recommended that a thorough visual inspection of the step and rail and surrounding components is carried out, making sure that all bolts are torqued to the correct specification. Also check that nearby wiring and plumbing are free of damage. Replace any components as necessary. This service can be performed by your local authorized ARB Stockist.

REQUIRED TOOLS FOR FITMENT OF PRODUCT:

METRIC SOCKET SET	RUST PREVENTIVE PAINT
ELECTRIC DRILL Ø 13 MM CAPACITY	ALLEN KEY SET
Ø 6, 10 mm DRILL BITS	TORQUE WRENCH 9-77Nm
BLACK SILICONE	AXLE STANDS (OPTIONAL)
TORX KEY SET	PROTECTIVE FILM
NUTSERT TOOL TO SUIT M6	6mm TRANSFER PUNCH (OPTIONAL)
IMPACT WRENCH	TORCH

HAVE AVAILABLE THESE SAFETY ITEMS WHEN FITTING PRODUCT:

Protective eyewear		Hearing protection	
--------------------	---	--------------------	---

NOTE: 'WARNING' notes in the fitting procedure relate to OHS situations, where to avoid a potentially hazardous situation it is suggested that protective safety gear be worn or a safe work procedure be employed. If these notes and warnings are not heeded, injury may result.

FASTENER TORQUE SETTINGS:

SIZE	Torque Nm	Torque lbft
M6	9Nm	7lbft
M8	22Nm	16lbft
M14	115Nm	85lbft

PARTS LISTING			
APPLICATION.	PART NO.	QTY	DESCRIPTION
FITTING KIT BOXED	3193849R	1	BODY MOUNT R/H
	3193849L	1	BODY MOUNT L/H
	4654746R	1	WELD ASM ROCK RAIL R/H
	4654746L	1	WELD ASM ROCK RAIL L/H
FITTING KIT BAGGED	4581011	4	WASHER PACKER
	6151278	36	NUTSERT, M6
	6151303	22	NUT CAGED M8 1.8-3.2
	6151711	36	SCREW BTN HD TX M6 x 25 BZ
	6151911	22	SCREW-M8X20 CSK TORX GR 8.8 ZNB480

FITTING PROCEDURE

IMPORTANT NOTE: These instructions apply to JL JEEP.



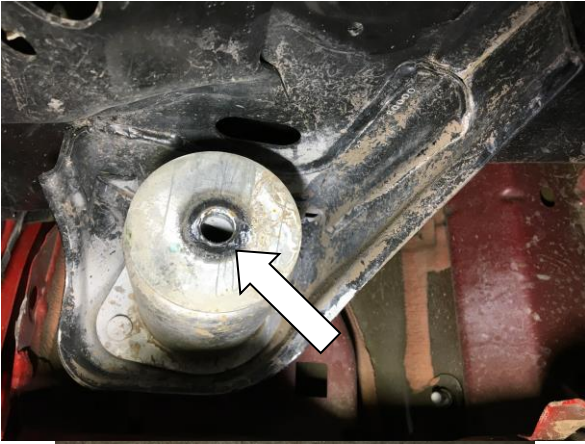
1. If fitted, remove the factory side steps retaining all fasteners.



2. Remove the body mounting bolts in the front and back along the chassis.

Use extreme care when removing these. There is thread locker from the factory and heat and/or an impact is needed to remove them. They will shear if care is not taken.





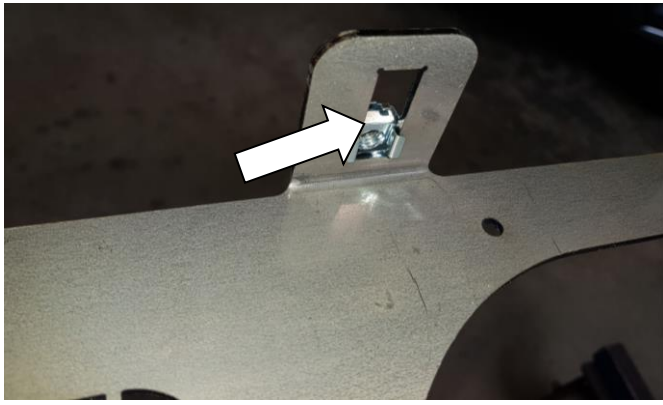
3. The rear mount is shown here, **heat and an impact wrench are needed** to remove this bolt. Take care to not melt the bushing, you will need to heat it off and on until it comes loose since it is extra-long. (bolt removed)



4. Protect the paint work on doors and sills both sides of vehicle. Use low tack film or similar material. (Four-door JL shown)



5. Clip M8 cage nuts into all slots on the R/H mount plate. Ensure they can slide freely.



6. Repeat on L/H side mount plate.



7. Fit the mount plate to the step. Start all the M8 countersunk screws



8. When tightening the countersunk screws, hold the mounting plate up against the edge of step to achieve minimum gap and tighten.



9. The edge of the step section is not straight and should have a curve when secured. (L/H side Shown)

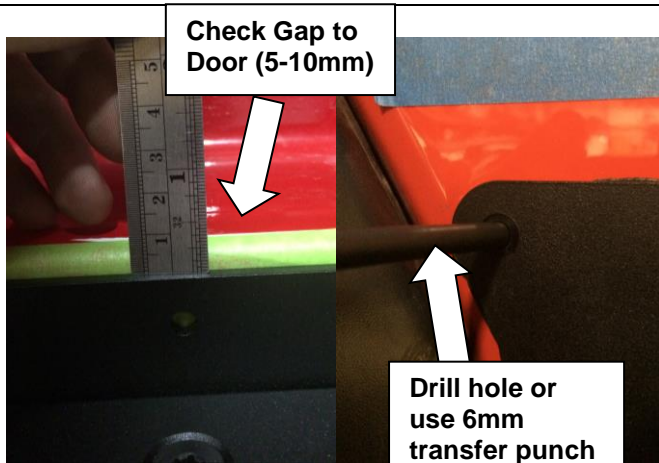


10. With either a lift table or 2 helpers, lift the assembly to the side of the car as shown. Look to make the gap along the doors even.



11. Fit the front mount bolt with 2 packers to secure the step while supporting the rear.
12. Insert the rear mount bolt to start setup. Add or subtract packers in the front and rear to level gap along bottom of the door openings.

Once level is set, correct the gap fore and aft until all gaps are even.



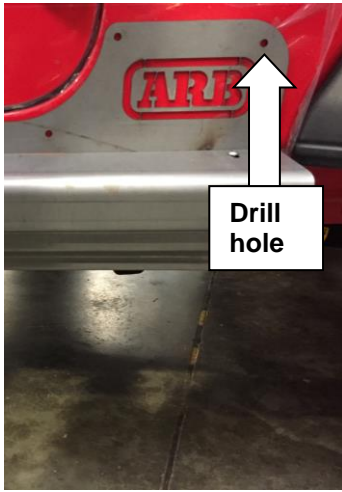
Check Gap to Door (5-10mm)

Drill hole or use 6mm transfer punch

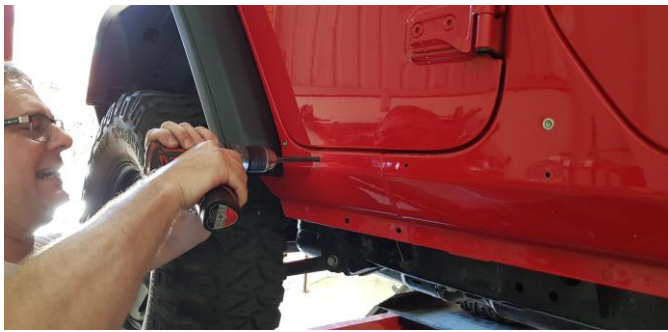
13. With the step secured against the car and the gap even use a $\text{Ø}6\text{mm}$ transfer punch to mark where to drill the hole. Carefully drill $\text{Ø}6\text{mm}$ hole to minimum depth at the rear of the panel as pilot for the nutsert drilling position.



Warning: Drilling operations can result in flying metal debris, safety glasses should be worn.



14. Drill the front hole then remove the step.



15. Drill out two pilot holes to $\text{Ø}10\text{mm}$ to suit the M6 nutserts. (Four door shown)
16. Treat $\text{Ø}10\text{mm}$ holes with rust preventive paint.



17. Apply silicone to rivnut.
18. Use a suitable tool to install the 2 nutserts then attach the mount plate with M6 x 25 button head screws to use as a template.



19. Use a 6mm transfer punch to mark the remaining holes, then drill using a Ø6mm bit.

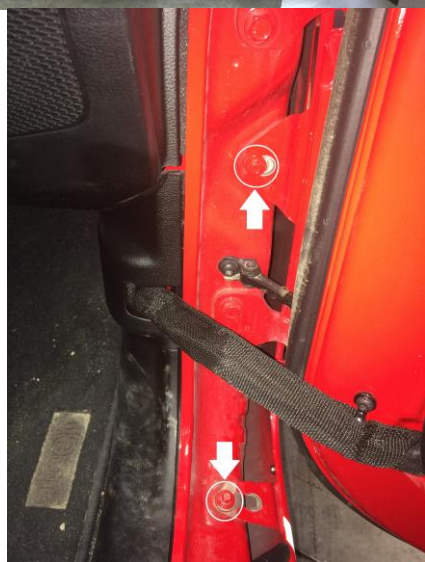
(remove mount plate)

Drill the guide holes out to Ø10mm and finish installing nutserts. For front hole directly below door hinge, see step 20.

Treat all holes with rust-preventative paint and all nutserts with silicone.



20. In order to install nutsert in the hole directly under the door hinge, the fender must first be loosened. Loosen four bolts shown in pictures before inserting nutsert.





21. Tighten bolts on fender.




22. Run a bead of silicon sealant around the body mount plate inside surface as a seal against weather.





23. Refit the mount plate to the side of vehicle with M6 x 25 button head screws.

24. Install the M8 countersunk screws.

25. Tighten all fasteners to specified torque.

 M6 - 9Nm

 M8 - 22 Nm.

 M14 - 115 Nm

FITTED PRODUCT

