



FITTING INSTRUCTIONS

Part Number: **3970030**

Product: **SAHARA SUMMIT BULL BAR**

Suited to vehicle/s: **AMAROK 2017 ON FLARED**

Optional Kits:

- 3500590** Fog Light Kit (LH&RH Lights)
- 3500640** ARB AUX Fog Light Adaptor
- 3500530** AUX Fog Light Loom (non-factory fog lamp vehicles)
- 3500680** Fog Lamp Housing Clear Lens Kit
- 3570020** Parking Sensor Kit 16 On
- 3500720** Winch Install Kit Alloy

WARNING

REGARDING VEHICLES EQUIPPED WITH SRS AIRBAG:

When installed in accordance with these instructions, the front protection bar does not affect operation of the SRS airbag.

ALSO, NOTE THE FOLLOWING:

- This product must be installed exactly as per these instructions using only the hardware supplied.
- In the event of damage to any bull bar component, contact your nearest authorised ARB stockist. Repairs or modifications to the impact absorption system must not be attempted.
- Do not use this product for any vehicle make or model, other than those specified by ARB.
- Do not remove labels from this bull bar.
- This product or its fixing must not be modified in any way.
- The installation of this product may require the use of specialized tools and/or techniques
- It is recommended that this product is only installed by trained personnel
- These instructions are correct as at the publication date. ARB Corporation Ltd. cannot be held responsible for the impact of any changes subsequently made by the vehicle manufacturer
- During installation, it is the duty of the installer to check correct operation/clearances of all components
- Work safely at all times
- Unless otherwise instructed, tighten fasteners to specified torque

ARB 4x4 ACCESSORIES

Corporate Head Office

42-44 Garden St
Kilsyth, Victoria
AUSTRALIA 3137

Tel: +61 (3) 9761 6622
Fax: +61 (3) 9761 6807

Australian enquiries
North & South American enquiries
Other international enquiries

sales@arb.com.au
sales@arbusa.com
exports@arb.com.au

www.arb.com.au

GENERAL CARE AND MAINTENANCE

By choosing an ARB Bar, you have bought a product that is one of the most sought after 4WD products in the world. Your bar is a properly engineered, reliable, quality accessory that represents excellent value. To keep your bar in original condition it is important to care and maintain it following these recommendations:



- Prior to exposure to the weather your bar should be treated to a Carnauba based polish on all exposed surfaces. It is recommended that this is performed on a six monthly basis or following exposure to salt, mud, sand or other contaminants.
- As part of any Pre Trip Preparation, or on an annual basis, it is recommended that a thorough visual inspection of the bar is carried out, making sure that all bolts and other components are torqued to the correct specification. Also check that all wiring sheaths, connectors, and fittings are free of damage. Replace any components as necessary. This service can be performed by your local authorized ARB Stockist.

FITTING REQUIREMENTS

REQUIRED TOOLS FOR FITMENT OF PRODUCT:

| | |
|---|--|
| Metric socket and spanner sets 8-25mm range | External Circlip pliers |
| Screwdrivers, Philips and Flat blade | Multitool or Jigsaw with blade for plastic cutting |
| Short Body Power Drill | Metric drill set up to 10mm |
| Torque Wrench (9-102Nm) | Ø10mm Long Series Drill (for pinning holes) |
| Half round file | Marking pen |
| Metric hex & torx key set | Soft Hammer |
| Wide masking tape | Loctite© 262 or equiv. |
| Small Spirit Level | Stanley knife and scissors |
| Right-angled Drill | Tape Measure & 2 x 300mm rulers |
| Angle grinder with cutting disc | Paint black fast drying |
| Insulation tape - Black | Low tack film |
| Side cutters | |

HAVE AVAILABLE THESE SAFETY ITEMS WHEN FITTING PRODUCT:

| | |
|--|--|
| Protective eyewear  | Hearing protection  |
|--|--|

NOTE: 'WARNING' notes in the fitting procedure relate to OHS situations, where to avoid a potentially hazardous situation it is suggested that protective safety gear be worn or a safe work procedure be employed. If these notes and warnings are not heeded, injury may result.

FASTENER TORQUE SETTINGS:

| SIZE | Torque Nm | Torque lbft |
|------|-----------|-------------|
| M6 | 9Nm | 7lbft |
| M8 | 22Nm | 16lbft |
| M10 | 44Nm | 32lbft |
| M12 | 77Nm | 57lbft |

| PARTS LISTING | | | |
|---|---|---|---|
| APPLICATION. | PART NO. | QTY | DESCRIPTION |
| BULL BAR WELDED ASSEMBLY MAIN | 4654339 | 1 | WELD ASSEMBLY MAIN BB ALLOY AMAROK |
| FIT MOUNT BRACKETS TO CHASSIS | 4654638R 4654638L 6151360 6151357 6151684 4581050 4581007 4581047 4581307 6151428 6151321 6151132 3194199 3199944 6151302 6151301 4681367 | 1 1 4 7 3 4 4 3 3 4 4 2 6 4 3 1 2 | BRKT MNT ASSY RH SAHARA AMAROK BRKT MNT ASSY LH SAHARA AMAROK BOLT HEX M12x1.75x35 PC8.8 ZP BOLT SEMS M10x30 PC8.8 ZP BOLT HEX M8x1.25x30 PC8.8 BTZP480 WASHER SPRING 1/2" ZP WASHER FLAT 1/2" ZP WASHER SPRING M8 BLACK ZP WASHER FLAT M8 BLACK NUT FLANGED M12 ZP NUT FLANGED M10 ZP NUT FLANGED M8x1.25 ZP PACKER 2mm NUTPLATE CAGE 325mm NUT CAGED M10 NUT CAGED M8 BRACE MOUNT CHASSIS |
| FIT BAR TO MOUNT BRACKETS | 6151360 6151357 4581050 4581007 6151428 6151321 | 6 4 6 6 6 4 | BOLT HEX M12x1.75x35 PC8.8 ZP BOLT SEMS M10x30 PC8.8 ZP WASHER SPRING 1/2" ZP WASHER FLAT 1/2" ZP NUT FLANGED M12 ZP NUT FLANGED M10 ZP |
| FIT BRACKET LINKS | 3750079R 3750079L 6151357 6151321 | 1 1 6 6 | BRKT LINK RH SUMMIT AMAROK BRKT LINK LH SUMMIT AMAROK BOLT SEMS M10x30 PC8.8 ZP NUT FLANGED M10 ZP |
| FIT LICENCE PLATE TO BAR | 3759488 6151384 6821189 6151213 4581287 4581082 6151128 | 1 2 2 3 3 3 3 | BRACKET LIC PLATE SUMMIT SCREW 10G x 5/8 SELF TAPPING GROMMET RND FC BOLT M6x1.0x20 BLACK WASHER SPRING M6 BLACK WASHER FLAT M6 BLACK NUT FLANGE M6 ZP |
| FIT WING BRACE | 4681645R 4681645L 6151357 6151321 | 1 1 8 8 | BRACE WING RH BRACE WING LH BOLT SEMS M10x30 PC8.8 ZP NUT FLANGED M10 ZP |
| FIT LIGHTS & MOULDINGS | 5100270 5100200 3163119 3163082 6821287 6821116 3500880 | 1 1 4 1 1 4 1 | BUFF KIT 2 PCE REAR NRW SAHARA BUFF KIT 2 PCE FRONT SECTION CAP COVERSTRAP INTERSECTION KIT SURROUND ARB FOGLIGHT LAMP LED INDICATOR CLEARANCE GROMMET NYLON SNAP IN TYPE GRILLE SPLIT PAN KIT |
| FIT WINCH ACCESS PANEL (NOT FITTING WINCH) | 6523172 6151213 4581287 4584295 6151128 | 1 3 3 3 3 | COVER WINCH PRESSED AMAROK AL BOLT M6x1.0x20 BLACK WASHER SPRING M6 BLACK WASHER FLAT M6 BLACK NUT FLANGE M6 ZP |

| | | | |
|---|----------|--------------------------|----------------------------------|
| FIT UNDER PANELS | 6523211 | 1 | STONE GUARD SUMMIT AMAROK '17 |
| | 6523212R | 1 | PANEL WING RH SUMMIT AMAROK '17 |
| | 6523212L | 1 | PANEL WING LH SUMMIT AMAROK '17 |
| | 3750270 | 2 | BRACKET WING SUPPORT '17ON |
| | 3194202 | 1 | PLATE CAGE NUT AMAROK |
| | 6151301 | 2 | NUT CAGED M8 |
| | 6151684 | 6 | BOLT M8x1.25x30 BLACK |
| | 4581307 | 6 | WASHER FLAT M8 BLACK |
| | 4581047 | 6 | WASHER SPRING M8 BLACK |
| | 6151213 | 16 | BOLT M6x1.0x20 BLACK |
| | 4581082 | 16 | WASHER FLAT M6 |
| | 4581287 | 16 | WASHER SPRING M6 |
| | 6151300 | 16 | NUT CAGED M6 |
| | 6151132 | 2 | NUT FLANGED M8x1.25 ZP |
| FIT BUMPER SUPPORT BRACKET | 3750148 | 1 | BRACKET SENSOR SUPPORT |
| | 6151213 | 6 | BOLT M6x1.0x20 BLACK |
| | 4581287 | 6 | WASHER SPRING M6 BLACK |
| | 4581082 | 6 | WASHER FLAT M6 BLACK |
| | 6151128 | 2 | NUT FLANGE M6 ZP |
| MISCELLANEOUS | 3876354 | 1 | TEMPLATE BUMPER CUT 3470040 |
| | 6191037 | 1 | PINCH WELD 1000mm |
| | 180302 | 10 | CABLE TIE 4.8 x 180mm BLACK |
| | 6151534 | 2 | SCREW PLASTITE 45 # 10x16mm |
| | 665044 | 1 | 3M PRIMER STICK |
| | 6781427 | 8 | ADHESIVE STRIP BUTYL 20mm X 25mm |
| | 6821242 | 4 | CABLE TIE HOLDER 19mm X 19mm |
| 3163091 | 4 | PLUG BLANKING BLK 17.4mm | |
| PARKING SENSOR KIT 16ON PART # 3570020 | 665044 | 1 | 3M PRIMER 94 (AMPOULE)0.66ML |
| | 6672001 | 8 | TAPE, 3M VHB 10X50X2.3 (THICK) |
| | 6781427 | 4 | TAPE, BUTYL 20X25 (THIN) |
| | 3759843 | 4 | BRACKET PARK SENSORS |

REMOVAL OF BUMPER



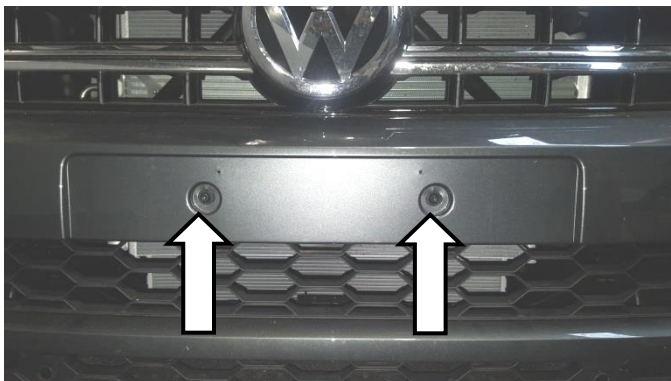
1. Remove number plate and set aside for re-use later.



2. Undo screws inside wheel arch and set aside for re-use later.
Note: Hidden screws are located towards the top of the wheel arch.



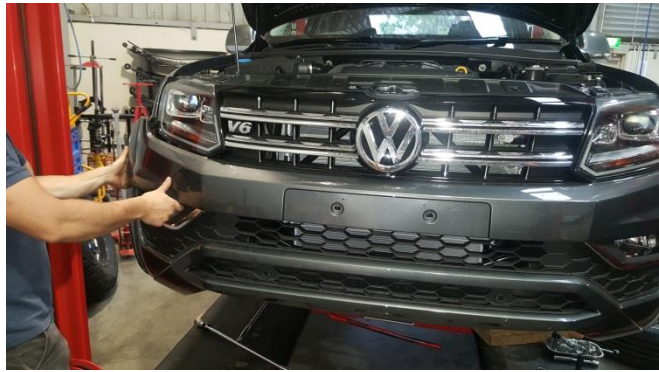
3. Undo screws located at bottom end of bumper and dispose.



4. Undo screws behind number plate and dispose.



5. Undo screws located at top of grille and set aside for re-use later.



6. Remove bumper carefully.
Note: disconnect wiring plugs relating to fog lights and parking sensors.



FOR PRE MY16 FACELIFT MODELS:
(FOR MY17 ON MOVE TO STEP 11)

7. Carefully cut cable ties holding the parking sensor loom to the bumper and remove loom and sensors.

Note: Take note of orientation of brackets and sensors as these will be reused in the bar and will have to orientate the same way.



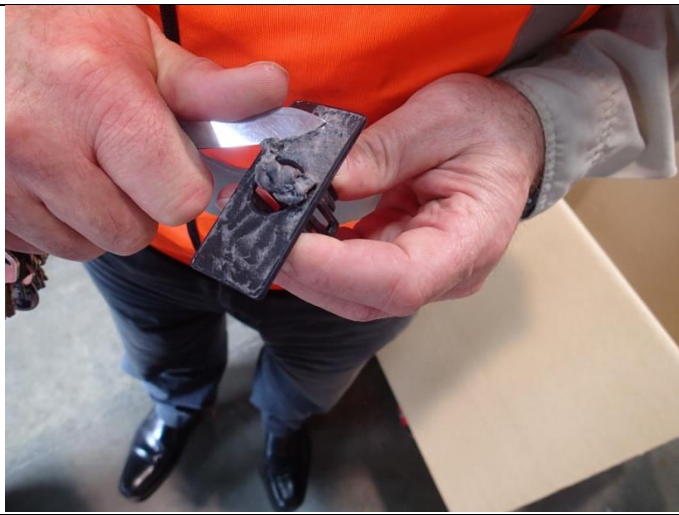
PRE MY16 FACELIFT MODELS:

8. Using a paint scraper or something similar carefully remove parking sensor mount bracket from bumper making sure not to damage the bracket in the process.

Note:

If Bull bar assembly is being fitted to MY16 Vehicle refer to Fitting Instruction # 3789638 inside fitting kit P/N # 3570020

Warning: Take care if using a sharp instrument for removal of bracket from bumper.



PRE MY16 FACELIFT MODELS:

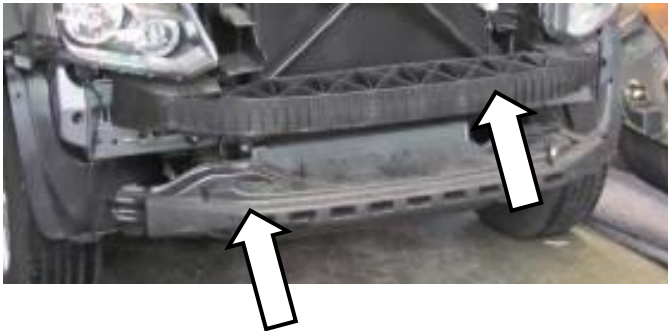
9. Remove all residue from the front face of the sensor mount bracket.

Warning: Take care if using a sharp instrument for removal of adhesive residue from bracket.



MY16 FACELIFT MODELS ONWARDS:

10. Carefully cut cable ties holding the parking sensor loom to the bumper and remove loom and sensors (unplug individual sensors first) and set aside for re-use later.

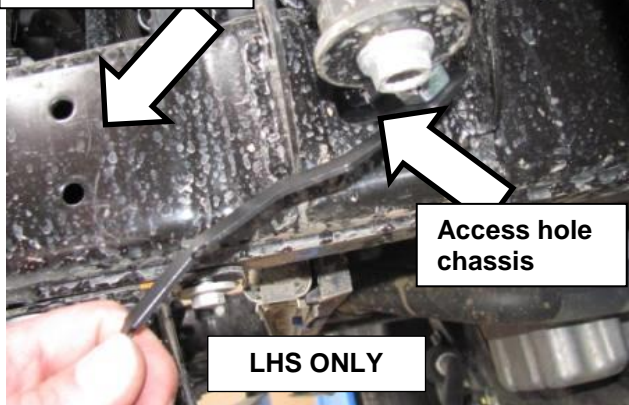


11. Remove bumper reinforcing plastic and foam pad and discard.



12. Remove screws located on crash beam.

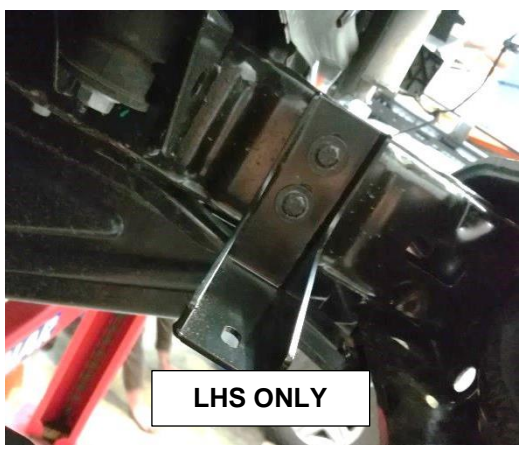
Align nut plate with these holes



Access hole chassis

LHS ONLY

13. Fit 2x M8 cage nuts to the supplied captive nut plate as shown below, then pass the cage nut assembly through the access hole in the chassis. **LHS ONLY**




LHS ONLY

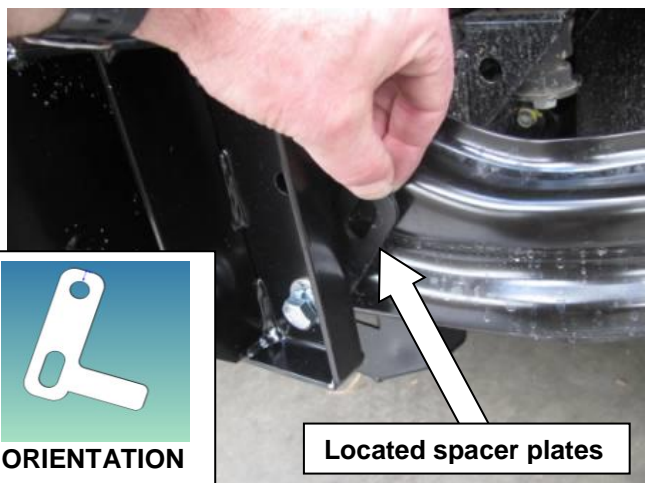
14. Loosely fit wing support bracket using M8 fasteners to side of chassis ensuring bracket slots are roughly mid-way along bolts. **LHS ONLY**



RHS ONLY

15. On the RHS there are existing bolts which hold the factory sump guard in place loosen the bolts and place the stone tray bracket behind the factory bracket then tighten both sides of the stone tray bracket to the specified torque.

 **M8-22Nm**

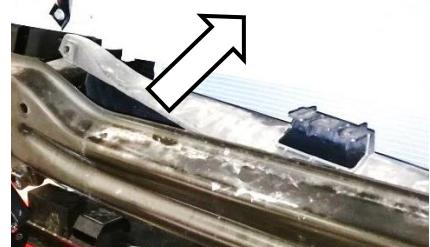


Located spacer plates

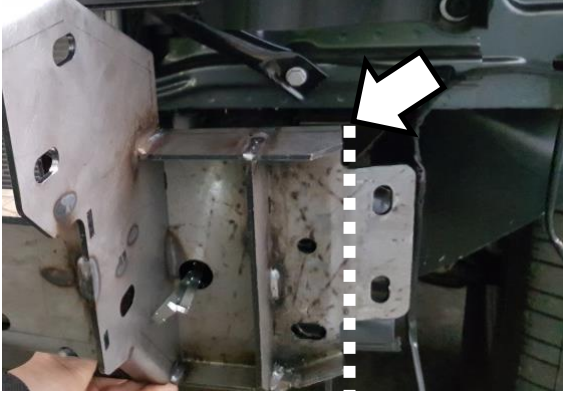
LH SHOWN, RH OPPOSITE

16. Fasten the bull bar mounts onto the crash beam using 4x M12 bolts, 4x M12 spring washers, 4x M12 flat washers and 4x M12 flange nuts placing one spacer on the inner side of the mount and two spacers on the outer mounting holes between crash beam and mounts. Nip up but do not tighten fully.

Note: Carefully move diffuser aside to get easy access during fastening then place back



NOTE: CUT CRASH BEAM ONLY, DO NOT CUT MOUNT

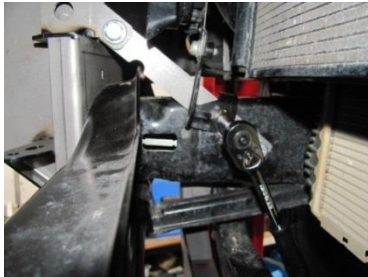


17. Mark vertical line onto crash beam using edge of chassis mount bracket as guide.
18. Using an angle grinder fitted with a cutting disc, carefully cut along line marked and dispose of cut off pieces.
19. Touch up cut edges with black spray paint
20. Repeat for opposite side.
- 21.



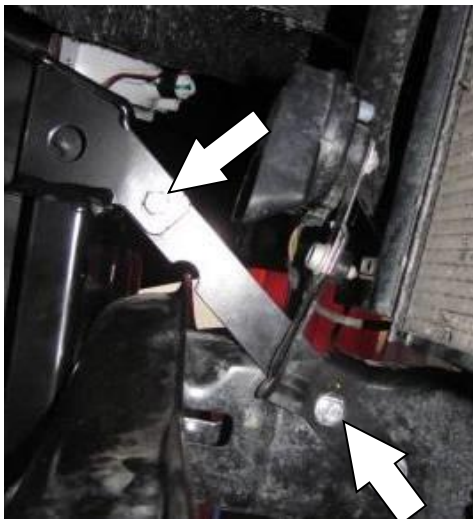
WARNING: Drilling & Cutting operations can result in flying debris. Eye and ear safety protection should be worn.

ON BASE MODEL LHS FACTORY HORN CAPTIVE NUT MISSING



22. Remove bolt retaining the VW horn bracket and place bull bar mount strap brace behind the bracket and loosely secure using existing hardware.

***Note:** On 2017 On model vehicles there is no LHS horn and no factory captive nut on neither LH or RH side. Therefore using two supplied captive nut plates fit an M10 cage nut to one and an M8 cage nut to the other. Using the access hole in the bull bar mounts on each side at the front of the chassis rail, locate the cage nut behind the hole (M10 for LHS & M8 for RHS) and fix using M10 SEMS bolt and M8x1.25x25 bolt, washer and spring washer.*

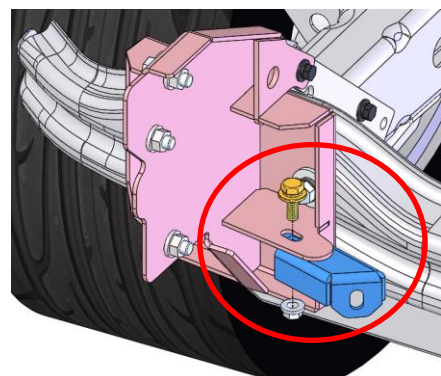


RH SHOWN, LH OPPOSITE

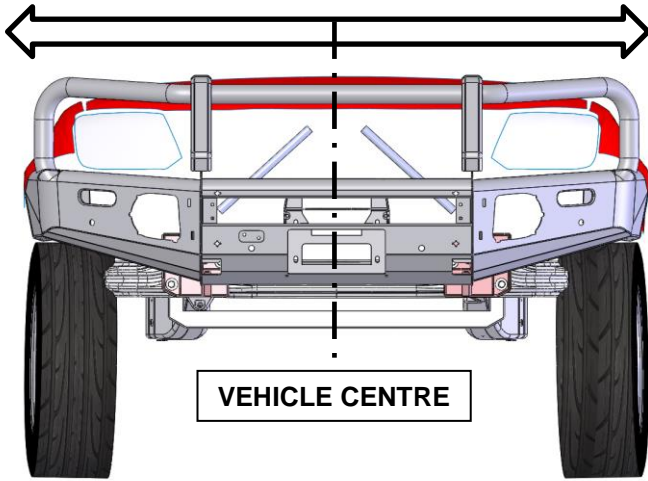
23. Loosely fit the bull bar mount braces to the chassis and bull bar mounts using M8 fastener sets.

WINCH FITMENT ONLY

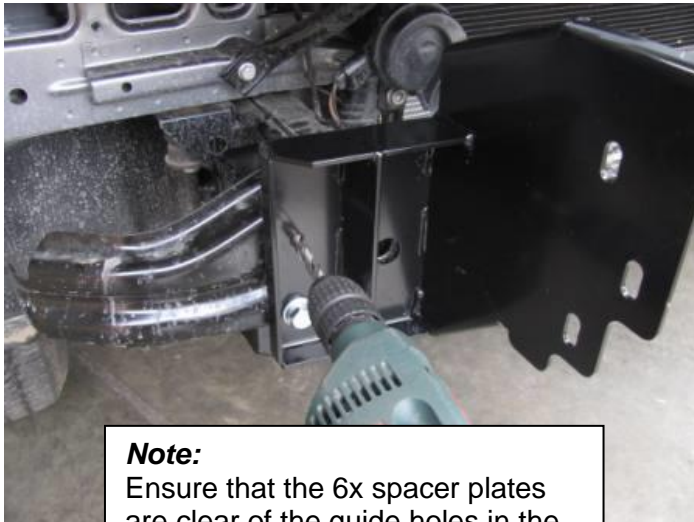
24. Loosely fit the Bracket Links (3750079R/L) to the mounts in nominal position using 2x M10 SEMS screws and flange nuts.



ADJUST MOUNTS TO CENTRE BAR



25. Trial fit the bull bar to the mounts and check left <--> right adjustment against vehicle. If biased to one side, remove bull bar and adjust mounts to centre the bull bar.
26. Carefully remove the bull bar from the mounts taking care not to move them.



Note:

Ensure that the 6x spacer plates are clear of the guide holes in the bumper mount before drilling the pinning holes.

RH SHOWN, LH OPPOSITE

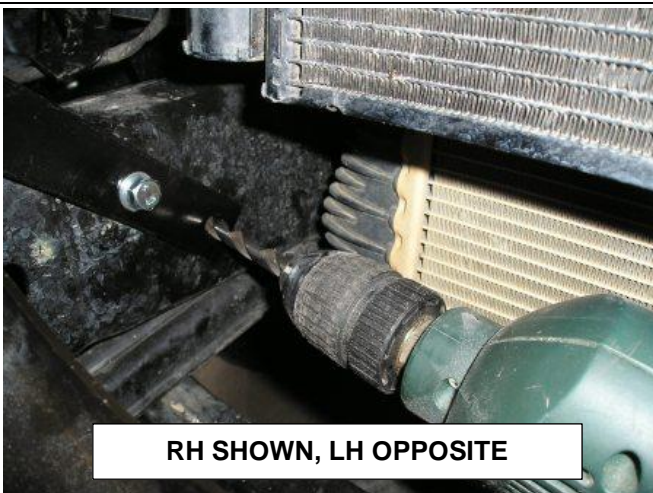
27. Drill the 4 pinning holes in the bumper (2 per side) with a Ø10mm drill bit using the holes in the bull bar mount as a guide.
28. Touch up cut edges with black spray paint
29. Fasten with 4x M10 SEMS bolt and 4x flange nuts at the newly drilled locations
30. Tighten all fasteners to specified torque.



WARNING: Drilling & Cutting operations can result in flying debris. Eye and ear safety protection should be worn.

 M10- 44Nm

 M12-77Nm



RH SHOWN, LH OPPOSITE

31. Now using the mount brace lower hole as a guide drill a Ø10 mm hole into the vehicles chassis rail on each side.
32. Touch up cut edges with black spray paint

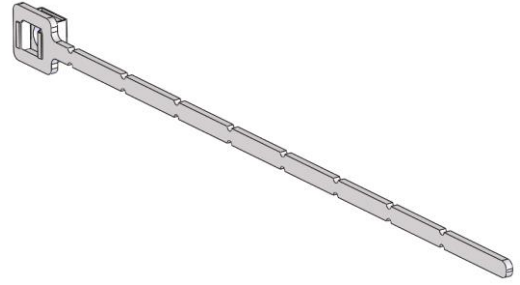


WARNING: Drilling & Cutting operations can result in flying debris. Eye and ear safety protection should be worn.



LH SHOWN, RH OPPOSITE

33. Fit 2x M10 cage nuts to 3x M10 nut plates supplied as shown below.



34. Feed nut plates through access hole at front of chassis rail, align with the drilled holes and fasten using 2x M10 SEMS bolts
35. Break off nut plates, position and tape ends together so as not to rattle.


 **M10- 44Nm**

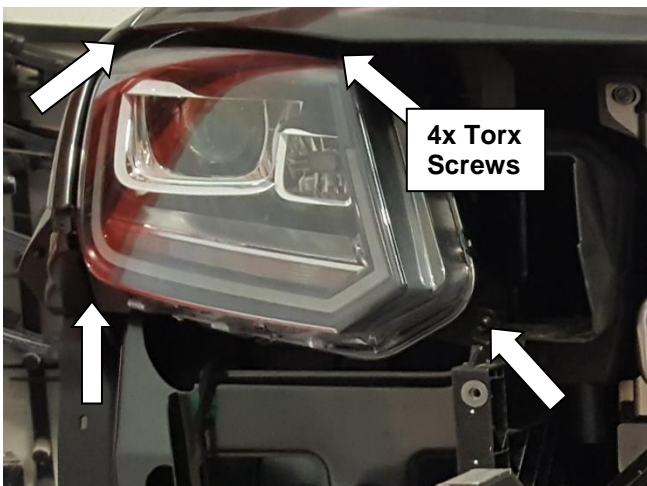


RH SHOWN, LH OPPOSITE

36. Installed mount braces should appear as shown.
37. Tighten all fasteners to specified torque.

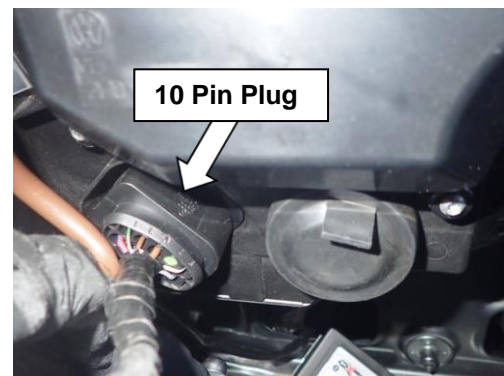
 **M8-22Nm**

 **M10- 44Nm**



RH SHOWN, LH OPPOSITE

38. Remove the RH and LH head lamps from the vehicle by undoing the 4x Torx screws that secure the lamp to the vehicle.
39. Disconnect the 10 pin vehicle head light plugs from the rear of the head lights.



MY 16 ON VEHICLE HARNESS PLUG CONNECTION

| | GROUND | INDICATOR | CLEARANCE V6 | CLEARANCE 4 Cyl |
|------------|---------------|------------------|---------------------|------------------------|
| RHS | PIN 3 | PIN 9 | PIN 4 | PIN 10 |
| LHS | PIN 3 | PIN 9 | PIN4 | PIN 10 |

Note: Wire Pin Outs may vary from model to model from 2010 On. If unsure use a test light to determine the correct wires.

40. Following fitting instructions 3789197 supplied in kit 6821287; install the LED combination lamp looms (also supplied in the same kit).

Notes:

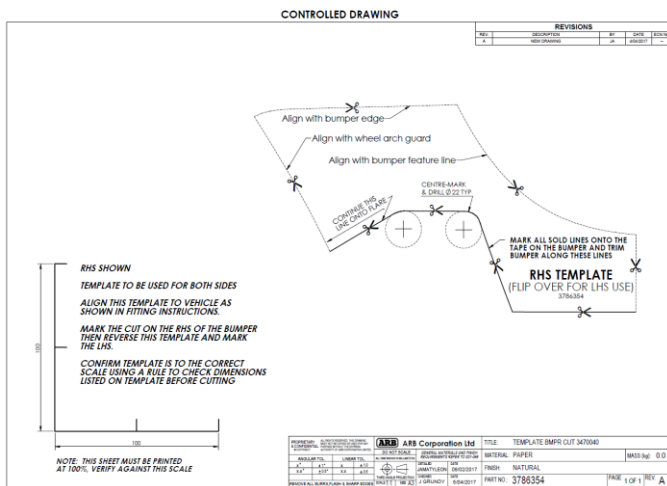
- Use a test light or multimeter to pick the appropriate wire to attach the loom to.
- Cover each joint with either insulation tape or heat shrink tube.

LED Indicator wiring colours

| Function | LED Wire |
|-----------------|-----------------|
| Ground | Black |
| Indicator | Green |
| Clearance | Red |



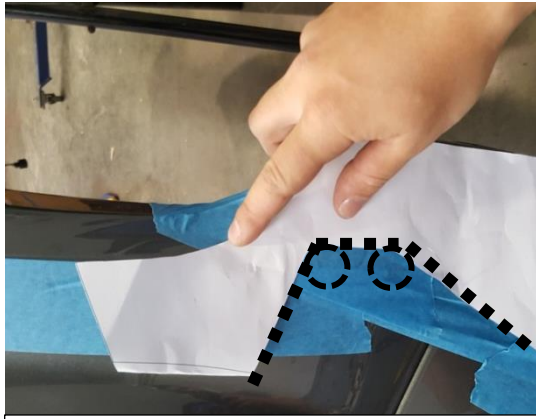
41. Mask out front section of bumper using masking tape along ridge marking and side where bumper cut will be performed.



42. Using scissors carefully cut out the supplied paper template.

Note: This Template will be used for both LH and RH sides; be careful not to damage it.

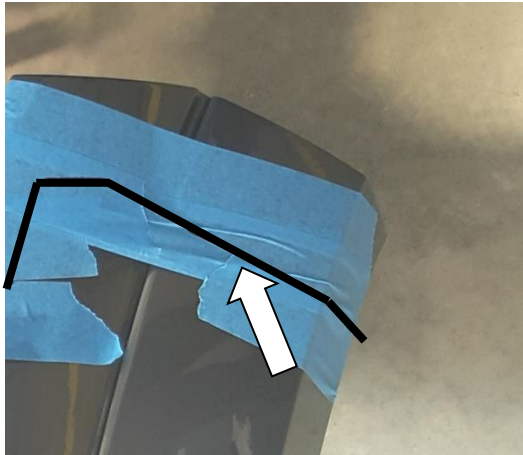
CAUTION: CHECK SCALE OF TEMPLATE BEFORE USE.



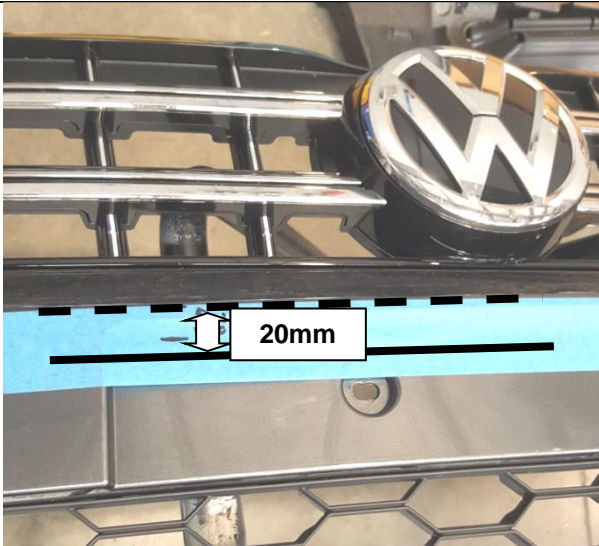
RH SHOWN, LH OPPOSITE

43. Place bumper cut template onto RH side of bumper as shown aligning with edges and features specified on bumper cut template and mark trimming lines and $\text{Ø}22\text{mm}$ hole centres as specified.

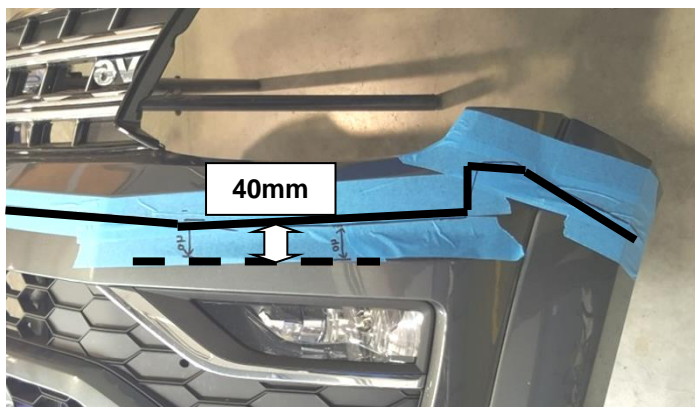
44. Repeat for LH side.



45. Continue straight line onto bumper flares on both sides.



46. Mark a line on front face of bumper 20mm below ridge as shown.



47. Mark straight line on RH side of bumper 40mm below ridge as shown until it intersects other lines marked previously.

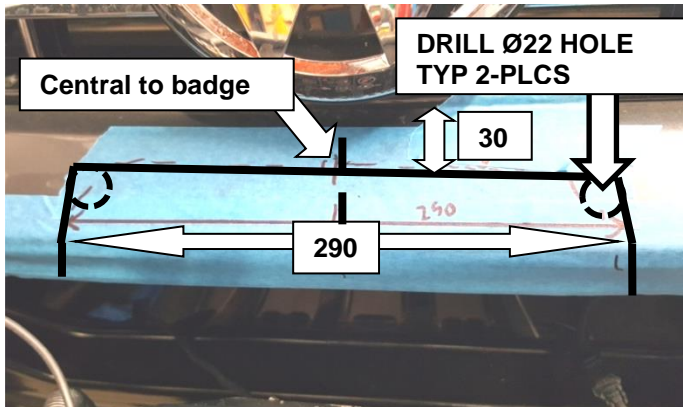
48. Repeat for LH side.



49. Drill 4x Ø22mm holes at sides then carefully cut bumper as marked using a jigsaw or similar cutting tool.
50. File down all burrs from cut edges using hand file.

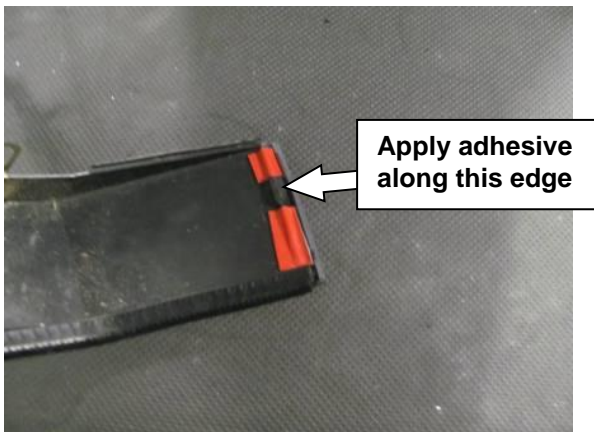


WARNING: Drilling & Cutting operations can result in flying debris. Eye and ear safety protection should be worn.

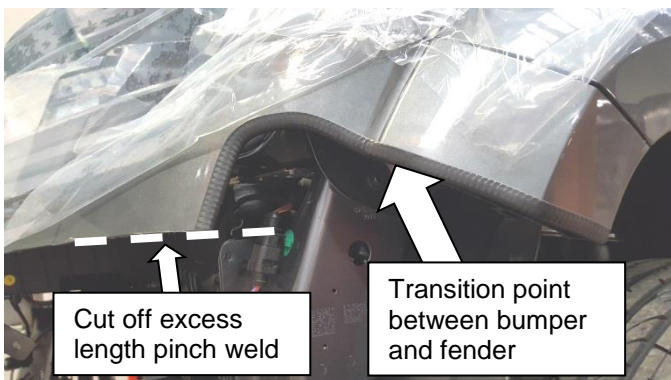


STEPS 51-54 ARE FOR BULL BARS FITTED WITH WINCH CONTROL BOX ONLY

51. Mark lines on front section of bumper as shown.
52. Drill 2x Ø22mm holes as shown.
53. Carefully cut marked section out using a jigsaw or similar cutting tool leaving R11mm at each corner of cut-out.
54. Apply pinch weld to area cut and trim off any excess length.



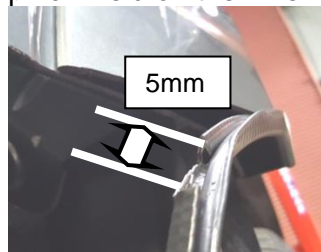
55. Re-fit bumper to vehicle and refit the cut flare back onto the bumper. To add stability apply some adhesive (Sikaflex) to the edge of the flare as shown (Clean both the flare and the bumper with wax and grease remover where the adhesive adheres too).
56. Once flare is located press firmly to ensure sufficient contact has been made, clean any excess adhesive.

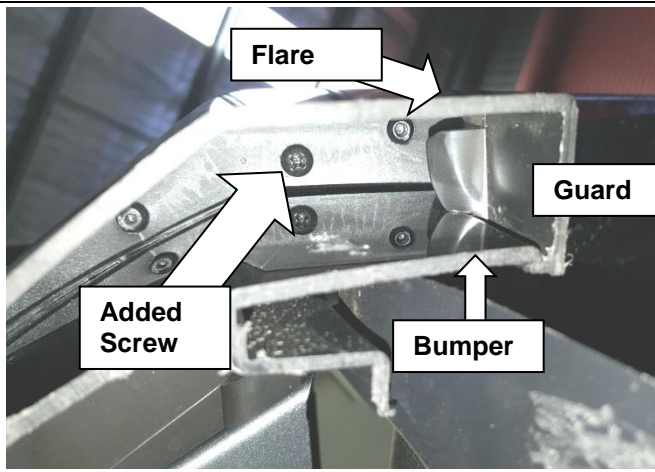


LH SHOWN, RH OPPOSITE

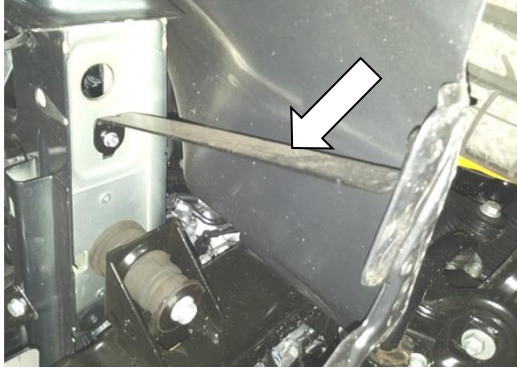
57. Apply pinch weld to RH & LH cut sections of the bumper and cut off any excess length.

Note: For transition point between bumper and flare, cut small 5mm section out of pinch weld on the inner side.






58. Looking upwards (directly underneath cut) carefully drill a 3mm hole using a 3mm drill bit through the fender and guard.
59. Repeat for opposite side
60. Fasten a Plastite 45 #10x16mm screw to fix flare to guard at the location drilled.
61. Repeat for opposite side.



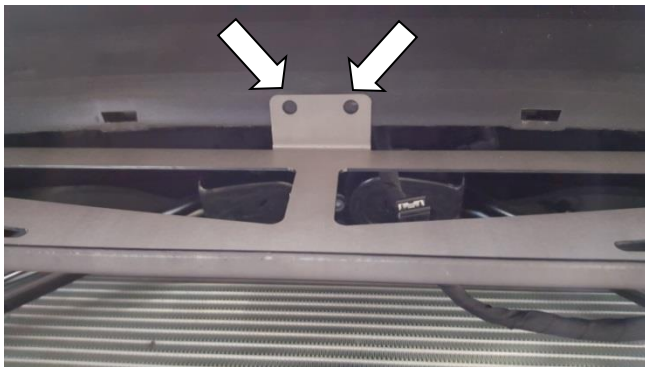
62. Remove long reinforcement brackets retaining wheel arch housings and dispose. Repeat for opposite side.



63. Fit sensor support bracket using 4x M6 fastener sets.
64. Check bracket is central to bumper.

 **M6 – 9Nm**

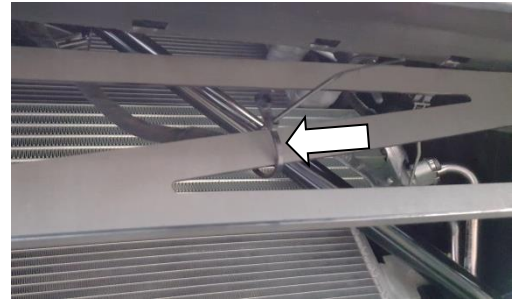
100



65. Drill 2x Ø6mm holes through bumper upwards using holes in bracket as guide and fasten bumper section onto bracket using M6 fastener sets.



66. Secure air temperature sensor to tab on bracket as shown and secure harness to bracket using cable tie.

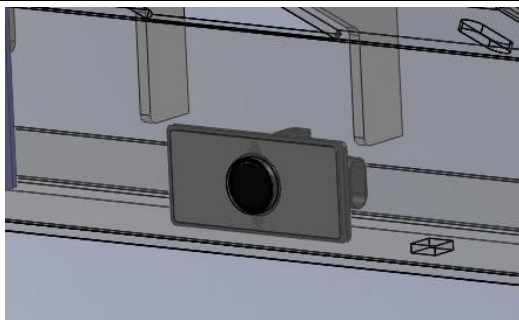


Note: If not fitting park sensors fit blanking plugs into sensor holes and proceed to step 72.

If fitting sensors to MY16 on vehicles refer to fitting instruction # 3789638 then continue to step 72

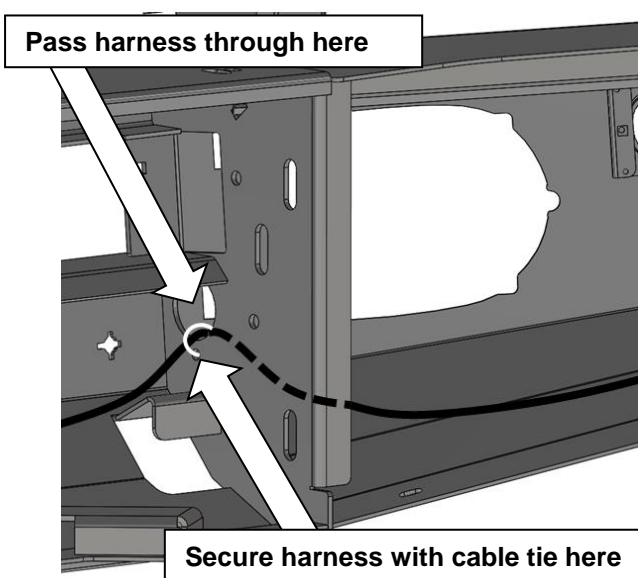
DO NOT PAINT OVER SENSORS.

67. Remove protective layer from adhesive and attach to front face of sensor bracket in two places as shown.
68. Using supplied alcohol swab, clean inside face of the bar where the sensor and bracket will mount.
69. Following instructions on 3M primer pencil, activate it and apply primer to inside face of bar around sensor hole cut out where the adhesive will stick.

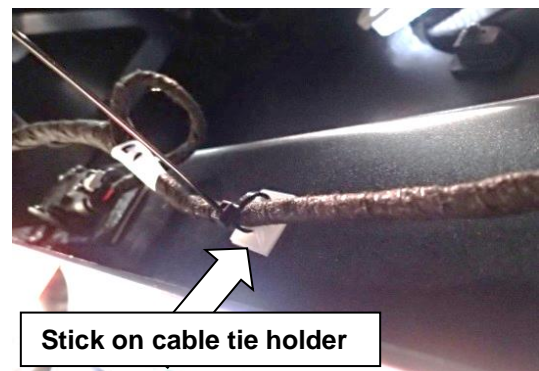


70. Place sensor in bracket. Remove outside protective layer from adhesive and carefully locate the sensor and bracket into the bar in the correct orientation.

Caution: Misalignment of sensor to hole in bull bar may cause malfunction.



71. Fit sensor wiring harness passing it through holes in uprights, secure in place using cable ties. Using stick on cable tie holder secure loom in place on the wing and inside the lip of the lower pan.



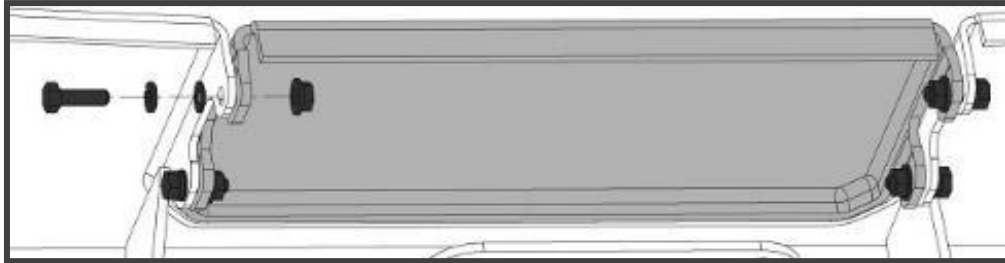
Caution: Park sensor harness must not be pulling on sensors.

FITTING PROCEDURE

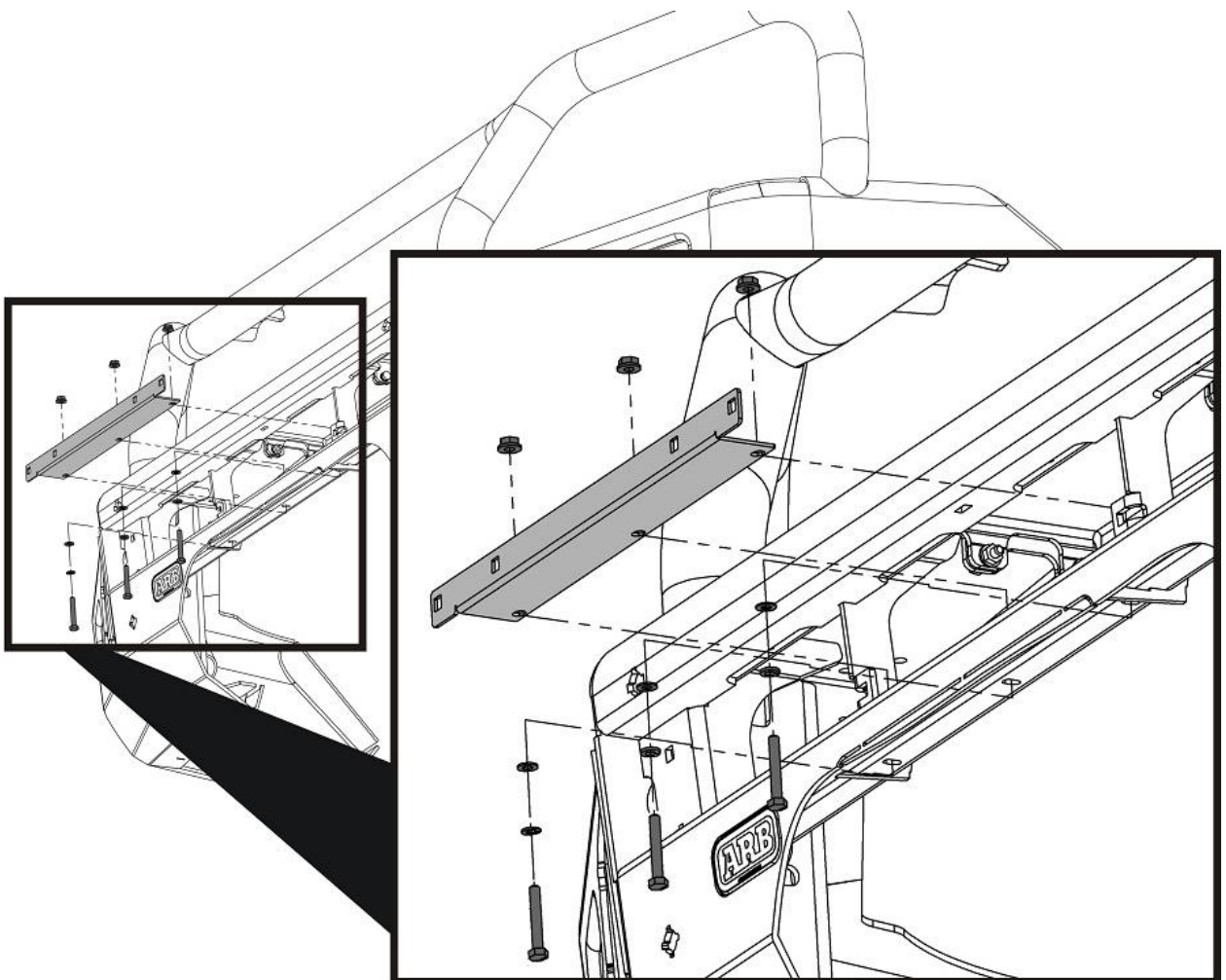
Note: If fitting a winch proceed from here using instructions in “3538070 Winch Install Kit”. Once winch is installed please continue to step 75. If no winch is being fitted continue from here.

72. Slide the winch cover panel from the bottom up until it is level with the top face of the bar.
73. Fit the winch cover panel to the bar using 4 x M6 x 20 hex bolts, spring washers, flat washers and flange nuts.

Warning: Be careful not to scratch the finish of the winch cover panel.



74. Fit Number plate bracket. Use M6 x 40mm hex bolts, 6mm spring washers, 6mm flat washers and M6 Flange nuts as shown



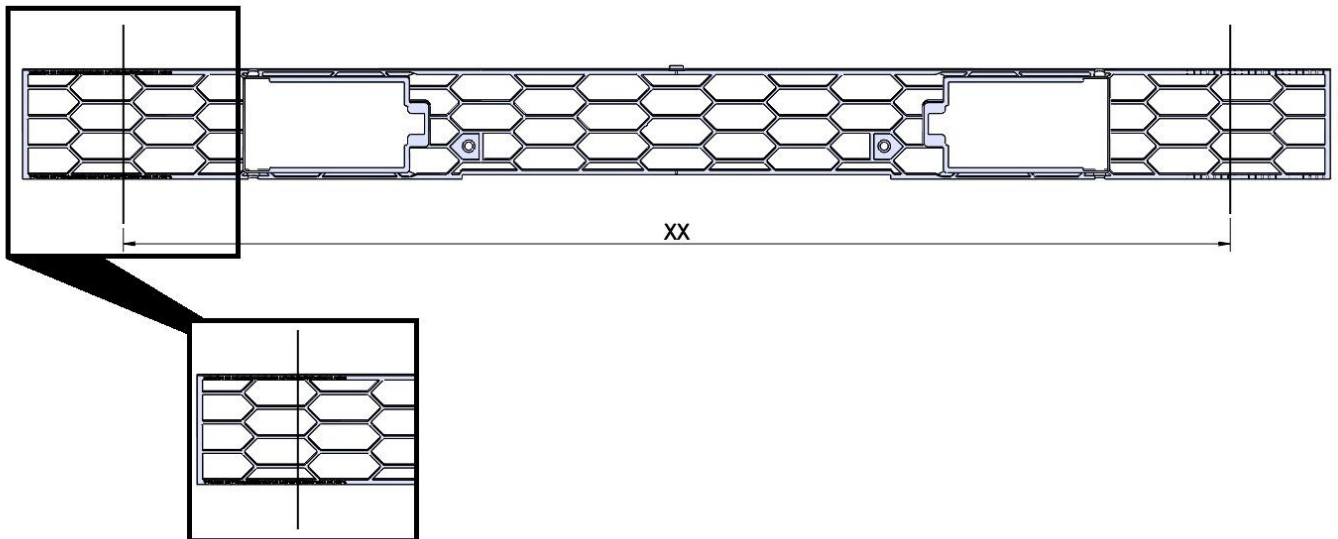
Generic image. Bull Bar shown may not be representative of actual product.

75. **The following steps show the fitment of the plastic moulded parts. The mouldings are supplied in kits along with all fasteners required for fitment. It is important that the fasteners supplied with each kit are only used for the mouldings from the same kit. The kits included in this bar kit are:**

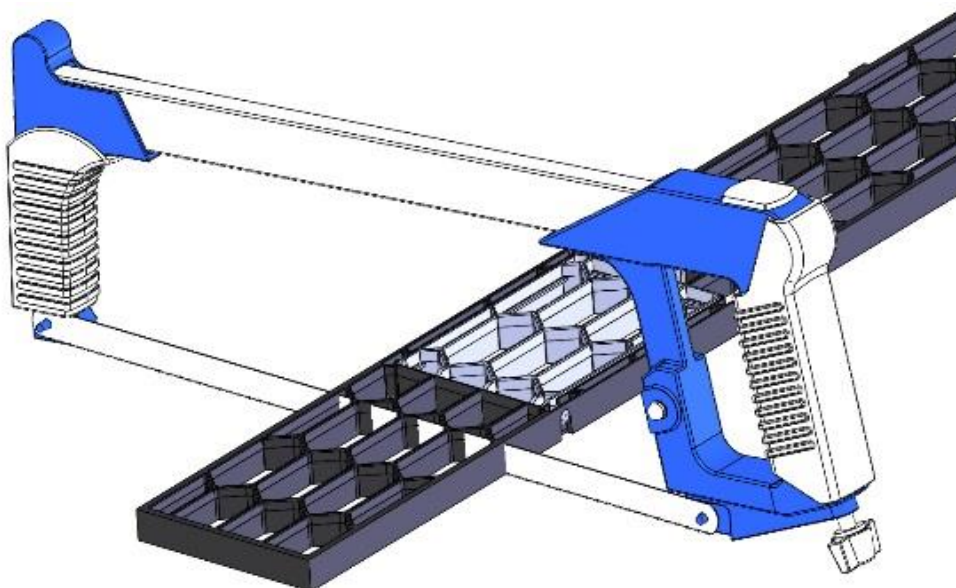
| Kit No. | Description |
|---------|-----------------------------|
| 5100200 | BUFF KIT 2PCE FRONT SECTION |
| 5100240 | BUFF KIT 2PCE REAR BAR |
| 3500880 | SPLIT PAN MESH KIT |
| 3163082 | FOG SURROUND KIT |

76. Mark the grille panel to be cut at the **810mm** marks at each end on the back face.

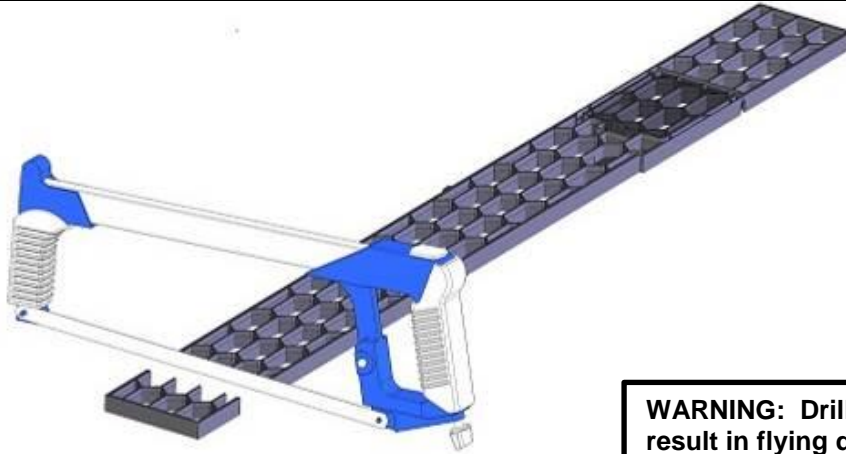
Note: When marked, double check the measurement with a measuring tool.



77. Use a hacksaw or similar cutting tool to carefully cut the grille panel at the positions marked in the step above.
78. Discard the off cuts and clean up the cut edges using a file or sandpaper.

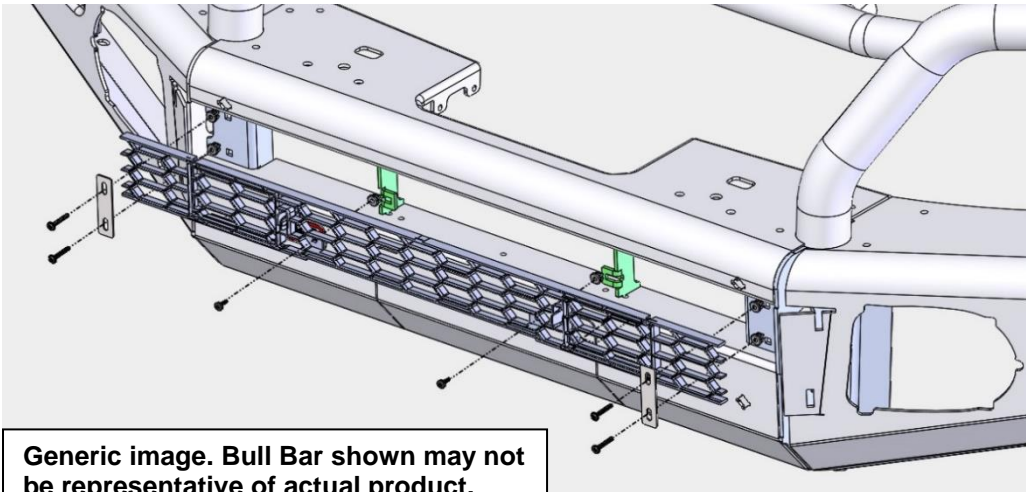


79. Use a hacksaw or similar cutting tool to carefully cut the grille panel at the positions marked in the step above.
80. Discard the off cuts and clean up the cut edges using a file or sandpaper.



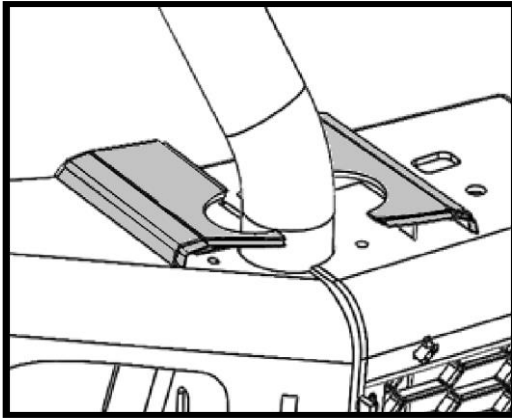
WARNING: Drilling & Cutting operations can result in flying debris. Eye and ear safety protection should be worn.

81. Insert the 6 x plastic grommets into the 6 square holes in the front face of the bar.
82. Insert the grille into the bar so that the hatch is on your right hand side (facing the front of the bar).
83. Attach the grille to the centre of the bar using the short screws into the grommets fitted above.
84. Attach the ends of the grille to the bar using the longer screws, through the clamp plates into the remaining grommets.

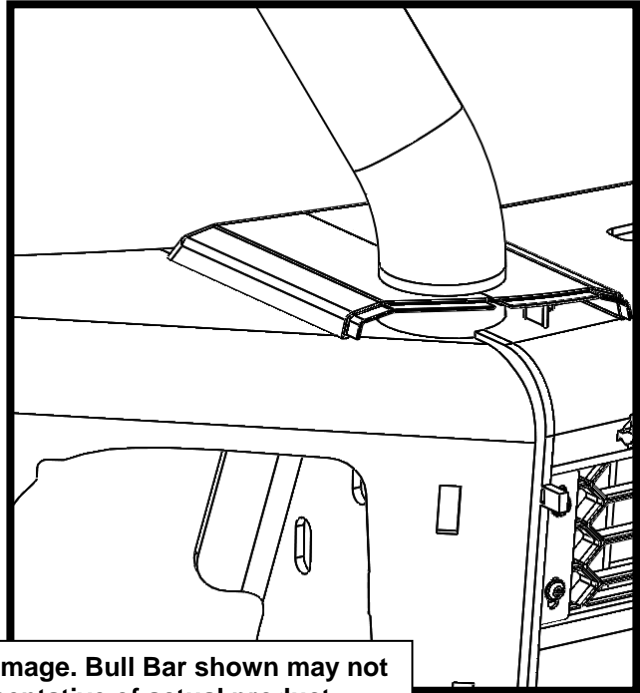
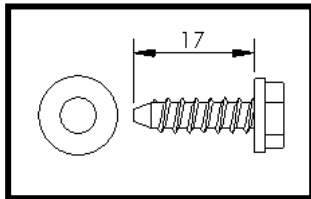


Generic image. Bull Bar shown may not be representative of actual product.

85. Place each of the Top Buffer sections onto the bar as shown. Ensure that the buffers are keyed together correctly. Fit 5 x screws and washers. Do not tighten screws. Leave enough play in buffers for adjustment later.



Fit washers under screw heads.

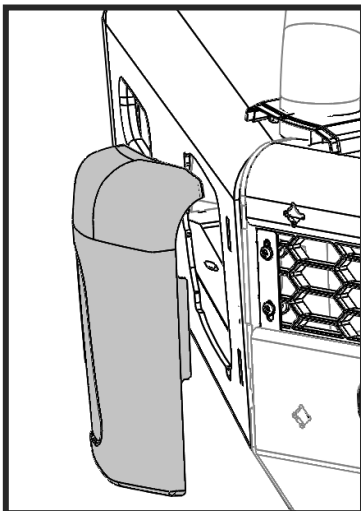


Generic image. Bull Bar shown may not be representative of actual product.

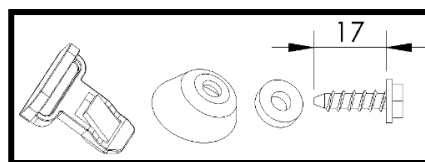
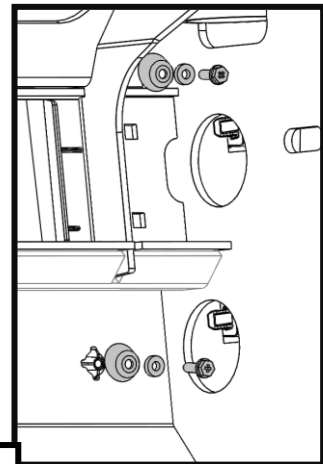
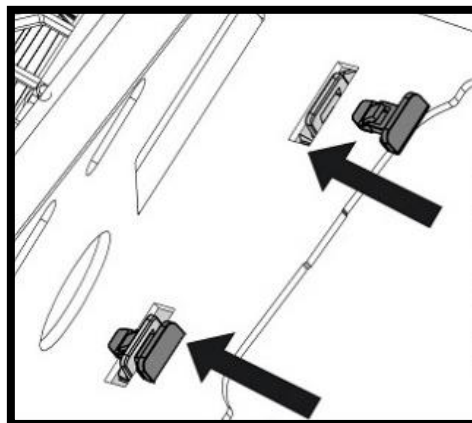
86. Attach the buffers to the front face of the bar using the angled cup washers, flat washers and screws. Insert clips through buffer tabs as shown.

Ensure the key on the top sections engage in the groove on the front buffer.

The widest point of the cup washers goes to the top of the bar.



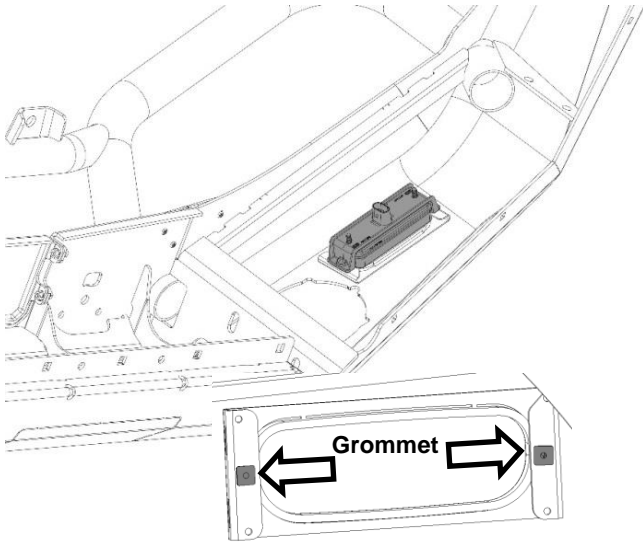
Fit washers under screw heads.



Generic image. Bull Bar shown may not be representative of actual product.

87. Ensure buffers are keyed together and are sitting correctly on the bar.

88. Tighten all screws.



89. Fit the 4x small plastic grommets to the bar and attach the combination LED lamps to the bar using the screws provided with the lamp kit.

90. Wire the combination lamp (kit: 6821287) to the vehicle's indicator and clearance lamp wiring using the screws and instructions provided with the lamp kit.

Caution: Cable tie all cables together and keep all cables clear of sharp edges and moving parts.

Wiring:

Green wire is Turn signal + (POS)

Black wire is – (NEG)

Red wire is – Clearance



RH SHOWN, LH OPPOSITE

91. With the assistance of another person, loosely fasten bar to mounts using 6x M12 fastener sets (bolt, spring washer, washer and flange nut), 3 per side.

Warning: Due to the weight of the bar and winch if fitted, it is advised that you use some form of mechanical assistance when lifting the bar onto the vehicle such as an elevating trolley.

WINCH FITMENT ONLY


92. Loosely fasten the brkt links (3750079R/L) to the bull bar as shown using 2x M10 SEMS bolts and flange nuts.

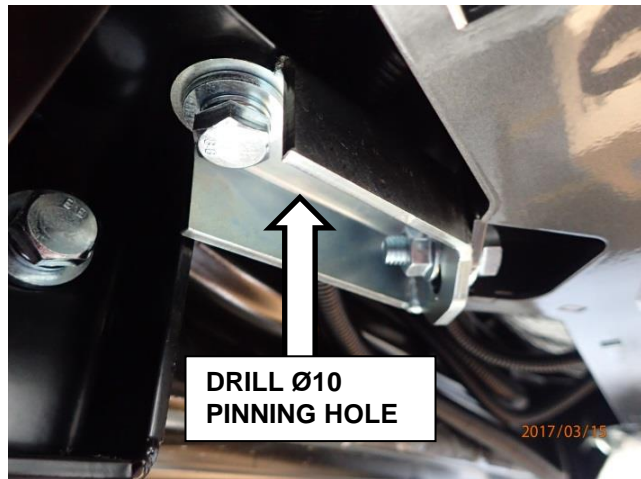




RH SHOWN, LH OPPOSITE

93. Position the bar so that it is level and there is a gap between the top face of the wings and the bottom edge of the guards of **18-22mm** and the wing tips are aligned with the edge of the wheel arch.
94. Tighten 6x M12 fasteners to the specified torque once satisfied with the position of the bar.


 **M12-77Nm**



DRILL Ø10
PINNING HOLE

WINCH FITMENT ONLY

95. Using the holes located in the brkt links (3750079R/L) as a guide, drill a Ø10mm pinning hole into the bull bar mount.
96. Touch up cut edges with black spray paint.
97. Fasten 6x M10 SEMS bolts and flange nuts.

 **M10-44Nm**

98.  

WARNING: Drilling & Cutting operations can result in flying debris. Eye and ear safety protection should be worn.



RH SHOWN, LH OPPOSITE

99. Assemble and install combination light surrounds (p/n 3163082) as per instructions no. 3789190 supplied with surround kit. Note: Optional fog lamps can be installed at this point as per fitting instruction supplied with fog lamp kit no. 3500590 and the 3500530 - ARB AUX Fog Light Loom kit.
100. Connect indicator looms to combination LED Indicator/Clearance light.
101. If installing fog lights Install ARB wiring loom 3500530 and switch into vehicle. Refer to instructions supplied with loom. Place switch inside cabin in a suitable position.

HINT: loosely fit top bracket to Fog light surround, then insert into Bull bar aperture. Fasten lower bracket, tighten all screws.

CAUTION: Cable-tie all cables together and keep all cables clear of sharp edges and all moving parts.

102. Check the operation of all lights wired during bar fitment.




RH SHOWN, LH OPPOSITE

103. Using a long series bit, drill 4x Ø10mm pinning holes in the mount plates (access via the lamp housing opening in the wing) using the pre-cut holes in the bar uprights as a guide.

HINT: Place some masking tape or low tack film around the lamp opening in the wing to protect the bar from accidental damage during the drilling operations.

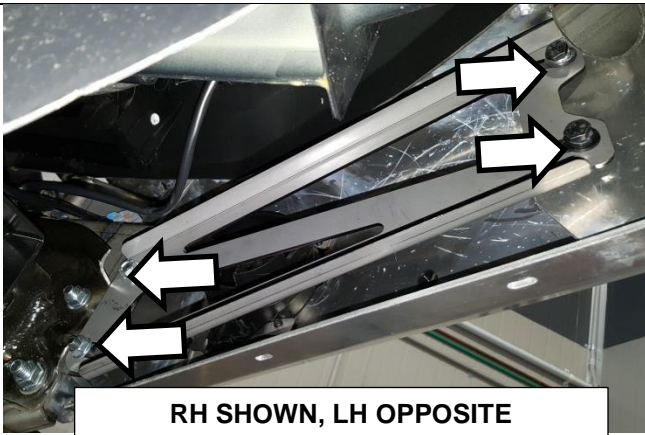
104. Touch up cut edges with black spray paint.

105. Pin the holes using 4x M10 SEMS bolts and 4x M10 flange nuts.

 M10-44Nm




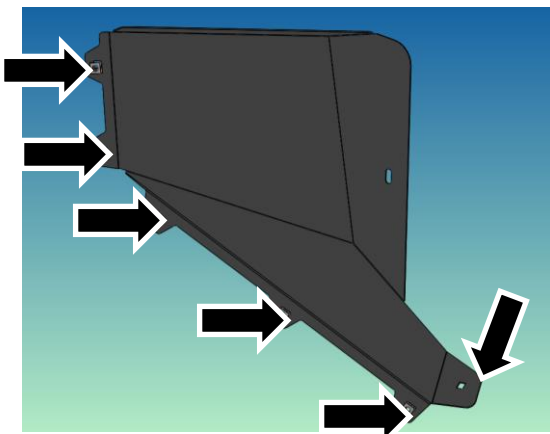
WARNING: Drilling & Cutting operations can result in flying debris. Eye and ear safety protection should be worn.



RH SHOWN, LH OPPOSITE

106. Fit wing brace to each wing and mount as shown using 4x M10x30mm Sems Bolt and M10 flange nuts.

 M8 – 22Nm

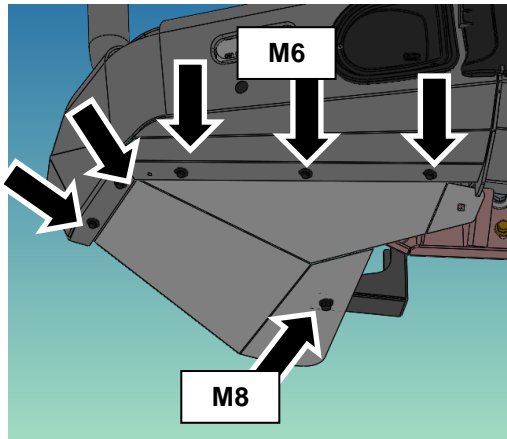


RH SHOWN, LH OPPOSITE

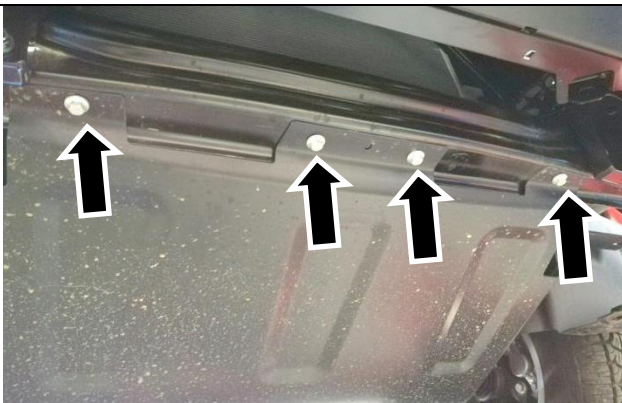
107. Fit 6x M6 cage nuts to each of the wing underpanels as shown.



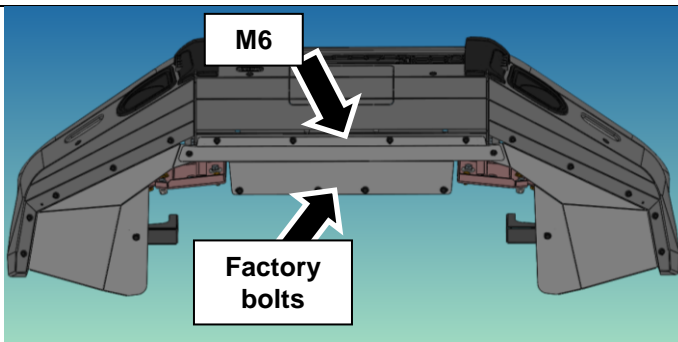
108. Fit 4x M6 cage nuts to lower centre section of the bull bar as shown.



109. Fit both RH & LH underpanels to bulbar and wing support brackets using M6 and M8 fasteners.





110. Remove and set aside 4x bolts retaining factory stone guard.

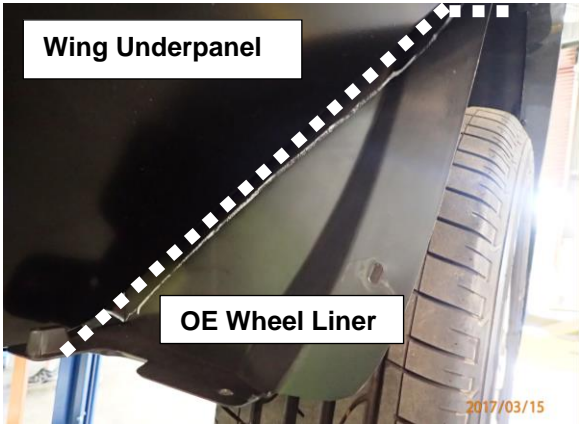


111. Loosely fasten centre panel stone tray to bar using M6 fasteners and factory bolts removed in previous step.

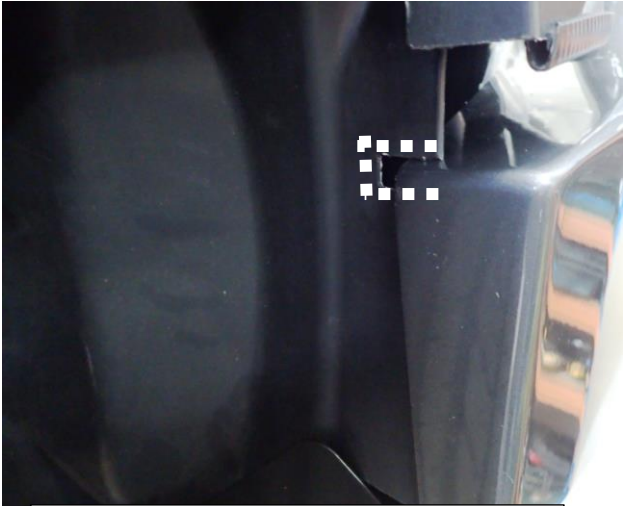
112. Tighten all fasteners fixing underpanels to specified torque.

 **M8 – 22Nm**

 **M6 – 9Nm**



LH SHOWN, RH OPPOSITE



RH SHOWN, LH OPPOSITE



RH SHOWN, LH OPPOSITE

113. On the OE plastic wheel arch liners, mark lines from inside the bottom corner of the bar wing tip horizontally across to the wing underpanel then down along the sheet metal panel as shown.
114. Using multitool, scissors or knife, carefully cut along the marked lines and discard the lower section.



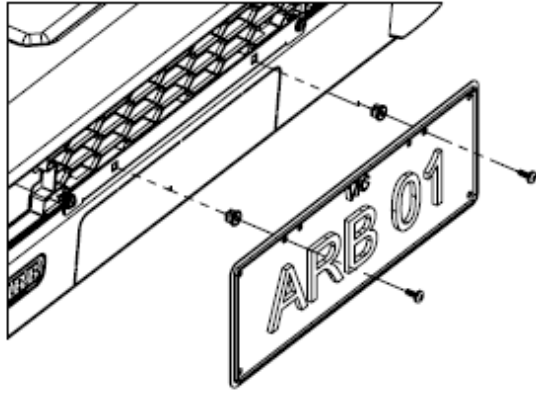
WARNING: Drilling & Cutting operations can result in flying debris. Eye and ear safety protection should be worn.

115. Notch the OE wheel arch liners to neatly fit around the bull bar wing tip at the top as shown.
116. Tuck the remaining inner guards into the wing underpanels.

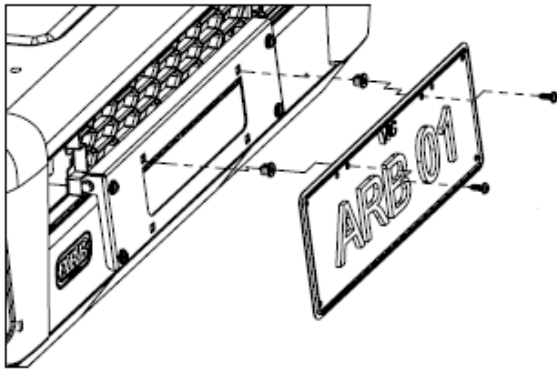


WARNING: Drilling & Cutting operations can result in flying debris. Eye and ear safety protection should be worn.

117. Trimmed OE liners should appear as shown at left.



118. If no winch is fitted. Fit the plastic plugs into the square holes in the registration plate bracket. Fit the registration plate to the bull bar using the black self-tapping screws.



119. If winch is fitted. Fit the plastic plugs into the square holes in the number plate bracket lift up. Fit the registration plate to the bull bar using the black self-tapping screws.

NOTICE: ONCE SUMMIT BAR IS FITTED:

- ◆ Ensure all bolts are tensioned correctly.
- ◆ All wiring is clear of sharp edges or moving surfaces and secured properly.
- ◆ Piping is secured well away from sharp or moving components.
- ◆ Check operation of winch, if fitted.
- ◆ Check all wiring and connections to turn signal lamps, sensors, headlamp washers etc. are functioning correctly.
- ◆ Misalignment of parking sensor to hole in bull bar may cause malfunction, if fitted.
- ◆ Test operation of parking sensors after fitment, if fitted.

NOTE:

If parking sensors are fitted, do not add any accessories to the Bull Bar on or around the sensors, this may affect the function of the sensors.

Sensors may not function well under the following conditions:

Ensure all bolts are tensioned correctly:

- ◆ After the vehicle, has been sitting out in hot or cold weather.
- ◆ When the system is affected by electrical equipment or devices generating an ultrasonic wave.
- ◆ When operating in bad weather

FINAL PRODUCT ON VEHICLE

