



FITTING INSTRUCTIONS

Part Number: 3500770

Product

Description: BRACKET SOL PACK SMITTYBILT GEN2 X20 SUIT 98510

ARB 4x4 ACCESSORIES

Corporate Head Office

42-44 Garden St
Kilsyth, Victoria
AUSTRALIA 3137

Tel: +61 (3) 9761 6622
Fax: +61 (3) 9761 6807

Australian enquiries
North & South American enquiries
Other international enquiries



sales@arb.com.au
sales@arbusa.com
exports@arb.com.au

www.arb.com.au

REQUIRED TOOLS FOR FITMENT OF PRODUCT:

BASIC TOOL KIT	
----------------	--

HAVE AVAILABLE THESE SAFETY ITEMS WHEN FITTING PRODUCT:

Protective eyewear		Hearing protection	
--------------------	---	--------------------	---

NOTE: 'WARNING' notes in the fitting procedure relate to OHS situations, where to avoid a potentially hazardous situation it is suggested that protective safety gear be worn or a safe work procedure be employed. If these notes and warnings are not heeded, injury may result.

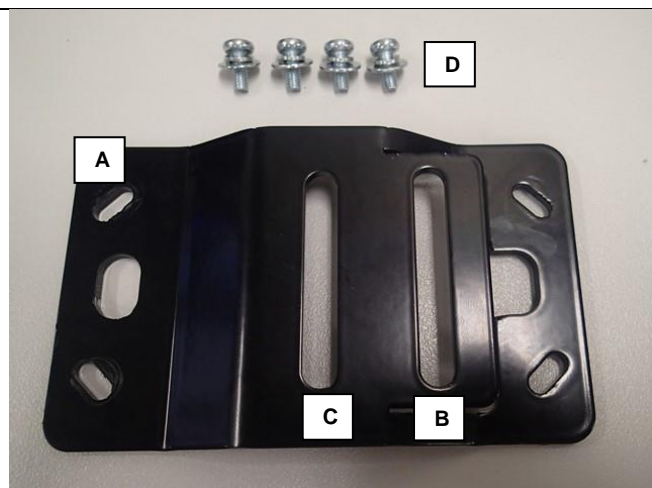
FASTENER TORQUE SETTINGS:

SIZE	Torque Nm	Torque lbft
M6	9Nm	7lbft
M8	22Nm	16lbft
M10	44Nm	32lbft
M12	77Nm	57lbft

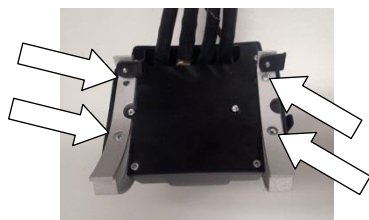
PARTS LISTING

APPLICATION.	PART NO.	QTY	DESCRIPTION
BRACKET TO SOLENOID BOX	3759529	1	BRACKET WINCH CONTROL BOX
	6151281	4	SCREW M5x12 PAN HEAD
	4584337	4	WASHER SPRING M5
	4584338	4	FLAT WASHER M5x12x1

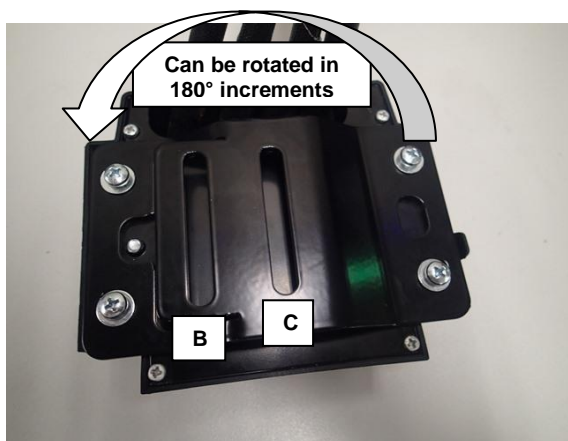
FITTING PROCEDURE



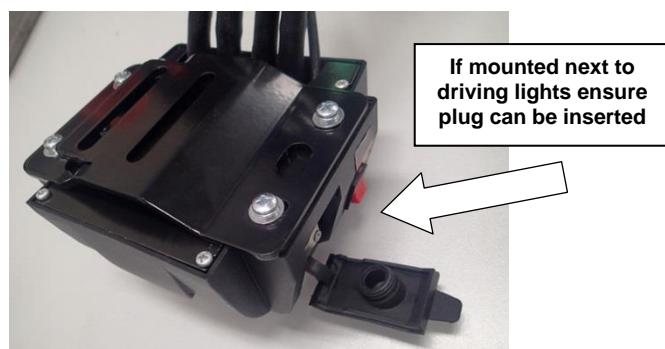
1. The mounting bracket features the following mounting holes:
A- Slotted holes for solenoid box bolts.
B- Offset bullbar mounting slot.
C- Centre bullbar mounting slot.
Use the following to mount the bracket to the box.
D- M5x12 Screw, Spring Washer & Flat Washer.



2. Turn over Smittybilt control box. Remove the Smittybilt mounting brackets.



3. Fasten bracket to box using M5x12 screw, spring washer and flat washer supplied. The bracket can be rotated in 180° increments to allow the placement of power cables and control input in the position suited to your application.
4. Fit bullbar supplied mounting bolts to either one of the main mounting slots first (slot B or C).



5. Fit to vehicle using fasteners supplied with bullbar.