



# FITTING INSTRUCTIONS

Part Number: **3450470**

Product **STUBBY BAR – EXPORT ONLY**

Description:

Suited to **2018 ON JL WRANGLER 2 AND 4 DOOR MODELS**  
vehicle/s:

## WARNING

### NOTE THE FOLLOWING:

- ◆ This product must be installed exactly as per these instructions using only the hardware supplied.
- ◆ In the event of damage to any bull bar component, contact your nearest authorised ARB stockist. Repairs or modifications to the impact absorption system must not be attempted.
- ◆ Do not use this product for any vehicle make or model, other than those specified by ARB.
- ◆ Do not remove labels from this bull bar.
- ◆ This product or its fixing must not be modified in any way.
- ◆ The installation of this product may require the use of specialized tools and/or techniques
- ◆ It is recommended that this product is only installed by trained personnel
- ◆ These instructions are correct as at the publication date. ARB Corporation Ltd. cannot be held responsible for the impact of any changes subsequently made by the vehicle manufacturer
- ◆ During installation, it is the duty of the installer to check correct operation/clearances of all components
- ◆ Work safely at all times
- ◆ Unless otherwise instructed, tighten fasteners to specified torque

## ARB 4x4 ACCESSORIES

Corporate Head Office

42-44 Garden St  
Kilsyth, Victoria  
AUSTRALIA 3137

Tel: +61 (3) 9761 6622  
Fax: +61 (3) 9761 6807

Australian enquiries  
North & South American enquiries  
Other international enquiries

sales@arb.com.au  
sales@arb.com.au  
exports@arb.com.au

[www.arb.com.au](http://www.arb.com.au)

# GENERAL CARE AND MAINTENANCE

By choosing an ARB Bar, you have bought a product that is one of the most sought after 4WD products in the world. Your bar is a properly engineered, reliable, quality accessory that represents excellent value. To keep your bar in original condition it is important to care and maintain it following these recommendations:



As part of any Pre Trip Preparation, or on an annual basis, it is recommended that a thorough visual inspection of the bar is carried out, making sure that all bolts and other components are torqued to the correct specification. Also check that all wiring sheaths, connectors, and fittings are free of damage. Replace any components as necessary. This service can be performed by your local authorized ARB Stockist.

## FITTING REQUIREMENTS

### REQUIRED TOOLS FOR FITMENT OF PRODUCT:

BASIC TOOL KIT	TORQUE WRENCH(ES) 9 -> 120Nm
GRINDER WITH CUTTING DISK	MARKING PEN
BLACK TOUCH UP PAINT	300MM RULE AND TAPE MEASURE
MASKING TAPE	LOW TACK PLASTIC SHEETING
SPIRIT OR DIGITAL LEVEL	TORX SET

### HAVE AVAILABLE THESE SAFETY ITEMS WHEN FITTING PRODUCT:

Protective eyewear		Hearing protection	
--------------------	---	--------------------	---

**NOTE: 'WARNING' notes in the fitting procedure relate to OHS situations, where to avoid a potentially hazardous situation it is suggested that protective safety gear be worn or a safe work procedure be employed. If these notes and warnings are not heeded, injury may result.**

### FASTENER TORQUE SETTINGS:

SIZE	Torque Nm	Torque lbft
M6	9Nm	7lbft
M8	22Nm	16lbft
M10	44Nm	32lbft
M12	77Nm	57lbft
3/8"	44Nm	32lbft

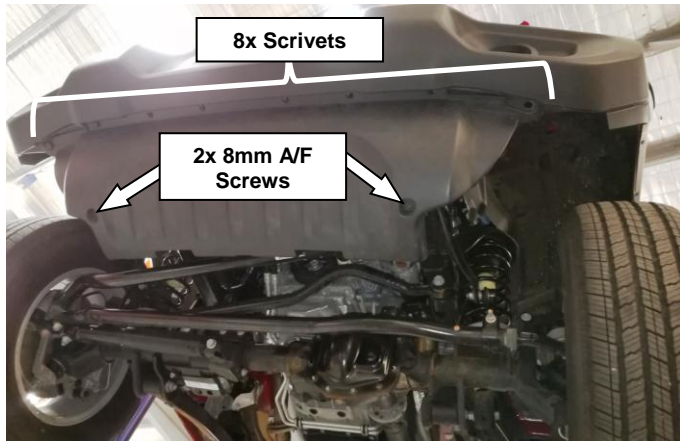
## PARTS LISTING

APPLICATION.	PART NO.	QTY	DESCRIPTION
FIT BAR, RECOVERY POINTS, FAIRLEAD & WINCH	4654470	1	ASSY WELDED 3450470 JL STUBBY
	4654472R	1	RECOVERY POINT RH JL
	4654472L	1	RECOVERY POINT LH JL
	4654471	1	WINCH CRADLE ASSEMBLY
	6151456	8	BOLT HEX HD M10 x 1.5 x 45
	4584345	8	WASHER M10
	6151443	2	BOLT BTN HD M6 x 20 BZ
	6151357	2	BOLT SEMS M10 x 30
	6151321	2	NUT FLANGE M10
	6151715	2	NUT M6 CAGED
FIT LICENSE PLATE	3750425	1	BRKT NUMB PLATE (NON-WINCH)
	3750433	1	BRKT NUMB PLATE MOUNT (WINCH)
	3750432	1	BRKT NUMB PLATE SUPP (WINCH)
	6151443	5	BOLT BTN HD M6 x 20 BZ
	5848302	2	PACKER RB NYLON
	6151173	5	NUT FLANGE M6
	6151223	2	NUT NYLOC M6
	6151459	2	BOLT BTN HD M6 x 16 BZ (TO SECURE LICENCE PLATE)
FIT UNDER PANEL	6523235	1	UNDER PANEL JL STUBBY
	6151307	6	BOLT BTN HD M8 x 20
	6151548	6	NUT FLANGE M8
FIT COVER PANEL (NON-WINCH)	6523234	1	COVER PANEL JL
	6151443	6	BOLT BTN HD M6 x 20 BZ
	6151173	6	NUT FLANGE M6
MISCELANEOUS	180302	10	CABLE TIE 4.8x200MM
	2125484	2	WARNING LABEL RECOVERY
	211512	1	OPERATOR INSTRUCTION CARD



1. To fit the bull bar to the vehicle, the plastic bumper and associated hardware must be removed from the vehicle.

**TIP:** Apply a sheet of low-tack across the front of the vehicle's grille to avoid marking the vehicle.



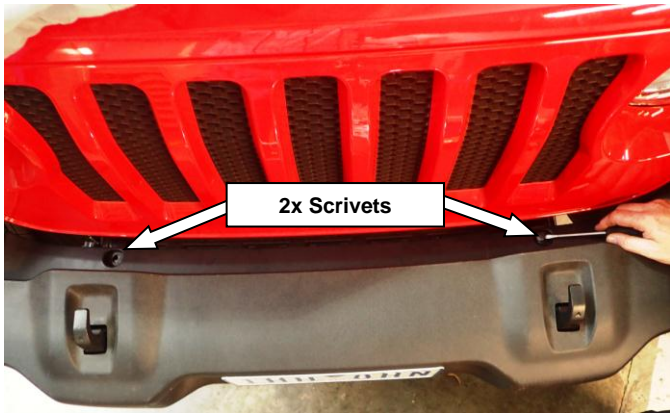
2. Remove 2x 8mm A/F Self Tapping Screws from the plastic Splash Panel below the Bumper.  
Remove 8x Scrivets from the Splash Panel.  
Remove the plastic Splash Panel from the vehicle and discard.



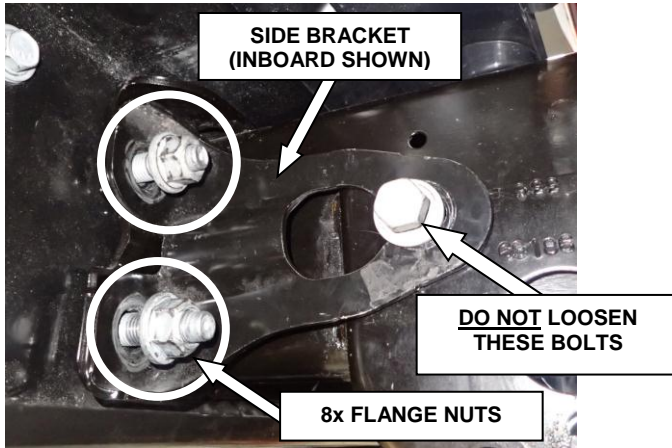
3. Remove 2x M10 SEMS from the steel front panel and discard.



4. Disconnect fog light harness, located on the RHS chassis rail, access from inside wheel arch.



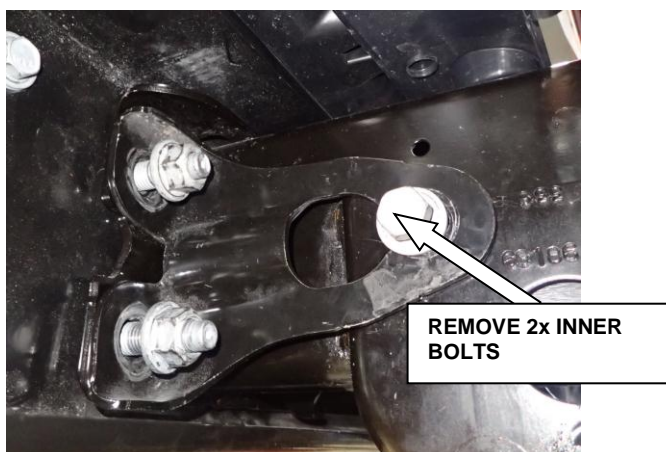
- Remove 2x scrivets from top of bumper with flat bladed screw driver and discard.



- Remove and discard 8x flange nuts from behind front bumper (4x RHS and 4x LHS).
- Leave the 4x OE Chassis Side Support Brackets and fasteners in place. (2x RHS and 2x LHS).



- Remove OE Bumper and integrated steel impact beam from vehicle and discard.



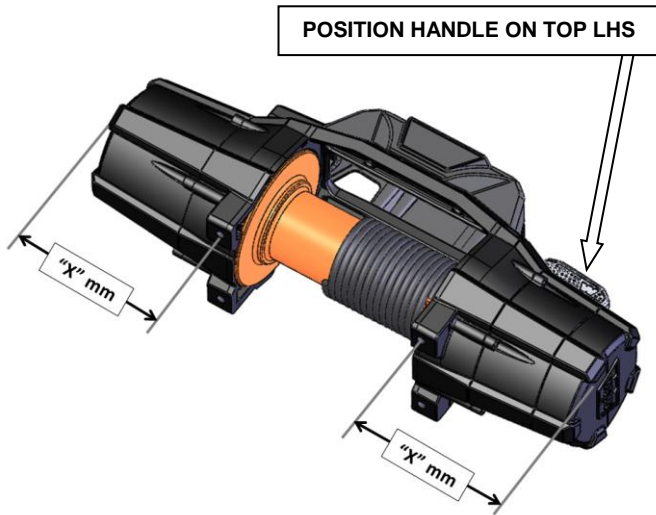
**FOR WINCH FITMENT ONLY:**

- Remove and set aside 2x bolts and support brackets located on inside of RHS & LHS chassis rails.

**FOR WINCH FITMENT ONLY:**

10. **If fitting a winch**, measure the distance “X” between the centre of the nearest winch mounting hole to the end of the housing. If this distance is greater than 172mm then a notch in the chassis flange must be cut.
11. Ensure that the winch gearbox handle is positioned to the top.
12. Warn Zeon Winch shown.

**Important Note: For early model Warn Zeon winches with 180° clutch handle lever. Order retro fit kit (PN#100240 Warn) for 90° Zeon clutch lever kit and install as per instructions supplied.**



**FOR WINCH FITMENT ONLY:**

13. **For Warn Zeon Winch;**
  - a. Mark local sections 10 wide x 10 down from the top inboard mount plate corners. Check that the overall width is 620mm centred across both RH and LH mounts.
  - b. Carefully cut the two marked sections through both the front Chassis Mount Plate and assembled inboard Chassis Side Support Bracket using an angle grinder and cutting disc taking care not to cut into the top inboard mount holes.



**WARNING: Drilling & cutting operations can result in flying debris. Eye and ear safety protection should be worn.**

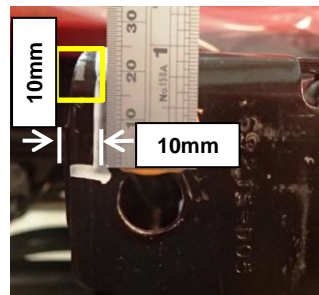
- c. Clean up any sharp edges or burrs with a file.
- d. Apply black spray paint to cut edges to prevent corrosion.

**FOR WINCH FITMENT ONLY:**

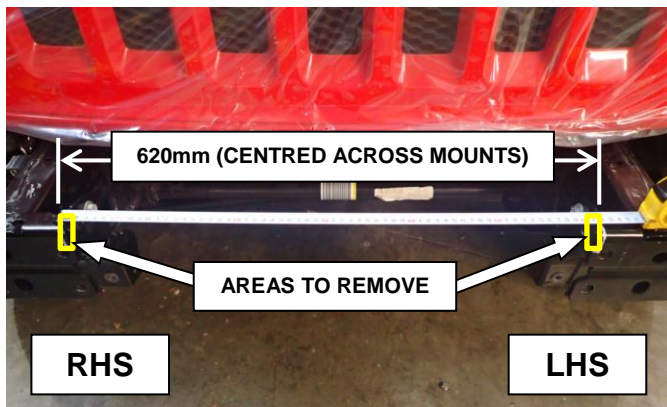
14. Rest winch cradle onto chassis end plates utilising hooks as shown.
15. Using bolts set aside in step 9, loosely fasten winch cradle to chassis.



**LHS SHOWN**



**LHS SHOWN**



**RHS**

**LHS**

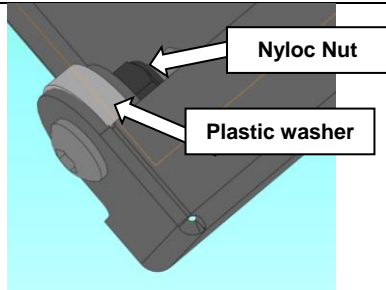




**FOR WINCH FITMENT ONLY:**

16. Install 4x Winch Nuts (2x Front and 2x Back) inside the mount feet of the Winch.
17. Position winch onto cradle and fasten using 4x Winch Bolts.

**Note:** Please consult your winch installation guide for further information in regards to wiring and fastener torque settings.

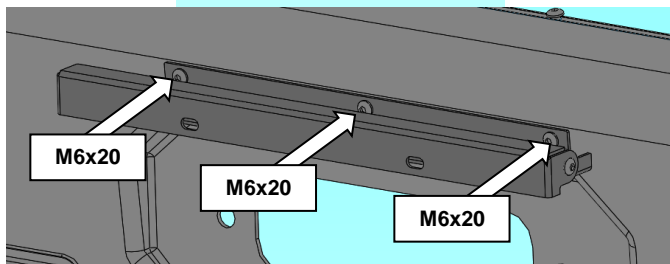


18. Assemble the pivoting License Plate Bracket sub-assembly as shown using the M6x20mm hardware provided. Ensure that it is not overtightened so that it may pivot with a reasonable amount of friction.

19. Secure assembly to bar using the M6x20mm hardware provided.



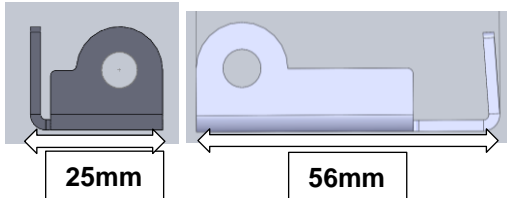
**M6 - 9 Nm.**



**NOTE:**

If fitting a roller fairlead use longer fixed bracket (56mm).

If fitting a hawse fairlead or for no winch, use shorter fixed bracket (25mm).

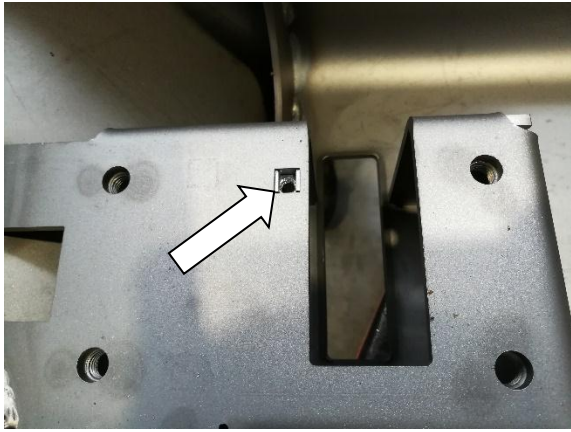


**FOR WINCH FITMENT ONLY:**

20. Install Fairlead/Hawse using M10 sems bolts and flange nuts provided. (**Roller Fairlead** type shown here)

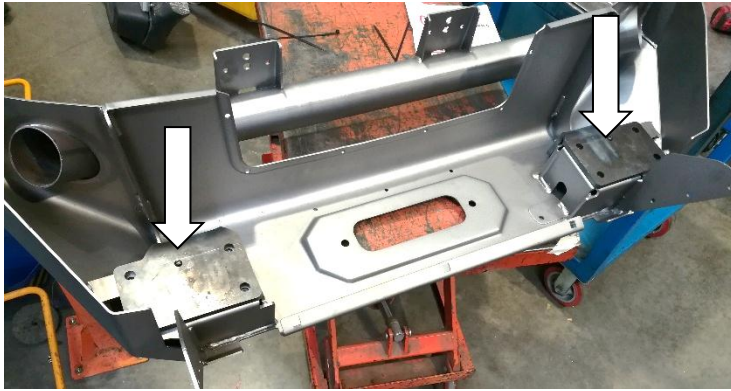


**M10 - 44 Nm.**

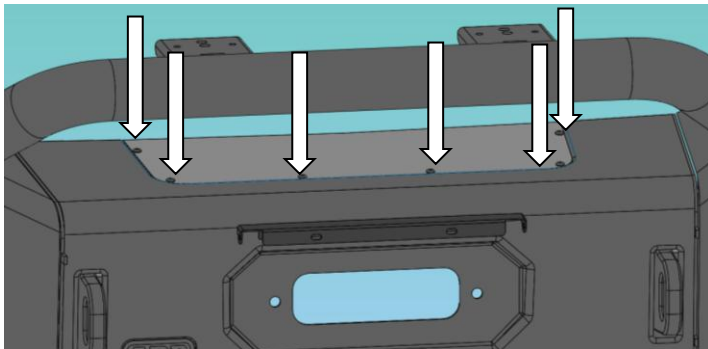


**LHS SHOWN – RHS OPPOSITE**

21. Fit 2x M6 cage nuts to mounts.



22. Secure recovery points to bar using 2x M6x20mm button head bolts provided.



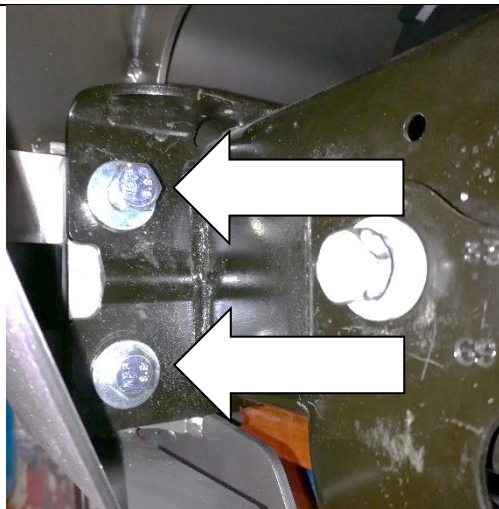
**FOR FITMENT WITHOUT WINCH ONLY:**

23. Secure cover panel to bar using 6x M6x20mm button head bolts and flange nuts provided.




24. With the assistance of a second person and/or height adjustable trolley, carefully position the bar in front of the chassis mounts, taking care to route any winch or other accessory cables around obstacles and clear of the chassis mounting faces.

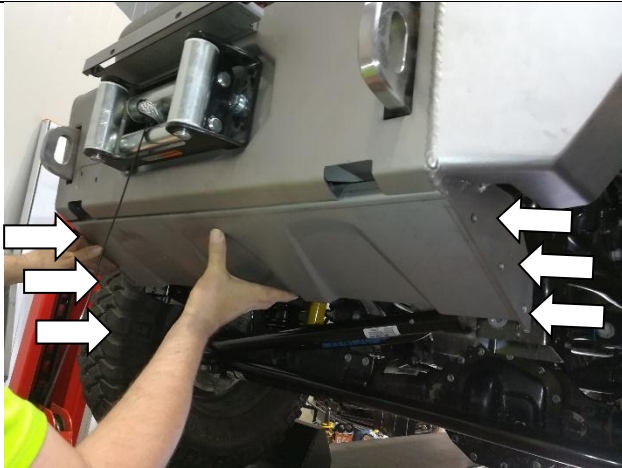




**LHS SHOWN – RHS OPPOSITE**

25. Secure Bar to mounts using 8x M10 bolts and flat washers provided. Torque to specification.
26. Tighten OEM bolts that were loosely fastened in STEP 15 to secure winch cradle (WINCH FITMENT ONLY).

 **M10 - 44 Nm.**



27. Fit under panel to outside of uprights using 6x M8 button head bolts and flange nuts provided.

 **M8 - 22 Nm.**



28. Fit number plate to number plate bracket using 2x M6x16mm hardware provided (if applicable).

 **M6 - 9 Nm.**



29. Fit recovery point decals to under panel directly below recovery points as shown.

## FITTED PRODUCT

### ONCE BAR IS FITTED:

- ◆ Ensure all bolts are tensioned correctly.
- ◆ All wiring & piping is clear of sharp edges or moving surfaces and is secured properly.
- ◆ Check operation of winch if fitted.
- ◆ Check all wiring is functioning correctly.

