



FITTING INSTRUCTIONS

Part Numbers: **2840050**
Product Description: **RECOVERY POINT**
Suited to vehicle/s: **FORD RANGER USA 2019 ON**

Please place these instructions in vehicle glovebox when complete.

WARNING

NOTE THE FOLLOWING:

- ◆ This product must be installed exactly as per these instructions using only the hardware supplied.
- ◆ In the event of damage to any recovery point component, contact your nearest authorised ARB stockist. Repairs or modifications must not be attempted.
- ◆ Do not use this product for any vehicle make or model, other than those specified by ARB.
- ◆ Do not remove labels from this recovery point.
- ◆ This product or its fixing must not be modified in any way.
- ◆ The installation of this product may require the use of specialized tools and/or techniques
- ◆ It is recommended that this product is only installed by trained personnel
- ◆ These instructions are correct as at the publication date. ARB Corporation Ltd. cannot be held responsible for the impact of any changes subsequently made by the vehicle manufacturer
- ◆ During installation, it is the duty of the installer to check correct operation/clearances of all components
- ◆ Work safely at all times
- ◆ Unless otherwise instructed, tighten fasteners to specified torque

ARB 4x4 ACCESSORIES

Corporate Head Office

42-44 Garden St
Kilsyth, Victoria
AUSTRALIA 3137

Tel: +61 (3) 9761 6622
Fax: +61 (3) 9761 6807

Australian enquiries
North & South American enquiries
Other international enquiries

sales@arb.com.au
sales@arb.com.au
exports@arb.com.au

www.arb.com.au

IMPORTANT INFORMATION

GENERAL CARE AND MAINTENANCE

By choosing an ARB Recovery Point, you have bought a product that is one of the most sought after 4WD products in the world. Your recovery point is a properly engineered, reliable, quality accessory that represents excellent value. To keep your recovery point in original condition it is important to care and maintain it following these recommendations:

As part of any Pre Trip Preparation, or on an annual basis, it is recommended that a thorough visual inspection of the recovery point is carried out, making sure that all bolts and other components are torqued to the correct specification. Replace any components as necessary. This service can be performed by your local authorised ARB Stockist.

FITTING REQUIREMENTS

REQUIRED TOOLS FOR FITMENT OF PRODUCT:

BASIC TOOL KIT	TORQUE WRENCH
----------------	---------------

HAVE AVAILABLE THESE SAFETY ITEMS WHEN FITTING PRODUCT:

Protective eyewear	Hearing protection
--------------------	--------------------



NOTE: 'WARNING' notes in the fitting procedure relate to OHS situations, where to avoid a potentially hazardous situation it is suggested that protective safety gear be worn or a safe work procedure be employed. If these notes and warnings are not heeded, injury may result.

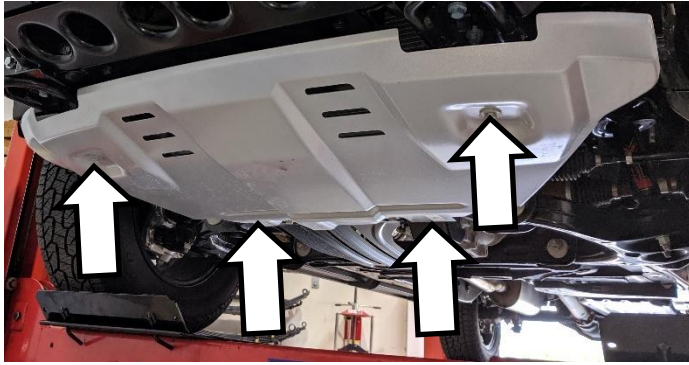
FASTENER TORQUE SETTINGS:

SIZE	Torque Nm	Torque lbft
M10	44	32
M12	77	57

PARTS LISTING

APPLICATION	PART NO.	QTY.	DESCRIPTION
RECOVERY POINT	4654940	1	WELD ASSY RECOVERY POINT
FASTEN RECOVERY TO STONE GUARD	6151321	1	NUT FLANGE SERRATED M10 x 1.5
SAFETY	2125484	1	RECOVERY POINT WARNING LABEL
	211512	1	OPERATOR INSTRUCTION CARD

FITTING PROCEDURE

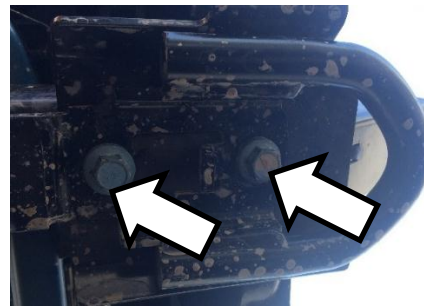


1. Remove factory stone guard from vehicle and set aside along with bolts.




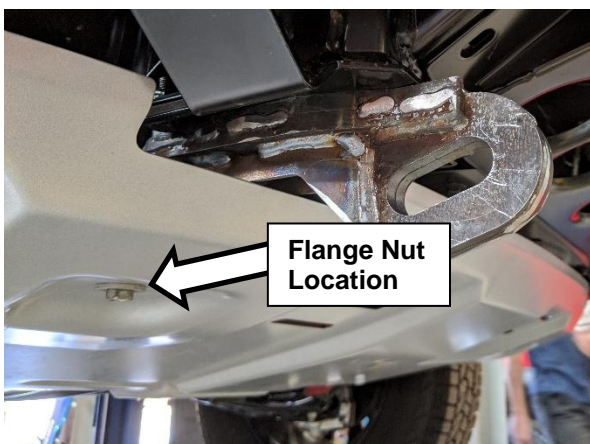
2. Remove factory tow hook from vehicle from whichever side the recovery point is being fitted to and discard.

Note: Retain bolts.



3. Fit recovery point to chassis as shown using bolts retained from Step 2.

 M12 - 77 Nm.



4. Re-fit factory stone guard removed previously in step 1 using bolts set aside as well as M10x1.5 flange nut supplied with kit.

 M10 - 44 Nm.



Label position with factory underpanel in conjunction with ARB bull bar



Label position with ARB Under Vehicle Protection in conjunction with ARB bull bar



Label position with factory bumper fitted

5. Position adhesive warning label as shown.

FITTED PRODUCT – RECOVERY POINT FORD RANGER USA

