



# OLD MAN EMU

## FITTING INSTRUCTIONS

# FK71

**Ford Superduty**  
**2008 On F250/350**  
**Brake line kit**

### HAND TOOLS REQUIRED

Ring / Open end Spanner set (Metric)  
Socket Set (Metric)  
Inc. 30mm and 24mm

### WORKSHOP TOOLS REQUIRED

None



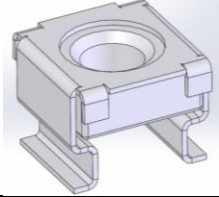
### OPTIONAL HAND TOOLS


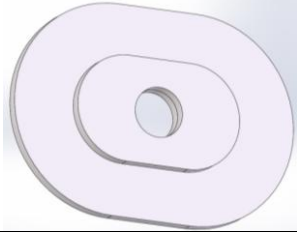
### OPTIONAL WORKSHOP TOOLS

N/A

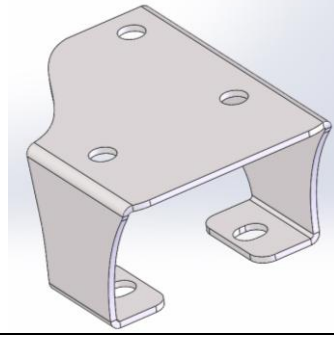
## KIT CONTENTS

- Brake line drop brackets
- ABS wire relocation side
- ABS wire relocation top

<b>Brake Line Drop Brackets</b>			
<b>PART NO.</b>	<b>QTY</b>	<b>DESCRIPTION</b>	<b>Picture</b>
3759350 L	1	Bracket Drop Brake line Front Left	
3759350 R	1	Bracket Drop Brake line Front Right	
6151302	2	Nut Cage M10	
6151045	2	Bolt M10 x 25mm	
4581048	2	Washer Spring M10	
4581040	2	Washer Flat M10	

<b>ABS wire relocation - side</b>			
<b>PART NO.</b>	<b>QTY</b>	<b>DESCRIPTION</b>	<b>Picture</b>
3194624	2	Plate ABS Wire Outside	
3194625	2	Plate ABS Wire Inside	
6151085	2	Bolt Cup Square M8 x 70	
61151547	2	Nut Nyloc M8	

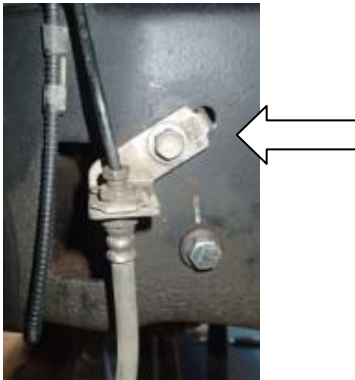
## ABS wire relocation - top

PART NO.	QTY	DESCRIPTION	Picture
3759368	2	Bracket ABS Wire Top	
6151560	4	Bolt M6 x 16mm	
6151549	4	Nut Nyloc M6	
4584327	8	Washer M6	

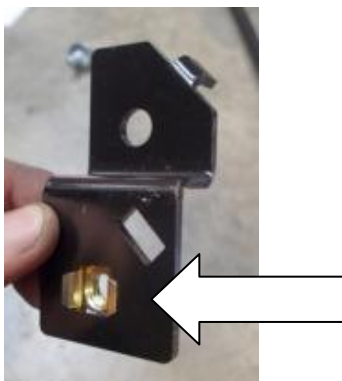
## Fitting Procedure

### BRAKE LINE DROP BRACKETS

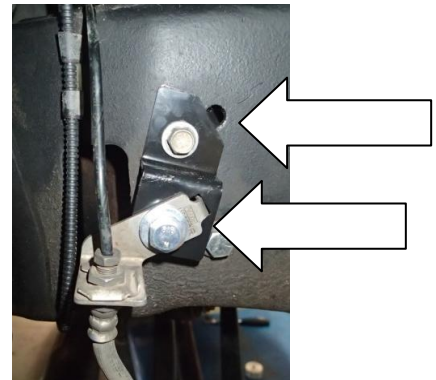
1. Remove upper brake line brackets fixed to side of chassis.



2. Insert cage nut (6151302) into newly supplied drop bracket (3759350L/R).



3. Mount OME Drop Bracket to chassis reusing OE M10 fastener, torque to 50 Nm. Remount OE brake line to OME Drop Bracket using M10 Bolt (6151045), spring and flat washer (4581048 and 4581040) torque to 50 Nm.



## ABS wire relocation - Side

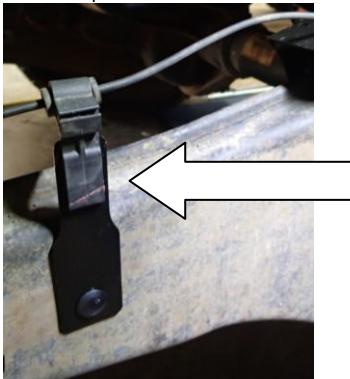
1. Insert ABS plate (3194624) on the outside of the radius arm, then insert ABS plate (3194625) on the inside of the radius arm



2. Use M8 x 75mm coach bolt (6151085) through plates and radius arm and fasten with M8 Nyloc nut.

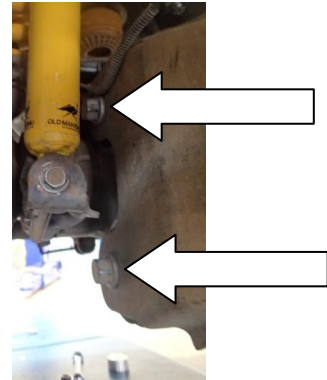


3. Remove original clip from the arm and insert into new relocation position as shown below.

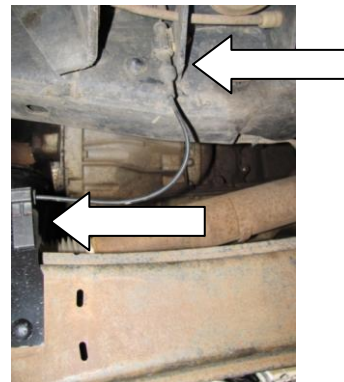


## ABS wire relocation - Top

1. Remove front lower shock bolt and push shock to the side to enable access to the 2 x M18 Bolts, Loosen M18 Bolts but do not remove.

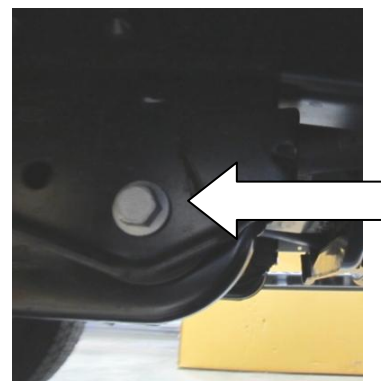


2. Disconnect ABS Plug or ABS clips on radius arm.

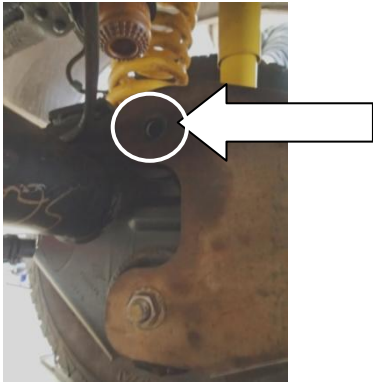


3. **CAUTION: The radius arms keep the axle in place underneath the vehicle, at all times at least one of two radius arms must be fully connected. Work only on one side at a time from this step on, failure to do so may event in serious injury.**

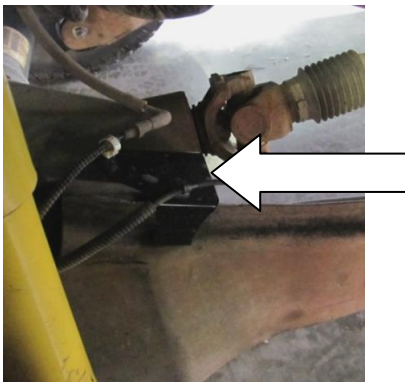
4. Where radius arm mounts to vehicle chassis loosen and remove M18 Fastener to disconnect radius arm, you may need to use heat to break down the chemical locking compound.



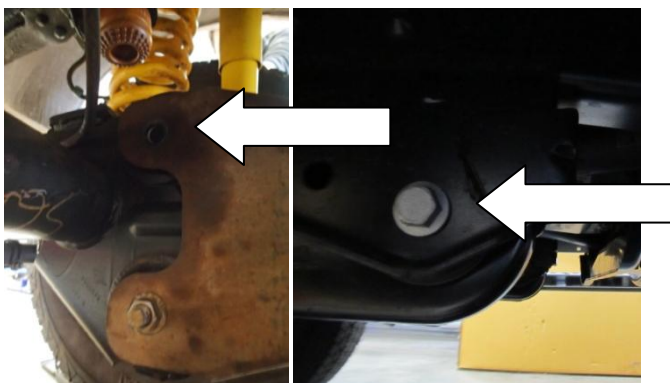
- Remove top M18 bolt of radius arm on axle end pivot radius arm to the ground.



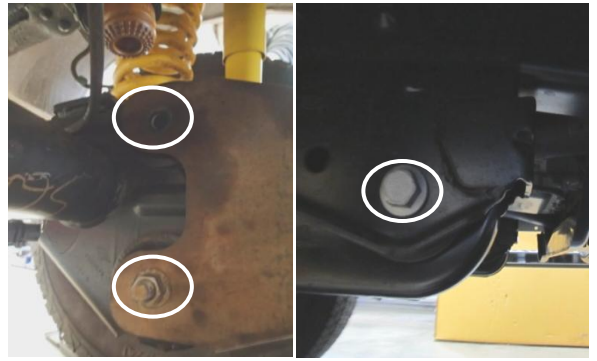
- Mount ABS wire top bracket (3759368) on top of radius arm, ensure cutaway feature on bracket is pointing toward the front of the vehicle. Fix using M6 x 16mm bolts (6151560), washers (4584327) and nyloc nut(6151549). Torque M6 bolt to 10Nm. Press clips into new bracket.



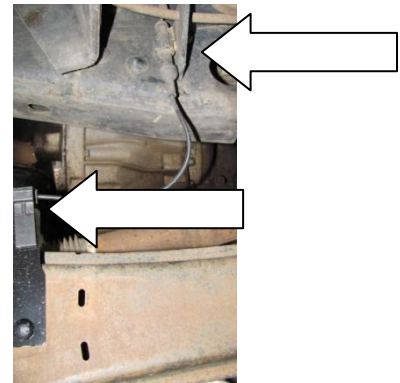
- Insert top M18 bolt of radius arm on axle end loosely, then lever radius arm into fixed mount on vehicle chassis and use other M18 bolt to fix, you may need to push/pull the wheel to get the holes to align the fastener with the mount hole.



- Torque all 3 x M18 Fasteners grade 10.9 to 350 Nm.



- Reconnect ABS plug and clip.



- Repeat steps 4 – 9 for other side

- Tighten lower shock mounts on both sides. Torque to 100Nm.

