

# FITTING INSTRUCTIONS

**BP5160018L & BP5160018R**

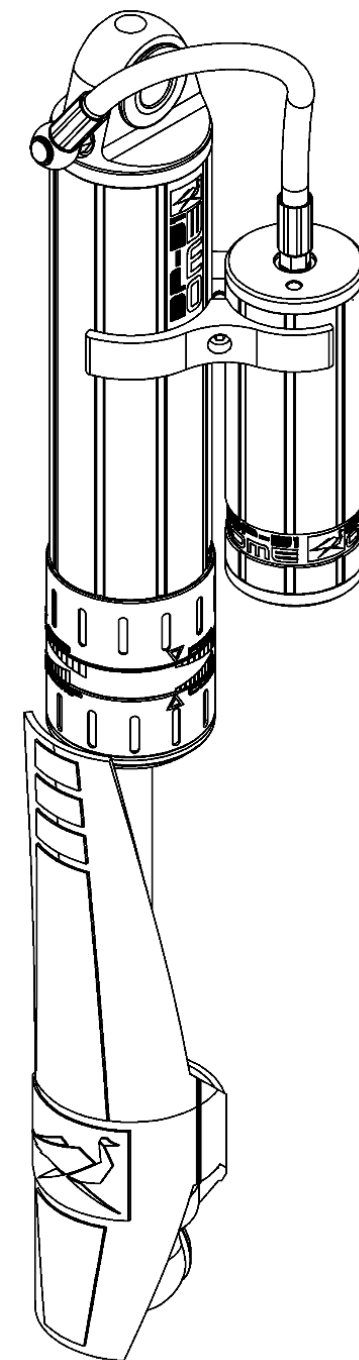
**BP5160051L & BP5160051R**

**TOYOTA HILUX 2015 ON REAR**

## WARNING

- ◆ This product must be installed exactly as per these instructions using only the hardware supplied.
- ◆ In the event of damage to any suspension component, contact your nearest authorised ARB stockist. Repairs or modifications to the suspension system components must not be attempted.
- ◆ Do not use this product for any vehicle make or model, other than those specified by ARB.
- ◆ Do not remove labels from suspension components.
- ◆ This product or its fixing must not be modified in any way.
- ◆ The installation of this product may require the use of specialized tools and/or techniques
- ◆ It is recommended that this product is only installed by trained personnel
- ◆ These instructions are correct as at the publication date. ARB Corporation Ltd. cannot be held responsible for the impact of any changes subsequently made by the vehicle manufacturer
- ◆ During installation, it is the duty of the installer to check correct operation/clearances of all components
- ◆ Work safely at all times

**Note:** These fitting instructions should be read in conjunction with the vehicle workshop manual.



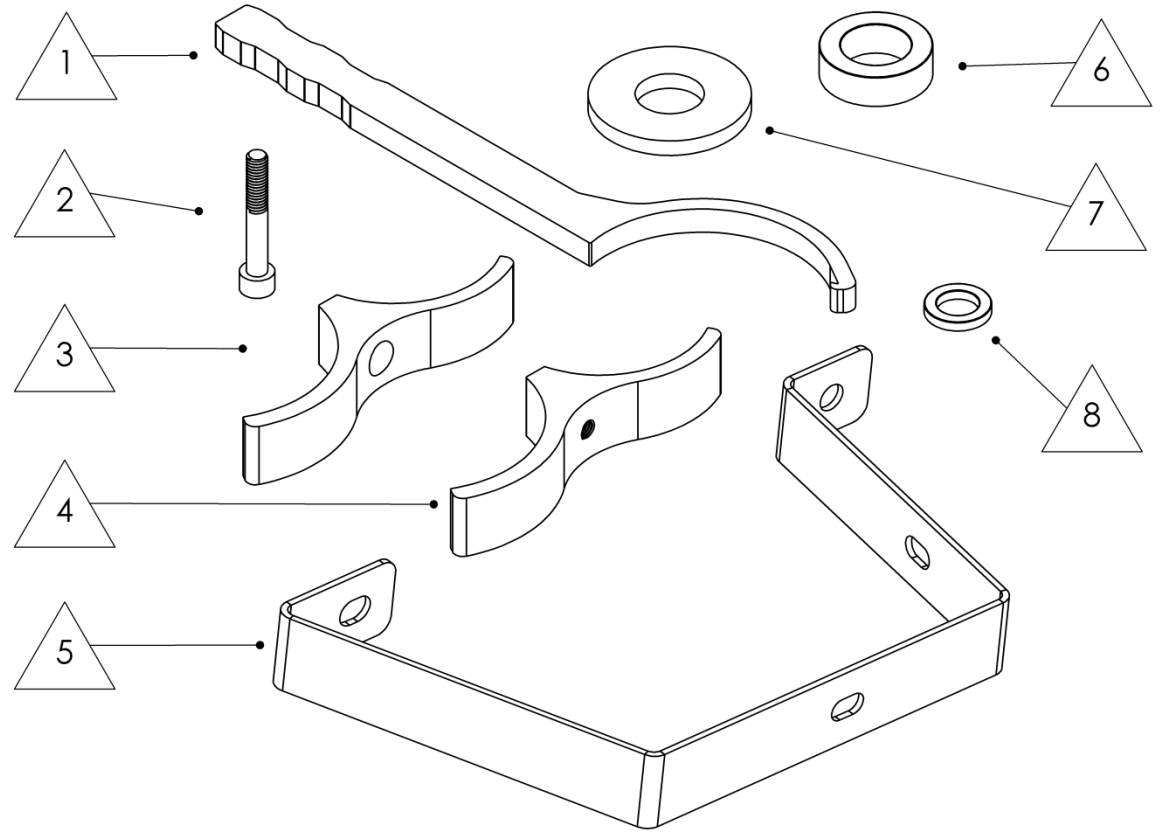
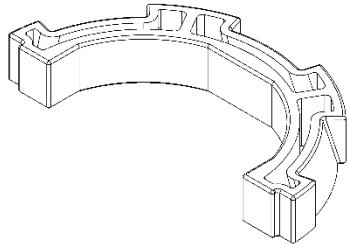
REVB

**FITTING KIT CONTENTS – VM80010019**

Item	Description	Qty	Spare Part Number
1	ADJUSTER TOOL	1	VC10010071SP
2	FASTENER: 6mm x 40mm	2	VD60020002SP
3	RESI. CLAMP HALF	2	VE10010001SP
4	RESI. CLAMP THREADED	2	VE10010002SP
5	MOUNT BRACKET REAR LOOM	1	VF60050019SP
6	WASHER: SPACER (20x32x10mm)	2	VE70020002SP
7	WASHER: SPACER (19x46x5mm)	2	VE70020010SP
8	WASHER: SPACER (12x19x3mm)	6	VE70020001SP

**Shaft Guard Retainers (supplied with damper)**

Spare part number - VD31000003SP



## DAMPER PREPARATION

Before fitment, the Reservoir needs to be clamped to the shock absorber body.

Left and right setups are different. Refer to diagrams for orientation.

### LEFT

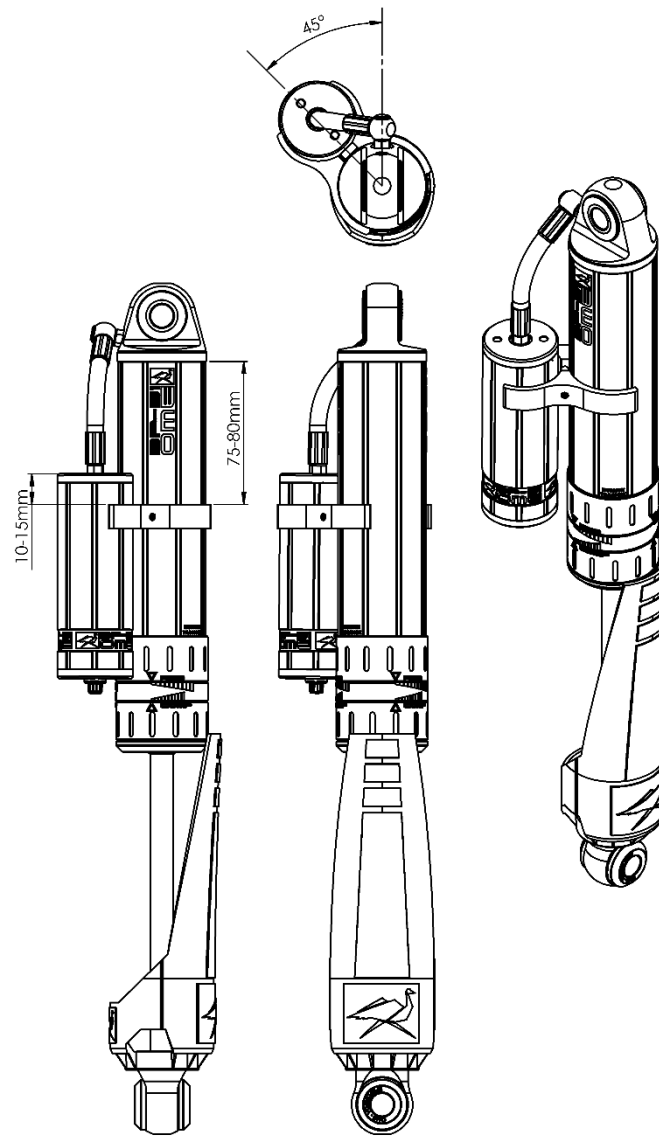
The left side has the shorter hose and is mounted behind the axle when installed on the vehicle.

### RIGHT

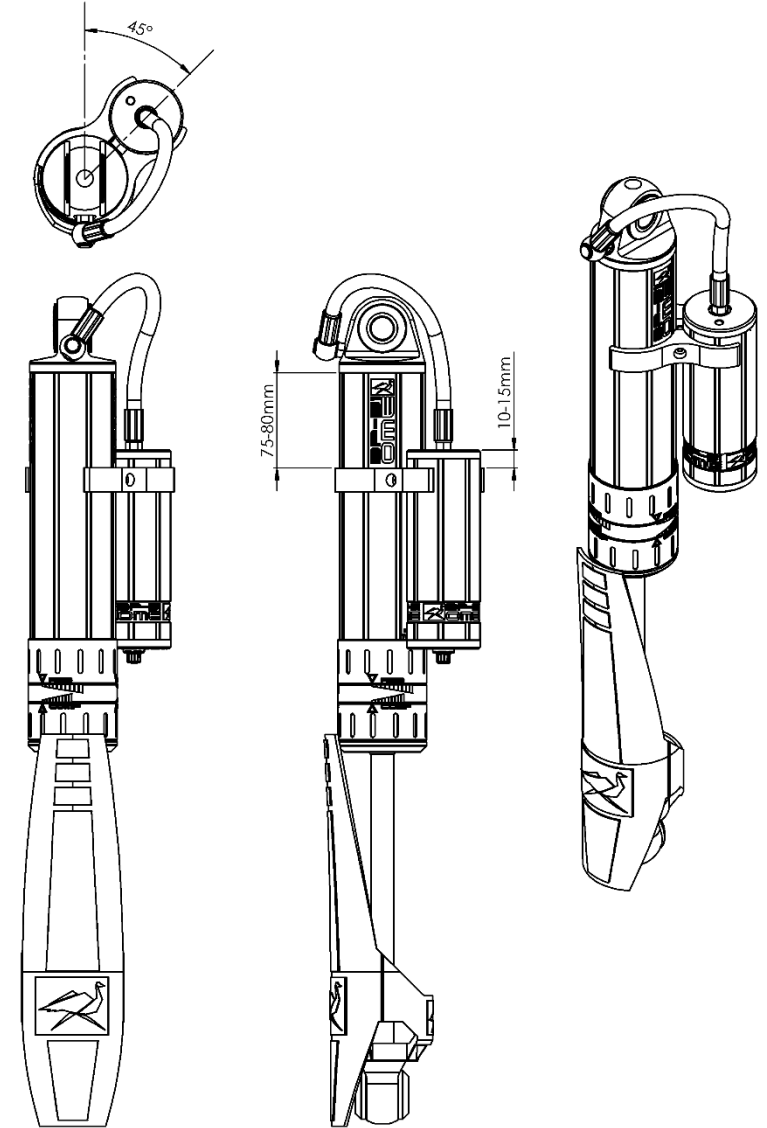
The right hand side has the longer hose and is mounted in front of the axle.

Secure the shaft guard after the damper is fitted to the vehicle. Refer to page 6.

## LEFT



## RIGHT



## MOUNTING SEQUENCE

Remove old dampers from vehicle.

The BP-51 needs to be fitted with the suspension in droop.

Mount the BP-51 dampers using the hardware in the sequence as shown in the diagram.

### LEFT

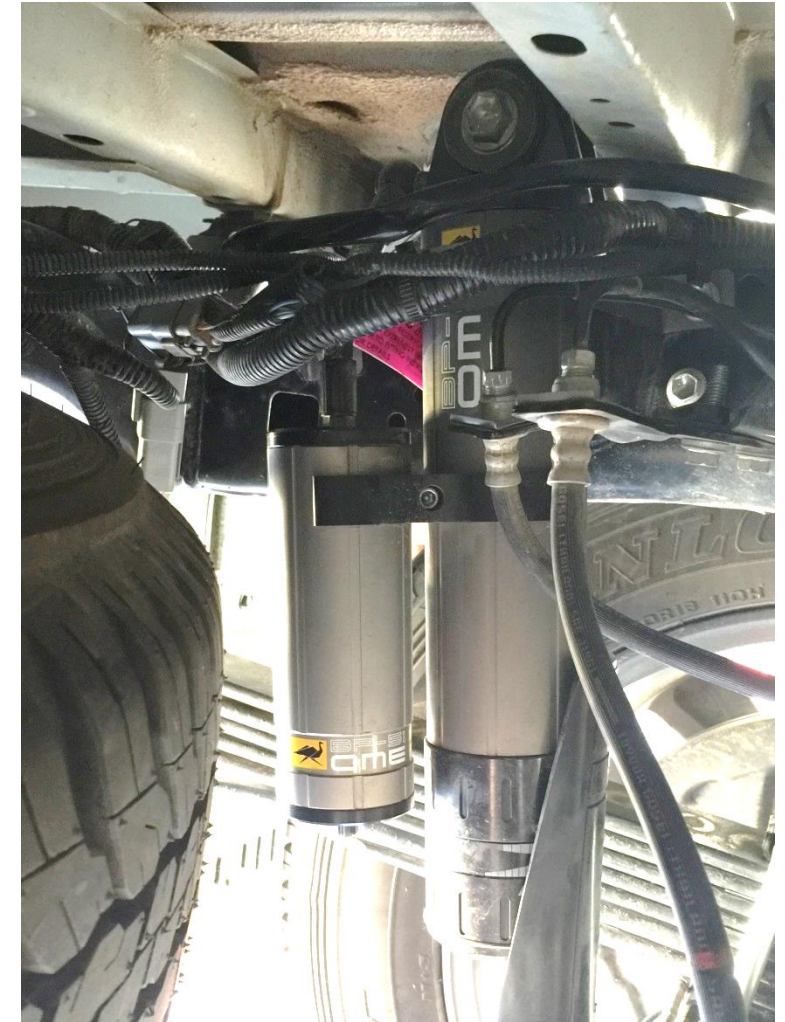
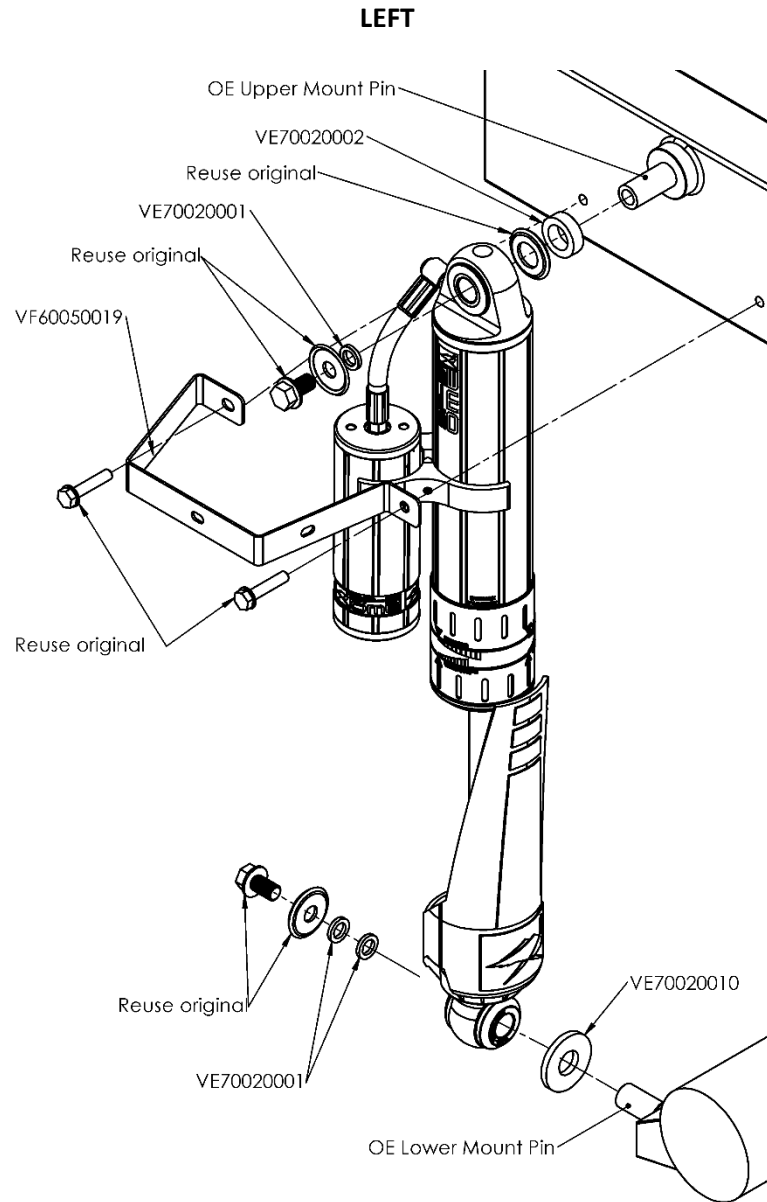
Fit the top mount in the sequence shown, you will need to replace an OE loom bracket attached to the inside of the chassis rail with supplied VF60050019 bracket, reuse plastic fixings to refasten loom.

Droop the wheel to secure the bottom mount using hardware as shown.

Ensure the hoses are clear of any obstructions and have no kinks. The clamp should never be fitted lower on the damper body than specified as it may obstruct the path of the stone guard at full compression.

Secure top and bottom mounting fasteners to 98 N.m (72 ft.lbf).

*Refer to p6 for securing shaft guard.*

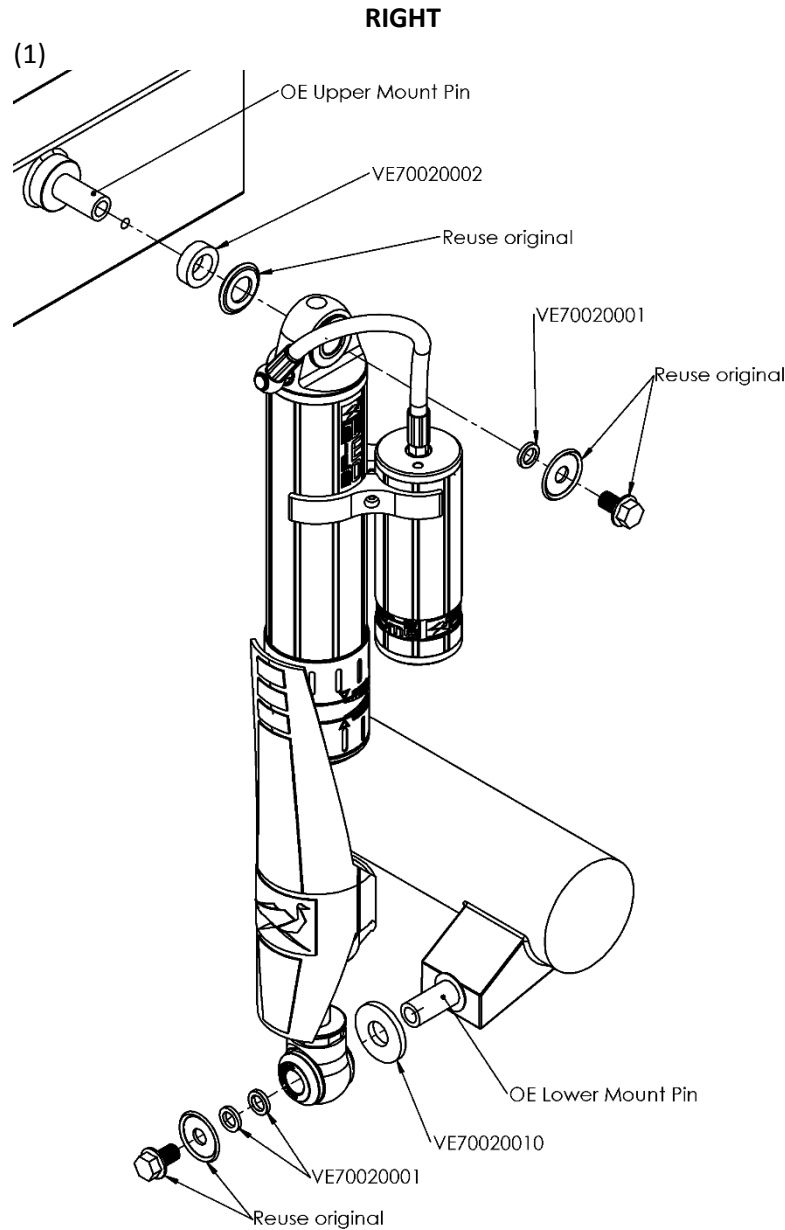


**RIGHT**

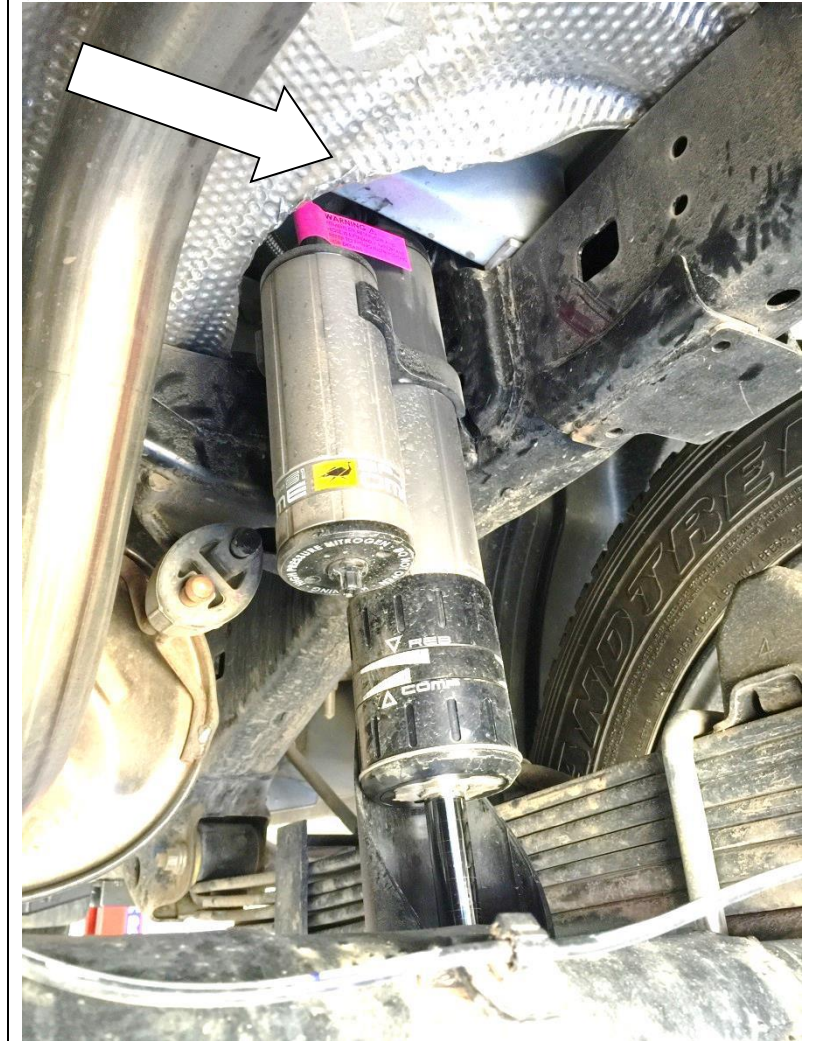
Fit the top mount first in the sequence shown (1), some trimming of the heat shield may be required as shown to create clearance around the hose as shown (2).

Drop the wheel to secure the bottom mount as shown.(1)  
Torque as per LHS.

As tray fitments may vary, some fine tuning of the clamp position may be required on the RHS to ensure the hose clears the underside of the tray.



(2)





## DAMPER PREPARATION

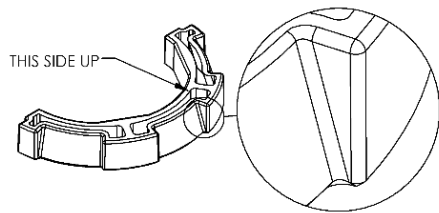
### SECURING SHAFT GUARDS

The shaft guards are designed to protect the shaft from stones thrown from the front wheels and are mounted to the front side of the damper.

It is easiest to secure the shaft guards before the dampers are fitted to the vehicle.

Please follow steps 1-3.

1. Fit the two retainers to the eyelet as shown. Note the orientation.

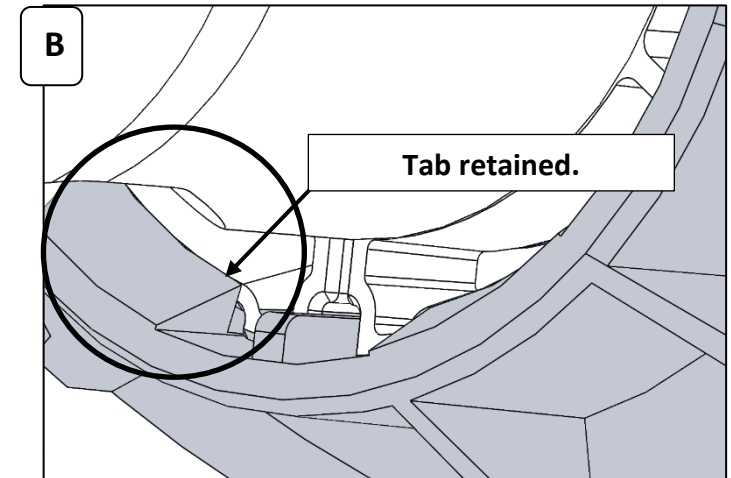
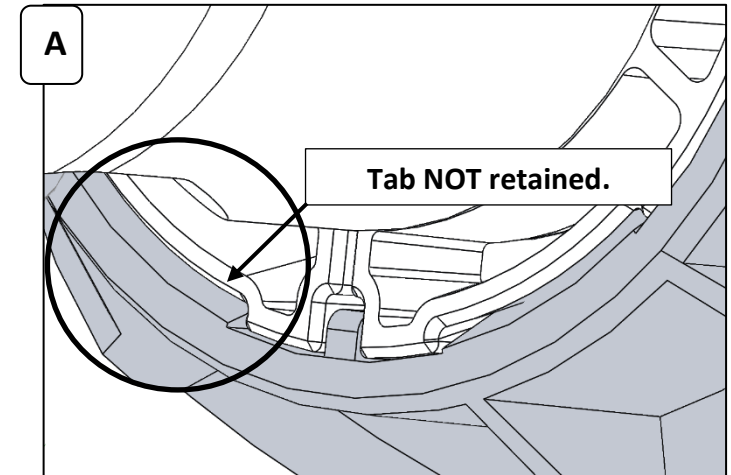
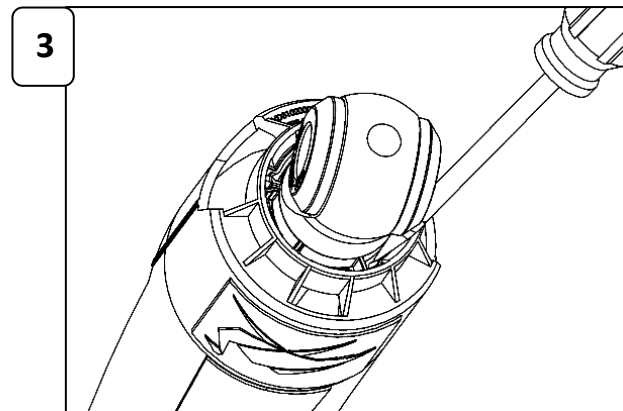
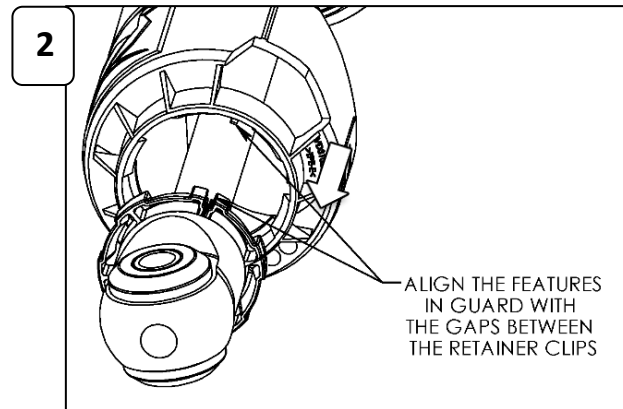
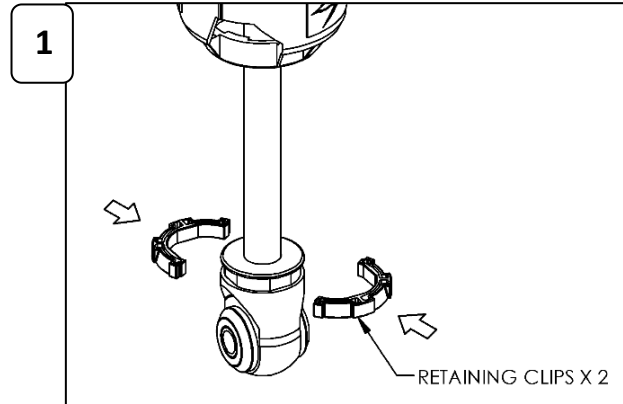


2. There are features on the shaft guard that locate in the gaps between the two retainers. Align the guard with these gaps and firmly pull the shaft guard down over the retainers to secure in place.

3. Check retainers are completely secured by guard. Use a flat blade screwdriver to poke retainers under tabs on guard if required. Refer to pictures (A) and (B) for correct fitment.

**IMPORTANT: Ensure ALL tabs are fully retained.**

**NOTE: Ensure the stone guard does not touch the brake hose once installed**



**IMPORTANT: Ensure ALL tabs are fully retained**

## DAMPING ADJUSTMENT

These dampers have been set in the factory to be used for a vehicle with little or no load. If your load or accessory fitment differs, use the table below as a guide for recommended compression (Comp) and rebound (Reb) adjuster settings. Refer to the Owner's Manual for more information.

Part Number	Rear Pay Load (kg)	Compression	Rebound
BP5160018	0 - 200	0-4	0-4
	200 - 400	2-6	2-6
	400 - 600	4-8	4-8
	600-800	6-10	6-10
BP5160051	400-600	2-6	0-6
	600 +	4-8	6-10

## SPECIFICATIONS

BP5160026 & BP5160053	Extended Length	400 mm
	Compressed Length	645 mm

## SPARE PARTS

Refer to Service and Parts Manual section:

- For BP5160026 see **BP-51 S&P 3.1-BP5160018 L&R**
- For BP5160053 see **BP-51 S&P 3.1-BP5160051 L&R**

