

ROUGH COUNTRY

SUSPENSION SYSTEMS®

SRB151977

GM 2015-UP Colorado/Canyon HD2 Steps

Thank you for choosing Rough Country for all your vehicle needs.

Please read instructions before beginning installation. Check the kit hardware against the kit contents shown below. Be sure you have all needed parts and know where they go.

If question exist, please call us @1-800-222-7023. We will be happy to answer any questions concerning this product.

Check all fasteners for proper torque. Check to ensure for adequate clearance between all components.

Periodically check all hardware for tightness.

KIT CONTENTS:

Driver Side Step Brackets x3
Pass Side Step Brackets x3
Driver Side Step x1
Pass Side Step x1
6mm Double Bolt Plates X6

TOOLS NEEDED:

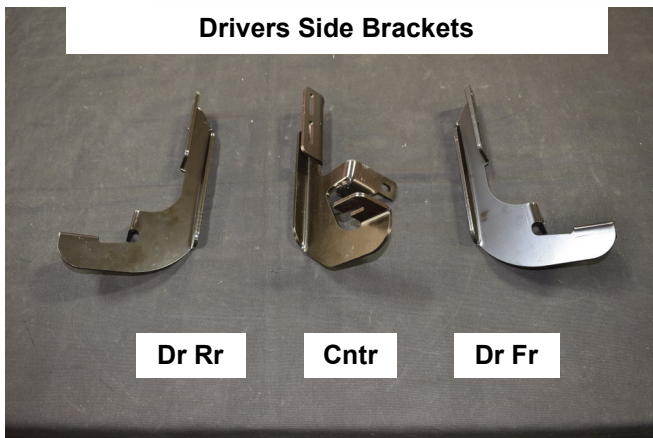
10mm Wrench or Socket
13mm Wrench or Socket

HARDWARE INCLUDED:

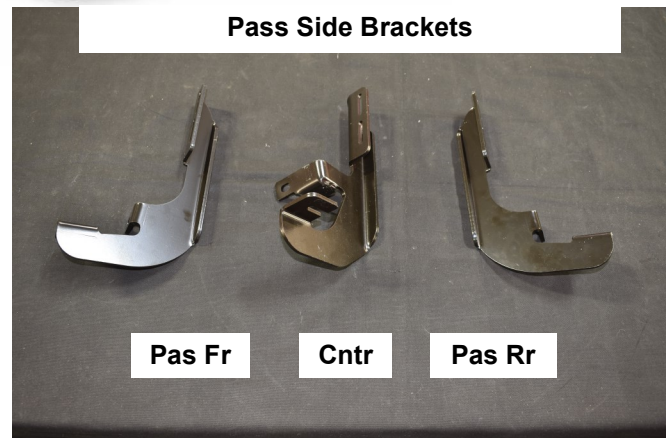
8mm Flag Bolts x2
6mm Flat Washers x12
6mm Hex Nuts x12
6mm Lock Washer x12
8mm Body Clips X10
8mm-1.25 x 30 Hex Bolts x10
8mm Hex Nut x4
8mm Flat Washers x12
8mm Lock Washers x12



Drivers Side Brackets

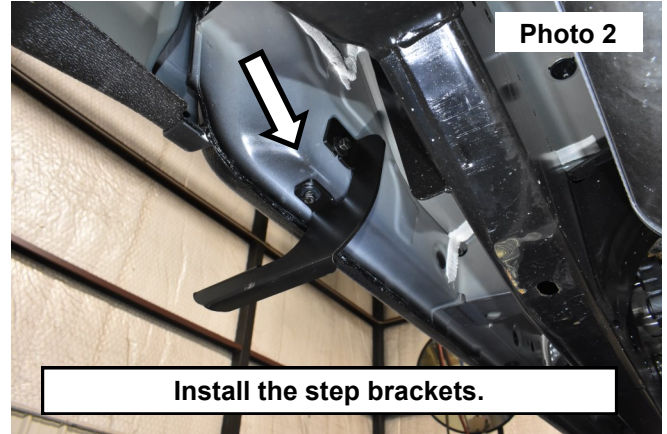
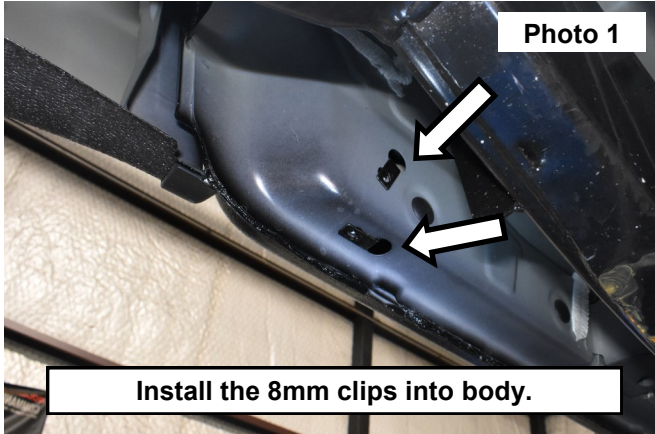


Pass Side Brackets

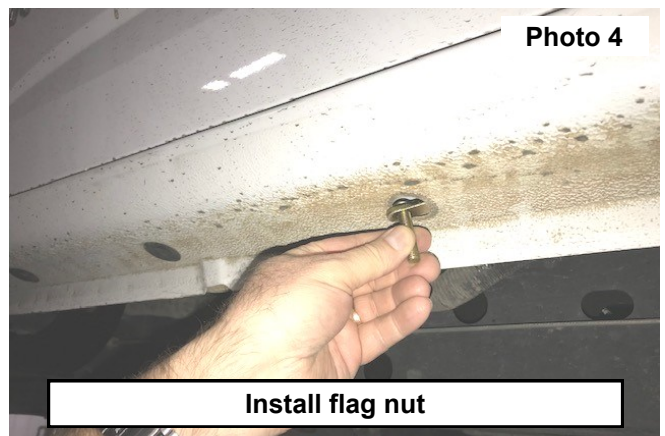


INSTALLATION INSTRUCTONS

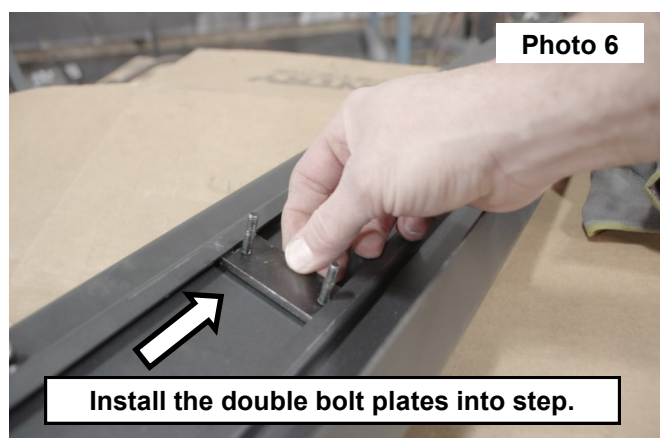
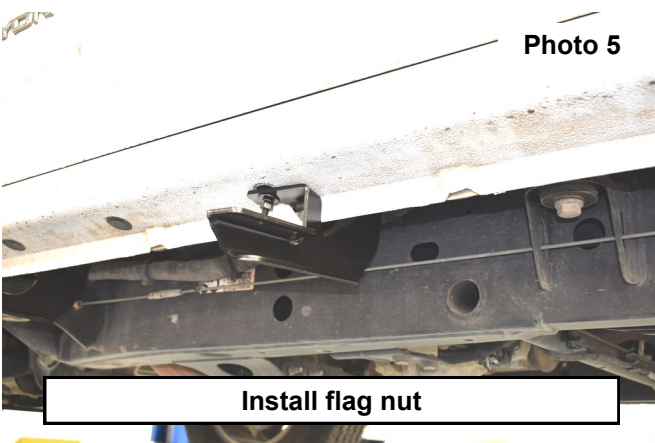
1. Remove any OE plugs covering the holes in the step bracket locations in the bottom of the cab shown in the picture on the 1st page. The outer most locations and the center will be used as shown on the cab for mounting points.
2. Install the body clips into the cab at the 3 mounting points, 2 clips at each mounting point as shown in **Photo 1** with the exception of the center lower mounting point which will use the supplied threaded flag nut on the bottom of the cab.
3. Locate the driver side step brackets shown in Photo on 1st page.
4. Install the front and rear step mounting brackets onto the clips installed on the bottom of the cab. Secure using the supplied 8mm -1.25 x 30mm hex head bolt, 8mm lock washer and 8mm flat washer. Tighten using a 13mm wrench. **See Photo 2.**



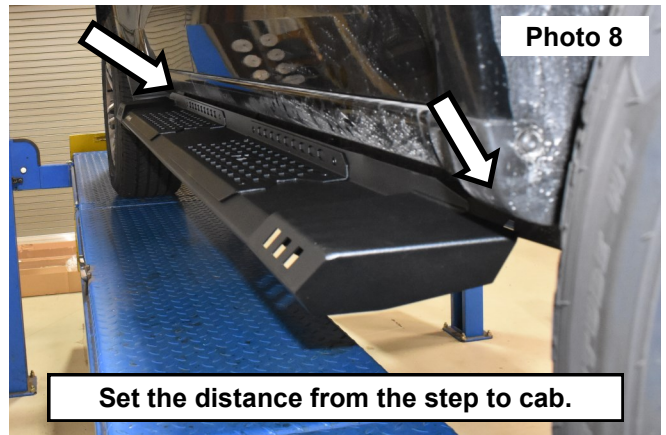
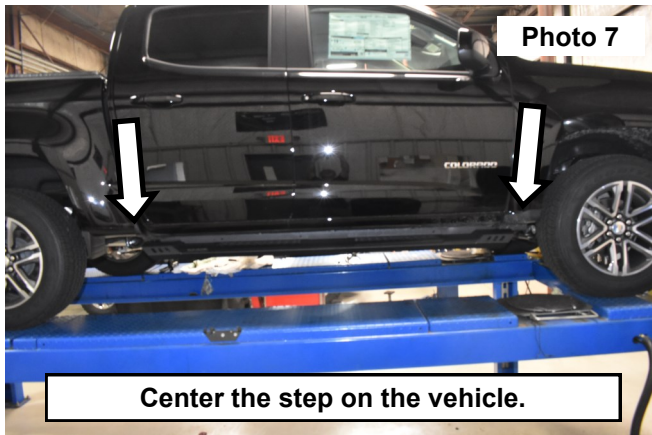
5. Install the supplied flag nuts in the body for the center bracket as shown. Note: It may be necessary to slightly pry down one side of the mounting hole to allow the flag nut to be installed. **See Photo 5 & 6.**
6. Install the center bracket and secure with the 8mm flat washer, lock washer and nut on the flag nut and 8mm bolt,



- lock washer and flat washer on the upper hole with the body clip. **See Photo 5.**
7. Install the (3) 6mm double bolt plates into the channels on the bottom of the step. **See Photo 6.**
8. Install the bolt plate studs into the 3 brackets on the vehicle then secure each mounting point using the supplied



- 6mm washer and 6mm nylock nuts. **See Photo 6.**
9. Adjust the step to the desired location front to rear on the vehicle. **See Photo 7.**
 10. Set the desired gap between the step and the cab then tighten the (6) 6mm nylock nuts using a 10mm wrench. **See Photo 8.**
 11. Locate the passenger side step brackets using the picture on the 1st page as a reference and repeat steps 1-10 on the passenger side of the vehicle.
 12. Recheck all hardware and tighten as needed according to the specs below.



Torque Specs:

Size	Grade 5	Grade 8	Size	Class 8.8	Class 10.9
5/16"	15 ft/lbs	20ft/lbs	6MM	5ft/lbs	9ft/lbs
3/8"	30 ft/lbs	35ft/lbs	8MM	18ft/lbs	23ft/lbs
7/16"	45 ft/lbs	60ft/lbs	10MM	32ft/lbs	45ft/lbs
1/2"	65 ft/lbs	90ft/lbs	12MM	55ft/lbs	75ft/lbs
9/16"	95 ft/lbs	130ft/lbs	14MM	85ft/lbs	120ft/lbs
5/8"	135ft/lbs	175ft/lbs	16MM	130ft/lbs	165ft/lbs
3/4"	185ft/lbs	280ft/lbs	18MM	170ft/lbs	240ft/lbs



By purchasing any item sold by Rough Country, LLC, the buyer expressly warrants that he/she is in compliance with all applicable, State, and Local laws and regulations regarding the purchase, ownership, and use of the item. It shall be the buyers responsibility to comply with all Federal, State and Local laws governing the sales of any items listed, illustrated or sold. The buyer expressly agrees to indemnify and hold harmless Rough Country, LLC for all claims resulting directly or indirectly from the purchase, ownership, or use of the items.

