



TOYOTA 2022 Tundra HD2 Crew Cab Steps

Thank you for choosing Rough Country for all your vehicle needs.

Please read instructions before beginning installation. Check the kit hardware against the kit contents shown below. Be sure you have all needed parts and know where they go.

If question exist, please call us @1-800-222-7023. We will be happy to answer any questions concerning this product. Check all fasteners for proper torque. Check to ensure for adequate clearance between all components. Periodically check all hardware for tightness.

KIT CONTENTS:

- Step Rails x2
- Driver Side Front Bracket x1
- Driver Side Center Bracket x1
- Driver Side Rear Bracket x1
- Pass Side Front Bracket x1
- Pass Side Center Bracket x1
- Pass Side Rear Bracket x1

TOOLS NEEDED:

- 10mm Wrench or Socket
- 13mm Wrench or Socket

HARDWARE INCLUDED:

- Double Bolt Plate x6
- 6mm x30mm Hex Bolt x12
- 6mm Flat Washers x12
- 6mm Lock washers x12
- 6mm Hex Nuts x12
- 6mm Lock Nuts x12
- 8mm Hex Bolt x12



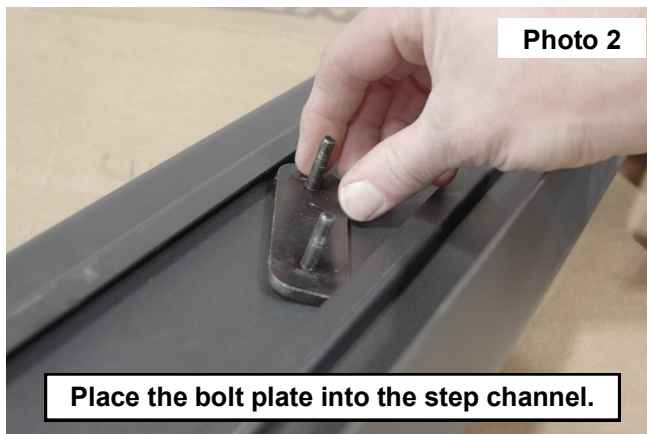
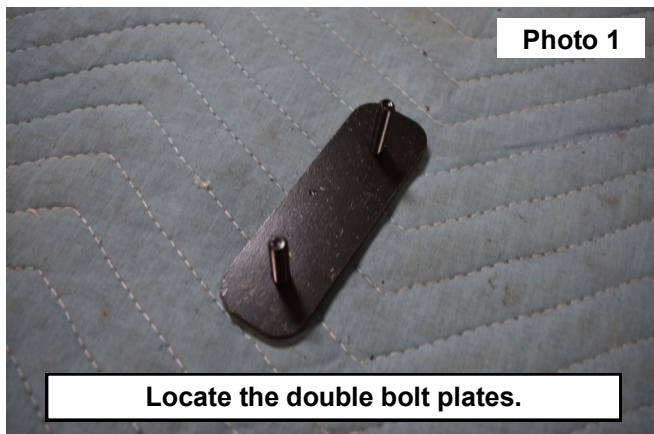
Torque Specs:

Size	Grade 5	Grade 8	Size	Class 8.8	Class 10.9
5/16"	15 ft/lbs	20ft/lbs	6MM	5ft/lbs	9ft/lbs
3/8"	30 ft/lbs	35ft/lbs	8MM	18ft/lbs	23ft/lbs
7/16"	45 ft/lbs	60ft/lbs	10MM	32ft/lbs	45ft/lbs
1/2"	65 ft/lbs	90ft/lbs	12MM	55ft/lbs	75ft/lbs
9/16"	95 ft/lbs	130ft/lbs	14MM	85ft/lbs	120ft/lbs
5/8"	135ft/lbs	175ft/lbs	16MM	130ft/lbs	165ft/lbs
3/4"	185ft/lbs	280ft/lbs	18MM	170ft/lbs	240ft/lbs

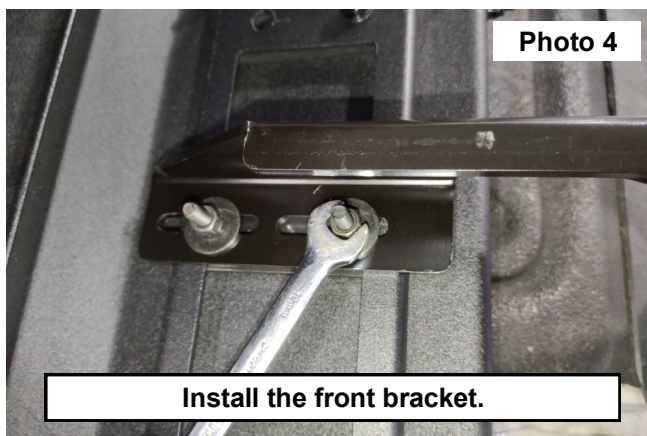
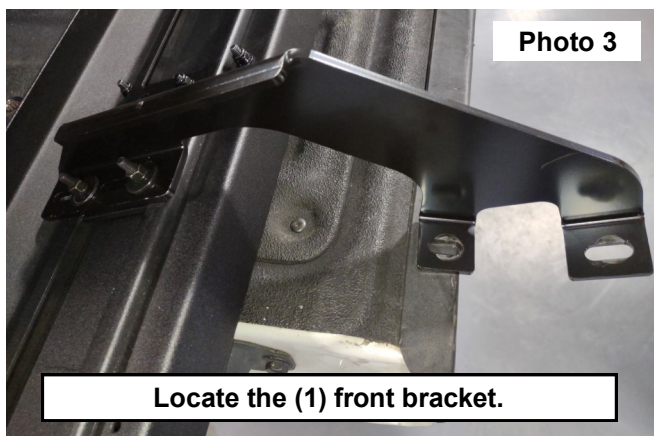


INSTALLATION INSTRUCTONS

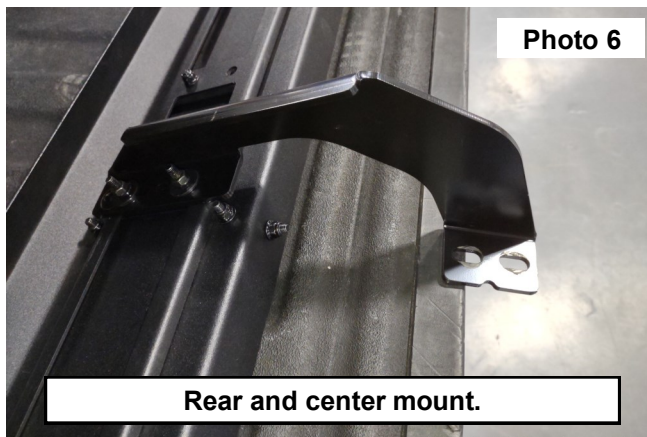
1. Locate (3) bolt plates. **See Photo 1.**
2. Install the (3) bolt plates into the channel of the step. **See Photo 2.**



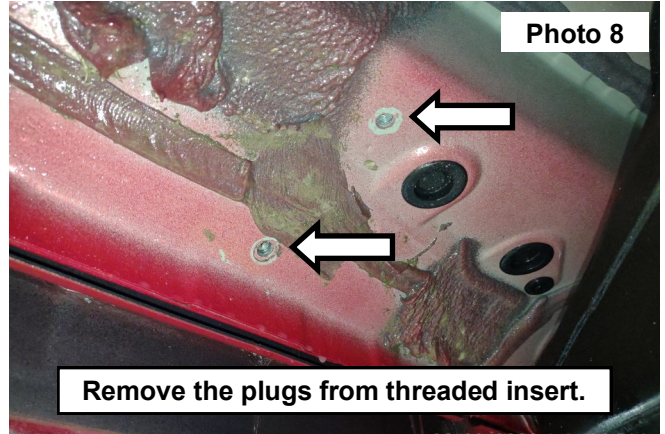
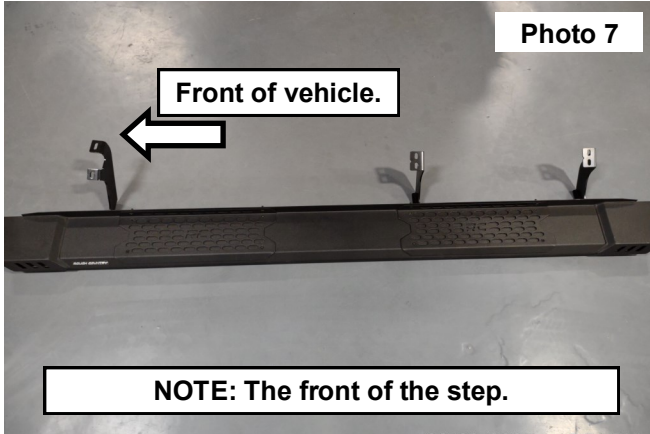
3. Locate the (1) front bracket. Driver side shown. **See Photo 3.**
4. Place the bolt plate studs into the slots of the step mounting bracket. Secure the step bracket and bolt plate using (2) of the supplied 6mm flat washers (2) 6mm lock washers and (2) 6mm nuts for each of the (3) mounting brackets. **See Photo 4.**



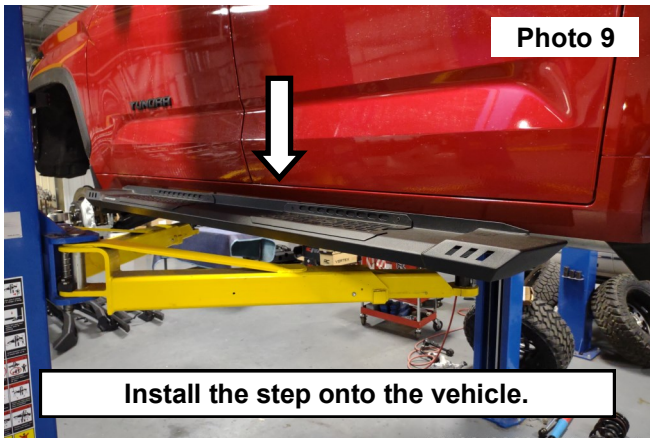
5. Repeat the installation of the (2) bolt plates in the slot for the center and rear step mounting brackets. **See Photo 5.**
6. Install the slots of the center and rear brackets onto the bolt plate studs installed in the step. Secure the step mounting bracket and bolt plate using (2) of the supplied 6mm flat washers (2) 6mm lock washers and (2) 6mm nuts for each of the (3) mounting brackets. **See Photo 6.**



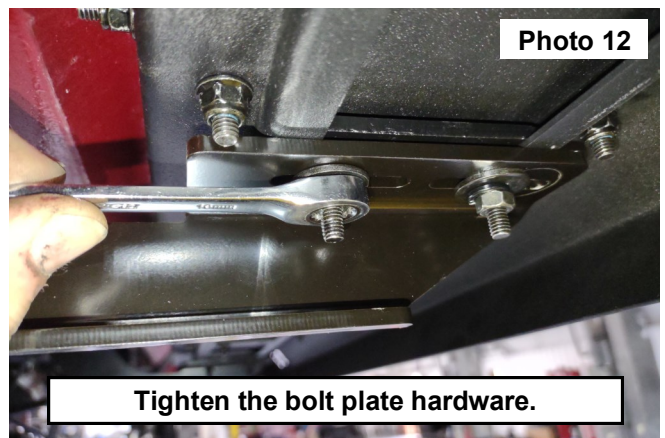
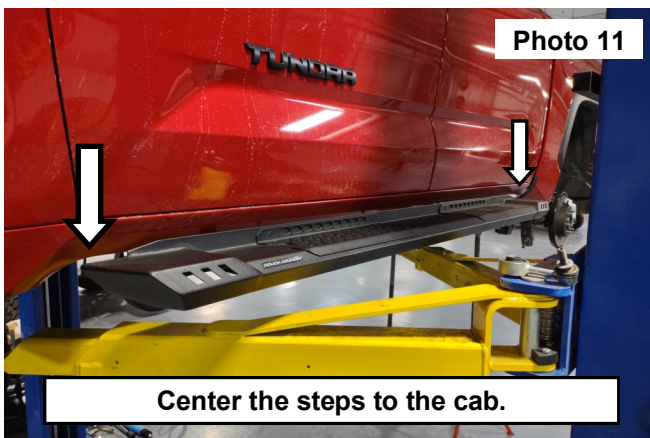
- Step and brackets show with the front of the step facing the left of the photo. **See Photo 7.**
- Locate the threaded mounting holes in the cab of the vehicle. Remove the OE Plugs from the holes if needed. **See Photo 8.**



- Support the step and place it onto the vehicle and align the mounting holes. **See Photo 9.**
- Secure the step using (2) of the supplied bolts in the step bracket into the cab of the vehicle. **See Photo 10.**



- Center the steps to the desired position on the cab. **See Photo 11.**
- Tighten the (2) nuts to secure the double bolt plate on each of the three mounting brackets using a 10mm wrench or socket. **See Photo 12.**





By purchasing any item sold by Rough Country, LLC, the buyer expressly warrants that he/she is in compliance with all applicable, State, and Local laws and regulations regarding the purchase, ownership, and use of the item. It shall be the buyers responsibility to comply with all Federal, State and Local laws governing the sales of any items listed, illustrated or sold. The buyer expressly agrees to indemnify and hold harmless Rough Country, LLC for all claims resulting directly or indirectly from the purchase, ownership, or use of the items.

