

Thank you for choosing Rough Country.

Please read instructions before beginning installation. Check the kit hardware against the parts list. Be sure you have all needed parts and know where they go. Also, please review the tools needed list and make sure you have all of the needed tools.

Kit Hardware:

- 6-Step Brackets
- 6-Flag Nuts
- 18-8mm Flat Washers
- 18-8mm Lock Nuts
- 12-6mm Flat Washers
- 12-6mm Lock Washers
- 12-6mm Hex Nuts

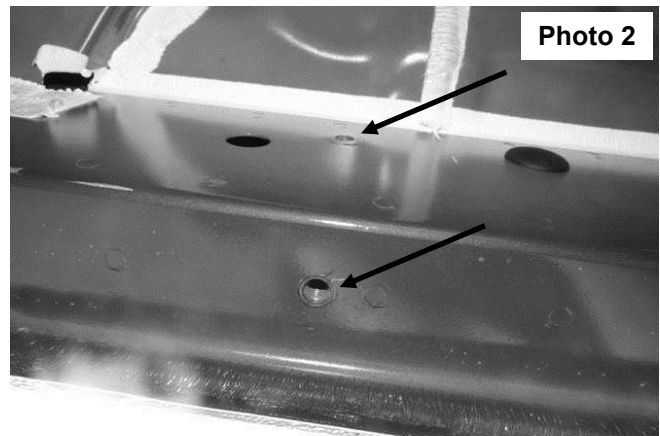
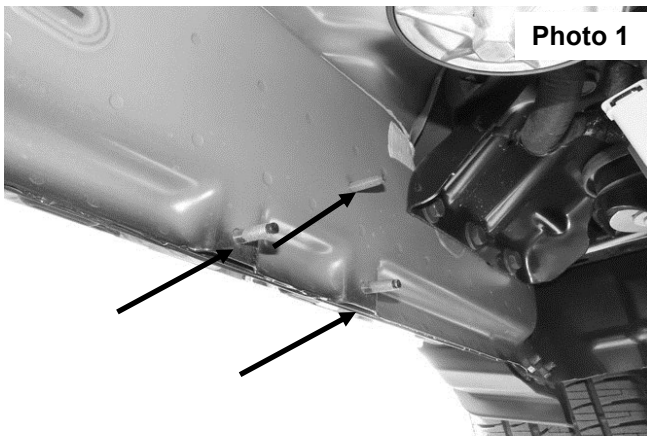


Tools Needed:

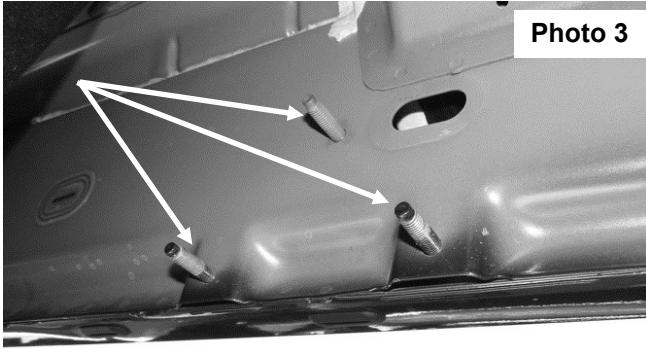
- 10mm Socket
- 10MM Wrench
- 13mm Socket
- 17mm Socket
- 17mm Wrench
- 18mm Socket
- Ratchet
- Torque Wrench

INSTALLATION INSTRUCTIONS

1. Start the installation under the driver side of the vehicle. Locate the three front factory studs along the inner side of the body panel. **See Photo 1.** Note: it is recommended to clean the studs first before installing brackets to remove paint buildup or road debris.
2. Locate mounting bracket. Note: All mounting brackets are universal and will fit left or right side.
3. Attach the Mounting bracket to the three factory studs with supplied 8mm Flat Washers and 8mm Nylon Lock Nuts, **See Photo 2.** Leave brackets loose at this time.

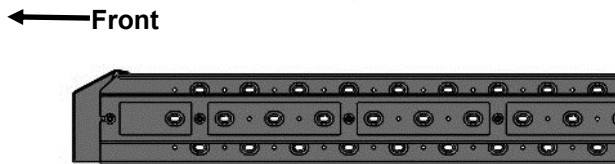


4. Install the mounting brackets in the center and rear mounting locations along the body panel securing with the supplied 8mm flat washers and 8mm lock nuts. **See Photo 3 & 4.**

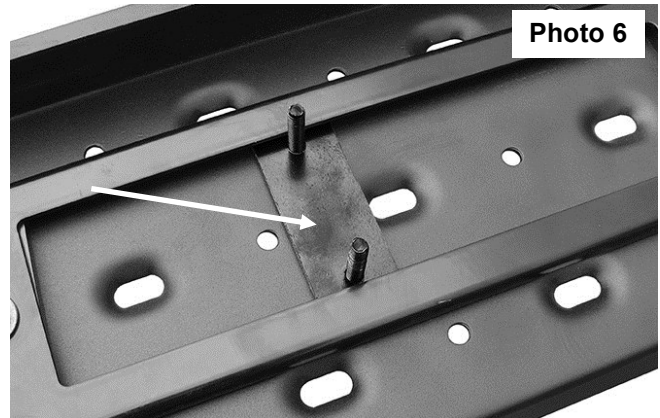


5. Carefully unwrap and select the driver side running board. **See Photo 5.** Place the Running Board on top of the brackets taking care to not slide the running board on the brackets. Damage to the finish may result.
6. Locate the channel opening in the bottom of the running board. Install the flag nuts in the step as shown in **Photo 6** into the bottom channel of the running board closest to the body mounted brackets.

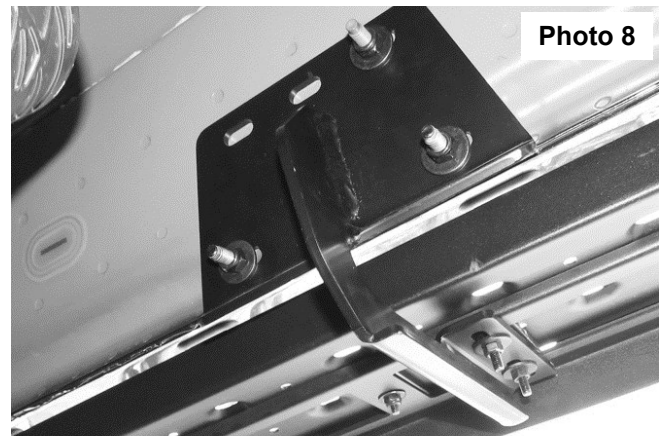
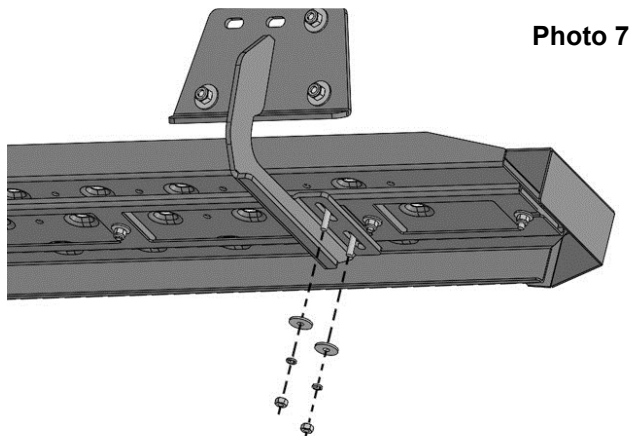
Photo 5



Driver Side Board shown



7. Lift the running board up and guide the studs through the mounting brackets.
8. Attach the running board to all three mounting brackets with 6mm Flat Washers, 6mm Lock Washers and 6mm Hex Nuts. **See Photo 7 & 8.**
9. Tighten the mounting hardware using a 10mm socket / wrench.
10. Repeat for the opposite side.





Torque Specs

Thread Size	Wrench Size	Torque Spec
6mm	10mm	8 ft/lb
8mm	13mm	18 ft/lb
10mm	17mm	37 ft/lb
12mm	18mm	65 ft/lb

By purchasing any item sold by Rough Country, LLC, the buyer expressly warrants that he/she is in compliance with all applicable , State, and Local laws and regulations regarding the purchase, ownership, and use of the item. It shall be the buyers responsibility to comply with all Federal, State and Local laws governing the sales of any items listed, illustrated or sold. The buyer expressly agrees to indemnify and hold harmless Rough Country, LLC for all claims resulting directly or indirectly from the purchase, ownership, or use of the items.

