

### Chevy 2014-18 Forged Tow Hooks

Thank you for choosing Rough Country for all your vehicle needs.

Please read instructions before beginning installation. Check the kit hardware against the kit contents shown below. Be sure you have all needed parts and know where they go.

If question exist, please call us @1-800-222-7023. We will be happy to answer any questions concerning this product. Check all fasteners for proper torque. Check to ensure for adequate clearance between all components. Periodically check all hardware for tightness.

**KIT CONTENTS:**  
 Driver Tow Hook x1  
 Passenger Tow Hook x1

**TOOLS NEEDED:**  
 18mm Wrench or Socket

**HARDWARE INCLUDED:**  
 12mm -1.75 x 120mm x1  
 12mm Flat Washer x1



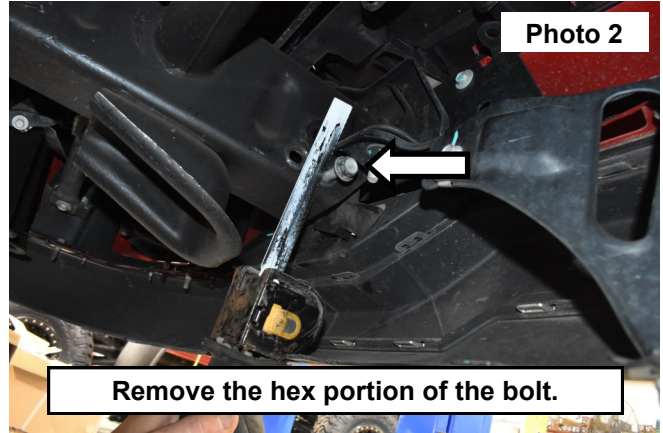
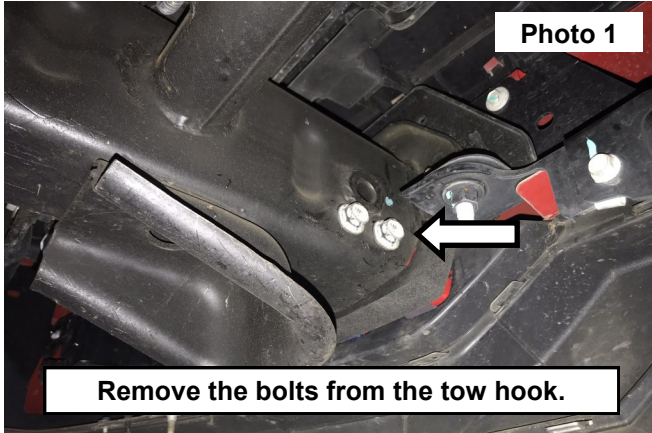
**Torque Specs:**

Size	Grade 5	Grade 8	Size	Class 8.8	Class 10.9
5/16"	15 ft/lbs	20ft/lbs	6MM	5ft/lbs	9ft/lbs
3/8"	30 ft/lbs	35ft/lbs	8MM	18ft/lbs	23ft/lbs
7/16"	45 ft/lbs	60ft/lbs	10MM	32ft/lbs	45ft/lbs
1/2"	65 ft/lbs	90ft/lbs	12MM	55ft/lbs	75ft/lbs
9/16"	95 ft/lbs	130ft/lbs	14MM	85ft/lbs	120ft/lbs
5/8"	135ft/lbs	175ft/lbs	16MM	130ft/lbs	165ft/lbs
3/4"	185ft/lbs	280ft/lbs	18MM	170ft/lbs	240ft/lbs

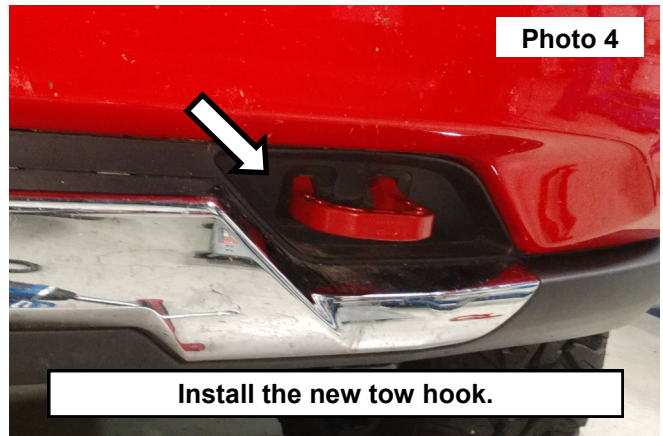
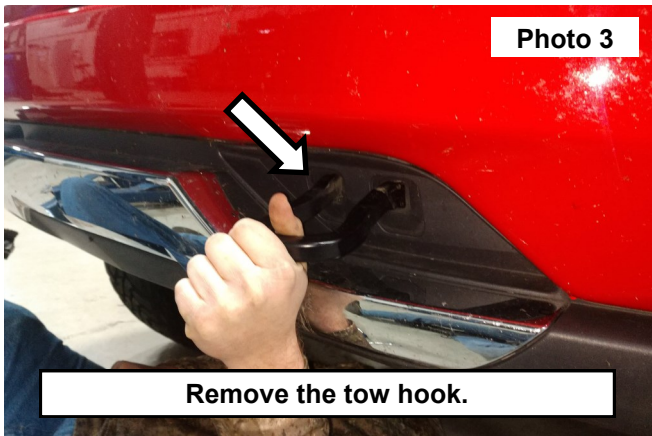


## INSTALLATION INSTRUCTONS

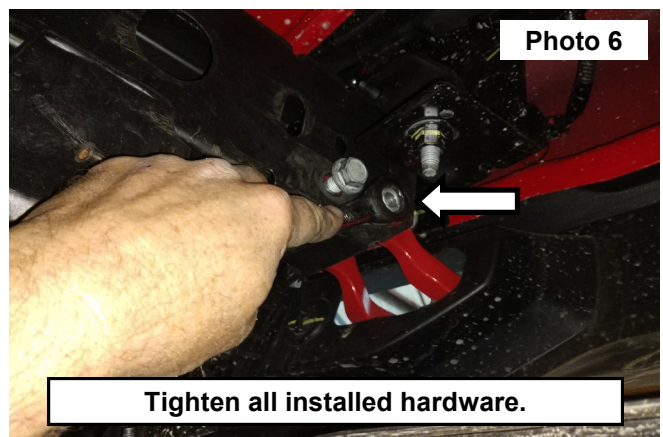
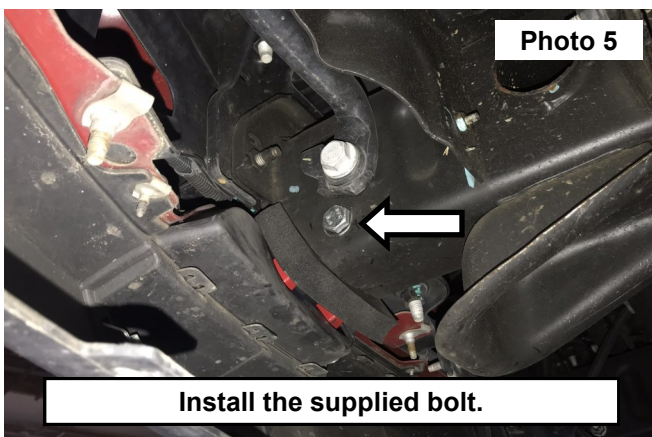
1. Locate the (2) bolts securing the tow hook to the front of the frame. Using a 18mm wrench remove the rear bolt from the tow hook. Then remove the nut from the front bolt. Retain hardware. **See Photo 1.**
2. Shown on the driver side. Use a reciprocating saw to remove the hex portion of the bolt. Driver side **ONLY**. Then remove the remaining bolt from the frame and tow hook. **See Photo 2.**



3. Pull the tow hook through the front bumper leaving the padding in-between the bumper and the frame. **See Photo 3.**
4. Install the supplied tow hook into the bumper, padding and the frame end. **See Photo 4.**



5. Install (1) of the supplied 12mm -1.75 x 120mm hex bolts and (1) 12mm flat washer into the tow hook. **See Photo 5. Driver side only.**
6. Secure the installed bolt using the OE nut onto the bolt. Use the retained OE bolt into the rear mount of the tow hook. Tighten all hardware using a 18mm wrench. **See Photo 6.**
7. Remove the Passengers side tow hook using an 18mm wrench / Socket and retain the hardware. **Do not cut the Passengers side bolt.**
8. Install the Passengers side tow hook. Using the retained hardware. Tighten all bolts using an 18mm wrench / socket.



By purchasing any item sold by Rough Country, LLC, the buyer expressly warrants that he/she is in compliance with all applicable, State, and Local laws and regulations regarding the purchase, ownership, and use of the item. It shall be the buyers responsibility to comply with all Federal, State and Local laws governing the sales of any items listed, illustrated or sold. The buyer expressly agrees to indemnify and hold harmless Rough Country, LLC for all claims resulting directly or indirectly from the purchase, ownership, or use of the items.

