

TOYOTA 2014-20 Tundra Crew Cab Retractable Steps W/ Light

Thank you for choosing Rough Country for all your vehicle needs.

Please read instructions before beginning installation. Check the kit hardware against the kit contents shown below. Be sure you have all needed parts and know where they go.

If question exist, please call us @1-800-222-7023. We will be happy to answer any questions concerning this product.

Check all fasteners for proper torque. Check to ensure for adequate clearance between all components.

Periodically check all hardware for tightness.

KIT CONTENTS:

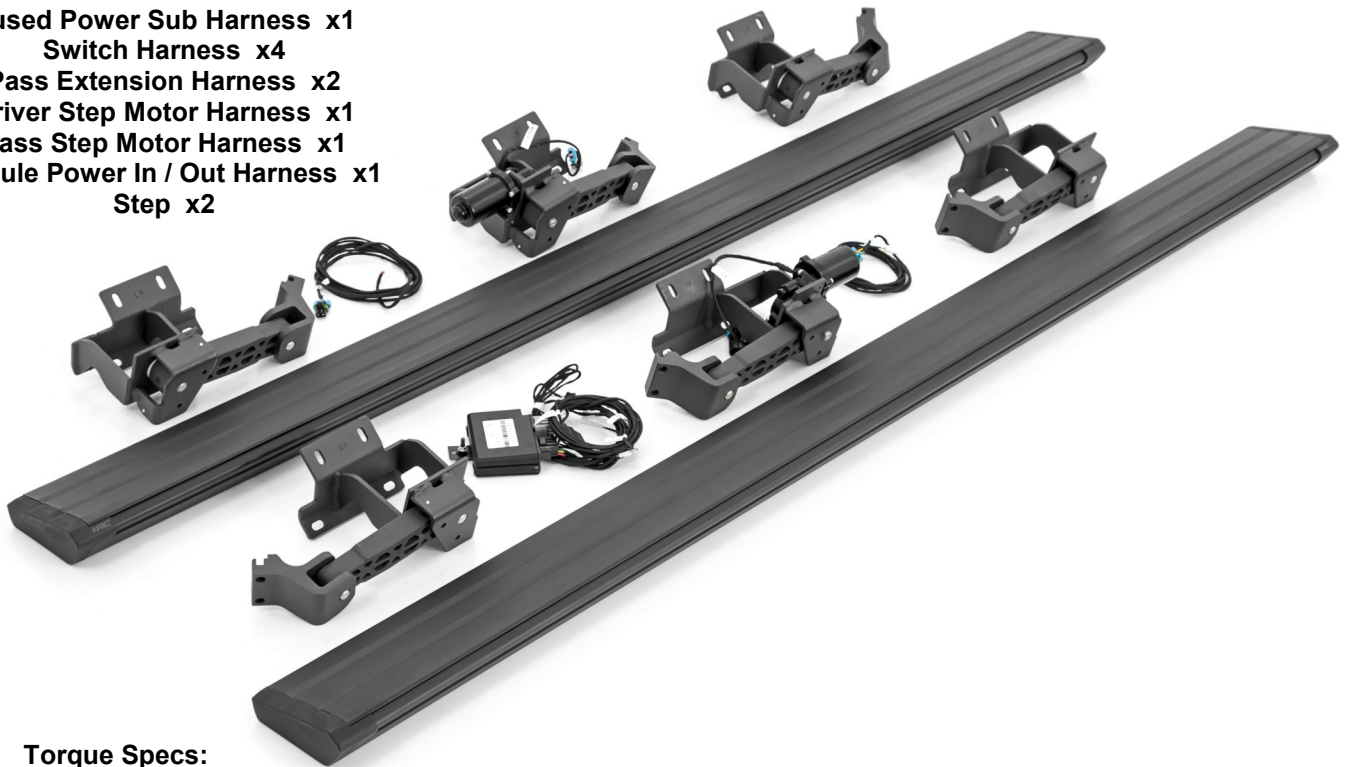
- LF, LM, LR Brackets x1
- RF, RM, RR Brackets x1
- Idler Arm Bracket Right x2
- Idler Arm Bracket Left x2
- Step Motor Right x1
- Step Motor Left x1
- Control Module x1
- Fused Power Sub Harness x1
- Switch Harness x4
- Pass Extension Harness x2
- Driver Step Motor Harness x1
- Pass Step Motor Harness x1
- Module Power In / Out Harness x1
- Step x2

TOOLS NEEDED:

- T15 Torx Bit
- 7/16 Drill Bit
- Drill Motor
- 5mm Allen Wrench
- 10mm Wrench or Socket
- 13mm Wrench or Socket
- Phillips Bit Driver
- 7/64 Drill Bit

HARDWARE INCLUDED:

- Hex Head Bolts x12
- Allen Head Bolts x6
- Shims x18
- Phillips Head Screws x8
- Wire Loom Clip x8



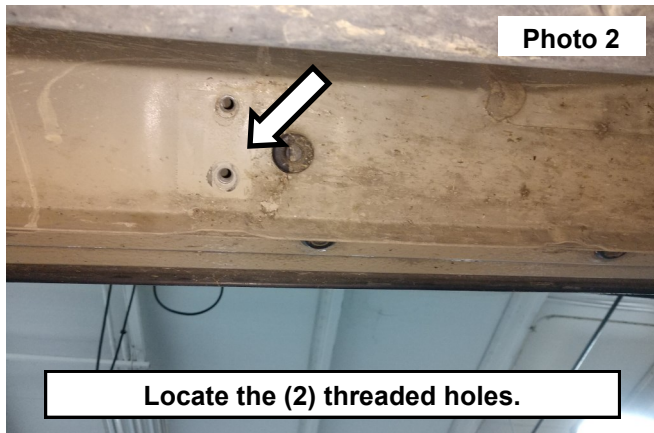
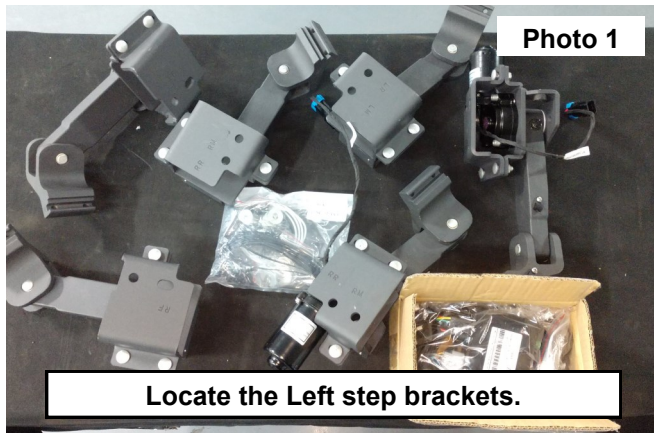
Torque Specs:

Size	Grade 5	Grade 8	Size	Class 8.8	Class 10.9
5/16"	15 ft/lbs	20ft/lbs	6MM	5ft/lbs	9ft/lbs
3/8"	30 ft/lbs	35ft/lbs	8MM	18ft/lbs	23ft/lbs
7/16"	45 ft/lbs	60ft/lbs	10MM	32ft/lbs	45ft/lbs
1/2"	65 ft/lbs	90ft/lbs	12MM	55ft/lbs	75ft/lbs
9/16"	95 ft/lbs	130ft/lbs	14MM	85ft/lbs	120ft/lbs
5/8"	135ft/lbs	175ft/lbs	16MM	130ft/lbs	165ft/lbs
3/4"	185ft/lbs	280ft/lbs	18MM	170ft/lbs	240ft/lbs

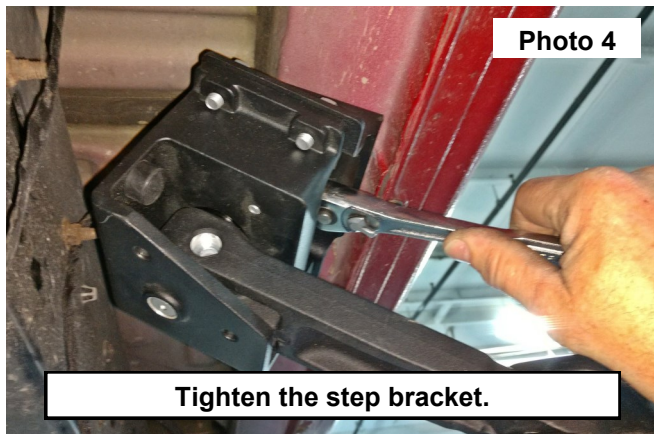
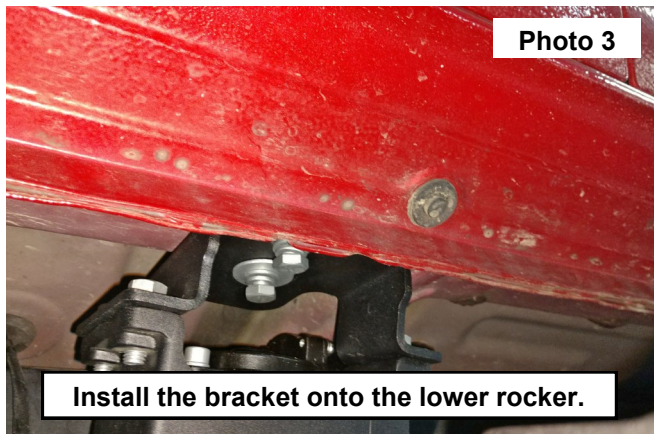


INSTALLATION INSTRUCTIONS

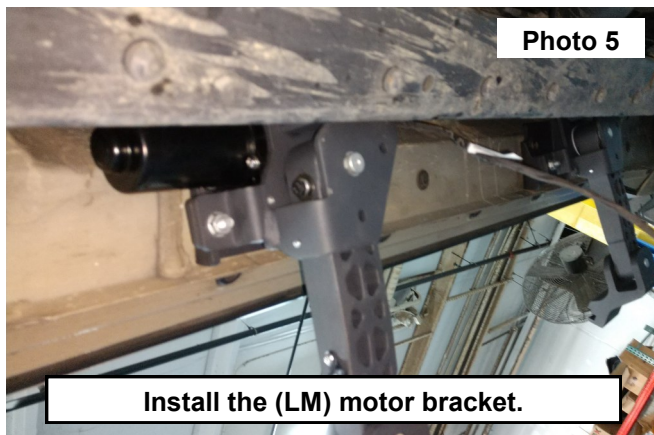
1. Locate the Left side step brackets from front to back as labeled **LF, LM, LR**. Shown with idler arm and motor. **See Photo 1.** Left will be the Driver Side of the vehicle and left front bracket is shown in pic below.
2. Locate the (2) threaded holes in the lower rocker panel. **See Photo 2.**



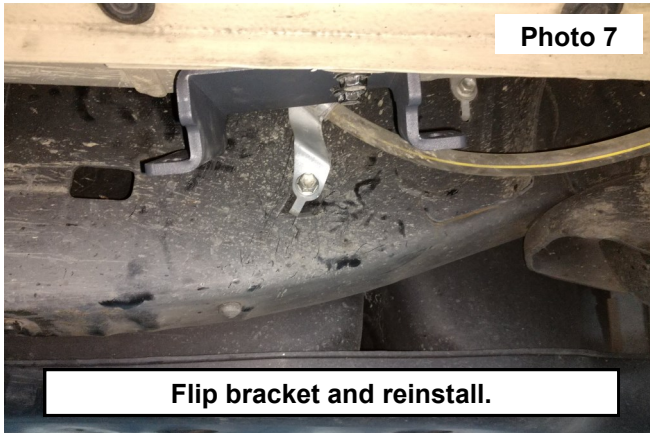
3. Install the (**LF**) idler arm onto the lower rocker panel. Use (2) of the supplied 8mm hex head bolts, (2) 8mm lock washers and (2) 8mm flat washers. **See Photo 3.**
4. Tighten the step bracket using a 13mm socket. **See Photo 4.**



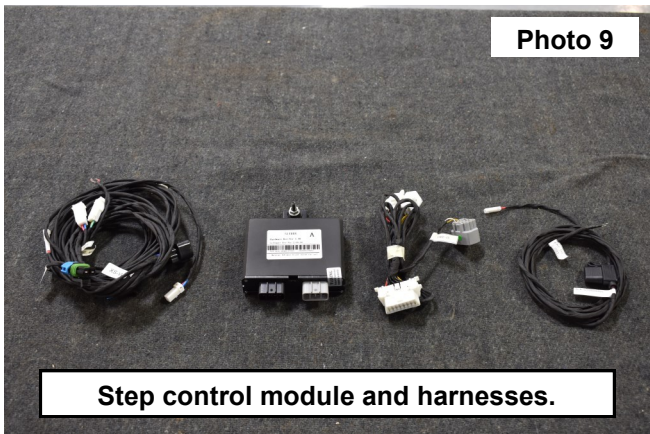
5. Install the (**LM**) motor bracket onto the middle threaded inserts in the cab. use the supplied 8mm hex head bolts, (2) 8mm lock washers and (2) 8mm flat washers. **See Photo 5.**
6. Remove the E-brake cable mount from the frame using a 13mm socket. **See Photo 6.**



7. Flip the E-brake bracket over raising the cable up toward the cab. Secure the bracket using the OE bolt. Then tighten using a 13mm socket. **See Photo 7.**
8. Install the rear idler arm (LR) onto the threaded inserts using the supplied 8mm hex head bolts, (2) 8mm lock washers and (2) 8mm flat washers. **See Photo 8.**



9. Locate the right side step brackets front to back as labeled **RF, RM, RR** and install onto the passenger side of the vehicle using steps 2-19. The right side is the passenger side.
10. **NOTE:** Disconnect the battery of the vehicle at this time.
11. Locate the step control module and harnesses. **See Photo 9.**
12. Remove the lower scuff plate. **See Photo 10.**



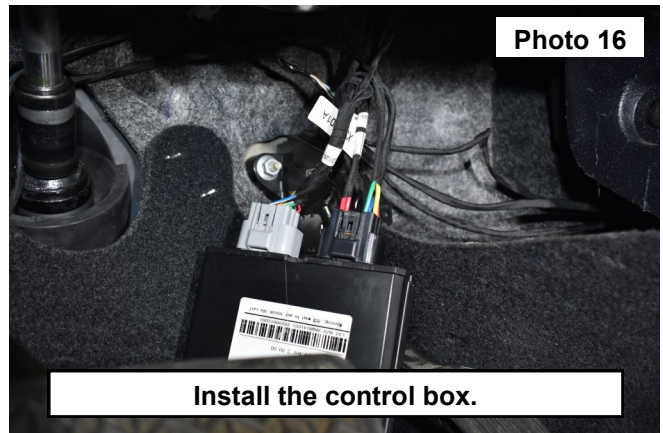
13. Pull the center post inner trim panel back to access the wiring inside. **See Photo 11.**
14. Remove the (4) door switches from the front and back door and unplug from the factory harness. Use a T15 Torx bit. **See Photo 12.**



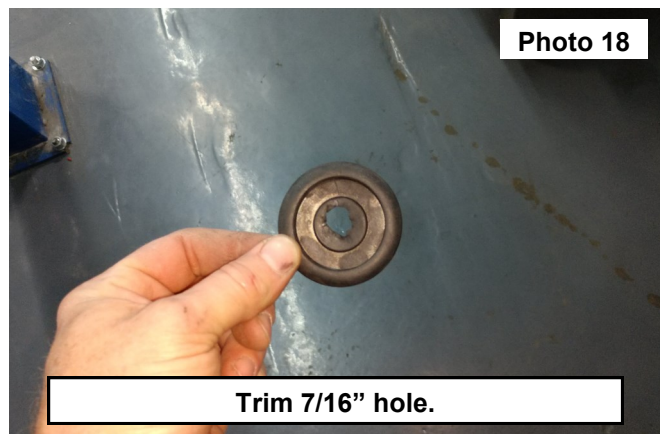
15. Locate the wiring that states the position of the door of installation. Door shown is (RF). Connect the new power step harness to the OE vehicle harness. **See Photo 13.**
16. Place the power step harness through the switch opening. Then connect the door switch to the harness and bolt the switch into place using the OE bolt. Using a T15 Torx bit. **See Photos 14 and 15.**



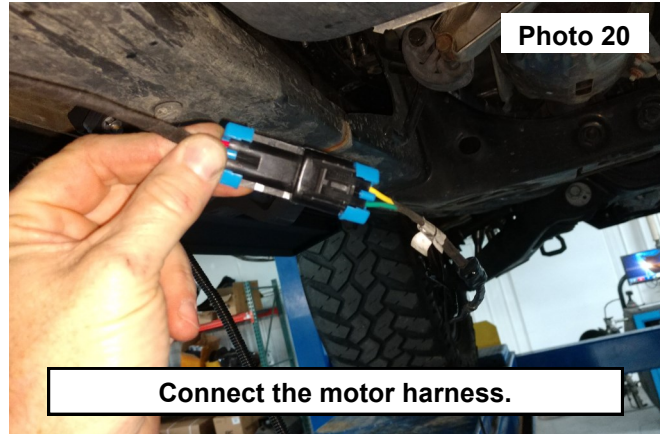
17. Place the control box to the center of the vehicle connecting the door harness on the drivers side of the vehicle. **See Photo 16.**



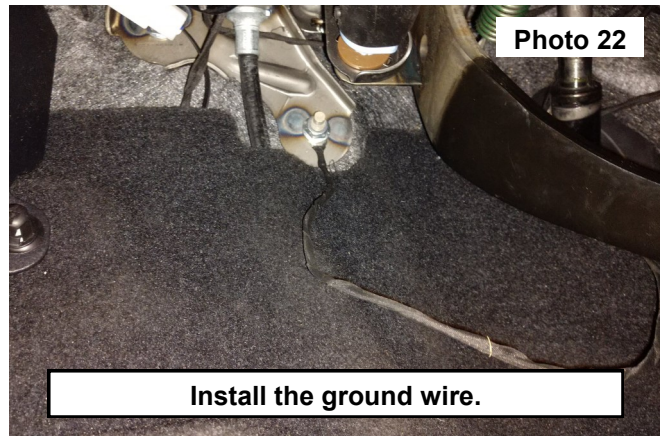
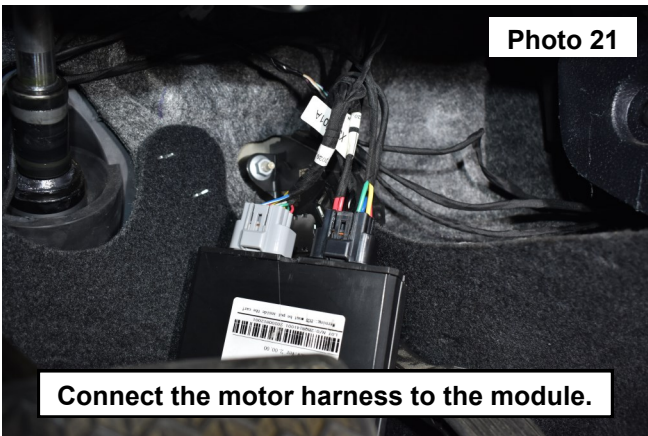
18. Lift the carpet on each side of the vehicle and remove the access plug in the floor. **See Photo 17.**
19. Trim a 7/16" hole into the floor plug. **See Photo 18.**



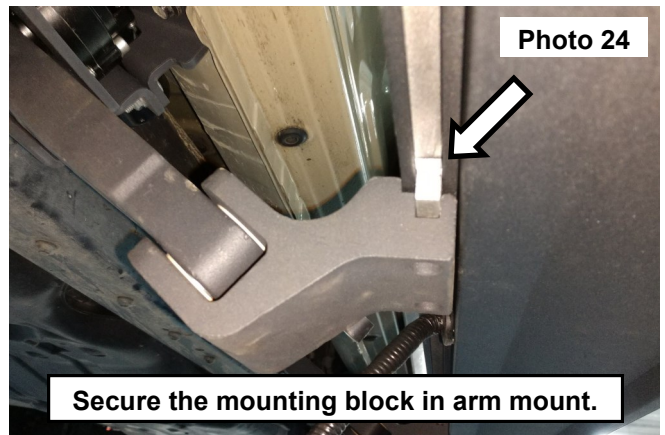
20. Install the motor and light wiring harness through the floor and into the hole in the floor. Compress the plug into the floor hole. **See Photo 19.**
21. Connect the harness to the motor harness. Then secure the wires away from heat or moving parts. **See Photo 20.**



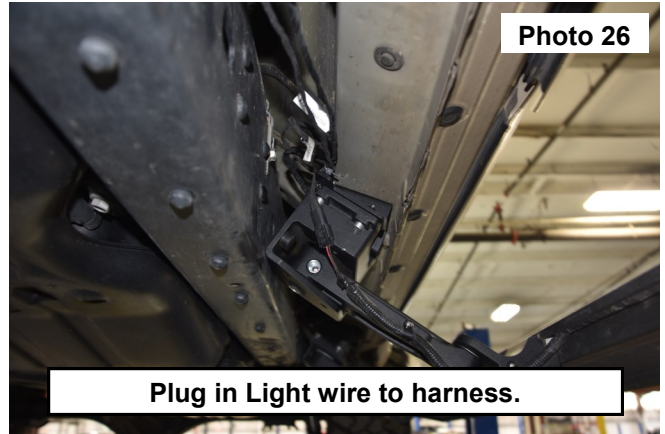
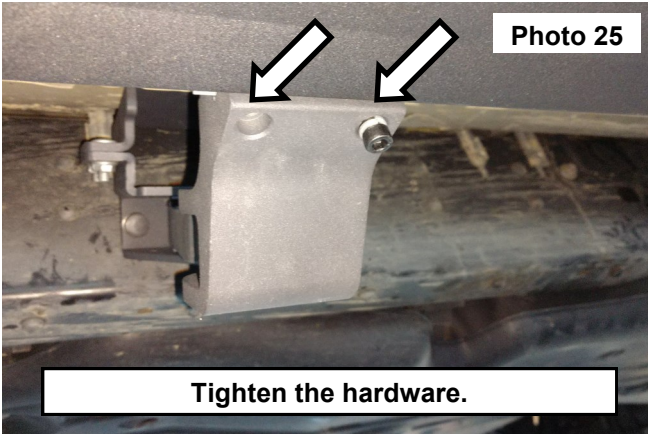
22. Connect the motor and light wiring harness to the module under the dash. **See Photo 21.**
23. Connect the ground wire to the stud on the inside lower fire wall using a 13mm socket. **See Photo 22.**



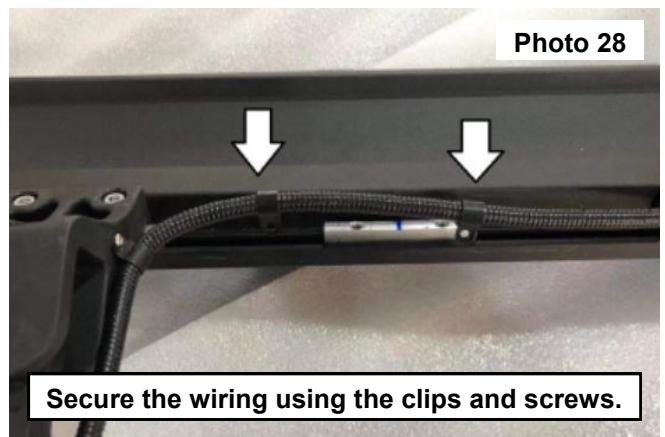
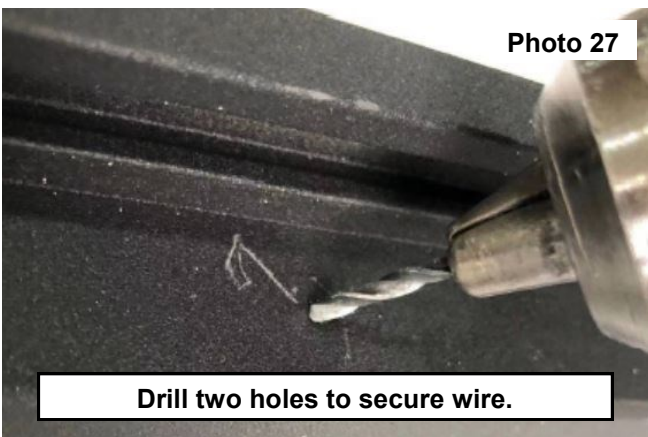
24. Install the step onto the (3) arm mounts, centering the board on the vehicle. **See Photo 23.**
25. Insert the mounting blocks into the arm mount. **See Photo 24.**



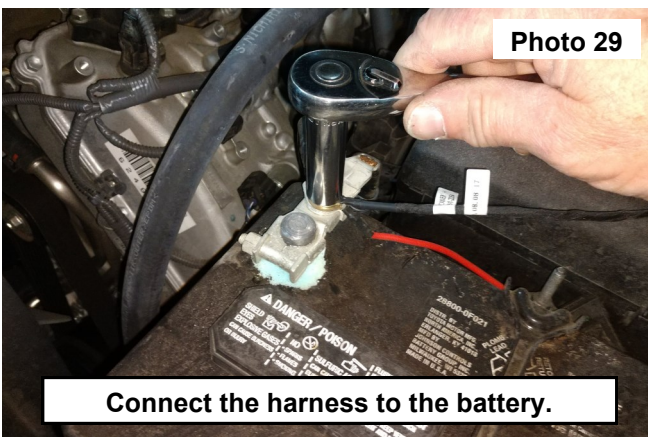
26. Secure using (2) of the supplied 6mm bolts and 6mm washers. Tighten using a 4mm Allen Wrench. **See Photos 25.**
27. With the step closed, connect the step lighting wire to the vehicle harness. **See Photo 26**



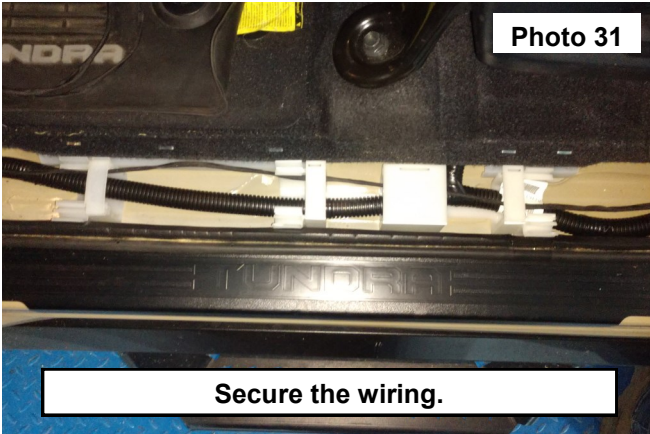
28. Drill a hole in the step board as shown using a 7/64 bit and secure the wire to the step with the supplied phillips head screws and plastic loom clips. **See Photo 27 and 28.**



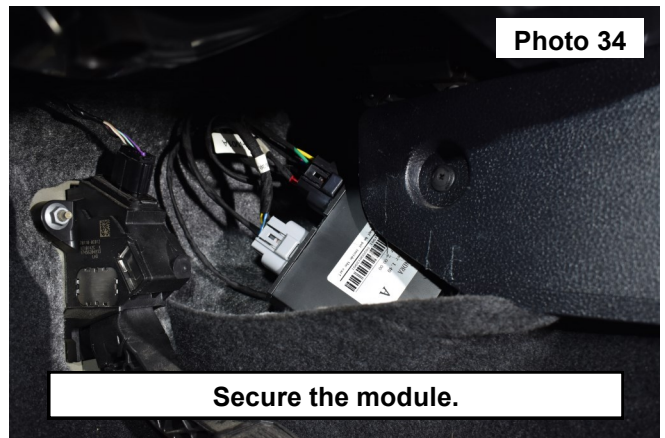
29. Repeat steps 1-27 on the opposite side of the vehicle. Use the Passenger side extension wiring to the module to the motor and light wiring, mounting of the step brackets and the step board to the arms.
30. Making connections to the battery through the fire wall gromet with the wiring harness.
31. Connect the wiring harness to the battery using a 13mm socket. **See Photo 29.**
32. Check the step movement opening and closing the door. If needed to prevent any binding, install the supplied shims in-between the mount and the vehicle. **See Photo 30.** (Shown with out mounting arm.)



33. Secure all of the door switch wiring in the channel. **See Photo 31.**
34. Secure the step boards wiring harness to the motor arm using (2) clips and (2) screws. Tighten using a Phillips head bit. **See Photo 32.**



35. Install the lower scuff plate. **See Photo 33.**
36. Mount the module behind the center console. **See Photo 34.**



By purchasing any item sold by Rough Country, LLC, the buyer expressly warrants that he/she is in compliance with all applicable, State, and Local laws and regulations regarding the purchase, ownership, and use of the item. It shall be the buyers responsibility to comply with all Federal, State and Local laws governing the sales of any items listed, illustrated or sold. The buyer expressly agrees to indemnify and hold harmless Rough Country, LLC for all claims resulting directly or indirectly from the purchase, ownership, or use of the items.

