

FORD 2015-20 F-150 Crew Cab Retractable Steps w/ Light

Thank you for choosing Rough Country for all your vehicle needs.

Please read instructions before beginning installation. Check the kit hardware against the kit contents shown below. Be sure you have all needed parts and know where they go.

If question exist, please call us @1-800-222-7023. We will be happy to answer any questions concerning this product.

Check all fasteners for proper torque. Check to ensure for adequate clearance between all components.

Periodically check all hardware for tightness.

KIT CONTENTS:

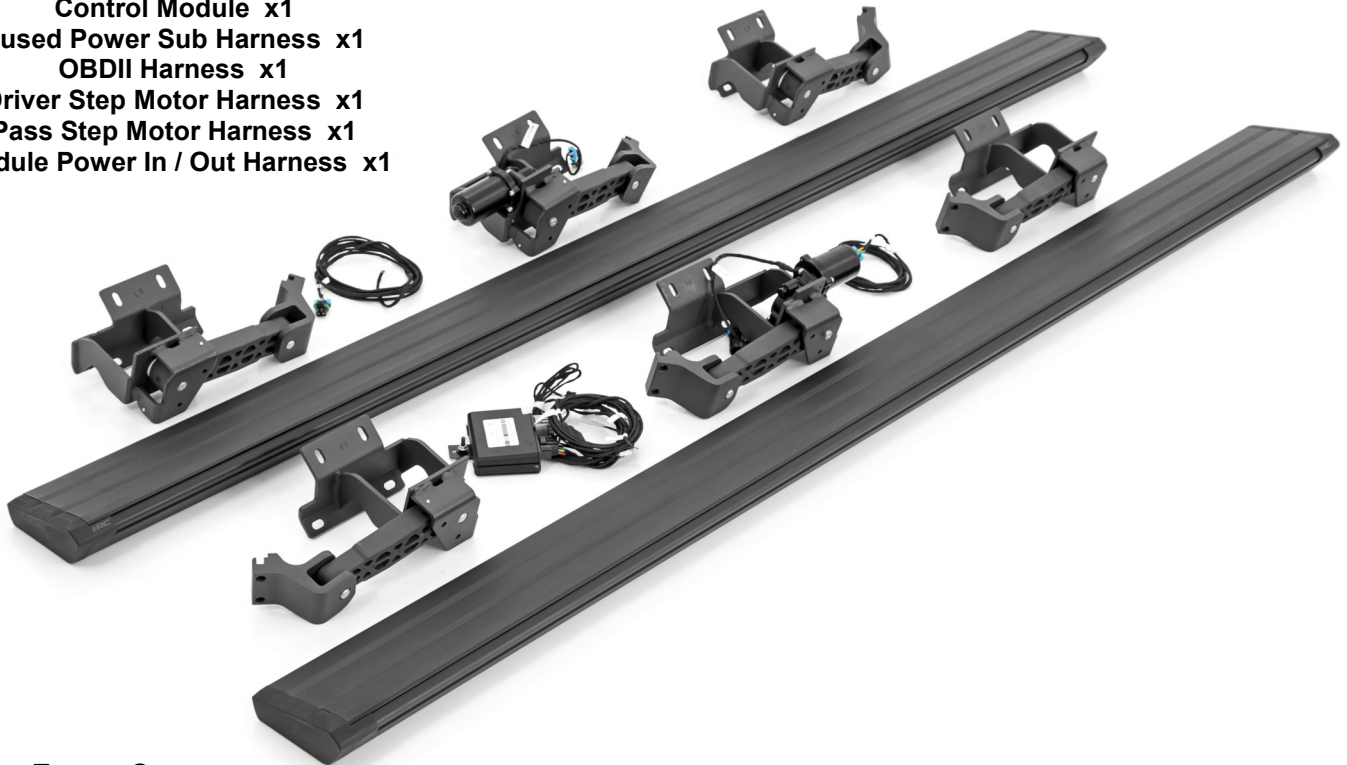
- LF, LM, LR x1
- RF, RM, RR x1
- Idler Arm Bracket Right x2
- Idler Arm Bracket Left x2
- Step Motor Right x1
- Step Motor Left x1
- Control Module x1
- Fused Power Sub Harness x1
- OBDII Harness x1
- Driver Step Motor Harness x1
- Pass Step Motor Harness x1
- Module Power In / Out Harness x1

TOOLS NEEDED:

- 5mm Allen Wrench
- 13mm Wrench or Socket
- Drill Motor
- 7/64 Drill Bit

HARDWARE INCLUDED:

- 8mm Flat Washers x18
- 8mm Flange Lock Nuts x18
- Phillips Screws x4
- Motor Arm Clips x4



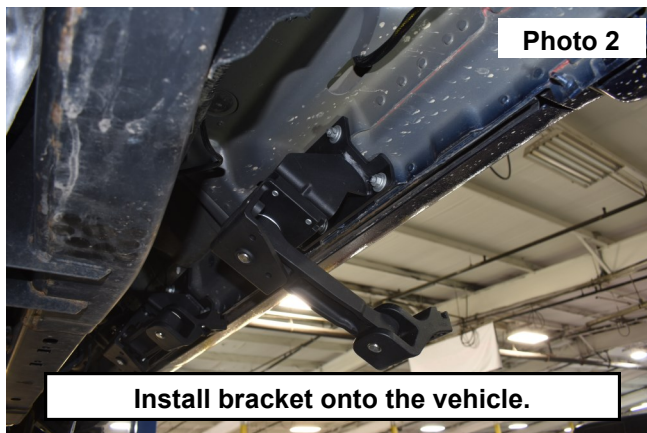
Torque Specs:

Size	Grade 5	Grade 8	Size	Class 8.8	Class 10.9
5/16"	15 ft/lbs	20ft/lbs	6MM	5ft/lbs	9ft/lbs
3/8"	30 ft/lbs	35ft/lbs	8MM	18ft/lbs	23ft/lbs
7/16"	45 ft/lbs	60ft/lbs	10MM	32ft/lbs	45ft/lbs
1/2"	65 ft/lbs	90ft/lbs	12MM	55ft/lbs	75ft/lbs
9/16"	95 ft/lbs	130ft/lbs	14MM	85ft/lbs	120ft/lbs
5/8"	135ft/lbs	175ft/lbs	16MM	130ft/lbs	165ft/lbs
3/4"	185ft/lbs	280ft/lbs	18MM	170ft/lbs	240ft/lbs

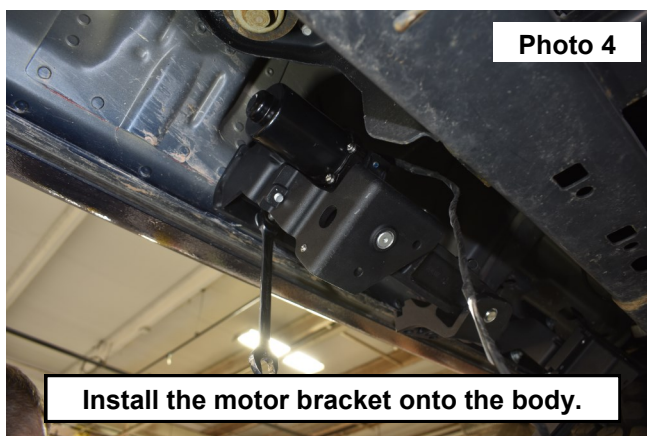
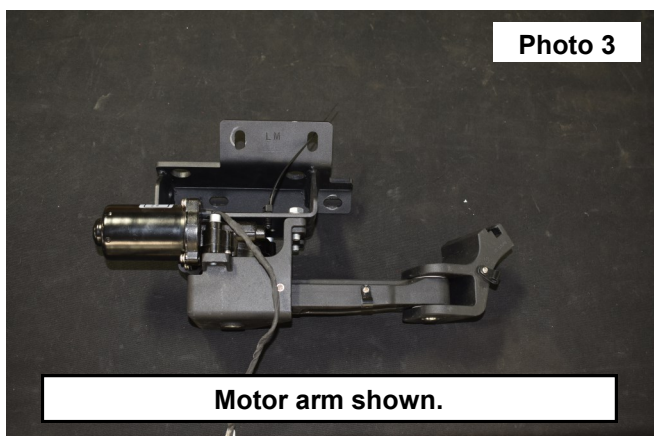


INSTALLATION INSTRUCTIONS

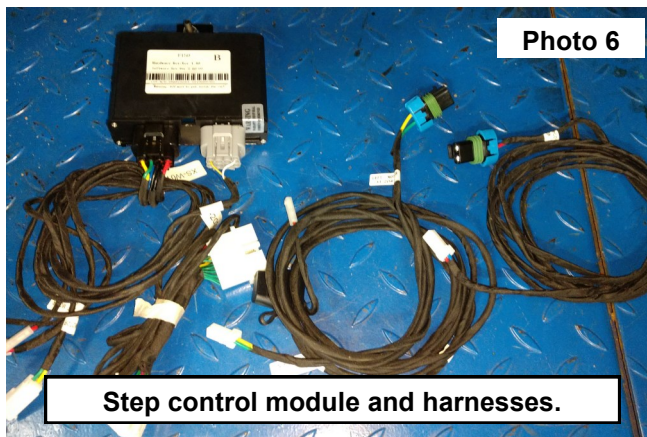
1. Locate the Left side step brackets from front to back as labeled LF, LM, LR. See Photo 1. Left will be the Driver Side of the vehicle.
2. Install the LF bracket onto the body of the vehicle using (3) the supplied 8mm flange lock nuts and (3) of the 8mm flat washers onto the studs. Snug but do not fully tighten using a 13mm socket. See Photo 2.



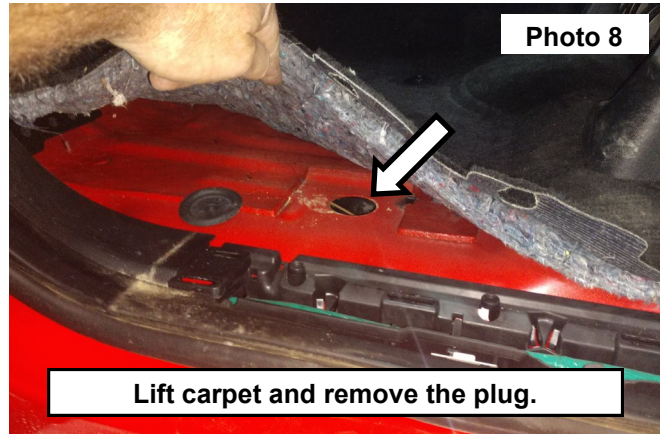
3. Locate the LM motor bracket and install it onto the center mount of the cab using (3) the supplied 8mm flange lock nuts and (3) of the 8mm flat washers onto the studs. Snug but do not fully tighten using a 13mm socket. See Photos 3 and 4.



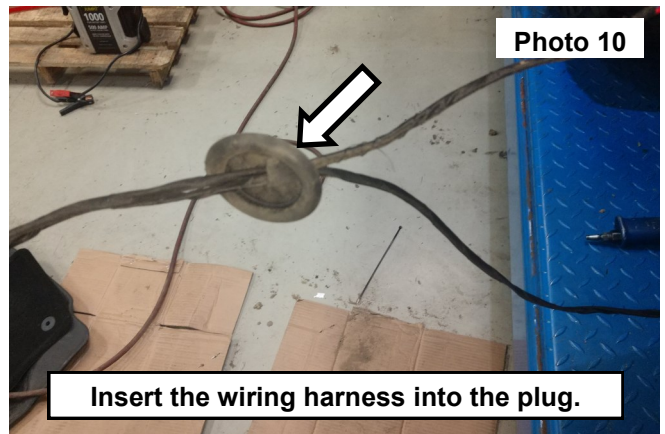
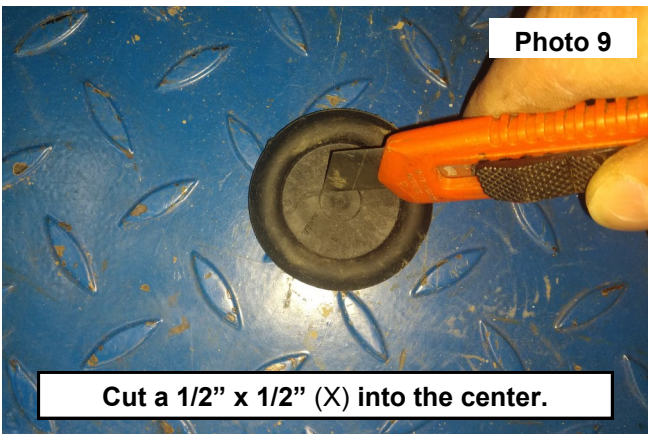
4. Install the LR motor bracket and install it onto the rear mount of the cab using (3) the supplied 8mm flange lock nuts and (3) of the 8mm flat washers onto the studs. Snug but do not fully tighten using a 13mm socket. See Photo 5.
5. Repeat the installation of the **RF, RM and RR** brackets onto the passengers side of the vehicle.
6. Locate the step control module and harnesses. See Photo 6.



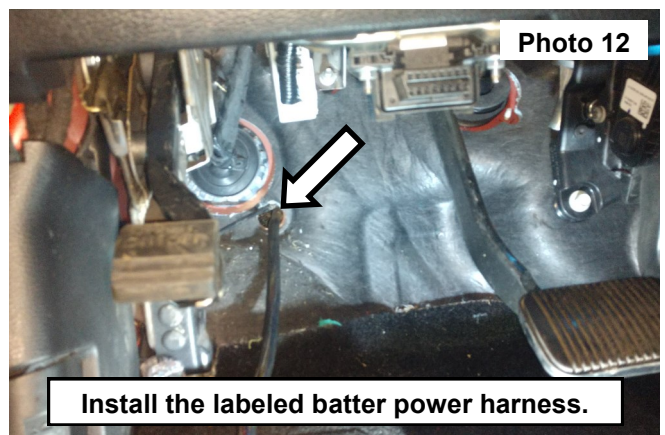
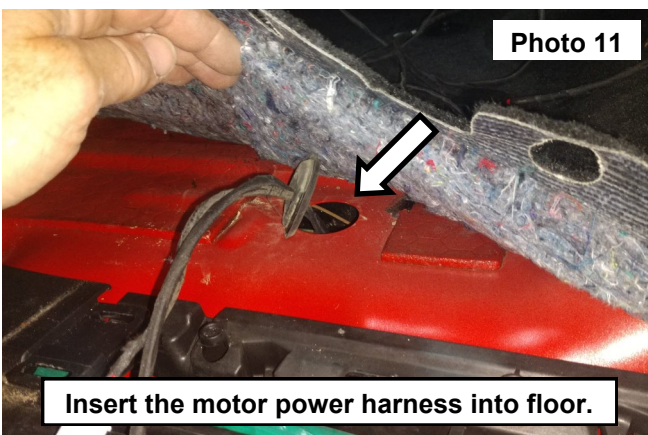
7. Open the drivers door and remove the scuff plate from the vehicle. **See Photo 7.**
8. Lift the carpet up and locate the plug in the floor of the vehicle. **See Photo 8.**



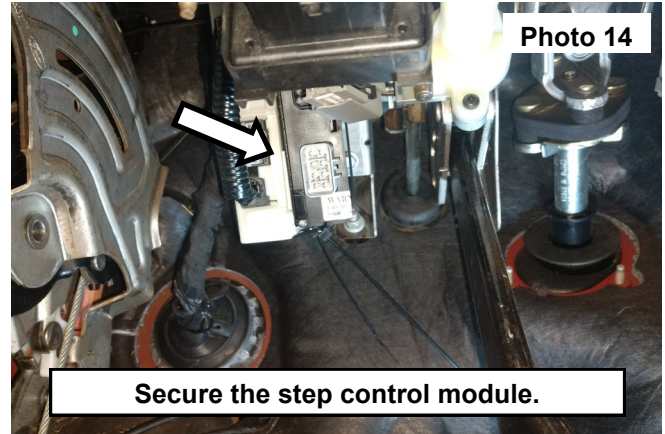
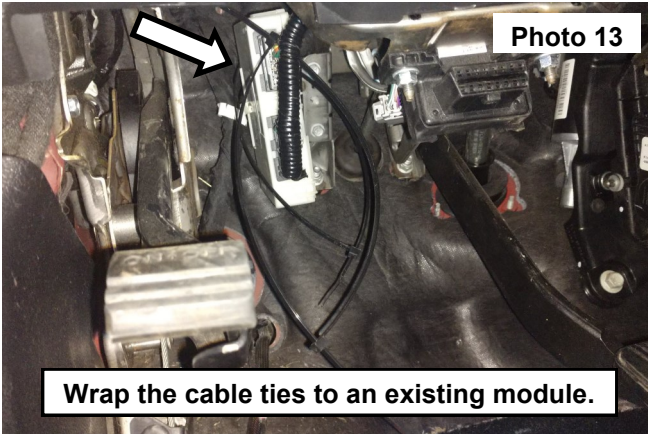
9. Remove the plug from the floor, using a razor knife cut a 1/2" x 1/2" (X) into the center of the plug to insert the wiring through. **See Photo 9.**
10. Locate the labeled motor power harness and insert the motor plug and board light wires through the plug. **See Photo 10.**



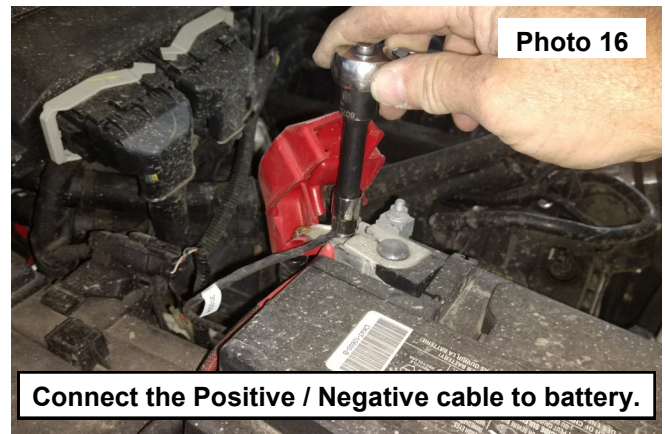
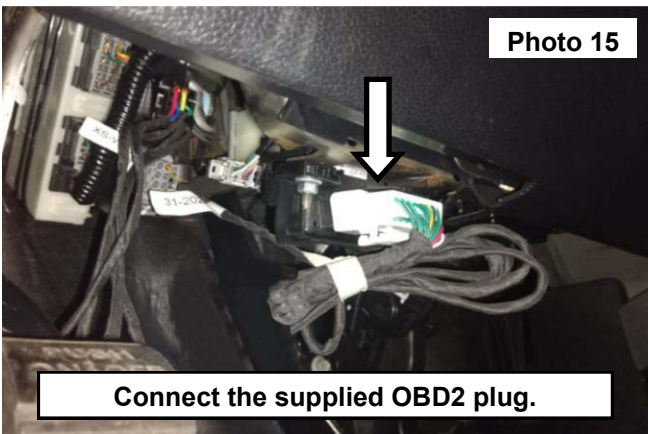
11. Insert the motor power harness through and install the plug into the OE location in the floor. **See Photo 11.**
12. Repeat steps 7-11 on the passengers side of the vehicle.
13. Install the labeled batter power harness into the access hole in the lower fire wall. **See Photo 12.**



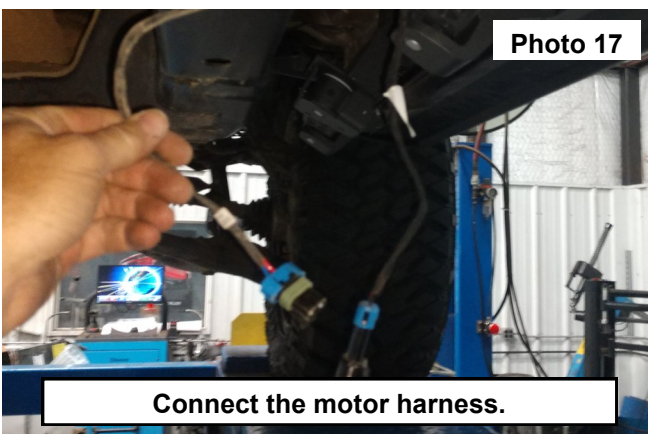
14. Mounting the step control module under the dash. Wrap the cable ties around an existing module place in the step control module and secure pulling the cable ties tight. **See Photos 13 and 14.**



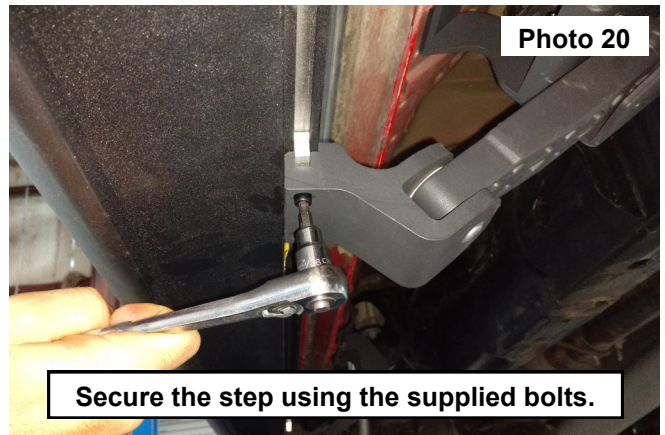
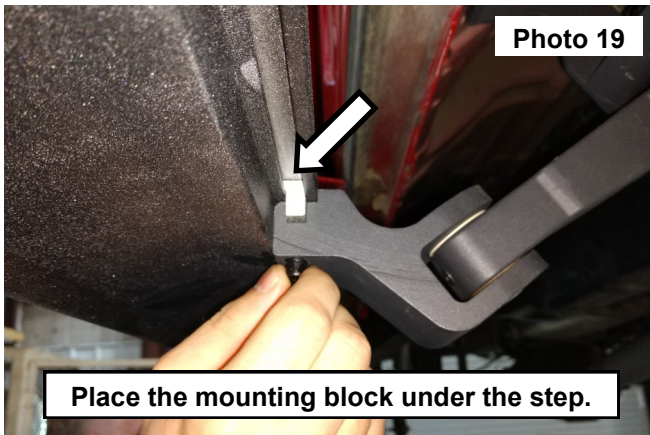
15. Connect the motor harness and power harness to the step control module. Then connect the supplied OBD2 plug into the OE OBD2 plug. **See Photo 15.**
16. Connect the fused power wire to the positive battery terminal and the negative power wire to the battery. **See Photo 16.**



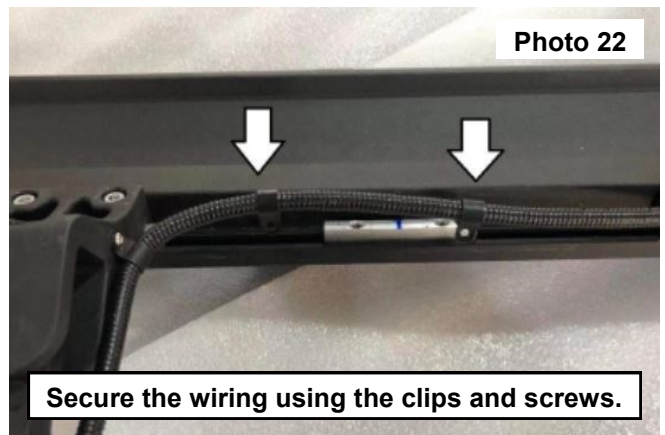
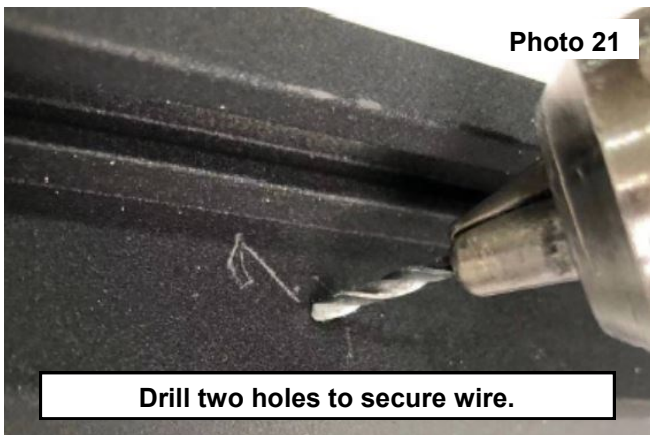
17. Close all (4) doors on the vehicle.
18. Connect the harness to the motor, using a supplied cable tie to secure the wiring in a safe location. **See Photo 17.**
19. Open each door insuring that the driver and passenger side step motors are activated.
20. Open one door to extend the motor arm open the idler arms to the rubber bump stop.
21. Install and center the step board onto the idler arm mounts. **See Photo 18.**



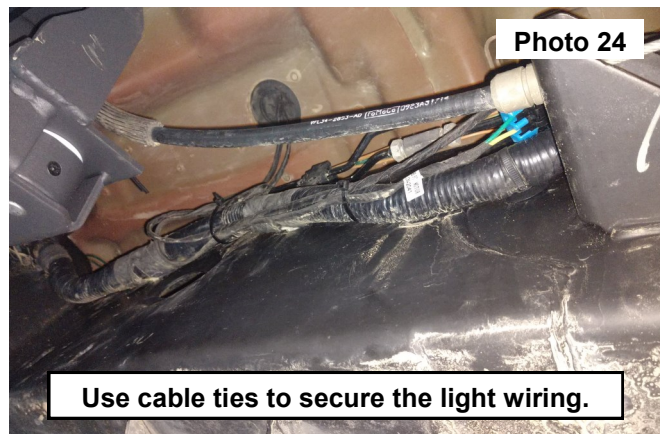
22. Slide the mounting block under each of the (3) mounts, then secure the step board using (2) of the supplied 6mm socket head bolts and (2) 6mm lock washers in each step mount. **See Photo 19.**
23. Check that the step is center on the vehicle and snug the hardware using a 5mm Allen wrench. **See Photo 20.**
24. **NOTE:** Tighten the motor arm first, test the step to the closed position. Then open and adjust the idler arms into position and tighten the front then rear while testing for no bind. Tighten body brackets using a 13mm socket/wrench.



25. Drill a hole in the step board as shown using a 7/64 bit and secure the wire to the step with the supplied phillips head screws and plastic loom clips. **See Photo 21 and 22.**



26. With the step closed, connect the step board lighting harness and secure it using the (2) supplied Phillip screws and wiring clips. **See Photo 23.** Use a Phillips bit driver to tighten.
27. Using the cable clamps to secure the harnesses away from any heat or moving parts. **See Photo 24.**



28. Place the carpet into position on the floor board and install the scuff plate, securing any wiring. **See Photo 25.**



By purchasing any item sold by Rough Country, LLC, the buyer expressly warrants that he/she is in compliance with all applicable, State, and Local laws and regulations regarding the purchase, ownership, and use of the item. It shall be the buyers responsibility to comply with all Federal, State and Local laws governing the sales of any items listed, illustrated or sold. The buyer expressly agrees to indemnify and hold harmless Rough Country, LLC for all claims resulting directly or indirectly from the purchase, ownership, or use of the items.

