

14-18 Chevrolet Silverado /GMC Sierra Crew Cab 1500 Retractable Steps w/ Light

Thank you for choosing Rough Country for all your vehicle needs.

Please read instructions before beginning installation. Check the kit hardware against the kit contents shown below. Be sure you have all needed parts and know where they go.

If question exist, please call us @1-800-222-7023. We will be happy to answer any questions concerning this product.

Check all fasteners for proper torque. Check to ensure for adequate clearance between all components.

Periodically check all hardware for tightness.

KIT CONTENTS:

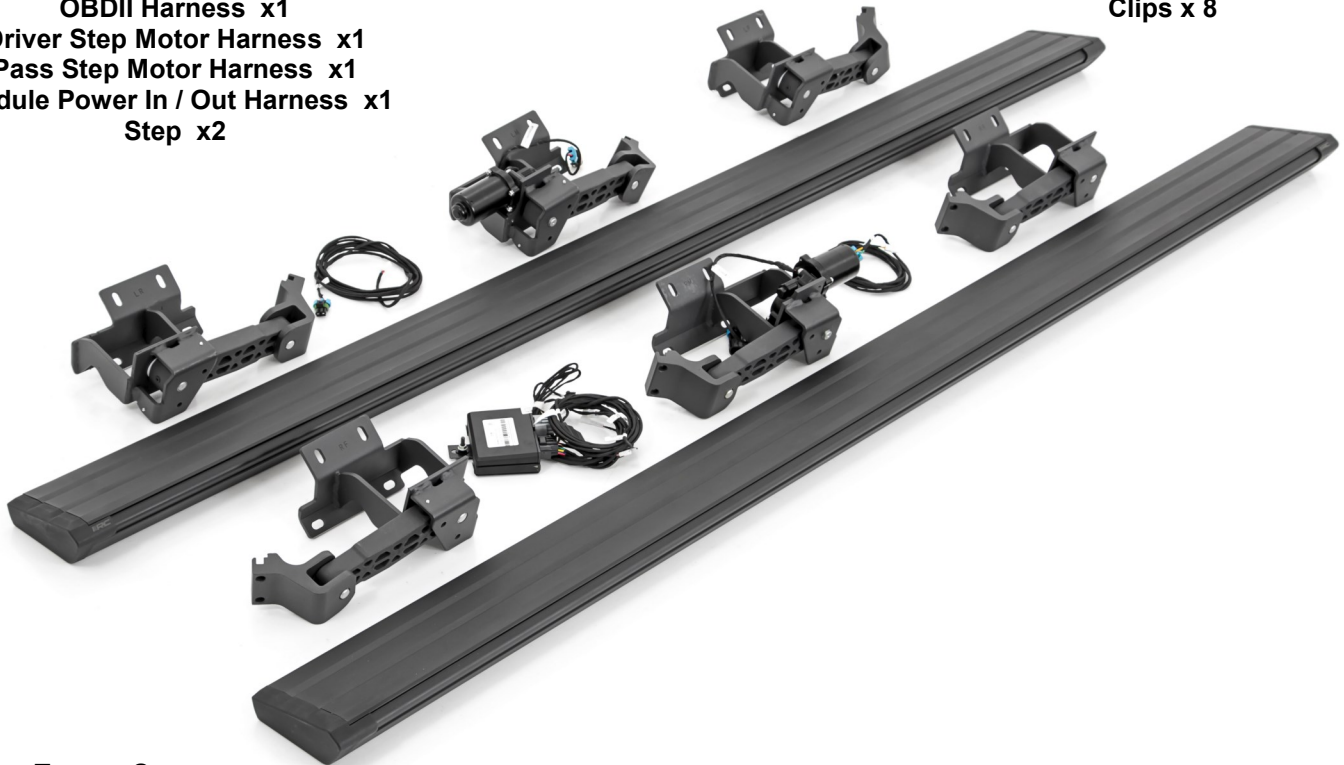
- Idle Arm Bracket RF, RR x1
- Idle Arm Bracket LF, LR x1
- Step Motor Bracket RM x1
- Step Motor Bracket LM x1
- Control Module x1
- Fused Power Sub Harness x1
- OBDII Harness x1
- Driver Step Motor Harness x1
- Pass Step Motor Harness x1
- Module Power In / Out Harness x1
- Step x2

TOOLS NEEDED:

- 15mm Wrench or Socket
- Razor Knife
- 1/2" Drill Bit
- Drill Motor

HARDWARE INCLUDED:

- 8mm Clips x8
- 8mm x 30mm Hex Head Bolts x12
- 8mm Flat Washers x12
- 6mm Lock Washers x12
- 6mm x 20mm Socket Head Bolts x12
- Phillip Screws x8
- Clips x 8



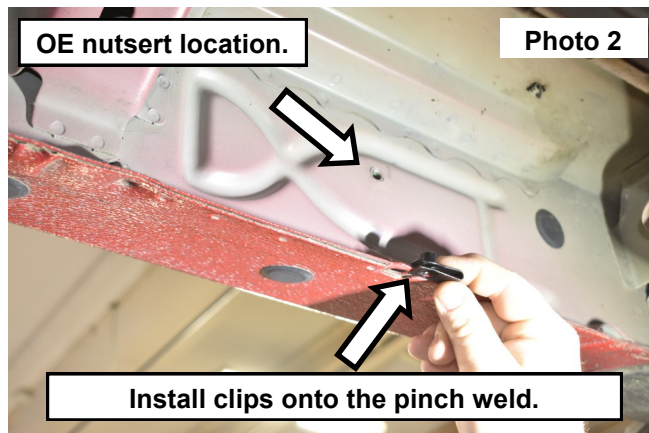
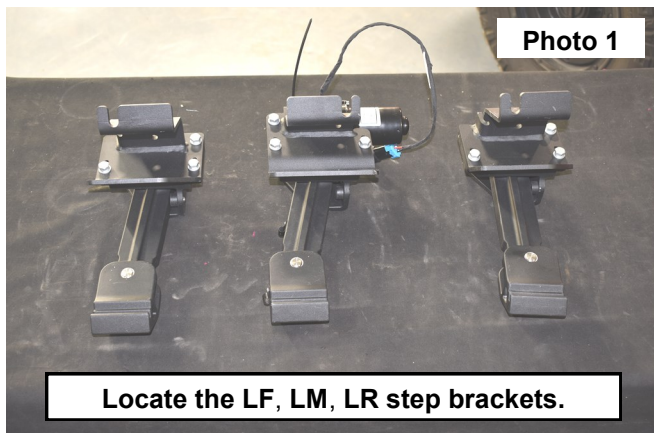
Torque Specs:

Size	Grade 5	Grade 8	Size	Class 8.8	Class 10.9
5/16"	15 ft/lbs	20ft/lbs	6MM	5ft/lbs	9ft/lbs
3/8"	30 ft/lbs	35ft/lbs	8MM	18ft/lbs	23ft/lbs
7/16"	45 ft/lbs	60ft/lbs	10MM	32ft/lbs	45ft/lbs
1/2"	65 ft/lbs	90ft/lbs	12MM	55ft/lbs	75ft/lbs
9/16"	95 ft/lbs	130ft/lbs	14MM	85ft/lbs	120ft/lbs
5/8"	135ft/lbs	175ft/lbs	16MM	130ft/lbs	165ft/lbs
3/4"	185ft/lbs	280ft/lbs	18MM	170ft/lbs	240ft/lbs

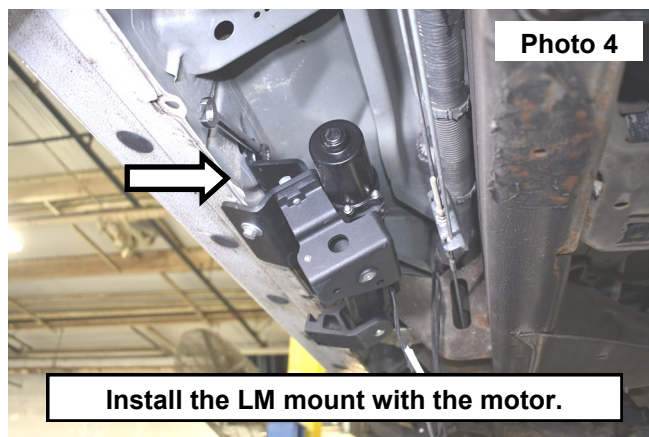


INSTALLATION INSTRUCTONS

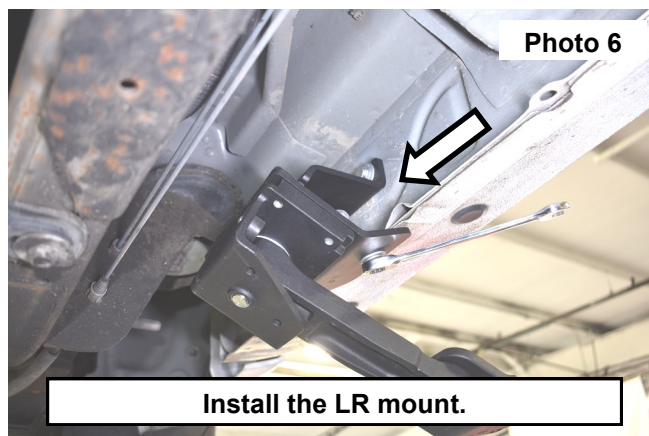
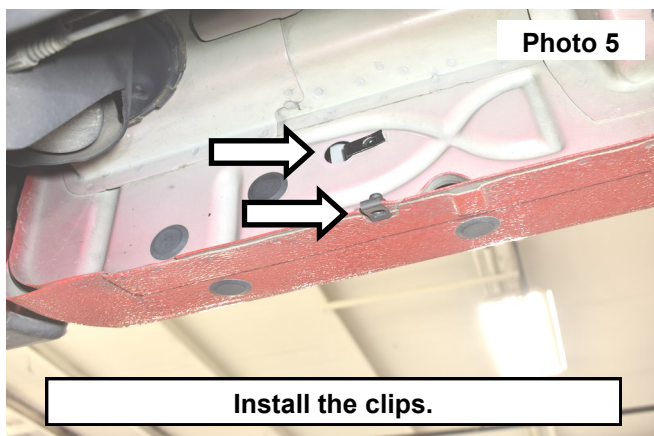
1. Locate the Left side step brackets from front to back as labeled **LF, LM, LR**. Shown with idler arm and motor. **See Photo 1.** Left will be the Driver Side of the vehicle.
2. Locate the (3) OE step nutsert locations in the body of vehicle and install the 8mm clips onto to the pinch weld of the body in the. **See Photo 2.**



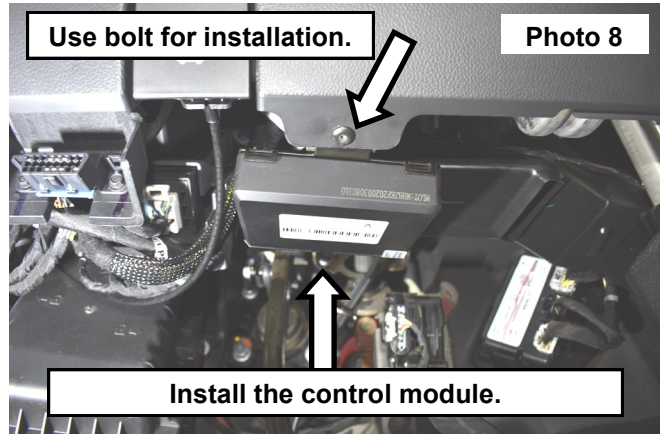
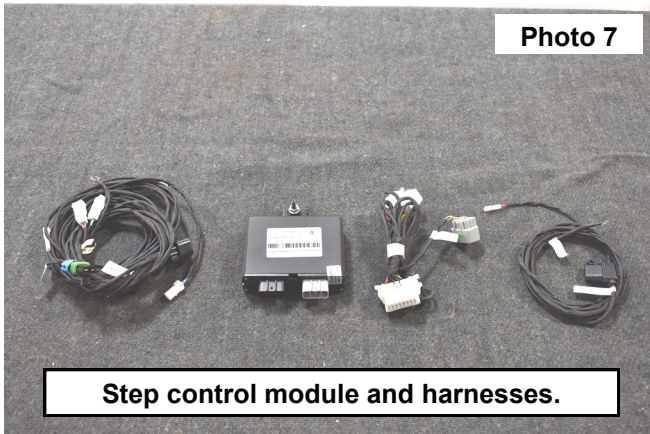
3. Install the **LF** mount as shown and secure using (2) of the supplied 8mm flat washers and (2) flange nuts onto the flag bolts, install the (2) flat washers and (2) 8mm x 30mm bolts into the stock threaded body location and the lower clip on the pinch weld. **See Photo 3.**
4. Install the **LM** mount with the step motor as shown and secure using (2) of the supplied 8mm flat washers and (2) flange nuts onto the flag bolts, install the (2) flat washers and (2) 8mm x 30mm bolts into the stock threaded body location and the lower clip on the pinch weld. **See Photo 4.**



5. Install the (2) 8mm Clips into the body of the vehicle and the pinch weld. **See Photo 5.**
6. Install the **LR** mount as shown and secure using (2) of the supplied 8mm flat washers and (2) flange nuts onto the flag bolts, install the (2) flat washers and (2) 8mm x 30mm bolts into the stock threaded body location and the lower clip on the pinch weld. **See Photo 6.**



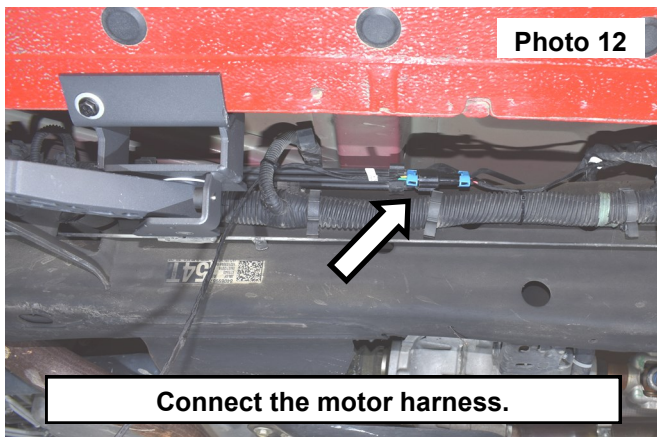
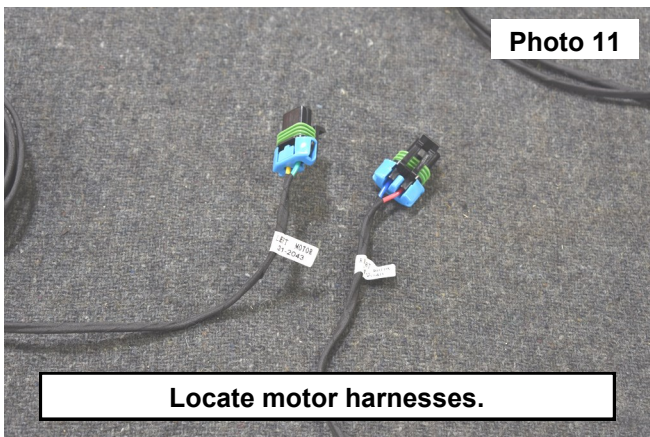
7. **NOTE:** Disconnect the battery of the vehicle at this time.
8. Locate the step control module and harnesses. **See Photo 7.**
9. Looking under dash on driver side find a area to mount the module without it being into the way of brake and gas pedal and out of harms way. The module shown has been installed onto the under side of the dash by the hood pull with the module tilted up. Use a Torx bit to install. **See Photo 8.**



10. Remove the scuff plate and kick panel. Take care not to damage these panels. **See Photo 9.**
11. Fold the carpet over in the floor exposing the rubber E-brake gromet.
12. Use a razor knife to trim a 3/4 slot into the gromet. **See Photo 10.**



13. Locate the wiring harnesses for the step motors. **See Photo 11.**
14. Connect the motor harness to the step motor on the Driver and Passengers side of the vehicle. **See Photo 12.**



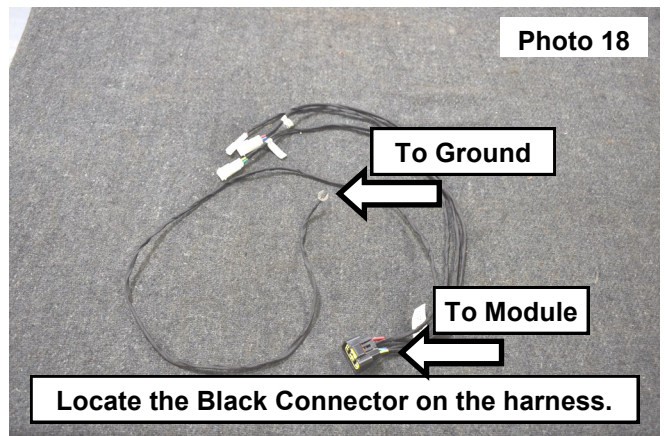
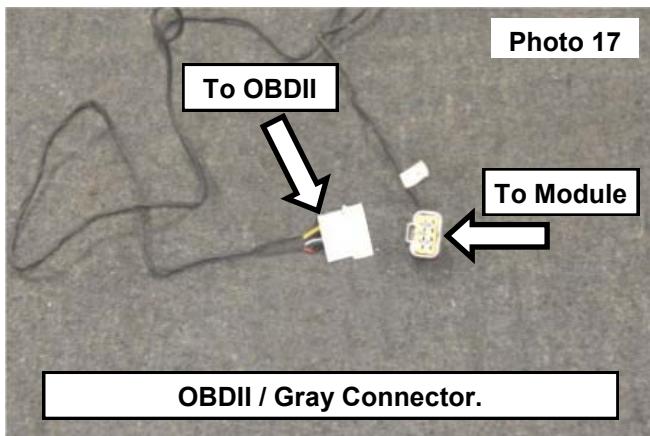
15. Pull the motor and light harness through the 3/4 slot in the E-brake gromet on the driver side. **See Photo 13.**
 16. Remove the scuff plate from the passenger side of the vehicle. **See Photo 14.**



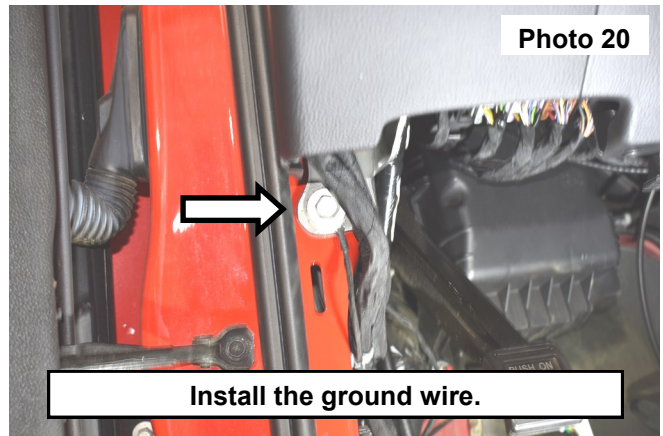
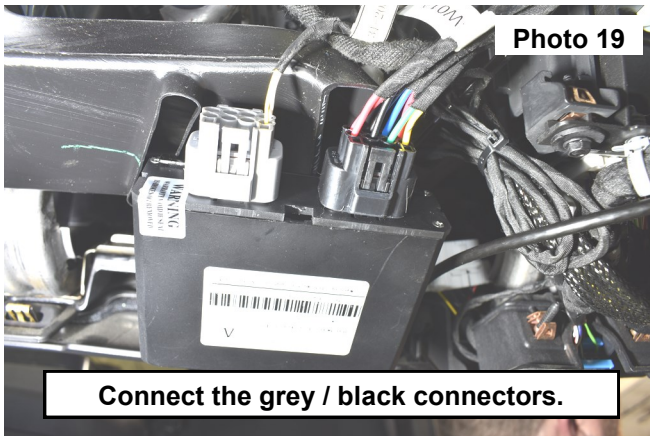
17. Drill a 1/2" hole in the center of the plastic plug in the floor of the passengers side cab floor. **See Photo 15.**
 18. Then install the motor and light harness through the passenger side in the floor. **See Photo 16.**



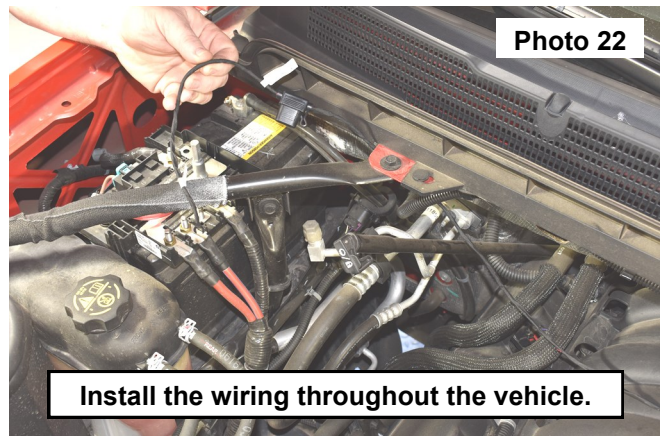
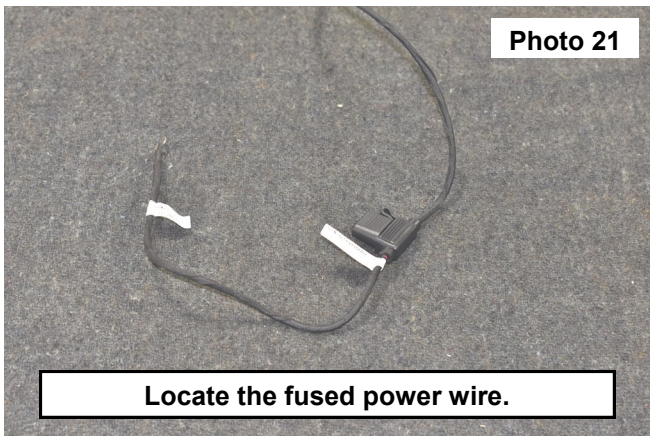
19. Locate the wiring harness shown in **Photos 17 and 18.**



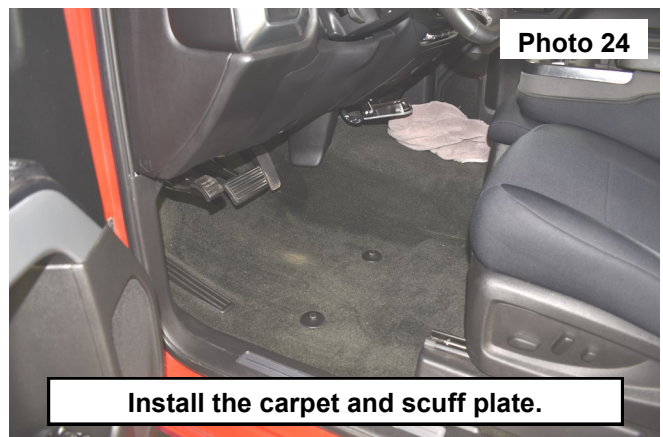
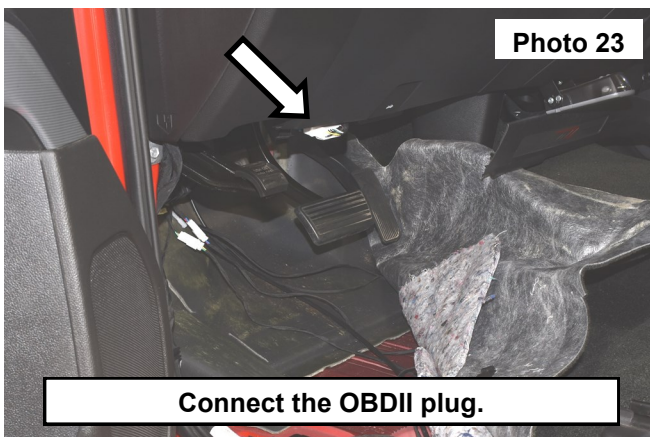
20. Connect the Grey and Black connector to the wiring harness on the module installed under the dash. **See Photo 19.**
21. Connect the Step motor harnesses to the Driver and Passenger plug on the harness connected to the module.
22. Connect the ground wire to the dash bolt behind the kick panel using a 13mm socket. **See Photo 20.**



23. Locate the fused power wire shown in **Photo 21.**
24. Remove the positive battery cover. Install the power wire, route the wire from the battery across fire wall over to driver side fender well. Route wire down fender well and along frame to the grommet and inside the cab and connect to the module harness. Do not attach to the battery at this time. **See Photos 22.**



25. Connect the white OBDII port from the wiring harness to the under the dash to the OE OBDII port. **See Photo 23.**
26. Connect the power wire to the black harness inside of the vehicle. Then install the carpet and scuff Panels on the Driver and Passenger side of the vehicle. **See Photo 24.**



27. Close all doors on the vehicle. Connect the fused power wire to the power block of the vehicle using a 13mm socket. **See Photo 25.** Be sure to tighten the nut to ensure good connection.
28. Test the motors by opening and closing each door to confirm that each door operates the step motor correctly.
29. Open one door on each side. With the motor and idler arms extended outward, install one step board onto the mounts. Center the step on the vehicle when open. **See Photo 26.**



Photo 25

Connect the power supply.



Photo 26

Install the step board.

30. Slide the mounting block under each of the (3) mounts, then secure the step board using (2) of the supplied 6mm socket head bolts and (2) 6mm lock washers in each step mount. **See Photo 27.**
31. Check that the step is center on the vehicle and snug the hardware using a 5mm allen wrench. **See Photo 28.**

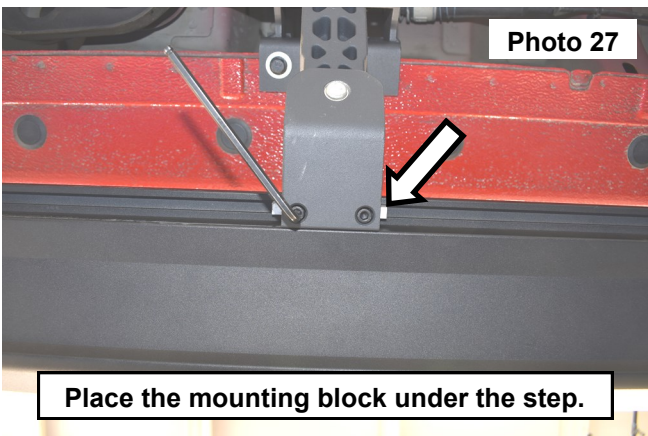


Photo 27

Place the mounting block under the step.

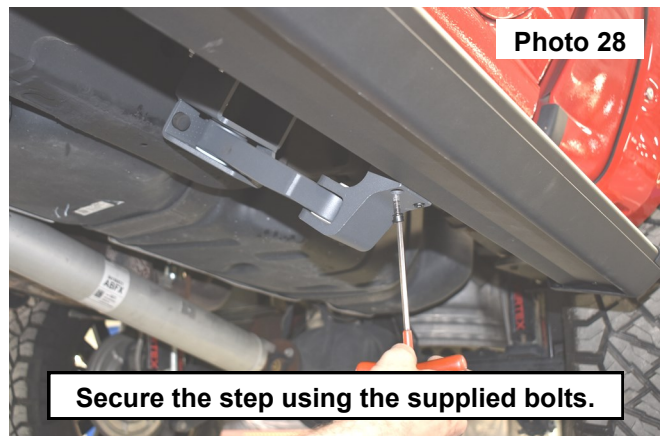


Photo 28

Secure the step using the supplied bolts.

32. Test the step by closing the door. Make sure step does not hit frame and wires are not in harms way.
33. Drill a hole in the step board as shown using a 7/64 bit and secure the wire to the step with the supplied phillips head screws and plastic loom clips. **See Photo 29 and 30.**

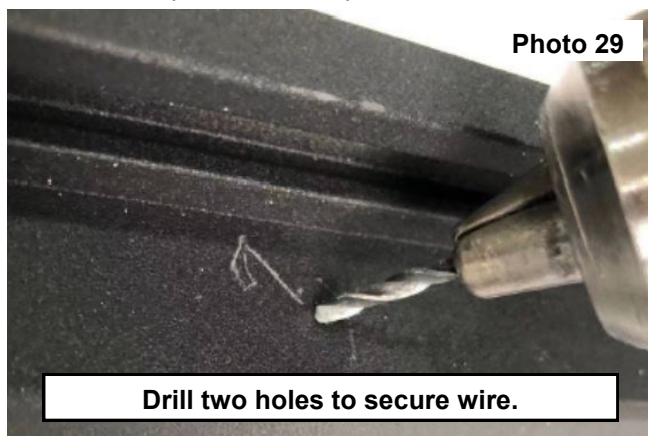


Photo 29

Drill two holes to secure wire.

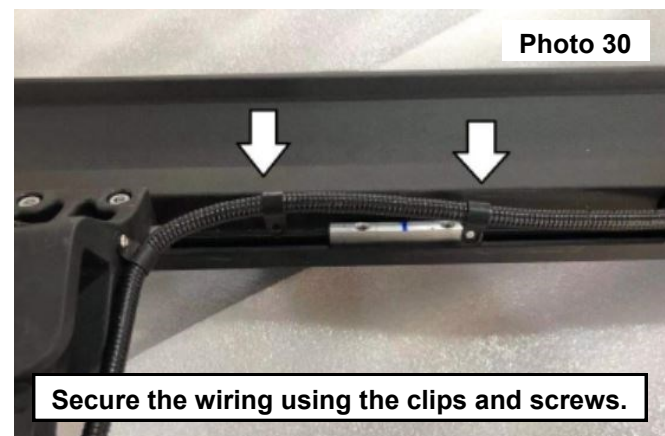
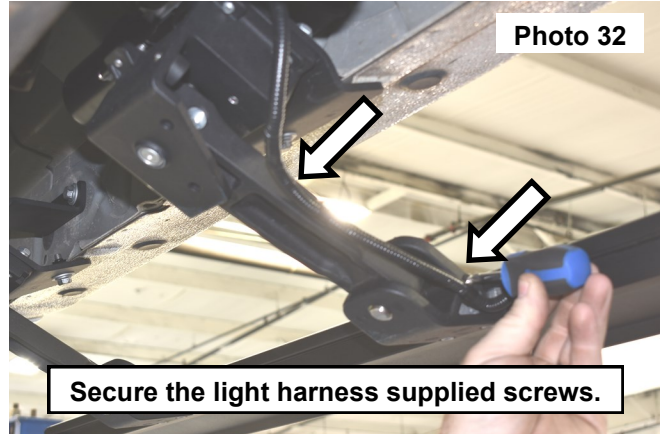
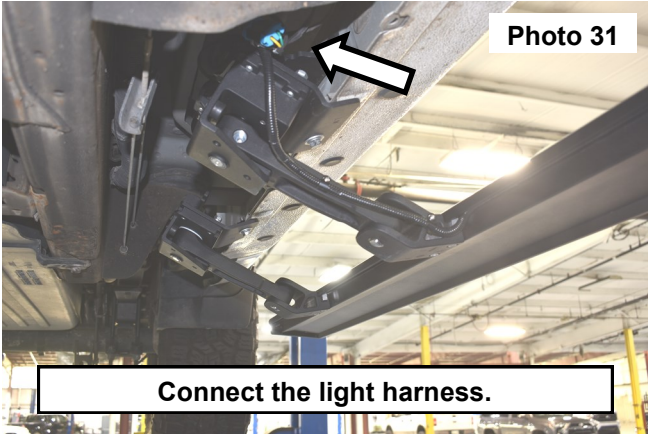


Photo 30

Secure the wiring using the clips and screws.

34. Make sure the step is not in any bind when opening or closing, use shims if needed. This would hinder the step from fully extending or closing. Adjust steps as necessary to get full cycle
35. Tighten the hinge mount to the step brackets using a 13mm socket. Add shims to get desire look if the step needs to be leveled from the front to the rear of the vehicle.
36. Connect the steps lighting wire to the labeled harness. **See Photo 31.**
37. Place the light wiring into the arm clips and secure using (2) of the supplied Phillips screws. **See Photo 32.**



38. Repeat steps 28-36 on the opposite side of the vehicle. Tighten brackets on the body using a 13mm socket.
39. Check all hardware every 500 miles.
40. Double check that all wires are secured with a cable tie and away from exhaust heat.

By purchasing any item sold by Rough Country, LLC, the buyer expressly warrants that he/she is in compliance with all applicable, State, and Local laws and regulations regarding the purchase, ownership, and use of the item. It shall be the buyers responsibility to comply with all Federal, State and Local laws governing the sales of any items listed, illustrated or sold. The buyer expressly agrees to indemnify and hold harmless Rough Country, LLC for all claims resulting directly or indirectly from the purchase, ownership, or use of the items.



