

# ROUGH COUNTRY

## SUSPENSION SYSTEMS®



**WARNING:** This product contains a chemical known to the State of California to cause Cancer and Reproductive Harm. For more information, go to [www.P65Warnings.ca.gov](http://www.P65Warnings.ca.gov).

## 2020-UP GMC SIERRA HD 2500, 3500 NON-DUALY

### PRIOR TO INSTALLATION

- A) Install the flares according to these written instructions with the hardware provided. **WARNING:** Failure to install according to these instructions will invalidate the warranty. This includes, but is not limited to, using alternative installation methods, hardware, or materials. **DO NOT USE:** Loctite, Superglue, or similar products on the hardware or the flares. Install flares on cleaned vehicle surfaces.
- B) **Fit:** Verify the fit of the flares to vehicle prior to installation (some filing, sanding, or cutting may be necessary to ensure proper fit).
- C) **Painting:** (Optional) if paint is desired it must be done prior to installing flares on vehicle. Clean outer surface with a good grade degreaser. **DO NOT USE LACQUER THINNER OR ENAMEL REDUCER AS A DEGREASER.** Wipe outer surface thoroughly with a tack rag prior to paint. Application of plastic adhesion promoter for ABS plastic as per your paint system manufacturer's recommendations is required. Paint flares using a high-quality enamel, or polyurethane automotive paint. If painting edge trim (not recommended), use a flex additive.
- D) **Performance:** Using larger tires may increase the area required to turn the vehicle. Some tire/rim combinations may require lowering bump stops and or installing steering stops to prevent tire from contacting flare.
- E) **Exhaust System:** Modifications may be necessary to maintain a minimum 4" clearance between flares and exhaust pipes. (Exhaust gases should not vent directly onto flares)
- F) **Metal Protection:** All exposed fasteners and bare metal should be treated with rust resistant paint **BEFORE** installing flares. Spray inner fender wells with undercoating **AFTER** flare attachments have been completed.
- G) **Decals:** Flares may interfere with existing decals on vehicle. If you wish, remove decals prior to installation of flares.
- H) **Care & Cleaning:** Fender flares are built to last; any detergent you use to wash your vehicle is sufficient to clean the flare. Do not use any harsh abrasive detergents.

### TOOLS FOR EASY INSTALLATION:

- Soft Cloth or Alcohol Wipes
- 1/2" or 9mm Wrench
- T-15 Torx Bit
- T-20 Torx Bit
- Grease Pencil
- Phillips Screwdriver
- Awl
- Plastic Pry Tool

**PLEASE READ:** Dirt and debris can become lodged between the fender flares and the vehicle's fenders, causing scratching and paint wear from vibration. Manufacturer is not responsible for any damage, and the installation of our fender flares is done with the buyer's understanding that this scratching and paint wear may occur.

**LIMITED LIFETIME WARRANTY AGAINST ANY MANUFACTURING DEFECTS:** To claim warranty you must provide Proof of Purchase.

## INCLUDED IN HARDWARE KIT:

1.



SS Pocket Torx Bolt  
34 pcs

2.



SS Pocket Washer  
34 pcs

3.



Pocket Nylock Nut  
34 pcs

4.



T-45 Torx Bit  
1 pc

5.



Nylon Spacer  
8 pcs

6.



#10 "U" Clip  
16 pcs

7.



#10 Truss Head  
Screw  
16 pcs

8.



Replacement Fender  
Clips  
10 pcs

9.



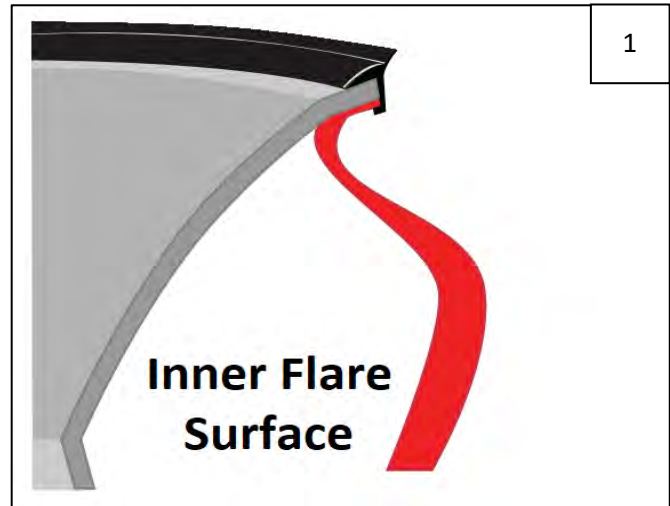
Wiper-Style Edge  
Trim  
352 inches

## SECTION 1: EDGE TRIM INSTALLATION

Using a debris-free soft cloth or alcohol wipe, clean vehicle at areas of installation.

Peel 2-3 inches of red vinyl backing away from supplied edge trim tape. Applying the adhesive side of the edge trim to the inner side of the flare, affix the edge trim to the top edge of the flare (the portion that comes in contact with the side of the vehicle).

Press edge trim into place along the top edge of the flare in one-foot increments, pulling red vinyl backing free as you continue to work your way around the top edge of the flare. Trim edge trim flush with ends of flare.



## SECTION 2: POCKET HARDWARE INSTALLATION



Install a supplied SS Pocket Washer onto each SS Pocket Torx Bolt.



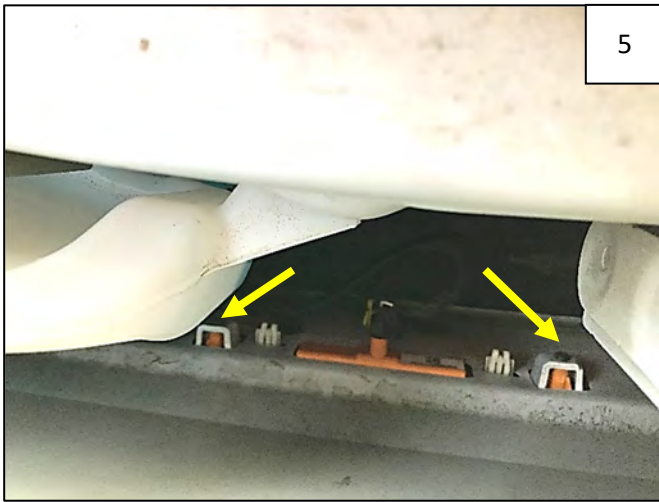
Insert each Bolt/Washer combination through pocket holes in flare, Bolt head and Washer on the outside.



Place a supplied Pocket Nylock Nut over the end of each bolt and tighten using a 1/2" wrench for the Nut and the supplied T-45 Torx Bit for the Bolt. Repeat for all pockets.



### SECTION 3: FRONT FLARE INSTALLATION



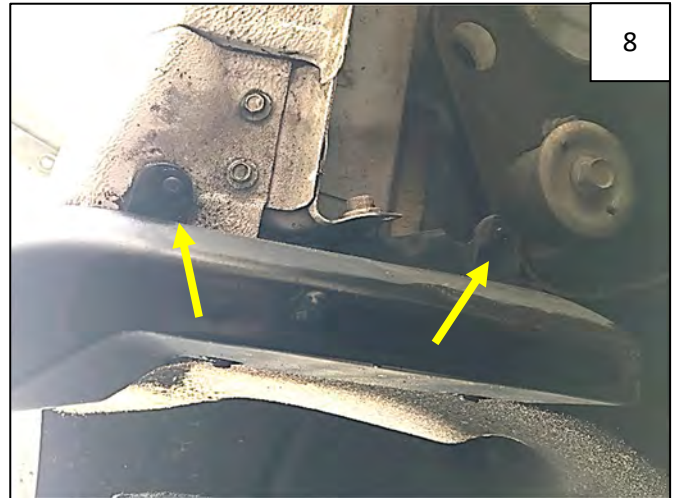
Open Hood. Remove side marker light using a T20 Torx bit (2 screws). Retain screws for future use. **NOTE:** You may remove wheel well liner to access marker light from underneath the vehicle, but this is not recommended.



Disconnect side marker light from wire harness, leaving wire harness connector accessible for reinstallation.



Remove 3 T-15 Torx screws from mud guard at inside rear of wheel well. Retain all screws. **NOTE:** Some screws will be used for flare installation.



Remove 2 T-15 Torx screws from underside of mud guard.



Remove mud guard by prying down and away from vehicle body, disengaging one internal clip. Discard mud guard.



Remove 3 T-15 Torx screws from inside wheel well at locations shown.



11

Install side marker light into fender flare using 2 supplied nylon spacers and screws retained in Step 5. Before tightening, check alignment of light in light pocket. Do not overtighten screws.



12

Hold flare firmly on vehicle. Using a grease pencil, mark 3 clip locations at locations shown. **NOTE:** it may be helpful to loosely install 2 factory screws in lowermost flare holes prior to this step for added stability.



13

Remove flare from fender and slide a supplied #10 "U" Clip flat-side down over each mark made in Step 12, centering on mark and aligning edge of clip with edge of fender lip. Clip holes should be free of interference.



14

Reconnect side marker light to wire harness before installing fender flare.



15

Holding flare firmly on fender, start 4 factory fasteners through holes in flare and into fender at locations shown.



16

Start 3 supplied #10 Truss-Head Screws through holes in flare and into clips installed in Step 13. **NOTE:** Clip locations may be adjusted by hand and/or an awl may be used to align holes prior to screw installation.



Ensure flare fit. Apply pressure and tighten all screws.

#### SECTION 4: REAR FLARE INSTALLATION



Remove 3 T-15 Torx screws from front mud guard at inside front of wheel well. Retain all screws. **NOTE:** Some screws will be used for flare installation.



Remove 2 T-15 Torx screws from underside of front mud guard. Disengage lower clip and remove and discard mud guard.



Remove 3 T-15 Torx screws from rear mud guard at inside rear of wheel well. Retain all screws. **NOTE:** Some screws will be used for flare installation.



Remove 2 T-15 Torx screws from underside of rear mud guard. Disengage metal clip and remove and discard mud guard.



22

Carefully pry factory flare away from vehicle, starting at lower front or rear and working up to top center, taking care not to break factory clips if possible. Pry any remaining clips from fender using a plastic pry tool.



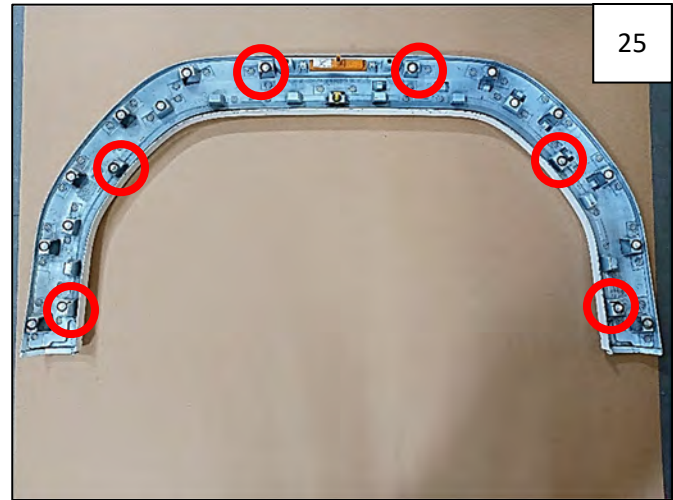
23

Unclip wire harness from factory flare.



24

Disconnect and remove side marker light from factory flare using a T-20 Torx bit. Retain screws.



25

Replace any broken clips in factory flare – circled locations are most critical in case more than 10 clips were broken.



26

Reroute wire harness in factory flare. **NOTE:** Make sure light connector is pulled through factory flare and accessible for reconnection.



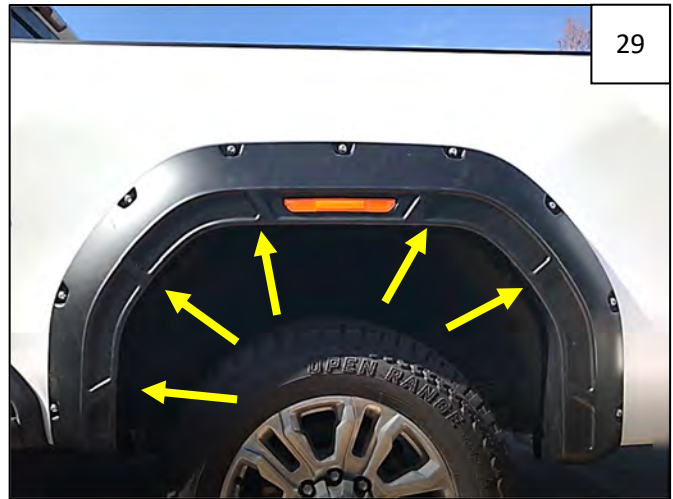
27

Reinstall factory flare by engaging clips, making sure the wheel well liner lip is tucked inside lip of flare. Press firmly to engage clips. Light connector must be accessible.



28

Install side marker light into fender flare using 2 supplied nylon spacers and screws retained in Step 24. Before tightening, check alignment of light in light pocket. Do not overtighten screws.



29

Hold flare firmly on vehicle. Using a grease pencil, mark 5 clip locations at locations shown. **NOTE:** it may be helpful to loosely install 2 factory screws in lowermost flare holes (front flare hole is on underside of vehicle) prior to this step for added stability.



30

Remove flare from fender and slide a supplied #10 "U" Clip flat-side down over each mark made in Step 29, centering on mark and aligning edge of clip with edge of fender lip. Clip holes should be free of interference.



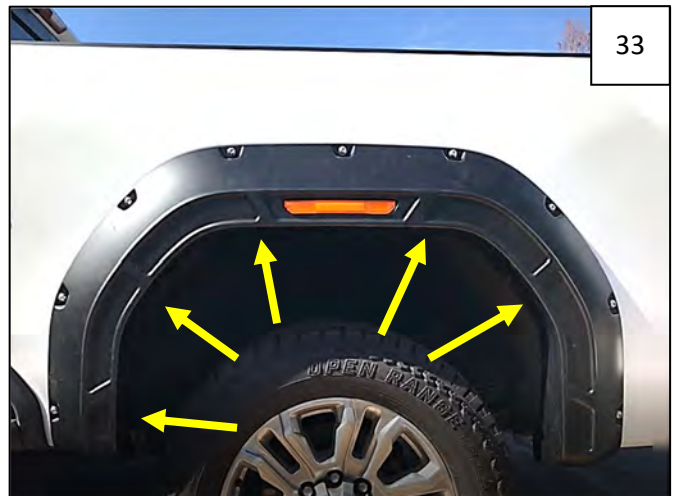
31

Reconnect side marker light to wire harness before installing fender flare.



32

Holding flare firmly on fender, start 2 factory fasteners through holes in flare and into fender at locations shown.



33

Start 5 supplied #10 Truss-Head Screws through holes in flare and into clips installed in Step 30. **NOTE:** Clip locations may be adjusted by hand and/or an awl may be used to align holes prior to screw installation.





Ensure flare fit and tighten all screws, applying firm pressure to flare.