

ROUGH COUNTRY

SUSPENSION SYSTEMS®

929903700

JEEP 2007-18 JK High Flat Fender Kit

Thank you for choosing Rough Country for all your vehicle needs.

Please read instructions before beginning installation. Check the kit hardware against the kit contents shown below. Be sure you have all needed parts and know where they go.

If question exist, please call us @1-800-222-7023. We will be happy to answer any questions concerning this product. Check all fasteners for proper torque. Check to ensure for adequate clearance between all components. Periodically check all hardware for tightness.

NOTE: It is recommended to use an inner fender kit with the addition of these high clearance fenders. Rough Country offers these products. Part #'s 10531 and 10532.

KIT CONTENTS:

- Front Driver Fender x1
- Front Pass Fender x1
- Rear Driver Fender x1
- Rear Pass Fender x1
- Fr Amber Signal Lights x2
- 99037Bag x1

99037Bag Contents:

- 6mm Threaded Nut Sert x 36
- 6mm x 20mm Bolt x 36
- 6mm Flat Washer x 36

TOOLS NEEDED:

- 4mm Allen Wrench
- 10mm Wrench or Socket
- 27/64 Bit
- Drill Motor
- Wire Stripping Tool
- Butt Connectors
- Crimping Tool



Torque Specs:

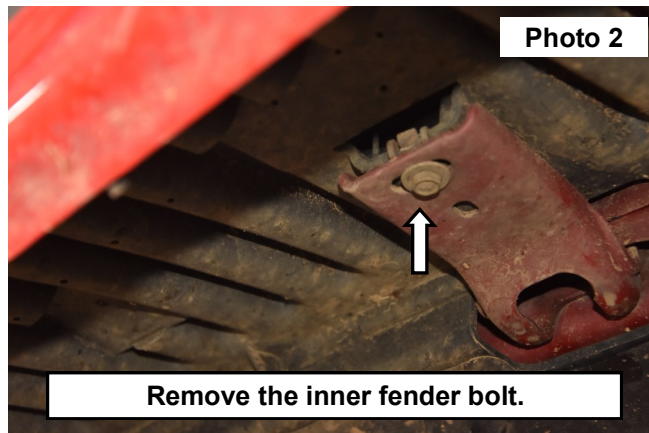
Size	Grade 5	Grade 8	Size	Class 8.8	Class 10.9
5/16"	15 ft/lbs	20ft/lbs	6MM	5ft/lbs	9ft/lbs
3/8"	30 ft/lbs	35ft/lbs	8MM	18ft/lbs	23ft/lbs
7/16"	45 ft/lbs	60ft/lbs	10MM	32ft/lbs	45ft/lbs
1/2"	65 ft/lbs	90ft/lbs	12MM	55ft/lbs	75ft/lbs
9/16"	95 ft/lbs	130ft/lbs	14MM	85ft/lbs	120ft/lbs
5/8"	135ft/lbs	175ft/lbs	16MM	130ft/lbs	165ft/lbs
3/4"	185ft/lbs	280ft/lbs	18MM	170ft/lbs	240ft/lbs



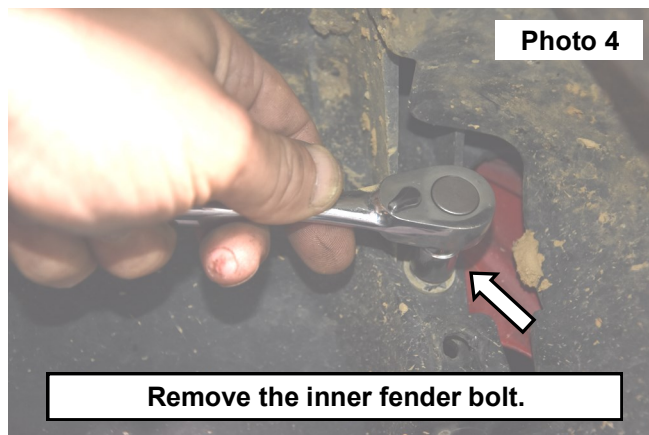
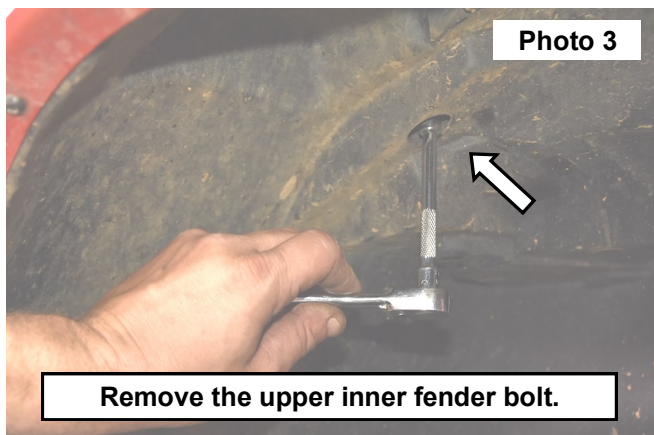
FRONT INSTALLATION INSTRUCTONS

Front Flare Installation

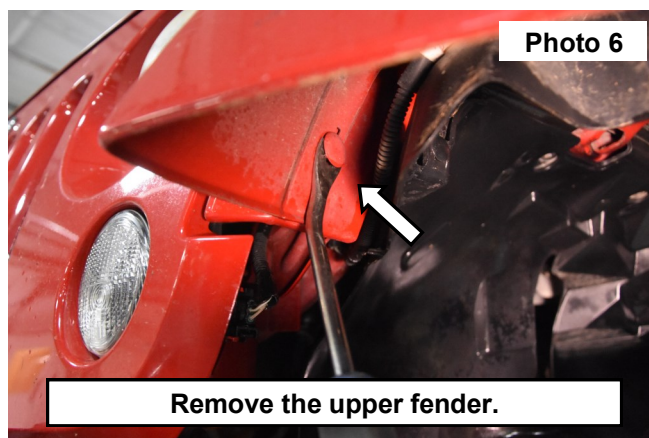
1. Disconnect the side parking light wire from the fender. **See Photo 1.**
2. Remove the bolt in the fender bracket. Using a 10mm socket. **See Photo 2.**



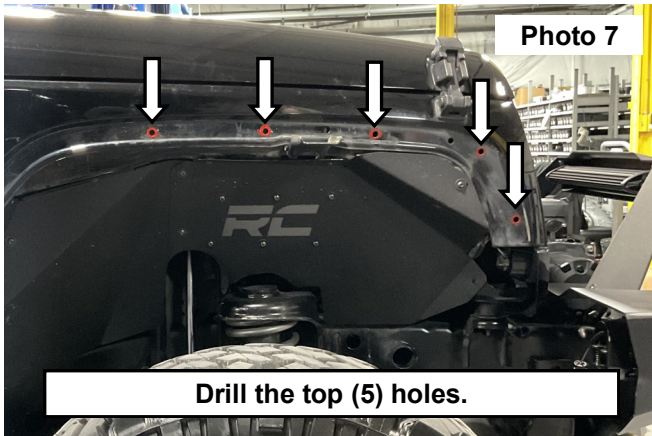
3. Remove the bolt in the front inner fender well, using a 10mm socket. **See Photo 3.**
4. Remove the 2 bolts on the bottom side of the inner fender well, using a 10mm socket. **See Photo 4.**



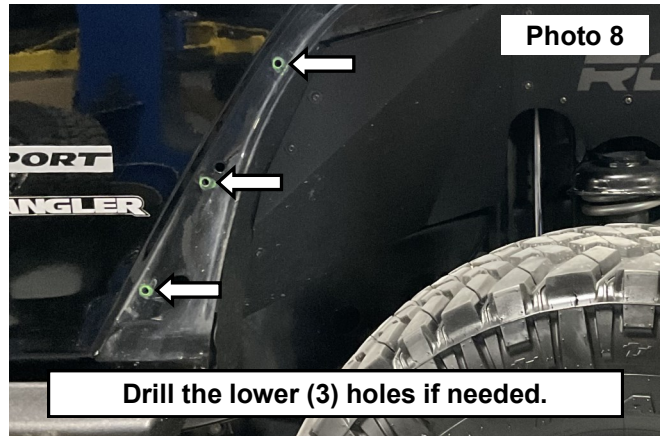
5. Remove the fender from the vehicle, start at the bottom removing the clips working your way up. **See Photos 5 and 6.**



6. Drill the top (5) holes in the fender using a 27/64 bit to fit the nutsert. **See Photo 7.**
7. Do not drill the rear fender holes if you are installing the optional RC inner fender kit, If not skip to **Step 8.**
8. If not installing the inner fender kit drill the remaining (3) holes as shown in **Photo 8** in the lower fender using a 27/64" bit.



Drill the top (5) holes.



Drill the lower (3) holes if needed.

9. Install the nutserts using the supplied hardware or a nutsert tool in the drilled holes. **See Photo 9.**
10. Install inner fender at this time if using the optional metal inner fender, if not skip to step 11. **See Photo 10.**

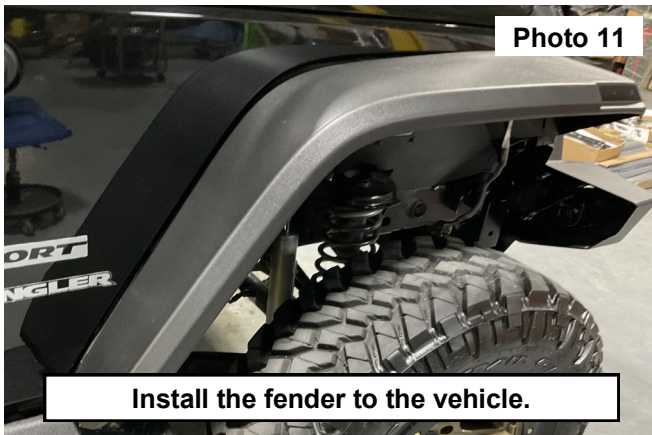


Install the nutserts.

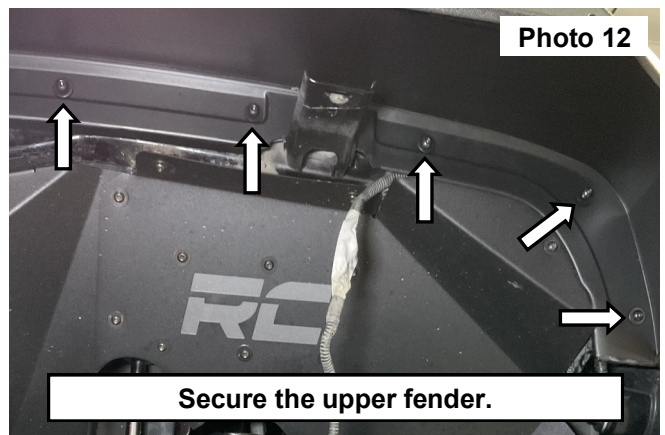


Install the inner fender if applicable

11. Install the fender flare on to the vehicle and secure the top using the (5) supplied 6mm button head bolts. **See Photos 11 and 12.**

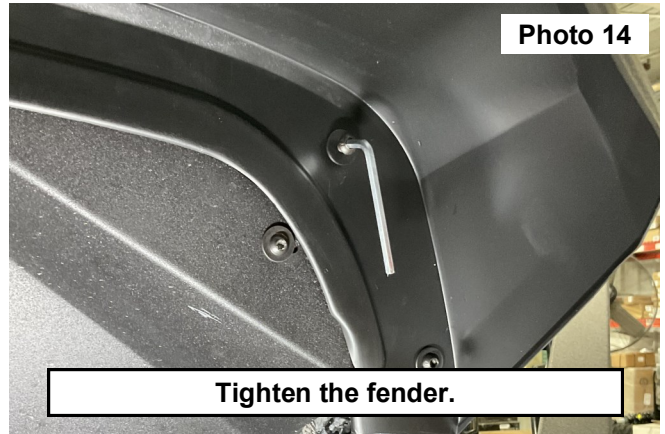
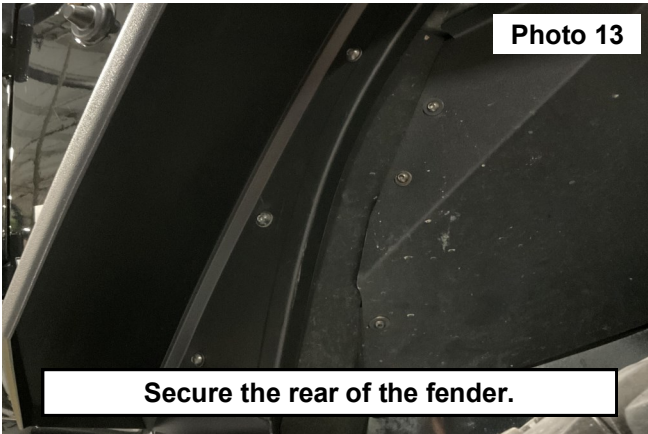


Install the fender to the vehicle.

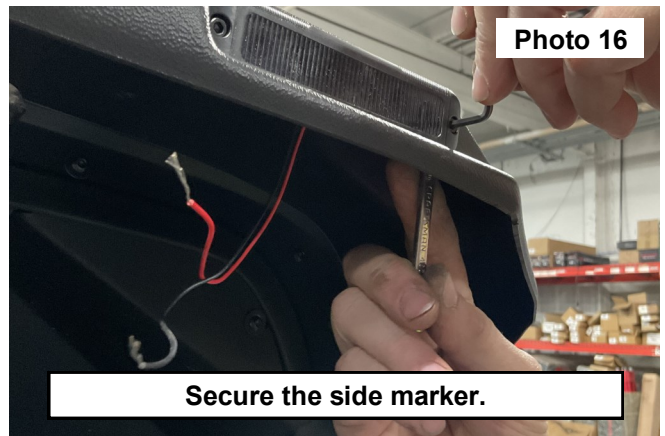
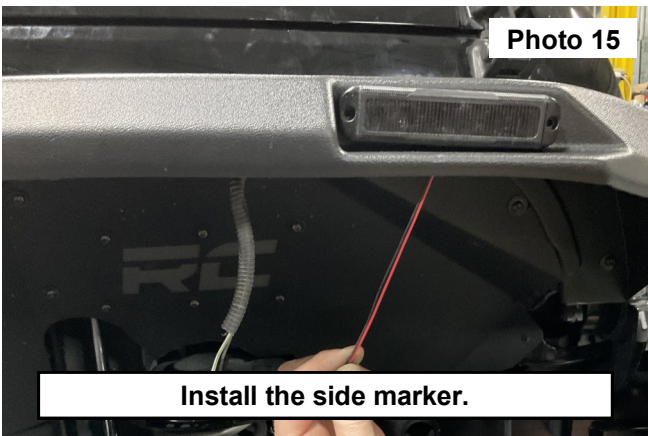


Secure the upper fender.

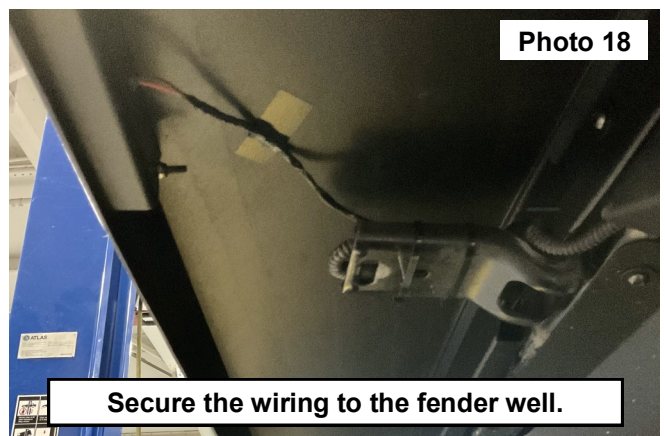
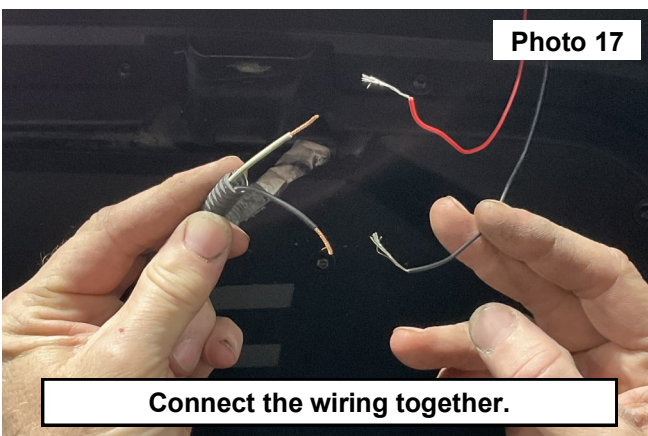
- Secure the rear of the fender using (3) of the supplied 6mm button head bolts and (3) 8mm flat washers into the nutserts as shown in **Photo 13**. If the optional metal inner fender kit has been installed use the supplied hardware for the clips.
- Tighten the fender to the vehicle using a 4mm Allen wrench. **See Photo 14**.



- Install the side marker lighting wire through the hole in the fender. **See Photo 15**.
- Secure the side marker using (2) the supplied 6mm Allen bolts, 6mm flat washers and 6mm and nylock nuts. **See Photo 16**.

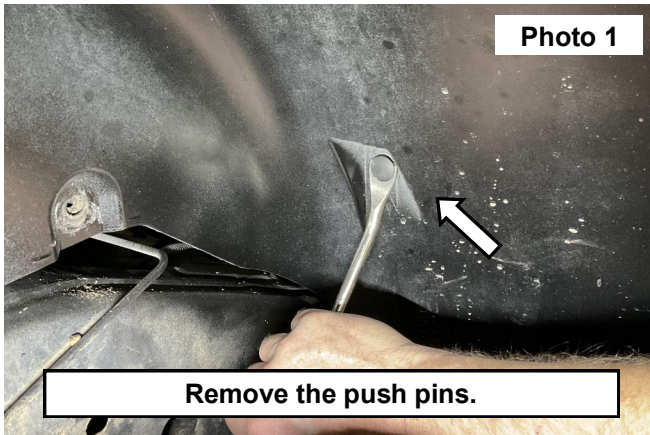


- Clip the OE light plug from the harness and strip the wires. Secure wires with butt connectors. **See Photo 17**.
- Secure the wires up to the fender brace. **See Photo 18**.

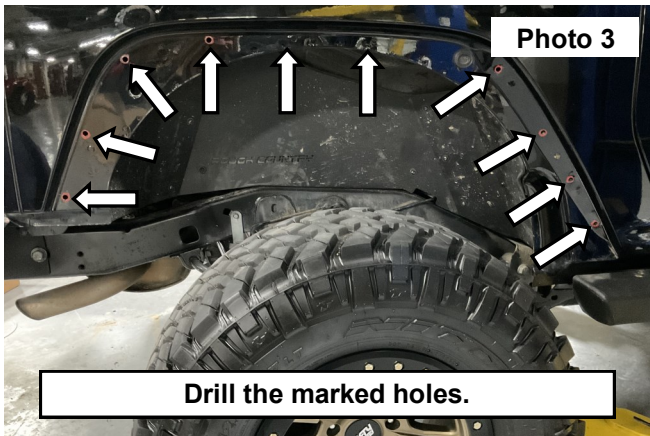


REAR INSTALLATION INSTRUCTONS

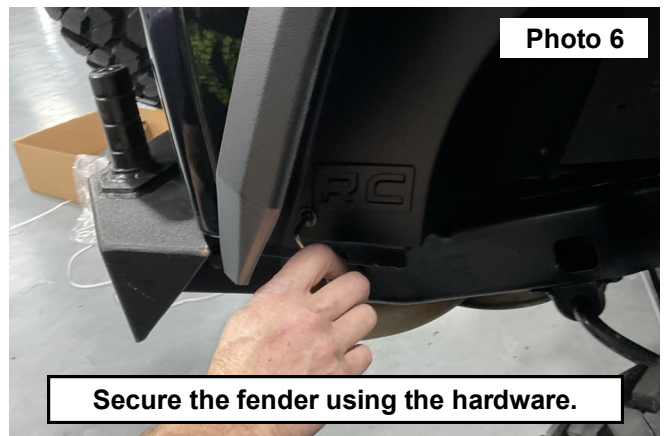
1. Remove the push pins securing the inner fender to the vehicle. **See Photo 1.**
2. Pull from the bottom of the fender, releasing the tabs around the fender and remove from the vehicle. **See Photo 2.**



3. Remove any push pins that may have not been removed with the fender.
4. Drill the marked holes using a 27/64 bit. **See Photo 3.**
5. Install the (10) nutserts using the supplied hardware or a nutsert tool in the drilled holes. **See Photo 4.**



6. Install the fender onto the vehicle using the (10) supplied 6mm bolts and 6mm washers. **See Photos 5 and 6.**
7. Tighten using a 4mm Allen wrench.





By purchasing any item sold by Rough Country, LLC, the buyer expressly warrants that he/she is in compliance with all applicable, State, and Local laws and regulations regarding the purchase, ownership, and use of the item. It shall be the buyers responsibility to comply with all Federal, State and Local laws governing the sales of any items listed, illustrated or sold. The buyer expressly agrees to indemnify and hold harmless Rough Country, LLC for all claims resulting directly or indirectly from the purchase, ownership, or use of the items.

