

GM 2014-18 Chevy / GMC 1500 Cat Back Performance Exhaust System

Fits 4.3L, 5.3L Engine / 143.5, 157.5 Wheelbase / Crew Cab & Extended Cab

Congratulations on your purchase of a Rough Country Performance Exhaust system.

Please read instructions before beginning installation. Check the kit hardware against the kit contents shown below. Be sure you have all needed parts and know where they go.

If question exist, please call us @1-800-222-7023. We will be happy to answer any questions concerning this product.

Check all fasteners for proper torque. Check to ensure for adequate clearance between all components.

Periodically check all hardware for tightness.

Allow adequate time for the exhaust to cool before disassembly.

NOTICE: Please see info below for various CAB/BED options.

Crew Cab & Extended cab w/5.5' Bed. Do not use extension pipe "C".

Crew Cab & Extended Cab w/6.5' Bed. Install tube extension "C" with supplied clamp.

Does not fit Crewcab 2wd with factory two piece driveshaft.

KIT CONTENTS:

Exhaust Clamps x7
Inlet Tube x1 (A)
Mid Tube x1 (B)
6.5' Bed Extension tube x1 (C)
Muffler x1 (D)
Right Side Exit Tube x1 (E)
Left Side Exit Tube x1 (F)
Exhaust Frame Mount x1 (G)
Poly exhaust Hanger x1 (H)
Left Side Down Tube x1 (I)
80 Deg. Exit Tubes x2 (J)
(Black) Exhaust Tips x2 (K)

TOOLS NEEDED:

10mm Socket
13mm Socket
16mm Socket
9/16 Wrench and Socket

HARDWARE INCLUDED:

3/8-16 x 1.25 Hex Head Bolt x1
3/8 Flat Washers x2
3/8-16 Hex Nut x1
7/16" Hanger Keeper x2
1/2" Hanger Keeper x5
3" Band Clamp x2
2 1/2 Band Clamp x5
2 1/2" Band Clamp Hanger x1

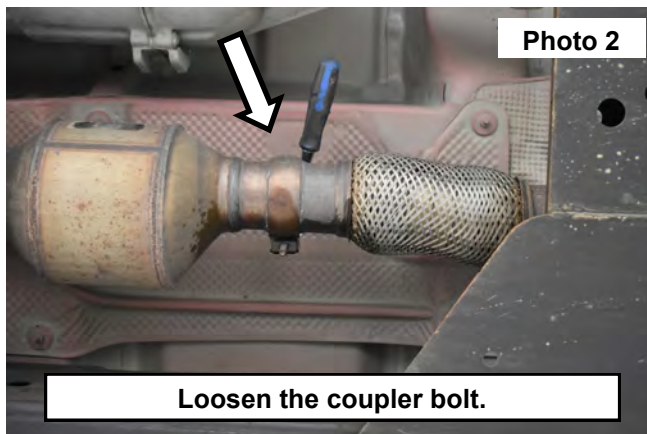
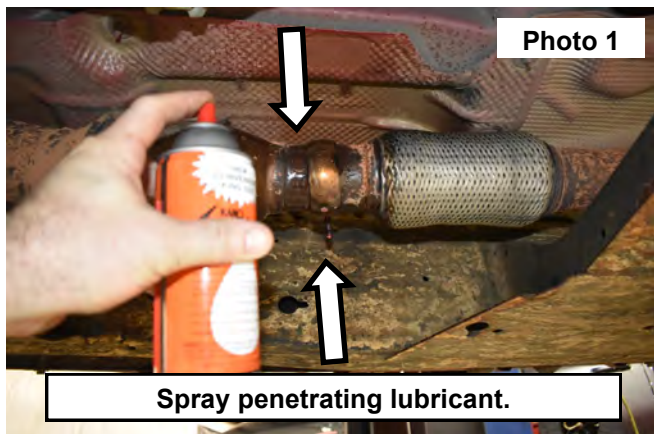
Torque Specs:

Size	Grade 5	Grade 8	Size	Class 8.8	Class 10.9
5/16"	15 ft/lbs	20ft/lbs	6MM	5ft/lbs	9ft/lbs
3/8"	30 ft/lbs	35ft/lbs	8MM	18ft/lbs	23ft/lbs
7/16"	45 ft/lbs	60ft/lbs	10MM	32ft/lbs	45ft/lbs
1/2"	65 ft/lbs	90ft/lbs	12MM	55ft/lbs	75ft/lbs
9/16"	95 ft/lbs	130ft/lbs	14MM	85ft/lbs	120ft/lbs
5/8"	135ft/lbs	175ft/lbs	16MM	130ft/lbs	165ft/lbs
3/4"	185ft/lbs	280ft/lbs	18MM	170ft/lbs	240ft/lbs

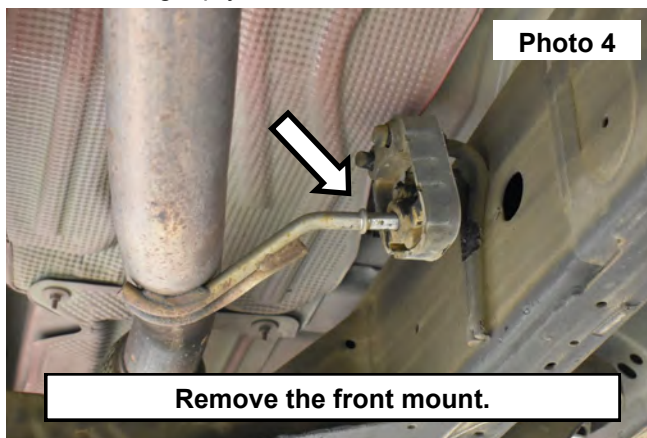
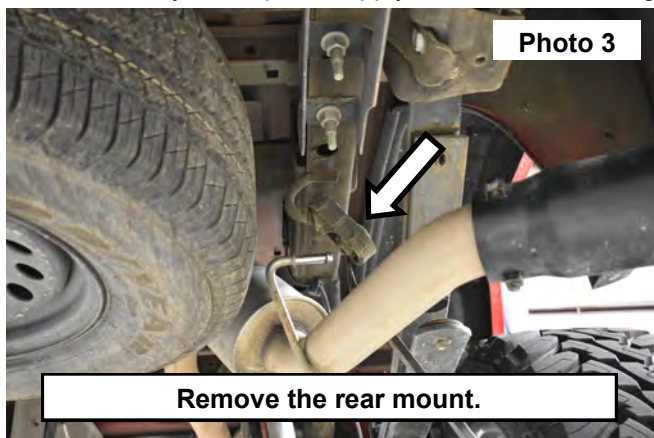


INSTALLATION INSTRUCTONS

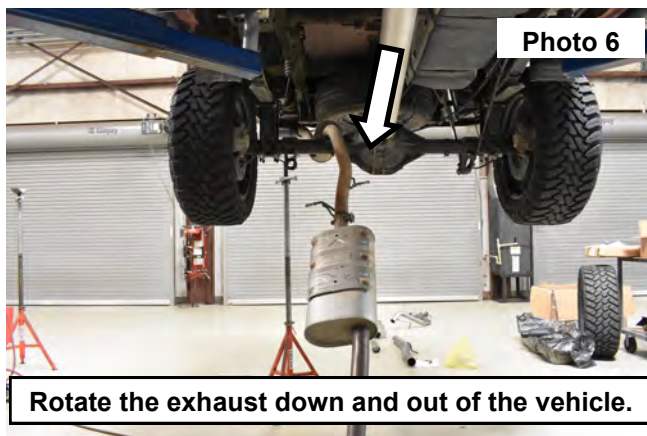
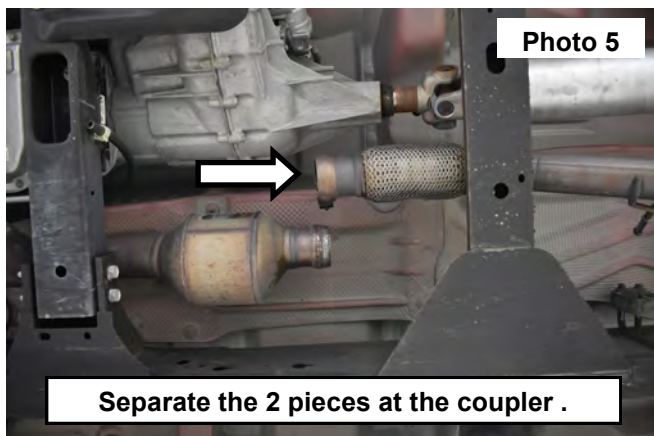
1. After stock exhaust has adequately cooled, It may be necessary to spray a penetrating lubricant on the exhaust coupler and use a wire brush if there is rust buildup around the threads. **See Photo 1.**
2. Loosen the exhaust coupler using a 13mm wrench. **See Photo 2.** *NOTE: The coupler is attached to the flex tube side. This will be removed in a later step.*



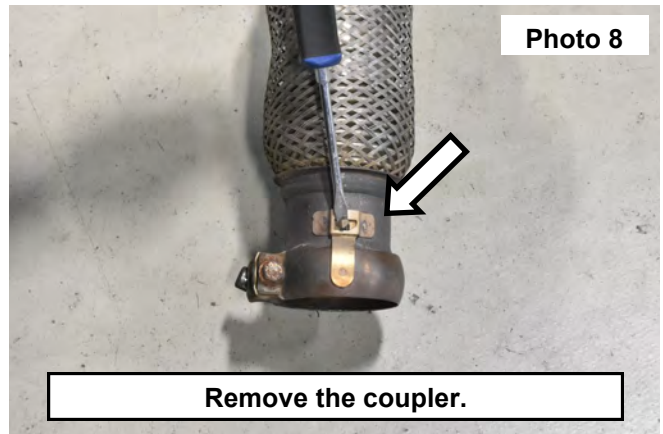
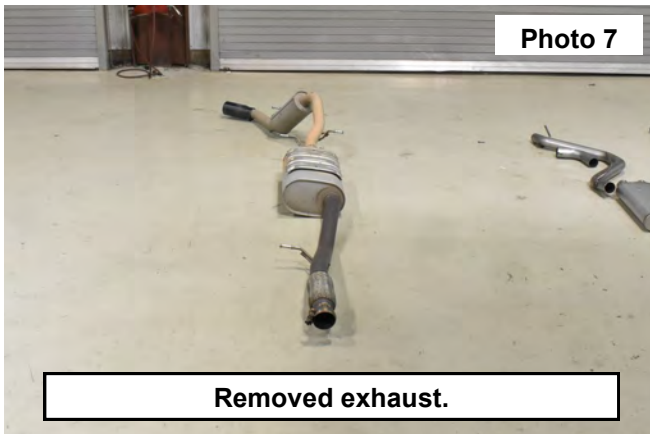
3. Remove the rear to the front exhaust mounts from the rubber hangers leaving the rubber mount on the vehicle for reuse. It may be helpful to apply lubricant to the hanger and remove using a pry tool. **See Photos 3 and 4.**



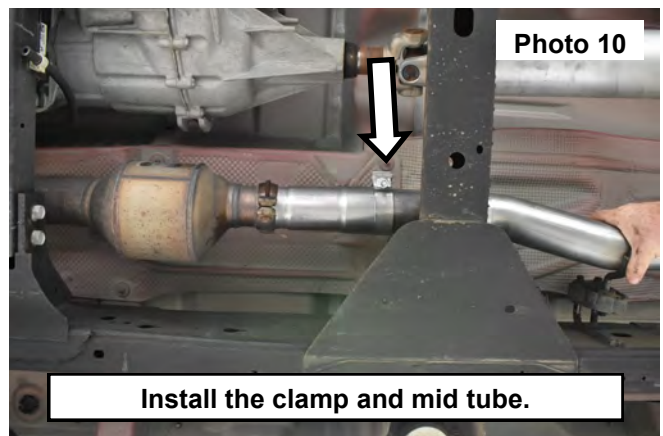
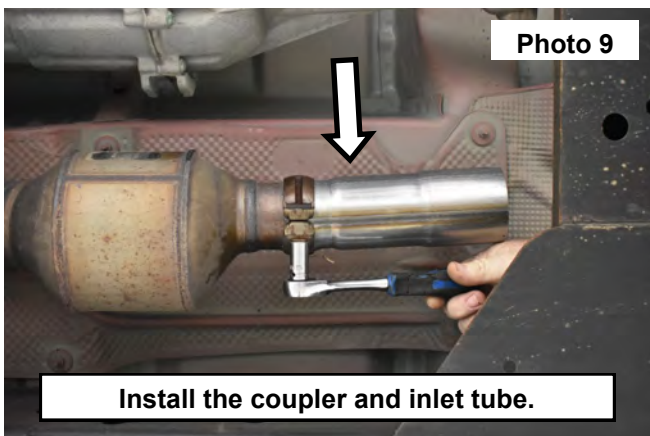
4. Separate the 2 pieces at the coupler moving the exhaust to the rear of the vehicle past the front crossmember. **See Photo 5.**
5. Once the front of the exhaust has been moved back far enough to clear the crossmember. Lower the exhaust down and rotate the rear portion of the exhaust forward over the axle removing it from the vehicle. **See Photo 6 and 7.**



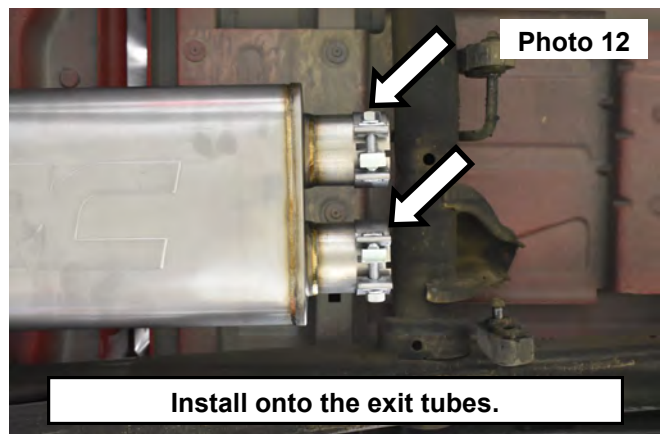
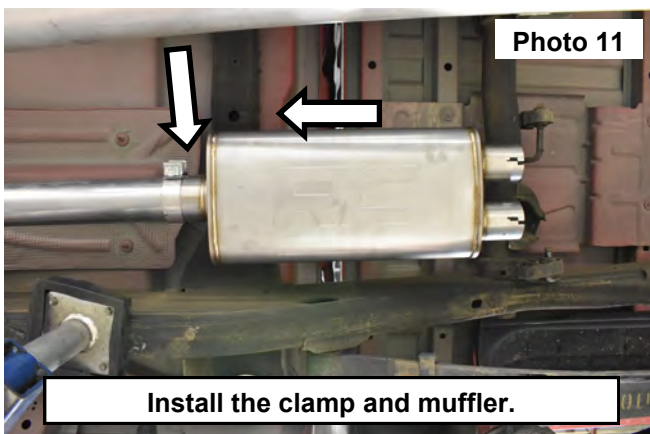
6. Remove the coupler from the flex tube using a pry tool to lift the tab up. Then remove the coupler. **See Photo 8.**



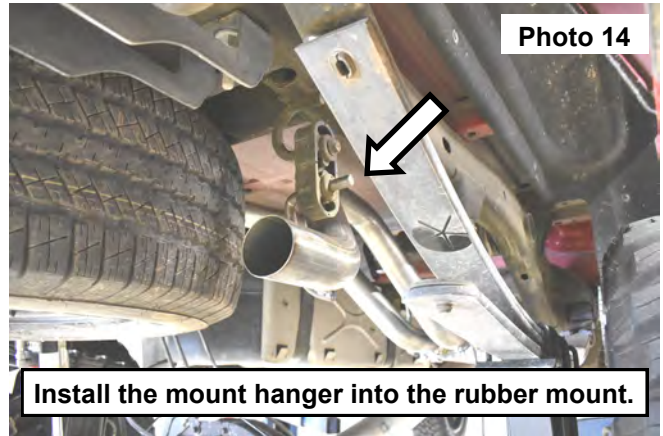
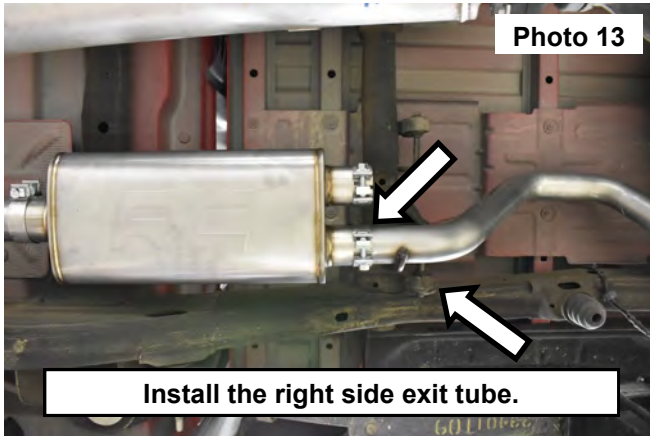
7. Install the coupler onto the inlet tube "A" and the catalytic converter. Using a 13mm wrench snug the clamp so the inlet tube can still be adjusted. **See Photo 9.**
8. Install a clamp at the end of the inlet tube. Then install the mid tube "B" into the rear of the inlet tube and secure the mid tube mount to the OE rubber hanger on the frame. **See Photo 10.** Snug the clamp using a 16mm socket.



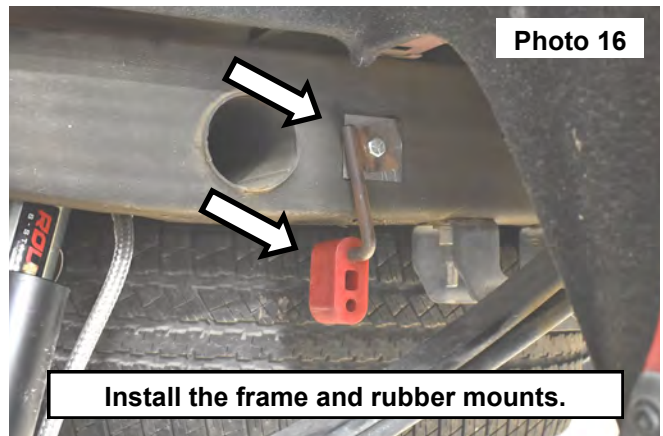
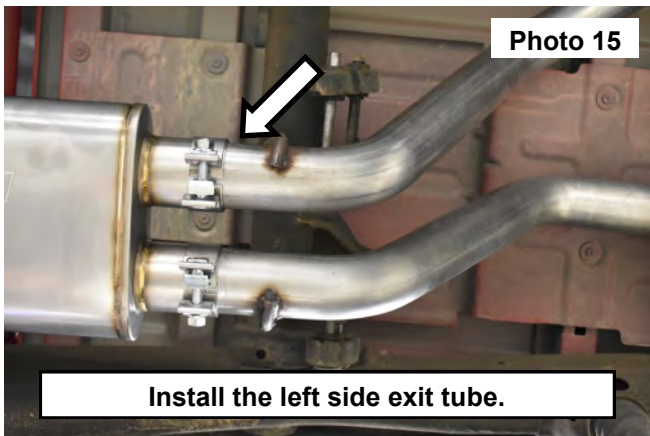
9. For Crew Cab/Extended Cab Models with 6.5' bed, install the supplied extension pipe "C" and secure with supplied clamp.
10. Using a support if needed, place the muffler "D" on the pipe and install a clamp at the end of the mid tube and the muffler. Snug the clamp using a 16mm socket. **See Photo 11.**
11. Install the 2 clamps onto the rear of the exit tubes of the muffler. **See Photo 12.**



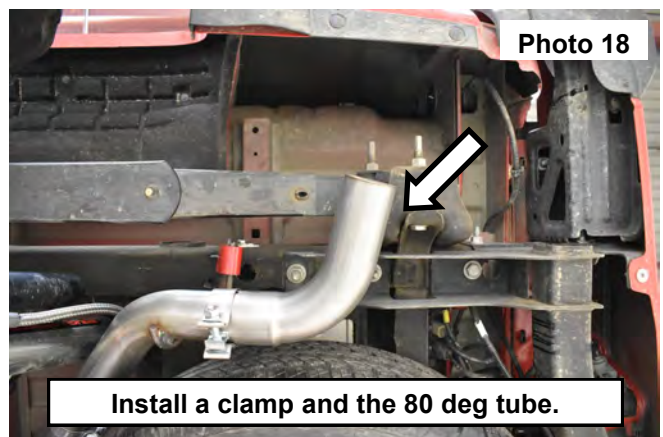
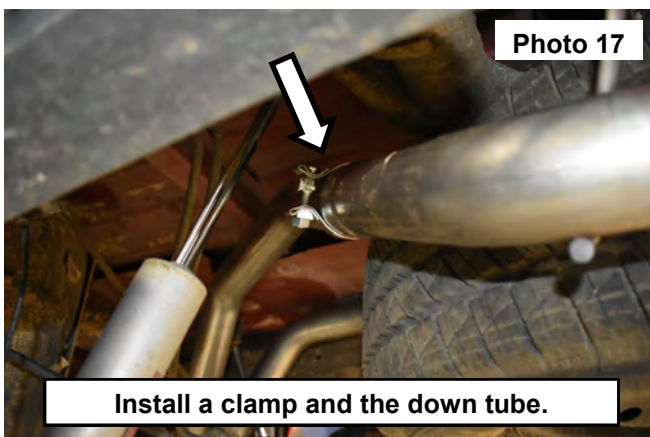
12. Install the right side exit tube "E" into the muffler. Secure the tube by installing into the stock rubber isolators on the frame. **See Photo 13 and 14.**



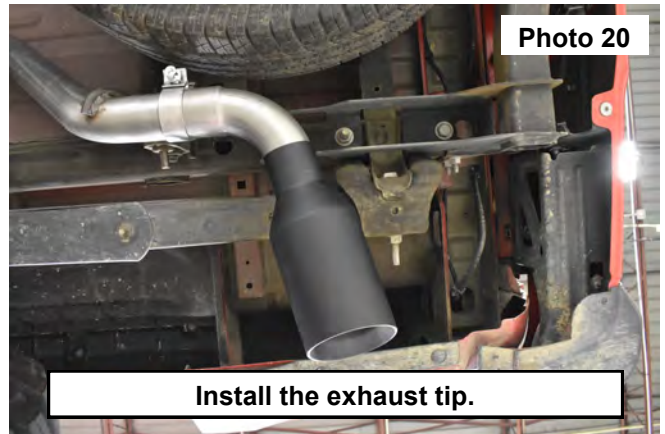
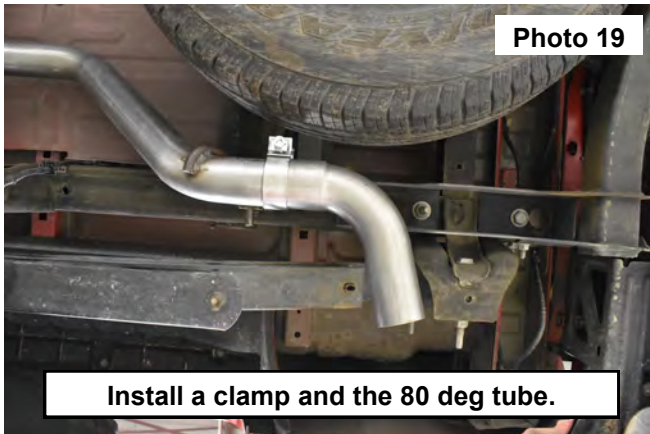
13. Install the left side exit tube "F" into the muffler, snug the clamp to secure the tube. **See Photo 15.**
14. For the driver side pipe, install the frame mount "G" and the rubber hanger "H" using the supplied 3/8-16 x 1.25 hex head bolt (2) 3/8 flat washers (1) 3/8-16 nylock nut. **See Photo 16.**



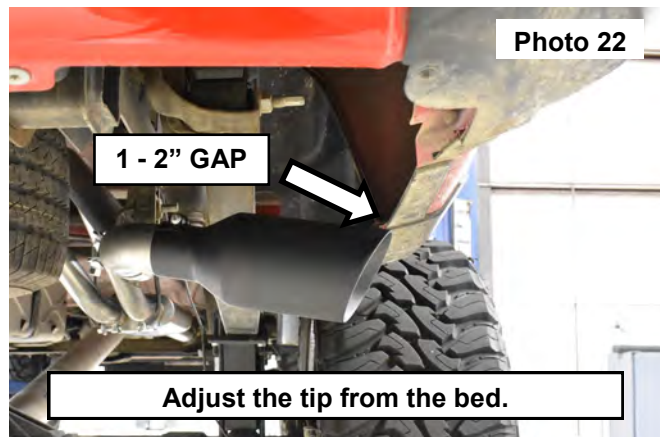
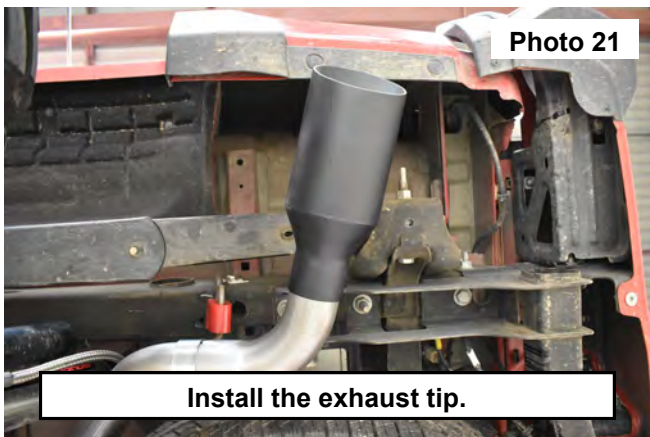
15. Install a clamp onto the right side exit tube. Then install the down tube "I" into the rubber mount installed onto the frame. Snug the clamp using a 16mm socket. **See Photo 17.**
16. Install a clamp and the left side 80 deg tube "J" onto the down tube. Snug the clamp using an 16mm socket. **See Photo 18.**



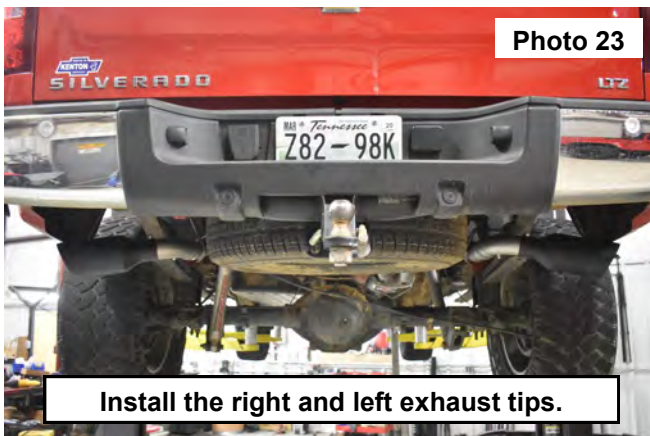
17. Install a clamp and the right side 80 deg tube “J” onto the down tube. Snug the clamp using a 16mm socket. **See Photo 19.**
18. Install the right and left exhaust tips “K” onto the 80 deg tube. Tighten the tip using a 10mm socket. **See Photo 20 and 21.**



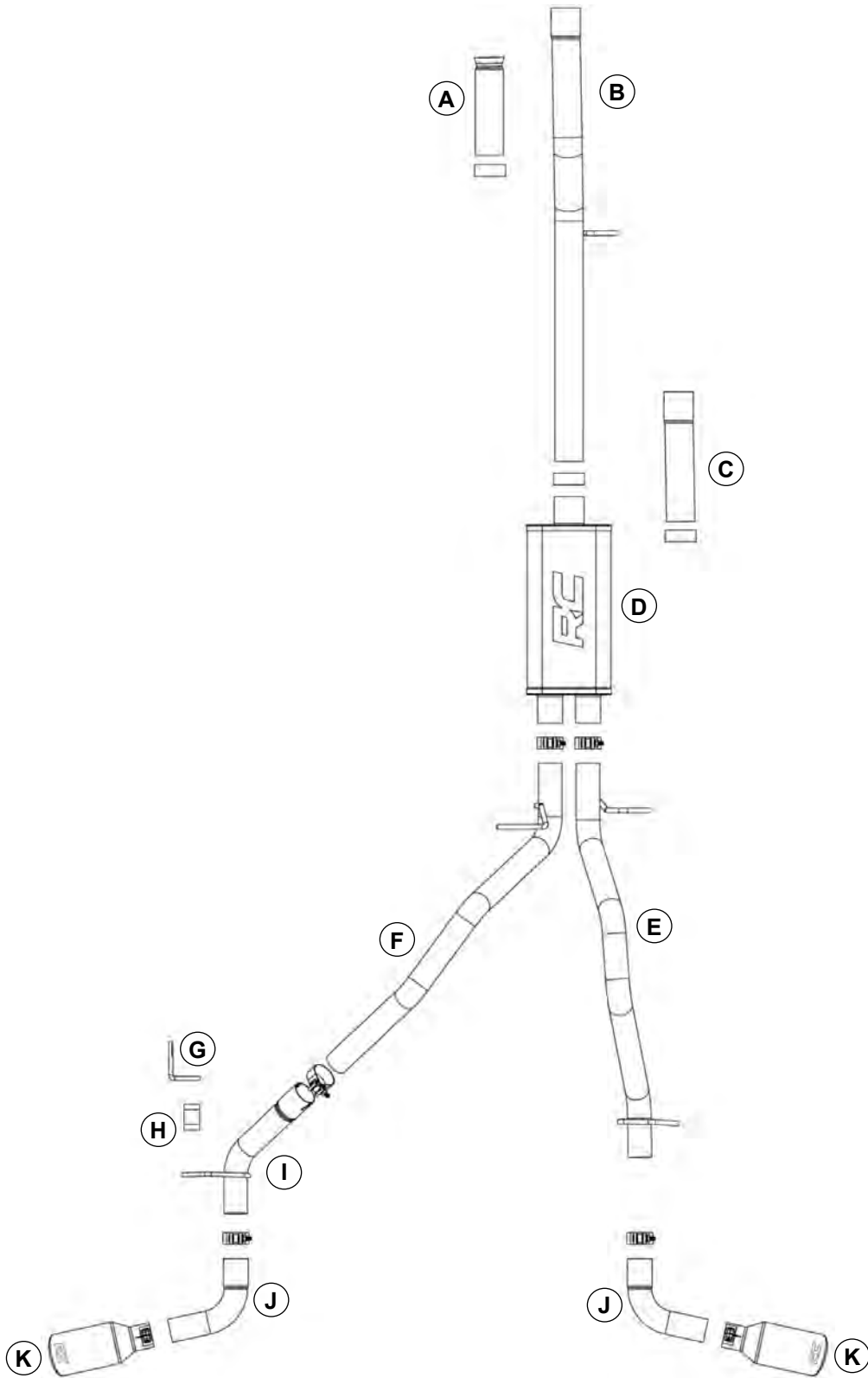
19. Adjust the 80 deg pipe leaving the tip 1 - 2” away from the edge of the bottom of the bed, Leave the tip enough area not to contact the bed when the vehicle is in motion. **See Photo 22 and 23.**



20. Tighten the front clamp using a 13mm socket.
21. Tighten all of the installed clamps throughout the exhaust system using a 16mm socket.
22. Tighten the exhaust tips using a 10mm socket. **See Photo 23.**
23. Install the supplied retainer clips onto the tube hangers installed through the rubber exhaust hangers. **See Photo 24.**
24. Check to ensure adequate clearance between exhaust and all other components. Adjust as necessary.



25. Periodically check all hardware for tightness.



By purchasing any item sold by Rough Country, LLC, the buyer expressly warrants that he/she is in compliance with all applicable, State, and Local laws and regulations regarding the purchase, ownership, and use of the item. It shall be the buyers responsibility to comply with all Federal, State and Local laws governing the sales of any items listed, illustrated or sold. The buyer expressly agrees to indemnify and hold harmless Rough Country, LLC for all claims resulting directly or indirectly from the purchase, ownership, or use of the items.

