

ROUGH COUNTRY
SUSPENSION SYSTEMS®

921820000



82000BAG

27.11
(688.7 mm)

NISSAN 2016-20 Titan Non XD EXO Bumper

Thank you for choosing Rough Country for all your vehicle needs.

Please read instructions before beginning installation. Check the kit hardware against the kit contents shown below. Be sure you have all needed parts and know where they go.

If question exist, please call us @1-800-222-7023. We will be happy to answer any questions concerning this product.

Check all fasteners for proper torque. Check to ensure for adequate clearance between all components.

Periodically check all hardware for tightness.

▲ NOTICE Rough Country LED lights are for off-road use only.

If factory equipped, winch bumper may interfere with parking, proximity and external cruise control sensors.

▲ NOTICE Only fits Non XD Models!

KIT CONTENTS:

EXO Front Bumper w/ Light Mount x1
2" Flush Mount LED Cubes x2
Single Row 20" LED x1
Drivers Side Frame Bracket x1
Passengers Side Frame Bracket x1
D-rings x2

TOOLS NEEDED:

12mm Socket
14mm Socket
18mm wrench or socket
19mm wrench and socket
Ratchet

KIT BAGS

82000BAG1:

10mm-1.25 x 35mm Hex Bolts x6
10mm Flat Washers x6
10MM Lock Washer x6
12mm-1.25 x 35mm Hex Bolts x2
1/2" Flat Washer x2
1/2" Lock Washer x2

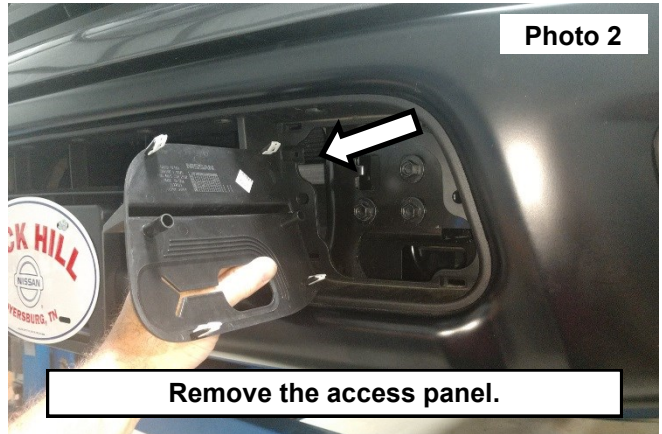
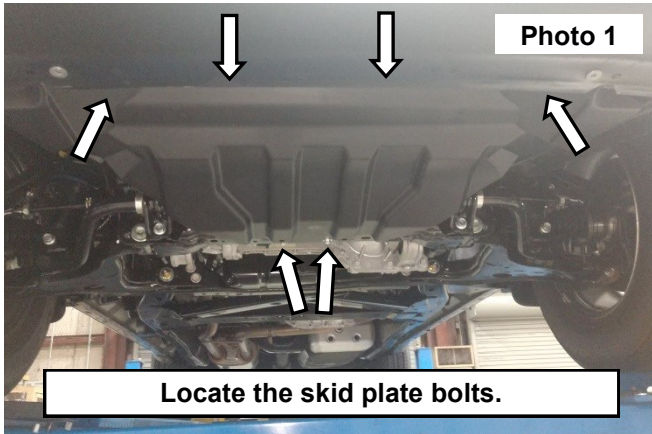
10761BAG3:

12mm-1.75 x 120mm Hex Bolts x2
1/2" Flat Washer x2
1/2" Lock Washer x2
12mm-1.75 x 35mm Hex Bolts x4
12mm Flat Washers x4
12mm Flange Lock Nuts x4

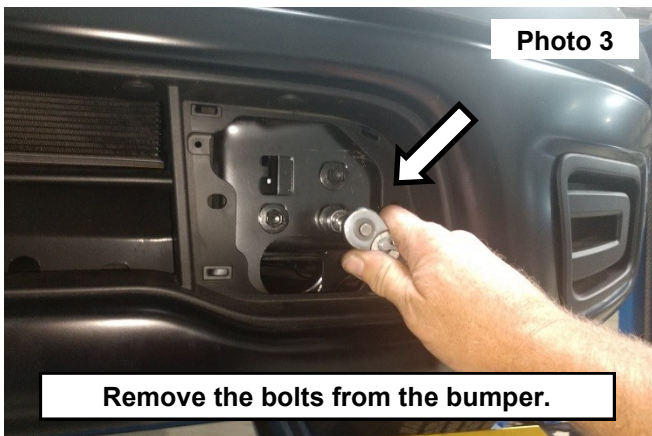


INSTALLATION INSTRUCTONS

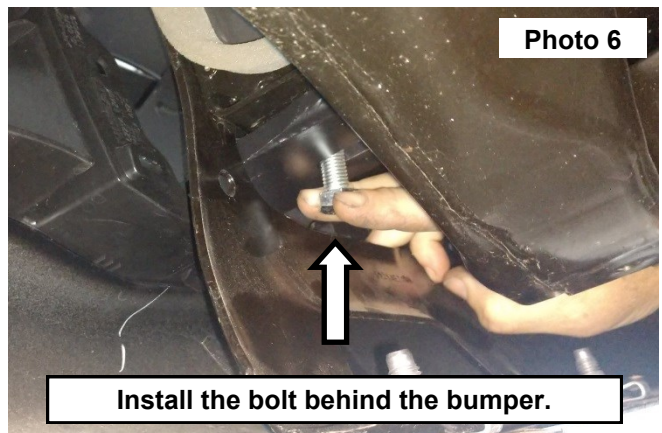
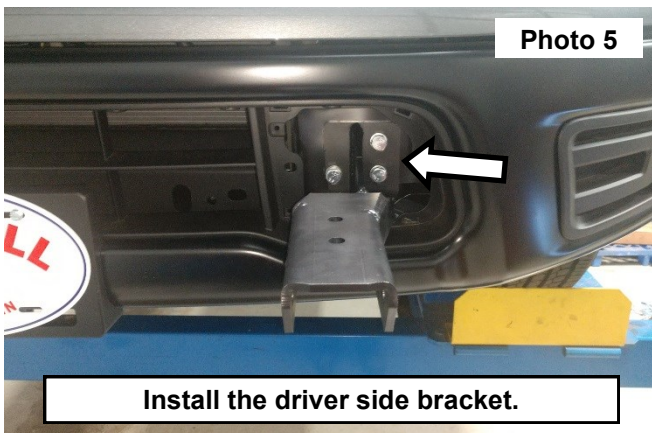
1. Locate the (6) skid plate bolts in the skid plate using a 12mm socket. **See Photo 1.**
2. Remove the front trim panel from the bumper by releasing the 4 clips. . **See Photo 2.**



3. If equipped remove the tow hooks in the front of the vehicle.
4. Preform the next step one side of the vehicle at a time.
5. Remove the 3 bolts in the front bumper using a 14mm socket (shown on the driver side). **See Photo 3.**
6. Locate the driver side bracket shown in **Photo 4.**

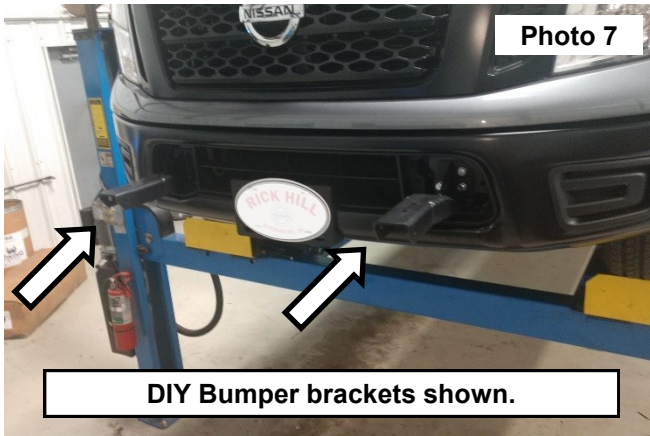


7. Install the driver side bracket. Secure the bracket to the vehicle using (3) of the supplied 10mm-1.25 x 35mm hex head bolts and (3) 10mm flat washers. Only snug the hardware hand tight using a . **See Photo 5.**
8. Secure the bottom of the bracket using (1) of the supplied 12mm-1.25 x 35mm hex head bolt and (1) 12mm Flat Washer. **See Photo 6.**
9. Repeat steps 2-8 on the opposite side of the vehicle.



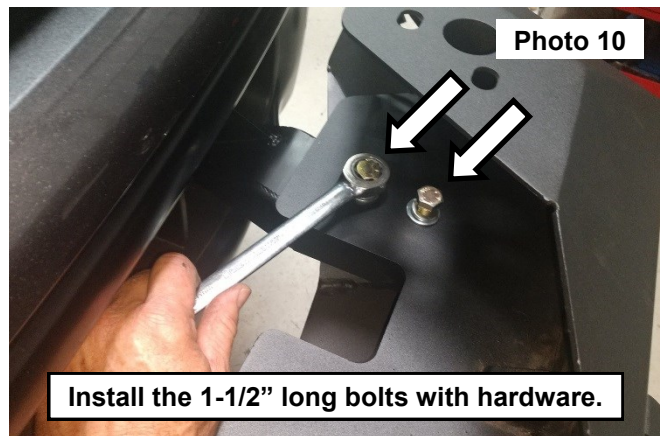
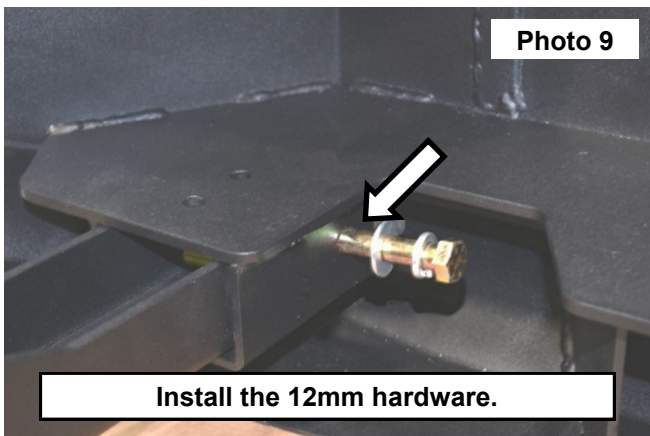
10. Driver and Passenger side brackets shown installed in **Photo 7**.

11. Install the Exo Bumper onto the brackets installed on the bumper. **See Photo 8**.

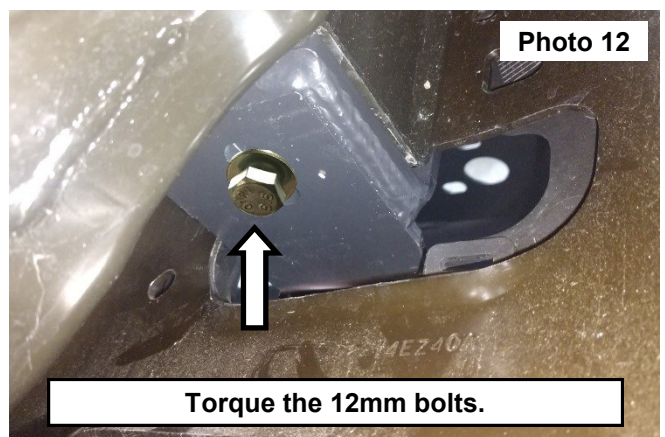
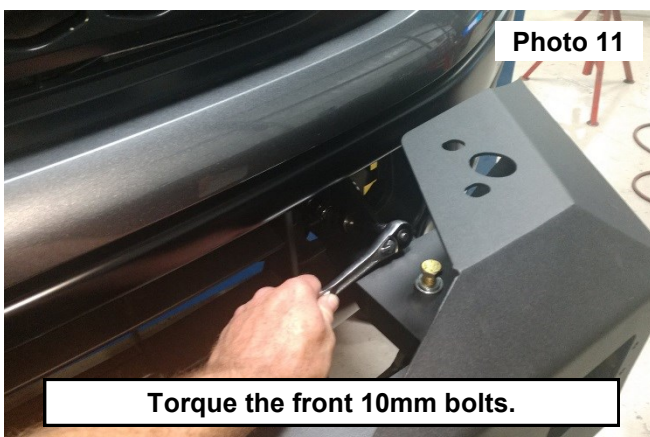


12. Align the holes in the side of the brackets and secure the EXO bumper using (1) 1/2" flat washer, (1) 1/2" lock washer and (1) 12mm-1.75 x 120mm hex head bolt into the. Do not tighten at this time. **See Photo 9**.

13. Install the (2) 1/2-13 x 1-1/2" hex head bolts, (2) 1/2" lock washers and (2) 1/2" flat washers into the top plate of the EXO bumper into the mounting brackets. **See Photo 10**. Torque the 12mm hardware to 75 ft-lbs using an 18mm wrench and socket on the frame bolts and 19mm wrench and socket on the EXO bumper bolts. Torque the 1/2" hardware to 95 ft-lbs using a 3/4" socket.

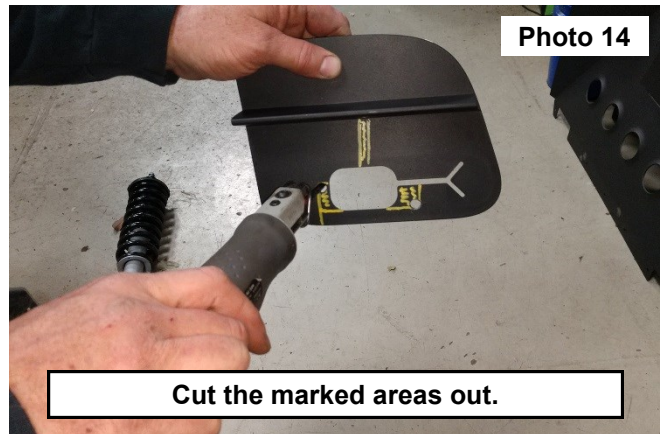
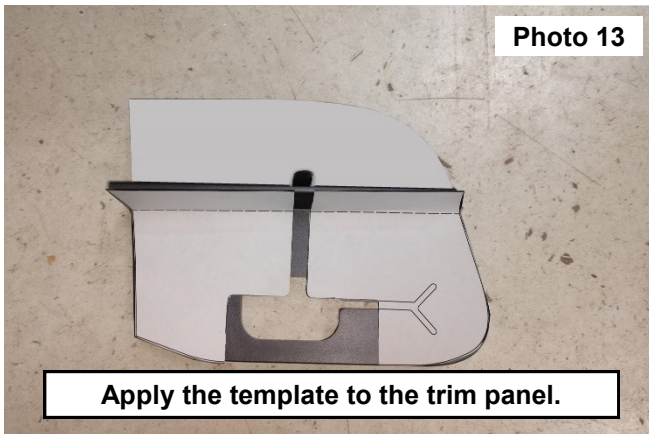


14. Torque the 10mm bumper bracket hardware to 45 ft-lbs. Then torque the 12mm bolts under the bumper bracket

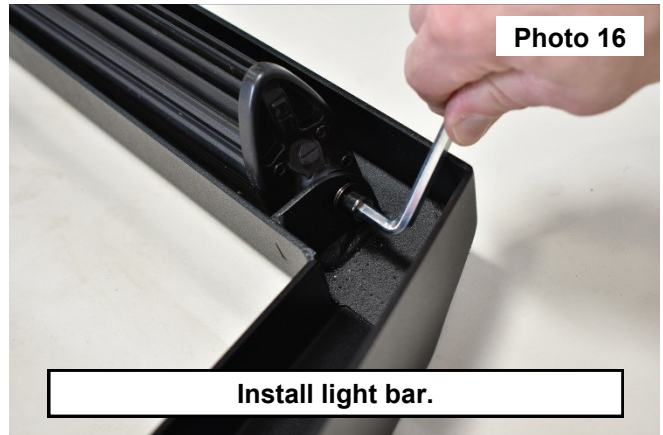
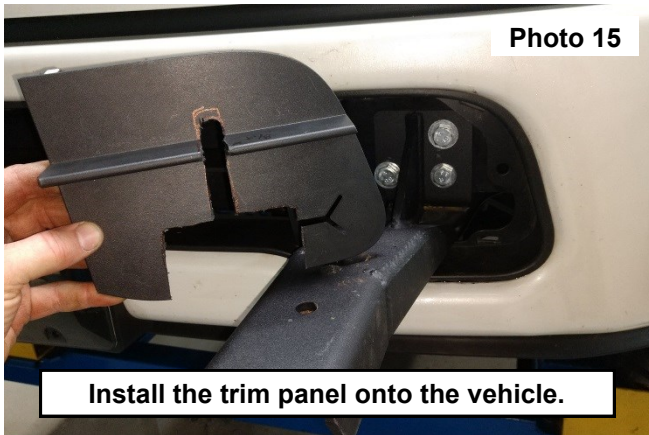


hardware to 55 ft-lbs. **See Photos 11 and 12.**

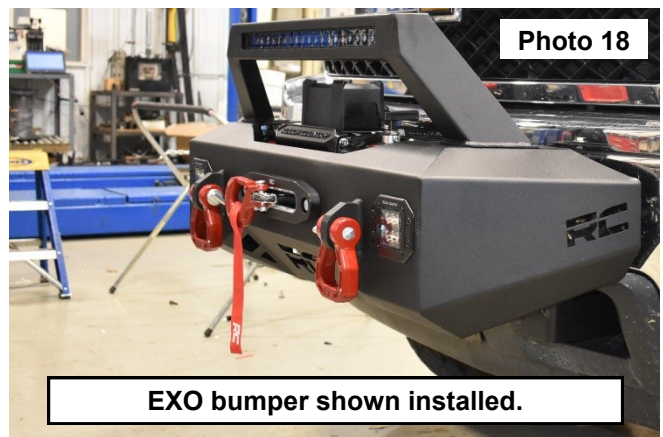
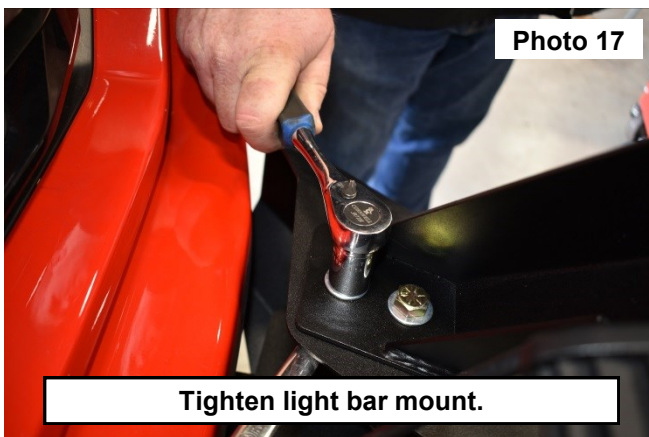
15. Align the supplied template over the front trim panel, using a paint marker transfer the inner opening onto the panel to be trimmed away. **See Photo 13.**
16. Using a reciprocating saw to cut out the marked area. Sand or file away any edges to fit onto the vehicle. **See Photo**



- 14.
17. Install the trim panel onto the original location of the front bumper. (Photo shown with out EXO bumper). **See Photo 15.**
18. Install the flush mount lights and winch per instructions included in corresponding kits.



19. Install the light bar in the mount with instructions included in light bar kit. **See Photo 16.**
20. Install the light bar mount on the bumper with the supplied 12mm x 35mm bolts, flat washers and lock nuts. **See Photo 17.** Torque to 75ft-lbs using an 18mm wrench and socket.



By purchasing any item sold by Rough Country, LLC, the buyer expressly warrants that he/she is in compliance with all applicable, State, and Local laws and regulations regarding the purchase, ownership, and use of the item. It shall be the buyers responsibility to comply with all Federal, State and Local laws governing the sales of any items listed, illustrated or sold. The buyer expressly agrees to indemnify and hold harmless Rough Country, LLC for all claims resulting directly or indirectly from the purchase, ownership, or use of the items.



Torque Specs:

Size	Grade 5	Grade 8	Size	Class 8.8	Class 10.9
5/16"	15 ft/lbs	20ft/lbs	6MM	5ft/lbs	9ft/lbs
3/8"	30 ft/lbs	35ft/lbs	8MM	18ft/lbs	23ft/lbs
7/16"	45 ft/lbs	60ft/lbs	10MM	32ft/lbs	45ft/lbs
1/2"	65 ft/lbs	90ft/lbs	12MM	55ft/lbs	75ft/lbs
9/16"	95 ft/lbs	130ft/lbs	14MM	85ft/lbs	120ft/lbs
5/8"	135ft/lbs	175ft/lbs	16MM	130ft/lbs	165ft/lbs
3/4"	185ft/lbs	280ft/lbs	18MM	170ft/lbs	240ft/lbs

