

ROUGH COUNTRY
SUSPENSION SYSTEMS®

921731020



73102BAG

27.11
(688.7 mm)

TOYOTA 2005-20 Tacoma Modular Bed Side Mounting System

Thank you for choosing Rough Country for all your vehicle needs.

Please read instructions before beginning installation. Check the kit hardware against the kit contents shown below. Be sure you have all needed parts and know where they go.

If question exist, please call us @1-800-222-7023. We will be happy to answer any questions concerning this product.

Check all fasteners for proper torque. Check to ensure for adequate clearance between all components.

Periodically check all hardware for tightness.

TOOLS NEEDED:
4mm Allen Wrench

73102:

Driver Side Bed Panel x1

73102BAG1 x1

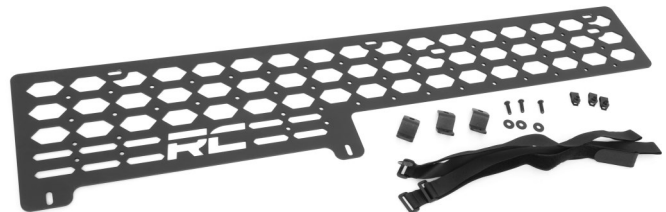
Upper Panel Top Mount Bracket x3

Velcro 1" x 18" Straps x4

6mm Button Head Bolt x3

6mm Flat Washer x3

6mm Body Clips x3



73103:

Pass Side Bed Panel x1

73102BAG1 x1

Upper Panel Top Mount Bracket x3

Velcro 1" x 18" Straps x4

6mm Button Head Bolt x3

6mm Flat Washer x3

6mm Body Clips x3



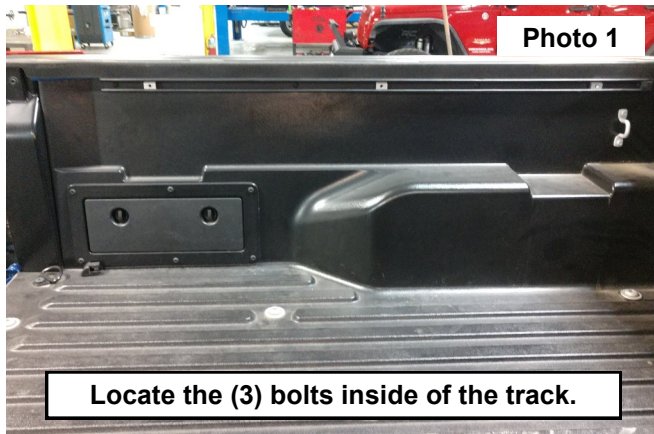
Torque Specs:

Size	Grade 5	Grade 8	Size	Class 8.8	Class 10.9
5/16"	15 ft/lbs	20ft/lbs	6MM	5ft/lbs	9ft/lbs
3/8"	30 ft/lbs	35ft/lbs	8MM	18ft/lbs	23ft/lbs
7/16"	45 ft/lbs	60ft/lbs	10MM	32ft/lbs	45ft/lbs
1/2"	65 ft/lbs	90ft/lbs	12MM	55ft/lbs	75ft/lbs
9/16"	95 ft/lbs	130ft/lbs	14MM	85ft/lbs	120ft/lbs
5/8"	135ft/lbs	175ft/lbs	16MM	130ft/lbs	165ft/lbs
3/4"	185ft/lbs	280ft/lbs	18MM	170ft/lbs	240ft/lbs

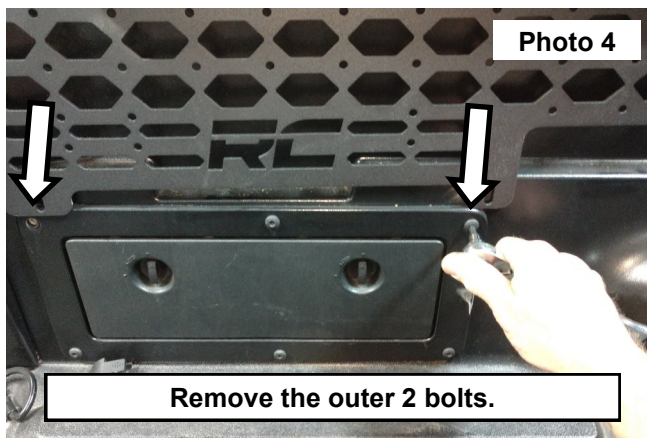
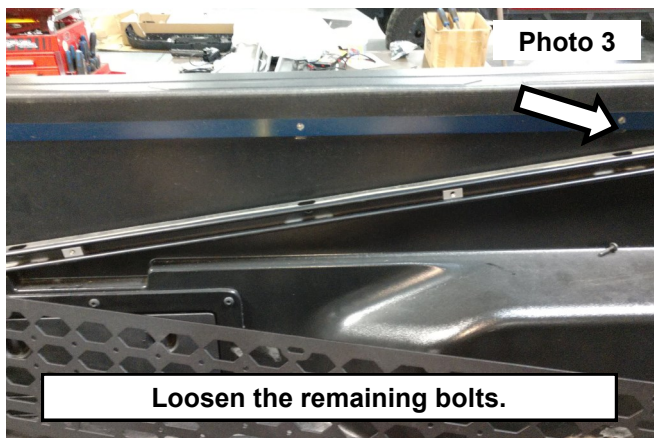


INSTALLATION INSTRUCTIONS

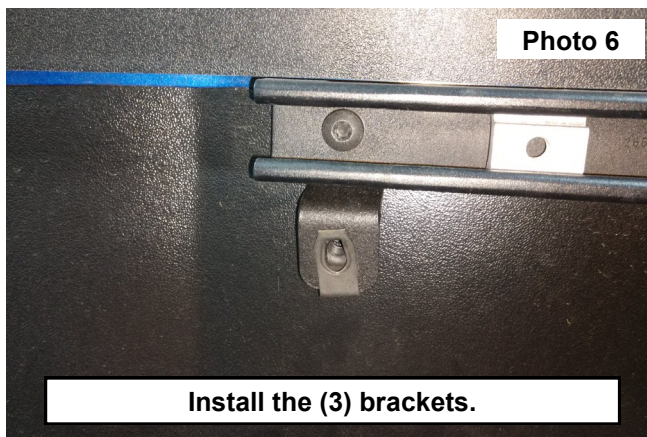
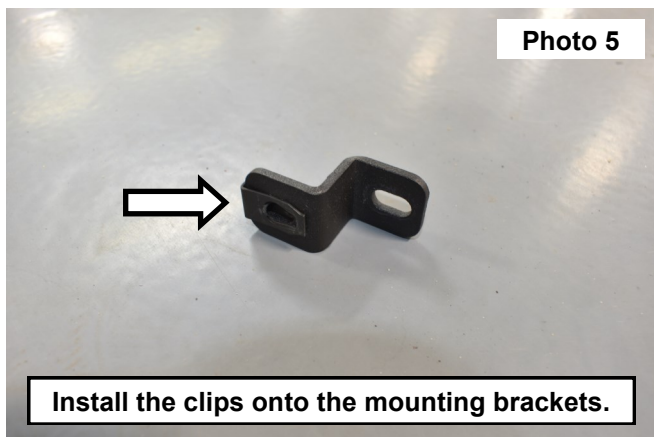
1. Locate the (3) bolts inside of the track mounted on the upper bed side. **See Photo 1.**
2. Remove the (3) bolts starting from the rear of the vehicle using a T30 Torx bit. **See Photo 2.** Retain Hardware.



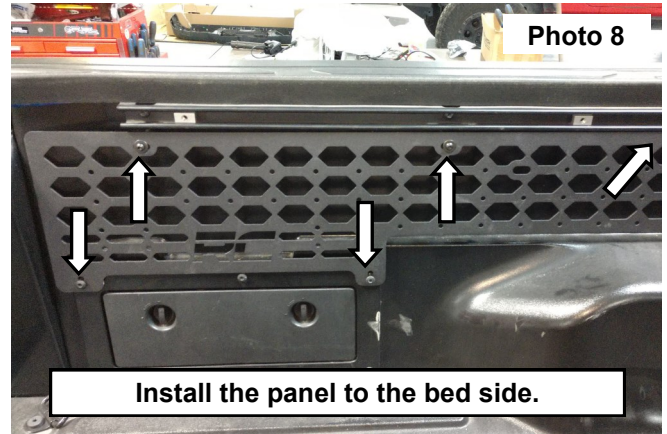
3. Loosen the 5th and 6th bolt using a T30 Torx bit in the track and lower into the bed. **See Photo 3.**
4. Remove the outer (2) bolts from the compartment door. **See Photo 4.**



5. Install the 6mm clips onto the (3) mounting brackets. **See Photo 5.**
6. Install the (3) brackets behind the rail using the OE hardware. **See Photo 6.**



7. Tighten the (5) bolts in the rail using a T30 Torx bit. **See Photo 7.**
8. Place the modular bed mounting system onto the inner bed side mounting brackets. Secure using (3) of the supplied 6mm Button Head bolts and (3) 6mm flat washers. In the top mounting brackets. Tighten using a 4mm allen wrench. **See Photo 8.**
9. Secure the lower mount to the inner bed using the retained hardware. Tighten using a T30 Torx bit.



10. Repeat steps 1-9 on the opposite side of the vehicle.



By purchasing any item sold by Rough Country, LLC, the buyer expressly warrants that he/she is in compliance with all applicable, State, and Local laws and regulations regarding the purchase, ownership, and use of the item. It shall be the buyers responsibility to comply with all Federal, State and Local laws governing the sales of any items listed, illustrated or sold. The buyer expressly agrees to indemnify and hold harmless Rough Country, LLC for all claims resulting directly or indirectly from the purchase, ownership, or use of the items.

