

# ROUGH COUNTRY

## SUSPENSION SYSTEMS®

### 97-01 Jeep XJ MLC-6 Kit

Thank you for choosing Rough Country for all your lighting needs.

#### ▲ NOTICE

Please read instructions before beginning installation. Check the kit hardware against the kit contents shown below. Be sure you have all needed parts and know where they go. If question exist, please call us @1-800-222-7023. We will be happy to answer any questions concerning the design, function, and correct use of our products.

#### Tools Needed:

8mm Socket  
3mm Allen wrench  
15mm Socket  
11mm Socket  
Ratchet  
Drill  
1/4" Drill bit  
Phillips Screwdriver

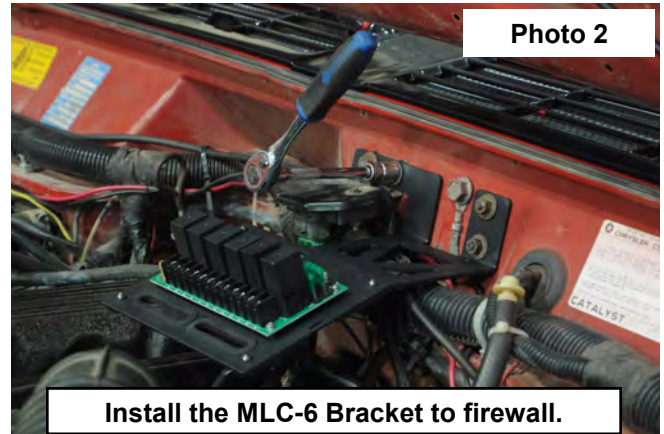
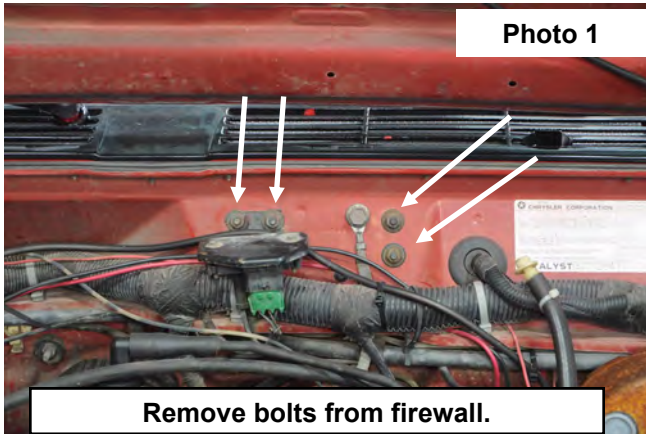
#### Kit Contents

(1) Fuse pod w/ mounting bracket  
(1) Switch Bezel w/ Wiring Harness  
(4) Allen Head Bolts  
(4) Locking Nuts  
(1) Relay Pod w/ Power & Ground Wires  
Electrical Connectors  
Zip Ties  
Heat Shrink Tubing

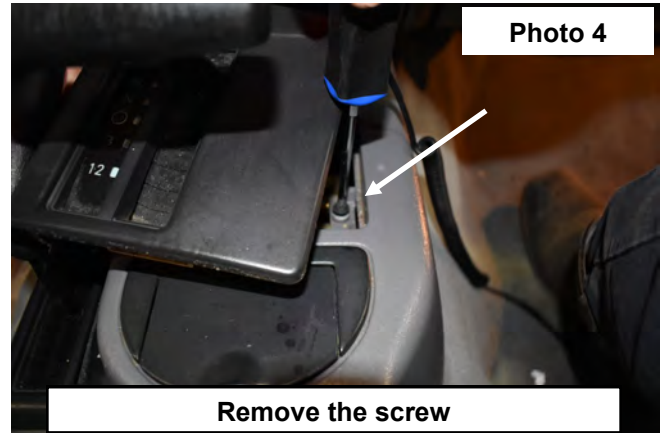
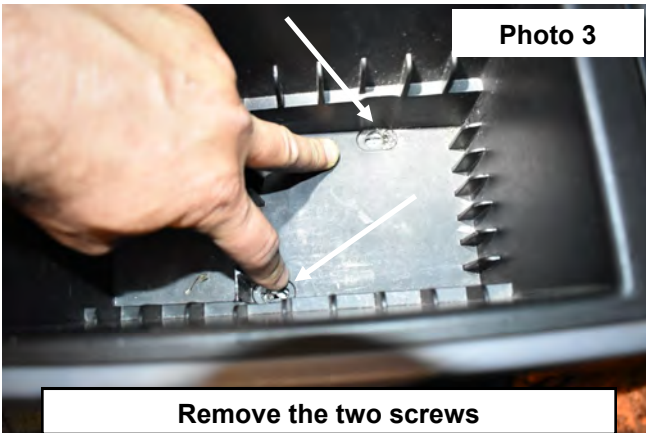


## INSTALLATION INSTRUCTIONS

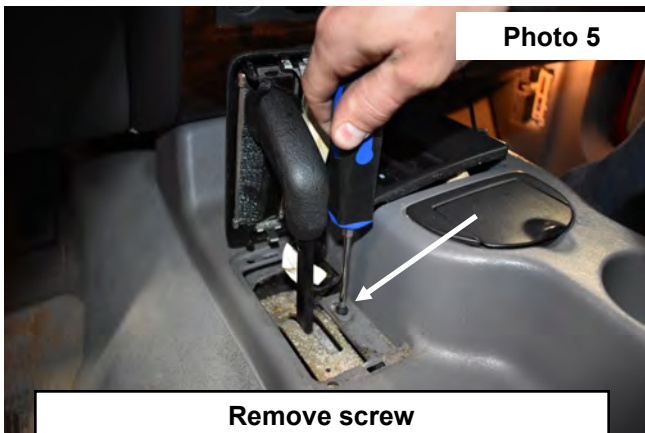
1. Park the vehicle on a smooth level surface.
2. Assemble the fuse panel on the mounting bracket with the fuse panel hardware if not already.
3. Remove the 4 bolts shown in **Photo 1** using a 11mm wrench.
4. Secure the mounting bracket to the firewall with the stock hardware. Tighten using a 11mm wrench. **See Photo 2.**



5. On the inside of the vehicle, remove the two screws inside the center console. **See Photo 3.**
6. Pop up the shifter cover and remove the screw as shown in **Photo 4.**



7. Pop up the 4WD shifter plastic trim and remove the screw as shown in **Photo 5.**
8. Remove the ash tray. **See Photo 6.**

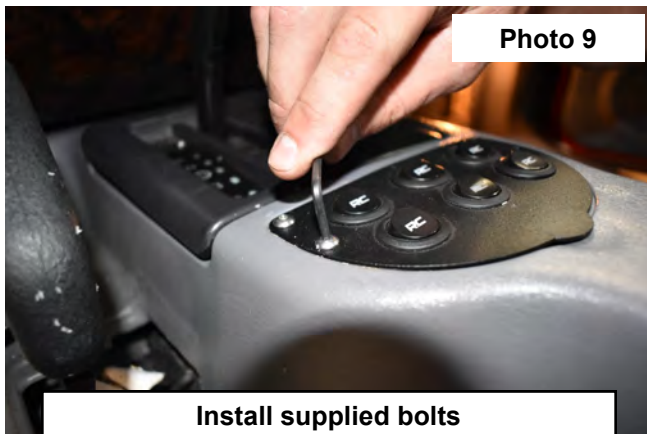




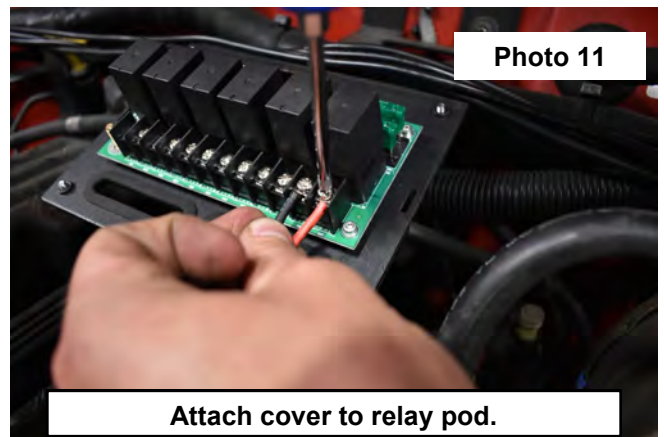
- Place the switch bezel in the location the ash try was removed from. **See Photo 7.** Take care to keep the wires away from harm as the switch bezel is installed. The wiring harness will be routed under the console and toward the engine compartment to be connected with the MLC-6 fuse panel.
- Using the bracket as a guide, drill the mounting holes using a 1/4" drill bit. **See Photo 8.** Take care not to damage wires under the switch panel.



- Install the supplied allen head bolts and lock nuts. **See Photo 9.** Tighten using a 3mm Allen wrench and 8mm socket.
- Reinstall the console with the stock hardware.
- Route the harness through the firewall and plug in the fuse panel and switch bank bezel.



- Wire lights and other 12V accessories to the fuse panel. **See Photo 11.**



**▲ NOTICE** AFTER INSTALLATION, YOU MUST START THE ENGINE TO ACTIVATE THE SYSTEM! **▲ NOTICE**

By purchasing any item sold by Rough Country, LLC, the buyer expressly warrants that he/she is in compliance with all applicable , State, and Local laws and regulations regarding the purchase, ownership, and use of the item. It shall be the buyers responsibility to comply with all Federal, State and Local laws governing the sales of any items listed, illustrated or sold. The buyer expressly agrees to indemnify and hold harmless Rough Country, LLC for all claims resulting directly or indirectly from the purchase, ownership, or use of the items.

