

**ROUGH COUNTRY**  
SUSPENSION SYSTEMS®

921520020



**52002BAG**

27.11  
[688.7 mm]

## FORD 2021 Bronco Aluminum Rails

Thank you for choosing Rough Country for all your vehicle needs.

Please read instructions before beginning installation. Check the kit hardware against the kit contents shown below. Be sure you have all needed parts and know where they go.

If question exist, please call us @1-800-222-7023. We will be happy to answer any questions concerning this product.

Check all fasteners for proper torque. Check to ensure for adequate clearance between all components.

Periodically check all hardware for tightness.

### KIT CONTENTS:

Side Rail x2  
Front End Caps x2  
Rear End Caps x2  
Front (F) Brackets x2  
Middle/Rear Brackets x4

### TOOLS NEEDED:

13mm Wrench or Socket  
17mm Wrench or Socket

### HARDWARE INCLUDED:

8mm x 10mm Button Head Bolts x12  
8mm Nuts x12  
8mm x 25mm Bolts x24  
8mm Lock Nuts x24  
8mm Oversized Flat Washers x12  
10mm x 25mm Bolts x6  
10mm Flat Washers x6  
10mm Lock Washers x6



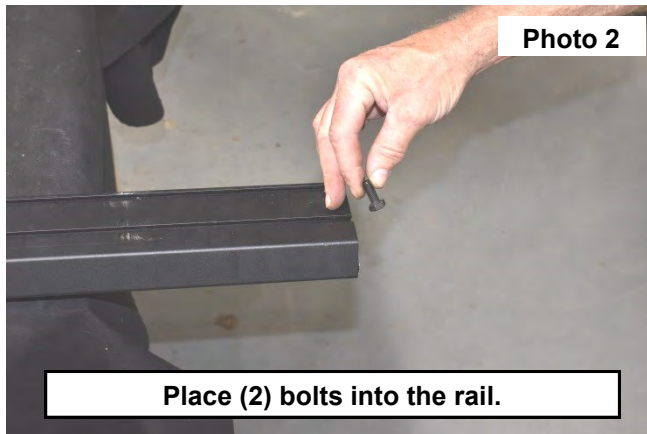
### Torque Specs:

Size	Grade 5	Grade 8	Size	Class 8.8	Class 10.9
5/16"	15 ft/lbs	20ft/lbs	6MM	5ft/lbs	9ft/lbs
3/8"	30 ft/lbs	35ft/lbs	8MM	18ft/lbs	23ft/lbs
7/16"	45 ft/lbs	60ft/lbs	10MM	32ft/lbs	45ft/lbs
1/2"	65 ft/lbs	90ft/lbs	12MM	55ft/lbs	75ft/lbs
9/16"	95 ft/lbs	130ft/lbs	14MM	85ft/lbs	120ft/lbs
5/8"	135ft/lbs	175ft/lbs	16MM	130ft/lbs	165ft/lbs
3/4"	185ft/lbs	280ft/lbs	18MM	170ft/lbs	240ft/lbs

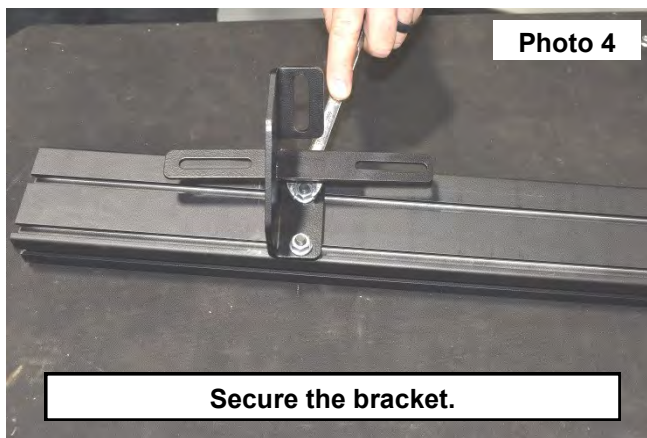
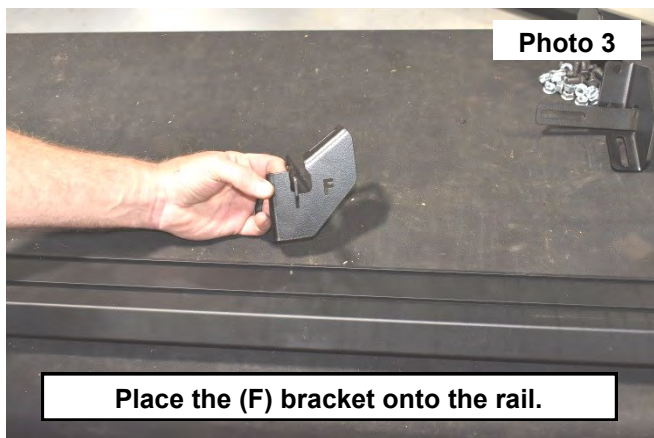


## INSTALLATION INSTRUCTIONS

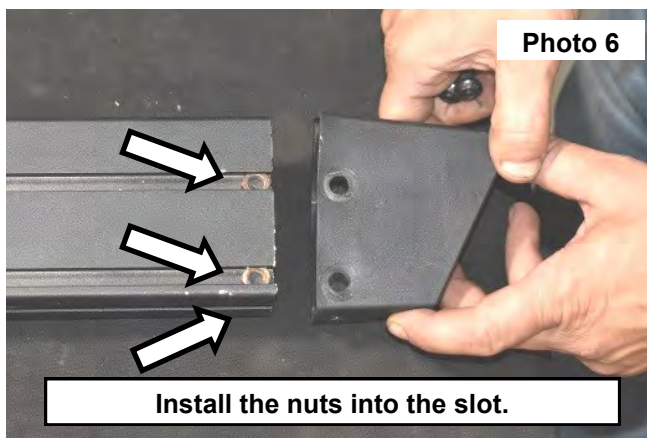
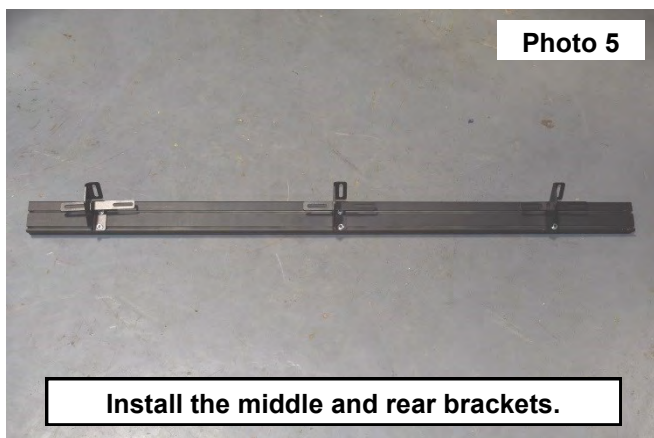
1. Locate all hardware and (1) of the front brackets labeled (F) and (2) brackets with no markings will be the middle and the rear bracket. **See Photo 1.**
2. Place (2) of the 8mm-1.25 x 50mm hex head bolts onto the back side of the rail. **See Photo 2.**



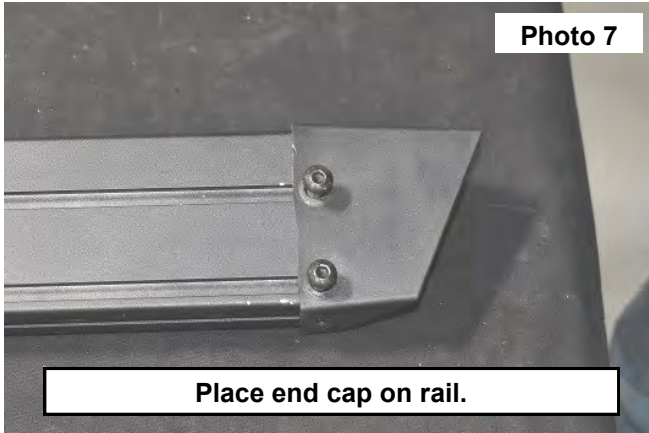
3. Locate the step bracket labeled (F) and place onto the (2) bolts on the front end of the step. Secure using (2) 8mm flange lock nuts. Snug the hardware using a 13mm wrench. The bracket will be slid into place during installation on the vehicle. **See Photos 3 and 4.**



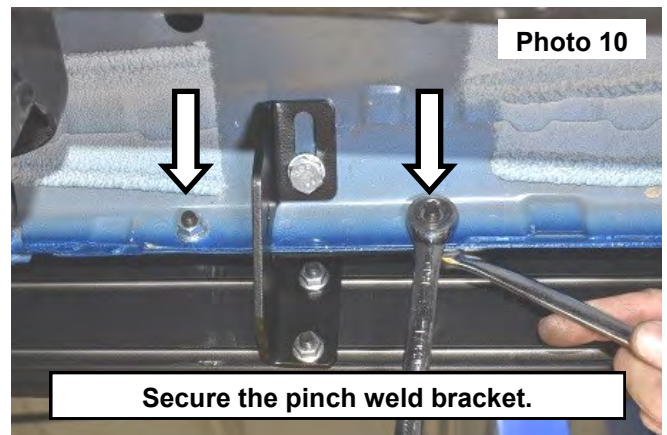
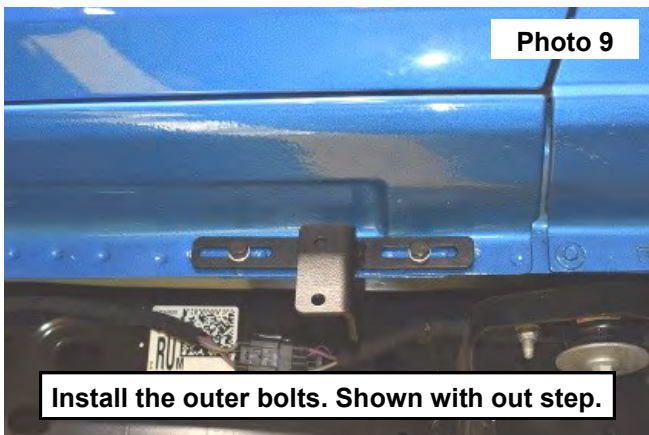
4. Repeat steps 1-3 when installing the middle and rear brackets onto the rail using the 8mm hardware. **See Photo 5.**
5. Place (3) 8mm nuts into the slot in the edge of the rail. **See Photo 6.**



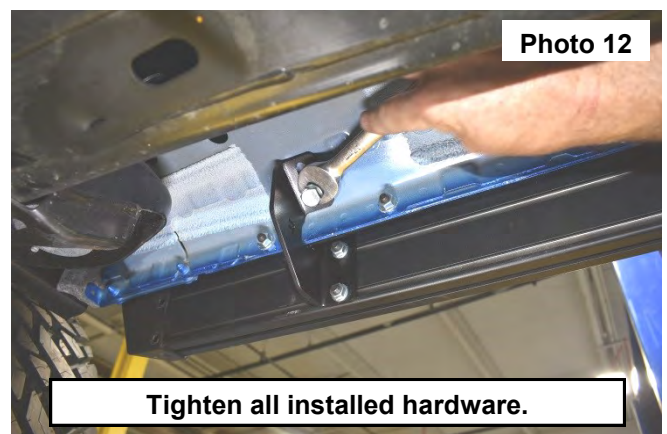
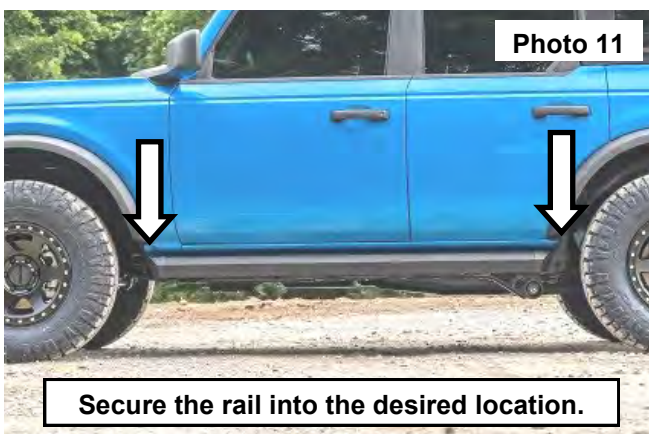
6. Place the end cap onto the rail and secure using (3) of the supplied 8mm x 10mm button head allen bolts. Tighten using a 5m allen wrench. Do not over tighten. **See Photo 7.**
7. Repeat steps 5 and 6 for the rear rail end cap.
8. Place the rail onto the vehicle with the (F) bracket to the front of the vehicle. Secure the center slotted mount to the threaded insert in the body using (1) of the supplied 10mm x 25mm hex head bolt, (1) 10mm flat washer and (1) 10mm lock washer. **See Photo 8.**
9. Secure the front and rear slotted mounts to the body using (1) of the supplied 10mm x 25mm hex head bolt, (1) 10mm flat washer and (1) 10mm lock washer.



10. Secure the rail to the pinch weld using (2) of the supplied 8mm x 50mm bolts (2) 8mm flat washers and (2) 8mm flange lock nuts. **See Photos 9 and 10.**



11. Secure the rail into the desired location. **See Photo 11.**
12. Tighten all installed hardware. 8mm 13mm socket and wrench and 10mm 17mm socket. **See Photo 12.**





By purchasing any item sold by Rough Country, LLC, the buyer expressly warrants that he/she is in compliance with all applicable, State, and Local laws and regulations regarding the purchase, ownership, and use of the item. It shall be the buyers responsibility to comply with all Federal, State and Local laws governing the sales of any items listed, illustrated or sold. The buyer expressly agrees to indemnify and hold harmless Rough Country, LLC for all claims resulting directly or indirectly from the purchase, ownership, or use of the items.

