



FORD 2021-Up Bronco Sport 1.5” Loaded Strut Instructions

Thank you for choosing Rough Country for all your vehicle needs.

Rough Country recommends a certified technician install this system. In addition to these instructions, professional knowledge of disassemble/reassembly procedures as well as post installation checks must be known. Attempts to install this system without this knowledge and expertise may jeopardize the integrity and/or operating safety of the vehicle.

Please read instructions before beginning installation. Check the kit hardware against the parts list. Be sure you have all needed parts and know where they go. Also please review tools needed list and make sure you have needed tools. If question exist, please call us @1-800-222-7023. We will be happy to answer any questions concerning this product. Check all fasteners for proper torque. Check to ensure for adequate clearance between all components. Periodically check all hardware for tightness.

PRODUCT USE INFORMATION

⚠ WARNING The taller a vehicle is, the easier it will roll. We strongly recommend, because of rollover possibility that seat belts and shoulder harnesses should be worn at all times. Avoid situations where a side rollover may occur.

⚠ WARNING Braking performance and capability are decreased when larger/heavier tires and wheels are used. Take this into consideration while driving. Do not add, alter, or fabricate any factory or after-market parts to increase vehicle height over the intended height of the Rough Country product purchased. Mixing component brands is not recommended.

Rough Country makes no claims regarding lifting devices and excludes any and all implied claims. We will not be responsible for any product that is altered. If questions exist we will be happy to answer them concerning the design, function, and correct use of our products.

⚠ NOTICE

DEALER AND VEHICLE OWNER

Any vehicle equipped with any Rough Country product should have a “Warning to Driver” decal installed on the inside of the windshield or on the vehicle’s dash. The decal should act as a constant reminder for whoever is operating the vehicle of its unique handling characteristics.

Torque Specs:

Size	Grade 5	Grade 8	Size	Class 8.8	Class 10.9
5/16”	15 ft/lbs	20ft/lbs	6MM	5ft/lbs	9ft/lbs
3/8”	30 ft/lbs	35ft/lbs	8MM	18ft/lbs	23ft/lbs
7/16”	45 ft/lbs	60ft/lbs	10MM	32ft/lbs	45ft/lbs
1/2”	65 ft/lbs	90ft/lbs	12MM	55ft/lbs	75ft/lbs
9/16”	95 ft/lbs	130ft/lbs	14MM	85ft/lbs	120ft/lbs
5/8”	135ft/lbs	175ft/lbs	16MM	130ft/lbs	165ft/lbs
3/4”	185ft/lbs	280ft/lbs	18MM	170ft/lbs	240ft/lbs



Kit Contents:

1.5" Lift Struts x2

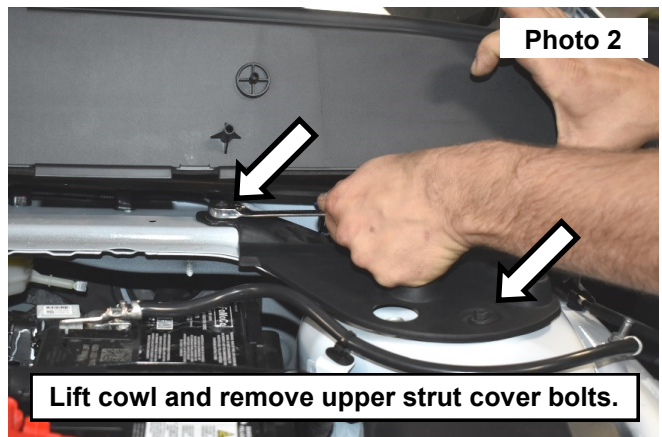
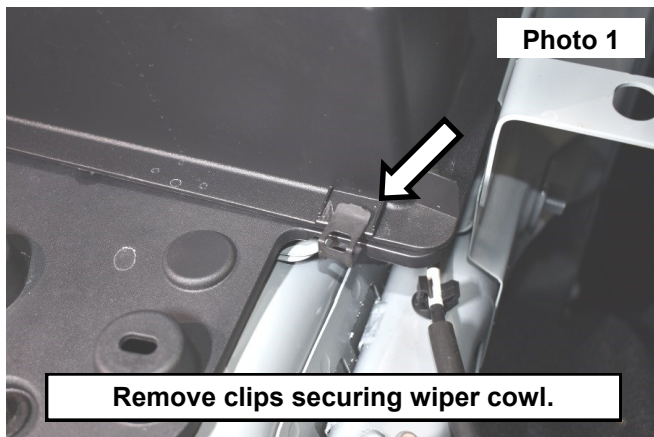
Tools Needed:

8MM Socket/Wrench
10MM Socket/Wrench
13MM Socket/Wrench
15MM Socket/Wrench
18MM Socket/Wrench
19MM Socket/Wrench
21MM Socket/Wrench

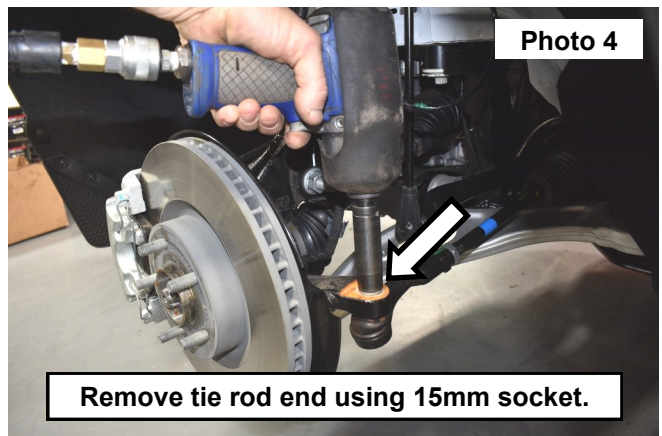


FRONT INSTALLATION INSTRUCTONS

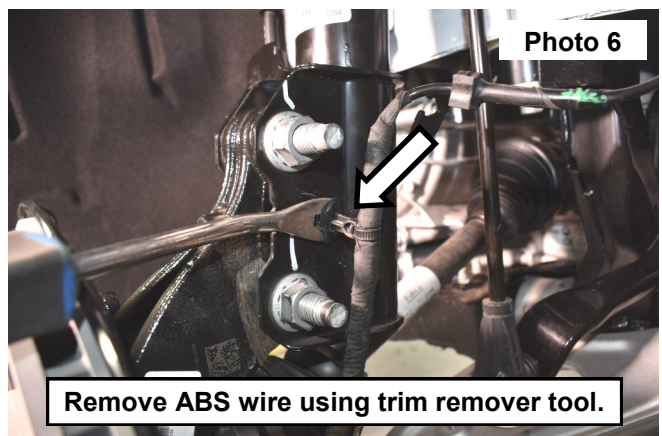
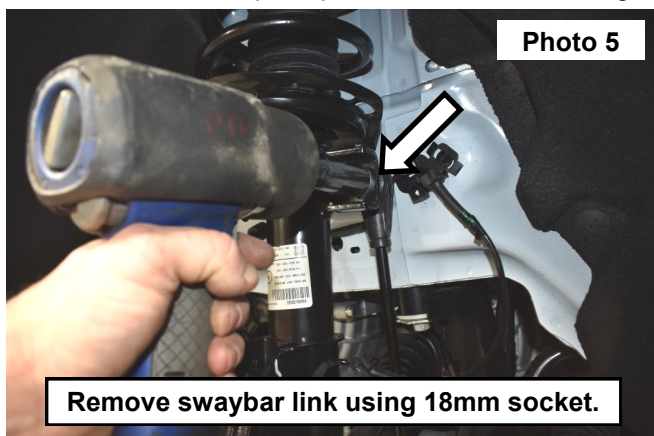
1. Lift the hood and remove the clips securing the wiper cowl. **See Photo 1.**
2. Lift up the cowl and remove the bolts for the upper strut cover using a 10mm wrench. **See Photo 2.**



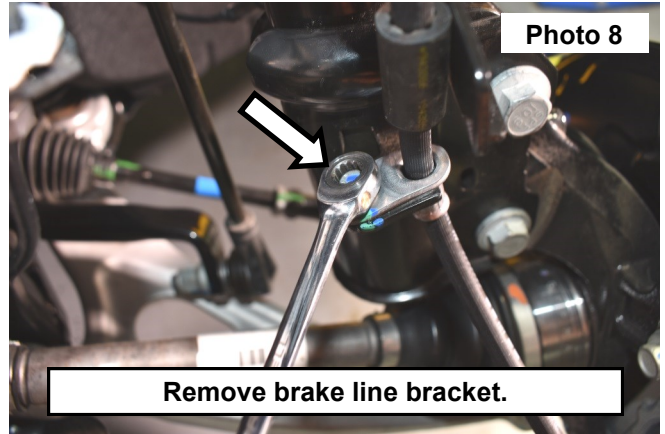
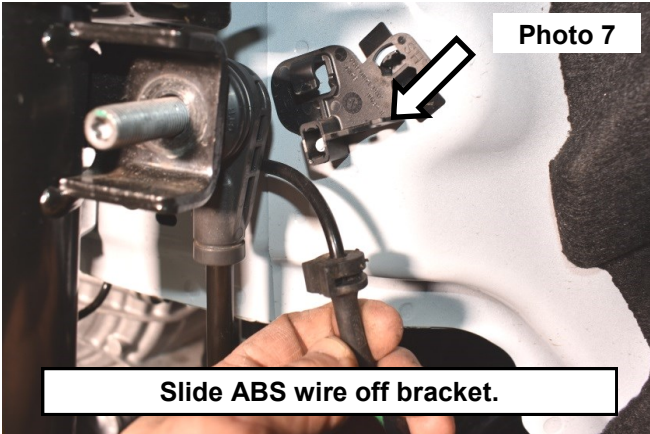
3. Remove upper strut cover. **See Photo 3.**
4. Jack up the vehicle and set on jack stands. Remove the wheels.
5. Remove the tie rod end using a 15mm socket/wrench. **See Photo 4.**



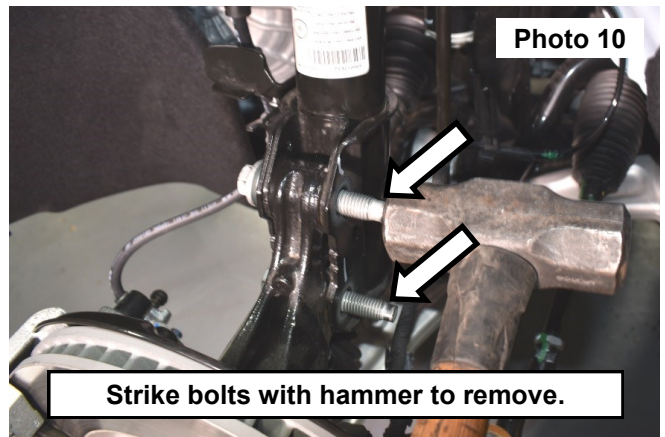
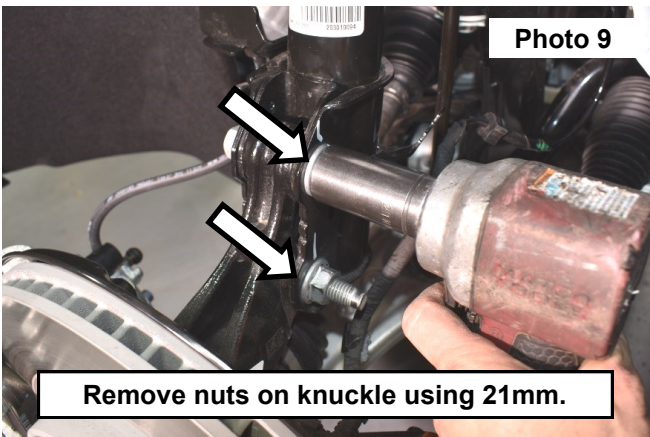
6. Remove the swaybar link using a 18mm socket/wrench. **See Photo 5.**
7. Remove ABS wire push pin from the knuckle using a trim remover tool. **See Photo 6.**



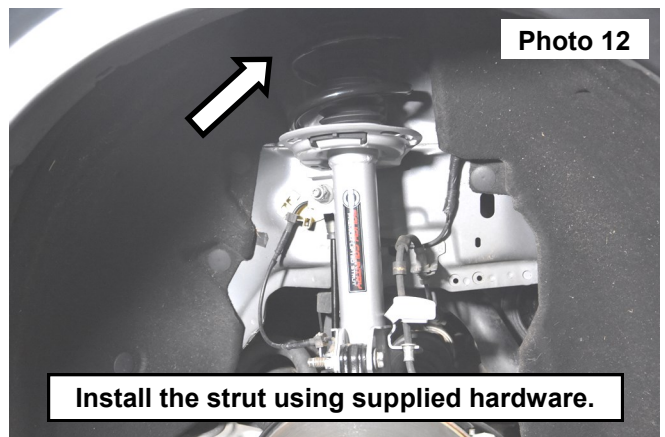
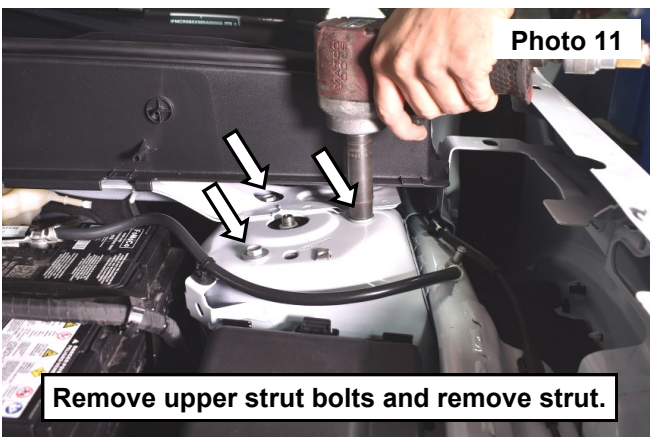
8. Slide the ABS wire off the bracket from the frame. **See Photo 7.**
9. Remove the brake line bracket using a 8mm wrench. **See Photo 8.**



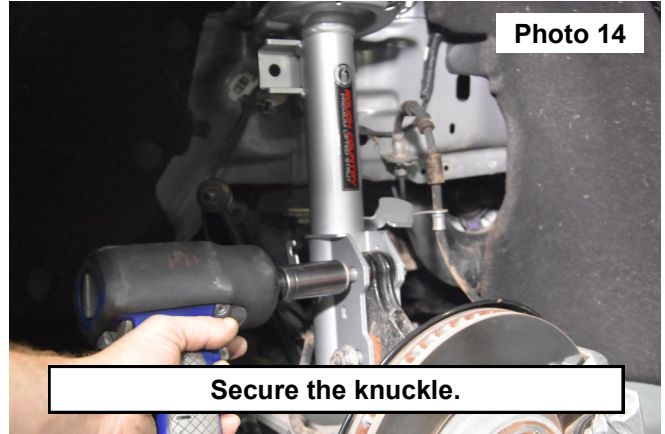
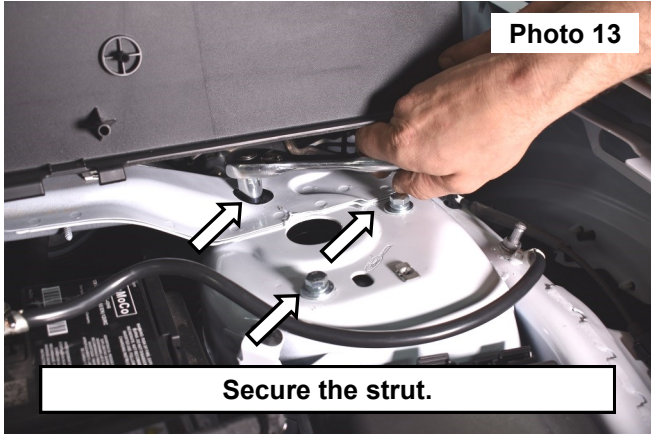
10. Remove the nuts on the knuckle using a 21mm socket/wrench. **See Photo 9.**
11. Strike bolts with a hammer to remove. **See Photo 10.**



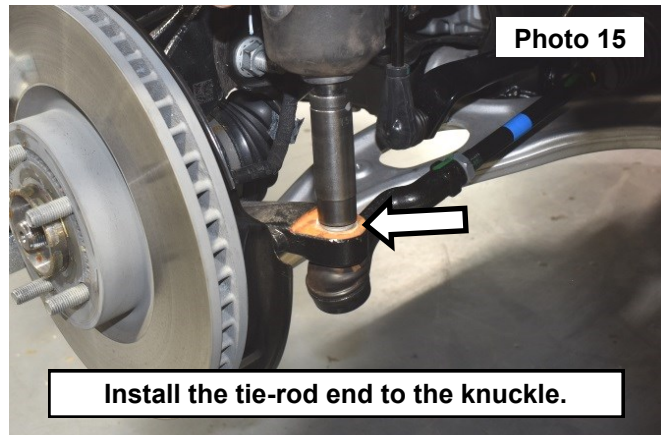
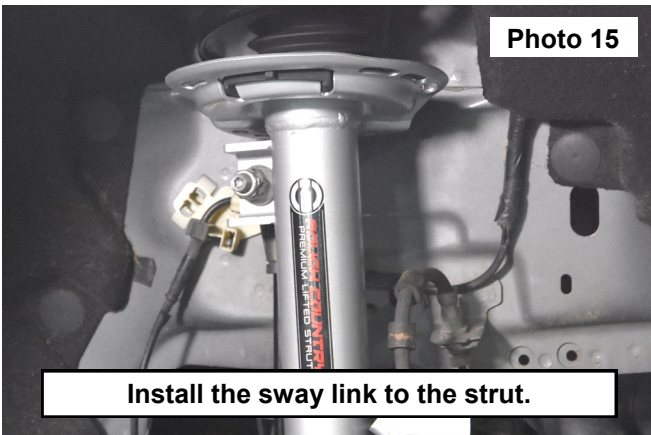
12. Remove upper strut bolts using a 13mm socket and remove from vehicle. **See Photo 11.**
13. Install the Front Strut using the supplied hardware. **See Photo 12.**



14. Secure the strut using the supplied hardware and tighten using a 13mm socket **See Photo 13.**
15. Secure the knuckle into the lower strut mount using the OE hardware. Tighten using a 21mm socket and wrench to seat the bolt into the strut. **See Photo 14.**



16. Install the sway link into the strut mount using the OE nut. **See Photo 15.**
17. Reinstall tie-rod end using a 15mm socket/wrench. **See Photo 16.**



18. Reinstall brake line bracket.
19. Reinstall ABS push pin.
20. Reinstall the upper strut cover and cowl.