

ROUGH COUNTRY

SUSPENSION SYSTEMS®

Subaru 2015-19 Outback Front 2" Strut

Thank you for choosing Rough Country for all your vehicle needs.

Please read instructions before beginning installation. Check the kit hardware against the kit contents shown below. Be sure you have all needed parts and know where they go.

If question exist, please call us @1-800-222-7023. We will be happy to answer any questions concerning this product.

Check all fasteners for proper torque. Check to ensure for adequate clearance between all components.

Periodically check all hardware for tightness.

KIT CONTENTS:

2" Lift Strut x2

HARDWARE INCLUDED:

10mm Nuts x6

TOOLS NEEDED:

Plyers

Jack Stands

Floor Jack

12mm Wrench or Socket

13mm Wrench or Socket

19mm Wrench and Socket



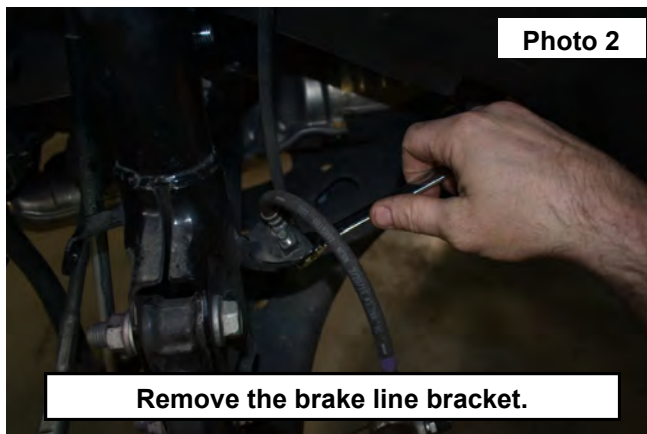
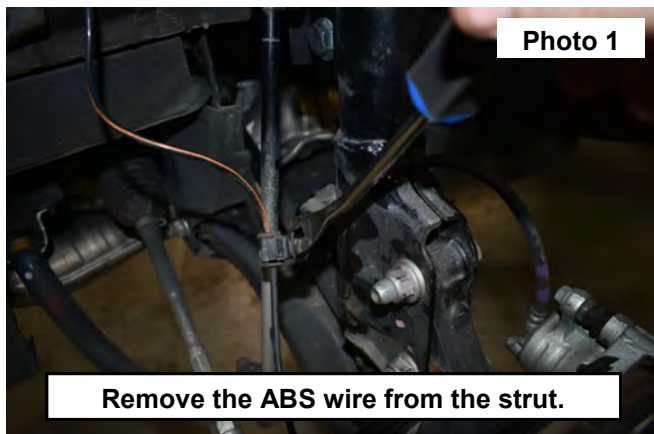
Torque Specs:

Size	Grade 5	Grade 8	Size	Class 8.8	Class 10.9
5/16"	15 ft/lbs	20ft/lbs	6MM	5ft/lbs	9ft/lbs
3/8"	30 ft/lbs	35ft/lbs	8MM	18ft/lbs	23ft/lbs
7/16"	45 ft/lbs	60ft/lbs	10MM	32ft/lbs	45ft/lbs
1/2"	65 ft/lbs	90ft/lbs	12MM	55ft/lbs	75ft/lbs
9/16"	95 ft/lbs	130ft/lbs	14MM	85ft/lbs	120ft/lbs
5/8"	135ft/lbs	175ft/lbs	16MM	130ft/lbs	165ft/lbs
3/4"	185ft/lbs	280ft/lbs	18MM	170ft/lbs	240ft/lbs

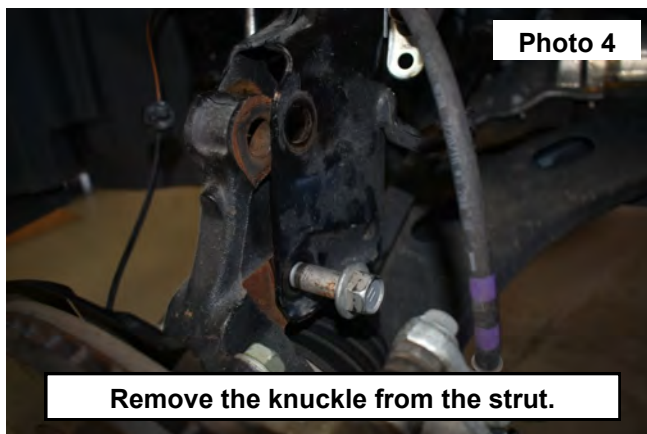
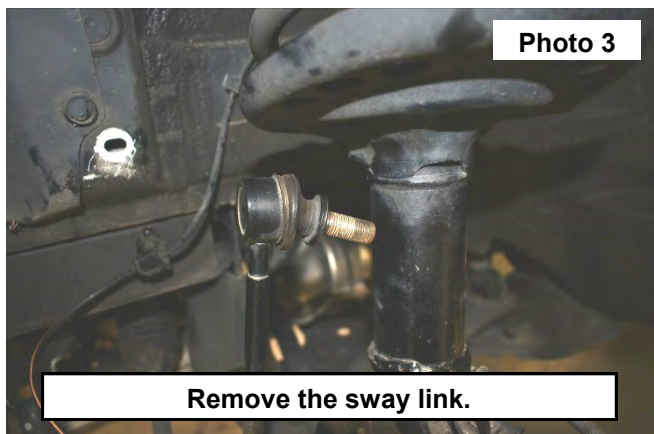


INSTALLATION INSTRUCTIONS

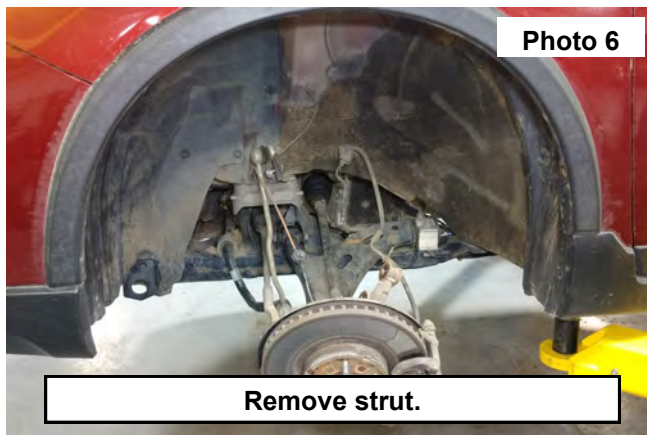
1. Raise the front of the vehicle up using a jack. Then lower onto jack stands placed under the frame.
2. Remove the wheels and tires.
3. Use pliers to remove the ABS sensor wire from the strut bracket. **See Photo 1.**
4. Use a 12mm socket to remove the bolt from the struts brake line bracket. **See Photo 2.** Retain the bolt.



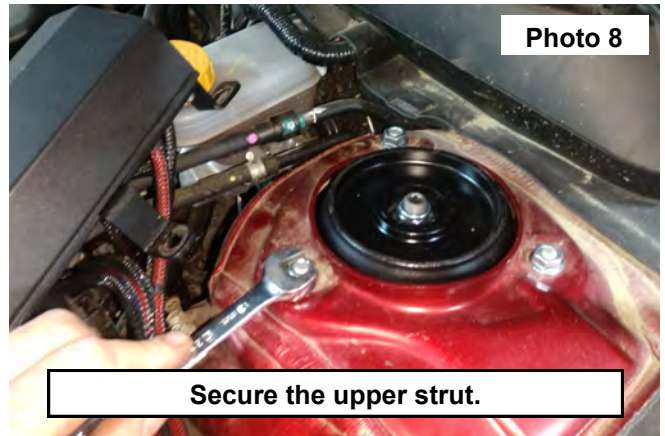
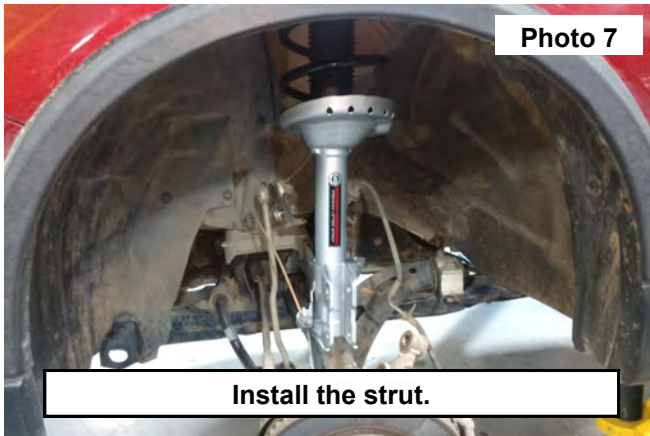
5. Remove the sway bar link from the strut using a 17mm wrench. See Photo 3.
6. Support the lower control arm using a jack. Then remove the (2) bolts from the lower strut. **See Photo 4.** retain hardware.
7. Lower the jack and remove the knuckle from the strut.



8. Support the strut. Remove the (3) nuts from the top mount and remove the strut. Using a 12mm socket. **See Photos 5 and 6.**

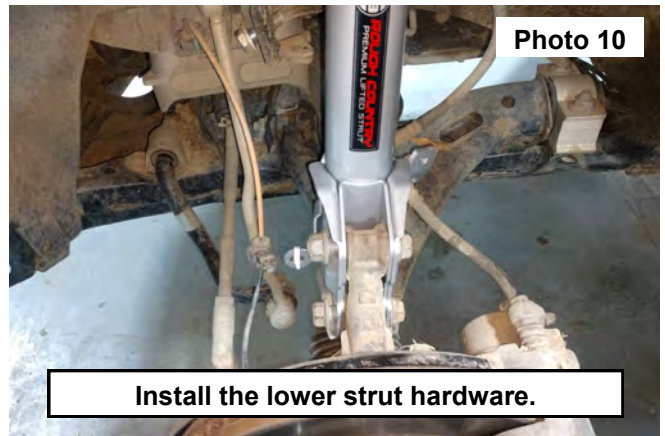


9. Install the strut into the upper strut mount using (3) of the supplied 10mm nuts. **See Photos 7 and 8.**



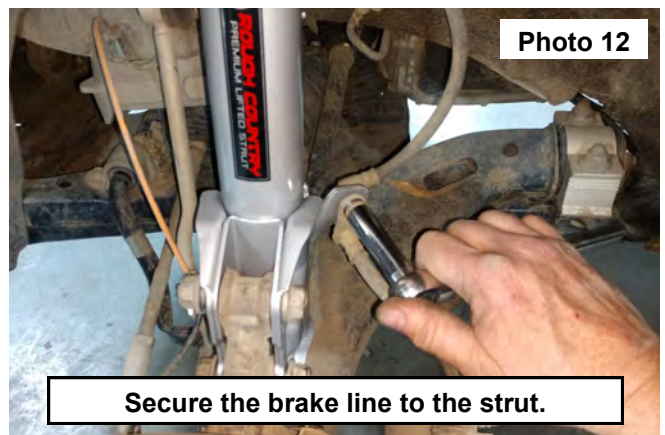
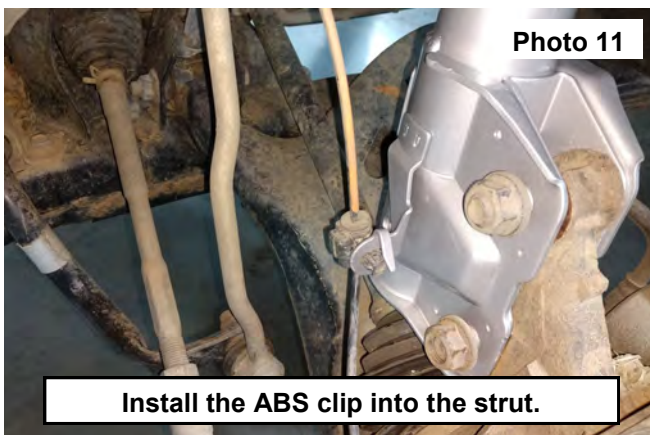
10. Install the sway link into the strut brackets using the OE nut. Tighten using a 17mm socket. **See Photo 9.**

11. Place the knuckle into the lower strut. Then install the upper cam bolt and the lower bolt into the strut. Position the cam bolt into the center position and tighten the (2) bolts using a 19mm wrench and socket. **See Photo 10.**



12. Press the ABS line clip into the strut mount. **See Photo 11.**

13. Secure the brake line to the strut mount using the OE bolt, tighten using a 12mm socket. **See Photo 12.**



14. Install the strut into the opposite side of the vehicle.

15. Install the wheels and tires.

16. Lift the front of the vehicle using a jack, remove the jack stands and then lower onto the ground.

17. This vehicle will need to have an alignment performed after the installation of this kit.



By purchasing any item sold by Rough Country, LLC, the buyer expressly warrants that he/she is in compliance with all applicable, State, and Local laws and regulations regarding the purchase, ownership, and use of the item. It shall be the buyers responsibility to comply with all Federal, State and Local laws governing the sales of any items listed, illustrated or sold. The buyer expressly agrees to indemnify and hold harmless Rough Country, LLC for all claims resulting directly or indirectly from the purchase, ownership, or use of the items.

