



07-20 Tundra Skid Plate

Thank you for choosing Rough Country for all of your suspension needs.

Rough Country recommends that a certified technician install this system. In addition to these instructions, professional knowledge of disassemble/reassembly procedures as well as post installation checks must be known. Attempts to install this system without this knowledge and expertise may jeopardize the integrity and/or operating safety of the vehicle. Please read all the instructions before beginning the installation. Check the kit hardware against the “Kit Contents” list below. If question exist, please call us @1-800-222-7023. We will be happy to answer any questions concerning this product. Check all fasteners for proper torque. Check to ensure for adequate clearance between all components. Check and retighten wheels at 50 miles and again at 500 miles. Periodically check all hardware for tightness. Be sure you have all the needed parts and understand where they go. Also, please review the “Tools Needed” list to be certain you have the necessary tools to complete the installation.

PRODUCT USE INFORMATION

▲WARNING As a general rule, the taller a vehicle is the easier it will roll. We strongly recommend that seat belts and shoulder harnesses be worn at all times. Braking performance and capabilities are decreased when significantly larger/heavier tires and wheels are used. Do not add, alter, or fabricate any factory or after-market parts which increase vehicle height over the intended height of the Rough Country product purchased. Rough Country makes no claims regarding lifting devices and excludes any and all implied claims. We will not be responsible for any product that is altered.

NOTICE TO DEALER AND VEHICLE OWNER

▲NOTICE Any vehicle equipped with any Rough country product must have the “Warning to Driver” decal installed on the sun visor or dash. The decal is to act as a constant reminder for whoever is operating the vehicle of its unique handling characteristics. INSTALLING DEALER—It is your responsibility to install the warning decal and to forward these installation instructions on too the vehicle owner for review and to be kept in the vehicle for its service life.

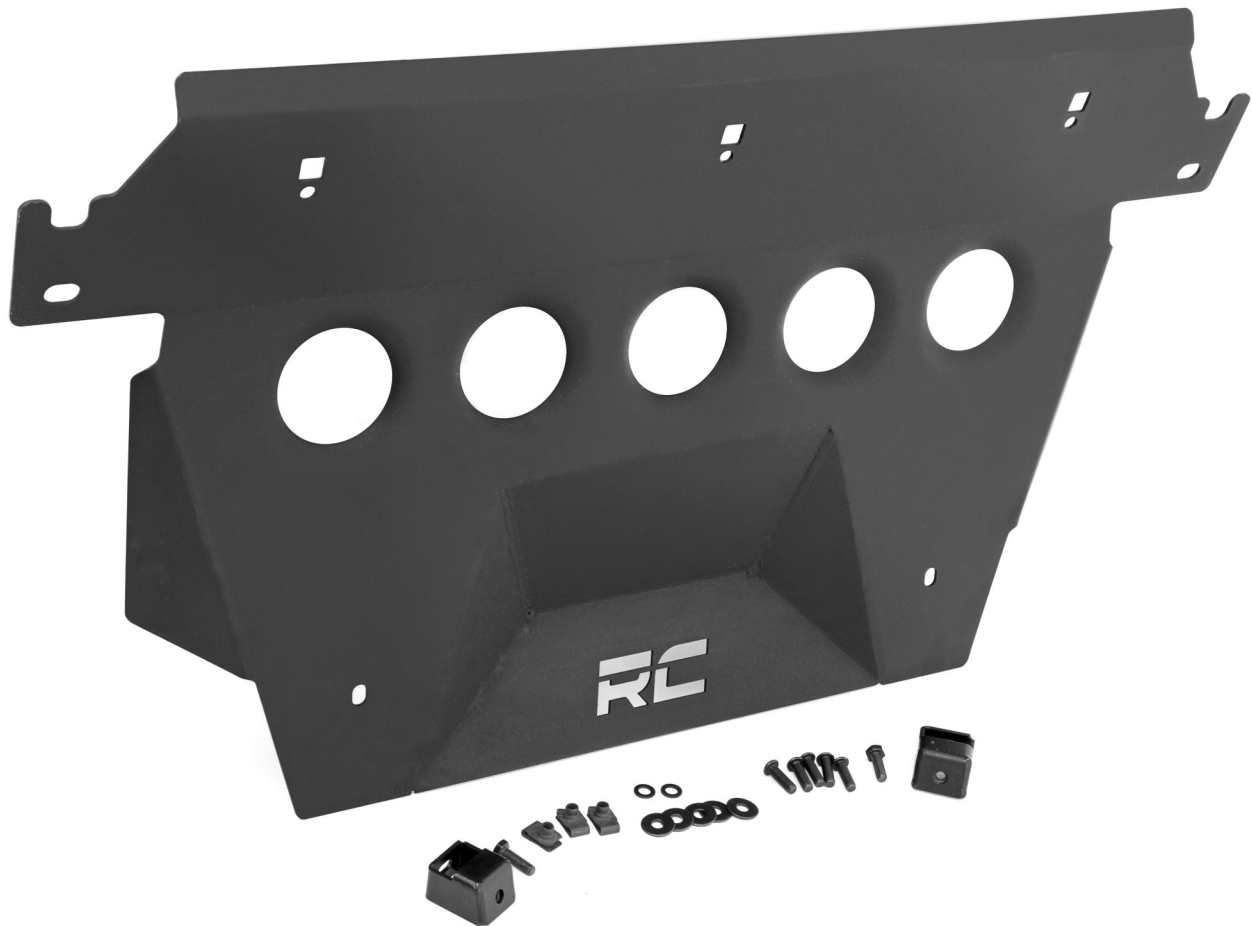


07-20 Tundra Skid Plate

TOOLS NEEDED:
Metric Wrench/Socket
5mm Allen Wrench
13mm Socket
17mm Socket

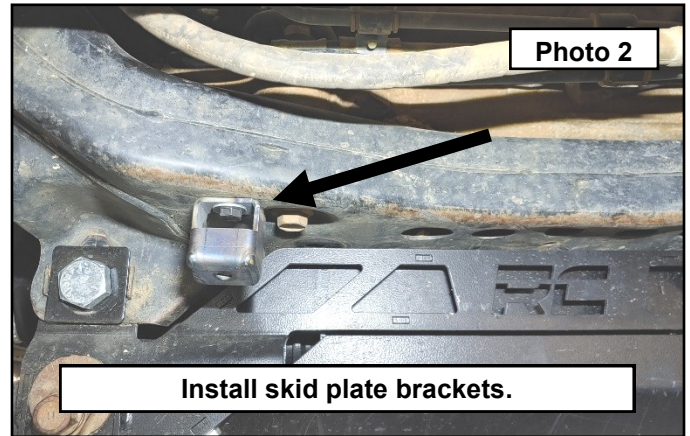
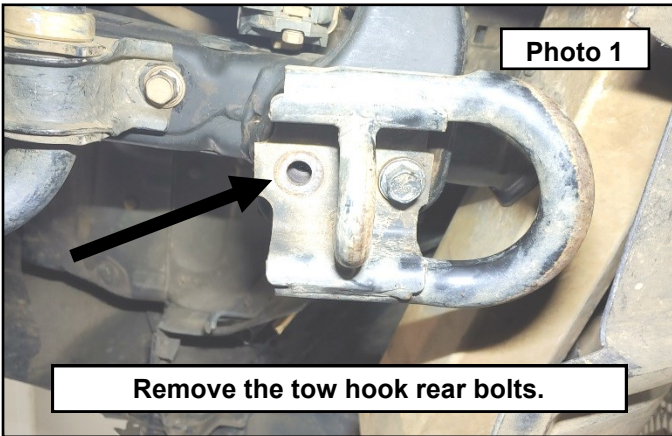
KIT CONTENTS:
Skid Plate (1)
Skid Plate Mount (2)

HARDWARE INCLUDED:
M8 Allen Bolt (5)
M8 Bolt (2)
M8 Fender Washer (5)
M8 Flat Washer (2)
M8 Clip Nut (3)

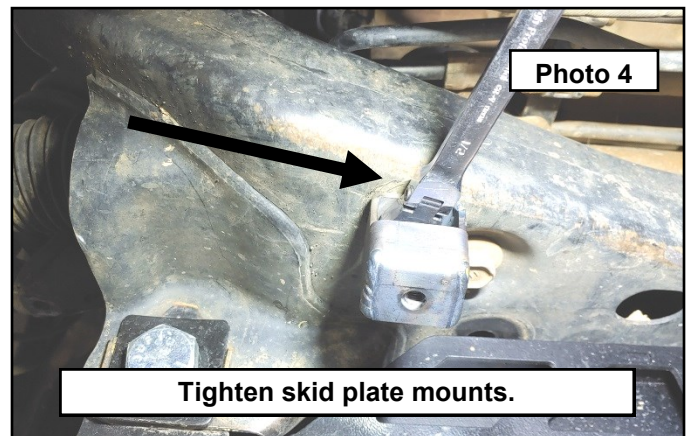
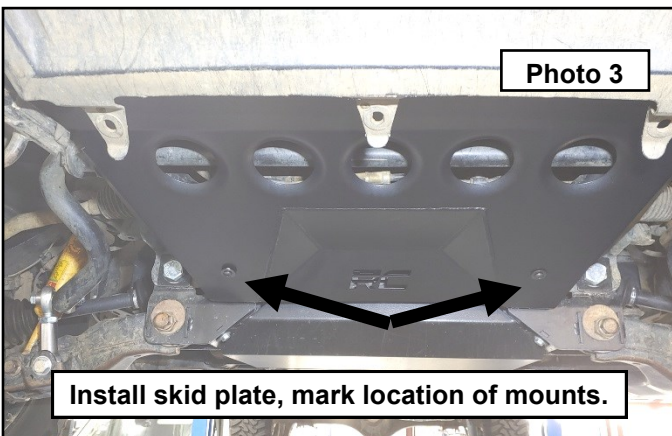


Skid Plate Installation:

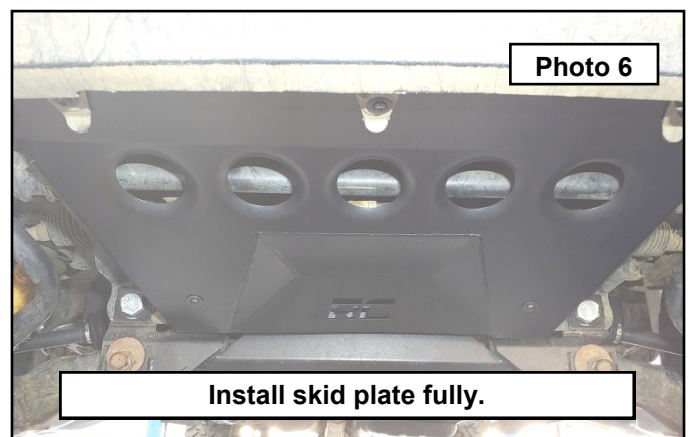
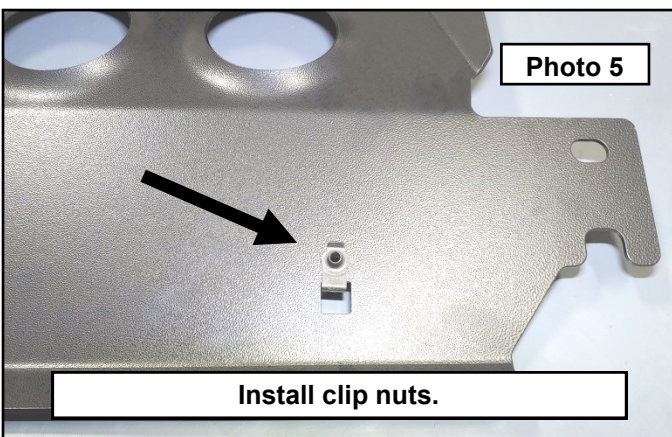
1. Park your vehicle on a clean flat surface, engage the parking brake and block the rear tires.
2. If you have a stock skid plate installed, remove using a 12mm socket.
3. Remove the rearmost tow hook bolts. Loosen but do not remove the front tow hook bolts. **Photo 1**
4. Install the skid plate mounts to the frame using the provided M8 hex head bolts and washers. The brackets are slotted and will need to be left loose until their final location is determined. **Photo 2**



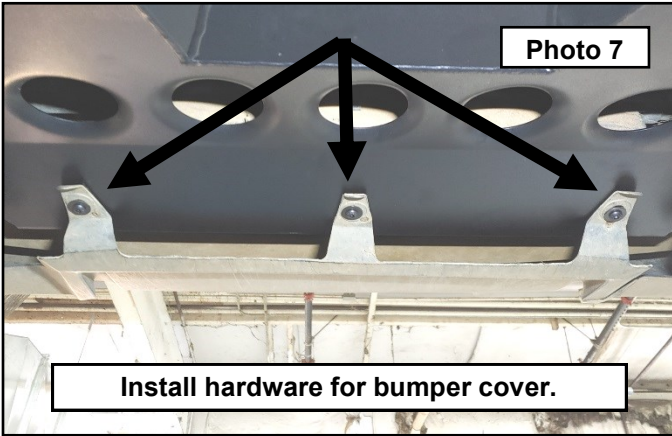
5. Install the skid plate to the tow hook mounting area by sliding it between the tow hook bracket and frame rail. Install the rear most bolt of the tow hook bracket. **Photo 3**
6. Line up the previously installed skid plate mounts. Once their location is set, remove the skid plate and torque the mount hardware to 15 ft-lbs. **Photo 4**



7. Install the provided body clip nuts to the skid plate if you have a stock bumper. If you are running an aftermarket bumper, skip this step. **Photo 5**
8. Reinstall the skid plate as above, using the stock tow hook hardware and the provided M8 button head and fender washers. Torque the tow hook mount hardware to 65 ft-lbs, and the M8 Allen bolt to 10 ft-lbs. **Photo 6**



9. If you have a stock bumper, install the provided M8 Button head bolts and fender washers as shown to hold the plastic bumper cover. Do not over tighten. **Photo 7**



By purchasing any item sold by Rough Country, LLC, the buyer expressly warrants that he/she is in compliance with all applicable , State, and Local laws and regulations regarding the purchase, ownership, and use of the item. It shall be the buyers responsibility to comply with all Federal, State and Local laws governing the sales of any items listed, illustrated or sold. The buyer expressly agrees to indemnify and hold harmless Rough Country, LLC for all claims resulting di-