

# ROUGH COUNTRY

## SUSPENSION SYSTEMS®



# 10912BAG

## 07-13 GMC 1500 PreRunner Bumper

Thank you for choosing Rough Country for all of your suspension needs.

Rough Country recommends that a certified technician install this system. In addition to these instructions, professional knowledge of disassemble/reassembly procedures as well as post installation checks must be known. Attempts to install this system without this knowledge and expertise may jeopardize the integrity and/or operating safety of the vehicle. Please read all the instructions before beginning the installation. Check the kit hardware against the "Kit Contents" list below. If question exist, please call us @1-800-222-7023. We will be happy to answer any questions concerning this product. Check all fasteners for proper torque. Check to ensure for adequate clearance between all components. Check and retighten wheels at 50 miles and again at 500 miles. Periodically check all hardware for tightness. Be sure you have all the needed parts and understand where they go. Also, please review the "Tools Needed" list to be certain you have the necessary tools to complete the installation.

### PRODUCT USE INFORMATION

**▲WARNING** As a general rule, the taller a vehicle is the easier it will roll. We strongly recommend that seat belts and shoulder harnesses be worn at all times. Braking performance and capabilities are decreased when significantly larger/heavier tires and wheels are used. Do not add, alter, or fabricate any factory or after-market parts which increase vehicle height over the intended height of the Rough Country product purchased. Rough Country makes no claims regarding lifting devices and excludes any and all implied claims. We will not be responsible for any product that is altered.

### NOTICE TO DEALER AND VEHICLE OWNER

**▲NOTICE** Any vehicle equipped with any Rough country product must have the "Warning to Driver" decal installed on the sun visor or dash. The decal is to act as a constant reminder for whoever is operating the vehicle of its unique handling characteristics. **INSTALLING DEALER**—It is your responsibility to install the warning decal and to forward these installation instructions on too the vehicle owner for review and to be kept in the vehicle for its service life.



## 07-13 GMC PreRunner Bumper

### TOOLS NEEDED:

Jack  
Safety Stands  
Wheel Chocks  
Grinder  
Sander  
Clamps/Locking Pliers  
Razor Knife  
Wire Strippers/Cutters  
Drill  
3/4" Bit  
Allen Wrench Set (SAE/Metric)  
Metric Wrench/Socket  
10mm  
15mm  
18mm  
19mm  
21mm

### KIT CONTENTS:

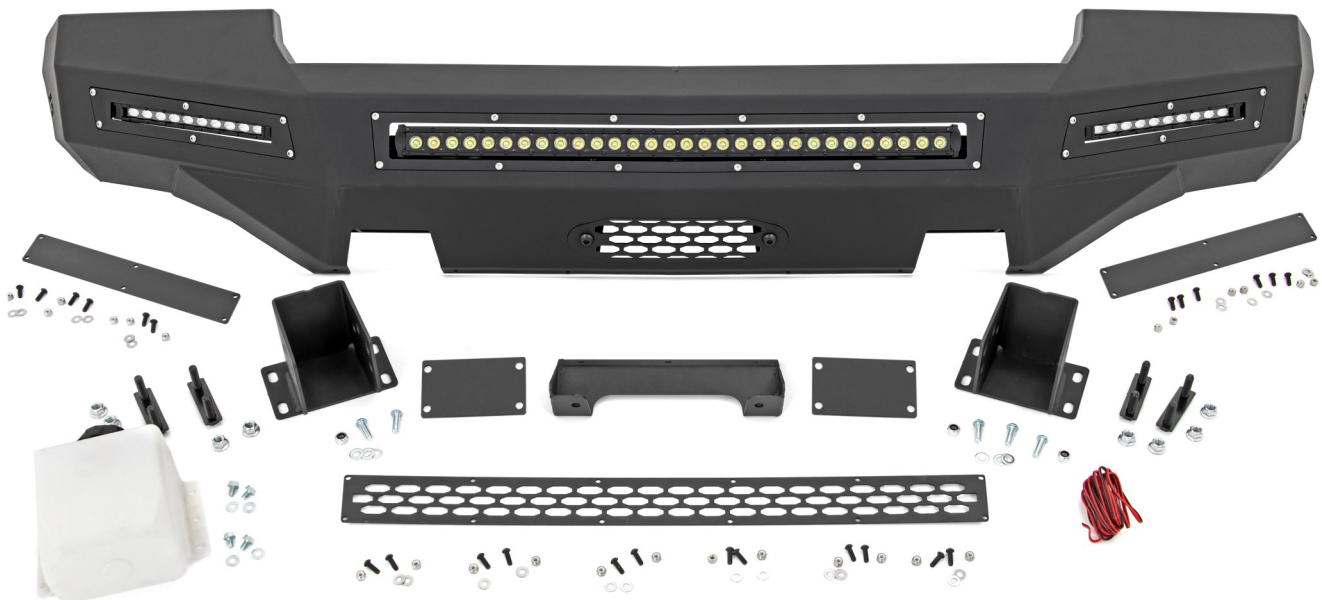
Bumper (1)  
Frame Mounts (2)  
30" Light Trim Ring  
30" Light Grill Block Off Plate  
10" Light Trim Ring (2)  
10" Light Block Off Plate (2)  
Winch Grill Block Off Plate

### OPTIONAL ITEMS:

10" Slim Line Light Bar  
Part # (70410BL or 70410)  
30" Single Row Light Bar  
Part # (7030BL or 7030)  
9,500/12,000lb Winch  
Part # (PRO9500S or PRO1200S)  
Extension Cable  
Part # (RS130-1)  
Replacement Tow Hook Brackets  
Part # (RS148)

### HARDWARE INCLUDED:

1/4" Stainless Allen Bolt (24)  
1/4" Stainless Black Allen Bolt (24)  
1/4" Washer (24)  
1/4" Raw Nut (7)  
5/16" Self Thread Bolts (4)  
5/16" Flat Washer (4)  
10mm Allen Bolt (5)  
10mm Nut (3)  
10mm Washer (6)  
12mm Black Allen Bolt (2)  
12mm Flange Nut (8)  
12mm Raw Nut (2)  
12mm Washer (8)  
Bolt Tab (4)  
1/4" Spacer (2)  
1' Wire Extension (1)  
Butt Connectors (4)



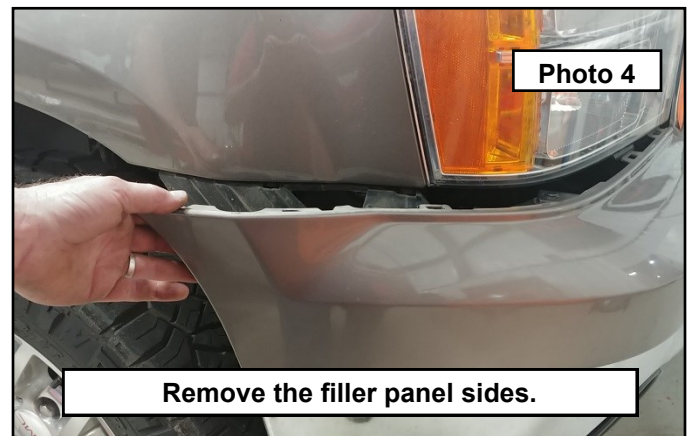
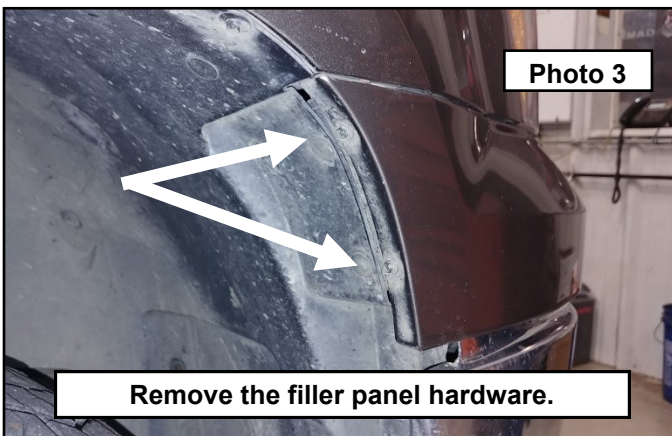


### **Bumper Removal and assembly**

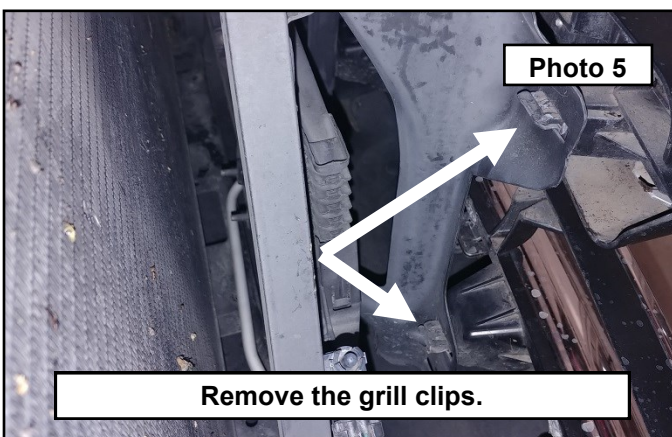
1. Park your vehicle on a clean flat surface, engage the parking brake and block the rear tires.
2. Open the hood and disconnect the negative terminal on the battery.
3. Remove the core support shroud plastic push pins and the shroud. **Photo 1**
4. Set aside for later. **Photo 2**



5. Remove the filler panel hardware on both sides of the vehicle using a 7mm socket. **Photo 3**
6. Grab the filler panel and pull out and down to pop out of the retainer. **Photo 4**

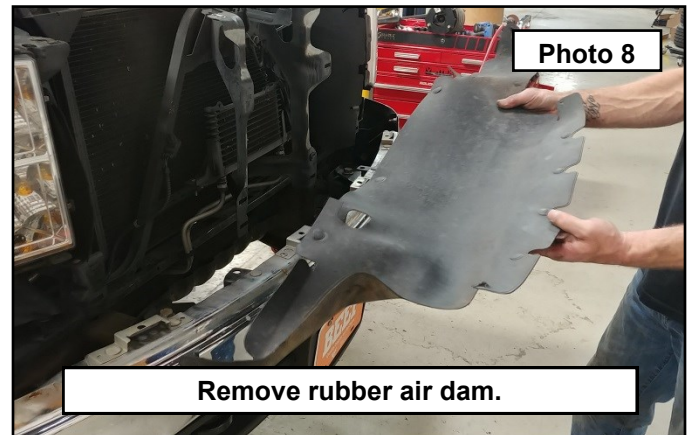
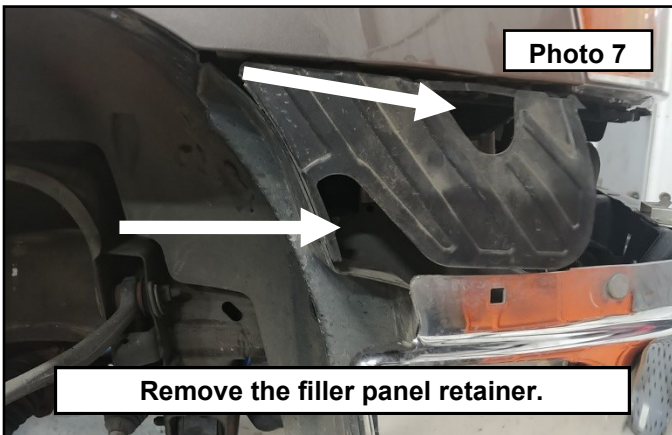


7. Remove the upper grill hardware using a 10mm socket. Have a helper reach between the core support and the grill to pinch the metal clips holding the grill in place while you pull back away from the vehicle. This is best done by two people to keep the grill from popping back into place. **Photo 5**
8. Pull the grill and filler panel away from the vehicle and set aside. **Photo 6**

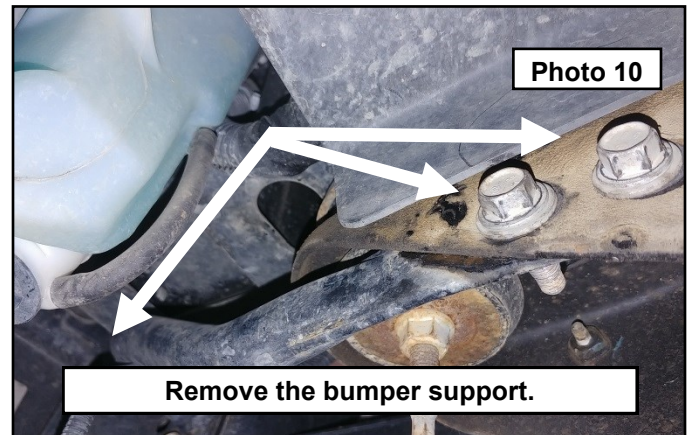
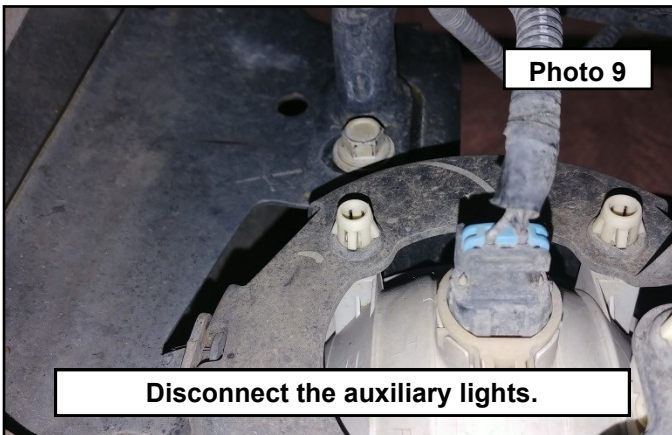




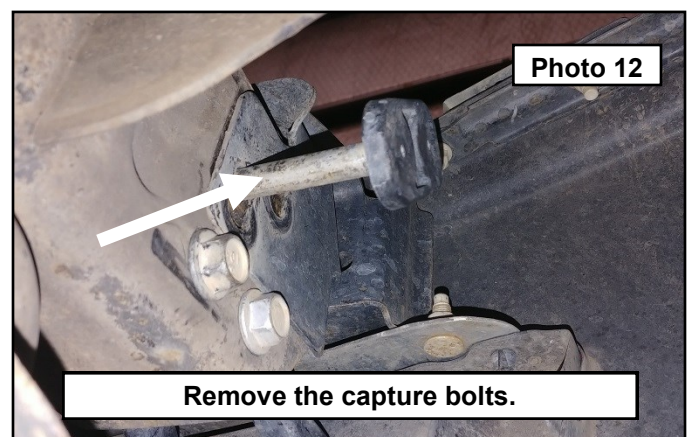
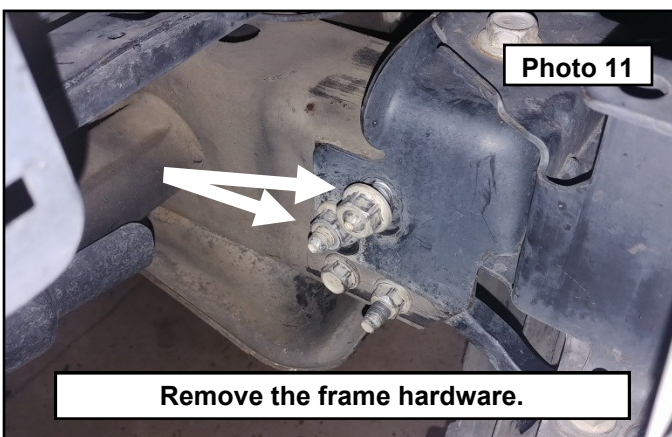
9. Remove the filler panel retainer using an extension and 10mm socket. Discard all. You will have to look into the holes to see the bolts holding this piece to the fender. **Photo 7**
10. Remove the flexible rubber air dam between the bumper and the core support. It is held in by plastic push pins. Discard all. **Photo 8**



11. Disconnect the auxiliary lights. **Photo 9**
12. Remove the bumper side supports from the frame and bumper using a 15mm socket. **Photo 10**

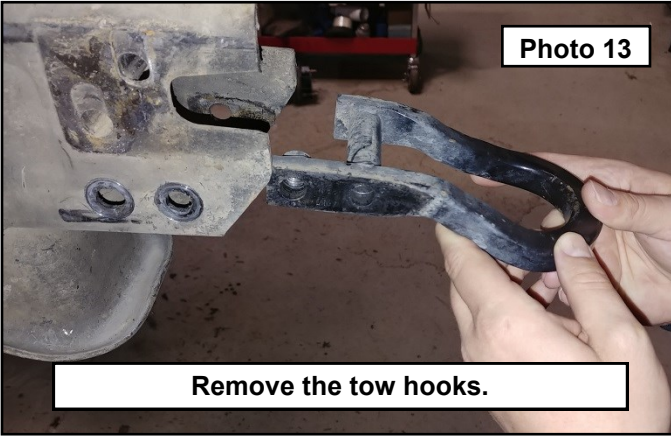


13. Remove the bumper frame mount hardware using a 21mm socket. **Photo 11**
14. Using a helper, support the bumper while removing the captured bolts and pull the bumper away from the vehicle and set aside. **Photo 12**

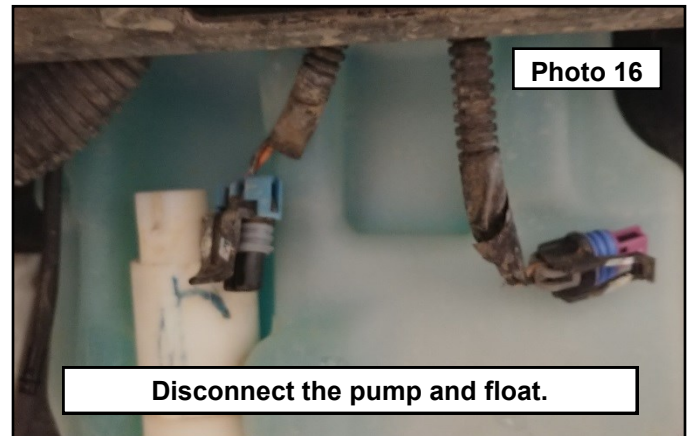
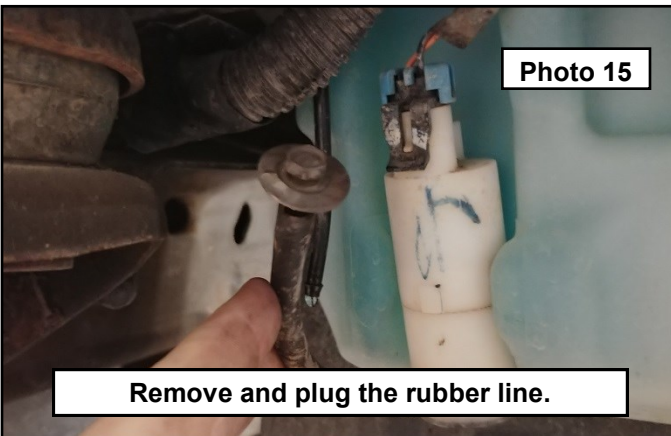




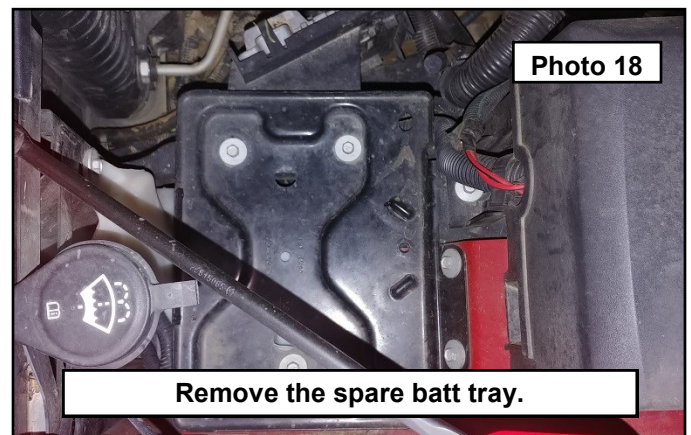
15. Remove the factory tow hook hardware using a 18mm socket. Save all for reinstallation later. **Photo 13**
16. Inside the fender well there are two bolts holding the liner to the washer tank. Remove using a 10mm socket. **Photo 14**



17. Remove the rubber washer hose from the plastic hard line and use one of the removed bolts to plug the rubber washer hose. **Photo 15**
18. Disconnect the washer tank pump and the float electrical connectors. **Photo 16**



19. Pull back the inner liner and locate the inner bolt holding the washer tank to the core support. Remove using a 10mm socket. Discard. **Photo 17**
20. Under the hood, remove the spare battery tray using a 10mm socket and set aside. **Photo 18**

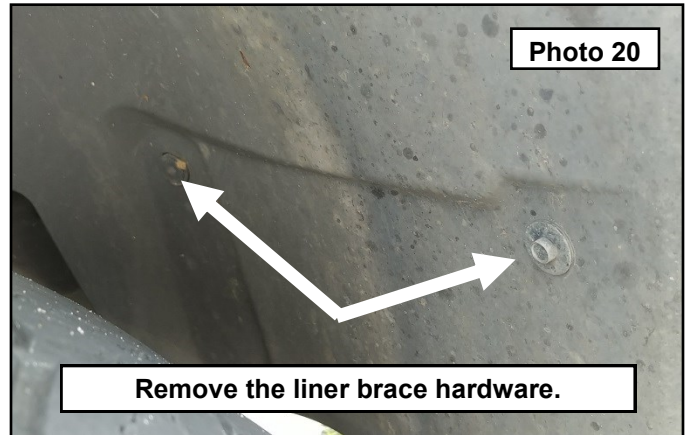
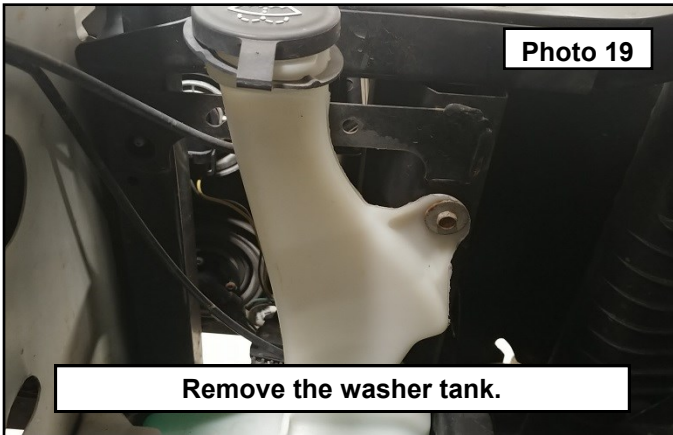




21. Have a helper hold the washer tank while you remove the remaining bolt holding the tank in place using a 10mm socket. Once removed, set aside and reinstall the spare battery tray using the factory hardware. Torque to 5 ft-lbs.

**Photo 19**

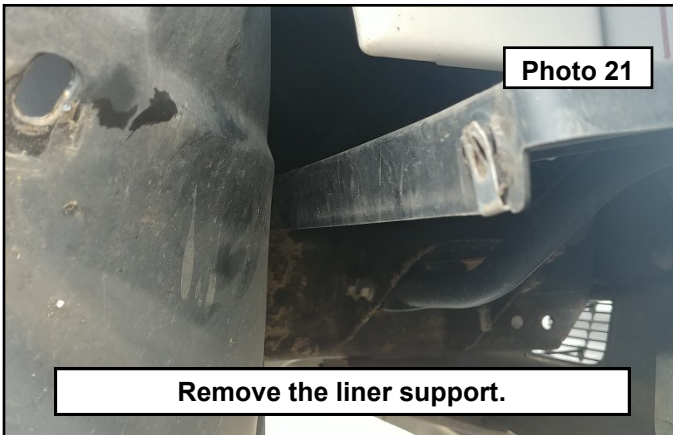
22. In the passenger wheel well, remove the two bolts holding the inner brace assembly using a 10mm socket. **Photo 20**



23. Peel the inner liner back and remove the remaining bolts holding the liner support to the core support. Discard all.

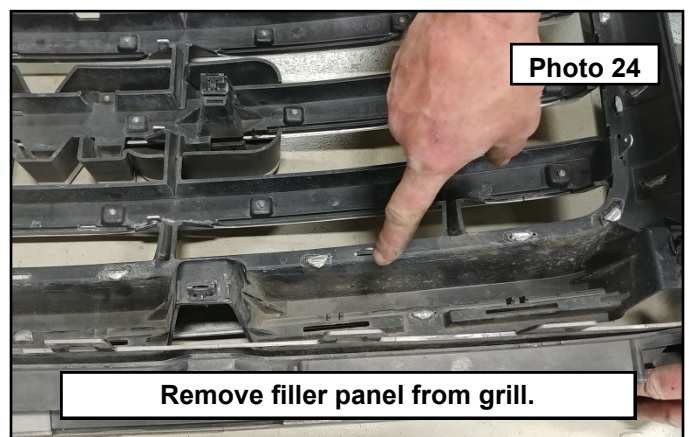
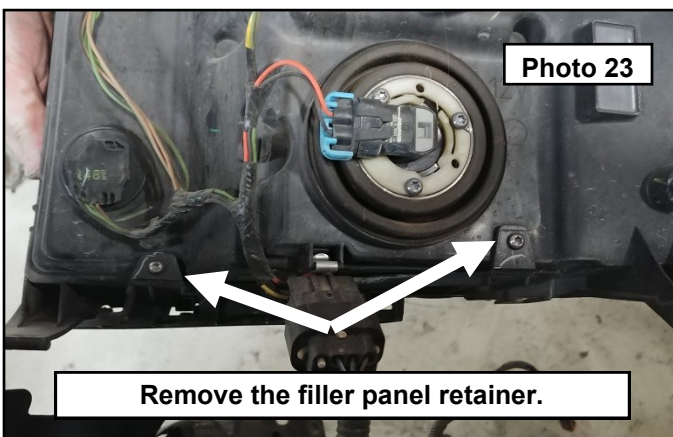
**Photo 21**

24. Remove the headlights from the vehicle using a 10mm socket. This is to access the filler panel retainer that needs to be removed for proper fitment of the new bumper. **Photo 22**

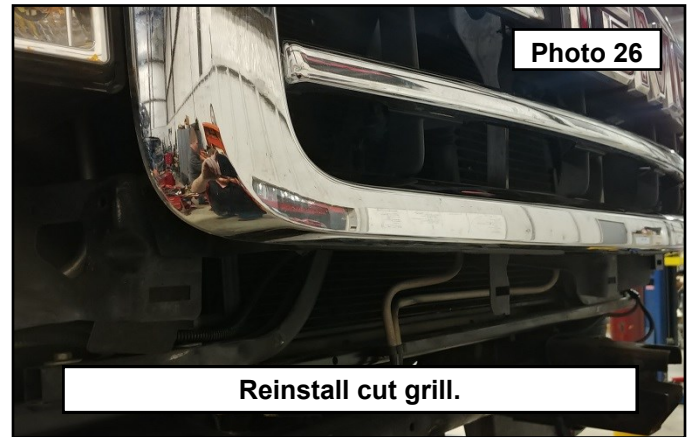
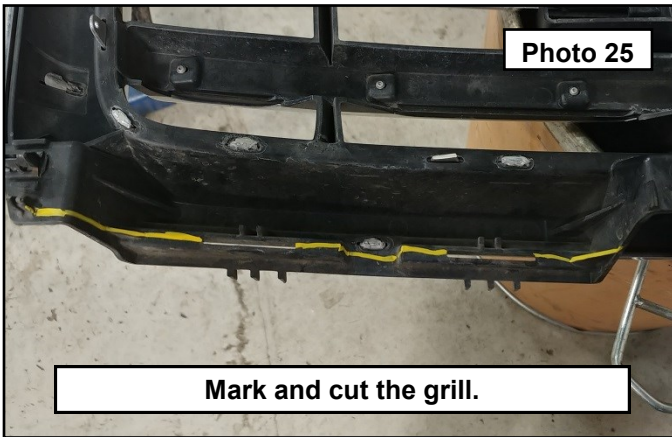


25. Flip the headlight around and remove the two screws holding the filler panel retainer to the headlight assembly using a T15 Torx bit. Discard all. Reinstall the headlights using the factory hardware. **Photo 23**

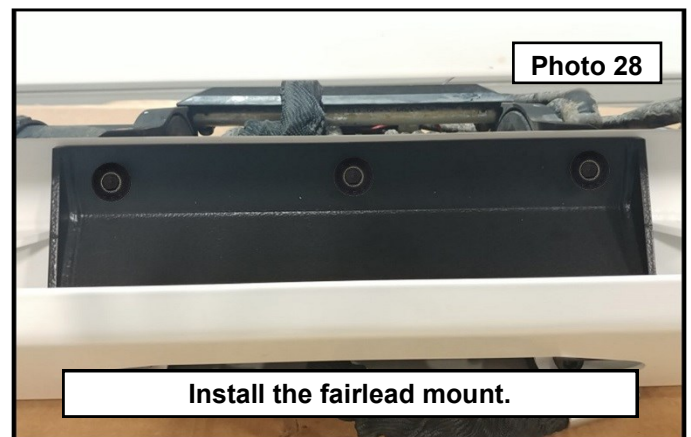
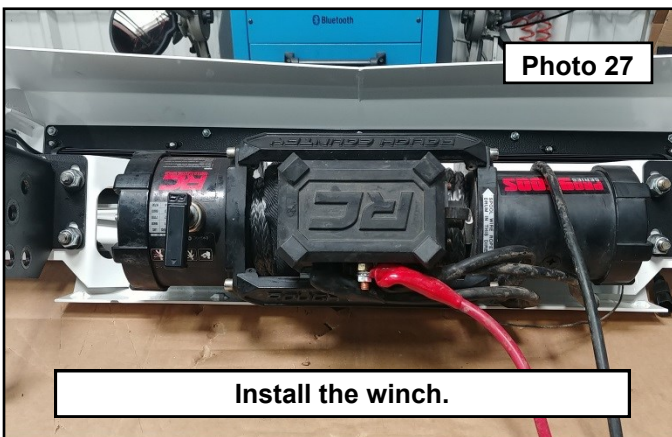
26. Remove the filler panel from the grill by pressing in the factory plastic clips along the length of the grill. Discard the filler panel. **Photo 24**



27. With the filler panel removed from the grill, mark a line connecting the clip holes where the filler panel snapped into place. You will be cutting this off flush with the bottom of the grill. Do not cut into any of the chromed or painted area. You only want to remove the filler panel retainer plastic. Sand any burrs smooth. **Photo 25**
28. Reinstall the grill using the metal clips and the factory hardware. Do not over tighten the bolts. The plastic is brittle and can crack if over tightened. **Photo 26**

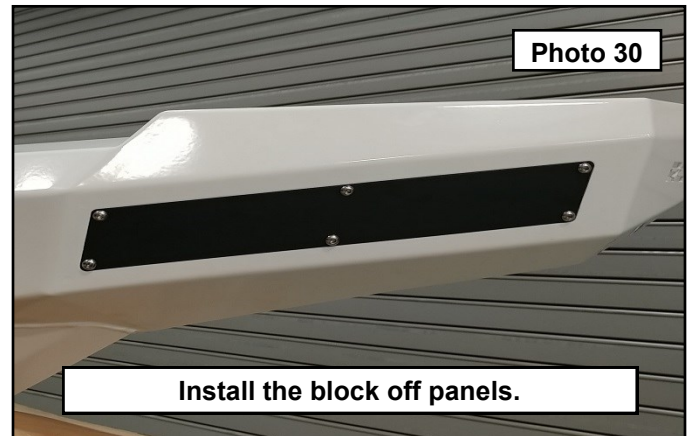
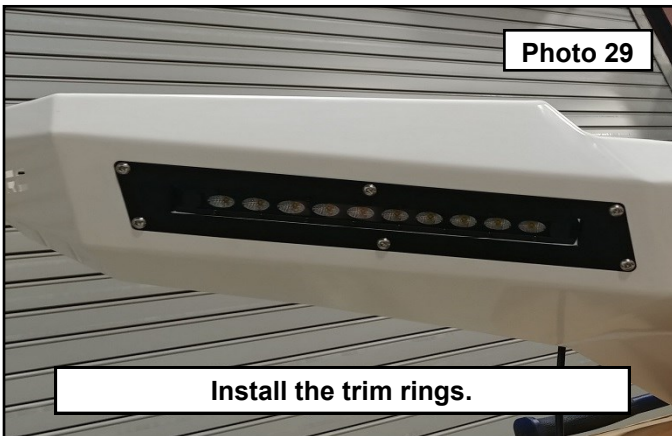


29. If you are installing a Rough Country 9,500 or 12,000 lb winch with synthetic rope, install the provided square nuts that came in the hardware bag with the winch into the base of the winch. Have an assistant hold the winch up to the bumper while you install the provided 10mm button head bolts into the base of the winch. You will find that you have to access the lower holes through the front fairlead opening and the upper holes through the light bar opening. Make sure to route the winch rope through the hole in the front of the bumper. Once all are started, torque the lower bolts to 30 ft-lbs. **Photo 27**
30. Remove the upper button head bolts, and install the winch fairlead by dropping it behind the front skin. Install the remaining 10mm button head bolt (with the head facing the winch), washers, and nut. Torque all to 30 ft-lbs. **Photo 28**

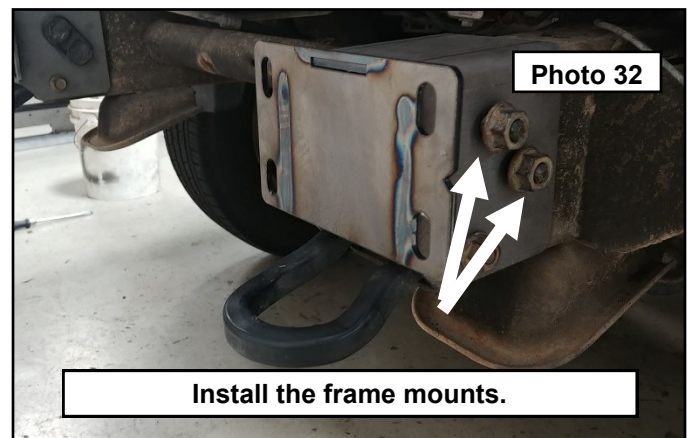
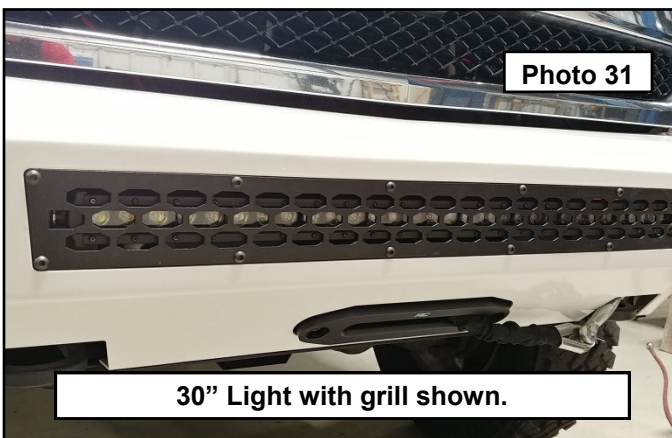




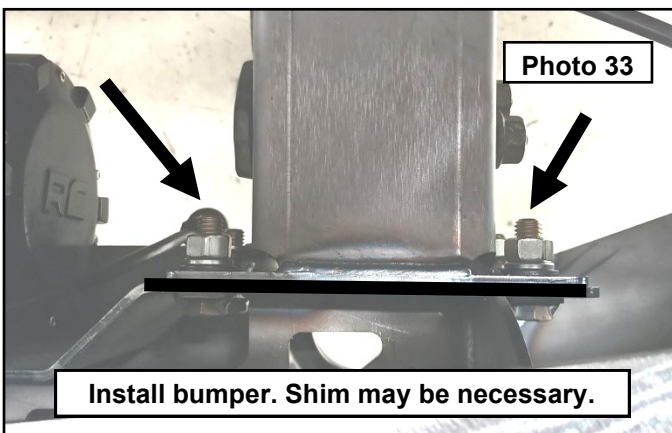
31. Install the light trim rings to the mounts using the 1/4" Allen button head bolts, stainless washer (for the nut side) and nuts provided if you have purchased the lighting options. If you did not purchase the lighting options, then you will use the block off plates on the outer wings and center grill cover. You have a choice of black stainless or silver stainless button head bolts for this purpose. **Photo 29/30**



32. If installing any of the lighting options, use the hardware provided in the light boxes. Snug the light hardware down enough to hold the lights tightly in place. Install any necessary washers or spacers needed to make the lights fit. This bumper is designed around the Rough Country 30" single row led light bar, and 10" slim line led light bars in black or chrome series. You can also use the center grill option with or without the light. **Photo 31**
33. Install the frame mounts to the frame using the stock hardware. Do not tighten at this time. **Photo 32**

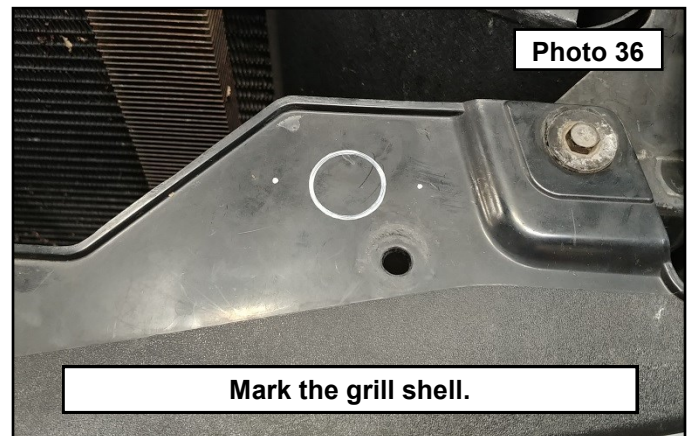
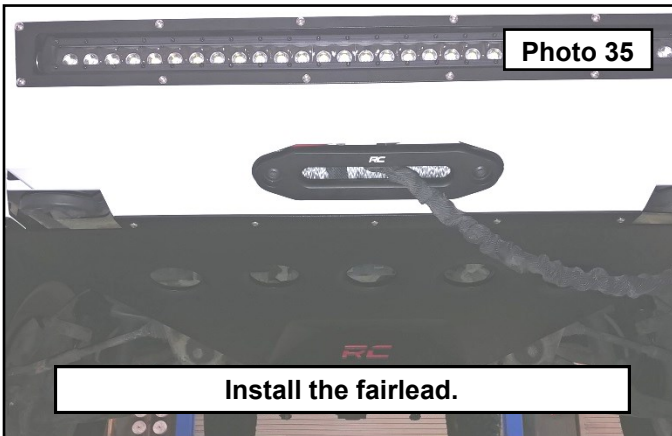


34. Install the bumper to the frame mounts using the provided bolt tabs and 12mm washers, lock washers, and nuts. Snug all the hardware up enough to hold the bumper in place. **Due to frame variations, you may need to use the supplied shim between the frame mount and bumper to clear the winch controller. Install if needed. Photo 33**
35. Have an assistant help with leveling and centering the bumper to the body. The bumper can be adjusted up/down, left/right via the 12mm hardware and tilted slightly front/back via the stock hardware. Once satisfied with the fit, torque the 12mm hardware to 95 ft-lbs, and the frame hardware to 120 ft-lbs. If you have the stock tow hooks, these can be reinstalled using the factory hardware, torque to 45 ft-lbs. If you are missing the factory tow hooks and are opting for the winch install, you will need to buy replacement hooks and hardware. **Photo 34**

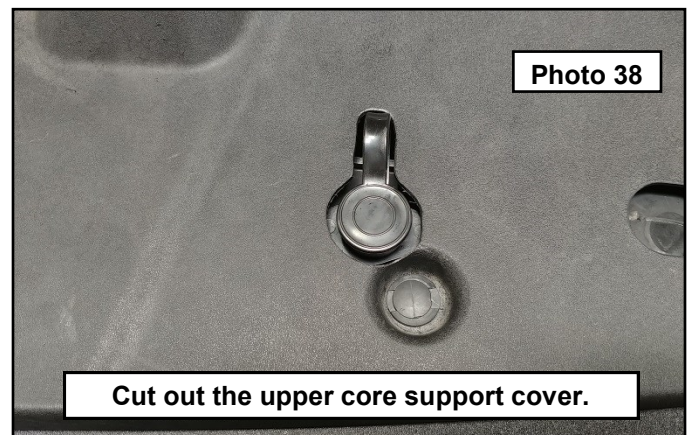
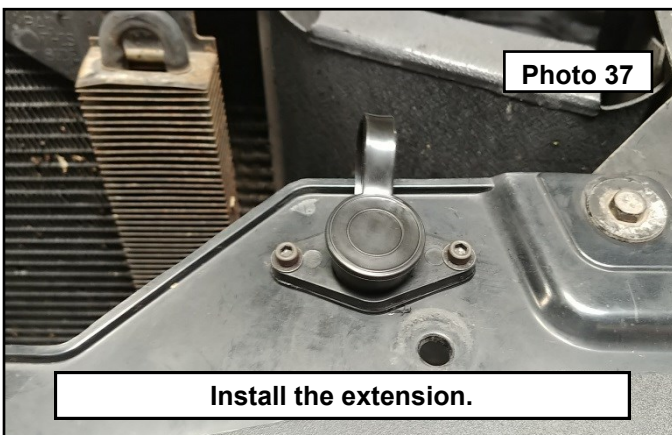




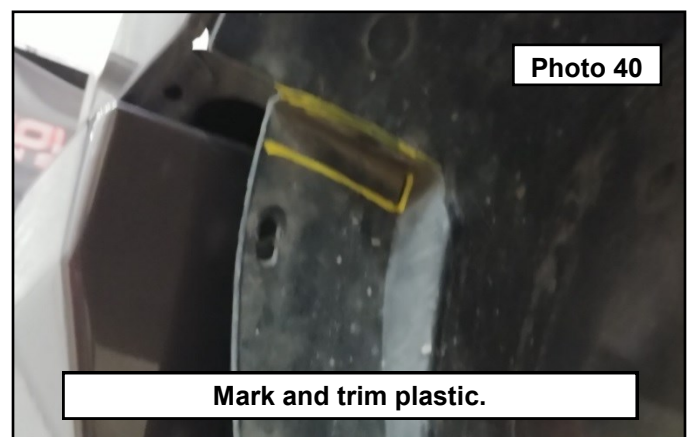
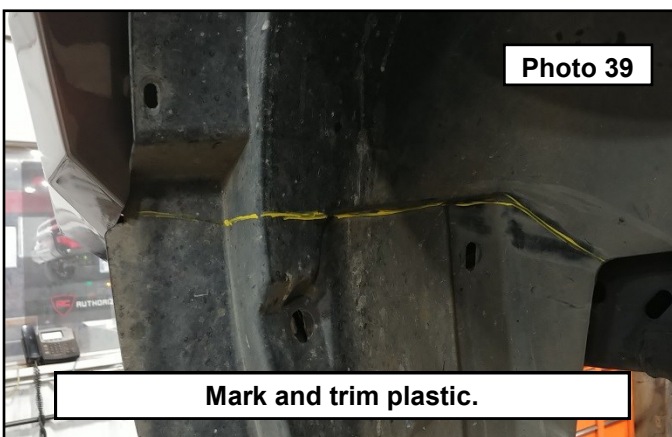
36. Install the winch fairlead using the provided 12mm button head bolts from the bumper hardware bag. Torque to 30 ft-lbs. If you are not using a winch, install the winch block off grill using the 12mm button head bolts and 1/4" thick spacers between the grill and bumper. Line up until all the gaps are even and torque the bolts to 5 ft-lbs. **Photo 35**
37. If you installed a winch and/or lights, run the electrical accordingly.
38. If you purchased the winch control extension cable, a good place to mount this is on the grill shell under the hood. Access this area by removing the core support cover plastic rivets and set aside.
39. Make a template using the extension base. **Photo 36**



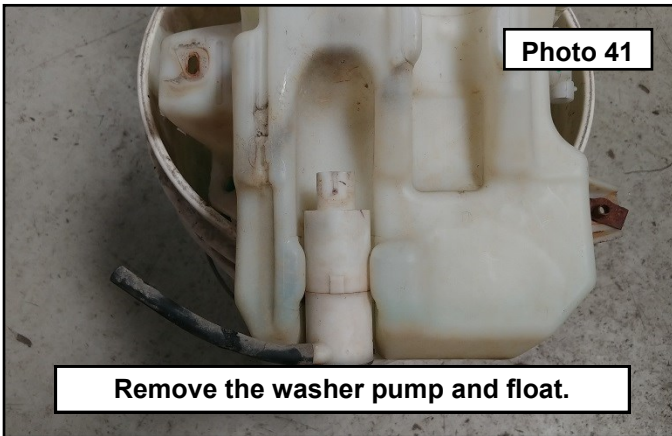
40. Drill out the holes and bolt to the grill shell. Run the cable to the winch control box. **Photo 37**
41. Place the core support cover back into place. Mark the location of the extension base. Use a rotary tool to make a hole in the cover for the extension to pass through. **Photo 38**



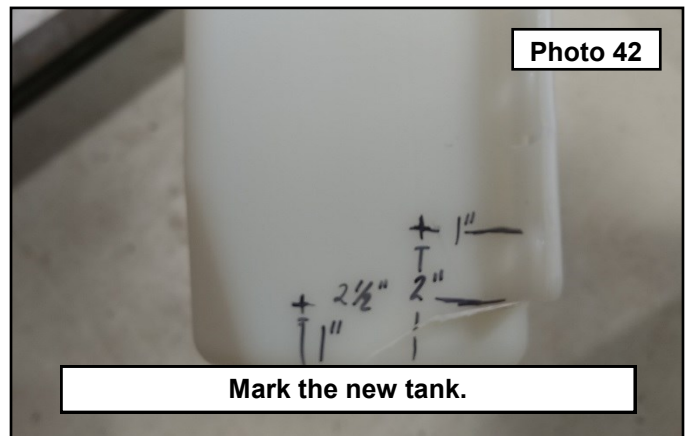
42. Once the bumper is installed and all gaps are set, mark the inner liners as shown. **Photo 39**
43. Use a razor knife or other suitable cutting tool, trim the plastic so that it tucks nicely behind the bumper end caps. Repeat for both sides. **Photo 40**



44. Remove the pump and float from the original washer tank by gently twisting and pulling out of the tank. These are only held in by the rubber gasket. **Photo 41**
45. Make a measurement on the side of the new tank 1" up from the bottom and 2.5" from the side. Drill out a 3/4" hole at this point for the factory pump. Make a measurement on the front of the tank for the float 2" up from the bottom and 1" from the side for the float. Drill out to 3/4" as well. **Photo 42**

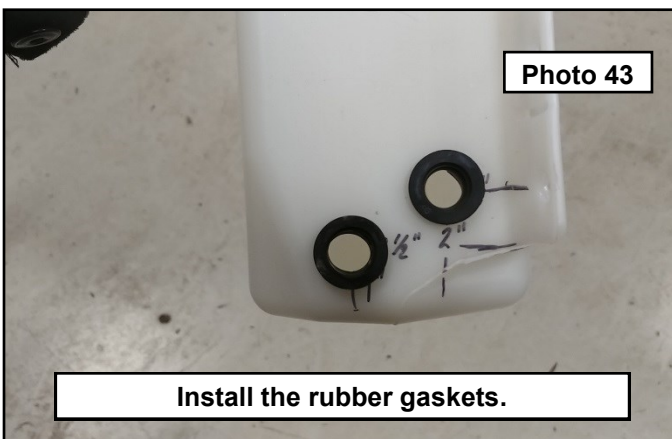


**Remove the washer pump and float.**

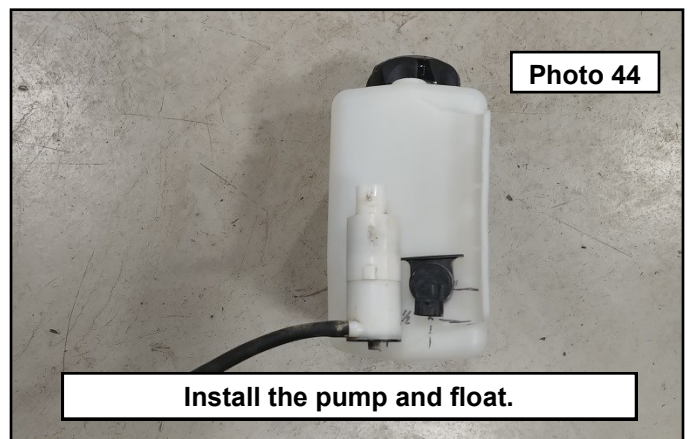


**Mark the new tank.**

46. Install the factory rubber gaskets to the new tank. **Photo 43**
47. Install the pump and the float. Make sure they are both fully seated in the gaskets. Fill up the tank and check for leaks. **Photo 44**

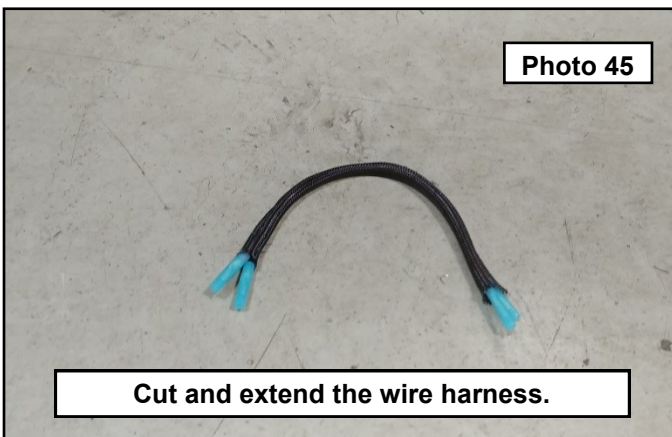


**Install the rubber gaskets.**

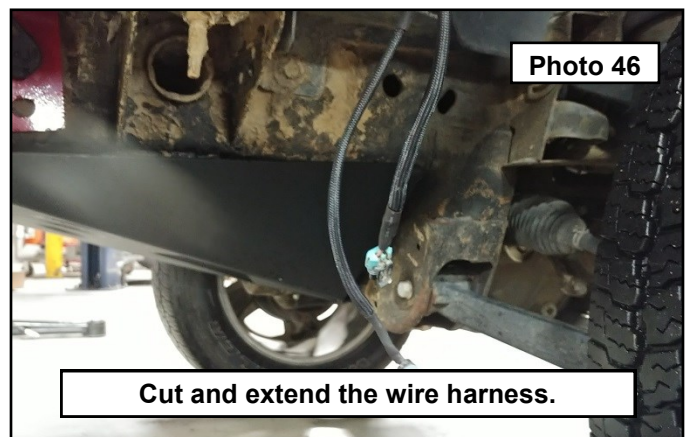


**Install the pump and float.**

48. Cut the provided wire extension in half. Make the wire extensions; strip 1/4" of wire sleeve off, crimp on butt connectors to the ends of each wire. **Photo 45**
49. Make sure the battery is disconnected, cut the wire harness for the pump and the float. Strip the wires and install the extension harnesses making sure to match the original harness colors on both ends. Repeat this for the remaining three wires. Route the extended wire harness to the inside of the engine bay. **Photo 46**



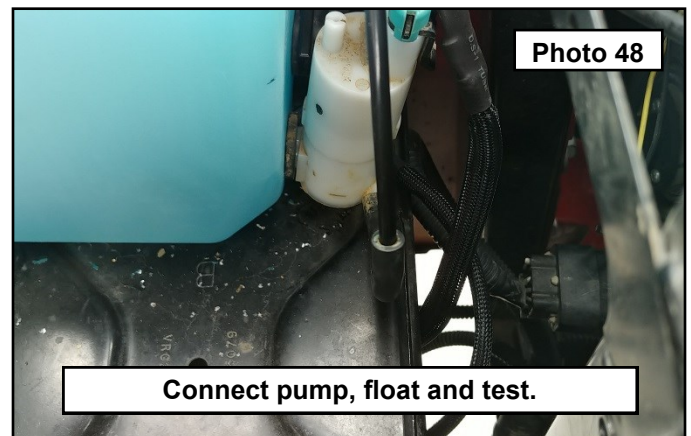
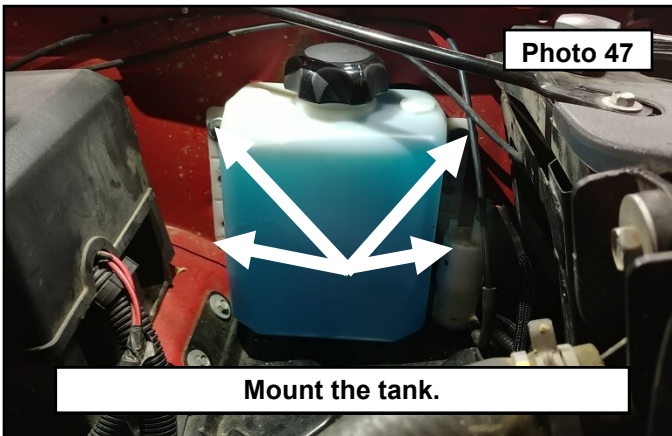
**Cut and extend the wire harness.**



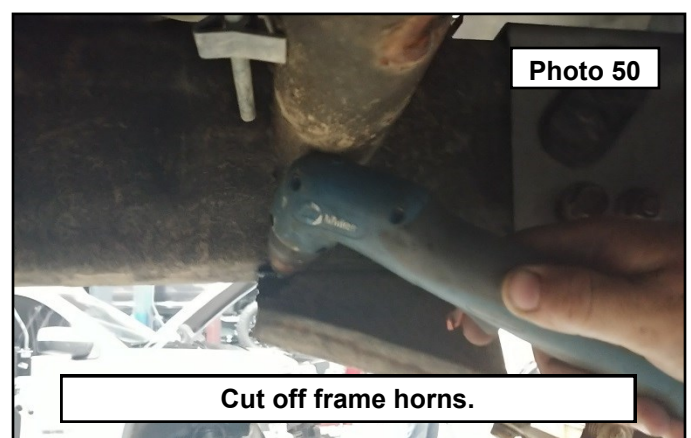
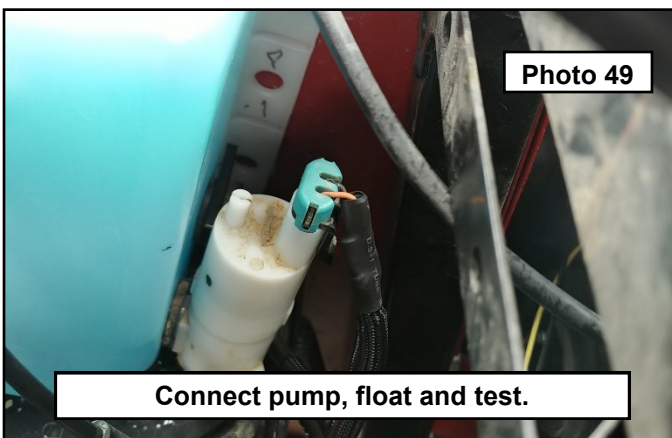
**Cut and extend the wire harness.**



50. On the fender where the spare battery tray is located, hold the tank to the fender and mark the 4 outer mounting points. Drill out with a 9/32" drill bit. Mount the tank into the vehicle fender well using 5/16" self tapping bolts. **Photo 47**
51. Route the washer tank hard line to the pump. Cut the line and install to the rubber line on the pump. **Photo 48**



52. Reconnect the pump, float, and battery. Test all electrical components for proper operation. **Photo 49**
53. For a finished look on the frame, the lower frame horns can be removed. This is also necessary if you purchased the optional lower skid plate designed for the bumper. Use a suitable cutting device, trim the frame horns off flush with the frame (plasma cutter shown.) Grind any burrs and paint using a quality rust preventative paint or under liner. **Photo 50**





By purchasing any item sold by Rough Country, LLC, the buyer expressly warrants that he/she is in compliance with all applicable , State, and Local laws and regulations regarding the purchase, ownership, and use of the item. It shall be the buyers responsibility to comply with all Federal, State and Local laws governing the sales of any items listed, illustrated or sold. The buyer expressly agrees to indemnify and hold harmless Rough Country, LLC for all claims resulting directly or indirectly from the purchase, ownership, or use of the items.

