

ROUGH COUNTRY
SUSPENSION SYSTEMS®



10910BAG

07-13 Chevy 1500 PreRunner Bumper

Thank you for choosing Rough Country for all of your suspension needs.

Rough Country recommends that a certified technician install this system. In addition to these instructions, professional knowledge of disassemble/reassembly procedures as well as post installation checks must be known. Attempts to install this system without this knowledge and expertise may jeopardize the integrity and/or operating safety of the vehicle. Please read all the instructions before beginning the installation. Check the kit hardware against the "Kit Contents" list below. If question exist, please call us @1-800-222-7023. We will be happy to answer any questions concerning this product. Check all fasteners for proper torque. Check to ensure for adequate clearance between all components. Check and retighten wheels at 50 miles and again at 500 miles. Periodically check all hardware for tightness. Be sure you have all the needed parts and understand where they go. Also, please review the "Tools Needed" list to be certain you have the necessary tools to complete the installation.

PRODUCT USE INFORMATION

▲ WARNING As a general rule, the taller a vehicle is the easier it will roll. We strongly recommend that seat belts and shoulder harnesses be worn at all times. Braking performance and capabilities are decreased when significantly larger/heavier tires and wheels are used. Do not add, alter, or fabricate any factory or after-market parts which increase vehicle height over the intended height of the Rough Country product purchased. Rough Country makes no claims regarding lifting devices and excludes any and all implied claims. We will not be responsible for any product that is altered.

NOTICE TO DEALER AND VEHICLE OWNER

▲ NOTICE Any vehicle equipped with any Rough country product must have the "Warning to Driver" decal installed on the sun visor or dash. The decal is to act as a constant reminder for whoever is operating the vehicle of its unique handling characteristics. **INSTALLING DEALER**—It is your responsibility to install the warning decal and to forward these installation instructions on too the vehicle owner for review and to be kept in the vehicle for its service life.



07-13 Chevy 1500 PreRunner Bumper

TOOLS NEEDED:

Jack
Safety Stands
Wheel Chocks
Grinder
Sander
Clamps/Locking Pliers
Razor Knife
Wire Strippers/Cutters
Drill
3/4" Bit
Allen Wrench Set (SAE/Metric)
Metric Wrench/Socket
10mm
15mm
18mm
19mm
21mm

KIT CONTENTS:

Bumper (1)
Frame Mounts (2)
30" Light Trim Ring
30" Light Grill Block Off Plate
10" Light Trim Ring (2)
10" Light Block Off Plate (2)
Winch Grill Block Off Plate

OPTIONAL ITEMS:

10" Slim Line Light Bar
Part # (70410BL or 70410)
30" Single Row Light Bar
Part # (7030BL or 7030)
9,500/12,000lb Winch
Part # (PRO9500S or PRO1200S)
Extension Cable
Part # (RS130-1)
Replacement Tow Hook Brackets
Part # (RS148)

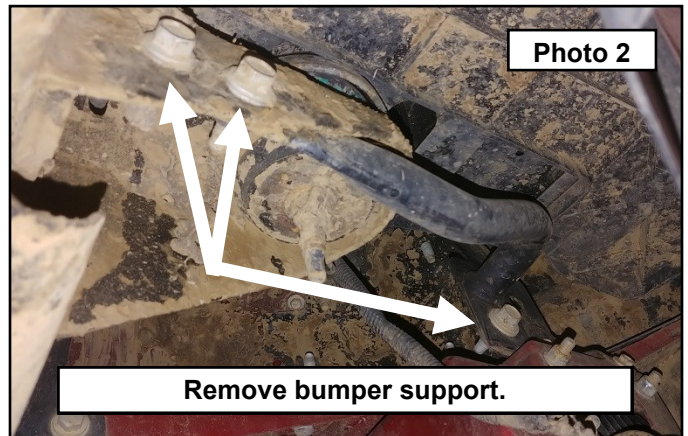
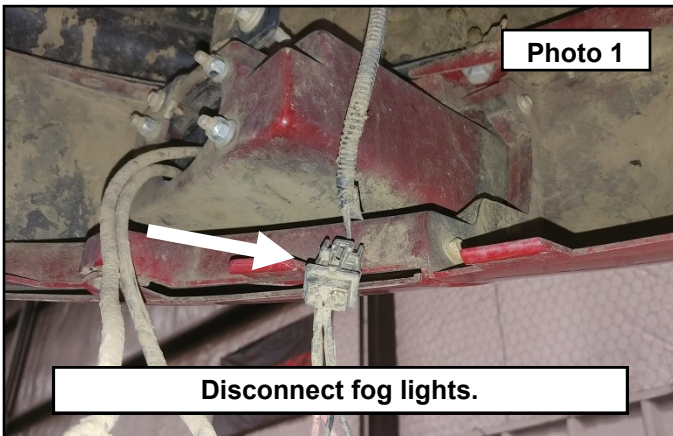
HARDWARE INCLUDED:

1/4" Stainless Allen Bolt (24)
1/4" Stainless Black Allen Bolt (24)
1/4" Washer (24)
1/4" Raw Nut (7)
5/16" Self Thread Bolts (4)
5/16" Flat Washer (4)
10mm Allen Bolt (5)
10mm Nut (3)
10mm Washer (6)
12mm Black Allen Bolt (2)
12mm Flange Nut (8)
12mm Raw Nut (2)
12mm Washer (8)
Bolt Tab (4)
1/4" Spacer (2)
1' Wire Extension (1)
Butt Connectors (4)

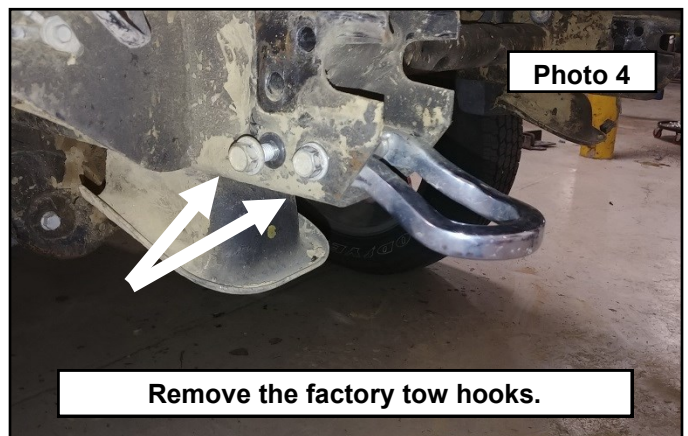
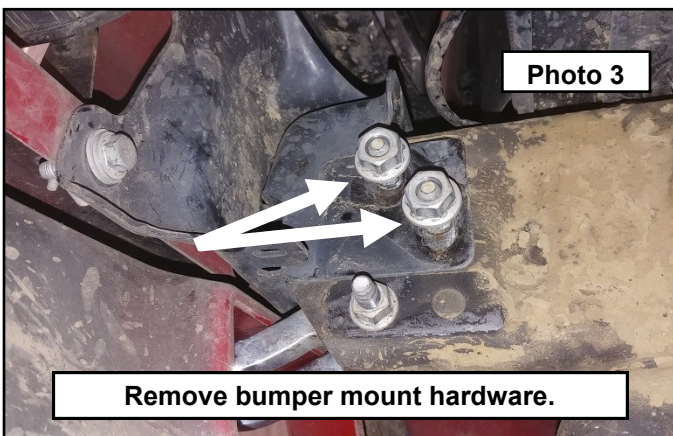


Bumper Installation

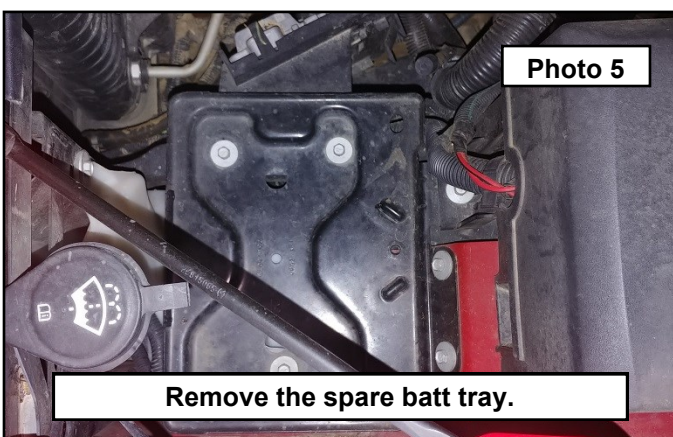
1. Park your vehicle on a clean flat surface, engage the parking brake and block the rear tires.
2. **Save all hardware removed from the vehicle unless otherwise noted.**
3. Open the hood and disconnect the negative terminal on the battery.
4. Under the vehicle, disconnect any auxiliary/fog lights if installed. **Photo 1**
5. Remove the bumper side braces from the frame using a 15mm socket. **Photo 2**



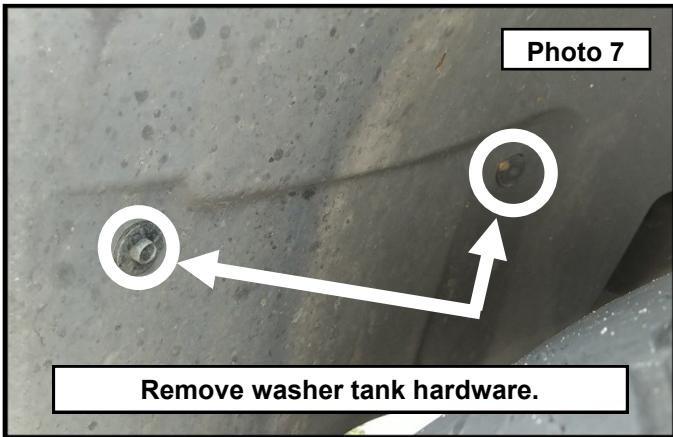
6. Remove the bumper mounting hardware from the frame using a 21mm socket. **Photo 3**
7. Remove the bolt tabs from the frame. Have an assistant help you remove the front bumper by pulling out and away from the vehicle and set aside.
8. Remove the factory tow hooks if installed using a 18mm socket and wrench. If you are missing these and are installing the winch option, you will need to purchase replacement hooks and hardware. **Photo 4**



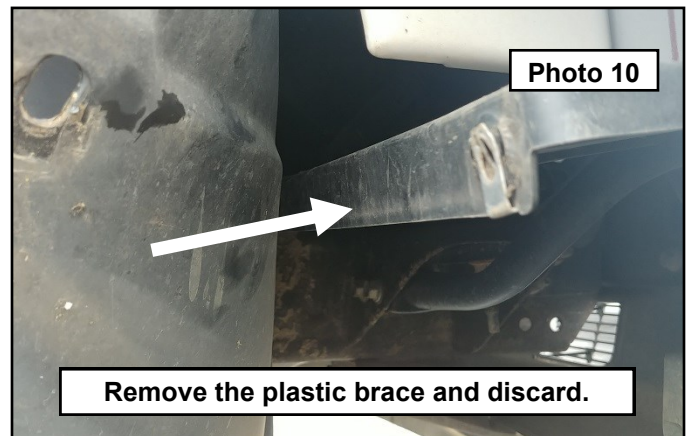
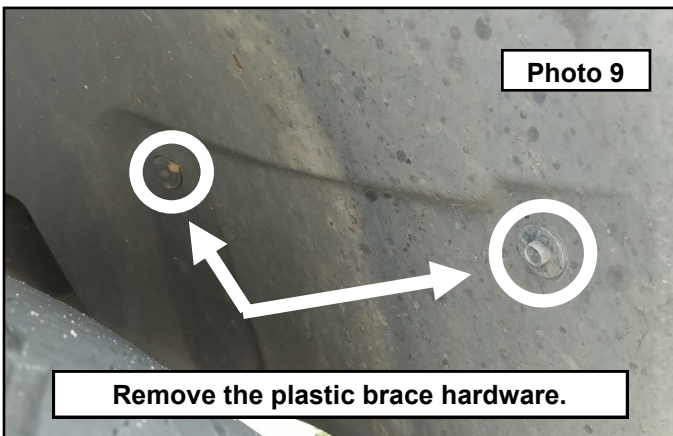
9. Under the hood, remove the 8 spare battery tray bolts on the driver side using a 10mm socket. Remove and set aside. **Photo 5**
10. Remove the washer tank hardware using a 10mm socket. **Photo 6**



11. In the driver wheel well, remove the washer tank bolt using a 10mm socket and plastic push pin. **Photo 7**
12. Remove the washer tank rubber hose from the hard plastic line. Plug the hose with the bolt removed from the wheel well or drain any fluid into a container. Disconnect the washer tank float and pump electrical connections at the pump and the float sensor. Pull the inner fender line back and feel for the remaining bolt on the side of the washer tank. Remove using a 10mm socket. Remove the washer tank from the vehicle and set aside. **Photo 8**



13. Reinstall the spare battery tray using the factory hardware and 10mm socket. Torque to 5 ft-lbs.
14. In the passenger side wheel well, remove the plastic brace hardware using a 10mm socket. **Photo 9**
15. Pull the liner back to see the bolt holding the plastic brace in place on the core support. Remove using a 10mm socket. Discard the plastic brace and hardware as it will not be reused. **Photo 10**



16. Lay out all your bumper pieces. Lay out all of your hardware. **Photo 11**



17. If you are installing a Rough Country 9,500 or 12,000 lb winch with synthetic rope, install the provided square nuts that came in the hardware bag with the winch into the base of the winch. Have an assistant hold the winch up to the bumper while you install the provided 10mm button head bolts into the base of the winch. You will find that you have to access the lower holes through the front fairlead opening and the upper holes through the light bar opening. Make sure to route the winch rope through the hole in the front of the bumper. Once all are started, torque the lower bolts to 30 ft-lbs. **Photo 12**
18. Remove the upper button head bolts, and install the winch fairlead by dropping it behind the front skin. Install the remaining 10mm button head bolt (with the head facing the winch), washers, and nut. Torque all to 30 ft-lbs. **Photo 13**

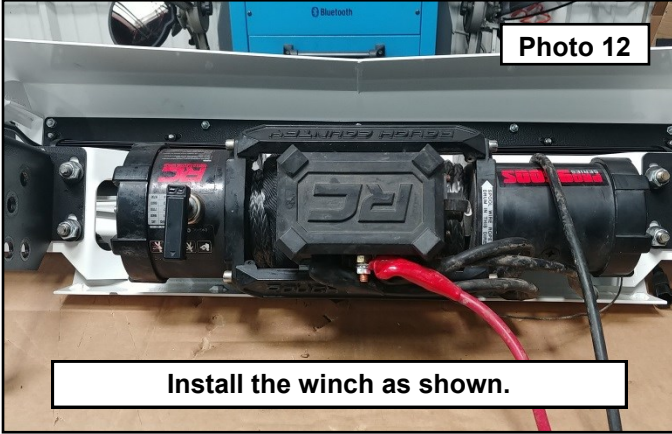


Photo 12

Install the winch as shown.

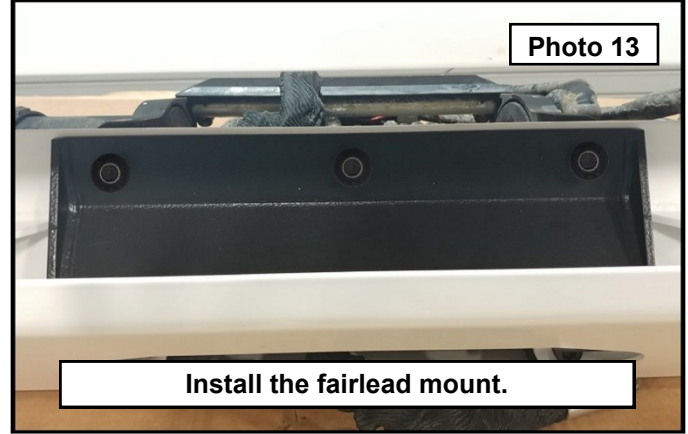


Photo 13

Install the fairlead mount.

19. Install the light trim rings to the mounts using the 1/4" Allen button head bolts, stainless washer (for the nut side) and nuts provided if you have purchased the lighting options. If you did not purchase the lighting options, then you will use the block off plates on the outer wings and center grill cover. You have a choice of black stainless or silver stainless button head bolts for this purpose. **Photo 14 /15**

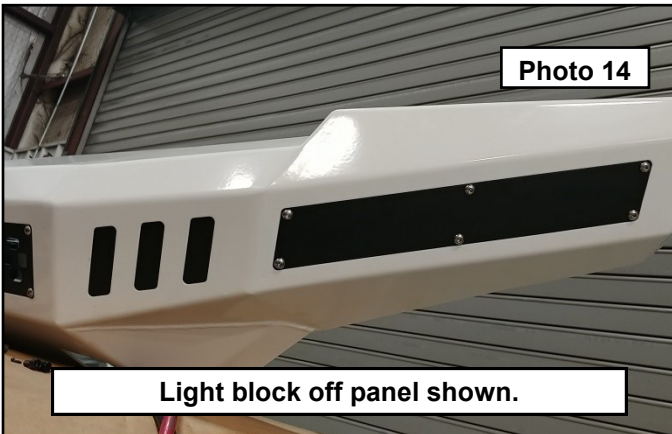


Photo 14

Light block off panel shown.

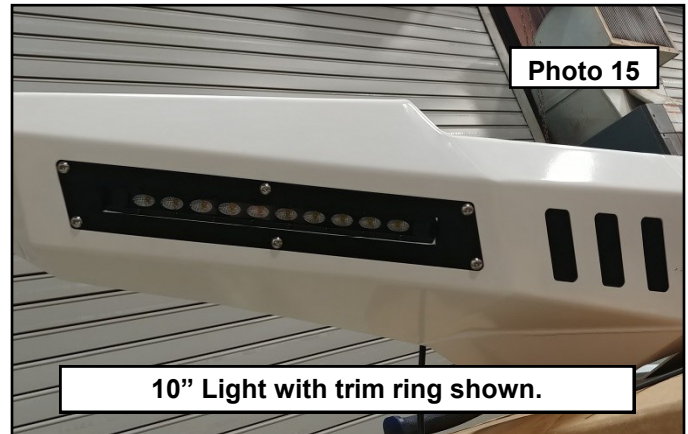


Photo 15

10" Light with trim ring shown.

20. If installing any of the lighting options, use the hardware provided in the light boxes. Snug the light hardware down enough to hold the lights tightly in place. Install any necessary washers or spacers needed to make the lights fit. This bumper is designed around the Rough Country 30" single row led light bar, and 10" slim line led light bars in black or chrome series. **Photo 16**
21. You can also use the center grill option with or without the light. **Photo 17**

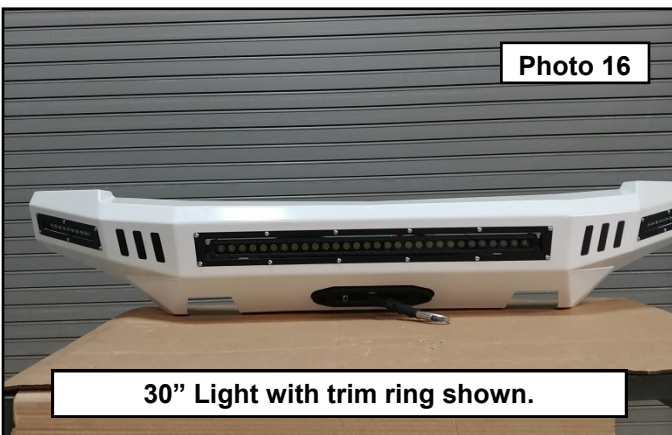


Photo 16

30" Light with trim ring shown.

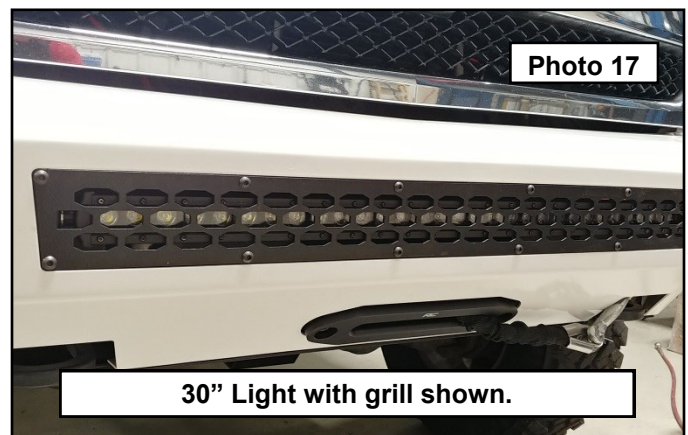
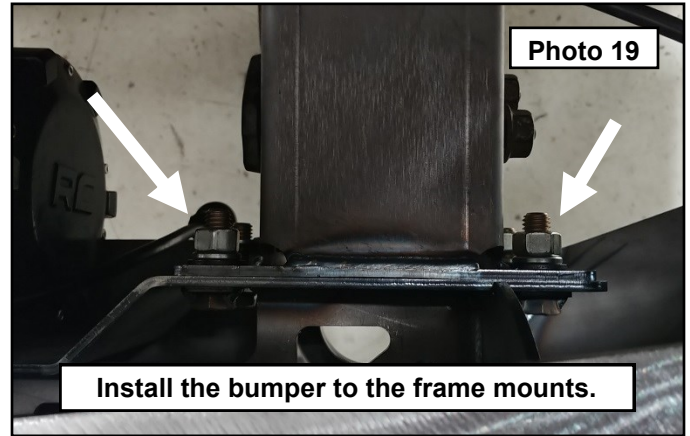
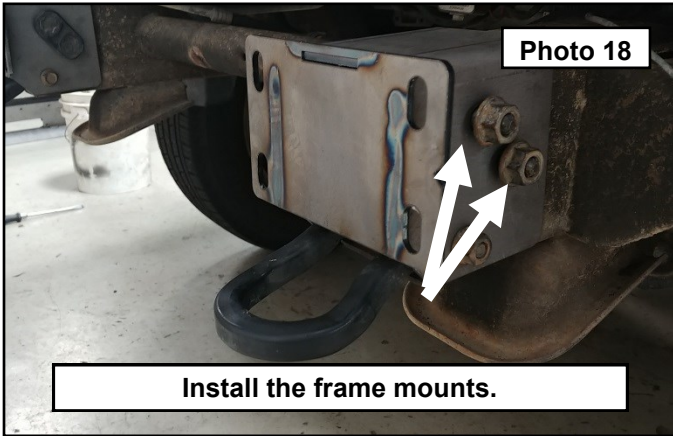


Photo 17

30" Light with grill shown.

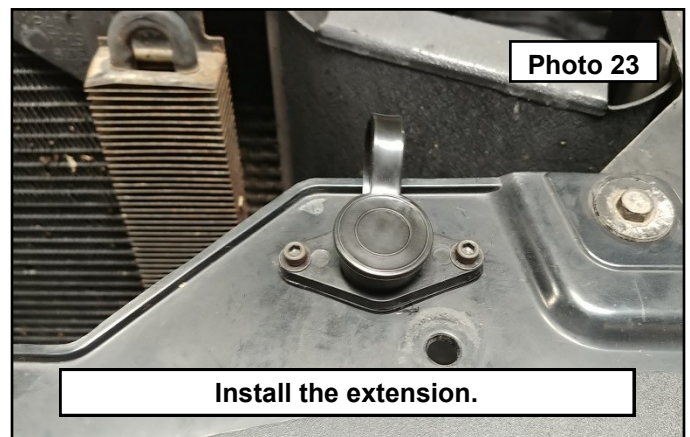
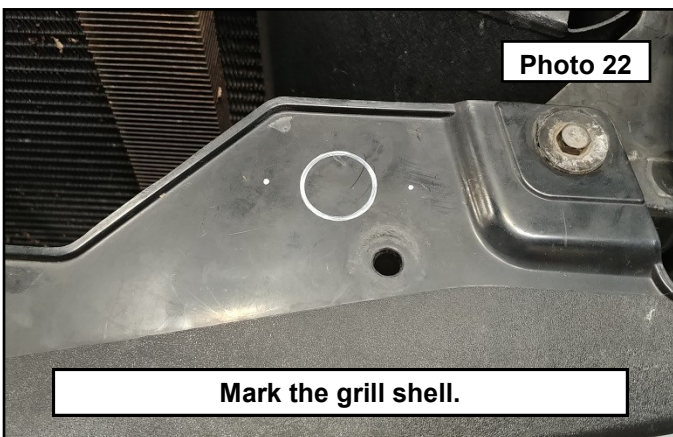
22. Install the frame mounts to the frame using the stock hardware. Do not tighten at this time. **Photo 18**
23. Install the bumper to the frame mounts using the provided bolt tabs and 12mm washers, lock washers, and nuts. Snug all the hardware up enough to hold the bumper in place. **Photo 19**



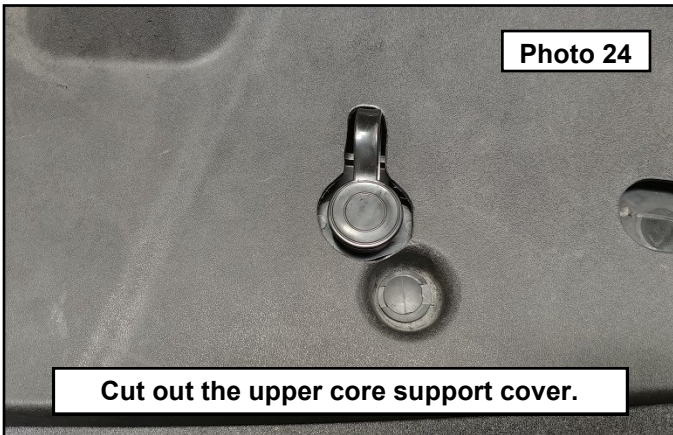
24. Have an assistant help with leveling and centering the bumper to the body. The bumper can be adjusted up/down, left/right via the 12mm hardware and tilted slightly front/back via the stock hardware. Once satisfied with the fit, torque the 12mm hardware to 95 ft-lbs, and the frame hardware to 120 ft-lbs. If you have the stock tow hooks, these can be reinstalled using the factory hardware, torque to 45 ft-lbs. If you are missing the factory tow hooks and are opting for the winch install, you will need to buy replacement hooks and hardware. **Photo 20**
25. Install the winch fairlead using the provided 12mm button head bolts from the bumper hardware bag. Torque to 30 ft-lbs. If you are not using a winch, install the winch block off grill using the 12mm button head bolts and 1/4" thick spacers between the grill and bumper. Line up until all the gaps are even and torque the bolts to 5 ft-lbs. **Photo 21**



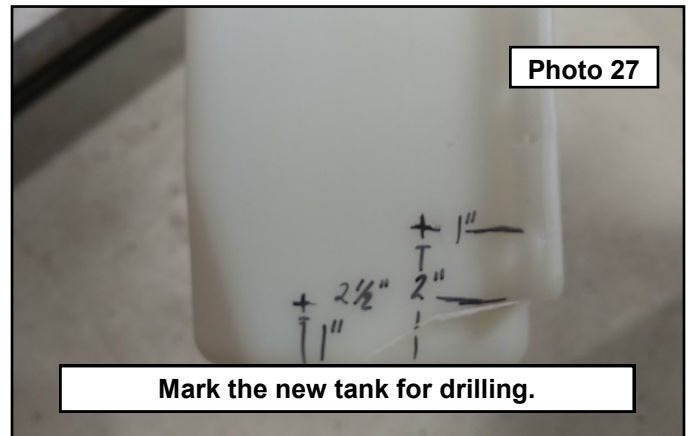
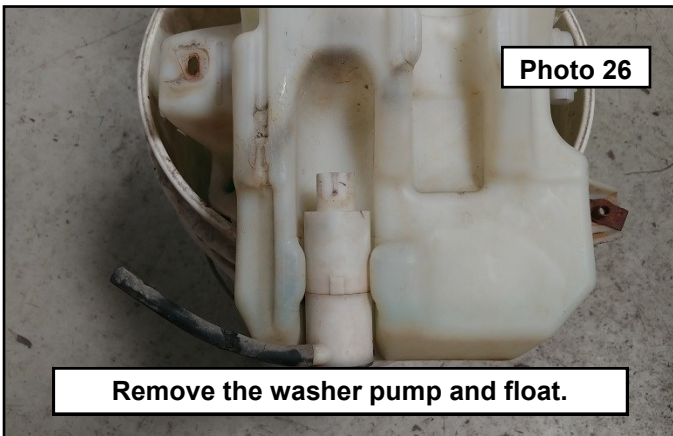
26. If you installed a winch and/or lights, run the electrical accordingly.
27. If you purchased the winch control extension cable, a good place to mount this is on the grill shell under the hood. Access this area by removing the core support cover plastic rivets and set aside.
28. Make a template using the extension base. **Photo 22**
29. Drill out the holes and bolt to the grill shell. Run the cable to the winch control box. **Photo 23**



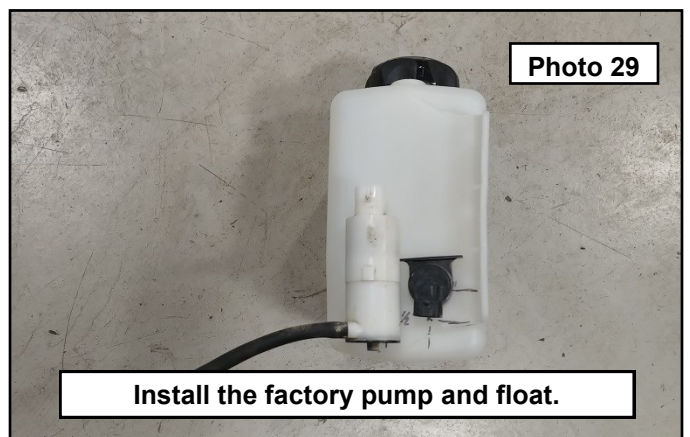
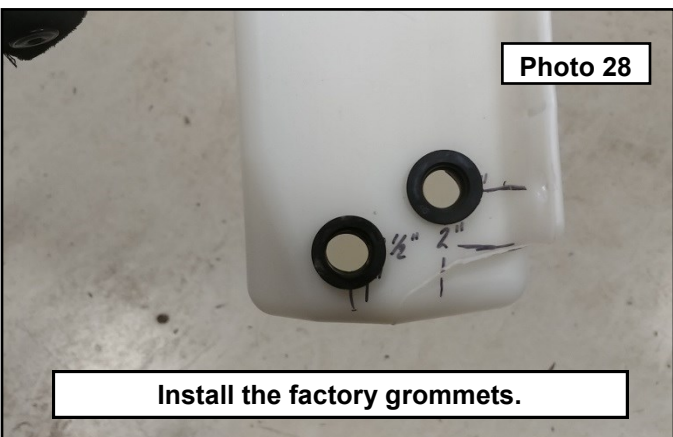
30. Place the core support cover back into place. Mark the location of the extension base. Use a rotary tool to make a hole in the cover for the extension to pass through. **Photo 24**
31. Mark the wheel liners even with the bumper. Use a razor knife taking extreme caution, trim the liners across as shown for a clean finished look. Tuck the liner behind the bumper end caps. **Photo 25**



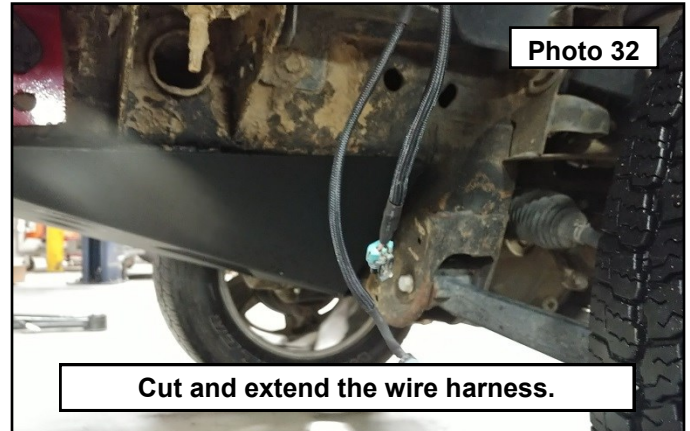
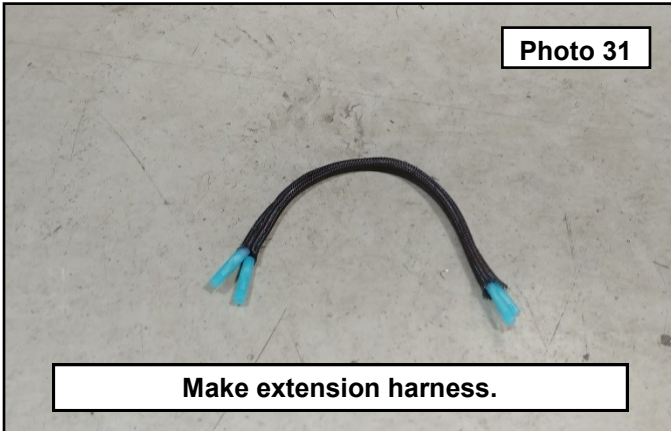
32. Remove the pump and float from the original washer tank by gently twisting and pulling out of the tank. These are only held in by the rubber gasket. **Photo 26**
33. Make a measurement on the side of the new tank 1" up from the bottom and 2.25" from the side. Drill out a 3/4" hole at this point for the factory pump. Make a measurement on the front of the tank for the float 2" up from the bottom and 1" from the side for the float. **Photo 27**



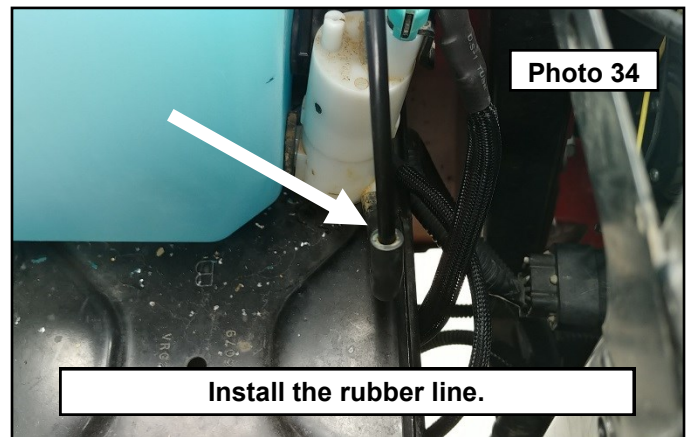
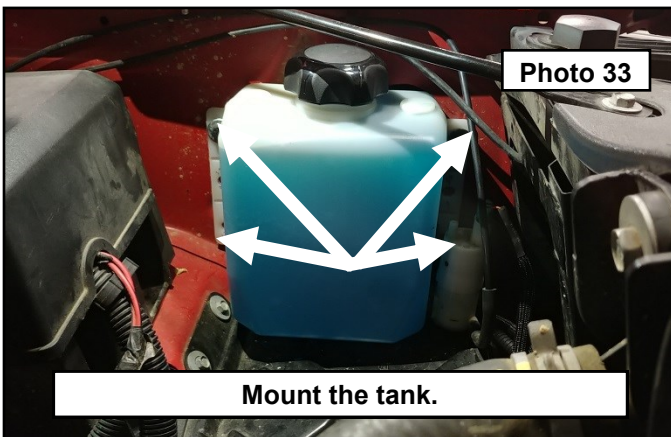
34. Install the factory rubber gaskets to the new tank. **Photo 28**
35. Install the pump and the float. Make sure they are both fully seated in the gaskets. Fill up the tank and check for leaks. **Photo 29**



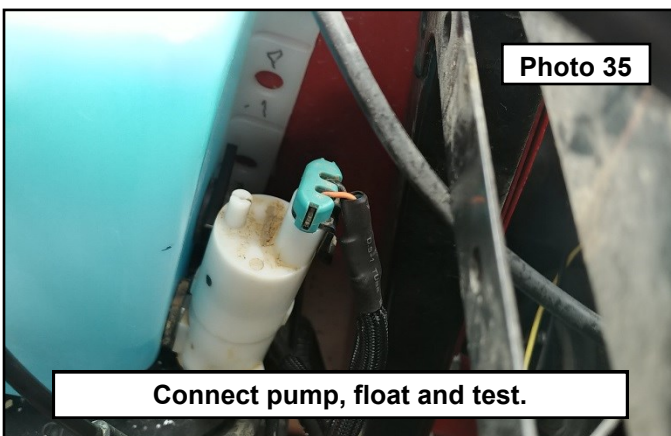
36. Cut the provided wire extension in half. Make the wire extensions; strip 1/4" of wire sleeve off, crimp on butt connectors to the ends of each wire. **Photo 31**
37. Make sure the battery is disconnected, cut the wire harness for the pump and the float. Strip the wires and install the extension harnesses making sure to match the original harness colors on both ends. Repeat this for the remaining three wires. Route the extended wire harness to the inside of the engine bay. **Photo 32**



38. Mark the tank mounts. Drill out with a 9/32" drill bit. Mount the tank into the vehicle fender well using 5/16" self tapping bolts. **Photo 33**
39. Route the washer tank hard line to the pump. Cut the line and install to the rubber line on the pump. **Photo 34**



40. Reconnect the pump, float, and battery. Test all electrical components for proper operation. **Photo 35**
41. For a finished look on the frame, the lower frame horns can be removed. This is also necessary if you purchased the optional lower skid plate designed for the bumper. Use a suitable cutting device, trim the frame horns off flush with the frame (plasma cutter shown.) Grind any burrs and paint using a quality rust preventative paint or under liner. **Photo 36**



42. If you have ordered the optional skid plate, install using the provided hardware and instructions from the skid plate box.



Bumper shown as color matched by customer.

By purchasing any item sold by Rough Country, LLC, the buyer expressly warrants that he/she is in compliance with all applicable , State, and Local laws and regulations regarding the purchase, ownership, and use of the item. It shall be the buyers responsibility to comply with all Federal, State and Local laws governing the sales of any items listed, illustrated or sold. The buyer expressly agrees to indemnify and hold harmless Rough Country, LLC for all claims resulting directly or indirectly from the purchase, ownership, or use of the items.