

ROUGH COUNTRY

SUSPENSION SYSTEMS®

Ram 13-18 1500 Front Bumper

Thank you for choosing Rough Country for all your vehicle needs.

Please read instructions before beginning installation. Check the kit hardware against the kit contents shown below. Be sure you have all needed parts and know where they go.

If question exist, please call us @1-800-222-7023. We will be happy to answer any questions concerning the design, function, and correct use of our products.

▲ NOTICE Rough Country LED lights are for off-road use only.

HARDWARE INCLUDED:

8-12mm Lock Washer
 8-12mm x 35mm Bolts
 8-12mm x 35mm Nuts
 16-12mm Flat Washers
 12-10mm Flat Washers
 6-10mm x 35mm Bolts
 6-10mm Nuts
 6-10mm Lock Washers
 2-8mm x 25mm Bolts
 2-8mm x 16mm Bolts
 2-8mm Nuts
 4-8mm Lock Washers
 6-8mm Flat Washers
 2-6mm Lock Nuts
 6-6mm Button Head Screws
 4-6mm x 12mm OD Flat Washers
 4-6mm x 18mm Flat Washers
 4-6mm Lock Washers
 12-4mm Button Head Screws

TOOLS NEEDED:

8mm Socket / Wrench
 10mm Socket / Wrench
 16mm Socket / Wrench
 17mm Socket / Wrench
 18mm Socket / Wrench

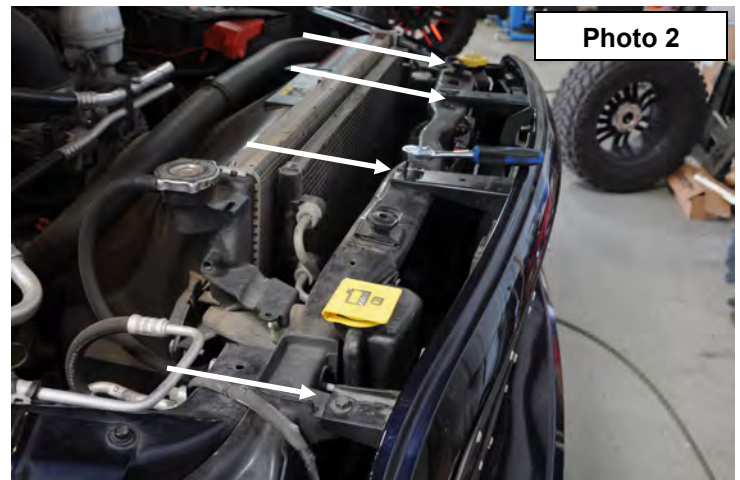
KIT CONTENTS:

1-Front Bumper
 4- 2" LED Cubes
 1- Dual Row 20" LED
 2- 2 Into 1 Wiring Harnesses
 3 - Proximity Sensor Wiring Extensions

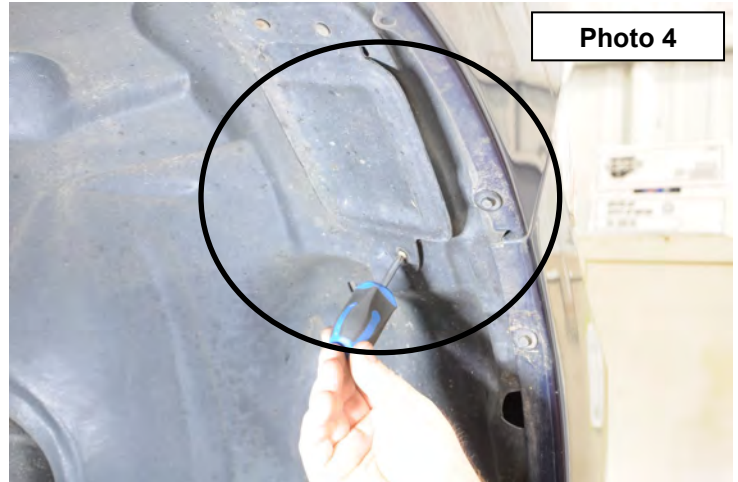


INSTALLATION INSTRUCTIONS

1. Place the vehicle in park.
2. Remove the push pins from the radiator cover and remove cover. **See Photo 1.**
3. Remove the four bolts holding grill in using a 10mm socket. **See Photo 2.** Then unclip from the lower mounting points.



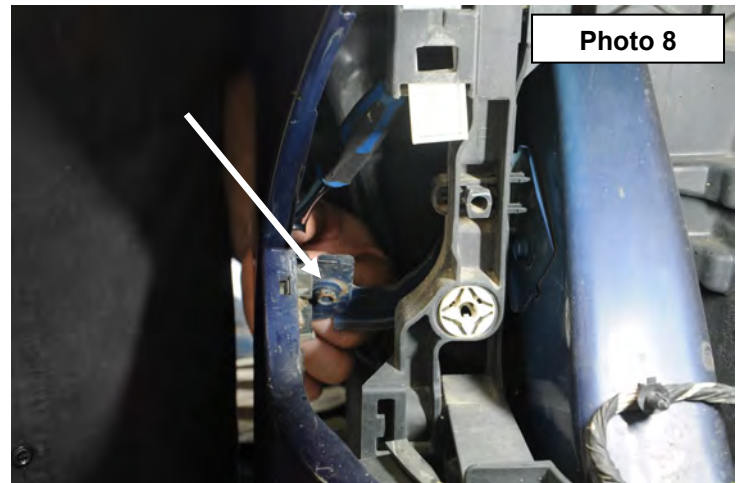
4. Remove the two bolts in the headlight using a 10mm socket. **See Photo 3.**
5. Remove the screw from the flap on the inner fender well to access the headlight. **See Photo 4.**



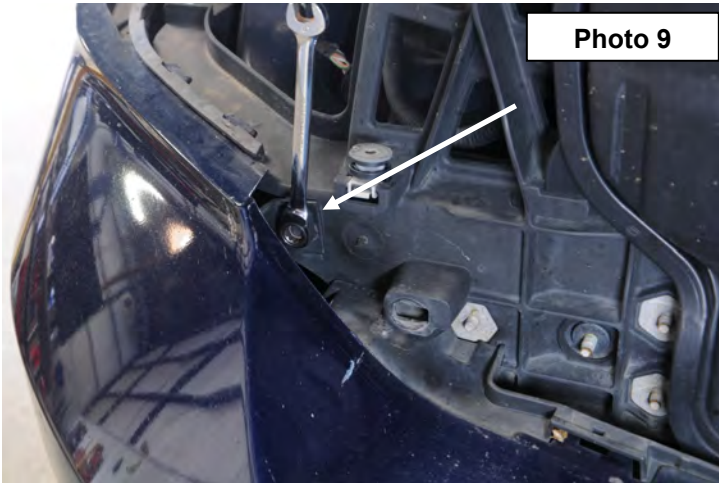
6. Push up on the plastic white clip shown in **Photo 5** to release headlight.
7. Unplug headlight as shown in **Photo 6.**



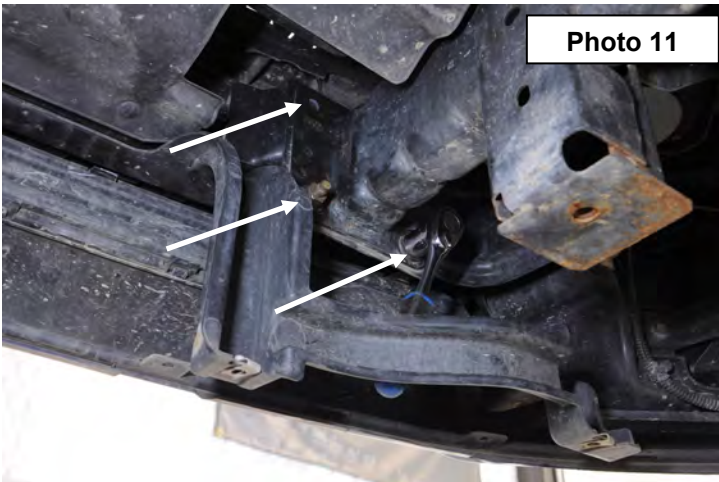
8. Remove the bolts holding inner fender well to fender using a 8mm socket. Pull inner fender out to gain access to bolt holding bumper on. **See Photo 7.**
9. Using a 10mm remove the outer bolts holding bumper to fender. **See Photo 8.**



10. Remove the inner bolts on the bumper using a 10mm wrench. **See Photo 9.**
11. Unplug fog lights on driver side as shown in **Photo 10** and unplug proximity sensors if factory equipped. They will be installed in the new bumper if present in the factory bumper.



12. Using a 18mm socket remove the six nuts holding bumper to frame. **See Photo 11.**
13. Unclip the painted bumper from bumper main housing and remove plastic bumper shell from truck. **See Photo 12.**



14. Using a 10mm socket remove the three bolts securing the plastic molding from body of truck that is mounted under headlight. **See Photo 13.** Also remove the black plastic bumper core.
15. Remove plastic bezel from radiator support that is under grill using a 10mm socket. **See Photo 14.**



16. Install the supplied brackets with the 8mm x 16mm bolts, lock washers, flat washers and nuts. Install center LED light bar into new bumper with the hardware from the light kit. **See Photo 15.**
17. Install the outer 2" lights with the hardware supplied with the light kit. **NOTE: It may be necessary to remove the mesh plate to route the light wires. See Photo 16.**

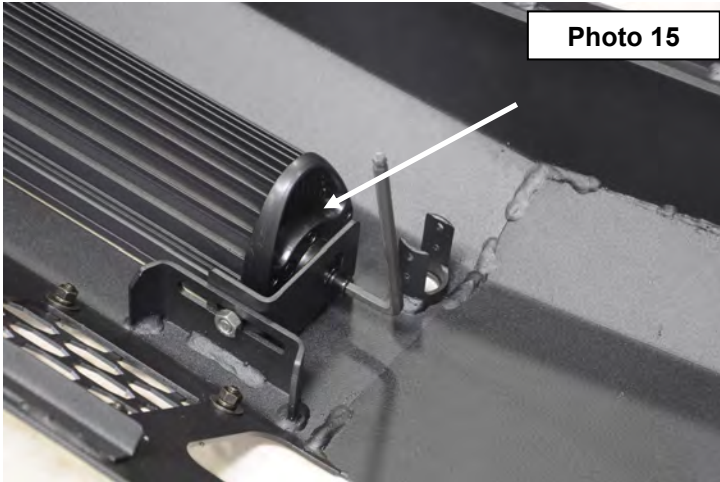


Photo 15

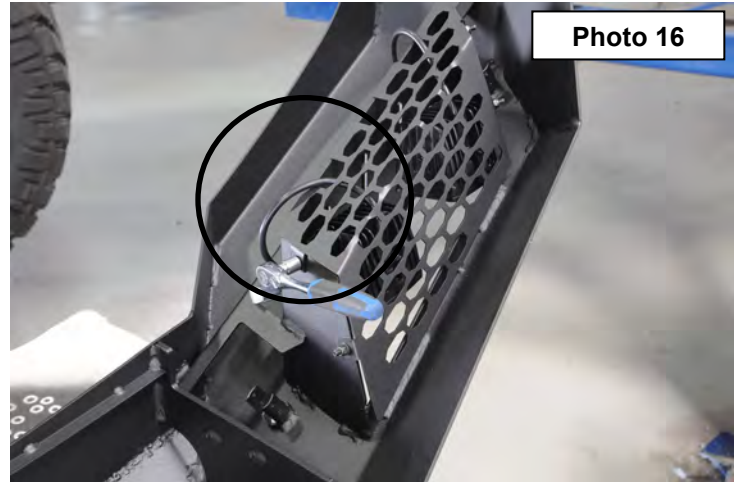


Photo 16

18. If not factory equipped with proximity sensors, install the supplied rubber plugs into holes and secure with the plastic cap to hold the rubber plug in the bumper. **See Photo 17.**
19. If equipped, install the factory proximity sensor in the center holes in the bumper and secure with the supplied 4mm button head bolts.
20. For the side sensor mounts, the sensor might need to have the plastic locator tabs removed to allow to ease installation of sensor plug. This can be done using file or sander. **See Photo 18.**

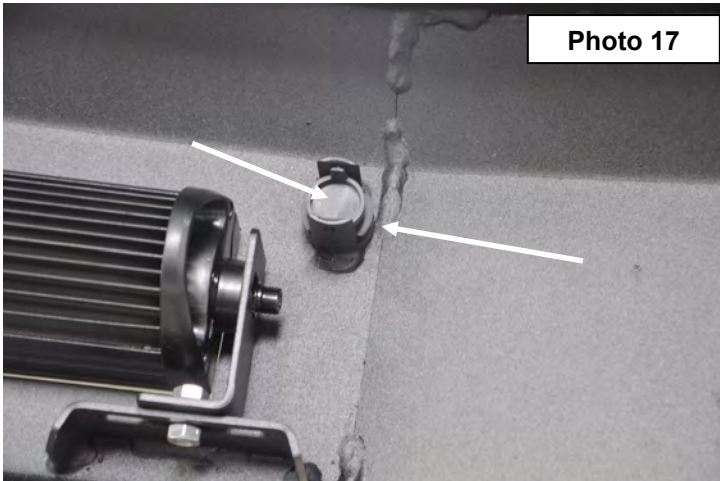


Photo 17

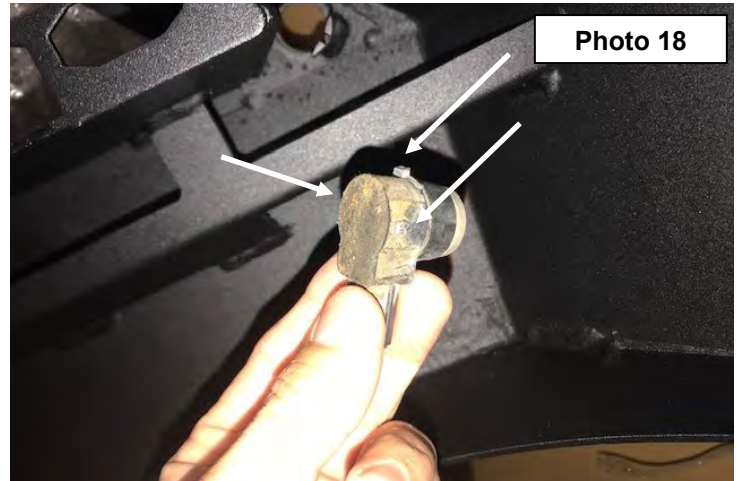


Photo 18

21. After removing the tabs, install in sensor mount and rotate to allow the factory plug to be installed. **See Photo 19.**
22. Locate and install the 3 sensor wiring extensions harnesses on the factory harness.
23. Install new bumper frame/ d-ring brackets with supplied 12mmx 35mm bolts, washers and nuts as shown. **See Photo 20.**

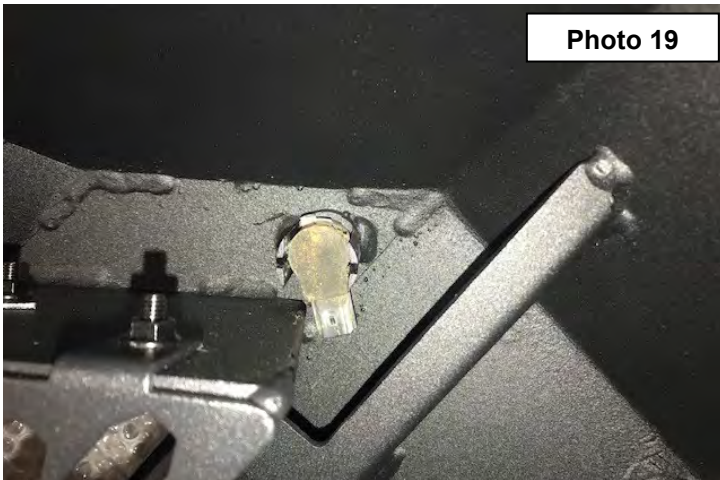


Photo 19

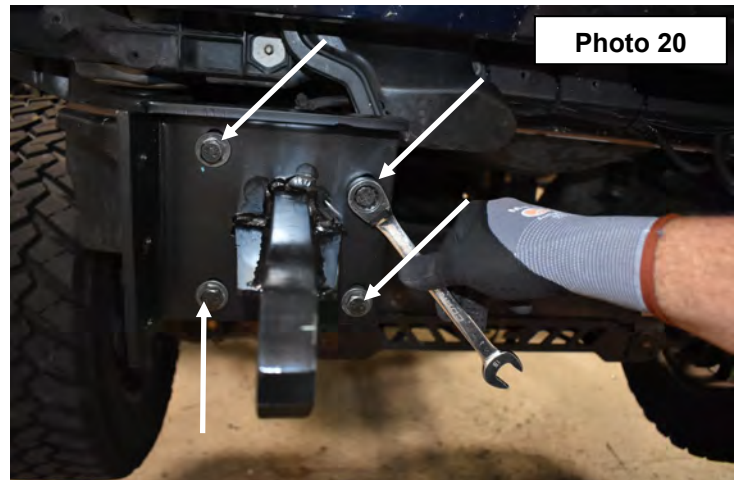
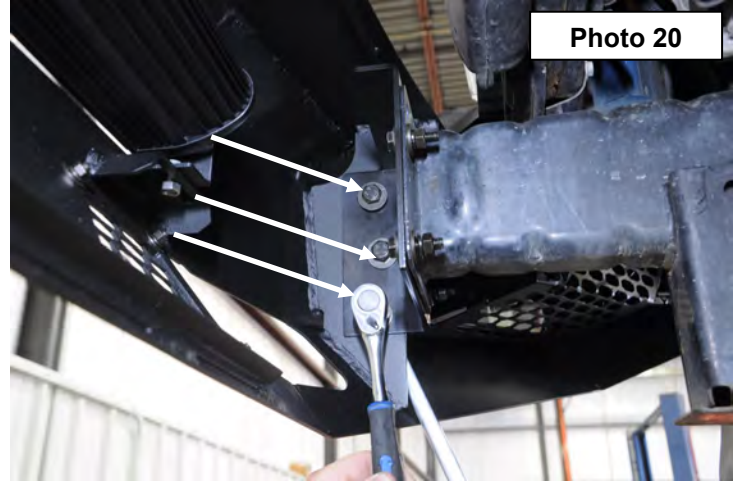


Photo 20

24. Install bumper trim extension onto side of bumper using the supplied 6mm Allen head bolts. **See Photo 19.** Tighten using a 4mm Allen wrench.
25. Install new bumper using the supplied 10mm x 35mm bolts. **See Photo 20.** Do not tighten at this time.



26. Reinstall headlight making sure the factory clip is engaged and secure with factory hardware. Tighten using a 10mm socket.
27. This step is best done with two persons. Take care not to allow the bumper to come in contact with the fenders. Adjust bumper to desired position, hold, and tighten all bolts using a 16mm and 18mm socket and wrench.
28. Wire up the lights as per the instructions included with those kits.

By purchasing any item sold by Rough Country, LLC, the buyer expressly warrants that he/she is in compliance with all applicable Federal, State, and Local laws and regulations regarding the purchase, ownership, and use of the item. It shall be the buyer's responsibility to comply with all Federal, State and Local laws governing the sales of any items listed, illustrated or sold. The buyer expressly agrees to indemnify and hold harmless Rough Country, LLC for all claims resulting directly or indirectly from the purchase, ownership, or use of the items.

