

ROUGH COUNTRY

SUSPENSION SYSTEMS®

FORD 2009-14 F-150 Rear Bumper

Thank you for choosing Rough Country for all your vehicle needs.

Please read instructions before beginning installation. Check the kit hardware against the kit contents shown below. Be sure you have all needed parts and know where they go.

If question exist, please call us @1-800-222-7023. We will be happy to answer any questions concerning this product.

Check all fasteners for proper torque. Check to ensure for adequate clearance between all components.

Periodically check all hardware for tightness.

KIT CONTENTS:
Rear Bumper x1
2" LED Lighting Kit x2

HARDWARE INCLUDED:
License Plate LED Lights x 2
4mm x10mm Button Head Bolts x8
Sensor Hole Plugs x 4

TOOLS NEEDED:
4mm Allen Wrench
6mm Allen Wrench
2.5mm Allen Wench
10mm Wrench or Socket
21mm Wrench or Socket
Small Pry Tool



Torque Specs:

Size	Grade 5	Grade 8	Size	Class 8.8	Class 10.9
5/16"	15 ft/lbs	20ft/lbs	6MM	5ft/lbs	9ft/lbs
3/8"	30 ft/lbs	35ft/lbs	8MM	18ft/lbs	23ft/lbs
7/16"	45 ft/lbs	60ft/lbs	10MM	32ft/lbs	45ft/lbs
1/2"	65 ft/lbs	90ft/lbs	12MM	55ft/lbs	75ft/lbs
9/16"	95 ft/lbs	130ft/lbs	14MM	85ft/lbs	120ft/lbs
5/8"	135ft/lbs	175ft/lbs	16MM	130ft/lbs	165ft/lbs
3/4"	185ft/lbs	280ft/lbs	18MM	170ft/lbs	240ft/lbs



INSTALLATION INSTRUCTIONS

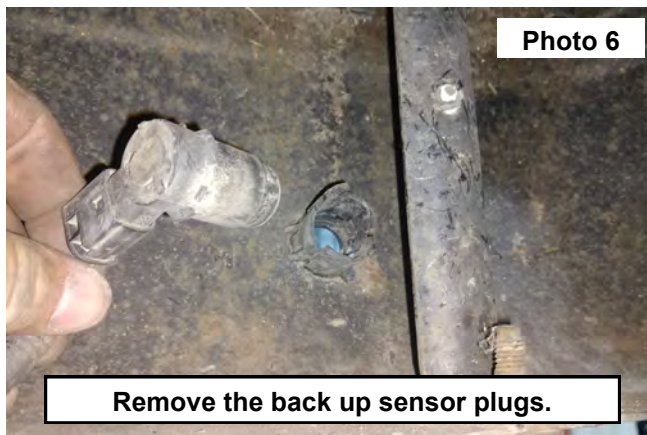
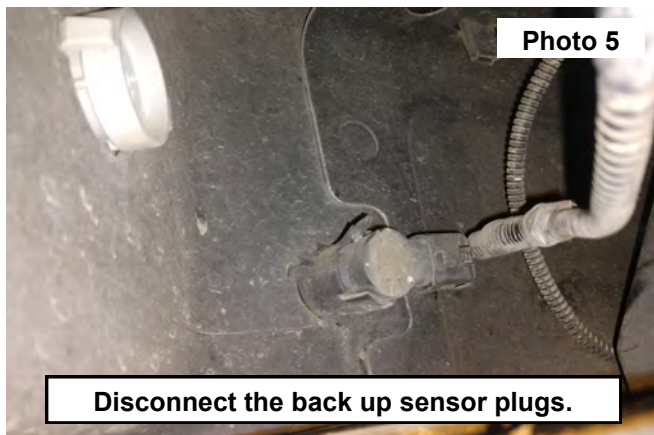
1. Remove the fasteners securing the license plate and remove from the rear bumper. **See Photo 1.**
2. Disconnect the trailer light harness from the hitch mount plug if equipped. **See Photo 2.**



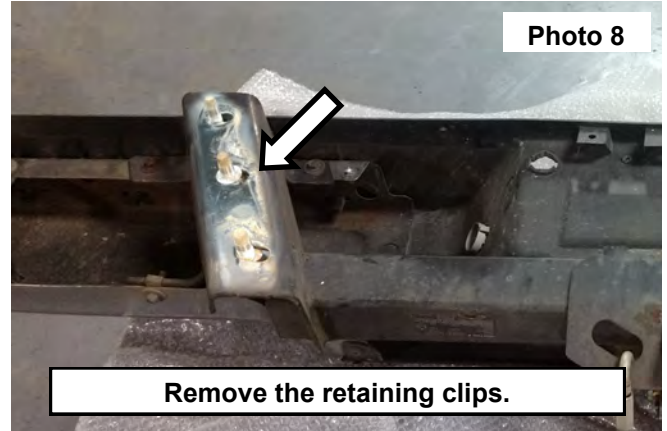
3. Remove the license plate light lighting from the bumper. **See Photo 3.**
4. Use a pry tool to remove all sensor wiring clips from the bumper structure. **See Photo 4.**



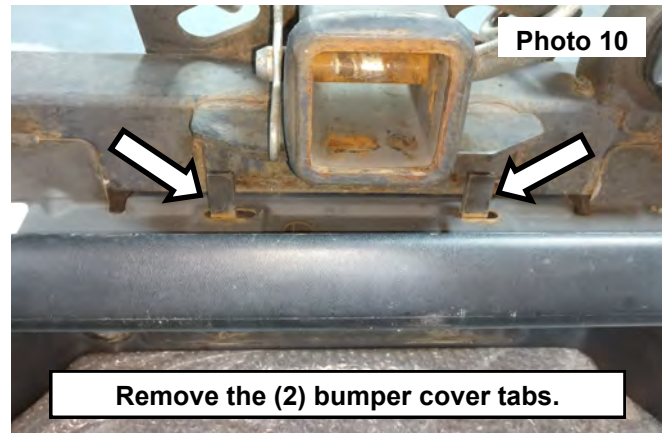
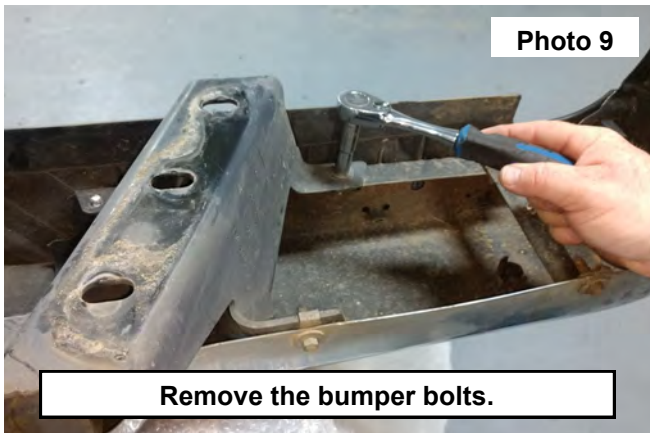
5. Disconnect the back up sensor plugs. **See Photo 5.**
6. Remove the back up sensor plugs from the bumper and set aside for reuse. **See Photo 6.**
7. Remove the wiring harness from the bumper.



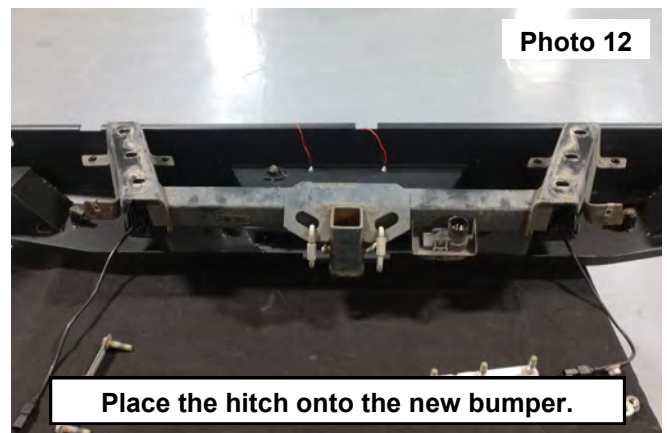
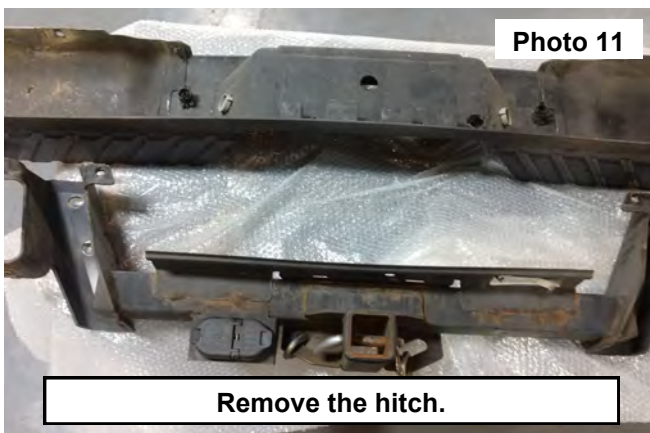
8. Support the bumper. Do not attempt to remove the bumper with out supporting the bumper.
9. Using a 21mm socket remove the nuts from the (3) bolts on each side of the bumper. Then remove the bumper from the vehicle. **See Photo 7.** Retain the factory flag nuts for reuse.
10. Remove the (3) retaining clips from the flag bolts on each side of the bumper . Retain the retaining clips for later use. **See Photo 8.**



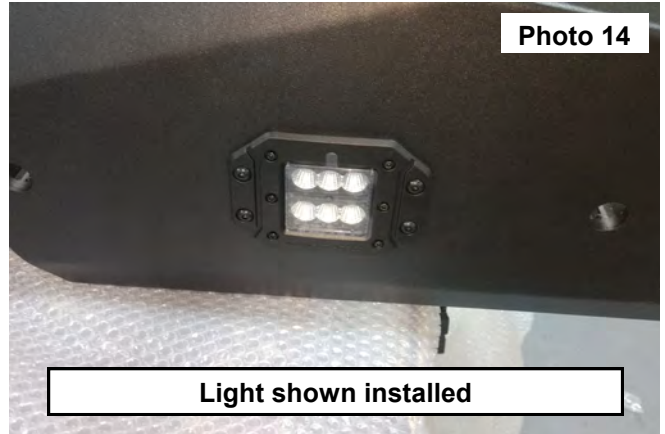
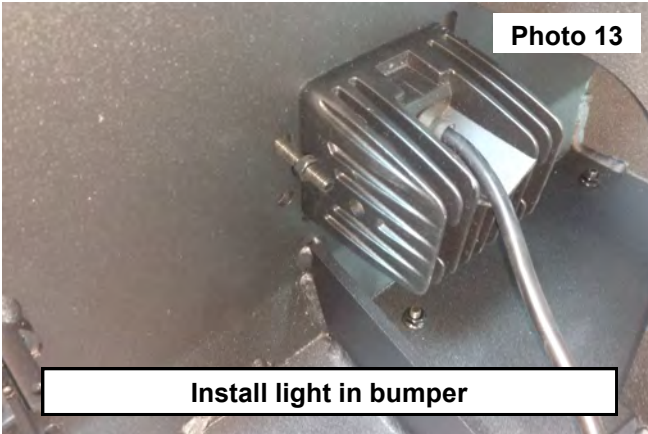
11. Use a 10mm socket to remove the (3) bumper bolts on each side of the hitch. **See Photo 9.**
12. Remove the (2) bumper cover tabs from the hitch. **See Photo 10.**



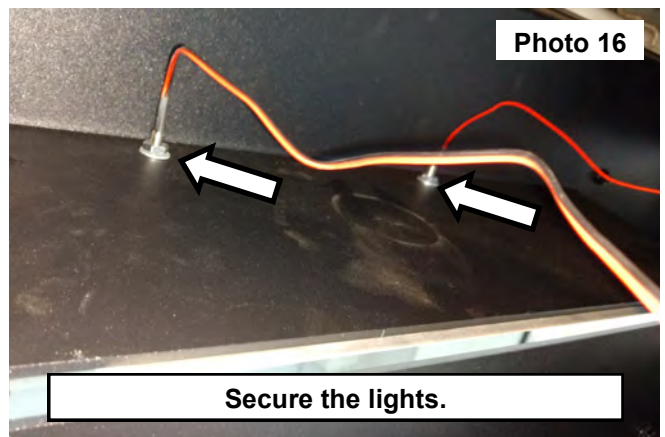
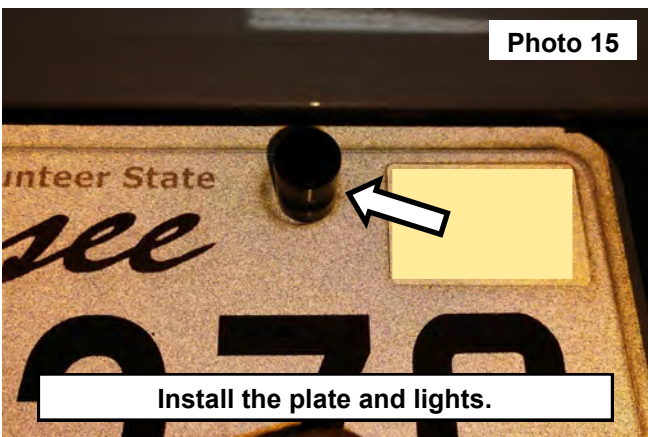
13. Remove the hitch from the bumper. **See Photo 11.**
14. Place the hitch onto the new bumper. **See Photo 12.**



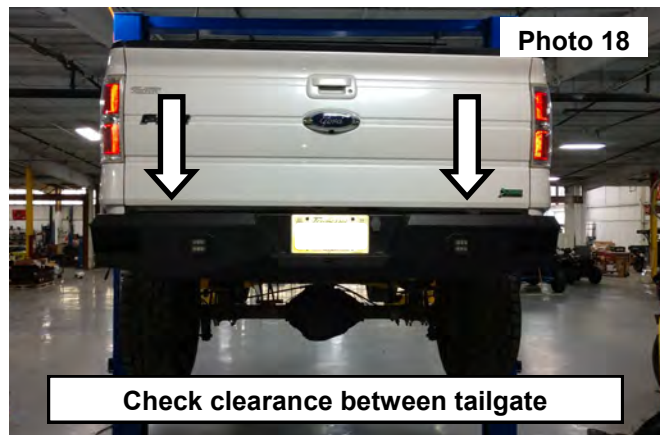
15. Install the LED lights using the supplied hardware. Using the corresponding instruction sheet supplied in the LED light kit. **See Photos 13 and 14.**



16. Place the license plate onto the bumper with the license plate light wires through the mounting holes. **See Photo 15.**
17. Secure the license plate and lights using the supplied washer and nut. **See Photo 16.**



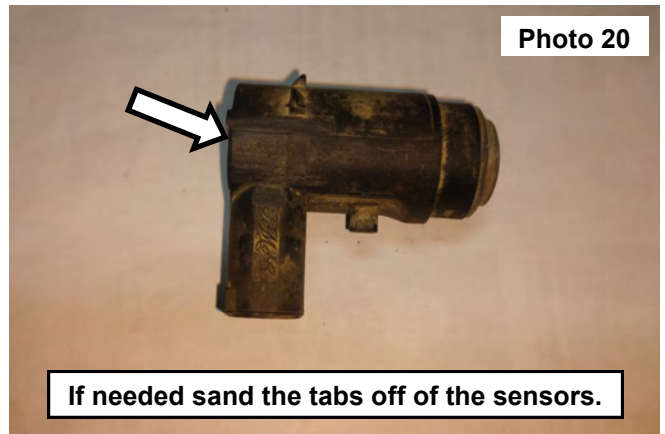
18. Install the factory flag bolts into the bumper, press the stock retaining clip onto the flag bolt. **See Photo 17.**
19. Place the bumper onto the vehicle using the flag bolts, secure by using the factory nuts.
20. Level the bumper along the bottom of the tail gate. Slightly tighten to hold the bumper in place and open the tailgate to make sure there is clearance between the bumper and the tailgate. **See Photo 18.**



21. If there is clearance between the bumper and tailgate and bumper is positioned correctly, tighten the (3) factory nuts on each side of bumper using a 21mm socket. **See Photo 19.**
22. Locate the (4) back up sensors. Test fit the sensors in the mounts in bumper and if needed sand the (2) tabs off of each side of the sensor to allow the sensor to install into the mount on the bumper. **See Photo 20.**

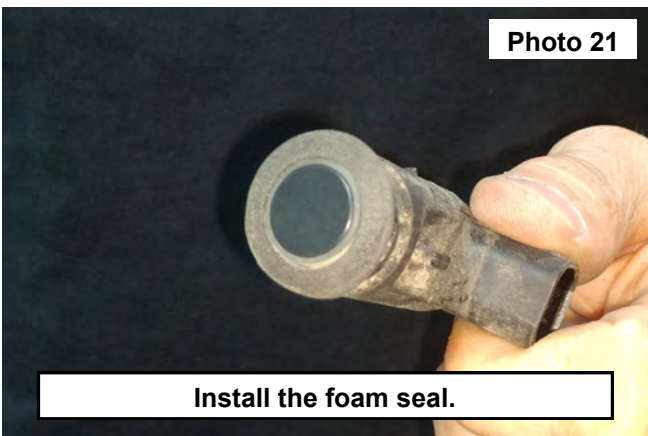


Tighten the bumper to the vehicle.

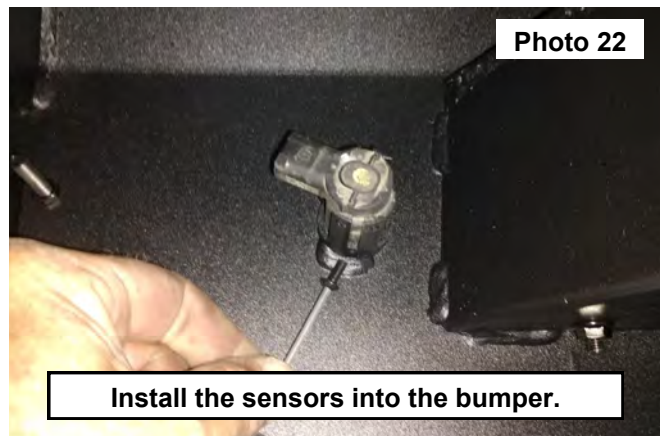


If needed sand the tabs off of the sensors.

23. Install the foam seal onto the (4) the sensors. **See Photo 21.**
24. Install the (4) sensors into the bumper mount using the supplied hardware. **See Photo 22.**

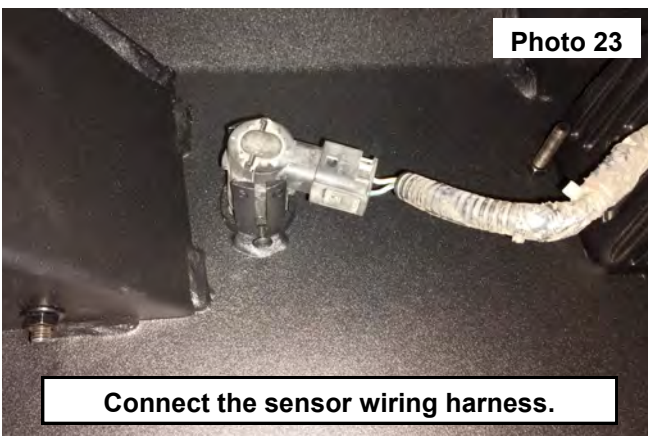


Install the foam seal.



Install the sensors into the bumper.

25. Install and connect the sensors and the trailer plug wiring harness. **See Photos 23 and 24.**
26. Splice factory wires and connect the license plate illumination light wires to the OE wiring harness.
27. Install and connect the LED light wiring harness to the vehicles power supply. Use the corresponding instruction sheet supplied in the LED light kit.



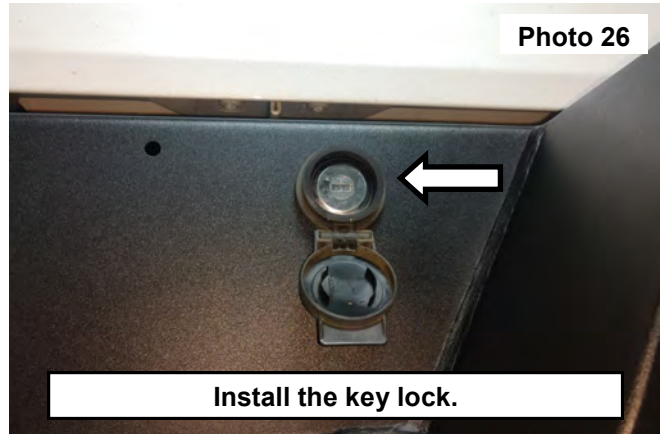
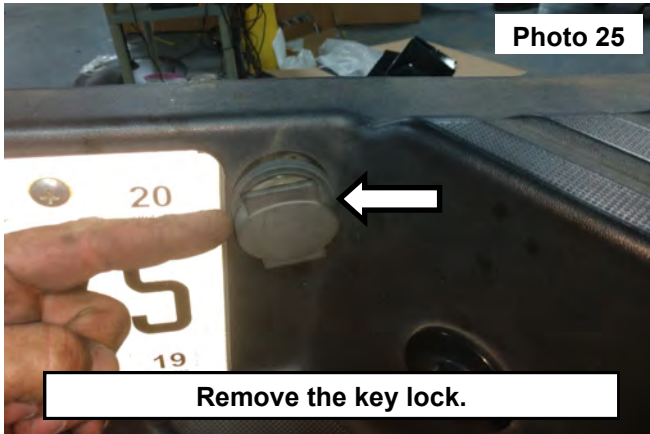
Connect the sensor wiring harness.



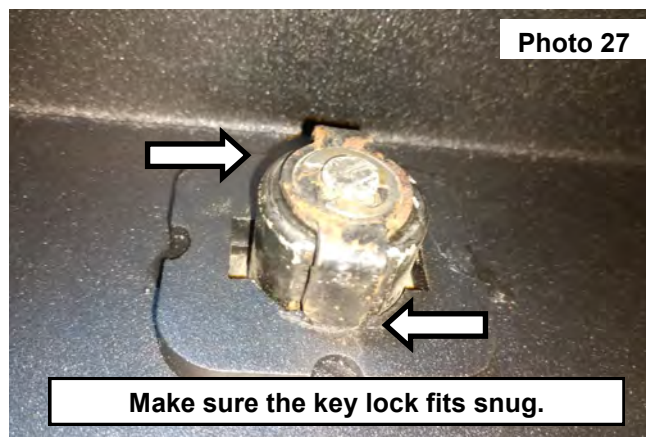
Connect the trailer light plug.

28. Use the ignition key to remove the key lock In the OE bumper. **See Photo 25.**

29. Install the key lock into the new rear bumper. Then remove the key. **See Photo 26.**



30. Make sure the key lock sits snug onto the backing plate of the bumper. **See Photo 27.**



By purchasing any item sold by Rough Country, LLC, the buyer expressly warrants that he/she is in compliance with all applicable, State, and Local laws and regulations regarding the purchase, ownership, and use of the item. It shall be the buyers responsibility to comply with all Federal, State and Local laws governing the sales of any items listed, illustrated or sold. The buyer expressly agrees to indemnify and hold harmless Rough Country, LLC for all claims resulting directly or indirectly from the purchase, ownership, or use of the items.

