

ROUGH COUNTRY

SUSPENSION SYSTEMS®

JEEP 2020 JT / 2018-UP JL / JK 07-18 Wrangler Front Winch Bumper

Thank you for choosing Rough Country for all your vehicle needs.

Please read instructions before beginning installation. Check the kit hardware against the kit contents shown below. Be sure you have all needed parts and know where they go.

If question exist, please call us @1-800-222-7023. We will be happy to answer any questions concerning this product.

Check all fasteners for proper torque. Check to ensure for adequate clearance between all components.

Periodically check all hardware for tightness.

KIT CONTENTS:

20" Single Row LED Light Kit
2" Led Pod Light Kit
Front Bumper
Skid Plate
JK Skid Plate Mounting Bracket x 2
Drivers side Skid Plate Bracket (JL)
Pass Side Skid Plate Bracket (JL)

TOOLS NEEDED:

5mm Allen Wrench
Phillips Screw Driver
10mm Wrench or Socket
11mm Wrench or Socket
13mm Wrench
16mm Wrench or Socket
18mm Wrench or Socket

HARDWARE INCLUDED:

12mm x 40mm Flag bolt x 4
12mm Plastic Retainer x 8
12mm Lock Washer x 8
12mm Large OD Flat Washer x 8
12mm Hex Nut x 8
8mm Nut Plate x 2
8mm x 35mm T-Bolt x 2
8mm x 25mm T-Bolt x 2
8mm x 16mm Hex Bolt x 2
8mm x 30mm Hex Head Bolt x 4
8mm Lock Washer x 8
8mm Flat Washer x 10
8mm Hex Nut x 4
8mm Button Head Bolt x 4
8mm Plastic Retainer x 2
12mm Flat Washer x 2
6mm Flat Washer x 2
6mm Hex Nut x 2
6mm Button Head Bolt x 2



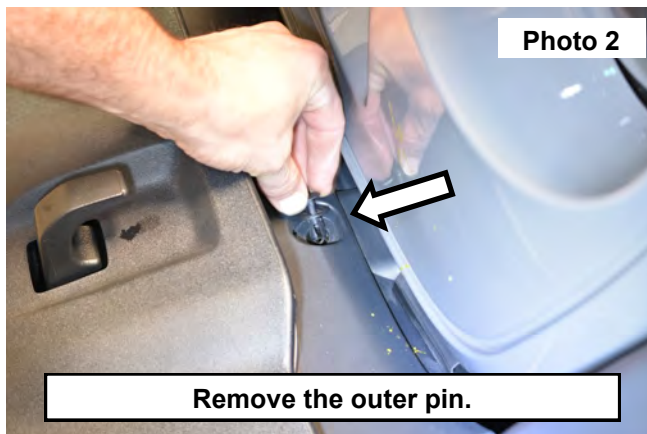
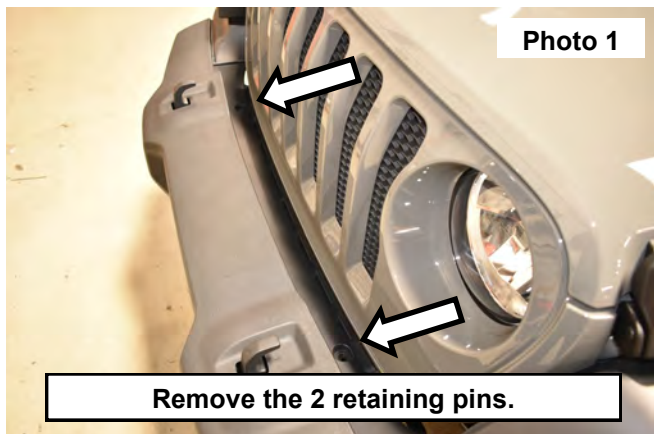
Torque Specs:

Size	Grade 5	Grade 8	Size	Class 8.8	Class 10.9
5/16"	15 ft/lbs	20ft/lbs	6MM	5ft/lbs	9ft/lbs
3/8"	30 ft/lbs	35ft/lbs	8MM	18ft/lbs	23ft/lbs
7/16"	45 ft/lbs	60ft/lbs	10MM	32ft/lbs	45ft/lbs
1/2"	65 ft/lbs	90ft/lbs	12MM	55ft/lbs	75ft/lbs
9/16"	95 ft/lbs	130ft/lbs	14MM	85ft/lbs	120ft/lbs
5/8"	135ft/lbs	175ft/lbs	16MM	130ft/lbs	165ft/lbs
3/4"	185ft/lbs	280ft/lbs	18MM	170ft/lbs	240ft/lbs

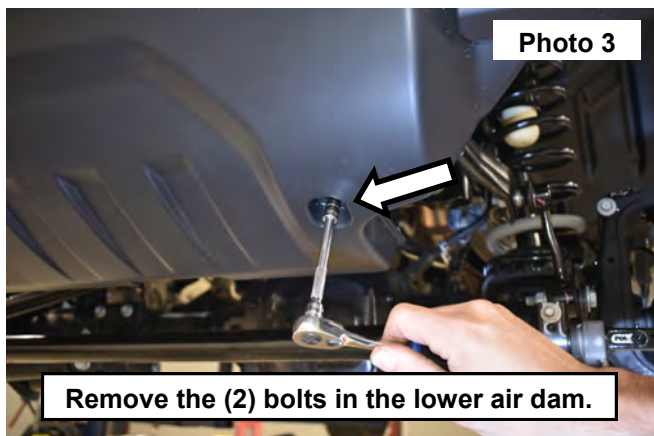


INSTALLATION INSTRUCTIONS

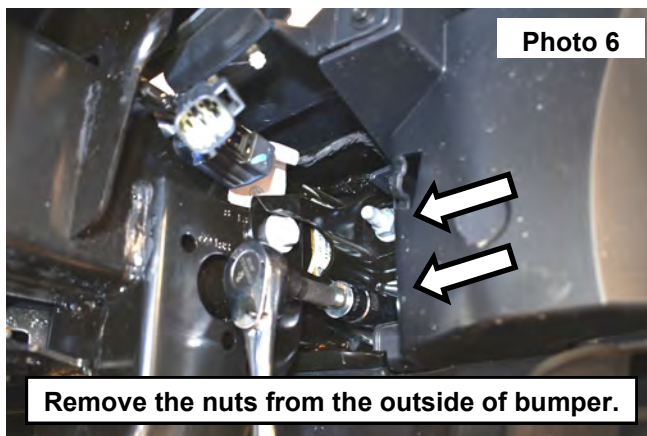
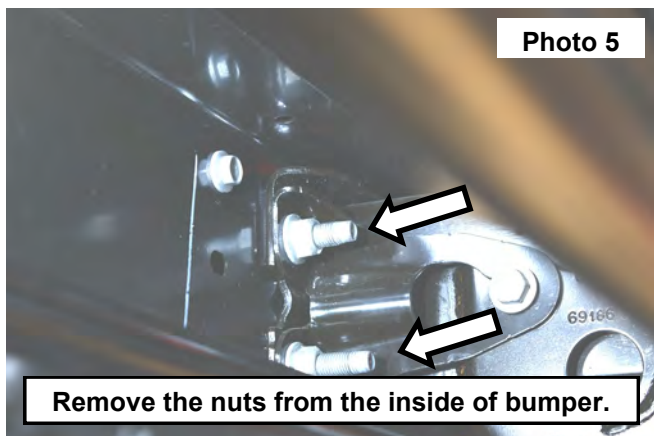
1. Remove the (2) retaining pins in the top of the bumper cover using a Phillips screw driver to remove the center threaded pin. Then remove the outer pin from the bumper cover. **See Photos 1 and 2.**



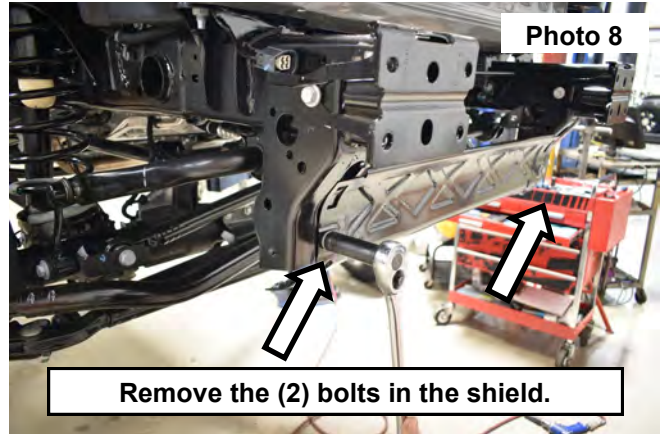
2. Using a 10mm socket remove the (2) bolts in the lower air dam. **See Photo 3.**
3. Disconnect the fog light wiring harness from the frame mount. **See Photo 4.**



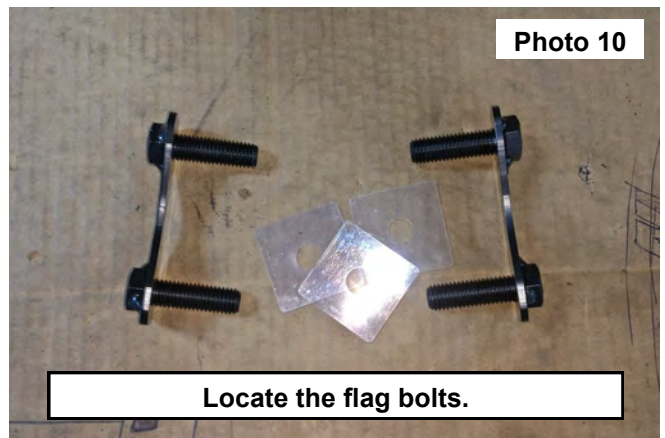
4. Support the bumper, do not get under an unsupported bumper.
5. Remove the (2) nuts from the frame mount on each side of the inside of the bumper using an 18mm socket. **See Photo 5.**
6. Remove the (2) nuts from the frame mount on each side of the outside of the bumper. **See Photo 6.**



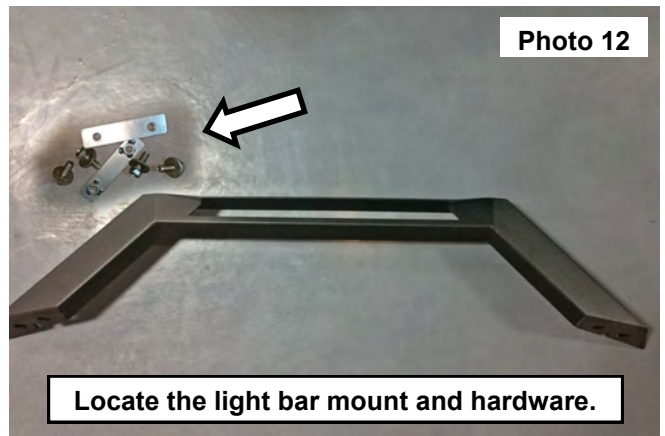
7. Remove the bumper from the vehicle. **See Photo 7.**
8. Remove the (2) bolts from the center shield using a 16mm socket. **See Photo 8.**



9. Remove the center shield from the vehicle. **See Photo 9.**
10. Locate the (2) flag bolts and (4) plastic retainers. **See Photo 10.**



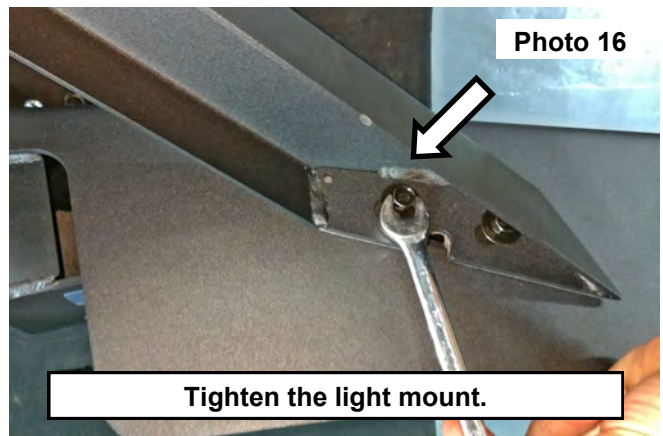
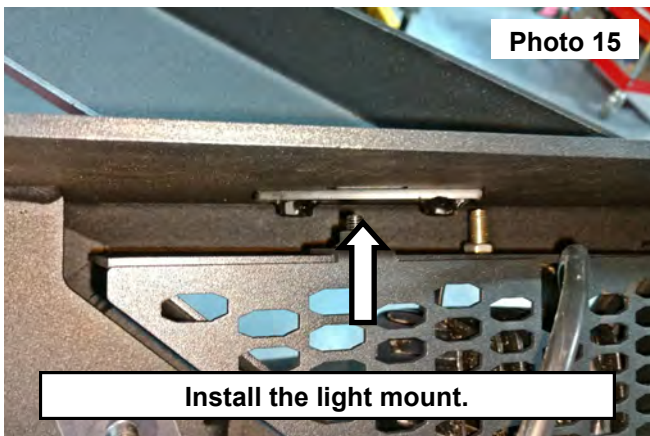
11. Install the flag bolts and retainers on each side of the bumper. **See Photo 11.**
12. Locate the light bar mount, (2) flag nuts and (4) 8mm Hex Head Bolts. **See Photo 12.**



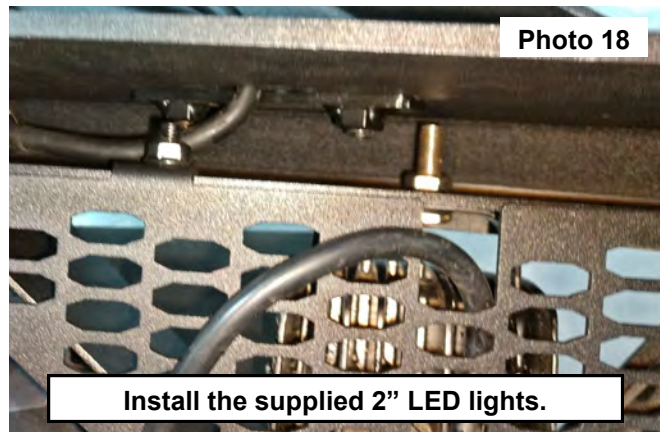
13. Install the supplied 20" LED light bar into the light mount using the supplied hardware and the corresponding instruction sheet with that kit. **See Photo 13. NOTE: Wire needs to exit the mount toward the passengers side of the mount.**
14. Install the wiring harness from the 20" light bar into the access hole in the passengers side of the bumper. **See Photo 14.**



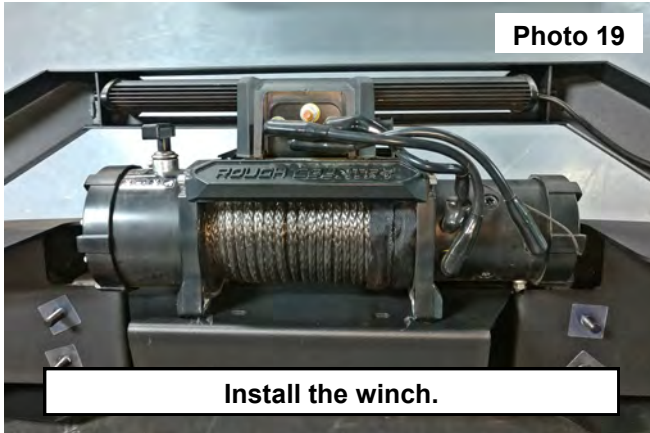
15. Secure the light mount on top of the bumper using (2) the supplied flag nuts and (4) 8mm x 30mm Hex Head Bolts. **See Photos 15 and 16.** Tighten using a 13mm wrench.



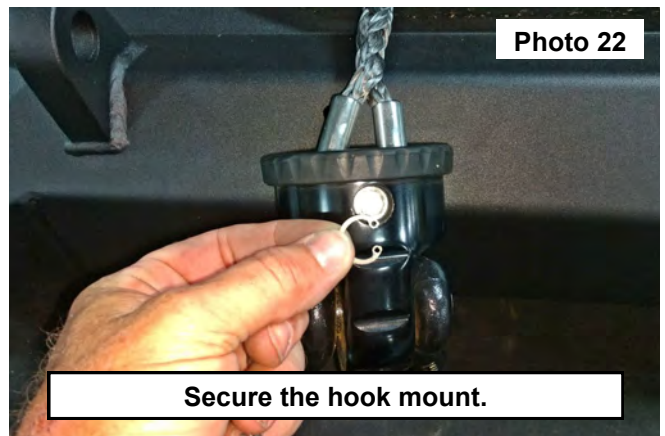
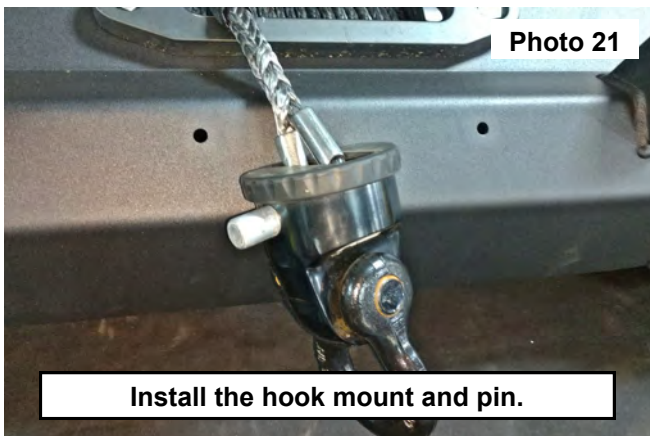
16. Install the supplied 2" LED lights into the bumper on each side using the supplied hardware and instructions provided in the kit. **See Photos 17 and 18.**



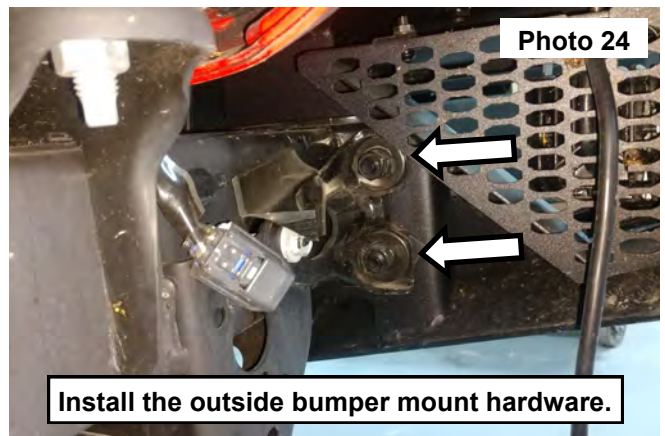
17. Install the winch onto the bumper using the supplied hardware in the winch kit. **See Photo 19.**
18. Install the rope into the fairlead. Then mount the fair lead onto the bumper using the supplied hardware in the winch kit. **See Photo 20.**



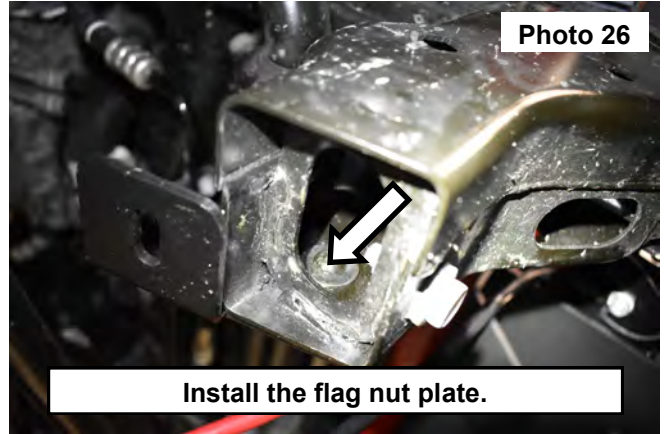
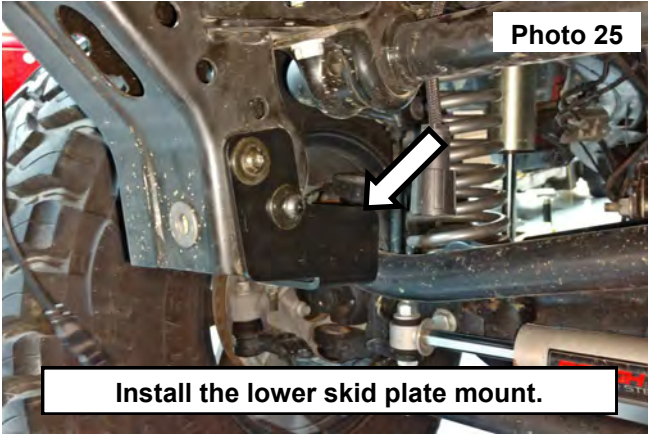
19. Install the hook mount and pin onto the rope end. **See Photo 21.**
20. Secure the pin by installing the snap ring into the hook mount. **See Photo 22.**



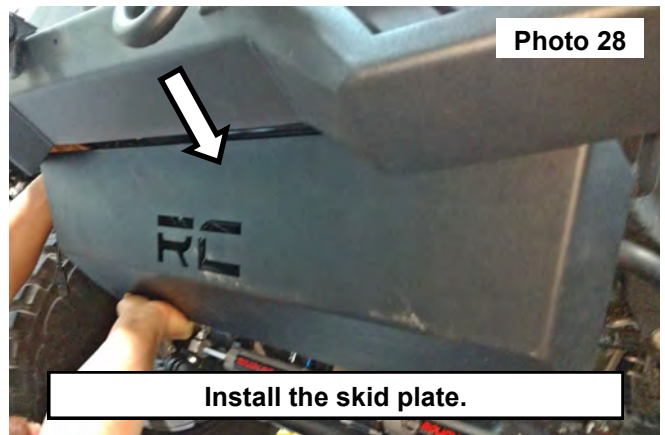
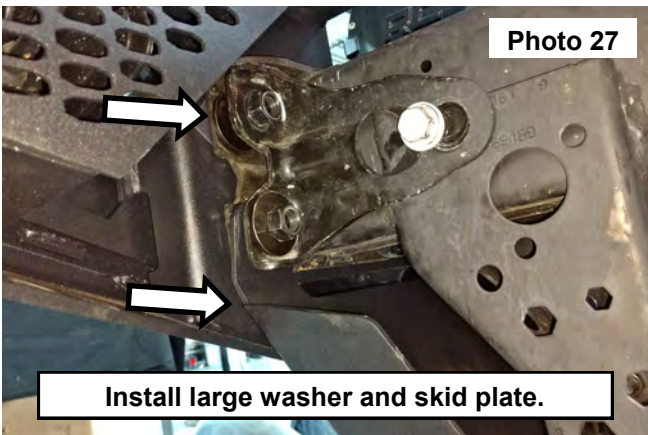
21. Support the bumper and install the bumper onto the vehicle. **See Photo 23.**
22. Secure the outside frame mounts of the bumper using (2) of the supplied 12mm large washer, (2) 12mm Lock Washers and (2) 12mm nuts. Snug the bumper to the vehicle using a 18mm socket. **See Photo 24.**



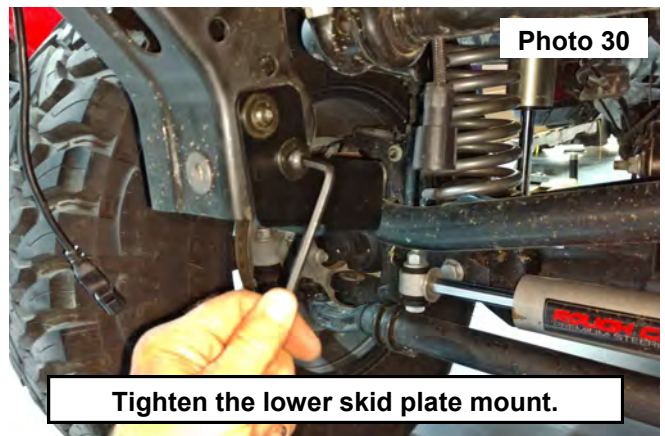
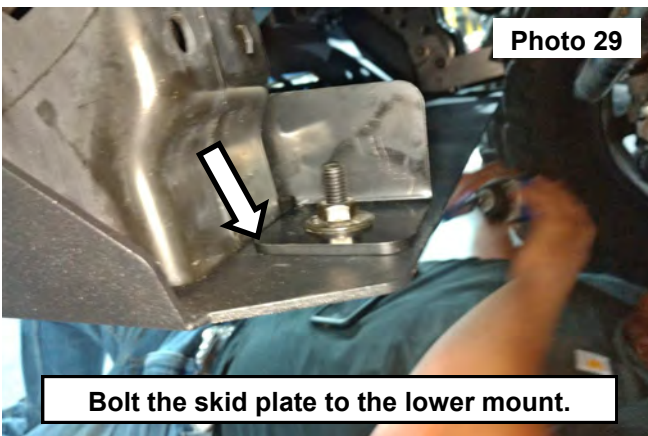
23. Install the skid plate bracket onto the lower frame mount. **See Photo 25.**
 24. Install the supplied nut plate into the lower frame mount and secure the skid plate mount using (2) 6mm flat washers and (2) of the supplied 6mm button head bolts . **See Photo 26.**



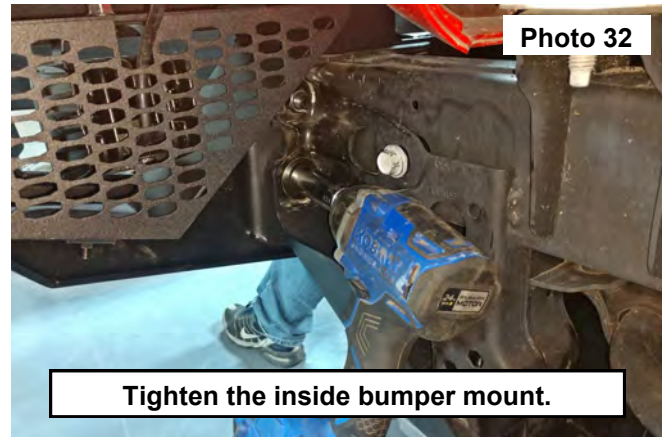
25. Using a 15mm socket loosen the bumper support and insert the upper Large washer on the top stud on each side. Then install the skid plate onto the lower stud on each side of the vehicle and secure using (2) of the supplied 12mm large washer, (2) 12mm Lock Washers and (2) 12mm nuts. Snug the bumper to the vehicle using a 18mm socket. **See Photos 27 and 28.**



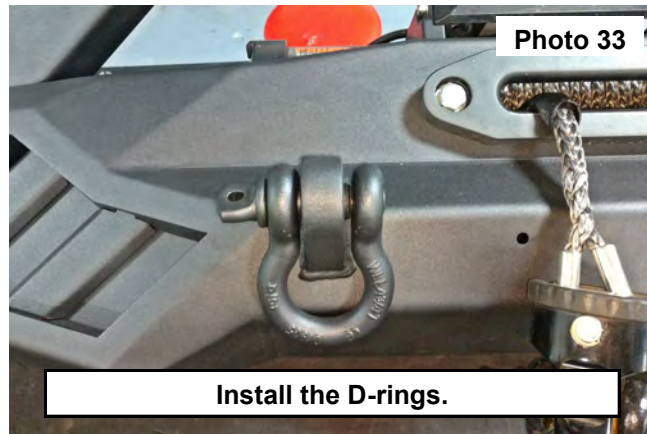
26. Secure the lower skid plate to the frame mount on each side using (1) 6mm Button head allen bolt, (2) 6mm Flat washers and (1) 6mm nut. Tighten using a 5mm allen wrench and a 11mm wrench. **See Photo 29.**
 27. Tighten the lower skid plate mount using a 5mm allen wrench. JL/Gladiator Shown. **See Photo 30.**



28. Tighten the out side and inside bumper mounts using an 18mm socket. **See Photos 31 and 32.**



29. Tighten the outside bumper frame brace shown in Photo 27 using a 15mm socket.
30. Connect the 20" LED light wiring harness and the 2" LED light kit to the vehicle / battery using the corresponding instruction sheets provided with those kits.
31. Connect the winch power wires to the battery using the corresponding instruction sheet provided with the winch kit.
32. Install the D-rings onto the bumper. **See Photo 33.**
33. Check all bolts after 500 miles to be tight and all wiring to be secure and out of harms way.



By purchasing any item sold by Rough Country, LLC, the buyer expressly warrants that he/she is in compliance with all applicable, State, and Local laws and regulations regarding the purchase, ownership, and use of the item. It shall be the buyers responsibility to comply with all Federal, State and Local laws governing the sales of any items listed, illustrated or sold. The buyer expressly agrees to indemnify and hold harmless Rough Country, LLC for all claims resulting directly or indirectly from the purchase, ownership, or use of the items.

