

ROUGH COUNTRY

SUSPENSION SYSTEMS®

JEEP 2018-UP JL / 2020 GLADIATOR FRONT TUBE DOORS

Thank you for choosing Rough Country for all your vehicle needs.

Please read instructions before beginning installation. Check the kit hardware against the kit contents shown below. Be sure you have all needed parts and know where they go.

If question exist, please call us @1-800-222-7023. We will be happy to answer any questions concerning this product.

Check all fasteners for proper torque. Check to ensure for adequate clearance between all components.

Periodically check all hardware for tightness.

KIT CONTENTS:

Driver Side FR Tube Door x1
 Pass Side FR Tube Door x1
 Door Latch Plate x2
 Door Latch x2
 Door Latch shims x8
 Mirror Shim Plate x2
 Rubber Snubber x2

TOOLS NEEDED:

T40 Torx Bit
 T45 Torx Bit
 10mm Wrench or Socket
 13mm Wrench or Socket

HARDWARE INCLUDED:

6mm Lock Washer x4
 6mm Flat Washer x12
 6mm x 25mm Button Head Bolt x8
 6mm Lock Nut x4
 8mm Lock Nut x4
 8mm Flat Washer x4
 Included Tool 4mm Allan Wrench



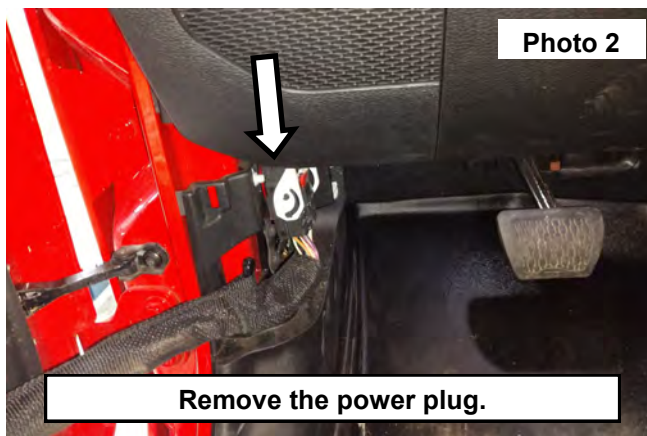
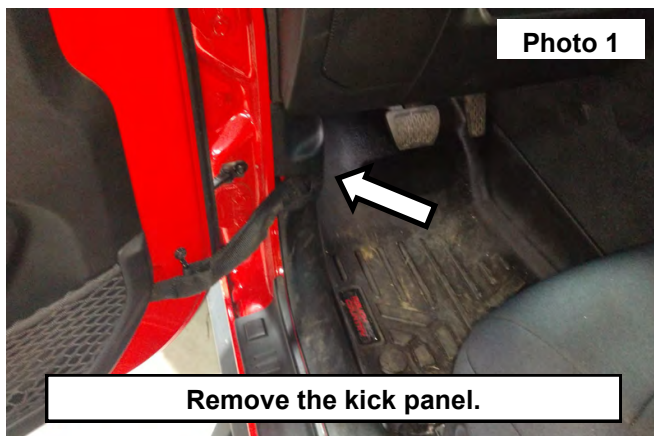
Torque Specs:

Size	Grade 5	Grade 8	Size	Class 8.8	Class 10.9
5/16"	15 ft/lbs	20ft/lbs	6MM	5ft/lbs	9ft/lbs
3/8"	30 ft/lbs	35ft/lbs	8MM	18ft/lbs	23ft/lbs
7/16"	45 ft/lbs	60ft/lbs	10MM	32ft/lbs	45ft/lbs
1/2"	65 ft/lbs	90ft/lbs	12MM	55ft/lbs	75ft/lbs
9/16"	95 ft/lbs	130ft/lbs	14MM	85ft/lbs	120ft/lbs
5/8"	135ft/lbs	175ft/lbs	16MM	130ft/lbs	165ft/lbs
3/4"	185ft/lbs	280ft/lbs	18MM	170ft/lbs	240ft/lbs



INSTALLATION INSTRUCTIONS

1. Remove the kick panel to access the power plug. **See Photo 1.** Save for reinstallation.
2. Flip the security latch on the plug and unplug the door power plug. **See Photo 2.**



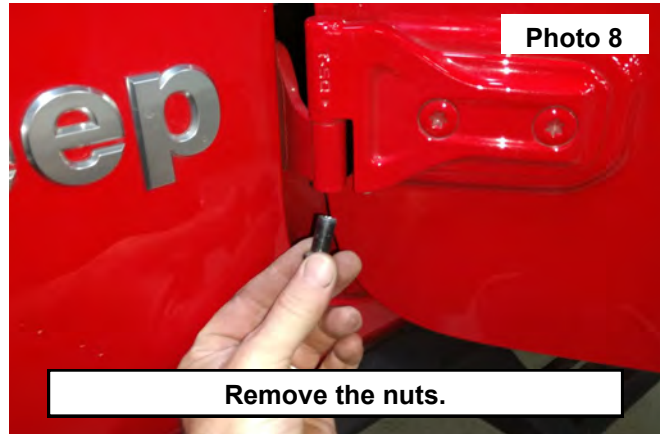
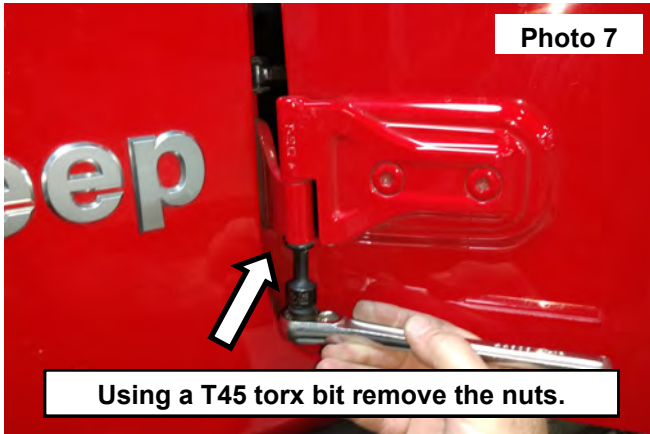
3. Disconnect the door tether from the hook. **See Photo 3.**
4. Using a T40 torx bit remove the door stop from the body of the vehicle. **See Photo 4.** Retain hardware for reinstallation of the doors.



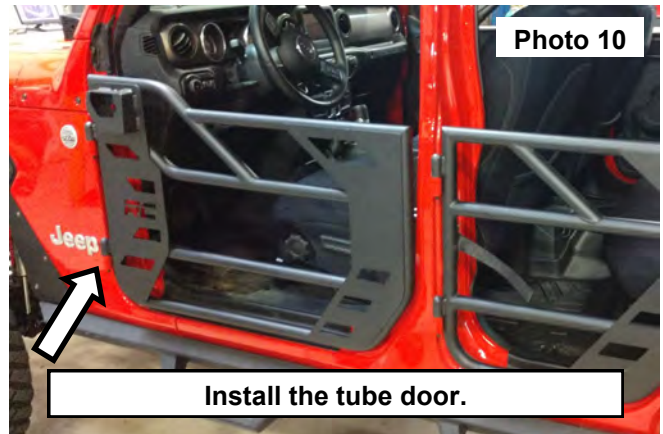
5. Using a T40 torx bit remove the 3 bolts from the mirrors. **See Photo 5.** Retain hardware for later use.
6. Disconnect the wiring harness from the mirror and remove the mirror from the door. **See Photo 6.** Set aside in a safe location these will be reinstalled in a later step.



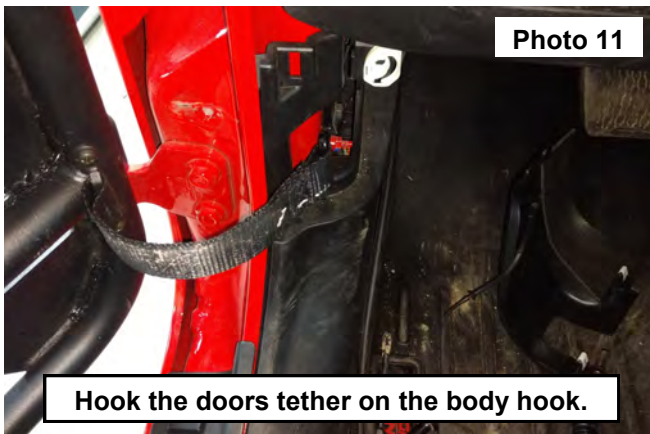
7. Using a T45 torx bit remove the upper and lower threaded retainers from the bottom of the hinge pin. **See Photos 7 and 8.** Retain hardware for later use when the factory doors are re-installed onto the vehicle.



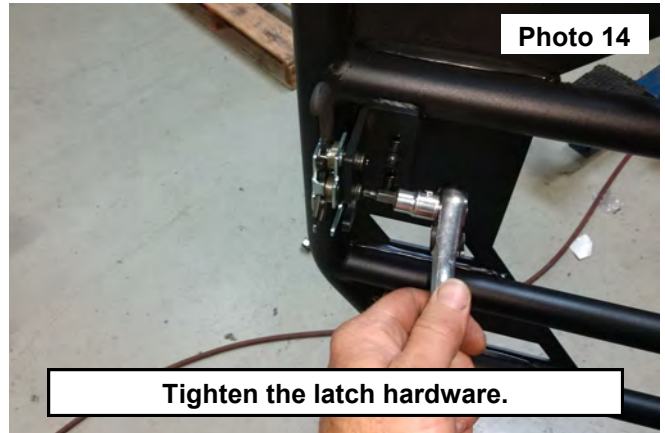
8. Lifting up releasing the door hinge from the body of the vehicle, taking caution not to scratch the surrounding area. Remove the door from the vehicle. **See Photo 9.** Set aside in a safe place on padding and cover to prevent damage.
9. Install the new Rough Country Tube door onto the vehicle. **See Photo 10.**



10. Hook the tube doors tether onto the body mount hook. **See Photo 11.**
11. Install the door latch plate onto the tube door using 2 of the supplied 6mm x 25mm button head bolt, (4) 6mm flat washers and (2) 6mm nylock nut. Snug hardware using a 4mm allen wrench and a 10mm open end wrench. **See Photo 12.**



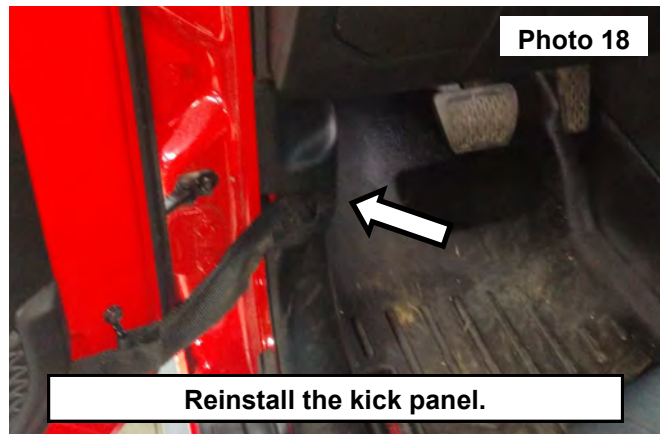
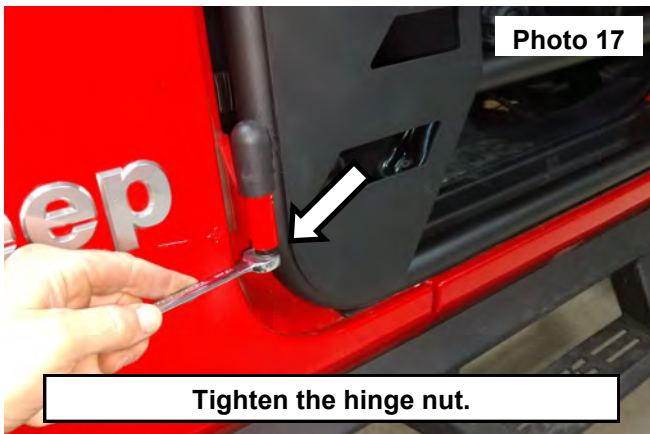
12. Install the door latch onto the latch plate with the latch release pointed up using 2 of the supplied 6mm x 25mm button head bolt, (2) 6mm flat washers. Snug hardware using a 4mm allen wrench. **See Photo 13.** If needed install the shim plates between the latch plate and the tube door to allow the latch to function properly.
13. Tighten the latch and the latch plate using a 4mm allen wrench and a 10mm socket. **See Photo 14.**



14. Install the mirror onto the out side of the tube door. **See Photo 15.**
15. Using the supplied mirror shim plate. Install the 3 OE bolts with the shim plate into mirror. Tighten using a T45 torx bit. **See Photo 16.**



16. Install the supplied 8mm flat washers and nuts on the bottom of the studs. Snug down using a 13mm wrench, then back off half of a round to free up the door. **See Photo 17.**
17. Install the kick panel that was removed in step 1. **See Photo 18.**
18. Install the rubber snubber(if not already installed) in the bottom jam mount of the door.



By purchasing any item sold by Rough Country, LLC, the buyer expressly warrants that he/she is in compliance with all applicable, State, and Local laws and regulations regarding the purchase, ownership, and use of the item. It shall be the buyers responsibility to comply with all Federal, State and Local laws governing the sales of any items listed, illustrated or sold. The buyer expressly agrees to indemnify and hold harmless Rough Country, LLC for all claims resulting directly or indirectly from the purchase, ownership, or use of the items.

