

ROUGH COUNTRY

SUSPENSION SYSTEMS®

JEEP 07-18 JK FRONT TUBE DOOR KIT

Thank you for choosing Rough Country for all your vehicle needs.

Please read instructions before beginning installation. Check the kit hardware against the kit contents shown below. Be sure you have all needed parts and know where they go.

If question exist, please call us @1-800-222-7023. We will be happy to answer any questions concerning this product. .

KIT CONTENTS:

- 1-Drivers Front Door
- 1-Passengers Front Door
- 2- Door Latches

HARDWARE INCLUDED:

- 2-4mm x 20mm Button Head Bolt
- 6-5mm Flat Washers
- 4-6mm Lock Washers
- 4-6mm Flat Washers
- 4-6mm x 25mm Button Head Bolts
- 4-8mm Flat Washer
- 4-8mm Lock nut

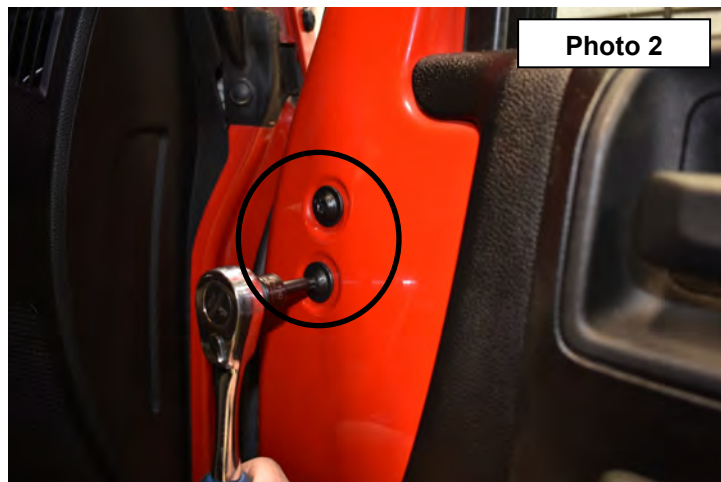
TOOLS NEEDED:

- 4mm Allen Wrench
- T40 Torx Bit
- T50 Torx Bit
- 3/8 Ratchet
- 13mm Wrench



INSTALLATION INSTRUCTIONS

1. Remove the nuts on the bottom of the outside door hinge using a T50 torx bit . **See Photo 1.**
2. If using the stock mirrors on the new tube doors, remove the two bolts on the inside of the door to remove the OE mirror using a T40 torx bit **See Photo 2.** If not reusing stock mirrors, skip to step 4.



3. Remove mirror and save hardware for later use. **See Photo 3.**
4. Under the dash unplug the power window plug. Slide the red tab back and disconnect. Then remove the strap from the hook inside the door jamb. **See Photo 4.**



Photo 3

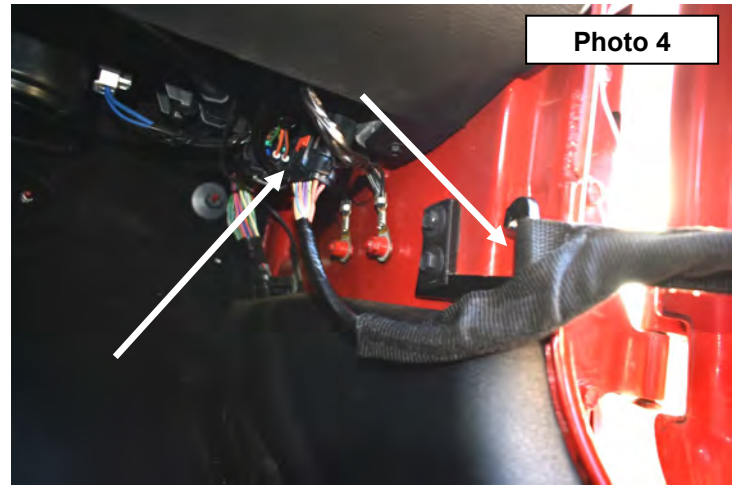


Photo 4

5. Lift straight up on the door to remove from the hinge. It may be necessary to move the door back and forth while lifting to remove the door. **See Photo 5.**
6. Install the new RC door. Hang the door on the jeep by the hinge. **See Photo 6.**



Photo 5



Photo 6

7. Install the supplied 8mm flat washers and nuts on the bottom of the studs. Snug down using a 13mm wrench, then back off half of a round to free up the door. **See Photo 7.**
8. Install the latch mechanism as shown with the supplied 6mm x 25mm bolt, lock washers and lock washers. **See Photo 8.**

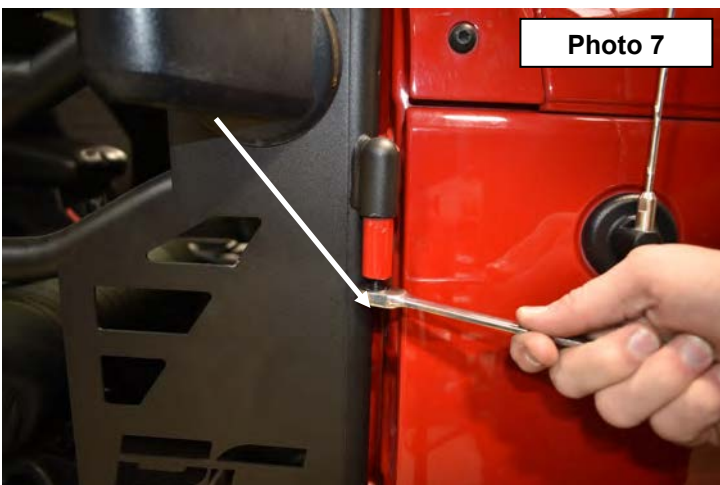


Photo 7

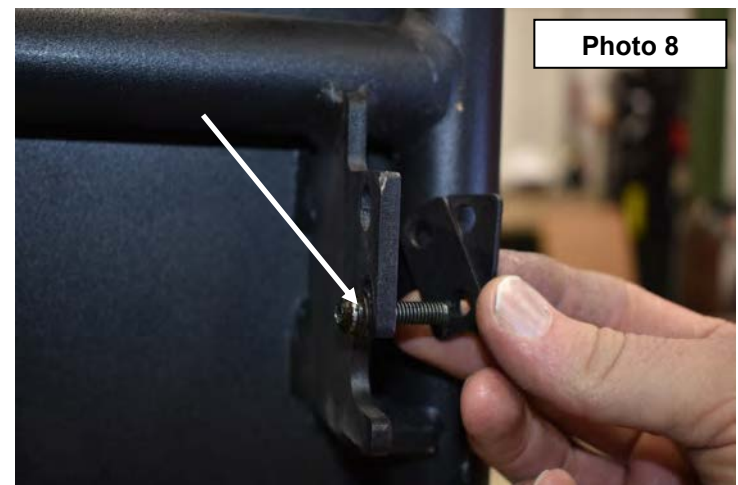
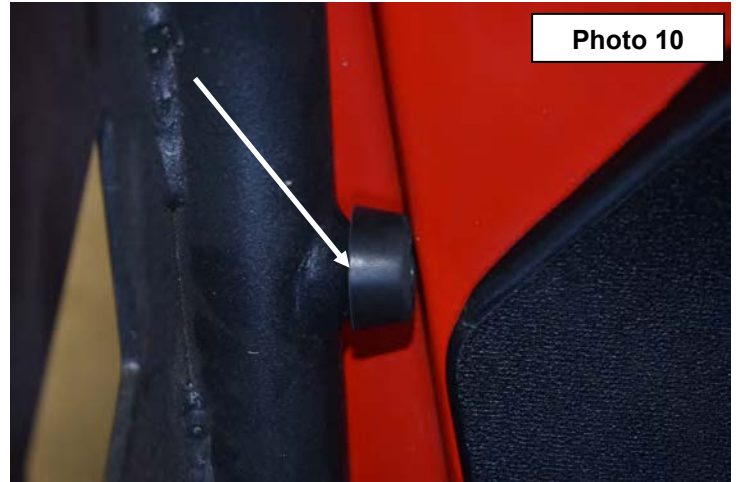
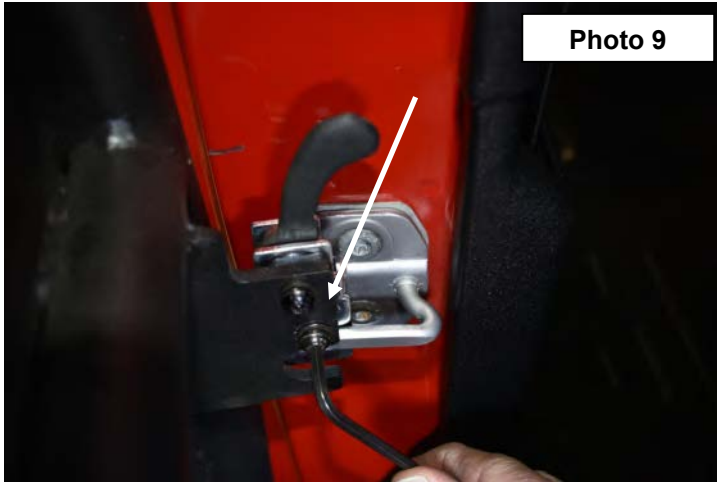
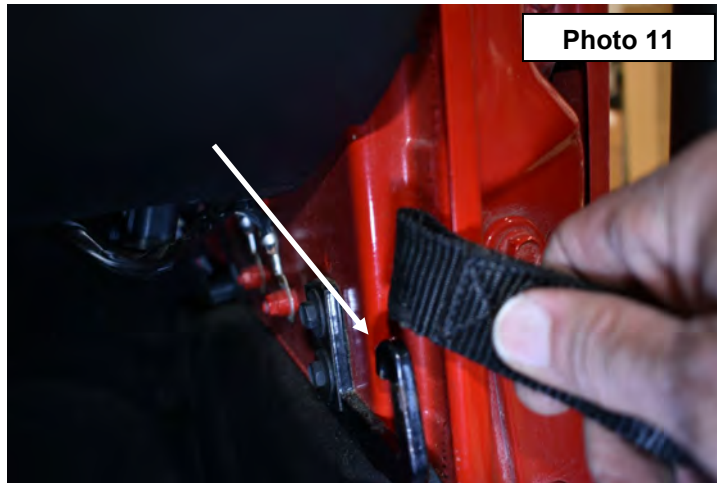


Photo 8

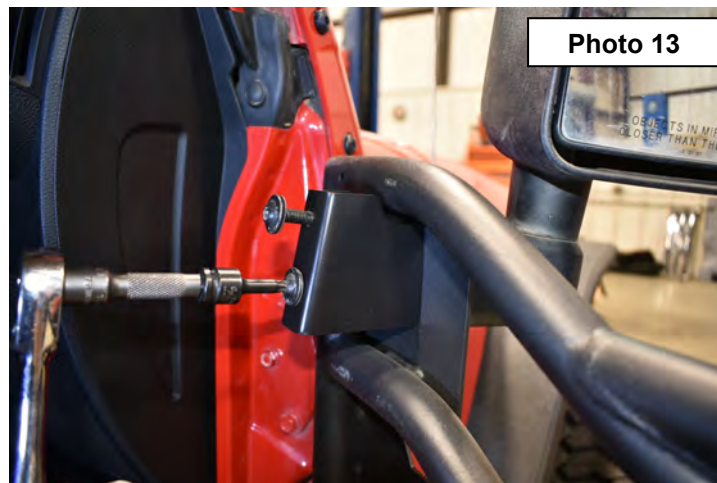
9. Check to see if a shim is needed on the latch mechanism by closing the door. Shim latch as needed to engage the door pin and tighten using a 4mm Allen wrench. **See Photo 9.**
10. Install the supplied rubber snubbers with the supplied 4mm x 20mm button head bolts, and check to ensure the snubbers hold the door tightly against the door jamb. If needed, add the supplied washers between the tube door and snubber to make sure the door is tight against the jamb. **Photo 10.** Tighten with a 2.5 Allen wrench



11. Hook the door strap back on to the hook inside the door jamb. **See Photo 11.**
12. If using the factory mirrors, locate the supplied adaptor bracket and Install the mirror on the outside of the door. **See Photo 12 & 13.** If using Rough Country Part # 10519 mirrors, install those mirrors using those instructions.



13. Install the mirror bracket over the studs using the OE bolts to secure to the door use a T40 torx bit to tighten **See Photo 13. & 14.**



By purchasing any item sold by Rough Country, LLC, the buyer expressly warrants that he/she is in compliance with all applicable Federal, State, and Local laws and regulations regarding the purchase, ownership, and use of the item. It shall be the buyers responsibility to comply with all Federal, State and Local laws governing the sales of any items listed, illustrated or sold. The buyer expressly agrees to indemnify and hold harmless Rough Country, LLC for all claims resulting directly or indirectly from the purchase, ownership, or use of the items.

