



**IF YOUR ReadyLIFT PRODUCT IS MISSING A PART  
OR HAS A DAMAGED PART, PLEASE  
CONTACT CUSTOMER SERVICE DIRECTLY.**

**A NEW REPLACEMENT PART WILL BE SENT TO YOU IMMEDIATELY**

**(800)549-4620**

**MON-FRI 7AM-5PM PST**

**OR**

**EMAIL: INFO@ReadyLIFT.COM**

**WEBSITE: ReadyLIFT.COM**

**\*\*Please retain this document in your vehicle at all times\*\***

### **ReadyLIFT Limited Lifetime NO Fine Print Warranty**

**This unique product warranty proves our commitment to the quality and reliability of every product that ReadyLIFT manufactures. The ReadyLIFT warranty does not include shock absorbers.**

**The ReadyLIFT product warranty only extends to the original purchaser of any ReadyLIFT product, if it breaks, we will give you a new part. Warranty does not apply to discontinued parts**

Product purchased directly from ReadyLIFT has a 30 day return policy on uninstalled products from the date of purchase. Uninstalled product returns must be in the original ReadyLIFT packaging. Please call **800-549-4620** to get an RGA# for any return. Customer is responsible for shipping costs back to ReadyLIFT. **Returns without RGA# will be refused.** Contact ReadyLIFT directly about any potentially defective parts prior to removal from vehicle. If the part in question is deemed warrantable an RGA# will be assigned and can be returned for repair or replacement. Replacement parts required prior to warranty claim completion must be purchased. Upon receipt and verification of deemed warranty parts claim, a credit or refund can then be processed to complete warranty claim transaction.

ReadyLIFT products are **NOT** intended for off-road abuse. Any damage or failure as a result from off-road abuse voids the warranty of the ReadyLIFT product. ReadyLIFT is **NOT** responsible for any subsequent damages to any related vehicle parts due to misuse, abuse, improper installation, or lack of maintenance. Furthermore, ReadyLIFT reserves the right to change, modify or cancel this warranty without prior notice.

**[www.ReadyLIFT.com](http://www.ReadyLIFT.com)**

**Please read Instructions thoroughly and completely before beginning installation.  
Installation by a certified mechanic is recommended.**

**ReadyLIFT Suspension Inc. is NOT responsible for any damage or failure resulting from improper installation.**

**Safety Warning:** Suspension systems or components that enhance the on and off-road performance of your vehicle may cause it to handle differently than it did from the factory. Extreme care must be used to prevent loss of control or vehicle rollover during abrupt maneuvers. Always operate your vehicle at reduced speeds to ensure your ability to control your vehicle under all driving conditions. Failure to drive safely may result in serious injury or death to driver and passengers. Driver and passengers must ALWAYS wear your seat belts, avoid quick sharp turns and other sudden maneuvers. ReadyLIFT Suspension Inc. does not recommend the combined use of suspension lifts, body lifts, or other lifting devices. You should never operate your vehicle under the influence of alcohol or drugs. Constant maintenance is required to keep your vehicle safe. Thoroughly inspect your vehicle before and after every off-road use.

**Installation Warning:** All steps and procedures described in these instructions were performed while the vehicle was properly supported on a two post vehicle lift with safety jacks. Use caution during all disassembly and assembly steps to insure suspension components are not over extended causing damage to any vehicle components and parts included in this kit. Included instructions are guidelines only for recommended procedures and are not meant to be definitive. Installer is responsible to insure a safe and controllable vehicle after performing modifications.

ReadyLIFT Suspension Inc. recommends the use of an OE Service Manual for model/year of vehicle when disassembly and assembly of factory and related components. Unless otherwise specified, tighten all bolts and fasteners to standard torque specifications listed within the OE Service Manual, or as referenced in the torque specification list provided in these instructions.

Suspension components that use rubber or urethane bushings should be tightened with the vehicle at normal ride height. This will prevent premature wear or failure of the bushing and maintain ride comfort. Larger tire and wheel combinations may increase leverage on suspension, steering, and related components. Due to payload options and initial ride height variances, the amount of lift is a base figure. Final ride height dimensions may vary in accordance to original vehicle ride height. Always measure the vehicle ride height prior to beginning installation.

### Vehicle ride height chart

**Driver Front:  
Stock height**

**Lift installed**

**Driver Rear:  
Stock height**

**Lift installed**

**Pass. Front:  
Stock height**

**Lift installed**

**Pass. Rear:  
Stock height**

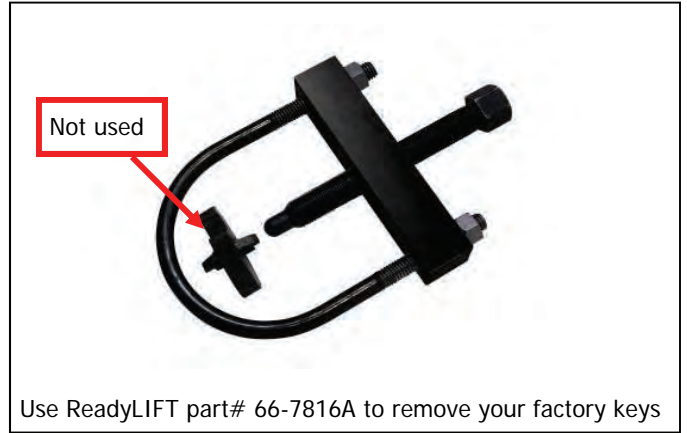
**Lift installed**

Bolt Size Millimeters	Torque Specs in FT/LB		Bolt Size SAE	Torque Specs in FT/LB	
	Metric Grade 8.8	Metric Grade 10.9		Grade 5	Grade 8
6mm	6	8	5/16	15	20
8mm	16	22	3/8	30	35
10mm	40	45	7/16	45	60
12mm	54	70	1/2	65	90
14mm	89	117	9/16	95	130
16mm	132	175	5/8	135	175
18mm	182	236	3/4	185	280

## Installation Instructions (69-3411 & 69-3412)



Measure ride height then lift vehicle and remove wheels/tires.



Use ReadyLIFT part# 66-7816A to remove your factory keys



Securely lift vehicle and remove wheels



Push back soft fender liner to remove upper shock nuts.



Loosen and remove lower shock hardware. **New shocks req'd**



Remove torsion bar adjuster bolt. It will be reused.



Position torsion bar unloading tool over cross member



Adjust tool just enough to remove keeper block



## Installation Instructions (69-3411 & 69-3412)



**Caution:** Slide torsion bar forward and remove OE torsion key



Install new torsion key and slide bar into position



Remove skid plate bolts and skid plate



Disconnect outer tie rod nut and strike spindle to disconnect.



Loosed and remove inner/outer tie rod from center link.



Locate new assembled HD steering kit and install zerk fittings



Install new steering assembly on center link



Attach outer tie rod to spindle and tighten



## Installation Instructions (69-3411 & 69-3412)



Support differential and remove differential mounting bolts



Remove (4) diff mounting bolts at frame, lower differential.



Install (4) differential drop spacers with new hardware



Loosen and remove upper ball joint nut.



Strike spindle to disconnect ball joint from upper control arm



Loosen and remove pivot bolts and cams; they are very tight.



Remove upper control arm from frame pockets



At forward control arm pocket attach clip and droop limiter.



## Installation Instructions (69-3411 & 69-3412)



Install zerk fittings and apply grease to pivot tubes



Assemble bushing halves and insert crush sleeves



Install new upper control arm assembly with OE hardware



Connect upper ball joint to spindle



Remove factory lower control arm bump stops (4)



Install new provided bump stops (4) in OE locations



Longer shock are required for this kit, use **RL #99-3414F**



Adjust torsion bars to approx ride height



## Installation Instructions (69-3411 & 69-3412)



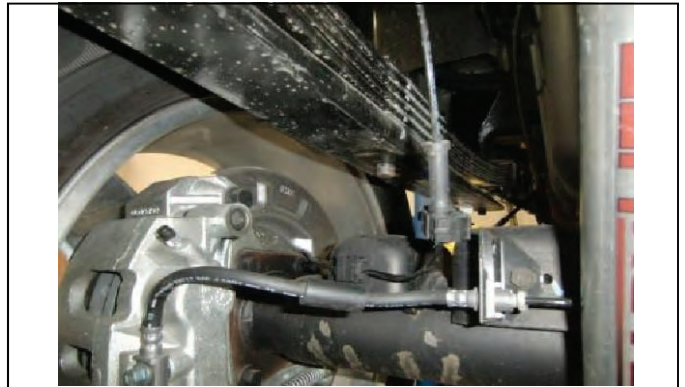
Properly support rear axle and disconnect lower shock mount



Unhook ABS wire from axle to prevent damage



Loosen and remove u-bolt hardware



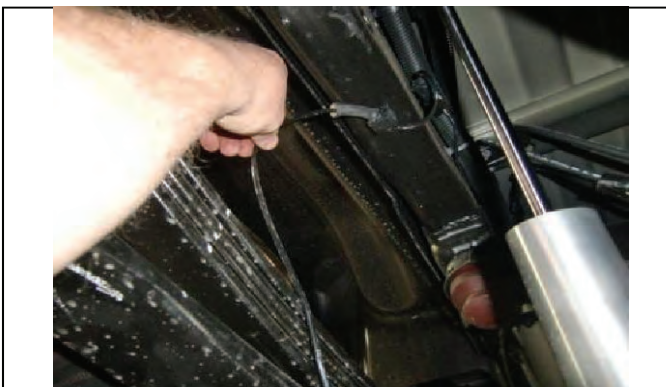
Carefully lower axle enough to install lift block



Locate lift block on axle mount and raise to meet leaf spring



Install new longer u-bolts and install new hardware,



Slide ABS wire clip at frame to gain slack to avoid damage



Torque u-bolts with vehicle on ground and re-clip ABS wire

## Installation Instructions (69-3411 & 69-3412)



Longer shocks recommended for this kit use **RL# 69-3411R**



Reinstall front skid plate



Install wheels/tires lower vehicle to ground check clearances

Once you have tightened all hardware and reinstalled and torqued the wheels/tires, it is now necessary to adjust the torsion bar keys to the desired height, (**Not to exceed 3.25 in. on 4WD models, up to 4.0 in. on 2WD models**). When adjusting the torsion keys, make sure to take pressure off of the suspension in order to avoid damaging the adjusting bolts. The vehicle will also need to be aligned and final adjustments may be required in order to properly align. Align vehicle to factory specs and be sure to readjust the headlamps as well. **Failure to adhere to these specifications will void the ReadyLIFT warranty!**



Slight/moderate trimming may be necessary for tire clearance





## **Final Checks & Adjustments**

**Post Installation Warnings:** Once the vehicle is lowered to the ground, check all parts which have rubber or urethane components to insure proper torque. Torque wheels to factory specs. Move vehicle backwards and forwards a short distance to allow suspension components to adjust. Turn the front wheels completely left then right and verify adequate tire, wheel, brake line, and ABS wire clearance. Test and inspect steering, brake and suspension components for tightness and proper operation. Inspect brakes hoses and ABS lines for adequate slack at full extension. Failure to perform the post inspection checks may result in vehicle component damage and/or personal injury or death to driver and/or passengers. Test drive vehicle and re-check the torque of all fasteners and re-torque wheels on vehicle. Re-adjust headlamps.

**Vehicle Handling Warning:** Vehicles with larger tires and wheels will handle differently than stock vehicles. Take time to familiarize yourself with the handling of your vehicle.

### **Wheel Alignment/Headlamp Adjustment:**

**It is necessary to have a proper and professional wheel alignment performed by a certified alignment technician. Align the vehicle to factory specifications. It is recommended that your vehicle alignment be checked after any off-road driving. In addition to your vehicle alignment, for your safety and others, it is necessary to check and adjust your vehicle headlamps for proper aim and alignment**

### **Vehicle Re-Torque and Safety Inspection:**

Upon completion of all services and adjustments performed on your vehicle, and within 50 miles of driving, check to ensure all fasteners and hardware are properly torqued to specification as noted in the vehicles factory service manual or the torque chart included.

**[WWW.ReadyLIFT.com](http://WWW.ReadyLIFT.com)**

**ReadyLIFT Suspension Inc.  
7490 Commercial Way  
Henderson, NV 89011  
Phone: (702)410-2300  
Fax: (702)410-2794  
Toll Free: (800)549-4620  
Email: [Info@ReadyLIFT.com](mailto:Info@ReadyLIFT.com)**