



FITTING INSTRUCTIONS

Part Number: **5650380, 5650400, X-J8002**
Product **ARB REAR BAR**
Description:
Suited to **JL JEEP SPORT, SAHARA, OVERLAND AND RUBICON**
vehicle/s:
Towbar
Mopar - 82215209
Compatibility: **Hayman Reese - 03292RW**
Optional
Fitting Kit: **5750380 - MUDFLAP MOUNT KIT**
5750390 - NUMBER PLATE RELOCATION KIT

WARNING

NOTE THE FOLLOWING:

- ◆ This product must be installed exactly as per these instructions using only the hardware supplied.
- ◆ In the event of damage to any tow bar component, contact your nearest authorised ARB stockist.
- ◆ Do not use this product for any vehicle make or model, other than those specified by ARB.
- ◆ Do not remove labels from this tow bar.
- ◆ This product or its fixing must not be modified in any way.
- ◆ The installation of this product may require the use of specialized tools and/or techniques
- ◆ It is recommended that this product is only installed by trained personnel.
- ◆ These instructions are correct as at the publication date. ARB Corporation Ltd. cannot be held responsible for the impact of any changes subsequently made by the vehicle manufacturer.
- ◆ During installation, it is the duty of the installer to check correct operation/clearances of all components.
- ◆ Work safely at all times.
- ◆ Unless otherwise instructed, tighten fasteners to specified torque.
- ◆ For recovery, fit a suitable and rated tow hitch to the central tow hitch receiver.
- ◆ Position high lift jack at lift locations beneath the middle of the wings and corner of the RSTB. Do not lift directly from the end of the wing.

ARB 4x4 ACCESSORIES

Corporate Head Office

42-44 Garden St
Kilsyth, Victoria
AUSTRALIA 3137

Tel: +61 (3) 9761 6622
Fax: +61 (3) 9761 6807

Australian enquiries
North & South American enquiries
Other international enquiries

sales@arb.com.au
sales@arbusa.com
exports@arb.com.au

www.arb.com.au

GENERAL CARE AND MAINTENANCE



By choosing an ARB Bar, you have bought a product that is one of the most sought after 4WD products in the world. Your bar is a properly engineered, reliable, quality accessory that represents excellent value. To keep your bar in original condition it is important to care and maintain it following these recommendations:

- Prior to exposure to the weather your bar should be treated to a Carnauba based polish on all exposed surfaces. It is recommended that this is performed on a six-monthly basis or following exposure to salt, mud, sand or other contaminants.
- As part of any Pre-Trip Preparation, or on an annual basis, it is recommended that a thorough visual inspection of the bar is carried out, making sure that all bolts and other components are torqued to the correct specification. Also check that all wiring sheaths, connectors, and fittings are free of damage. Replace any components as necessary. This service can be performed by your local authorized ARB Stockist.

REQUIRED TOOLS FOR FITMENT OF PRODUCT:

BASIC TOOL KIT	METRIC SOCKET SET
----------------	-------------------

HAVE AVAILABLE THESE SAFETY ITEMS WHEN FITTING PRODUCT:

Protective eyewear		Hearing protection	
--------------------	---	--------------------	---

NOTE: 'WARNING' notes in the fitting procedure relate to OHS situations, where to avoid a potentially hazardous situation it is suggested that protective safety gear be worn or a safe work procedure be employed. If these notes and warnings are not heeded, injury may result.

FASTENER TORQUE SETTINGS:

SIZE	Torque Nm	Torque lbft
M6	9Nm	4lbft
M8	22Nm	16lbft
M10	44Nm	32lbft
M12	77Nm	57lbft
M14	115Nm	85lbft

Fitting Kit 6177252 PARTS LISTING

APPLICATION	PART NO.	QTY	DESCRIPTION
	6151699	2	BOLT M12 x 1.25 x 45 Gd 8.8 TZP480
	6151480	2	NUT FLANGE M12 X 1.25 ZP
	6151340	2	BOLT M12 x 1.75 x 50 Gd 8.8 ZP
	4584377	4	WASHER M12 X 30 X 5 ZNS480
	4584363	2	WASHER M12x26x4 HV300 TZP480
	4654502	1	NUT PLT WLD SUITSJL JEEP
	6151295	4	SCREW BTN HD M8 x 20 SS
	6151303	4	NUT CAGED M8 1.8-3.2
	3195159	2	RECOVERY POINT PACKER JL JEEP
	215935	1	LABEL ARB DOMED MED
	211512	1	OPERATOR INSTRUCTION CARD
	2125484	2	RECOVERY POINT WARNING LABEL

ADDITIONAL ITEMS IN 6177496 KIT	PART NO.	QTY	DESCRIPTION
	6151526	6	NUT CAGED M6 1.8-2.7 / BZP480
	6151256	6	SCREW BTN HD M6 X 16 SS
	4581304	6	WASHER FLAT M6 SS
	180302	8	CABLE TIE 4.8X200mm
	3540290	1	SENSOR SURROUND KIT (4)

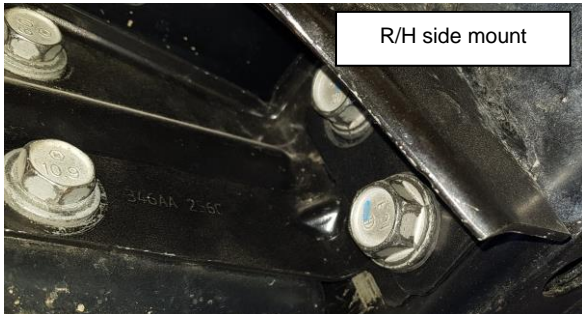
Boxed Kit 6177251 (6177495) PARTS LISTING

APPLICATION	PART NO.	QTY	DESCRIPTION
	4654504R	1	RECOVERY POINT R/H SUITS JL JEEP
	4654504L	1	RECOVERY POINT L/H SUITS JL JEEP
	3750473R	1	WING SUPPORT BRKT R/H JL JEEP
	3750473L	1	WING SUPPORT BRKT L/H JL JEEP

FITTING PROCEDURE



1. To fit the Rear bar, follow these steps:

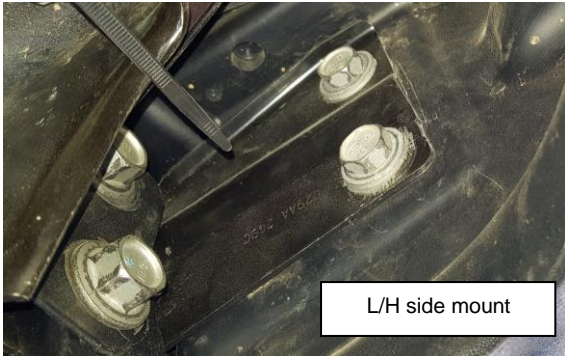


2. Removal of OE bumper from vehicle.

Remove the spare tyre from the rear door.

Remove the 4 bolts each side at the rear of the chassis rail that secure the rear bar. Retain these bolts for later use.

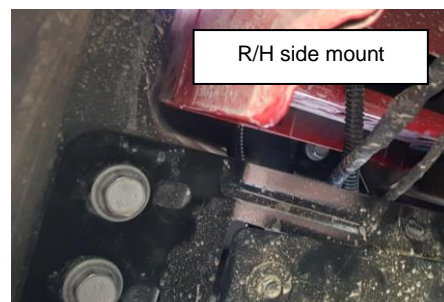
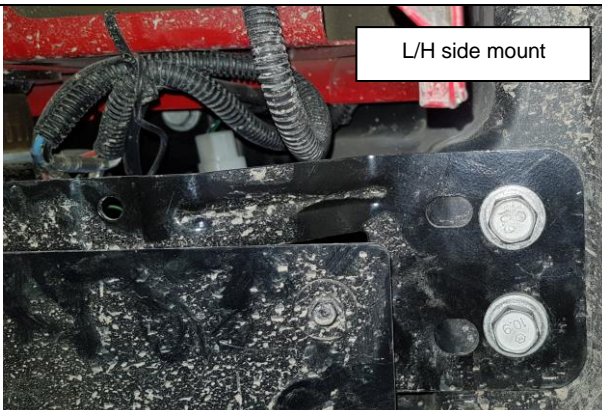
Undo the connector for the light loom located on the chassis at the L/H rear and remove the cable clips holding the loom to the chassis.



3. Remove the tow hook on the R/H chassis rail retain the bolts for later use.



4. Remove 2 bolts each side of car from the wheel arch into the plastic bumper.





- Slide the bar off rearwards. You may need 2 people to avoid damaging the vehicle.



AU model shown

For models with rear fog lights & parking sensors:

The rear bar needs to be completely disassembled to remove the wiring loom. (Follow steps 6-23).

For all other models continue from step 24



- With the bar upside down, on the RHS remove the bolts holding the steel bracket covering the fog light.



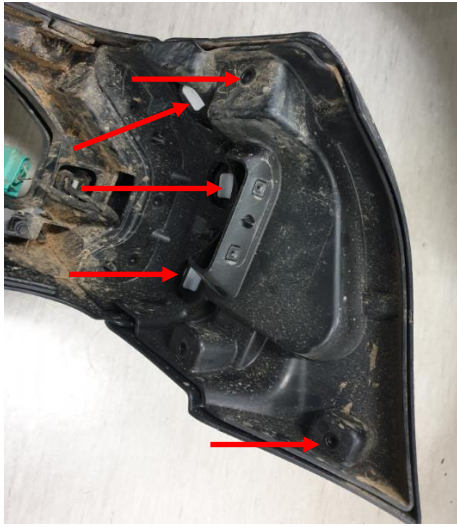
- Remove the 3x fog light retaining screws.



- Unplug the fog light and remove it from the bar.
- Repeat steps 6-8 for LHS.



10. Remove the steel reinforcement bar which is held in by a number of screws.



11. Remove the screws and plastic clips that hold the wing tip outer skins on. Repeat for other side.



12. Remove the screws holding on the wing tip inners.



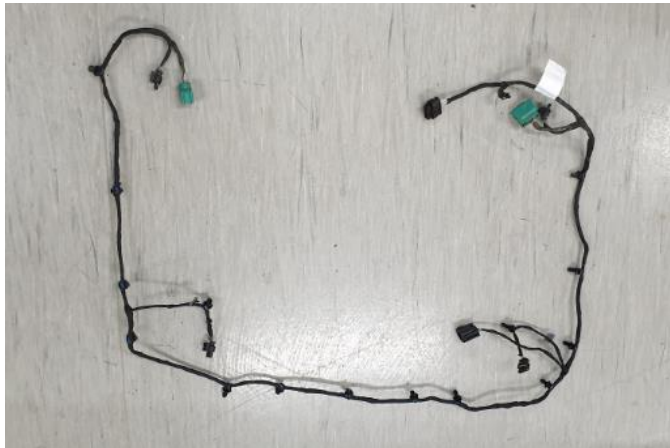
13. Disconnect the number plate light plug.



14. Disconnect all 4 parking sensor plugs.



15. Remove the screws holding the inner bumper skin to the outer. Separate the two parts to expose the wiring loom.



16. Remove the main loom from the inner bumper skin by carefully pulling out the plastic retaining clips. Mark the loom to ensure it is put in the new bar with the right orientation.

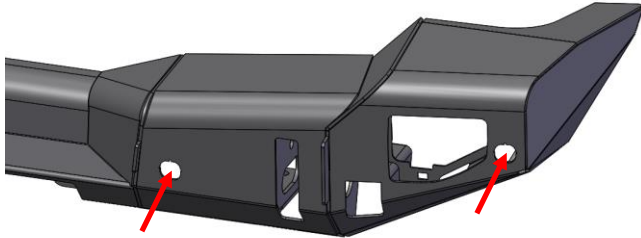


17. Remove the sensors from the OE housings by carefully unclipping them. Mark their positions or install them back onto the loom in the correct positions. Make sure the rubber gromets are still on the sensors.

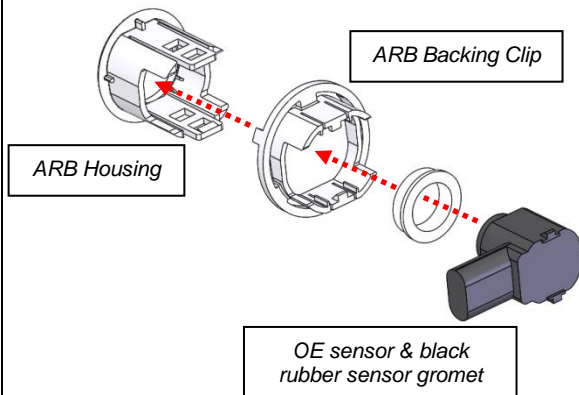
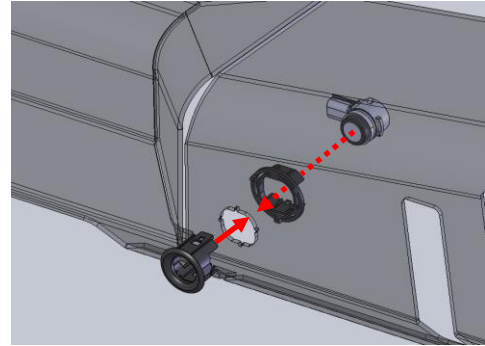
Note: Each sensor has been calibrated differently. They must be returned to their exact position on the loom.



18. Lay the bar down on a surface that won't scratch the powder coat.



19. The ARB sensor housings are installed from the front of the bar, with the backing clip securing it from behind.



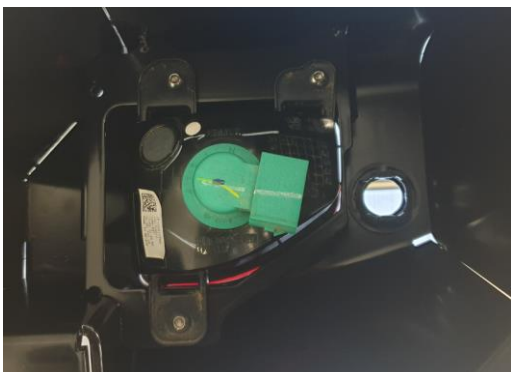
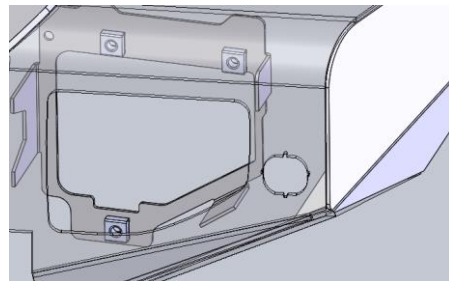
20. Carefully clip each sensor into the housings from behind after the backing clip has been installed.

Note: Ensure that the black rubber gromets are still seated on the sensors.

Generic Image Only



21. Clip the cage nuts in the fog light mounting brackets as shown.



22. Install the fog lights in using the M6x12 SS screws and flat washers. Position fog light in bar with an even gap prior to tightening.





23. Connect the wiring loom to the fog lights and parking sensors. Secure the loom with cable ties provided as shown.



Rear Bar Installation:

Note: If fitting a tow bar, fit now whilst bar is off.

24. If the vehicle is fitted with a factory tow bar as shown, check the length the factory bolts extend out of the flange nuts. If it's more than 5mm use M12 x 5mm washers from the fitting kit, under the bolt heads to ensure the correct clearance is obtained.

** If these bolts are left too long the rear bar will not fit **



25. Using the M12 flange head bolt provided, align the 5mm packer to the recovery point.



26. Set up the bar so you can work from the rear to access the mounts. Slide the recovery point through the slot in the bar. Hold in place with the M12 bolt (shown above and below).

Ensure the 5mm packer is between the chassis mount and the recovery point.



27. Using the M14 chassis bolts (4) removed from the O.E bumper mounts, align the mounting holes. Ensure the packer is lined up with all through holes then tighten the M12 flange head bolt & nut.

M12 Flange head bolt



28. Repeat for the other side.

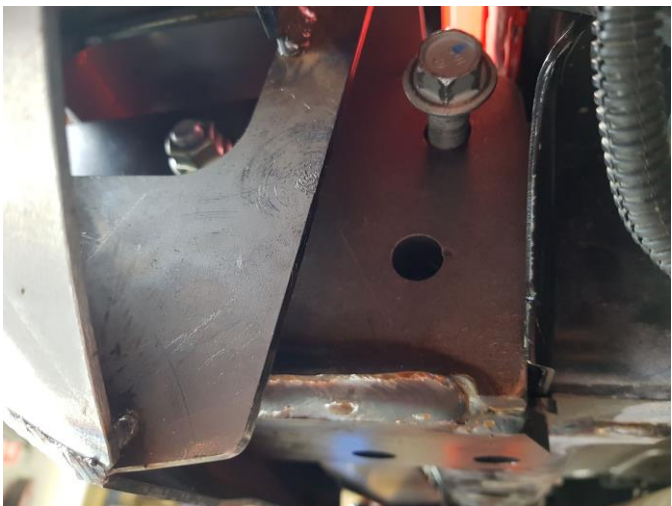
Note: It is important to check that the holes are all lined up or damage to the bolt thread may occur while installing the O.E fasteners.



29. Use 2 people to slide the bar on to the chassis rails of the vehicle. Take care to protect the body work from the inside edges of the wings on both sides.



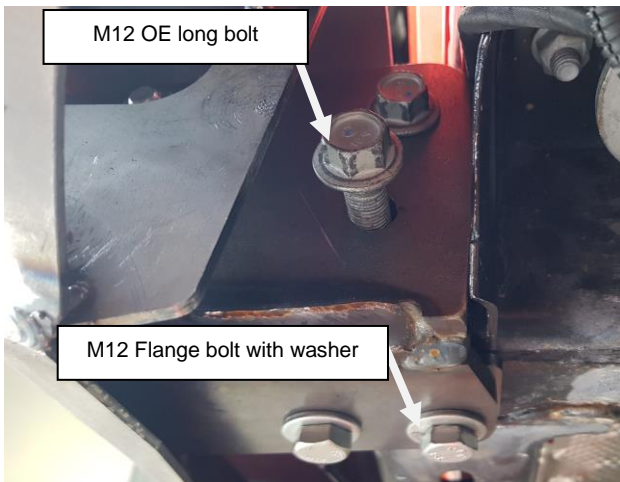
30. On the LH side of the car, use the shorter of the OE bolts with the 22mm hex. Insert one into the rear bottom hole as shown. Leave loose for now.



31. On the RH side of the car use a long OE bolt into the top side chassis rail hole as shown. Leave loose for now.



32. Use the nut plate and M12 bolts supplied. Bend the nut plate to the shape shown and insert into the chassis from the rear.




33. Fit the 2 x M12 bolts with washers to pull the bar up into position. Do not tighten yet. Insert the second OE long bolt and leave finger tight.




34. Check for clearance on the tow bar mounting bolts. Also check the clearance around the tow coupling receiver.



35. Fit the 2 remaining long OE bolts to the side mount holes and the second of the shorter large hex OE bolts to the bottom hole.
36. Tighten all fasteners to the recommended torque:

 M12 - 77 Nm

 M14 - 115 Nm



37. Install the M8 cage nuts to the square holes in the guard.as shown. (RH part shown).

38. Insert the guard behind the body seam and cage nut end behind the bar return panel. Start the 2 x M8 button head screws first, then fit the M8 OE bolts to the chassis rail in the OE position.

*** Use OE bolts for the chassis side mounting*




39. **For models with rear fog lights & parking sensors:**

connect the rear bumper wiring loom back to the loom on the LHS chassis and secure with a cable tie.



40. Torque M8 fasteners to required spec.

 M8 - 22 Nm.



41. Optional kit 5750380 - MUDFLAP MOUNT KIT.

42. Attach tow point rating labels on each side in a prominent position.



Tow point Rating sticker

FITTED PRODUCT: 5650380



5650400

