



FITTING INSTRUCTIONS

Part Numbers: **2814010**

Suited to vehicle/s: **TOYOTA HILUX (2005 – ON) 4 wheel drive models - ONLY**

WARNING

NOTE THE FOLLOWING:

- ◆ This product must be installed exactly as per these instructions using only the hardware supplied.
- ◆ In the event of damage to any recovery point component, contact your nearest authorised ARB stockist. Repairs or modifications must not be attempted.
- ◆ Do not use this product for any vehicle make or model, other than those specified by ARB.
- ◆ Do not remove labels from this recovery point.
- ◆ This product or its fixing must not be modified in any way.
- ◆ The installation of this product may require the use of specialized tools and/or techniques
- ◆ It is recommended that this product is only installed by trained personnel
- ◆ These instructions are correct as at the publication date. ARB Corporation Ltd. cannot be held responsible for the impact of any changes subsequently made by the vehicle manufacturer
- ◆ During installation, it is the duty of the installer to check correct operation/clearances of all components
- ◆ Work safely at all times
- ◆ Unless otherwise instructed, tighten fasteners to specified torque

ARB 4x4 ACCESSORIES

Corporate Head Office

42-44 Garden St
Kilsyth, Victoria
AUSTRALIA 3137

Tel: +61 (3) 9761 6622
Fax: +61 (3) 9761 6807

Australian enquiries
North & South American enquiries
Other international enquiries

sales@arb.com.au
sales@arbusa.com
exports@arb.com.au

www.arb.com.au

GENERAL CARE AND MAINTENANCE

By choosing an ARB Recovery Point, you have bought a product that is one of the most sought after 4WD products in the world. Your recovery point is a properly engineered, reliable, quality accessory that represents excellent value. To keep your recovery point in original condition it is important to care and maintain it following these recommendations:

As part of any Pre Trip Preparation, or on an annual basis, it is recommended that a thorough visual inspection of the recovery point is carried out, making sure that all bolts and other components are torqued to the correct specification. Replace any components as necessary. This service can be performed by your local authorised ARB Stockist.

REQUIRED TOOLS FOR FITMENT OF PRODUCT:

½" Socket Set, Torque wrench
Metric Allen Keys & 10mm Drill
Air saw, Sabre saw, Tin snips or Hack saw

HAVE AVAILABLE THESE SAFETY ITEMS WHEN FITTING PRODUCT:

Protective eyewear



Hearing protection



NOTE: 'WARNING' notes in the fitting procedure relate to OHS situations, where to avoid a potentially hazardous situation it is suggested that protective safety gear be worn or a safe work procedure be employed. If these notes and warnings are not heeded, injury may result.

FASTENER TORQUE SETTINGS:

SIZE	Torque (Nm)	Torque (lbft)
M6 (Class 8.8)	9	7
M8 (Class 8.8)	22	16
M10 (Class 8.8)	44	32
M12 (Class 8.8)	77	57

**Unless otherwise specified*

PARTS LISTING – FITTING KIT 6173211

APPLICATION	PART NO.	QTY	DESCRIPTION
RECOVERY POINT TO CHASSIS	3758195	1	Hilux 05 on recovery point
	6151040	5	M10x1.25x30mm Bolt – GR8.8 ZP
	4581040	5	Washer Flat M10
	4581048	5	Washer Spring M10
SAFETY	211512	1	Operators Instruction Card
	211433	1	Vehicle Recovery Booklet
	2125484	1	Recovery Point Warning Label - Spare
PLATE TO STONE COVER / Under Vehicle Protection (UVP)	3194283	1	Plate Stone Cover
	6582451	1	Clamp Strap Stone Cover
	6151544	4	Bolt BTN / hex head M8 x 16mm BZP
	4581047	4	Washer Spring M8 x 3/32 x 3/32 BZP
	4581085	8	Washer Flat M8 x 19 x 1.2 BZP
	6151212	4	Nyloc nut M8 BZP
	3788055	1	Cutting Template – Stone Shield

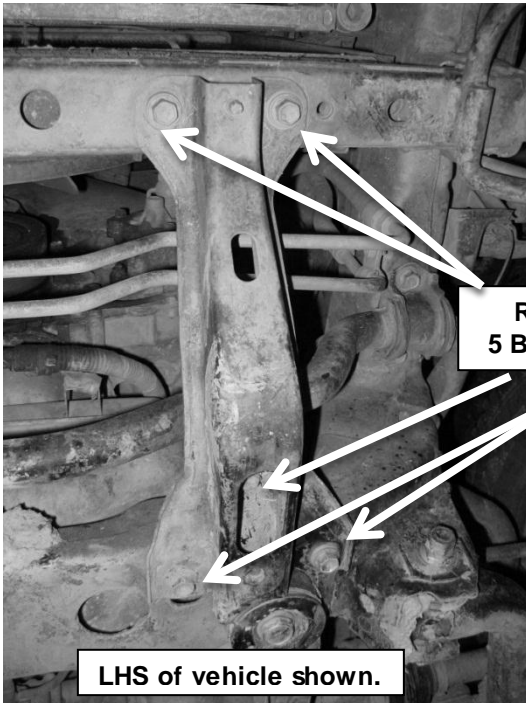
VEHICLE PREPARATION



1. Remove stone shield or under vehicle protection (UVP).

Note:

Keep all fasteners as these will be reused later.



2. Remove the front left brace located between the engine & radiator cross members.

**REMOVE BRACE
5 BOLTS AS SHOWN**

LHS of vehicle shown.

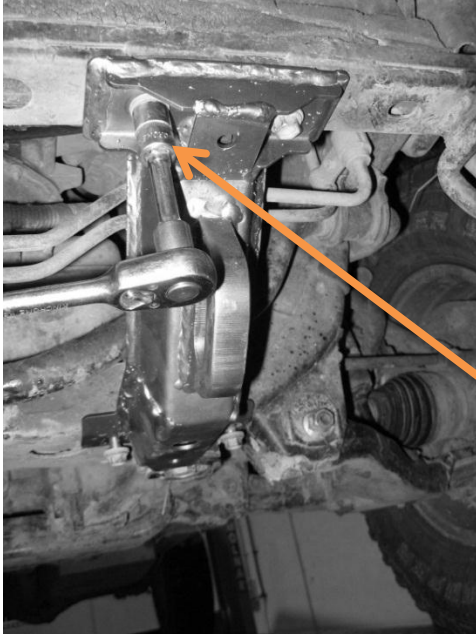


3. Brace removed.
4. Check the captive nuts inside the chassis for wear and damage.

IMPORTANT:

If either is visible, consult your nearest ARB service centre for advice.

FITTING PROCEDURE

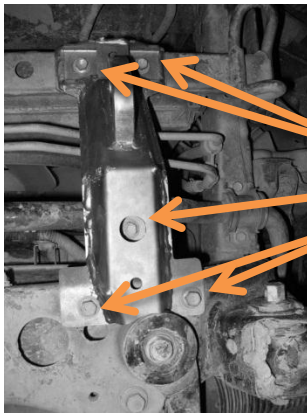


5. Fit M10x1.25x30 mm bolt, spring & flat washer to fasten the recovery point to the chassis (5 bolts) finger tight only.

IMPORTANT:

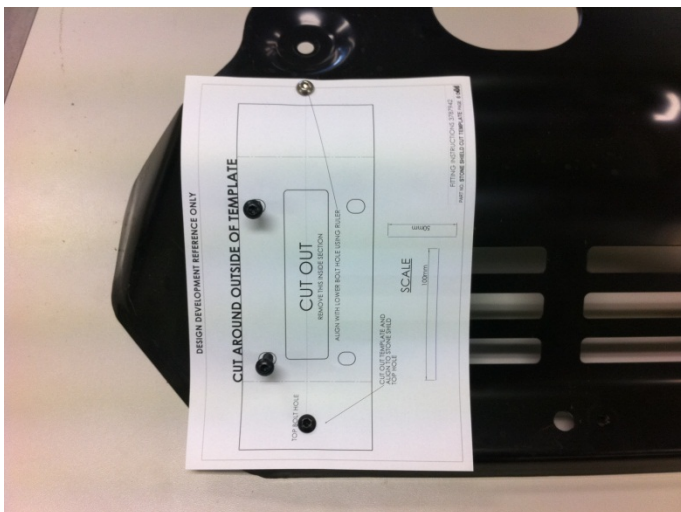
All bolts must be installed finger tight before any of them are torqued to their appropriate specifications.

6. Begin with the front right M10 bolt (*shown*) and tighten to the appropriate torque given on *page 2*.



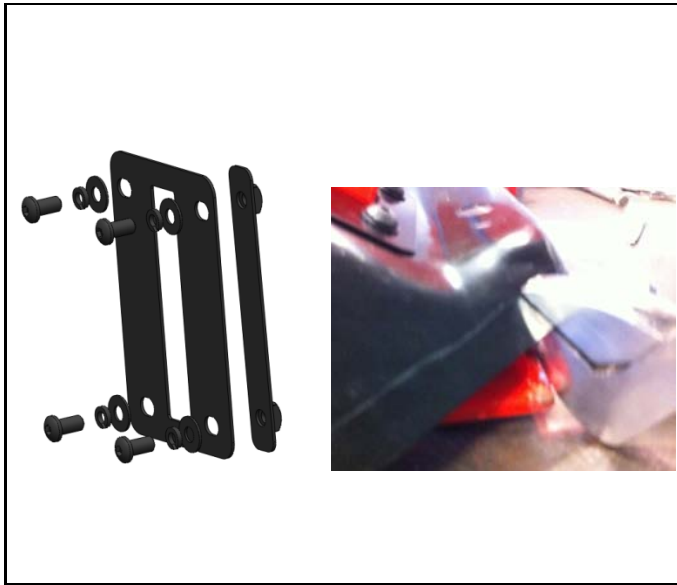
**TORQUE
5 BOLTS TO
SPECIFICATION**

7. All bolts torqued to specification on page 2.

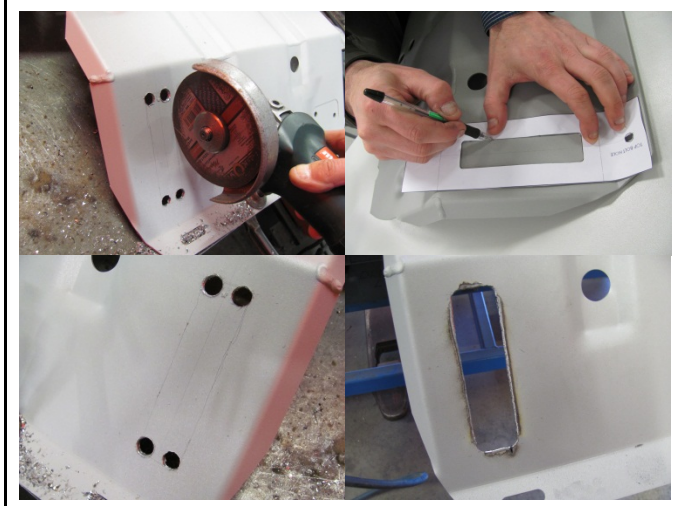


If under vehicle protection was removed in Step 1, skip to Step 14(a).

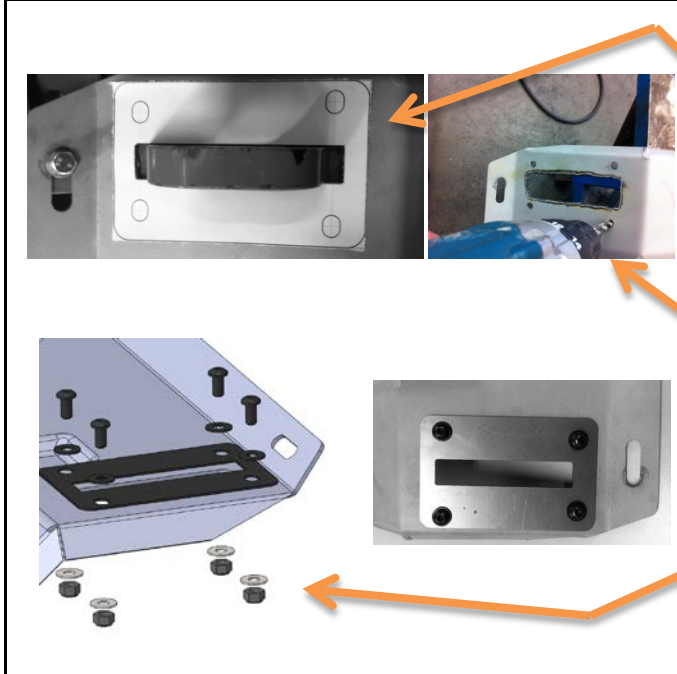
8. If the standard stone shield was removed during Step 1.
9. Cut the template (3788055) and attach to factory stone shield.
10. Use the template to drill the 9 mm holes and cut the front left corner of the stone shield as shown. Remove any sharp edges and paint with colour matched paint.



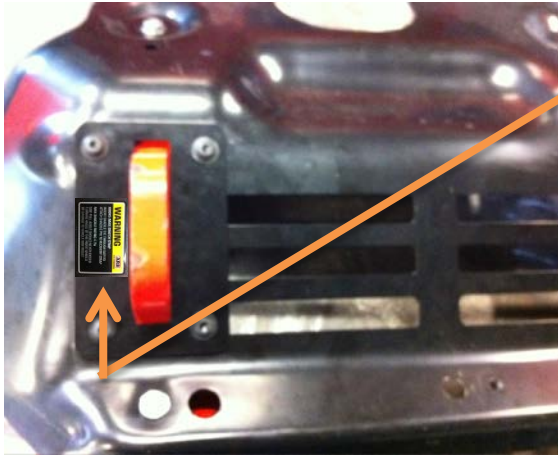
11. Install the stone shield cover plate to the outside of the stone shield with four M8 x 16 mm button head bolt, spring and flat washers and fit the clamp plate to the rear of the stone shield all finger tight only.
12. Use square pliers / adjustable wrench to fold the top of the stone shield until clearance from the top of the recovery point is achieved. Check top bolt hole is aligned.
13. Refit the stone shield in reverse to removal in *Step 1*.
14. Align cover plate to recovery point and torque bolts to specification on page 2.
Skip to page 6.



- 14(a). ***If a later model of UVP with the recovery point slot was removed in Step 1, skip to Step 22.***
15. Use the template (3788055) to mark out the sections to be removed and the drill hole centres.
16. Drill a 12 mm hole in each corner. Use a jigsaw or angle grinder to cut out the remaining material marked out by the template. Paint any bare metal to prevent rust.



17. Place the stone shield into position on the vehicle and hold into position finger tight only.
18. Place the cover plate over the recovery point checking that no cut material is visible.
19. Mark the centre of the slots & use tape to mark the position of the cover plate on the UVP.
20. Remove the UVP & drill a 9 mm hole in the centre of each slot.
21. Place an M8x16 mm button head bolt, flat washer and M8 Nyloc nut. Torque to specification.
22. Refit ARB UVP in reverse order to removal in *Step 1*.



23. If factory stone shield is fitted, attach warning label as shown.

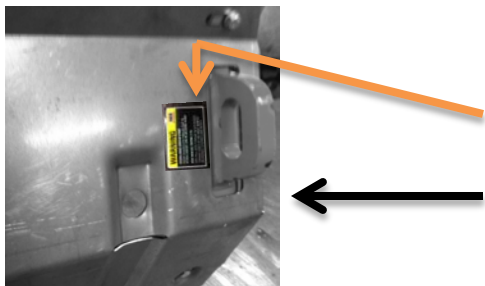
Factory Stone Shield shown.



24. If UVP is fitted, attach warning label as shown.

Under Vehicle Protection shown, sold separately.

Early model shown with cover plate fitted.



25. If late model UVP is fitted, attach warning label as shown.

Later model UVP with recovery point slot.



Final product shown with ARB under body protection kit, *sold separately.*