



# INSTALLATION INSTRUCTIONS WINCH MOUNTING PLATE FOR STOCK BUMPER

Part Number: 88140, 88418 FOR 8274

Application: Jeep JK 2012+

## GENERAL SAFETY PRECAUTIONS

Your safety, and the safety of others, is very important. To help you make informed decisions about safety, we have provided installation and operating instructions and other information on labels and in this guide. This information alerts you to potential hazards that could hurt you or others. It is not possible to warn you about all potential hazards associated with this product, you must use your own good judgment.

**CARELESS INSTALLATION AND OPERATION CAN RESULT IN SERIOUS INJURY OR EQUIPMENT DAMAGE. READ AND UNDERSTAND ALL SAFETY PRECAUTIONS AND OPERATING INSTRUCTIONS BEFORE INSTALLING AND OPERATING THIS PRODUCT.**

This guide identifies potential hazards and has important safety messages that help you and others avoid personal injury or death. **WARNING** and **CAUTION** are signal words that identify the level of hazard. These signal words mean:

**▲WARNING** signals a hazard that could cause serious injury or death, if you do not follow recommendations. **▲CAUTION** signals a hazard that may cause minor to moderate injury, if you do not follow recommendations.

This guide uses **NOTICE** to call attention to important mechanical information, and **Note:** to emphasize general information worthy of special attention.

## ▲ WARNING

Impact and Moving Parts Entanglement Hazard

**FAILURE TO OBSERVE THESE INSTRUCTIONS COULD LEAD TO SEVERE INJURY OR DEATH**

- Always use extreme caution when drilling on any vehicle. Make sure that all fuel lines, brake lines, electrical wires, and other objects are not punctured or damaged when / if drilling on the vehicle. Thoroughly inspect the area to be drilled (on both sides of material) prior to drilling, and relocate any objects that may be damaged. Failure to inspect the area to be drilled may result in vehicle damage, electrical shock, fire or personal injury.
- Always wear safety glasses when installing this kit. A drilling operation will cause flying metal chips. Flying chips can cause eye injury.
- Always use extreme caution when cutting and trimming during fitting.
- Always remove jewelry and wear eye protection.
- Never lean over battery while making connections.
- Always use appropriate and adequate care in lifting components into place.
- Always insure components will remain secure during installation and operation.
- Always tighten all nuts and bolts securely, per the installation and operation.
- Always perform regular inspections and maintenance on the winch, winch mount and related hardware.
- Always replace all worn or damaged parts before operating.
- Never operate this WARN product with damaged or missing parts.
- Never work under vehicle before properly securing vehicle.

Read installation and operating instructions thoroughly.

WARN INDUSTRIES, INC. 12900 S.E. Capps Road,  
Clackamas, OR USA 97015-8903, 1-503-722-1200, FAX: 1-503-722-3000  
Customer Service: 1-800-543-9276  
Dealer Locator Service: 1-800-910-1122  
International Sales/ Customer Service: 1-503-722-3008  
International Fax: 1-503-722-3005

## **⚠ CAUTION**

### **Moving Parts Entanglement Hazard**

**FAILURE TO OBSERVE THESE INSTRUCTIONS COULD LEAD TO MINOR OR MODERATE INJURY**

- **Always take time to fully read and understand the installation and Operations Guide included with this product.**
- **Part edges may be sharp!**

Read installation and operating instructions thoroughly.

## **NOTICE**

### **Equipment Damage**

- **Always refer to the Installation and Specification Guide, supplied in the winch kit, for all wiring schematics and specific details on how to wire this WARN product to your vehicle.**

Read installation and operating instructions thoroughly.

## **NOTES**

The Warn Elite Bumper for the Jeep JK will accept a large range of mid frame winches with up to 12,000 lb. capacities. The Bumper has been designed to accommodate the standard 4-1/2 x 10" feet down mounting pattern as well as the 4-1/2 x 6" short drum pattern. The Warn PowerPlant HD and HD can be installed using the offset mounting holes and included Offset Fairlead Plate.

## **BEFORE YOU BEGIN**

- The Elite Bumper is designed to accept a wide variety of mid frame winches. Standard 4-1/2 x 10", 4-1/2 x 6" short drum and 4-1/2 x 10" offset mounting holes are available. Some winches mounted in some locations may require sheet metal trimming. The Warn PowerPlant must be mounted in the offset position and will require trimming of the top of the Jeep bumper mounting plate. The Warn 9.5ti and 9.5cti mounted in the center position will require trimming of the plate but will require no trimming in the offset position.
- Models equipped with factory fog lamps will need to have the wires lengthened before installing in the outboard locations in the Elite Bumper. Additional wire and connectors are included in this kit as well as special brackets for installing factory fog lamps.
- 2012 Jeep JK's are equipped with a canister mounted to the inside of the driver side frame rail, behind the bumper. This must be relocated and the metal bracket trimmed before bumper installation. Instructions on how to do this are included.
- The Elite Bumper is not compatible with the factory skid plate. It will not be reinstalled after installation of the WARN Elite Bumper

## **TABLE OF CONTENTS**

Tools Required.....	page 2
Torque Specifications.....	page 2
Parts List.....	page 3
Installation.....	page 4-10
Maintenance and Care.....	page 10

## **TOOLS REQUIRED**

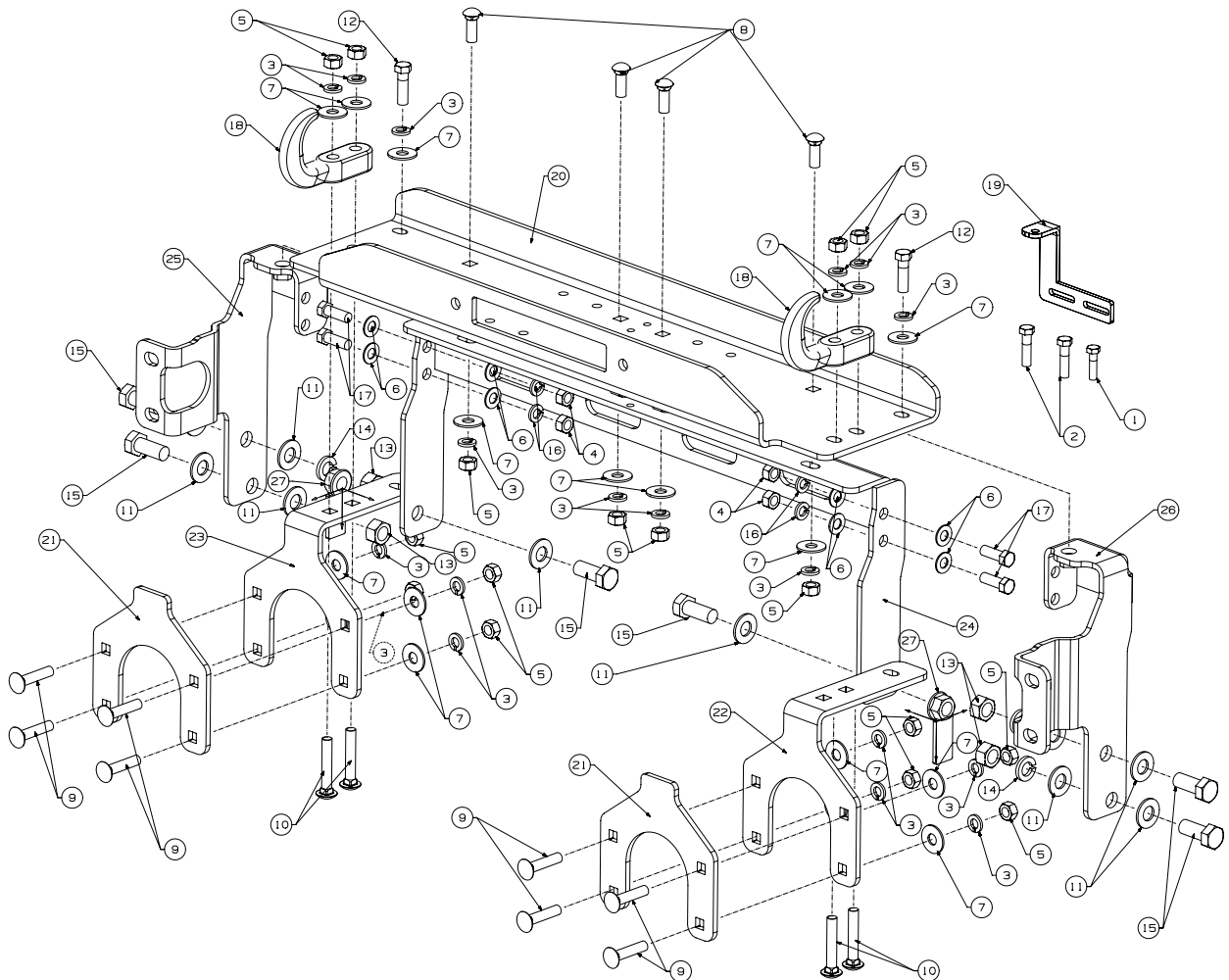
- Ratchet, extensions, universal
- Sockets: 10mm, 18mm, 7/16", 5/8", 11/16", 15/16"
- End Wrenches: 10mm, 3/16", 7/16", 5/8", 11/16"
- Phillips Screwdriver, metal cutting saw

## **TORQUE SPECIFICATIONS**

1/4	8 lb. ft. (10.8 N-m)
5/16	17 lb. ft. (12.5 N-m)
3/8	30 lb. ft. (40.7 N-m)
7/16	50 lb. ft. (67.8 N-m)
1/2	75 lb. ft. (101.7 N-m)

## PARTS LIST

Description	Qty	P/N
Hex Bolt 5/16-18 x 1 ¼ ZN PLT	1	2770
Hex Bolt 3/8-16 x 1 ½ ZN PLT	2	8160
Washer Lock 7/16 Black	18	18113
Hex Nut 7/16-14 ZN PLT	4	2583
Hex Nut 7/16-14 Black	16	18111
Washer 7/16 Flat ZN PLT	8	220026
Washer 7/16 Flat Wide Black	18	74636
Carriage bolt 7/16-14 x 1 ¼ Black	4	13617
Carriage Bolt 7/16-14 x 2 Black	8	80646
Carriage Bolt 7/16-14-2 ½ Black	4	74883
Washer 5/8 Flat ZN PLT	10	68959
Hex Bolt 7/16-14 x 1 ½ Black	2	18118
Hex Nut 5/8-11 ZN PLT	4	6821
Washer Lock 5/8 ZN PLT	4	6820
Hex Bolt 5/8-11 x 1 ½ ZN PLT	6	6819
Washer Lock 7/16 ZN PLT	4	2146
Hex Bolt 7/16-14 x 1 ¼ ZN PLT	4	1824
Tow Hook Black	2	13222
Solenoid Bracket	1	26368
Winch Plate JK Jeep	1	74015
Winch Plate JK Jeep - 8274 (not shown)	1	74023
Bracket Doublers Rail End	2	88413
Bracket RH Rail End	1	88312
Bracket LH Rail End	1	88313
Bracket Welded Inner Frame	1	88308
Bracket Rear RH Frame	1	88306
Bracket Rear LH Frame	1	88307
Weld nut plates	2	88035



## INSTALLATION INSTRUCTIONS

1. Remove skid plate by removing 6 plastic Phillips head fasteners, 4 across the bottom of the bumper and 1 behind each end of the blocker beam. Figures 2 and 3.

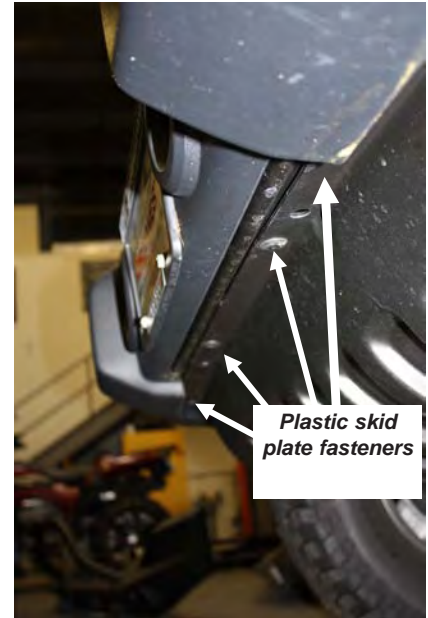


Figure 2

2. Unplug the factory fog lamps if equipped. Detach the wire harness from the bumper. Figure 4.



Figure 3

3. Remove the 8 nuts (4 each side) that secure the bumper to the frame ends. Access from behind the bumper.

4. Remove the trim panel from the top of the frame by removing the 2 plastic fasteners.



Figure 4

## INSTALLATION INSTRUCTIONS

5. Use a grinder or file to enlarge the slot in the factory canister bracket to match the frame hole behind it, about 5/8" diameter. Figure 5. Touch up raw edge with paint to prevent rust. Figure 6.

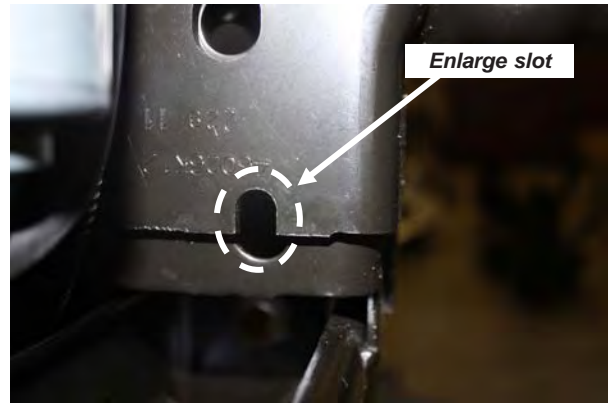


Figure 5



Figure 6

6. Place the inner frame bracket (24) into position between the frame rails as shown in figure 7.



Figure 7

7. Place the 5/8-11 welded nut plate (27) into position inside the frame rail and bolt the side supports of the inner frame bracket (24) to the side of the frame rail using 5/8-11 x 1 1/2 hex bolt (15) and 5/8 flat washer (11) as shown in figures 8 and 9.



Figure 8



## INSTALLATION INSTRUCTIONS



Figure 9

8. Attach the left and right hand rear frame brackets to the side of the frame rails. Use 5/8-11 x 1 1/2 hex bolts (15), 5/8 flat washer (11), 5/8 lock washer (14) and 5/8-11 hex nut (13). The hex nuts, flat washer and lock washer will go on the inside of the frame rail. The hex bolts and flat washer will go through the rear frame brackets and into the frame rail as shown in figures 10 and 11.



Figure 10



Figure 11

9. Attach the top of the left and right hand rear frame brackets (25 and 26) to the inner frame bracket (24). Use 7/16-14 x 1 1/4 hex bolts (17), 7/16 flat washer (6), 7/16 lock washer (16) and 7/16-14 hex nuts, see figure 12.



Figure 12

## **⚠ WARNING**



Drilling operations can cause flying chips. **WEAR SAFETY GOGGLES.** Flying chips can cause eye injury.

### 10. Prepare and Install bumper

It is necessary to trim the factory plastic bumper to allow for the main frame brackets to fit into the bumper.

Remove the steel portion of the bumper by removing the 8 bolts that fasten the steel bumper to the plastic. Save these bolts. Some vehicles may only have 4 bolts connecting the steel portion of the factory bumper to the plastic bumper.

If your vehicle does not have tow hook cutouts in the top of the bumper it is necessary to cut access holes in the top of the bumper. Place the plastic portion of the bumper on a flat working surface. Using a  $\frac{1}{4}$ " drill bit and drill motor, drill the corners of the formed area as shown in Figure 13.

Upon drilling the corners of the tow hook area, use a utility knife, skill saw or other cutting device to cut the plastic between the drilled holes as shown in Figure 14.



*Figure 13*



*Figure 14*

### 11. Remove the inner steel frame from the inside of the factory bumper, see figure 15 and 16.



*Figure 15*

## INSTALLATION INSTRUCTIONS

12. Assemble the rail end brackets (22 and 23) and the rail end doubler brackets (21). Use the 8, 7/16-14 x 2 black carriage bolts (9) for the front face of the rail end brackets, see figures xx and xx. There is a left and right bracket so make sure that the brackets are placed on the correct side. The driver side bracket, should have the square holes closer to the inside of the bracket, see figure 17 and 18.



Figure 16

13. Before placing the rail end brackets into the factory bumper shell make sure that the two 7/16-14 x 2 1/2 black carriage bolts (10) are placed into position in the rail end bracket, see figure 18 and 19.



Figure 17

14. Re-install the steel shell back inside the factory bumper, this will capture the rail end brackets into the factory bumper.



Figure 18



15. Install the front bumper assembly to the frame. Align the 8, 7/16-14 carriage bolts with the mounting holes on the front frame rails and slide the bumper into position. Attach on the back side using 7/16 flat washer (7), 7/16 lock washer (3) and 7/16-14 hex nut (5).



Figure 19

16. Place the winch plate (20) into position on the support brackets. Attach the rear corners of the winch mounting plate with 7/16-14 x 1 1/2 black hex bolt (12), 7/16 black lock washer (3), and 7/16 black flat washer (7). Place the tow hooks over the 7/16-14 black carriage bolts sticking up through the winch mounting plate and secure with 7/16 black flat washer (7), 7/16 black lock washer (3) and 7/16-14 black hex nut (5). Figure 20 and 21.

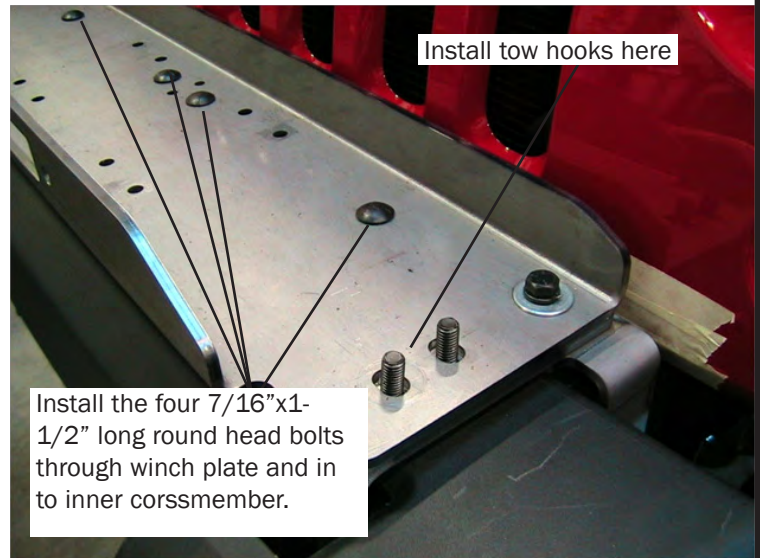


Figure 20

17. Attach the rear of the winch mounting plate (20) using 4 7/16-14 x 1 1/4 black carriage bolts (8), 7/16 black flat washer (7), 7/16 black lock washer (3) and 7/16-14 black hex nut (5). The back of the winch mounting plate will attach to the top of the inner frame bracket (24).

18. Make sure all the bumper and bracket hardware has been properly torqued.

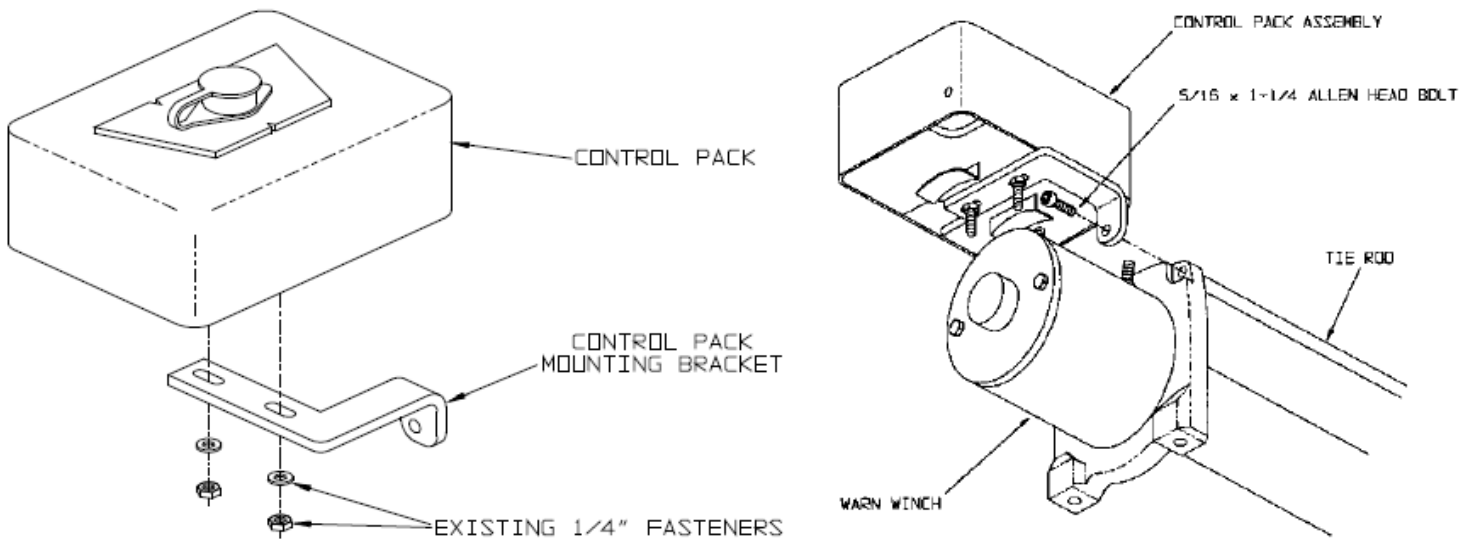
19. If you are installing a winch at time, do so now per the manual and hardware supplied with the winch.

20. Re-install the fog light wire loom to the frame locations. Re-install the front splash pan skid plate using the factory hardware. Plug the fog light wiring to the lights.

If installing solenoid bracket PN 26368 on the winch refer to the following diagrams:



Figure 21



**THE WINCH MOUNTING PLATE INSTALLATION IS NOW COMPLETE. PROCEED TO SECTION IV TITLED "MAINTENANCE/CARE".**

## MAINTENANCE / CARE

1. Inspect all parts on the winch, winch mount, and related hardware prior to each use. Replace all hardware that appears rusted or deformed.
2. Inspect all nuts and bolts on the winch, winch mount, and related hardware prior to each use. Tighten all nuts that appear to be loose. Stripped, fractured, or bent bolts or nuts need to be replaced.
3. Check all cables prior to use. Replace cables that look worn or frayed.
4. Check all moving or rotating parts. Remove debris that may inhibit the part from moving freely.

**CARELESS INSTALLATION AND OPERATION CAN RESULT IN SERIOUS INJURY OR EQUIPMENT DAMAGE. READ AND UNDERSTAND ALL SAFETY PRECAUTIONS AND OPERATING INSTRUCTIONS BEFORE INSTALLING AND OPERATING THIS PRODUCT.**

