



# INSTALLATION INSTRUCTIONS

## Trans4mer Gen II Mount System

Your safety, and the safety of others, is very important. To help you make informed decisions about safety, we have provided installation and operating instructions and other information on labels and in this guide. This information alerts you to potential hazards that could hurt you or others. It is not possible to warn you about all potential hazards associated with this product, you must use your own good judgment.

**CARELESS INSTALLATION AND OPERATION CAN RESULT IN SERIOUS INJURY OR EQUIPMENT DAMAGE.**

**READ AND UNDERSTAND ALL SAFETY PRECAUTIONS AND OPERATING INSTRUCTIONS BEFORE INSTALLING AND OPERATING THIS PRODUCT.**

This guide identifies potential hazards and has important safety messages that help you and others avoid personal injury or death. **WARNING** and **CAUTION** are signal words that identify the level of hazard. These signal words mean:

**▲ WARNING** signals a hazard that could cause serious injury or death, if you do not follow recommendations.

**▲ CAUTION** signals a hazard that may cause minor to moderate injury, if you do not follow recommendations.

This guide uses **NOTICE** to call attention to important mechanical information, and **Note**: to emphasize general information worthy of special attention.

### ▲ WARNING

**Failure to observe these instructions could lead to severe injury or death.**

- Always** remove jewelry and wear eye protection.
- Always** tighten all nuts and bolts securely, per the installation instructions.
- Never** use as trailer towing point. Severe injury or death may occur. Use as vehicle recovery point only.
- Always** insure components will remain secure during installation and operation.
- Never** use receiver or mounting kit as an attachment point when rigging a double line pull.

### ▲ CAUTION

**Failure to observe these instructions could lead to severe injury or death.**

- Always** use appropriate and adequate care in lifting components into place.

## BEFORE YOU BEGIN

- Read and understand these Installation Instructions.
- Refer to the Parts Lists below and to Figures A, B, and C for your specific mounting system to become familiar with the components and hardware in this kit.

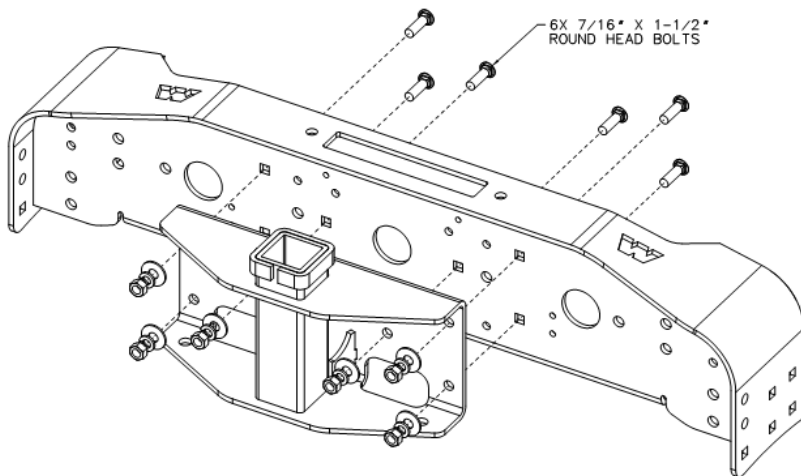
## I. PARTS LIST FOR 80149 TRANS4MER GEN II RECEIVER KIT

<u>Part Number.</u>	<u>Qty</u>	<u>Description</u>
79860	1	Trans4mer Gen II Receiver
80481	1	Hardware Kit
36631	1	Receiver Plug

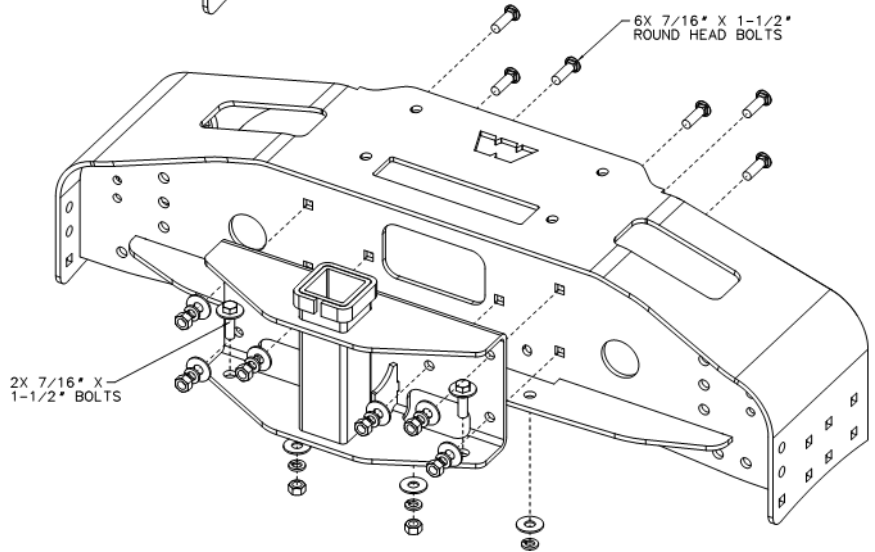
## II. TOOLS REQUIRED

- 11/16" Socket
- Ratchet

### III. INSTALLATION DIAGRAMS



*Figure 1: Mid Frame*



*Figure 2: Large Frame*

### IV. TORQUE SPECIFICATIONS

<u>Bolt Size</u>	<u>Torque</u>
7/16"-14	50 lb. ft. (67.8 N-m)

### V. INSTALLATION

1. Place receiver bracket under winch carrier and line up the holes. See Figure 1 for Mid Frame installation and Figure 2 for Large Frame installation. (For Large Frame installation you must first remove the stiffening plate bolted to the bottom of the winch carrier.)
2. Install the 6 round head bolts through the winch carrier and into the receiver. Install washer, lock washers and nuts onto the bolts. For large frame carriers install the two 7/16" x 1 1/2" long bolts through the back of the receiver and into the carrier. Install washers, lock washers and nuts.
3. Tighten all bolts to torque specified in section III of this document.

**⚠ WARNING**

**ALWAYS INSURE COMPONENTS WILL REMAIN SECURE DURING INSTALLATION AND OPERATION.**