



INSTALLATION INSTRUCTIONS

Warn Light Bar (Black, Stainless)

Part Numbers: 73745, 73753

For use with the Trans4mer mounting system.

Your safety, and the safety of others, is very important. To help you make informed decisions about safety, we have provided installation and operating instructions and other information on labels and in this guide. This information alerts you to potential hazards that could hurt you or others. It is not possible to warn you about all potential hazards associated with this product, you must use your own good judgment.

CARELESS INSTALLATION AND OPERATION CAN RESULT IN SERIOUS INJURY OR EQUIPMENT DAMAGE. READ AND UNDERSTAND ALL SAFETY PRECAUTIONS AND OPERATING INSTRUCTIONS BEFORE INSTALLING AND OPERATING THIS PRODUCT.

This guide identifies potential hazards and has important safety messages that help you and others avoid personal injury or death. **WARNING** and **CAUTION** are signal words that identify the level of hazard. These signal words mean:

▲WARNING signals a hazard that *could* cause serious injury or death, if you do not follow recommendations.

▲CAUTION signals a hazard that *may* cause minor to moderate injury, if you do not follow recommendations.

This guide uses **NOTICE** to call attention to important mechanical information, and **NOTE**: to emphasize general information worthy of special attention

▲ WARNING
INJURY HAZARD
Failure to observe these instructions could lead to severe injury or death.
<ul style="list-style-type: none"> <input type="checkbox"/> Always use extreme caution when drilling on any vehicle. Make sure that all fuel lines, brake lines, electrical wires, and other objects are not punctured or damaged when/if drilling on the vehicle. Thoroughly inspect the area to be drilled (on both sides of material) prior to drilling, and relocate any objects that may be damaged. Failure to inspect the area to be drilled may result in vehicle damage, electrical shock, fire or personal injury. <input type="checkbox"/> Always wear safety glasses when installing this kit. A drilling operation will cause flying metal chips. Flying chips can cause eye injury. <input type="checkbox"/> Always remove jewelry and wear eye protection. <input type="checkbox"/> Always insure components will remain secure during installation and operation. <input type="checkbox"/> Always tighten all nuts and bolts securely, per the installation instructions..

NOTE: PLEASE READ THESE INSTRUCTIONS THOROUGHLY BEFORE STARTING THE INSTALLATION OF THIS KIT. MINOR MODIFICATIONS MAY BE REQUIRED DUE TO VARIATIONS BETWEEN VEHICLES. STAINLESS STEEL KITS WILL BE SLIGHTLY DIFFERENT AND MAY CONTAIN DIFFERENT HARDWARE.

PARTS LIST, BLACK

<u>PART NO.</u>	<u>QUANTITY</u>	<u>DESCRIPTION</u>
29135	2	3/8-16X1 BUTTON SOC HD,BLK
73748	2	WASHER, BLACK, ELLIPSE
73749	2	1/4-20X1 SOC SET SCREW,BLK
69218	1	PERMATEX BLUE THREAD LOCKER
73746	1	LIGHT BAR, ANGLED, BLK

PARTS LIST, SS

<u>PART NO.</u>	<u>QUANTITY</u>	<u>DESCRIPTION</u>
60593	2	3/8-16X1-1/4 BUTTON SOC HD,SS
73759	2	1/4-20X1 SOC SET SCREW,SS
69218	1	PERMATEX BLUE THREAD LOCKER
73754	1	LIGHT BAR, ANGLED, SS

TORQUE SPECIFICATIOIOS

3/8 INCH	30 lb. ft. (40.7 NM)
1/4 INCH	Flush to Side Member w/thread locker.

TOOLS REQUIRED

7/32" Allen wrench
1/8" Drill bit
Drill

1/8" Allen wrench
1/4" Drill bit
Level

1. Before installing the light bar, be sure that any existing tubes and winch carrier brackets are loosened so the Light Bar can be easily inserted between the Side Members of the Trans4mer.
2. Remove existing Grille Guard Tube. On some light bar configurations the 1.5" Grille Guard Tube will need to be installed in the upper bar location to clear some lights.
3. If your Trans4mer Side Members are pre-drilled for for the Light Bar (model year 2007 and later kits), proceed to step 7.

4. Using a level, draw a line on the side member parallel to the ground, extending from the center of the middle Grille-Guard mounting hole, approx 1" towards the rear of the vehicle.
On this line either measure and mark a spot .41" from the center of the Grille-Guard mounting hole toward the rear of the vehicle. **Figure 1**

-OR-

Use a black, elliptical washer as a template. Align it with the 3/8" Grille Guard mounting hole and the horizontal line. Mark through the center of the smaller hole.

NOTE: Trans4mers that use reinforcing plates for the Brush Guards only require holes in the Side Members. The reinforcing plates will cover the .41" holes and hardware.



Figure 1

5. Drill a 1/8" pilot hole on your mark. **Figure 2**



Figure 2

6. Drill 1/4" hole through the pilot hole. **Figure 3**

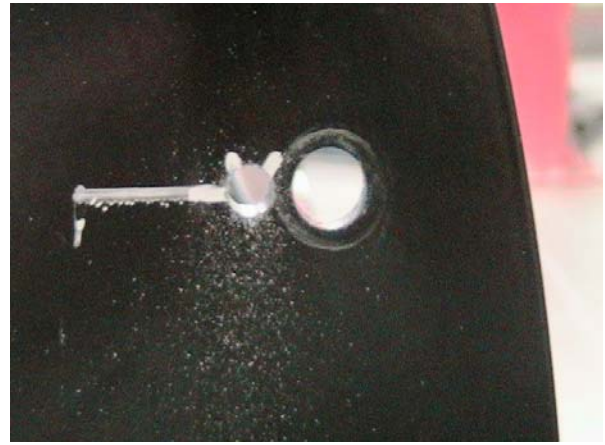


Figure 3

7. Apply thread locker to the 1/4" set screw, line up Light Bar between Side Member and thread set screw through Side Member into the Light Bar. For black Light Bar kits, be sure to place a black nylon elliptical washer between Side Member and Light Bar. Nylon washers are not used in stainless kits. Thread set screws into Light Bar until they are flush with the outer surface of the Side Member. **Figure 4**
8. Thread 3/8" cap screws through Side Member, and nylon washer (for black kits), into the Light Bar. Tighten fasteners to the specified torque. It may be necessary to screw the set screws farther in as the cap screws are tightened.



Figure 4



Figure 5

9. Install lights according to the light mounting instructions.

Warn Industries

Stainless Steel Truck Accessories

What to expect:

Polished stainless steel combines the beauty of a chrome-like appearance with extreme durability and corrosion resistance. With a minimum amount of care, the appearance will last almost indefinitely. Unlike platings or coatings, there is nothing to peel off or wear away that would allow corrosion underneath.

The actual appearance may not be exactly like new chrome in either the degree of luster or color. There may be fine polishing lines visible up close and small differences between mating parts of an assembly. A grille guard, for instance, may have small differences between the round tubing and the flat plate. The backside of a part may not be as highly polished as the front. However, part of the beauty and appeal of stainless actually lies in the smooth “hand-worked” appearance.

There also is a possibility that small rust spots can appear on stainless products. They are usually due to minor iron contamination on the surface as a result of normal manufacturing and handling processes. This minor rust, if it occurs at all, is easy to remove and will not tend to spread.

Recommended care:

Regular washing with fresh water and mild car wash detergents followed by rinsing and drying with a soft towel is the best minimum care. Beyond that, any cleaner/wax recommended for automotive finishes will work well to remove minor stains and scuffs, enhance the shine and provide protection. Always use clean soft cotton cloths. In most cases, this will be all that is required for many years. For more serious blemishes or a rust spot, use a cream metal polish recommended for stainless, aluminum, etc. Try to rub in the direction of the original polishing lines.

Ultimately, any stainless part can be restored to a brilliant shine with power buffing processes.

Caution:

Do not use steel wool or any type of metal scraper. Do not use “Scotch Brite” pads or abrasive powdered cleaners. Do not try to clean with muriatic acid or any other acid.

Stainless Fasteners

Stainless steel fasteners are included in many of the stainless kits. These fasteners provide similar corrosion resistance and appearance as the rest of the kit. However, stainless fasteners are prone to galling when installed in similar stainless material. It is a good idea to apply a small amount of anti-seize compound to the threads when installing them. Care should also be taken when tightening the fasteners to prevent rounding or deforming the corners of the bolts. Make sure the wrenches are the correct size and fit properly. In the case of socket heads, the wrench should have sharp, un-worn edges. With a few precautions during assembly the products should provide years of service.