



# INSTALLATION INSTRUCTIONS

## JEEP TJ ROCK SLIDERS

Part Number: 71500

Application: '03-Newer Jeep TJ

Your safety, and the safety of others, is very important. To help you make informed decisions about safety, we have provided installation and operating instructions and other information on labels and in this guide. This information alerts you to potential hazards that could hurt you or others. It is not possible to warn you about all potential hazards associated with this product, you must use your own good judgment.

**CARELESS INSTALLATION AND OPERATION CAN RESULT IN SERIOUS INJURY OR EQUIPMENT DAMAGE. READ AND UNDERSTAND ALL SAFETY PRECAUTIONS AND OPERATING INSTRUCTIONS BEFORE INSTALLING AND OPERATING THIS PRODUCT.**

This guide identifies potential hazards and has important safety messages that help you and others avoid personal injury or death. **WARNING** and **CAUTION** are signal words that identify the level of hazard. These signal words mean:

**WARNING** signals a hazard that could cause serious injury or death, if you do not follow recommendations.

**CAUTION** signals a hazard that may cause minor to moderate injury, if you do not follow recommendations.

This guide uses **NOTICE** to call attention to important mechanical information, and **Note**: to emphasize general information worthy of special attention.

### **WARNING**

#### **INJURY HAZARD**

**Failure to observe these instructions could lead to severe injury or death.**

- Always** use extreme caution when drilling on any vehicle. Make sure that all fuel lines, brake lines, electrical wires, and other objects are not punctured or damaged when/if drilling on the vehicle. Thoroughly inspect the area to be drilled (on both sides of material) prior to drilling, and relocate any objects that may be damaged. Failure to inspect the area to be drilled may result in vehicle damage, electrical shock, fire or personal injury.
- Always** wear safety glasses when installing this kit. A drilling operation will cause flying metal chips. Flying chips can cause eye injury.
- Always** use extreme caution when cutting and trimming during fitting.
- Always** remove jewelry and wear eye protection.
- Always** use appropriate and adequate care in lifting components into place.
- Always** insure components will remain secure during installation and operation.
- Always** tighten all nuts and bolts securely, per the installation instructions.
- Always** replace all worn or damaged parts before operating.
- Never** operate this WARN product with damaged or missing parts.

**NOTE: This installation requires drilling. Holes will need to be drilled through the side and bottom floor of the vehicle body.**

#### **General Information:**

- Fits all 03-newer Jeep TJ Wranglers
- Warn Rock Sliders will not fit with other aftermarket side body parts
- Factory steps will need to be removed to allow for clearance of the rock slider

#### **I. PARTS LIST**

<u>Part Number</u>	<u>Qty</u>	<u>Description</u>
71501	1	ROCK SLIDER, LH
71502	1	ROCK SLIDER, RH
71503	1	PARTS PACK

## II. TOOLS REQUIRED

9/16 WRENCH  
¼ ALLEN HEAD SOCKET  
9/16 SOCKET  
RACHET  
CENTER PUNCH

DRILL MOTOR  
1-1/4" HOLE SAW  
1/8 INCH DRILL BIT  
3/8 INCH DRILL BIT  
TORX SOCKETS

## III. TORQUE SPECIFICATIONS

3/8 35 lb. ft. (47.5 N-m)

## IV. INSTALLATION

1. Thoroughly clean both sides of the vehicle under the doors. Remove any factory or aftermarket steps or side plates.
2. Using a tape measure and pencil, lightly place a couple of marks on the side of the vehicle, 5.75" up from the bottom edge of the body. **Note:** This will be where the top of the rock slider should be located once installed.
3. Carefully place one of the rock sliders on the side of the vehicle, W cutout toward the rear fender flare. Position the rock slider vertically by using the marks from the previous step. Align the rock slider front to back using the fender flares.

**Note:** Due to the wide variety of fender flares there may be slight gaps between the ends of the rock slider and the flares. Position the rock slider so that any gap is equal front and back. The fender flares can be loosened and repositioned later. The vertical position is also dependent to the fender flares. If the fender flares do not allow the rock slider to be positioned to the 5.75" vertical marks, loosen the fender flares and move them slightly to allow the rock slider to be positioned down to the 5.75" measurement. **See Figure 1.**

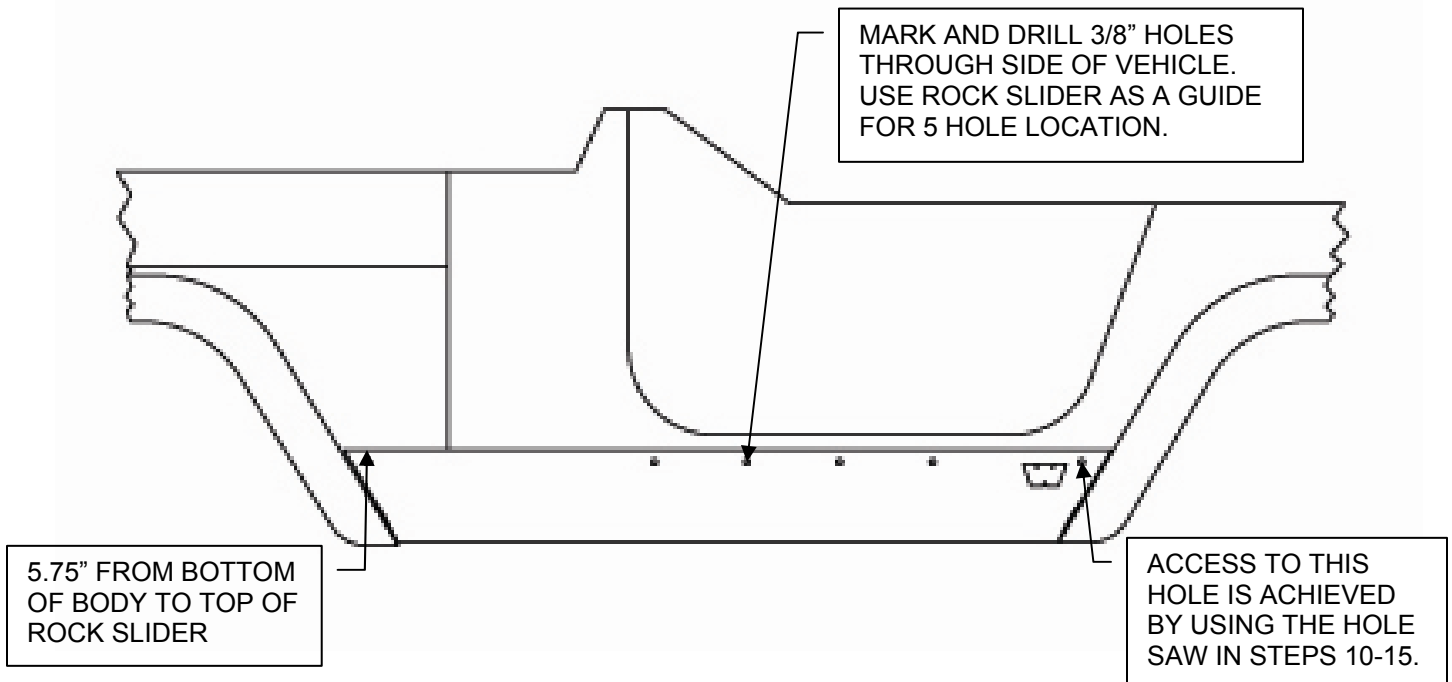
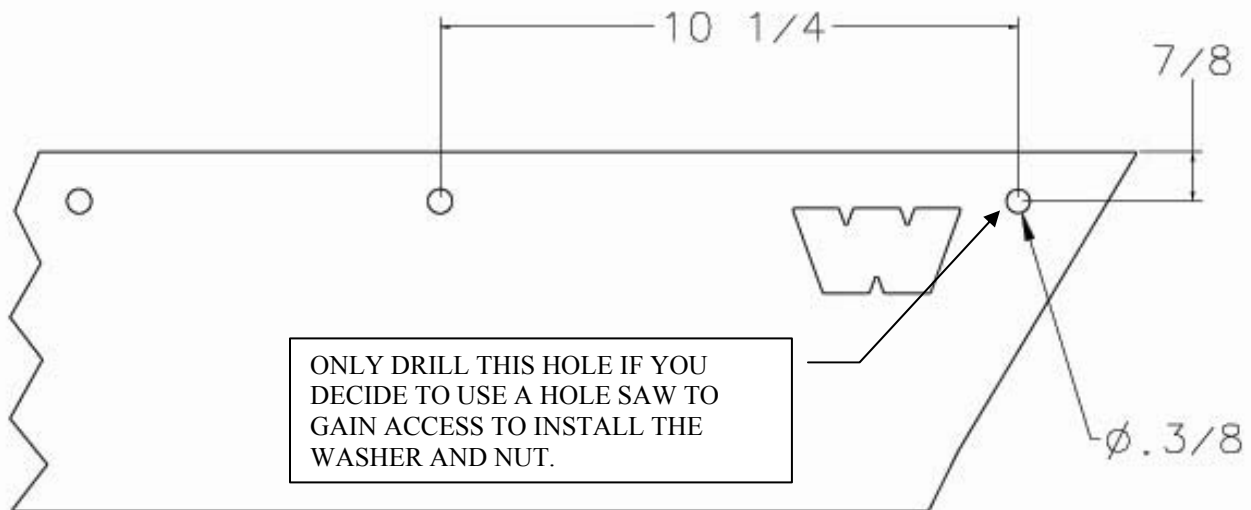


FIGURE 1

4. Once the rock slider is positioned, use the hole in the rock slider as a guide and mark the 5 holes on the Jeep body. You will notice that the rear most hole in the rock slider (see Figure 2) is not cut out. In order to use this hole you must be willing to use a hole saw on an inner body panel to gain access to install the nut and washer. Supplied in this manual are pictures and a template to help this process. If you decide you want to use this rear most hole, a center punch has been used to mark the back side of each rock slider to give you an exact location to drill the rear most 3/8" hole in the rock slider.
5. If you decided to use the rear most hole, carefully lay the rock slider on a bench and use the center punch mark on the back side of the rock slider to drill a 3/8" hole. Lay the rock slider on some type of soft surface to prevent scratches. The center of this hole should be 7/8" down from the top edge and 10 1/4" from the next hole forward. Drill a pilot hole through the rock slider using the center punch as a guide. Then drill a 3/8" hole through the rock slider. **See Figure 2.**



**FIGURE 2**

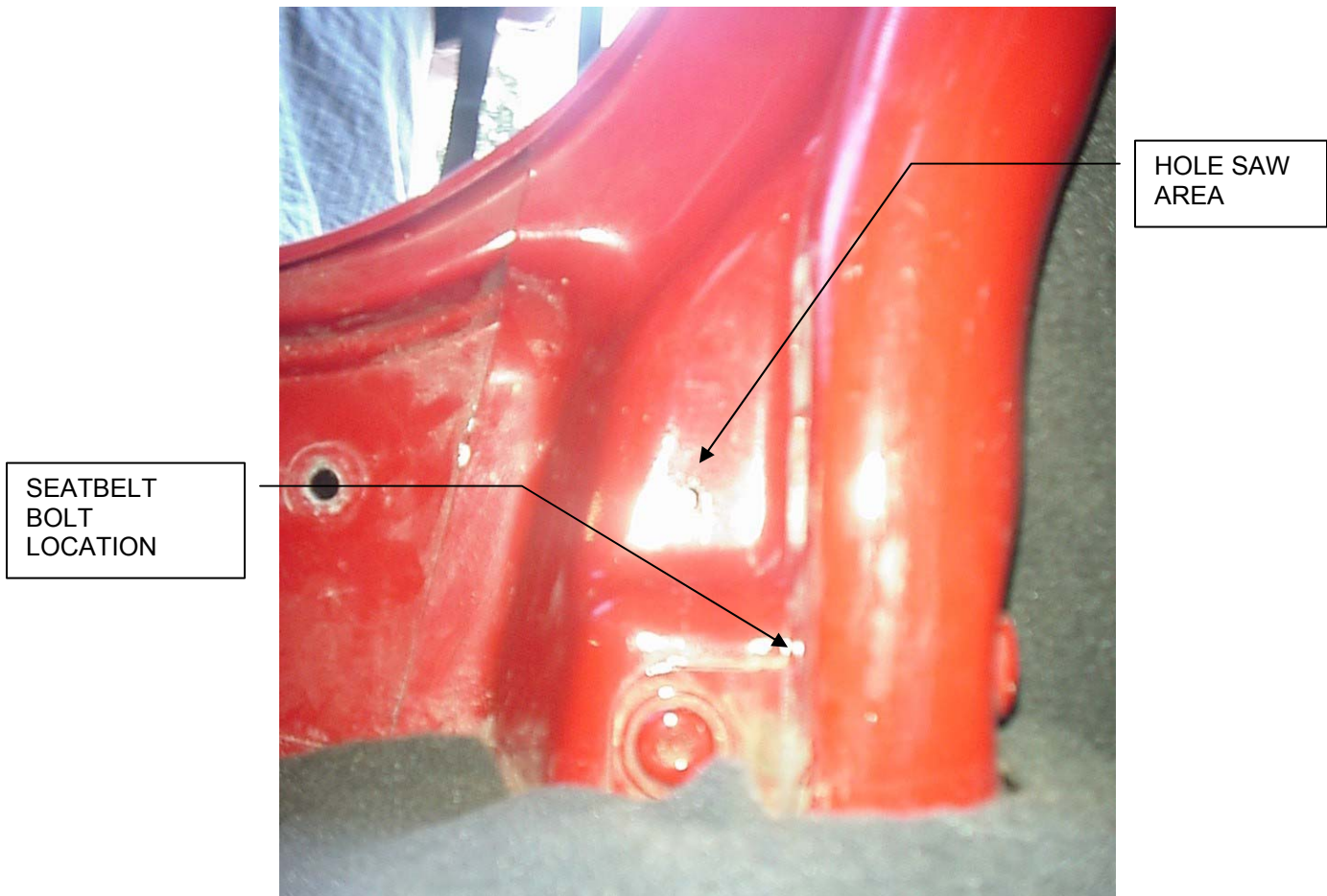


**WARNING**



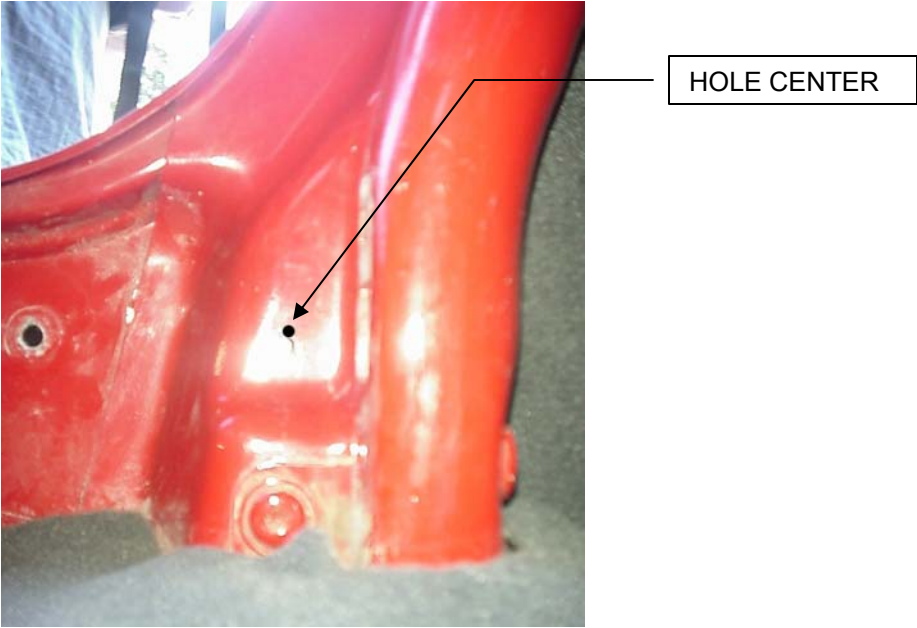
Drilling operations can cause flying chips. **WEAR SAFETY GOGGLES.** Flying chips can cause eye injury.

6. Before drilling any holes in the body of the Jeep it is very important to check for any wiring and carpet that may be in the hole locations. If there are any wires or carpet in these locations, temporarily move them out of the way.
7. Using the 5 marked hole locations, center punch each hole to ensure proper centering of the drill bit. Drill a small pilot hole using the center punch. Then drill each hole to 3/8". Clean any drill chips off the side of the vehicle.
8. Once the side holes are drilled and cleaned, place the rock slider back on the side of the vehicle. Using the supplied 3/8" black button head bolts, insert the bolts through the rock slider and the side of the vehicle. Place a 3/8" flat washer and lock nut on each bolt and torque to 30-36 ft/lbs. Re-tighten the fender flares if they were loosened.
9. Repeat steps 2 through 8 for the opposite side of the vehicle.
10. It is now necessary to hole saw an inner panel to gain access for the rear most hole. Remove the seat belt from the bottom of the roll bar. **See Figure 3.**



**FIGURE 3**

11. Once the seat belt is removed from the bottom of the roll bar, use the template supplied to mark the hole center for the hole saw. **See Figure 4.**



**FIGURE 4**

12. Using the rear most hole in the rock slider (the one you drilled), drill an 1/8" hole through the outer body skin and the inner body skin. Take special care to drill the hole straight. This 1/8" hole should be very close to the mark that you made using the template in step 11. **See Figure 5.**



**FIGURE 5**

13. Using the 1/8" hole as your center, drill the inner panel with an 1-1/4" hole saw. See Figure 6.



**FIGURE 6**

14. Using the 3/8" hole in the rock slider as your guide, drill the out body skin with a 3/8" bit. See Figure 7.



**Figure 7**

15. Once the 3/8" hole and the access hole are drilled, installed the 3/8 black button head bolts, insert the bolts through the rock slider and the side of the vehicle. Place a 3/8" flat washer and lock nut on each bolt and torque to 30-36 ft/lbs.
16. Clean all drill chips from the seat belt area and install the seat belt to the roll bar. Torque the factory Torx head bolt to 55 ft/lbs.
17. On the inside of the vehicle, pull the carpet up and away from the doorsill on both sides of the vehicle. Check for any wiring that may be under the carpet and move it out of the way temporarily. Using a drill and 3/8" bit, drill the three bottom holes on each side, using the bottom of the rock slider as a guide. Be careful not to drill into the carpet or any wiring that may be present.
18. Install the supplied spacer tubes between the rock slider and the floor. The two short spacer tubes are located in the front hole locations, one on each side of the vehicle. The four long spacer tubes are located in the middle and rear positions on both sides. **Note:** Due to variations in vehicle manufacturing, it may be necessary to place a washer on the spacer tube if there is an excessive gap.
19. Using the supplied hardware, insert the 3/8" x 2-1/4" bolts with a flat washer in the front hole locations. Install a 3/8" flat washer and 3/8" lock nut on each bolt. Insert the 3/8" x 2-3/4" bolts with a flat washer in the middle and rear locations. Install a 3/8" flat washer and 3/8" lock nut on each bolt. It is up to the installer if the bolts should be going up or down. Torque the 3/8" bolts to 30-36 ft/lbs.
20. Clean all drill chips and place any moved carpet or wiring back to its original position.





