



# INSTALLATION INSTRUCTIONS

## Trans4mer Grille Guard/Winch Mount Kit 60036 (Black) & 60037 (Chrome) For Chevrolet Silverado 3/4 Ton Trucks (Not suitable for Winches larger than 12,000 lbs.)

As you read these instructions, you may see **NOTES**, **CAUTIONS** and **WARNINGS**. Each message has a specific purpose. **NOTES** are additional information to help you complete a procedure. **CAUTIONS** are safety messages that indicate a potentially hazardous situation which, if not avoided, may result in minor or moderate injury. A **CAUTION** may also be used to alert against unsafe practice. **WARNINGS** are safety messages that indicate a potentially hazardous situation, which, if not avoided could result in serious injury. **CAUTIONS** and **WARNINGS** identify the hazard, indicate how to avoid the hazard, and advise of the probable consequence of not avoiding the hazard. **PLEASE WORK SAFELY!**

**NOTE:** This installation requires hole drilling. Make sure you have a drill motor and a sharp 7/16" drill bit available. Wear safety goggles.

### PARTS LIST

PART NO.	QUANTITY	DESCRIPTION
39830	2	Side Member, Black
or 39831	2	Side Member, Chrome
29365	1	Tube, 1-1/2", Black
or 29398	1	Tube, 1-1/2", Chrome
29366	1	Tube, 2-1/2", Black
or 29399	1	Tube, 2-1/2", Chrome
39824	1	Frame Extension, RH
39825	1	Frame Extension, LH
39829	2	Support Plate
38782	4	Clamping Strap
60269	1	Brace Assembly, RH
60270	1	Brace Assembly, LH
39875	2	Strap Assembly
39871	2	Spacer
38492	2	Bracket Assembly
13222	2	Tow Hook, Black
or 13223	2	Tow Hook, Chrome
34074	1	Sealant, Silicone

**Driver's side brace assembly**



**Clamping straps**



**Bracket assembly**



## TORQUE SPECIFICATIONS

### BOLT SIZE

3/8 inch  
7/16 inch  
1/2 inch

### TORQUE

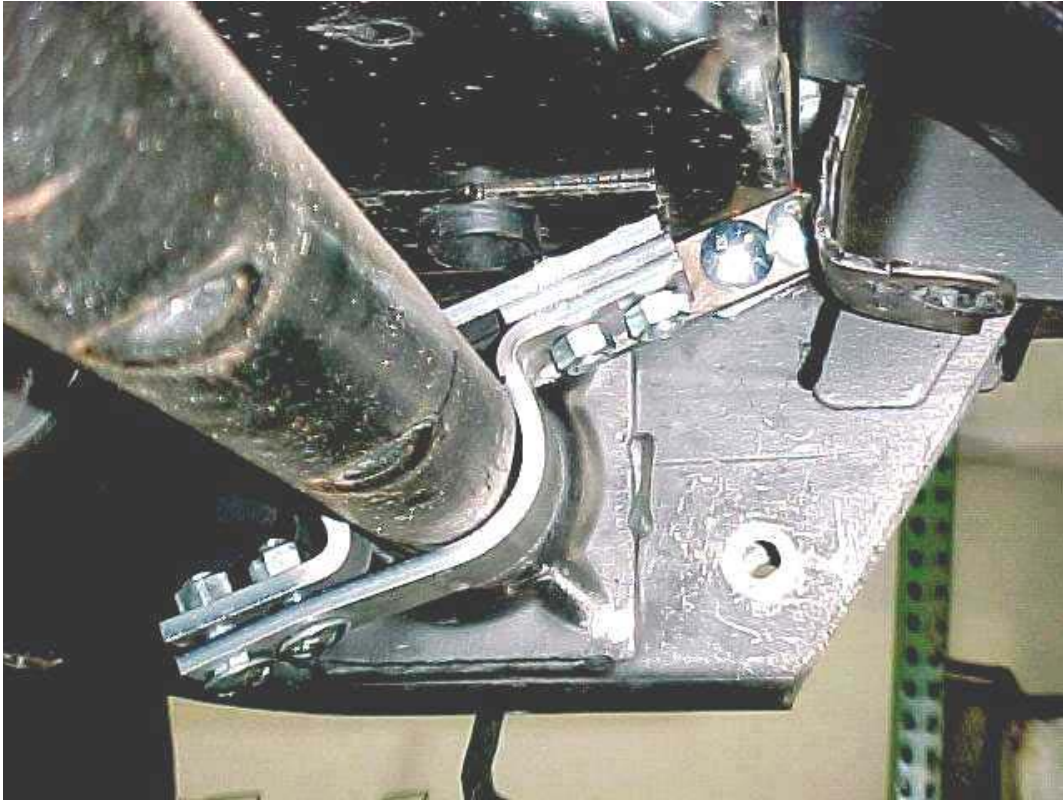
30 lb. ft (40.7 N-m)  
50 lb. ft. (67.8 N-m)  
75 lb. ft. (101.7 N-m)

**This WARN Trans4mer system** can be customized to give your Chevy Silverado a wide variety of looks, front-end protection and winch mounting capability. The system starts with this strong two-tube grille guard that attaches to the truck's frame with brackets designed to handle up to a 12,000 lb winch. It is durable and good looking as a stand-alone grille guard, but can be easily upgraded with some great options! You can add a third large size tube (light bar) that adds even more protection and includes tabs for mounting auxiliary lights. The tubes can be mounted in a variety of positions to achieve the look and function that you desire. You can mount a winch carrier bracket that provides a permanent mount for a Warn winch. You may also add a receiver bracket that will handle the Warn multi-mount winch system, a draw bar or any other accessory that fits the standard 2 inch receiver tube. Finally, brush guards that protect the headlights and front corners of the truck can be easily added to any of the options above.

**NOTE: Follow the instructions step by step for fastest installation. Do not securely tighten fasteners until directed to do so.**

1. Remove the grille and bumper. The grille must be removed first to gain access to the bumper bolts. These are easy to remove if the following procedure is followed:
  - a. Open the hood. Remove the four plastic fasteners that attach the plastic shroud to the top of the grille. Pry up the center pin with a screwdriver, then pry out the collar.
  - b. Remove the bolt just to right of the latch (10mm head).
  - c. Locate the four phillips head plastic fasteners just inboard of the lights. Gently turn  $\frac{1}{4}$  turn counterclockwise while pulling out on the grille to release. Give a sharp pull at extreme outer ends of grille to release the clips. Remove grille.
  - d. Unplug the wiring from the backside of the fog lights, if so equipped.
  - e. Remove the bolts from the outer bumper braces just forward of the wheels (15mm head).
  - f. Remove the four remaining bumper bolts (18mm head) and remove bumper.
2. Remove the plastic splash pan/air deflector that's below the engine.
3. Move the brace assemblies into position (The large rectangular tabs should be positioned inside the bumper perches.). **See photo 2.** Attach the bracket assemblies to the brace assemblies. Move the clamping straps into position and attach them to the bracket assemblies. **See photo 1. Leave all fasteners hand-tight.**

**PHOTO 1 – clamping straps and bracket assembly**



**PHOTO 2 – brace assembly (NOTE: use shim washer (unplated) below the spacer to set the elevation. The shim represents the material thickness of the bumper.)**





- Once the brace assemblies are in position, (with the fasteners installed at the top of the bumper perches) drill completely through the inside wall of the bumper perches and the large rectangular tabs of the brace assemblies. **Drill two holes at each bumper perch. Layout the holes horizontally, and far enough apart so that the fasteners will not interfere with each other.** Start with a pilot hole, then drill for the 7/16" fasteners.



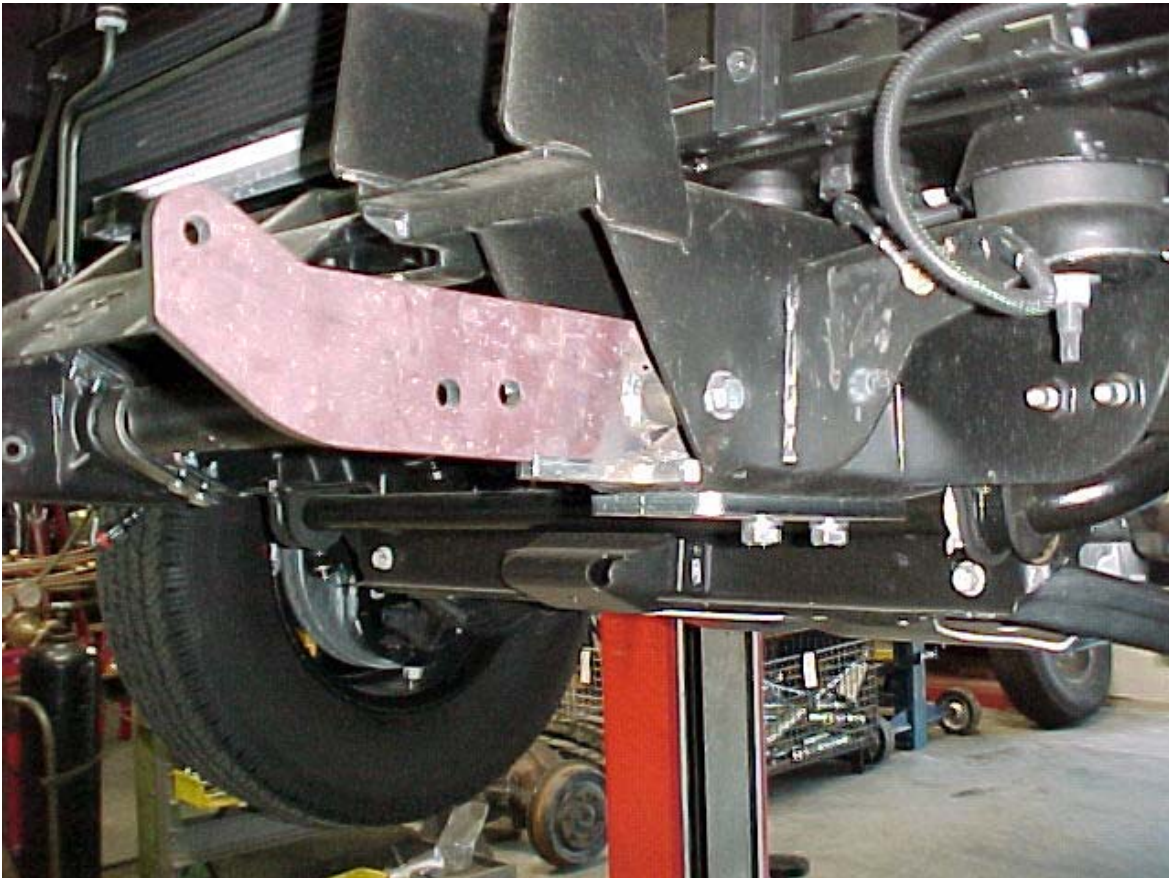
### **WARNING**



Drilling operations can cause flying metal chips. **WEAR SAFETY GOGGLES.**  
Flying metal chips can cause eye injury.

- Attach the brace assemblies to the bumper perches. Use 7/16 x 1-1/4 inch bolts, lock washers and nuts. **Securely tighten the fasteners.**
- Remove the fasteners that were previously installed at the top of the bumper perches. Remove the spacers and shims.
- Remove the factory tow hooks and install the frame extensions and support plates in their place. **See photo 3.** The frame extensions mount inside the frame rails. The support plates mount to the bottom of the frame rails. **Measure from the outside edge of one frame extension to the outside edge of the other. This should be approximately 32 inches. If not, swap the frame extensions from one side to the other. Leave the fasteners hand-tight.**

**PHOTO 3 – frame extension and support plate**



8. Install the bumper. Position the spacers between the brace assemblies and bumper tabs. Use the provided fasteners to attach the components to the bumper perches. **Leave the fasteners hand-tight. NOTE: There is no trimming of plastic required for bumper installation.** Remember to plug in the wiring for the fog lights.
9. Attach the side members and provided tow hooks to the frame extensions. Attach the 2-1/2 inch tube to the top of the side members. Use the plastic washers between the side members and the ends of the tube. **Leave the fasteners hand-tight.**
10. If you are installing either a winch carrier or front receiver, install it now. **Leave the fasteners hand-tight.** If you have installed the winch carrier, install the winch now. See the winch installation instructions.
11. Attach the 1-1/2 inch tube to the side members. **SECURELY TIGHTEN THESE FASTENERS AS WELL AS THE ONES HOLDING THE 2-1/2 IN TUBE AND WINCH CARRIER IN PLACE.**
12. **SECURELY TIGHTEN THE FASTENERS HOLDING THE SIDE MEMBERS TO THE FRAME EXTENSIONS. SECURELY TIGHTEN THE FASTENERS HOLDING THE FRAME EXTENSIONS TO THE FRAME.**
13. Remove the fasteners from the top of the bumper perches, and attach the strap assemblies. Place the shim washers between the brace assemblies and strap assemblies. Use the plated 1/2 inch washers on top of the strap assemblies. Position the strap assemblies so that they are flush with the side members. **See photo 4. SECURELY TIGHTEN THE FASTENERS.**

**PHOTO 4 – strap assembly**



14. Use the holes in the ends of the strap assemblies to mark and drill the side members. Drill for the 7/16 inch socket head fasteners. **Seal the drilled hole with the supplied Silicone Sealant.**

15. Attach the strap assemblies to the side members. **SECURELY TIGHTEN THE FASTENERS.**
16. Go back to the brace assemblies, bracket assemblies and clamping straps. **SECURELY TIGHTEN ALL FASTENERS.**
17. Install the grille and attach the plastic shroud at the top of the grille. Install the plastic splash pan/air deflector.

**FIGURE 1 – winch battery cable connection to side terminal battery**

