



INSTALLATION INSTRUCTIONS

MID-FRAME WIRE ROPE TENSIONER KIT

Wire rope tension plate can be installed to either of the two tie rods on the winch or hoist. Tensioner works equally well in either position.

1. Remove the two capscrews holding one tie rod and slip tie rod through the tensioner kit parts as shown in **FIGURE 1**. Be sure to place the spacer on the side of the drum to which the wire rope attaches.

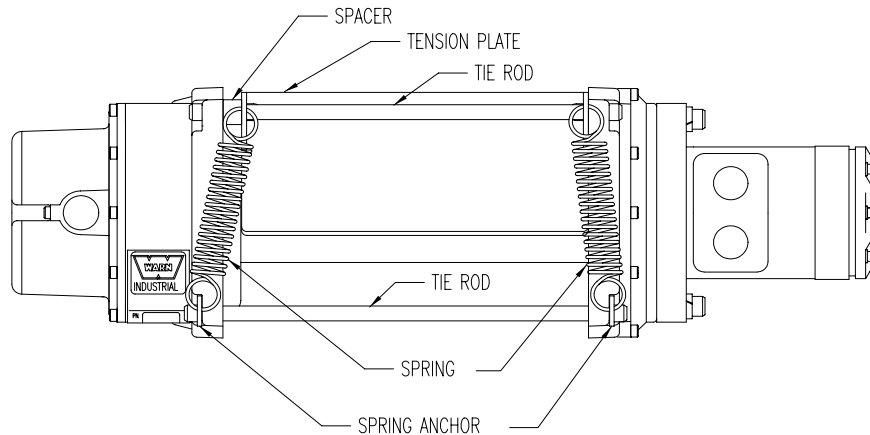


FIGURE 1

2. Replace the tie rod and capscrews and torque to 50-60 Lb.-in. (5.6-6.8 N•m).
3. Remove the two capscrews on the other tie rod. Leave tie rod in place, position spring anchors between capscrews and drum supports as shown in **FIGURE 2**. Torque capscrews to 50-60 Lb.-in. (5.6-6.8 N•m).

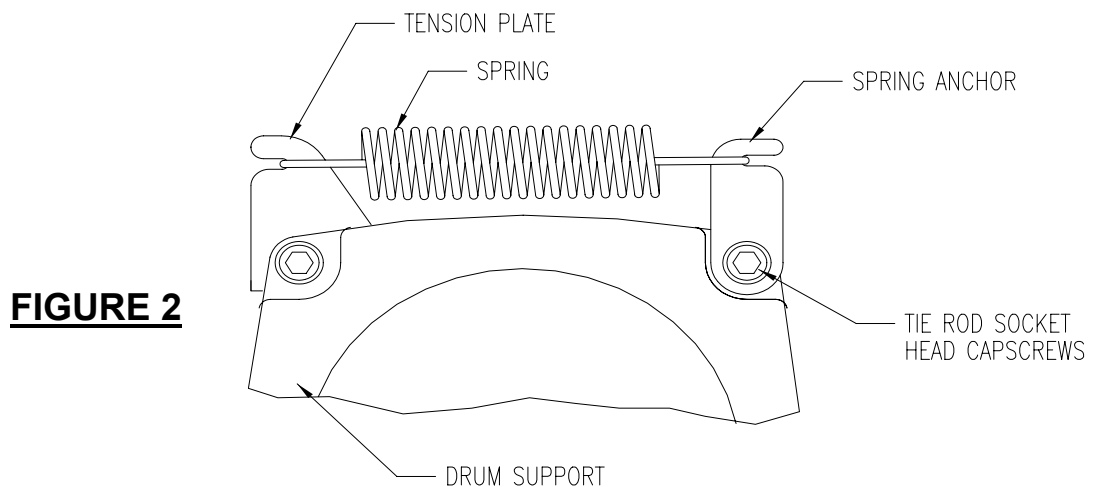


FIGURE 2

4. Connect springs over hooks on the tension plate and spring anchors. Installation is now complete.
WIRE ROPE INSTALLATION NOTE: When installing a new wire rope, unhook the tensioner springs to ease placement of the wire rope end into the rope anchor. After tightening rope anchor on drum, re-connect springs before winding rope onto drum.