

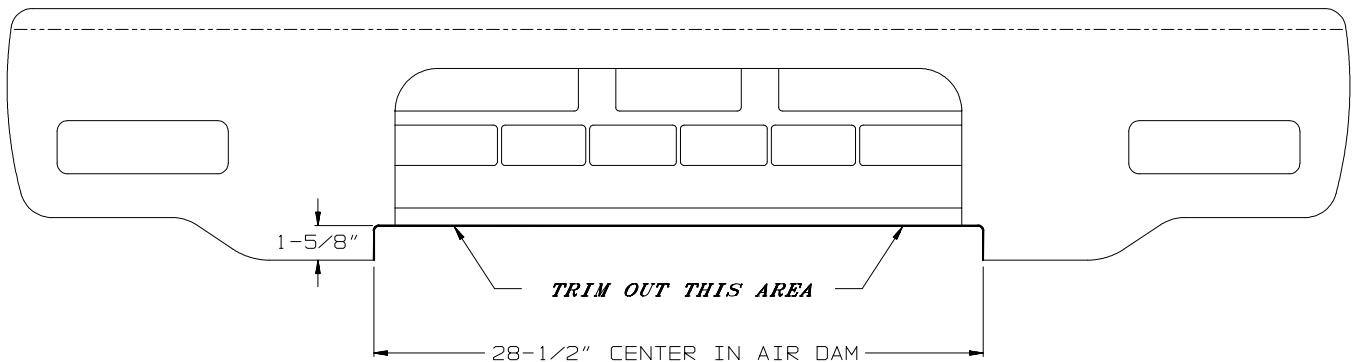


## INSTALLATION INSTRUCTIONS

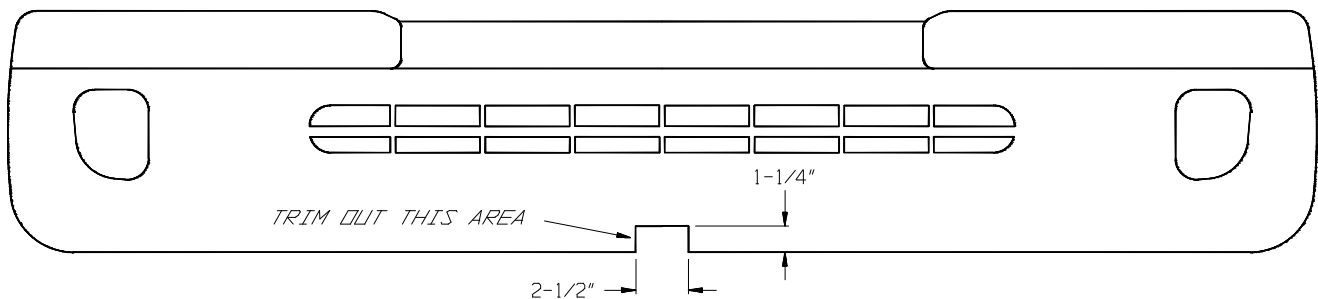
### RECEIVER KIT 33025 FOR TOYOTA TACOMA, 4 RUNNER, LAND CRUISERS: PRADO, COLORADO, & 90

1. **For Tacoma pickup only**, refer to **Figure 1** or **Figure 2** (per the type of bumper on your truck) and trim out the plastic as shown. The 4 Runner and Land Cruiser do not require trimming, but the plastic does need to be flexed up slightly for installation of the receiver. On the Land Cruiser, installation can be made easier by disconnecting the two center tabs on the bottom back of the bumper.

**FIGURE 1**



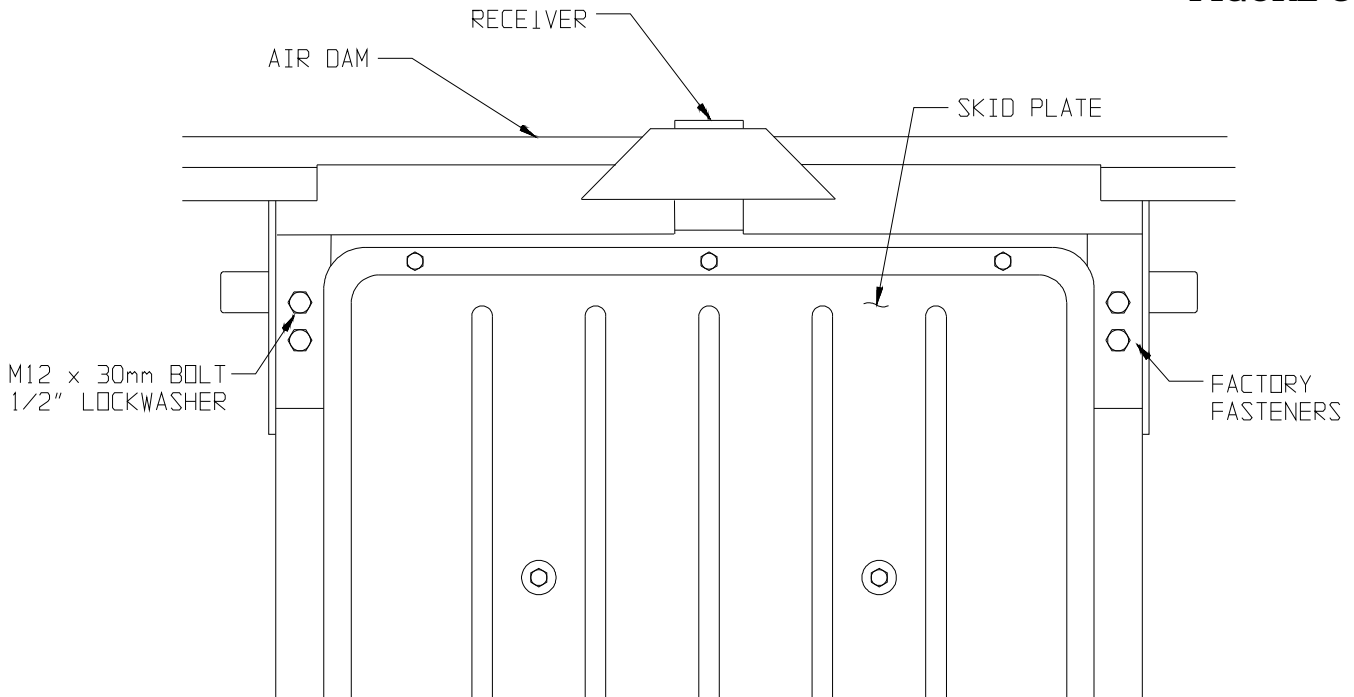
**FIGURE 2**



2. Remove the factory tow hooks, tie down loops and the skid plate assembly.

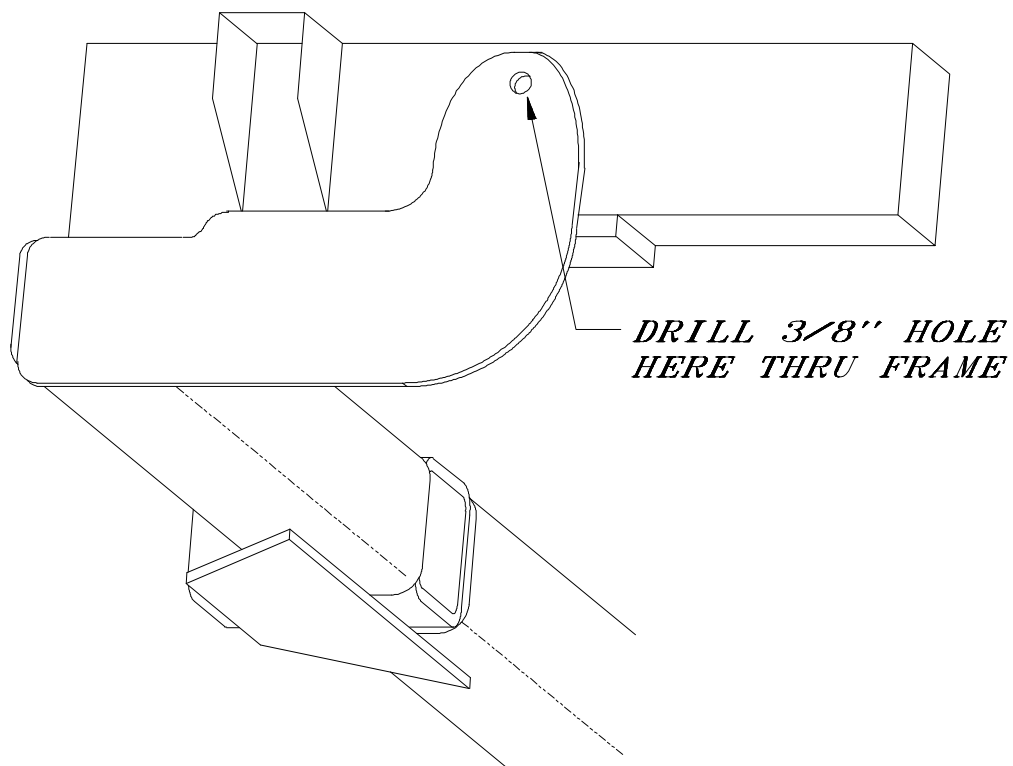
3. Install the receiver up against the bottom of the frame as shown in **Figure 3**. For the **Land Cruiser** , first install and secure bolts into the holes furthest from the front bumper, then install and secure bolts into the front holes.

**FIGURE 3**



4. Refer to **Figure 4**. Using the hole in the receiver as a guide, drill a 3/8" hole through the vehicle frame. Secure with the 3/8" x 3-1/2" bolt using a flat washer against the inside of the frame.

**FIGURE 4**



5. Reinstall skid plate.